

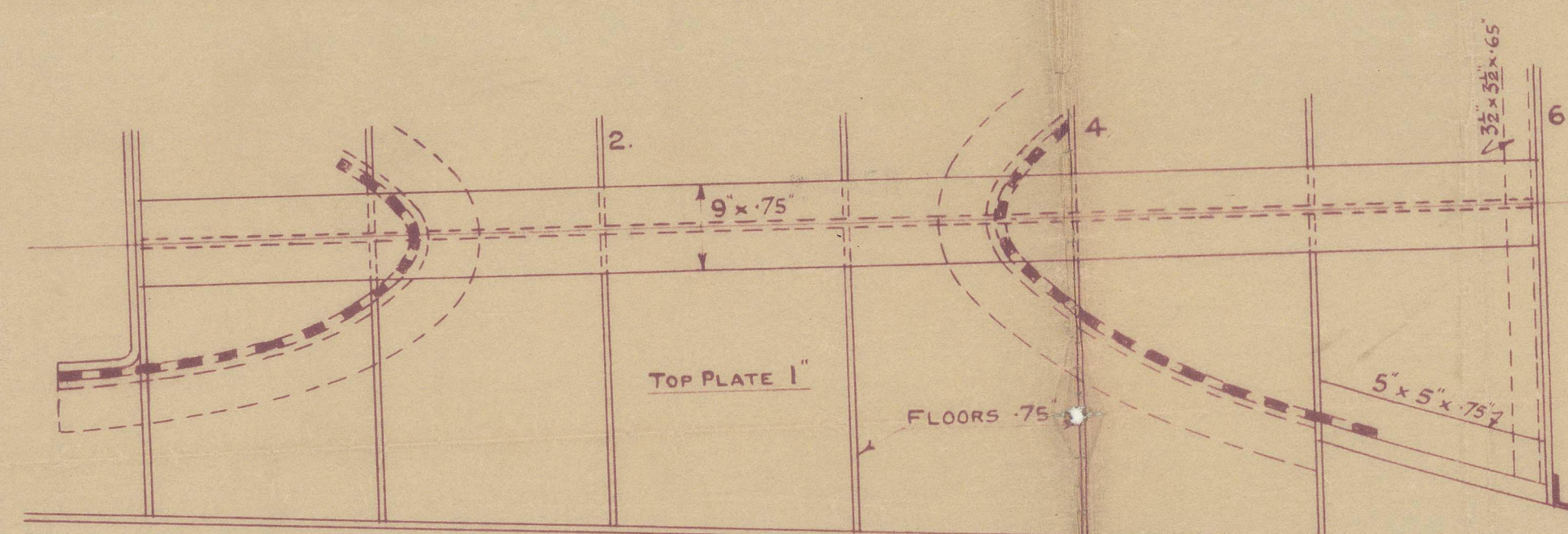
JOB NO. H.K.1000.
SHIP NOS 296 - 297.
FABRICATED STERNFRAME.

SCALE $\frac{3}{4}'' = 1$ FOOT.

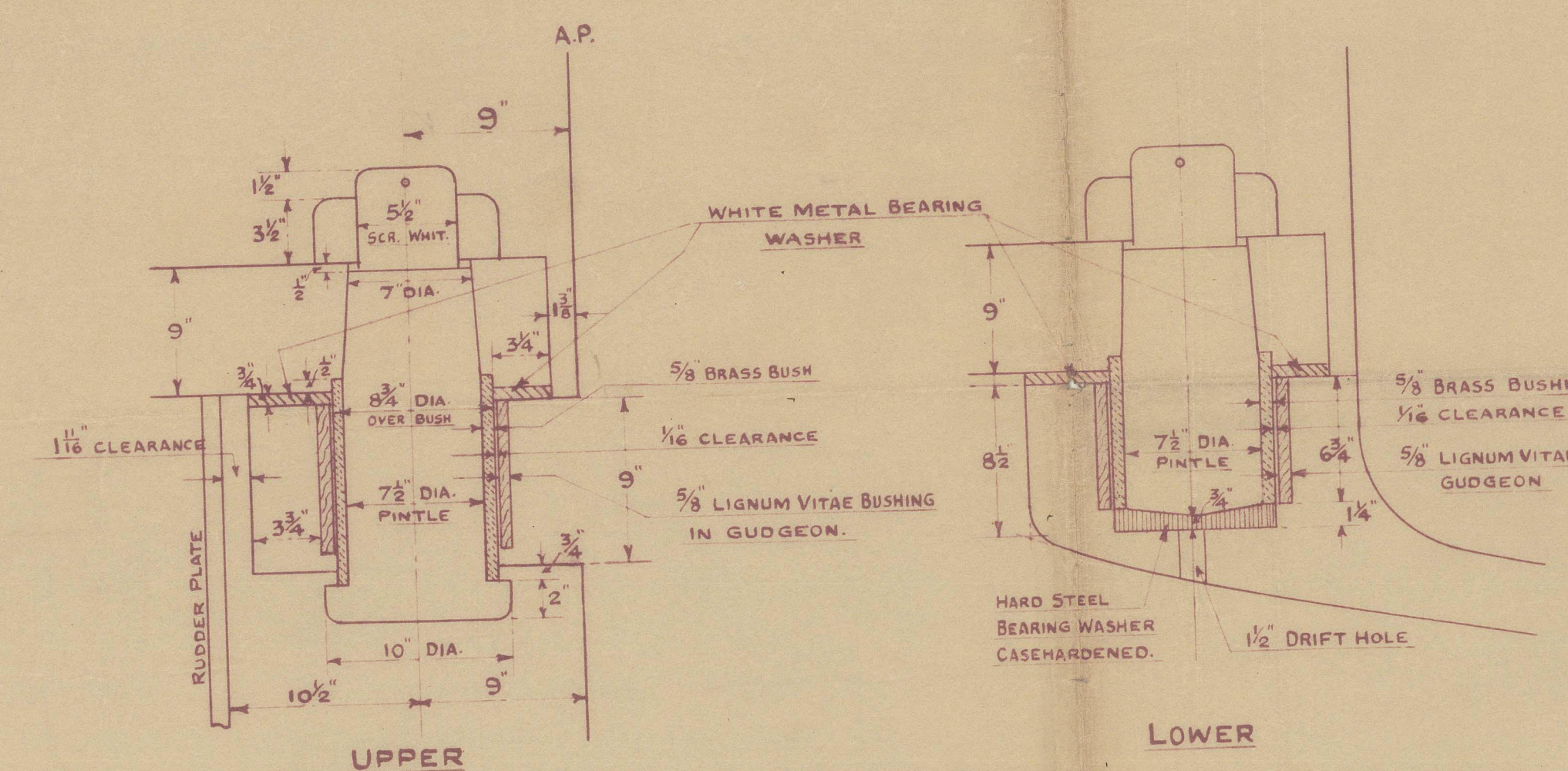
DIMS. - 425'-0" B.P. x 56'-6" x 27'-6" MLD TO U. DECK.

TO B.C. TESTS AND REQUIREMENTS.
 VESSEL FITTED WITH OERTZ RUDDER IN ACCORDANCE WITH
 PLAN ALREADY APPROVED.

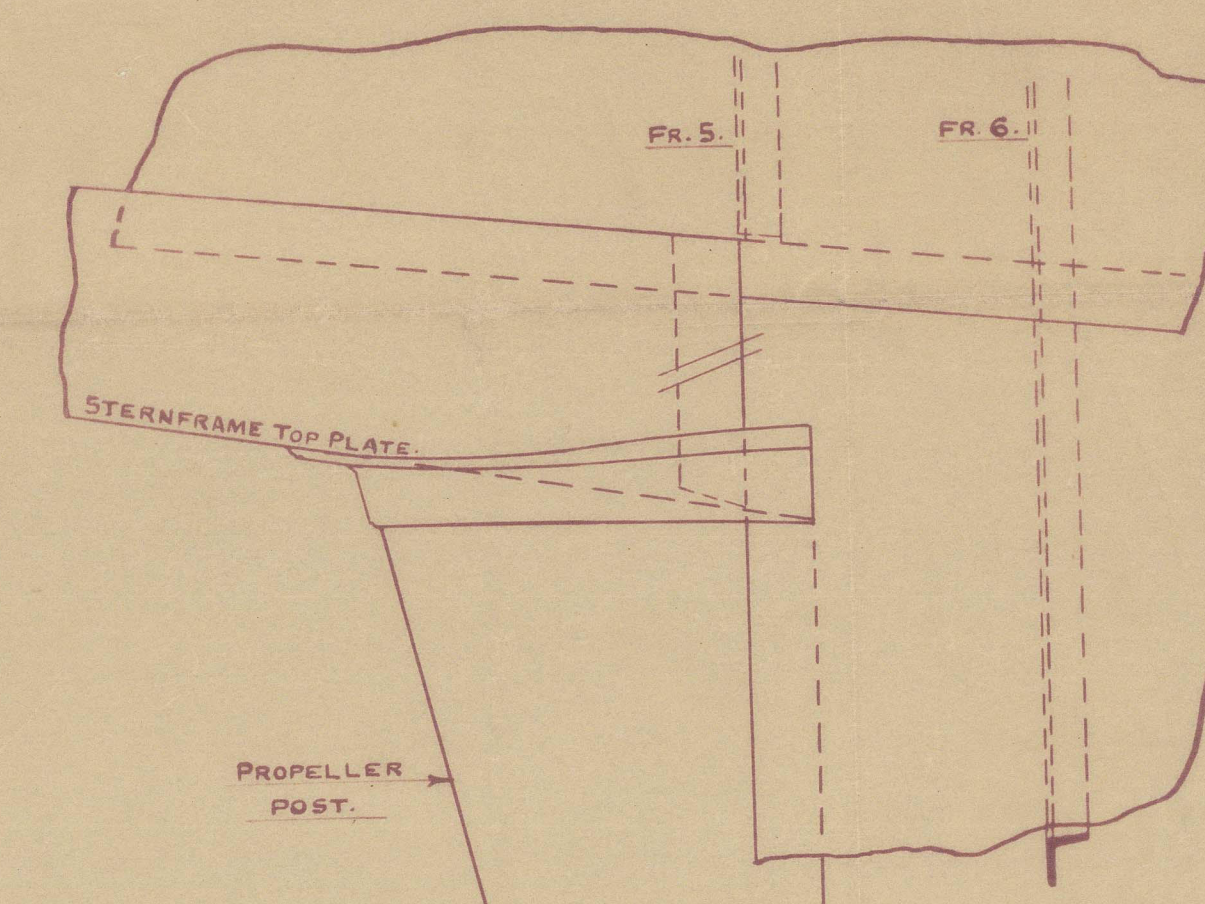
20 FEB 1940



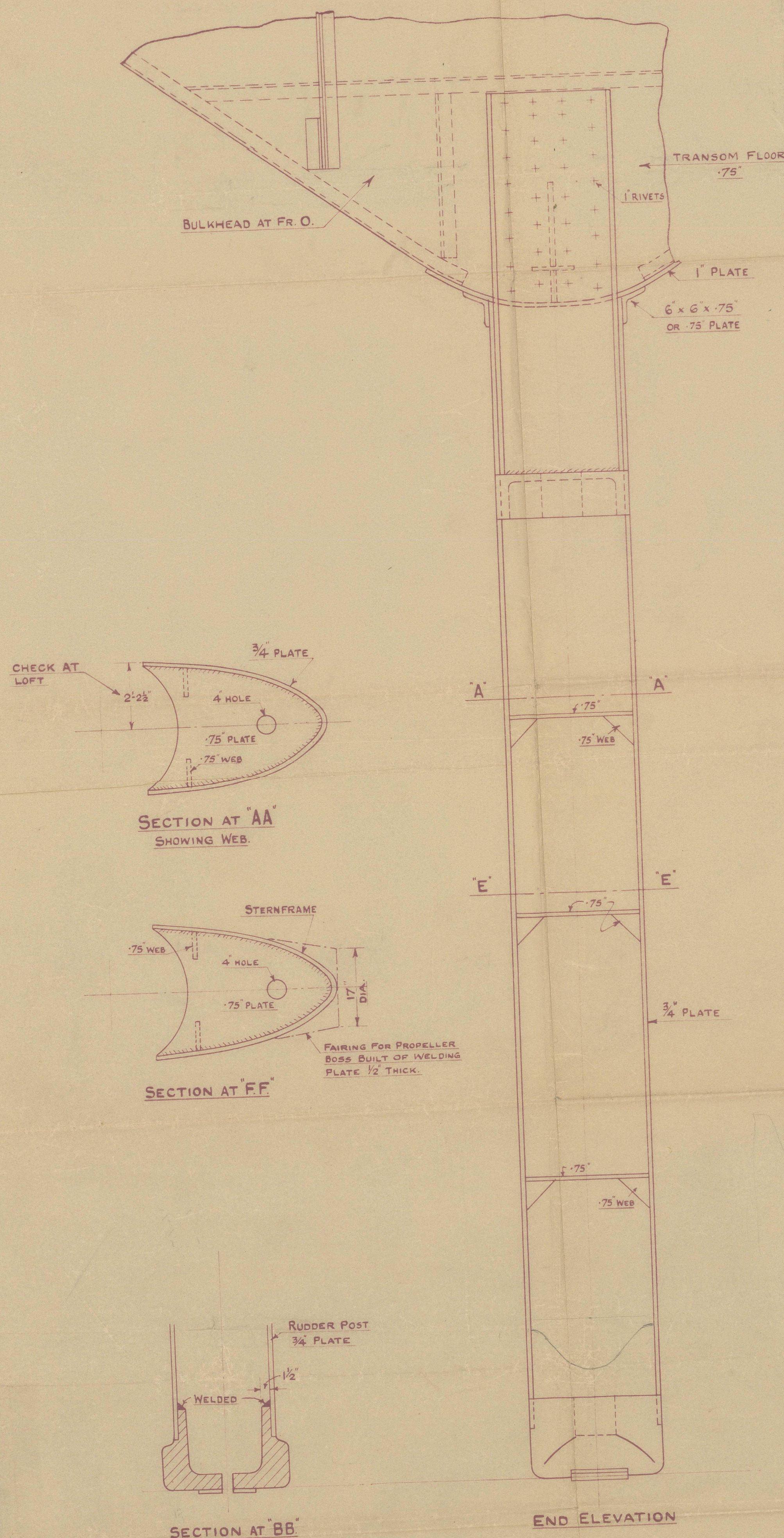
PLAN OF TOP



GUDGEON & PINTLE DETAILS
 SCALE $\frac{1}{2}'' = 1$ FOOT



DETAIL OF SHELL CONNECTION



SECTION AT FR 5

SECTION AT CC

SECTION AT DD

SECTION AT EE

ELEVATION OF PROPELLER POST
 LOOKING FORWARD

PLAN VIEW & SECTION OF BOSSING

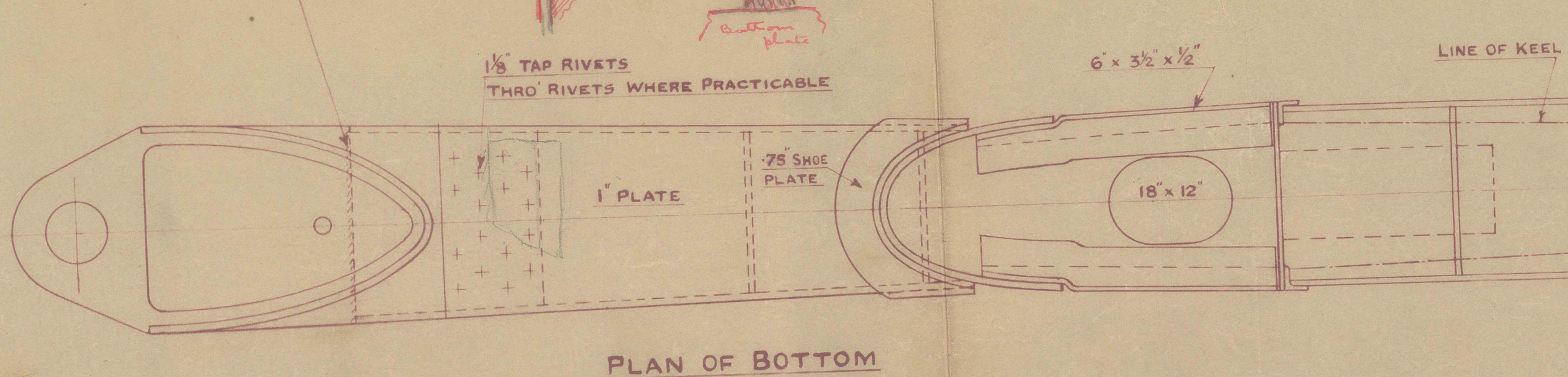
SECTION AT 2

SECTION AT 3

SECTION AT 4

SECTION AT 5

SECTION AT 6
 LOOKING FORWARD



PLAN OF BOTTOM



DRAWING NO. A. 6850

10

AMACONT

Fabricated Sternframe.

Waledon Sxg. Co.

No. H.K. 1000.

21.2.40.

"ATHAMAS" *

Hongkong Whampoa Dock Nos. 841-2-3 & 847-8.

Yokohama Dock No. 296-7.

EX BURMOUNT

841 EMPIRE MOONRISE

✓ 296 EMPIRE HAVEN

842 " STARLIGHT

✓ 297 " ALMOND.

843 " MOONBEAM.

847 " DRAGON

848 " PAGODA.

NEW MARGOLITA

Harland

Newcastle

"CLEARTON"

*BURMOUNT



© 2021

Lloyd's Register Foundation

012703-012210-0004