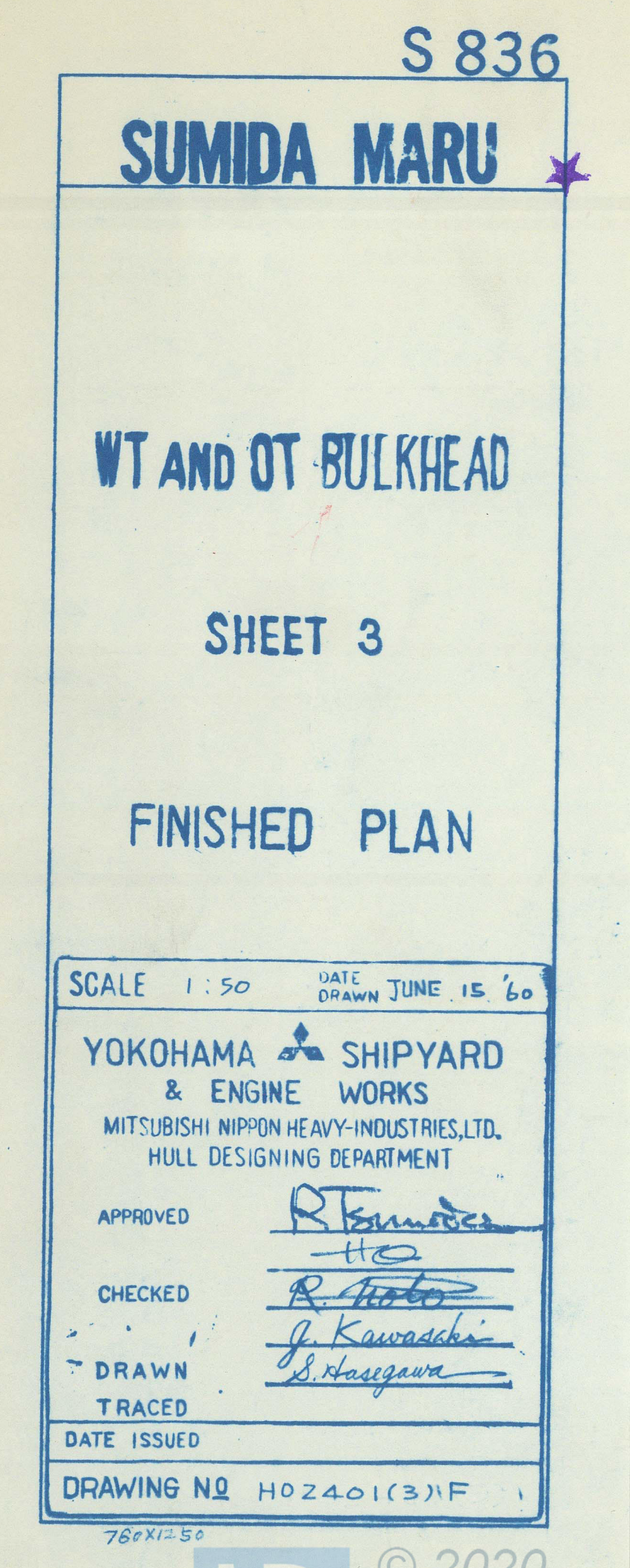


HISTORY

1 AUG 17 '59	ORIGINALLY DRAWN
2 OCT 22 '59	APPROVED BY OWNERS
3 OCT 2 '59	APPROVED BY NK
4 SEP 15 '59	APPROVED BY LRS
5 JUNE 15, '60	FINALLY DRAWN





S 836

SUMIDA MARU

WT AND OT BULKHEAD

SHEET 3

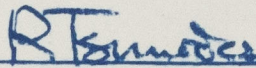
FINISHED PLAN

SCALE 1:50

DATE DRAWN JUNE 15 '60

YOKOHAMA  SHIPYARD  
& ENGINE WORKSMITSUBISHI NIPPON HEAVY-INDUSTRIES, LTD.  
HULL DESIGNING DEPARTMENT

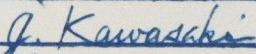
APPROVED



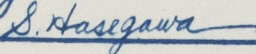
CHECKED



DRAWN



TRACED



DATE ISSUED

DRAWING NO H02401(3) F

760X1250

012193-012202-0248

LLOYD'S REGISTER  
OF SHIPPINGRECORDS DEPT.  
LONDON.

13

CERTIFIED COPY OF APPROVED PLAN

PLACE OF APPROVAL Kote DATE 15.9.59

CERTIFIED BY  DATE JUL 1960

M. T. "SUMIDA MARU"

AS BUILT.

YKA.F.E. Rpt. No. 3311

© 2020  
19146Lloyd's Register  
Foundation

012193-012202-0248