

Index No.
(For London Office only.)

Lloyd's Register of Shipping.
SURVEYS FOR FREEBOARD.
(CONDITIONS OF ASSIGNMENT.)

Ship's Name M/T "MARGIT GORTON".

Port of Survey Landskrona.

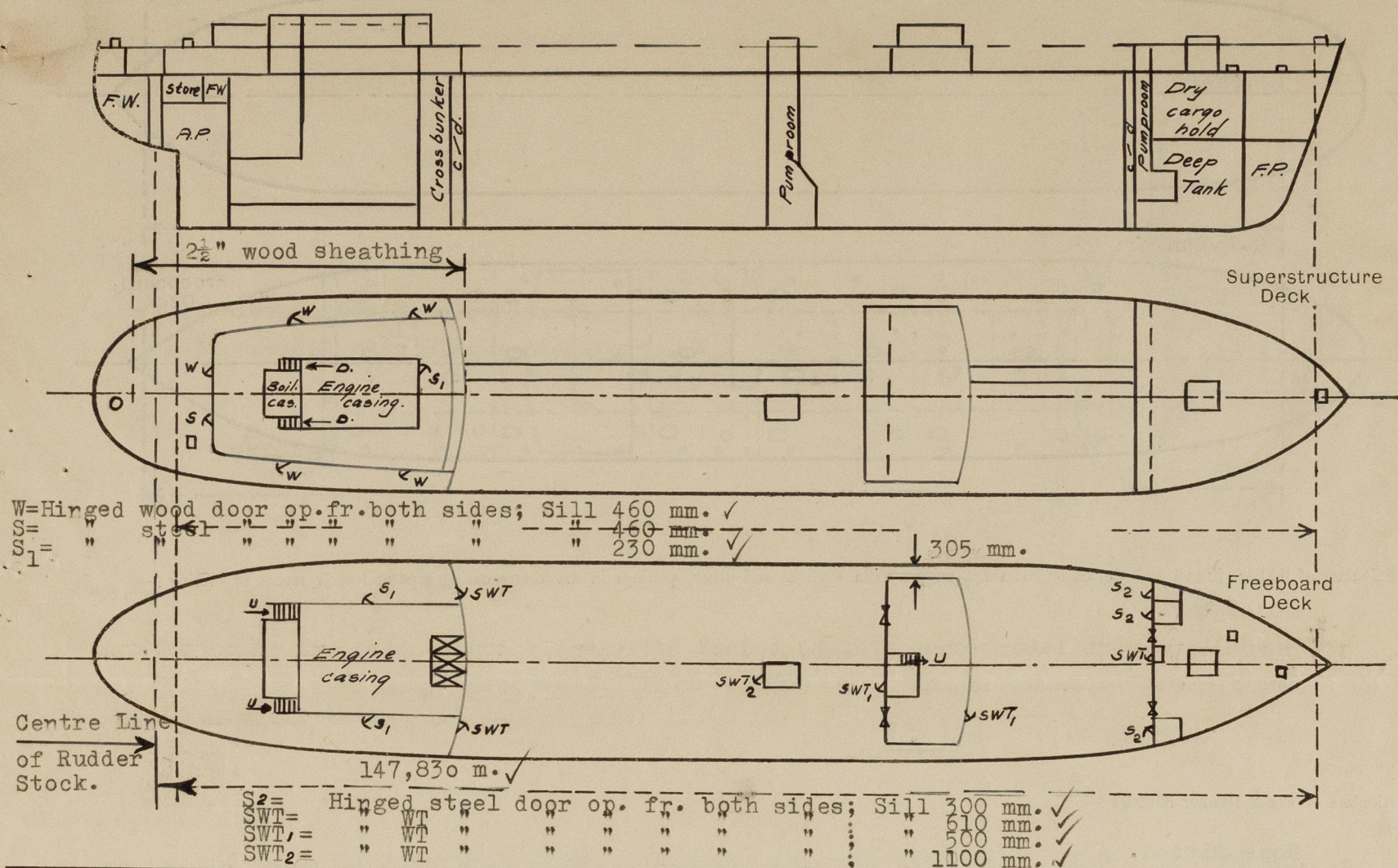
Official Number.

Surveyor's Signature.

Nationality and Port of Registry Swedish. Helsingborg.

Date of Survey..... Whilst Building.

Disposition and dimensions of superstructures, trunks, deckhouses and machinery casings to be inserted in the diagrams and tabular statement :—



Particulars of Superstructures, Trunks, Casings, Deckhouses.

	Coaming	Plating	Stiffeners	Spacing	End Attachments of Stiffeners	Size of Openings	Height of Sills	Height of Casings
Poop Bulkhead		11 mm.	250x100x13	760	Bkts. T & B	795x1440	610	2360
Raised Quarter Deck Bulkhead ...								
Bridge, After Bulkhead		11/32"	130x65x9	760	T. Bkts. B. None	920x1230 700x1600	600 500	2360
Bridge, Forward Bulkhead		7/16"	300x90x13	760	Bkts. T & B	630x1570	500	2360
Forecastle Bulkhead		11/32"	5"x3"x5/16"	660	None	920x1230 610x1420	610	2285
Pump room amidship					T. Bkts.			
Pump room entrance fwd.		5/16"	120x75x8	660	B. None	610x1800	1100	3500
Trunk Room								
Trunk Room								
Exposed Machinery Casings on Free- board or Raised Quarter Decks ...								
Exposed Machinery Casings on Super- structure Decks (inside dk-house)		1/4"	130x65x9 75x65x8	850	T. Cont. B. To beam	630x1745	230	-
Machinery Casings within Superstruc- tures not fitted with Class I Closing Appliances		1/4"	130x65x9 75x65x8	850	To beam T & B.	630x1745	230	-
Deckhouses on Flush Deck Ships ...								

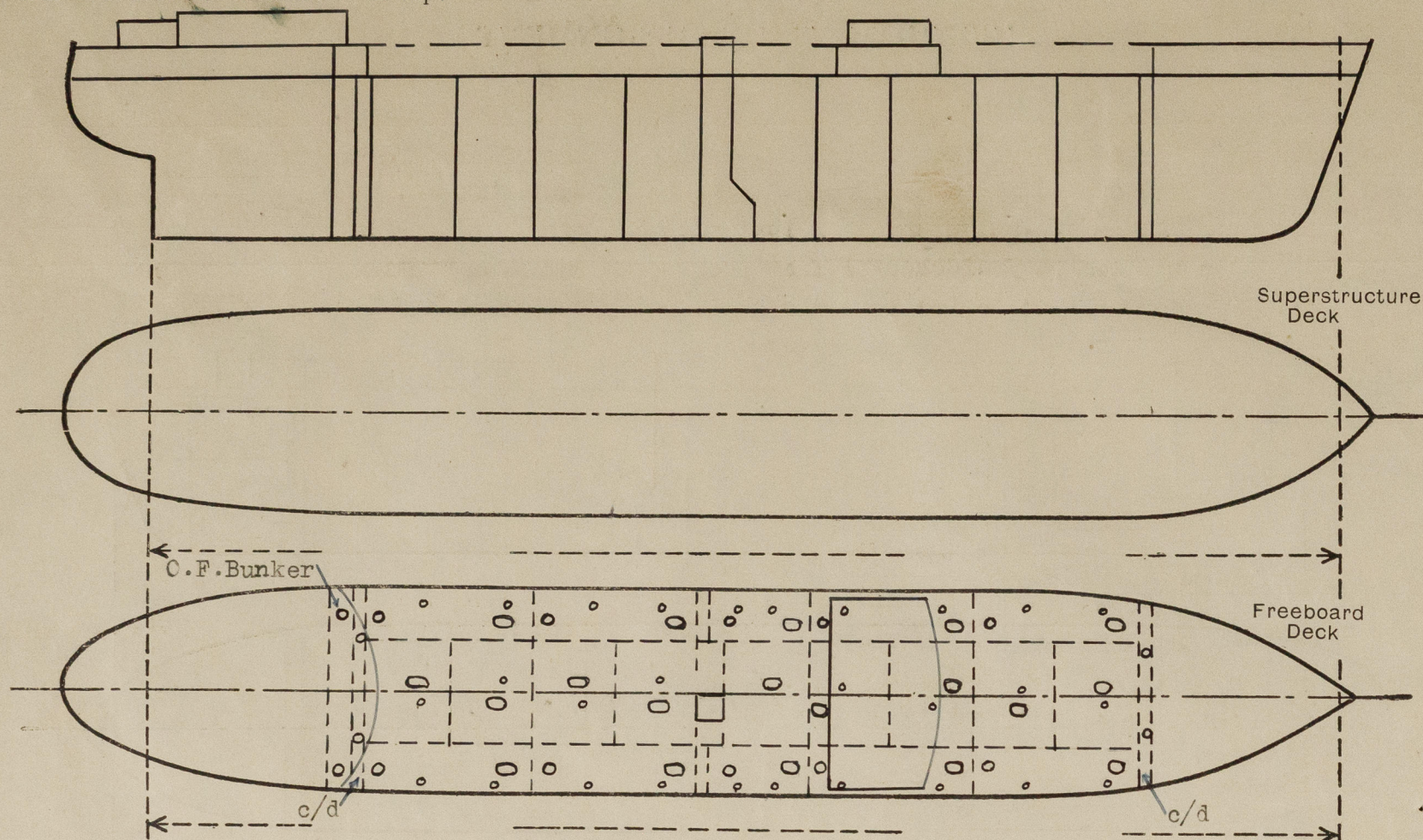
Particulars of Closing Appliances (state if capable of being manipulated from both sides).

Poop Bulkhead	Hinged steel W.T.doors operable from both sides. ✓
Raised Quarter Deck Bulkhead ...	
Bridge, After Bulkhead	Portable steel plates secured by hook bolts and hinged steel W.T.door ✓ operable from both sides.
Bridge, Forward Bulkhead	Hinged steel W.T.door operable from both sides. ✓
Forecastle Bulkhead... ..	Portable steel plates secured by hook bolts and hinged steel W.T.door operable from both sides.
Exposed Machinery Casings on Free- board or Raised Quarter Decks ...	
Exposed Machinery Casings on Super- structure Decks	
Machinery Casings within Superstruc- tures not fitted with Class I Closing Appliances	
Pumproom amidship Deckhouse on Deck Deck	Hinged steel W.T.door operable from both sides. ✓

Margit Gorthon

PARTICULARS OF PROTECTION TO OPENINGS, ETC.

The following diagrams should be used to indicate the positions of cargo and coaling hatchways, gangway, cargo and coaling ports, ventilators, companionways, etc., which would affect the seaworthiness of the ship:—



Particulars of fiddle, funnel and ventilator coamings, engine room skylight and other openings in machinery casing tops and their means of closing:—

Motorship. ✓

Funnel and ventilators on top of boat deck efficiently constructed and supported. ✓

Engine room skylight of steel and substantially constructed. ✓

Particulars of Flush Bunker Scuttles:—

None fitted. ✓

Particulars of Companionways:—

None fitted. ✓

Particulars of Ventilators in exposed positions on freeboard and superstructure decks:—

All ventilators efficiently constructed and supported and provided with means of closing. ✓

Ventilators above 915 mm. in height efficiently stayed. ✓

Height of coamings on forecastle deck = 915 mm. ✓

" " " " bridge " = 770 mm. ✓

" " " " poop " = 850/1200 mm. ✓

" " " " freeboard " (to pumproom amidship) = 6800 mm. ✓

Particulars of Air Pipes in exposed positions on freeboard, raised quarter, or superstructure decks:—

All air pipes of steel and provided with means of closing. ✓

Air pipes to fuel oil tanks also provided with wire gauze. ✓

Height of air pipes on forecastle and poop decks = 460 mm. ✓

" " " " freeboard deck = 915 mm. ✓

Margit Gorthon

Particulars of Gangway ~~XXXXXXXXXX~~

Gangway between poop and bridge and bridge and forecastle supported 3400 mm. apart and fore and aft supported at expansion joints. ✓

Stanchions spaced 1700 mm. apart. ✓

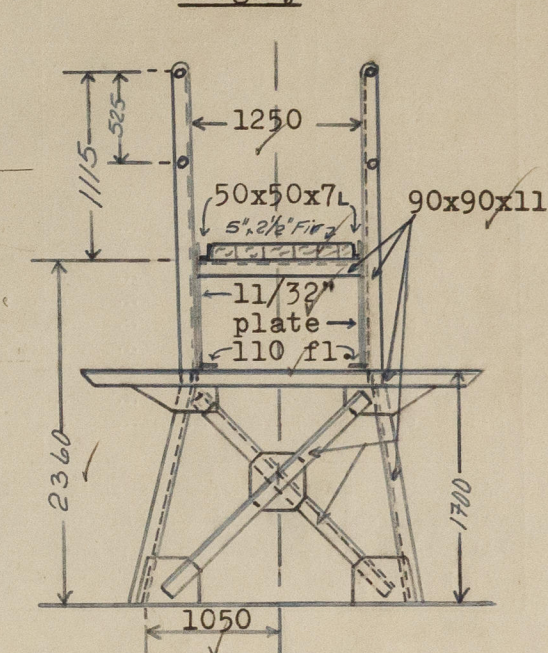
See sketch below.

Particulars of Scuppers and Sanitary Discharge Pipes:—

Scuppers and sanitary discharges from midship deckhouse are led to a common pipe which is led overboard in cofferdam in pumproom about 4000 mm. above base line and provided with a N.R. valve and a sluice valve operated from pumproom. ✓

Scuppers and sanitary discharges from poop space and from deckhouse on poop deck are led overboard in engine room above LWL and provided with N.R. valves. ✓

Gangway:



Particulars of Side Scuttles:—

All side scuttles of substantial construction and provided with hinged deadlights. ✓

Vertical distance of Sill of lowest Side Scuttle above top of keel. Abt. 13000 mm.

Particulars of Guard Rails:—

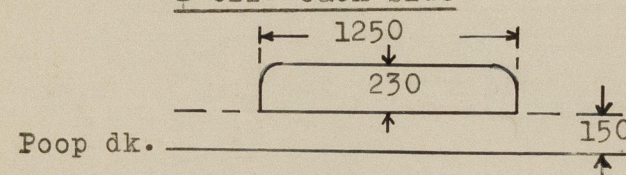
Guard rails on forecastle deck, freeboard deck and aft end of poop deck 1050 mm. in height and 3 rods. ✓

Stanchions spaced about 1400 mm. apart and supported every 2nd stanchion. ✓

Bulwark on bridge deck and on poop deck from frame No.7 and forward efficiently constructed and supported. ✓

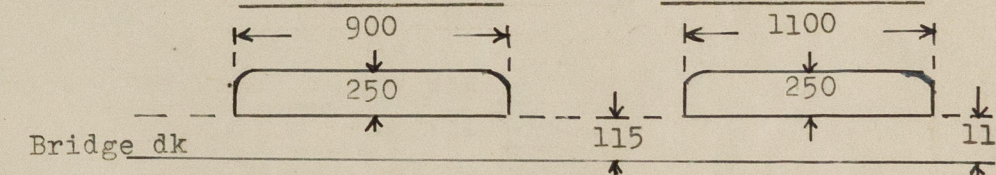
Particulars of Freeing Arrangements in poop deck bulwark:

2 off. each side.



Particulars of Freeing Arrangements in bridge deck bulwark:

1 off each side.



Particulars of Freeing Arrangements.

	Length of Bulwark	Height of Bulwark	Size of Freeing Ports	Number each side	Area each side	Rule area each side
After Well ...						
Forward Well ...						

State position of each freeing port ... { After Well:—
(F. and A. position and height above deck edge) { Forward Well:—

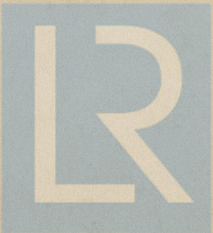
State whether the freeing ports are fitted with shutters, bars, or rails, and give particulars of such:—

Additional area where sheer is less than standard.

PARTICULARS OF PROTECTION TO OPENINGS, ETC.

HATCHWAYS ON FREEBOARD AND SUPERSTRUCTURE DECKS.											
Freeboard deck											
Description of Hatchway	Cargo tanks	Cargo t. vent.	Cofferd. op./manhole/	Butterworth openings cargo tanks	Fore p. store	Escape dry cargo hold	Dry cargo hold	To f'cle	Poop deck Store
Dimensions of Hatchway	1450x730	700 φ	510x380	315 φ	980x730	750x590	3900x3415	700x700	700 φ/900
COAMINGS	Height above Deck	...	800 ✓	150	100	75 ✓	230 ✓	230 ✓	800 ✓	610 ✓	610 ✓
	Thickness { Sides	...	10 ✓	12	13,5 ✓	12 ✓	10 ✓	10 ✓	7/16" ✓	10 ✓	10 ✓
	Stiffeners	-	-	-	-	-	150x75x10	-	-
	Brackets, Stays	-	-	-	-	-	I.F.I.A. ✓ pps	-	-
HATCH BEAMS	Number
	Spacing
FORE AND AFTERS	Scantling and Sketch
	Bearing Surface
	Number
	Spacing
HATCH COVERS	Unsupported Lengths
	Scantling* and Sketch
	Bearing Surface
	Material	Steel	Steel	Steel	Steel	Steel	Steel	Steel	Steel	Steel
HATCH COVERS	Thickness	12,5	12,5	14,5	12	8	8	10	8	8
	How fitted	Hinged	Hinged	Bolted	Hinged	Hinged	Hinged	Bolted	Hinged	Hinged
	Bearing Surface	oil t.	oil t.	oil t.	oil t.	W.T.	W.T.	W.T.	W.T.	W.T.
	Spacing of Cleats	...	10 Toggles	8 Toggles	18 Bolts	1 Toggle	5 Toggles	5 Toggles	5 Toggles	3 Toggles	3 Toggles
Number of Tarpaulins...											
*Are wood fore and afters steel shod at all bearing surfaces ?											
Are battens and wedges efficient and in good condition ?											
Are tarpaulins in good condition and in accordance with rule requirements ?											
Are lashings provided in accordance with rule requirements ?											

Particulars of any special features :—



© 2020

Lloyd's Register Foundation