

## LLOYD'S REGISTER OF SHIPPING

Index No. ....  
(For London Office only.)

## SURVEYS FOR FREEBOARD

(CONDITIONS OF ASSIGNMENT)

Ship's Name "MARGIT GORTHON"

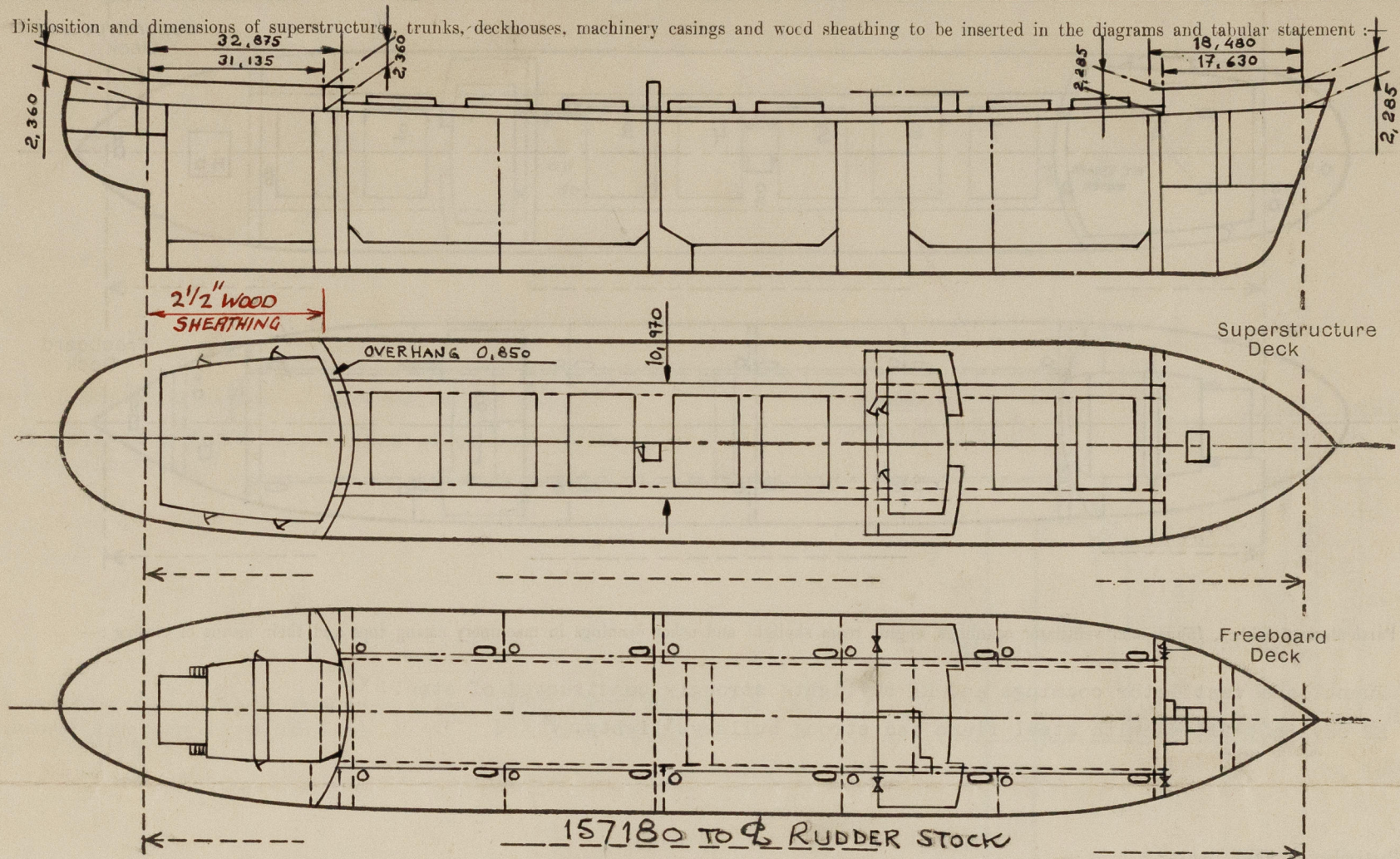
Port of Survey Landskröna

Official Number 9 2 9 4

Surveyor's Signature *D. MacLachlan*

Nationality and Port of Registry Swedish, Helsingborg

Date of Survey February, 1961.



Particulars of Superstructures, Trunks, Casings, Deckhouses.

|  | Coaming               | Plating<br>mm. | Stiffeners<br>mm.                        | Spacing<br>mm. | End Attachments<br>of Stiffeners | Size of Openings          | Height of<br>Sills<br>mm.     | Height, Beam<br>to Beam<br>mm. |
|--|-----------------------|----------------|--|----------------|----------------------------------|---------------------------|-------------------------------|--------------------------------|
| Poop Bulkhead ... ..   |                       | 11 ✓           | 250x100x13 IA ✓                          | 760 ✓          | Bkts T & B ✓                     | 375x480                   | 380 above<br>trunk top        | 2360                           |
| Raised Quarter Deck Bulkhead ...   |                       | 8.7 ✓          | 130x65x9 IA ✓                            | 760 ✓          | Bkts at top<br>None at btm ✓     | 1230x920 TO<br>500x605    | Nil<br>380 above<br>trunk top | 2360                           |
| Bridge, After Bulkhead ... ..  |                       | 11 ✓           | 300x90x13 IA ✓                           | 760 ✓          | Bkts T&B ✓                       |                           |                               | 2360                           |
| Bridge, Forward Bulkhead ... ..  |                       | 8.7 ✓          | 130x75x8 IA ✓                            | 660 ✓          | None ✓                           | 1230x920 TO<br>1420x610 ✓ | Nil<br>300 ✓                  |                                |
| Forecastle Bulkhead ... ..   |                       | 33             | 200x90x12 IA<br>Longs. & 11 mm.<br>webs. | 750<br>340     | Welded T&B                       | None                      | None                          | 1500                           |
| Trunk, Aft ... ..  |                       | 33             |  |                |                                  |                           |                               |                                |
| Trunk, Forward ... ..  |                       | 11 ✓           | 250x100x13 IA ✓                          | 760 ✓          | Bkts T&B ✓                       | None ✓                    | -                             | 2360                           |
| Exposed Machinery Casings on Free-<br>board or Raised Quarter Decks ...                          | Poop bkd<br>at centre | 6.3 ✓          | 130x65x9 IA ✓                            | 850 ✓          | Cont. at top<br>B to Beam ✓      | 1745x630 ✓                | 230 ✓                         | -                              |
| Exposed Machinery Casings on Super-<br>structure Decks in dkhse ...                              |                       | 6.3 ✓          | 130x65x9 IA ✓                            | 850 ✓          | To beam top<br>and btm. ✓        | 1745x630                  | 230 ✓                         | -                              |
| Machinery Casings within Superstruc-<br>tures not fitted with Class Closing<br>Appliances ... .. |                       | 8 ✓            | 120x75x8 IA ✓                            | 660            | Bkts at top<br>None at btm       | 1650x610 ✓                | 380 above<br>trunk top        | 2000 above<br>trunk top        |
| Deckhouse and Pump Room Entrances  |                       |                |  |                |                                  |                           |                               |                                |

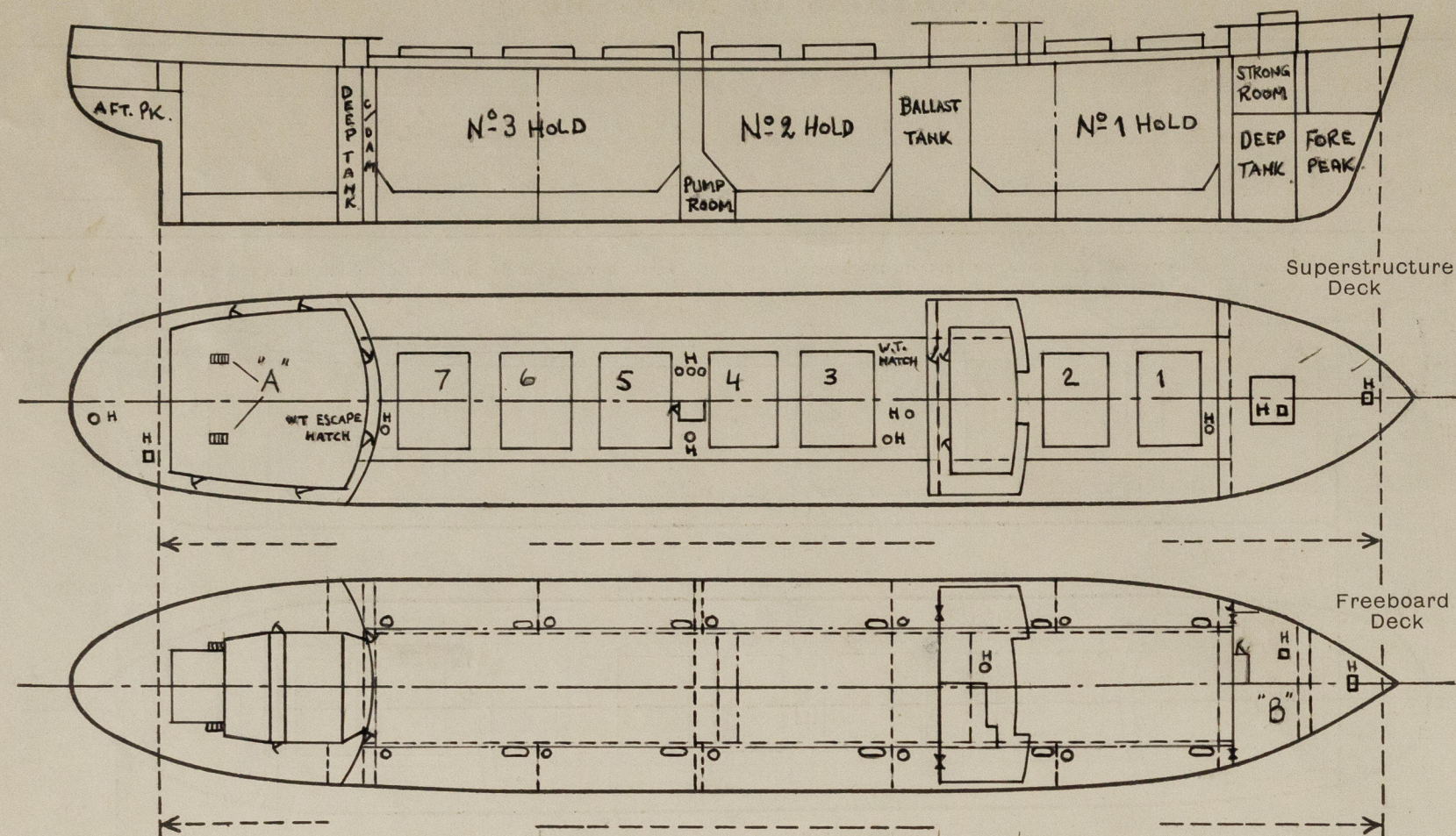
Particulars of Closing Appliances (state if capable of being manipulated from both sides).

|  |  |
|--|--|
| Poop Bulkhead ... ..   | Hinged W.T. steel <del>hatch</del> <b>DOORS</b> OBS ✓  |
| Raised Quarter Deck Bulkhead ...   | -  |
| Bridge, After Bulkhead ... ..  | Portable steel plates secured by hook bolts. ✓         |
| Bridge, Forward Bulkhead ... ..  | Hinged W.T. steel <del>hatch</del> <b>DOORS</b> OBS. ✓ |
| Forecastle Bulkhead ... ..   | -  |
| Exposed Machinery Casings on Free-<br>board or Raised Quarter Decks ...                          | Portable steel plates secured by hook bolts. ✓         |
| Exposed Machinery Casings on Super-<br>structure Decks in dkhse ...                              | Hinged steel door OBS. ✓                               |
| Machinery Casings within Superstruc-<br>tures not fitted with Class Closing<br>Appliances ... .. | Intact ✓   |
| Deckhouse and Pump Room Entrances  | Hinged steel doors OBS ✓                               |
|  | Hinged steel doors OBS ✓                               |
|  | Hinged W.T. steel door OBS ✓                           |



# PARTICULARS OF PROTECTION TO OPENINGS, ETC.

The following diagrams should be used to indicate the positions of cargo and coaling hatchways, gangway, cargo and coaling ports, side scuttles, scuppers, ventilators, companionways, etc., which would affect the seaworthiness of the ship :-



Particulars of fiddle, funnel and ventilator coamings, engine room skylight and other openings in machinery casing tops and their means of closing :-

Funnel and ventilator coamings and ER skylights strongly constructed of steel.  
ER skylight fitted with steel flaps and strong bullseye lights.

Particulars of Flush Bunker Scuttles :-

None

Particulars of Companionways :-  
(including those incorporated in deckhouses and masts)

"A" Stairways in aft accommodation on poop deck enclosed in strong steel deckhouse, fitted with hinged steel and hardwood doors, sills 460 mm.

"B" Entrance to fwd pump room in f'cle. Closed by hinged steel door OBS, 610 mm sill.

Particulars of Ventilators in exposed positions on freeboard and superstructure decks :-

Hold ventilators fitted on top of steel hatch covers. (2 vents per hatch) 275 dia. coaming, 8 mm thick by 100 mm high, fitted with 12 mm WT steel cover secured by 1" dia. centre bolt.

Freeboard deck: Derrick post vents 6800 mm high efficiently stayed.

F'cle deck: Ventilator coaming 915 mm. high.

Poop deck: Ventilator coaming 850/1200 mm high, efficiently stayed.

Bridge, dk: Ventilator coaming 770 mm high

Closed by steel hoods and canvas covers.

Particulars of Air Pipes in exposed positions on freeboard, raised quarter, or superstructure decks :-

Airpipes to wing ballast tanks of steel, fitted to top cover of access hatches, minimum height 1000 mm. above dk fitted with wire gauze and canvas covers.

Remaining airpipes of steel fitted with approved mushroom type steel hoods and canvas covers.

Minimum height on trunk dk: 725 mm.  
" " on f'cle dk & poop dk: 450 mm.  
" " on fbd dk: 915 mm.

Particulars of Gangway Cargo and Coaling Ports :-

None

Particulars of Scuppers and Sanitary Discharge Pipes :-

Scuppers and discharges from midship accommodation combined and led overboard with N.R. valve.  
Scuppers and discharges from aft accommodation led overboard in machinery space with N.R. valves.  
Steering gear compartment chain locker etc. drained by hand pumps. Trunk drained by screwed brass plugs with chain attachment.

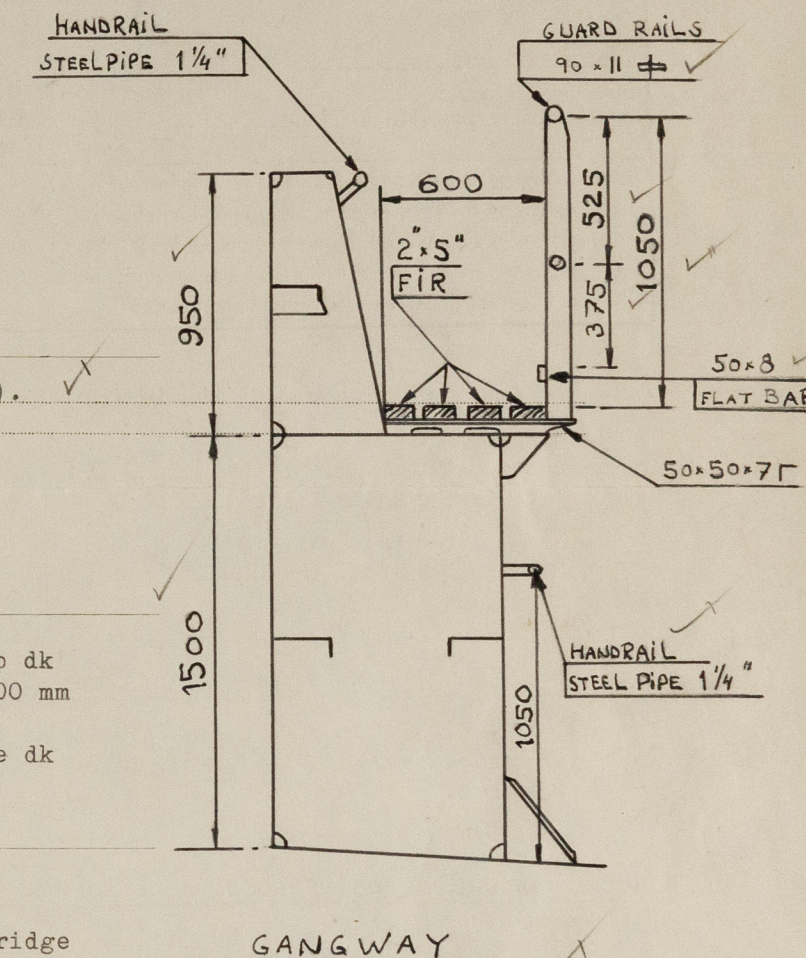
Particulars of Side Scuttles and Deadlights :- None below fbd deck.  
All sidelights substantially constructed of brass with hinged deadlights.

Vertical distance of Sill of lowest Side Scuttle above top of keel 12803 (None below fbd dk).  
Distance from midship to centre of lowest Side Scuttle 30350 mm.

Particulars of Guard Rails and Bulwarks :- Freeboard dk, F'cle dk and aft end poop dk 1050 mm high, 3 rails, efficiently supported by stanchions spaced 1400 mm apart and every 2nd stanchion supported.  
Bulwarks on bridge dk and poop dk and short bulwark at fore end f'cle dk efficiently constructed and supported.

Particulars of Gangways, Lifelines, etc. :-

Fore and aft gangway (p&s) on trunk top (See Sketch) from poop to Bridge to f'cle.  
Handrail on trunk side (p&s) from poop to bridge to f'cle.



| Particulars of Freeing Arrangements.  |                   |                   |                       |                  |                |                     |
|---|-------------------|-------------------|-----------------------|------------------|----------------|---------------------|
|   | Length of Bulwark | Height of Bulwark | Size of Freeing Ports | Number each side | Area each side | Rule area each side |
| After Well ... ..   | Open rails,       |                   |                       |                  |                |                     |
| Forward Well ... ..   |                   |                   |                       |                  |                |                     |
| State position of each freeing port ... .. { After Well :—<br>(F. and A. position and height above deck edge) { Forward Well :—   |                   |                   |                       |                  |                |                     |
| State whether the freeing ports are fitted with shutters, bars, or rails, and give particulars of such :—   |                   |                   |                       |                  |                |                     |
| Additional area where sheer is less than standard.  |                   |                   |                       |                  |                |                     |
| <div><div><p><u>FREEING PORTS IN POOP DECK</u></p><p><u>2 OFF EACH SIDE.</u></p></div><div><p><u>FREEING PORTS IN BRIDGE DECK</u></p><p><u>1 OFF EACH SIDE.      1 OFF EACH SIDE.</u></p></div></div> |                   |                   |                       |                  |                |                     |

Margit Gordon



# PARTICULARS OF PROTECTION TO OPENINGS, ETC.

| HATCHWAYS ON FREEBOARD AND SUPERSTRUCTURE DECKS. |                       |       |                       |                      |               |          |            |             |             |         |                  |
|--|-----------------------|-------|-----------------------|----------------------|---------------|----------|------------|-------------|-------------|---------|------------------|
|  |                       |       | Trunk top             | Freeboard deck       |               |          | F'cle deck | Poop deck   |             |         |                  |
| Description of Hatchway                          |                       |       | Nos.1, 3 and 4        | Nos.2, 5 and 6 and 7 | Side tanks    | FP store | Access     | Strong room | Store hatch | Store   | Prov. store      |
| Dimensions of Hatchway                           |                       |       | 7700 x 9300           | 10000 x 9300         | 1450x730 Oval | 700 Dia. | 980x730    | 750x590     | 3900x3415   | 700x700 | 700 dia. 900x900 |
| COAMINGS   | Height above Deck     | ...   | 950 mm                | above trunk top      | 800           | 150      | 230        | 230         | 800         | 610     | 610              |
|  | Thickness             | Sides | 13                    | 13                   | 10            | 12       | 10         | 10          | 12          | 10      | 10               |
|  | Stiffeners            | Ends  | 13                    | 13                   | 10            | -        | 10         | 10          | 12          | 10      | 10               |
|  | Brackets, Stays       | Sides | 180x90x10             | 101A                 | 2230x90x12    | -        | -          | -           | 150x75x10   | 10      | -                |
|  |                       |       | 2s                    | 2e                   | -             | -        | -          | -           | 1 (p&s)     | -       | -                |
| HATCH BEAMS                                      | Number                | ...   | 400 x 11 FLANGED 90   |                      |               |          |            |             |             |         |                  |
|  | Spacing               | ...   |                       |                      |               |          |            |             |             |         |                  |
|  | Scantling and Sketch  | ...   |                       |                      |               |          |            |             |             |         |                  |
|  | Bearing Surface       | ...   |                       |                      |               |          |            |             |             |         |                  |
| FORE AND AFTERS                                  | Number                | ...   |                       |                      |               |          |            |             |             |         |                  |
|  | Spacing               | ...   |                       |                      |               |          |            |             |             |         |                  |
|  | Unsupported Lengths   | ...   |                       |                      |               |          |            |             |             |         |                  |
|  | Scantling* and Sketch | ...   |                       |                      |               |          |            |             |             |         |                  |
| HATCH COVERS                                     | Number                | ...   |                       |                      |               |          |            |             |             |         |                  |
|  | Spacing               | ...   |                       |                      |               |          |            |             |             |         |                  |
|  | How fitted            | ...   |                       |                      |               |          |            |             |             |         |                  |
|  | Bearing Surface       | ...   |                       |                      |               |          |            |             |             |         |                  |
| Spacing of Cleats                                |                       |       | Cleats & cross        |                      |               |          |            |             |             |         |                  |
| Number of Tarpaulins                             |                       |       | wedges spaced         |                      |               |          |            |             |             |         |                  |
|  |                       |       | max. 760 mm.          |                      |               |          |            |             |             |         |                  |
|  |                       |       | Secured by 10 toggles |                      |               |          |            |             |             |         |                  |
|  |                       |       | Secured by 8 toggles  |                      |               |          |            |             |             |         |                  |
|  |                       |       | Secured by 5 toggles  |                      |               |          |            |             |             |         |                  |
|  |                       |       | Secured by 5 toggles  |                      |               |          |            |             |             |         |                  |
|  |                       |       | 615 max.              |                      |               |          |            |             |             |         |                  |
|  |                       |       | Secured by 5 toggles  |                      |               |          |            |             |             |         |                  |
|  |                       |       | Secured by 5 toggles  |                      |               |          |            |             |             |         |                  |
|  |                       |       | Secured by 5 toggles  |                      |               |          |            |             |             |         |                  |

\*Are wood fore and afters steel shod at all bearing surfaces ?

Are battens and wedges efficient and in good condition ?

Are tarpaulins in good condition and in accordance with rule requirements ?

Are lashings provided in accordance with rule requirements ?

Are wood covers fitted with galvanised end bands ?