

Lloyd's Register of Shipping.
SURVEYS FOR FREEBOARD.
(CONDITIONS OF ASSIGNMENT.)

Ship's Name "EMPIRE HUMPHREY"

Port of Survey HULL.

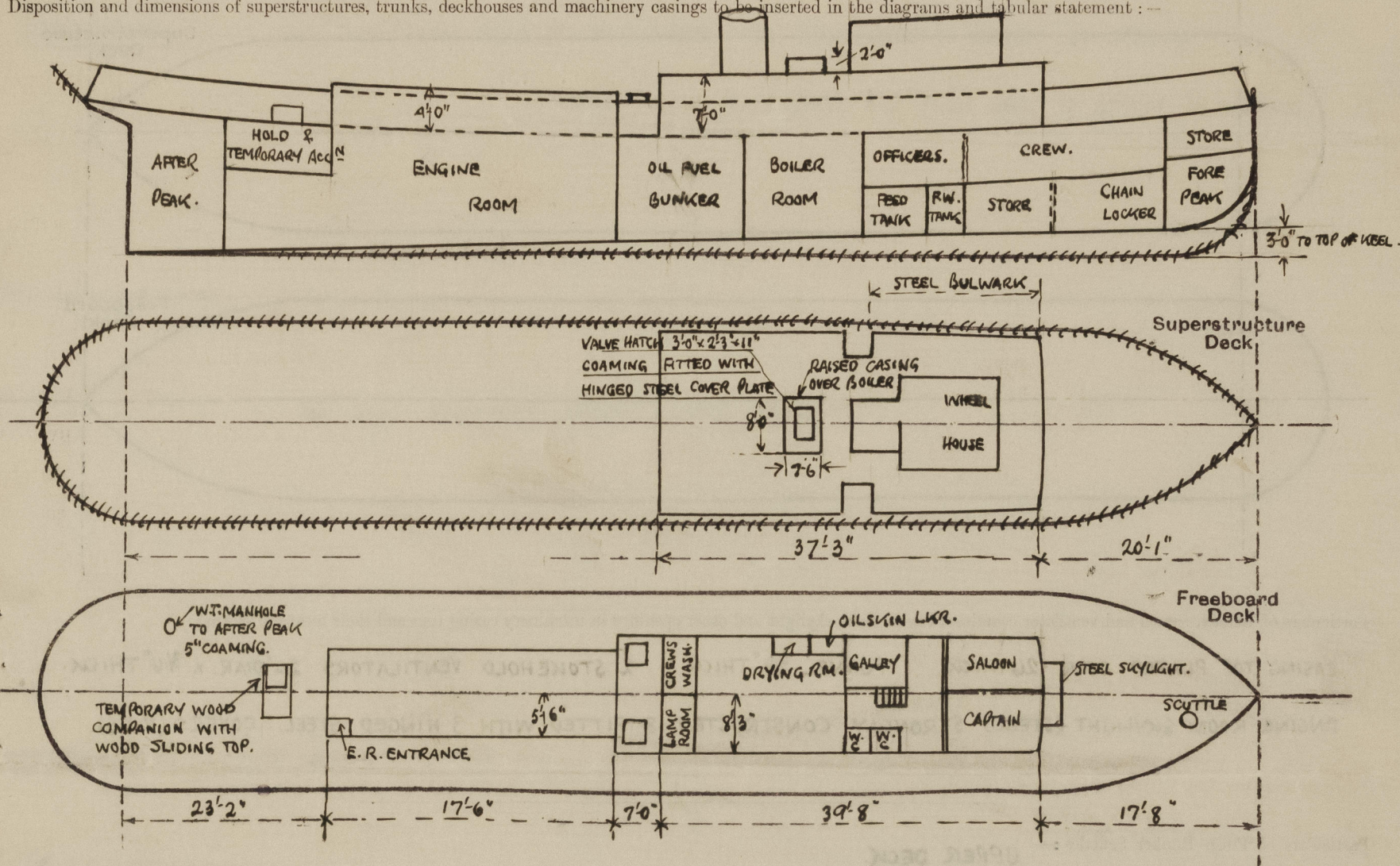
Official Number 169344.

Surveyor's Signature J. Macleod

Nationality and Port of Registry BRITISH - HULL.

Date of Survey During construction

Disposition and dimensions of superstructures, trunks, deckhouses and machinery casings to be inserted in the diagrams and tabular statement : --



Particulars of Superstructures, Trunks, Casings, Deckhouses.

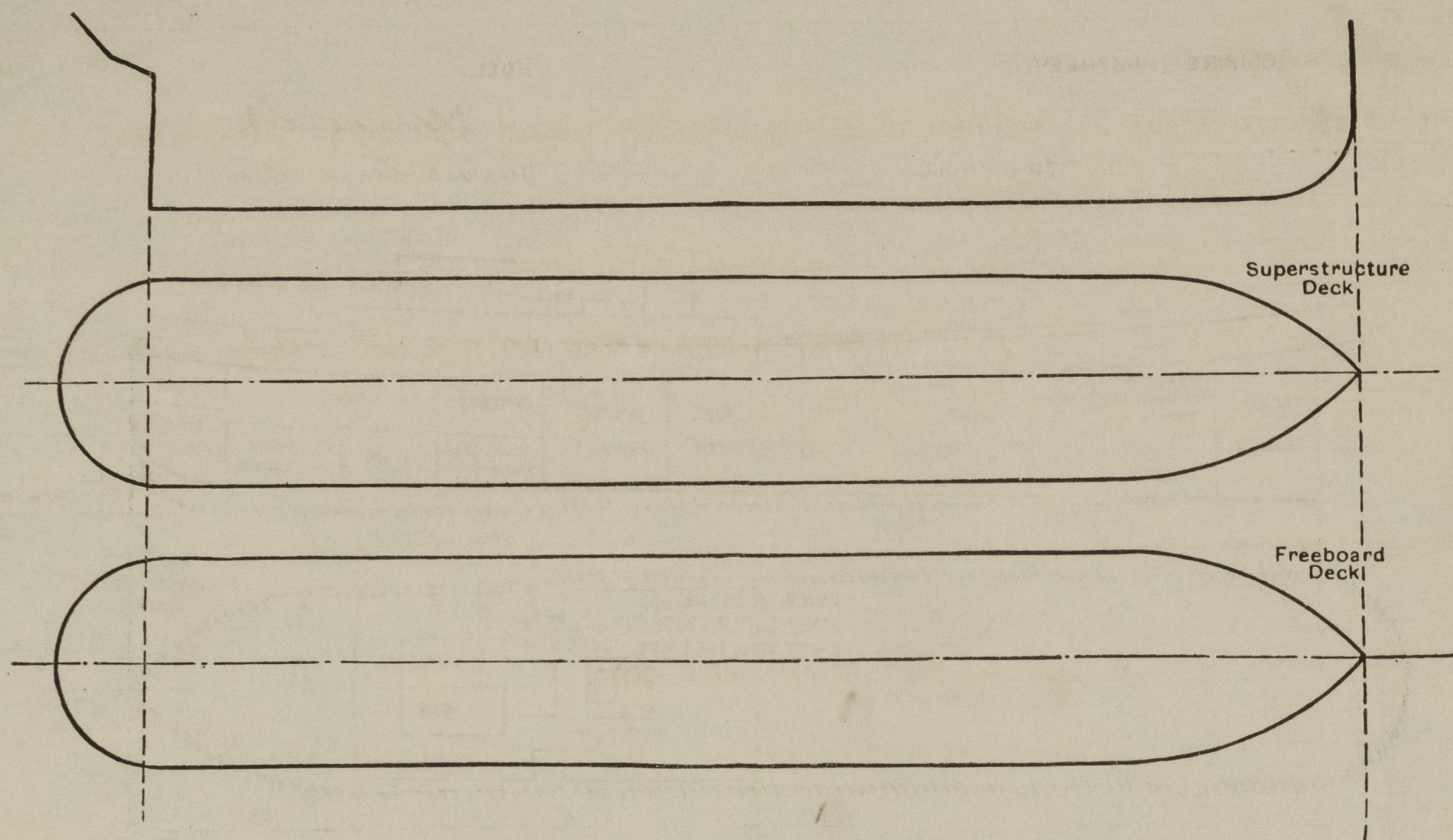
| | Coaming | Plating | Stiffeners | Spacing | End Attachments of Stiffeners | Size of Openings | Height of Sills | Height of Casings |
|---|---------|---------|-------------------------------|-----------|-------------------------------|------------------|-----------------|-------------------|
| Poop Bulkhead ... | ✓ | | | | | | | |
| Raised Quarter Deck Bulkhead ... | ✓ | | | | | | | |
| Bridge, After Bulkhead ... | ✓ | | | | | | | |
| Bridge, Forward Bulkhead ... | ✓ | | | | | | | |
| Forecastle Bulkhead ... | ✓ | | | | | | | |
| Trunk, Aft ... | ✓ | | | | | | | |
| Trunk, Forward ... | ✓ | | | | | | | |
| Exposed Machinery Casings on Freeboard or Raised Quarter Deck ... | ✓ | 28 | 3" x 2 1/2" x 30" | 30" | BKTS AT TOP | 2'6" x 2'3" | 18" | 4'0" |
| Exposed Machinery Casings on Superstructure Deck ... | 31 | 26 | 6 x 3 x 40" / 3 x 2 1/2 x 30" | ABOUT 36" | " " " | 4'9" x 1'9" | 19" | 7'0" |
| Machinery Casings within Superstructures not fitted with Class I Closing Appliances ... | 26 | ✓ | 3 x 2 1/2 x 30" | 30" | " " " | ✓ | ✓ | 2'0" |
| Deckhouses on Flush Deck Ships ... | ✓ | 26 | 3" x 2 1/2 x 30" | 30" | BKTS AT TOP | 4'9" x 1'9" | 18" | 7'0" |

Particulars of Closing Appliances (state if capable of being manipulated from both sides).

| | |
|---|---|
| Poop Bulkhead ... | ✓ |
| Raised Quarter Deck Bulkhead ... | ✓ |
| Bridge, After Bulkhead ... | ✓ |
| Bridge, Forward Bulkhead ... | ✓ |
| Forecastle Bulkhead ... | ✓ |
| Exposed Machinery Casings on Freeboard or Raised Quarter Deck ... | TO BOILER ROOM - 2 STEEL DOORS (STRD) & 1 ON PORT SIDE 4'9" x 1'9" - 19" SILL. OPERATED FROM BOTH SIDES |
| Exposed Machinery Casings on Superstructure Decks ... | TO ENGINE ROOM - WOOD DOOR 2'6" x 2'6" x 1 3/8" THICK - SILL 18". FITTED WITH TEAK SLIDING TOP. ✓ |
| Machinery Casings within Superstructures not fitted with Class I Closing Appliances ... | ✓ |
| Deckhouses on Flush Deck Ships ... | TO SALOON PASSAGE (P & S) WOOD DOORS 4'7" x 1'8" - 18" SILLS. TO OFFICERS & CREWS W.C.s. (STRD) STEEL DOORS 4'9" x 1'9" - 19" SILLS. TO LAMP ROOM (STRD) & CREWS W.C. (PORT) 4'3" x 1'9" STEEL DOORS - 19" SILLS. TO DRYING ROOM & OILSKIN LOCKER - STEEL DOORS WITH 21" SILLS. TO GALLEY (PORT) STEEL DOOR WITH 18" SILLS. DOORS OPERATED BOTH SIDES |

"EMPIRE HUMPHREY."

Particulars of Gangway Cargo and Coaling Ports:—



CASING TOP PLATED OVER 26 THICK. ✓ FUNNEL $\frac{3}{16}$ " THICK. ✓ 2 STROKE HOLD VENTILATORS 24" DIAR. X $\frac{3}{16}$ " THICK.
ENGINE ROOM SKYLIGHT (STEEL) STRONGLY CONSTRUCTED & FITTED WITH 3 HINGED STEEL COVERS (P. & S).

UPPER DECK.

UPPER DECK.

AIR PIPES TO TANKS SUPPLIED WITH WOOD PLUGS
" " " OIL FUEL TANKS " " GAUZE COVER.

NONE.

| Particulars of Freeing Arrangements. | | | | | | |
|---|-------------------|-------------------|-------------------------|------------------|----------------|---------------------|
| | Length of Bulwark | Height of Bulwark | Size of Freeing Ports | Number each side | Area each side | Rule area each side |
| After Well | 105'-0" ✓ | 3'-0" ✓ | 2'-4 1/2" x 1'-2 1/2" ✓ | 4 ✓ | | |
| Forward Well | | | | | | |
| <p>State position of each freeing port { After Well :— 20'-0" - 32'-0" - 47'-0" - 68'-0" FROM A.P. ✓</p> <p>(F. and A. position and height above deck edge) { Forward Well :— 7'-6" ABOVE DECK EDGE. ✓</p> <p>State whether the freeing ports are fitted with shutters, bars, or rails, and give particulars of such :— 2 BARS FITTED. ✓</p> <p>Additional area where sheer is less than standard.</p> | | | | | | |

PARTICULARS OF PROTECTION TO OPENINGS, ETC.

| HATCHWAYS ON FREEBOARD AND SUPERSTRUCTURE DECKS. | | | | | | | | | |
|--|---|---------------------------|--------------------|---|------------------------------|---|--|--|--|
| | | | UPPER DECK | | TRUNK TOP. | | | | |
| Description of Hatchway | | | HATCH TO HOLD AFT. | | O.T. HATCH TO BUNKER (P. 25) | | | | |
| Dimensions of Hatchway | | | 5'-0" x 3'-0" ✓ | | 2 x 2'-6" x 2'-6" ✓ | | | | |
| COAMINGS | { | Height above Deck ... | 18" | ✓ | 12" | ✓ | | | |
| | | Thickness { Sides ... | 3/8" | ✓ | 3/8" | ✓ | | | |
| | | { Ends ... | 3/8" | ✓ | 3/8" | ✓ | | | |
| | | Stiffeners ... | ✓ | | ✓ | | | | |
| | | Brackets, Stays ... | | | | | | | |
| HATCH BEAMS | { | Number | NONE | ✓ | NONE | | | | |
| | | Spacing | | | | | | | |
| | | Scantling and Sketch ... | | | | | | | |
| FORE AND AFTERS | { | Number | NONE | ✓ | NONE | | | | |
| | | Spacing | | | | | | | |
| | | Unsupported Lengths ... | | | | | | | |
| | | Scantling* and Sketch ... | | | | | | | |
| | | Bearing Surface ... | | | | | | | |
| HATCH COVERS | { | Material | DOUGLAS FIR | | STEEL PLATE 3/8" THICK | | | | |
| | | Thickness | 2 1/2" | ✓ | SECURED BY 7/8" DIAR. | | | | |
| | | How fitted (see P. 1) | CLOSE LINED | ✓ | EYEBOLTS WITH G.M. | ✓ | | | |
| | | Bearing Surface ... | 3" | | TOGGLES. | | | | |
| Spacing of Cleats | | | 24" | ✓ | ✓ | | | | |
| Number of Tarpaulins | | | 2 | ✓ | | | | | |

*Are wood fore and afters steel shod at all bearing surfaces? ✓
 Are battens and wedges efficient and in good condition? Yes.
 Are tarpaulins in good condition and in accordance with rule requirements? Yes.
 Are lashings provided in accordance with rule requirements? Yes.

Particulars of any special features:—

Endorsement at first survey and at surveys for renewal of Certificate:—

The fittings and appliances are in accordance with the particulars shown on this form (or as now modified) and are in good condition.

