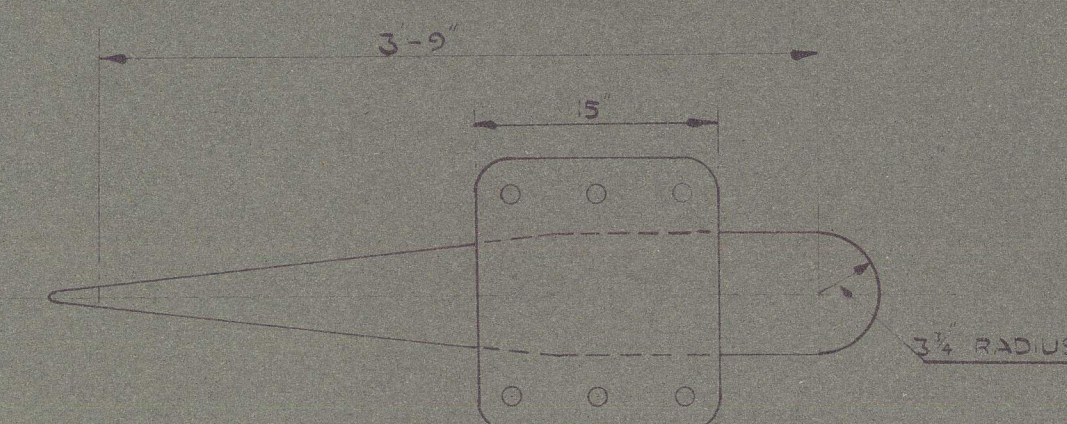
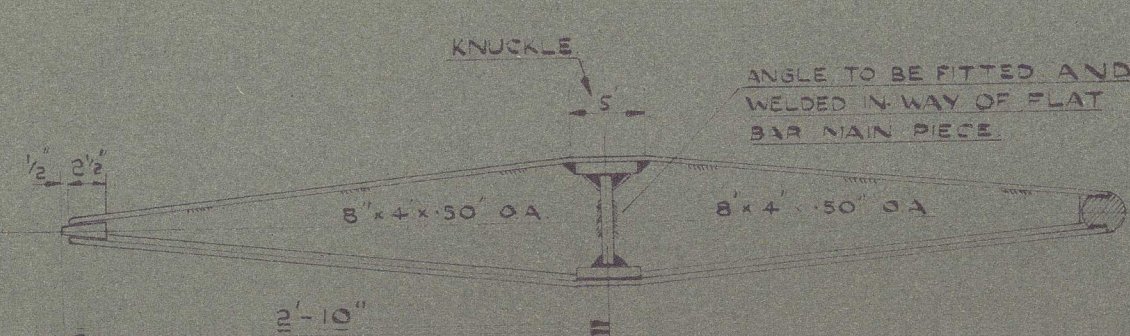


DRAWING N° 243/10 MOTOR TRAWLER 'MUKSUN' RUDDER & STERNFRAME

SCALE :- 1" = 1 FOOT & AS SHOWN.



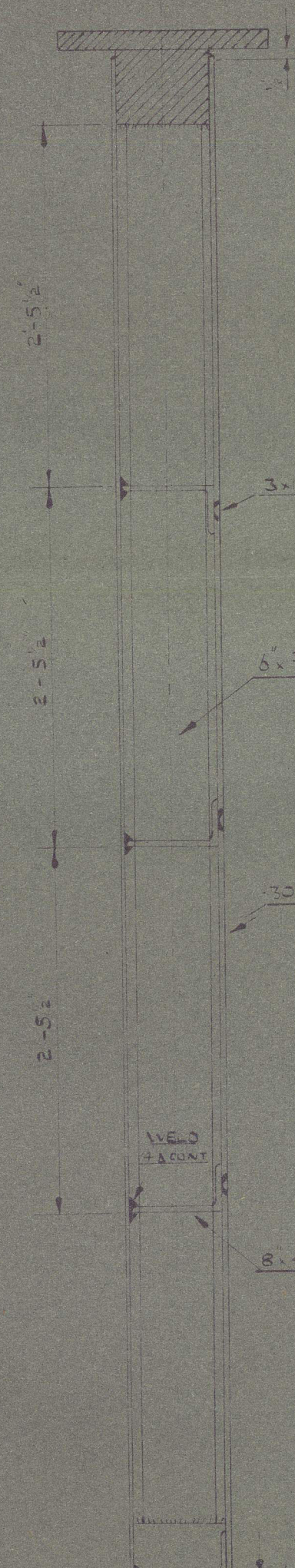
PLAN AT TOP
SCALE = 1" = 1'-0"



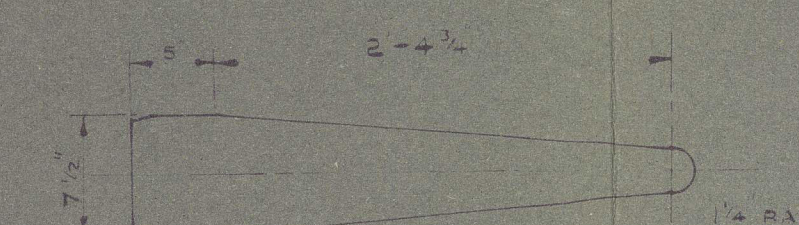
PLAN AT STERN
SCALE = 1" = 1'-0"



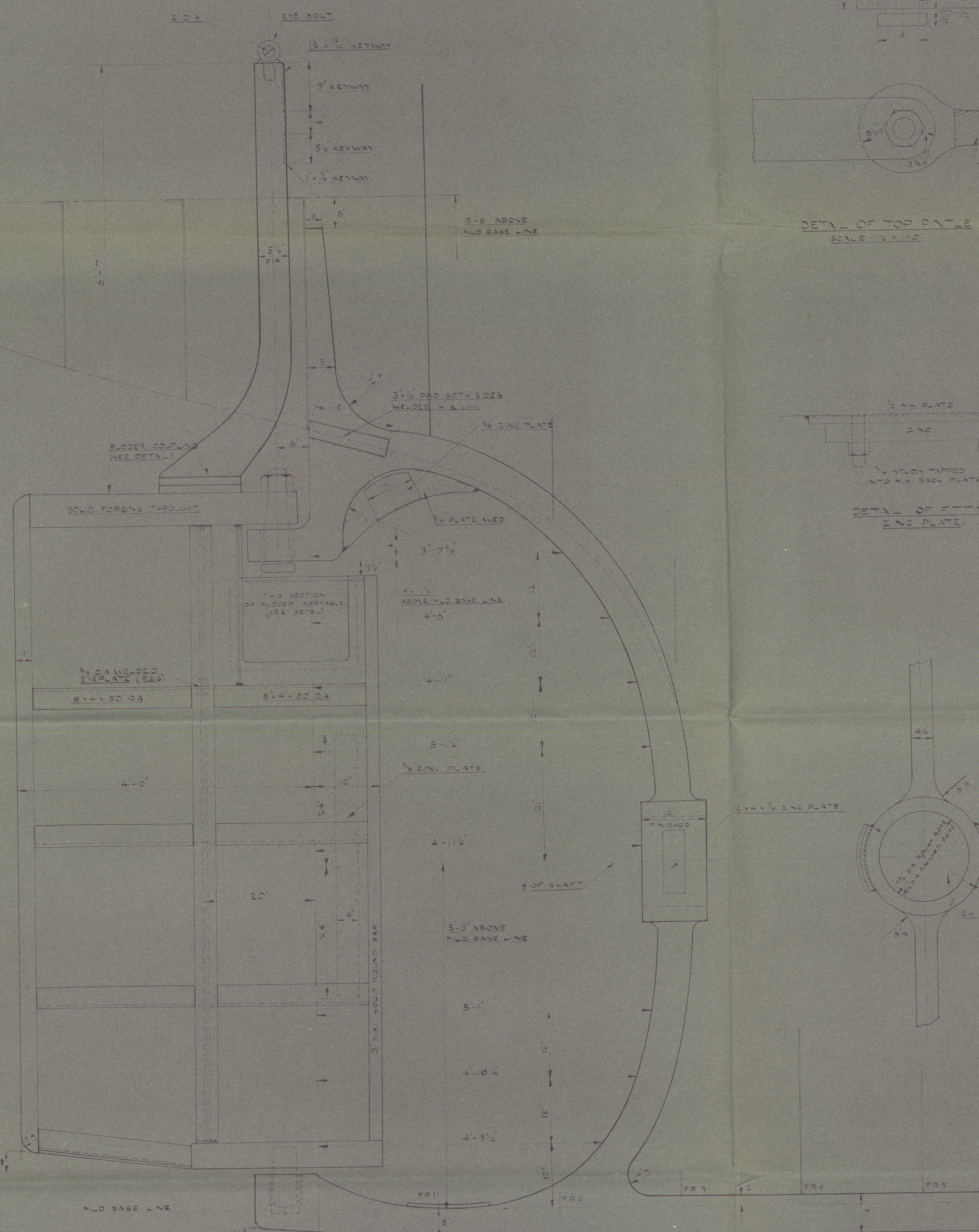
PLAN AT BOTTOM
SCALE = 1" = 1'-0"



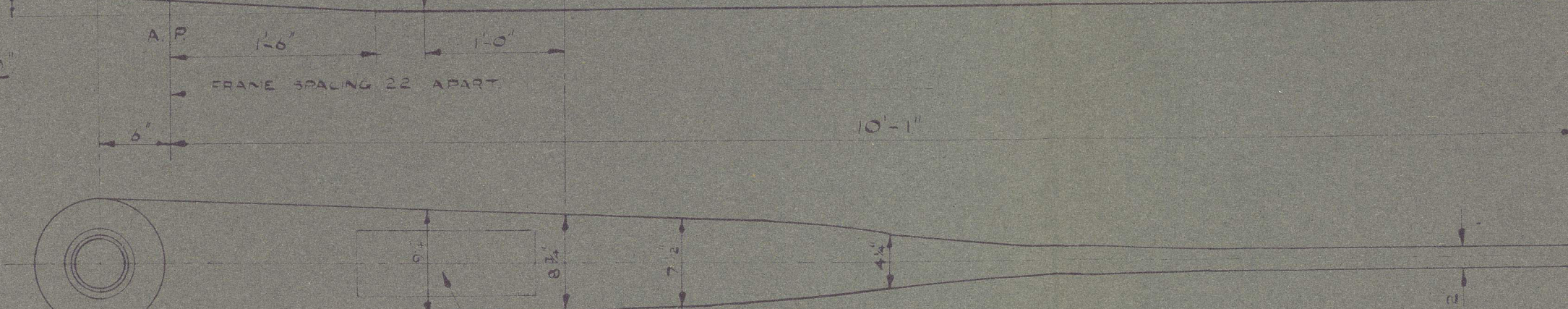
SECTION
SCALE = 1" = 1'-0"



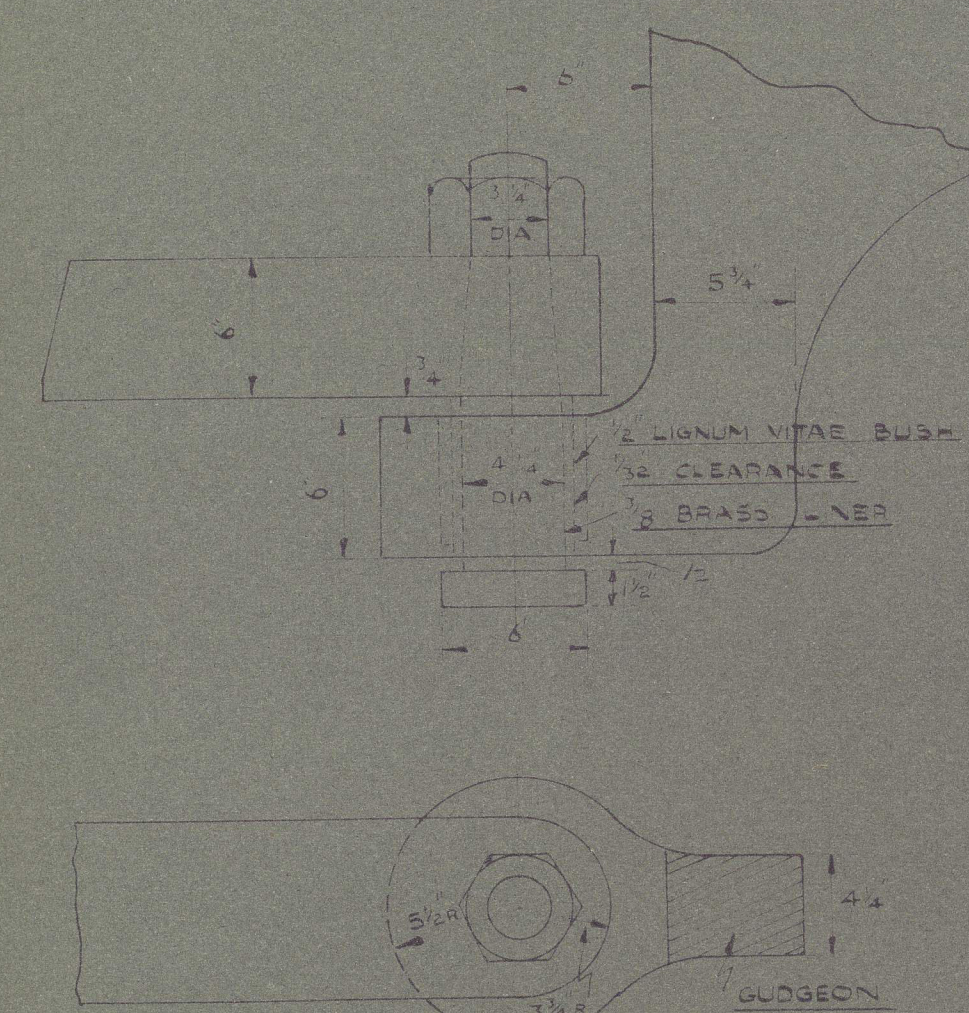
DETAIL OF BOTTOM GUDGEON
SCALE = 1" = 1'-0"



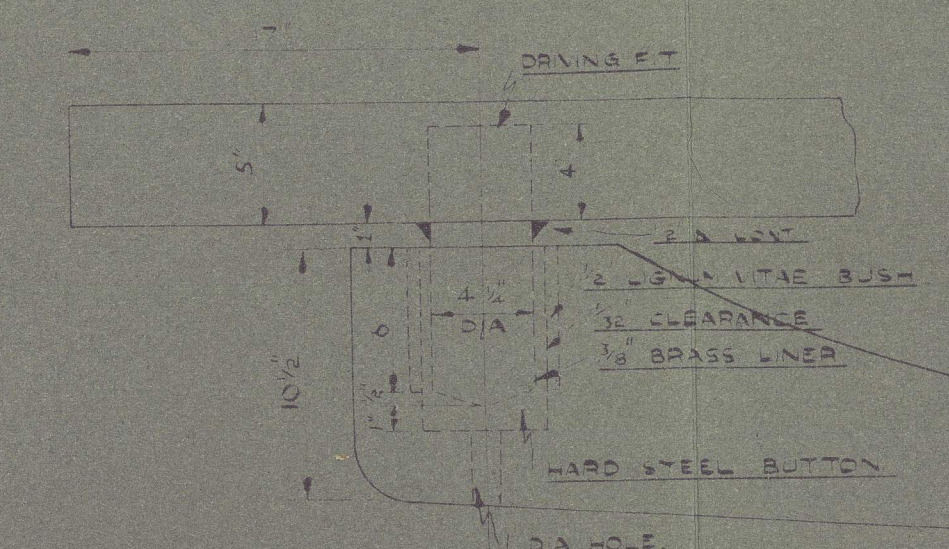
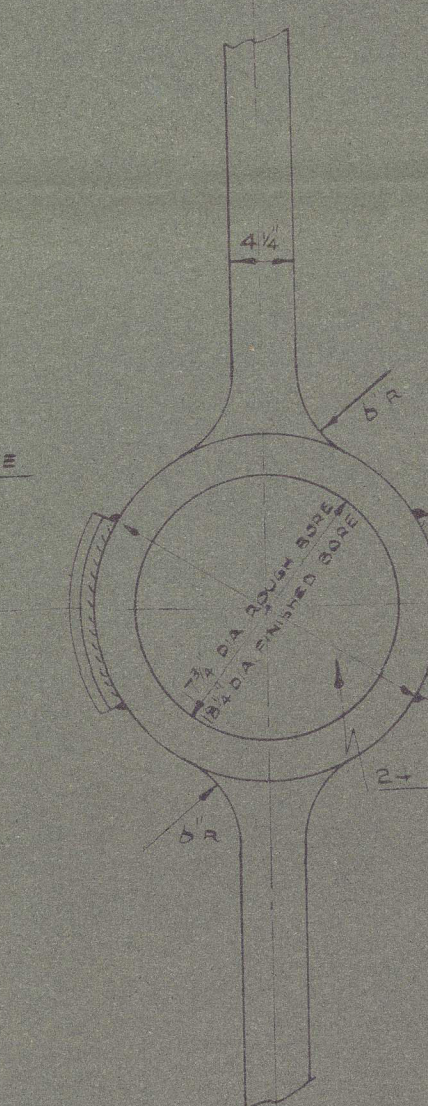
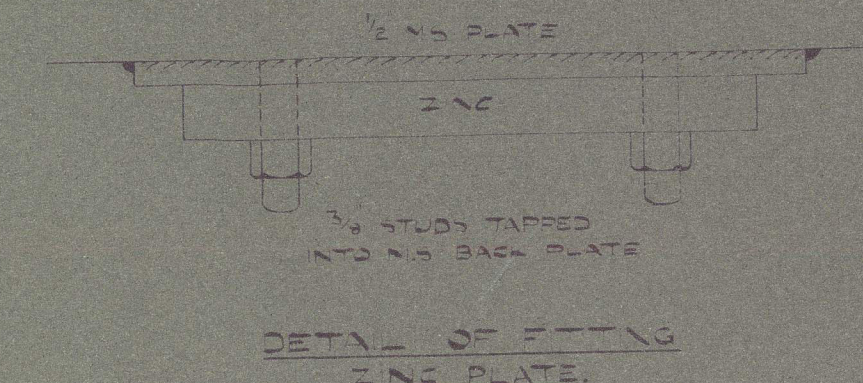
SCALE = 1" = 1'-0"



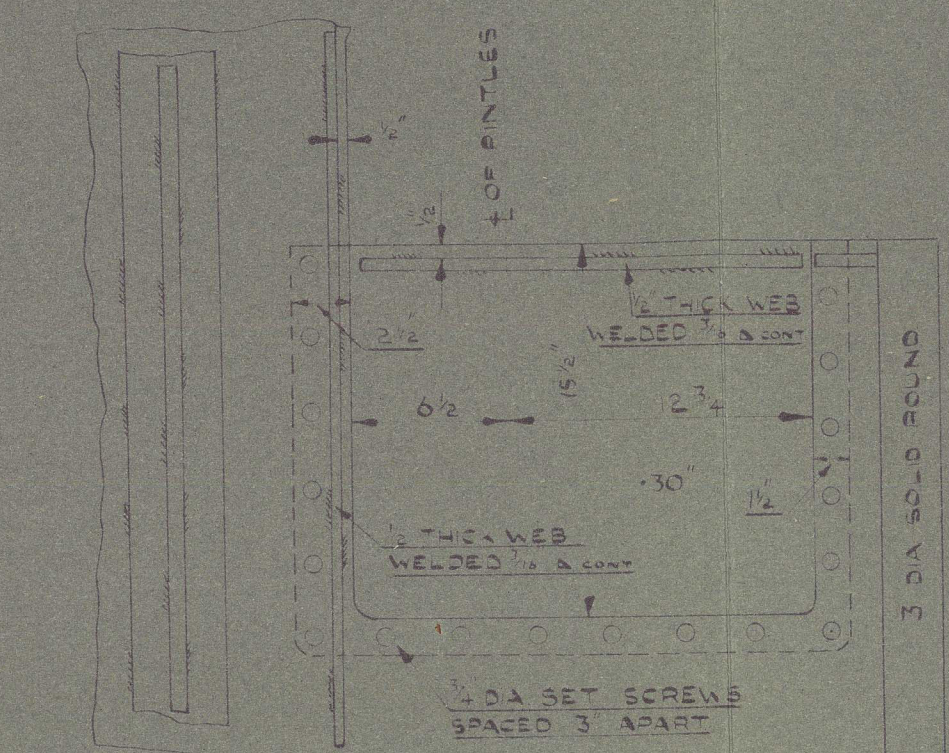
SCALE = 1" = 1'-0"



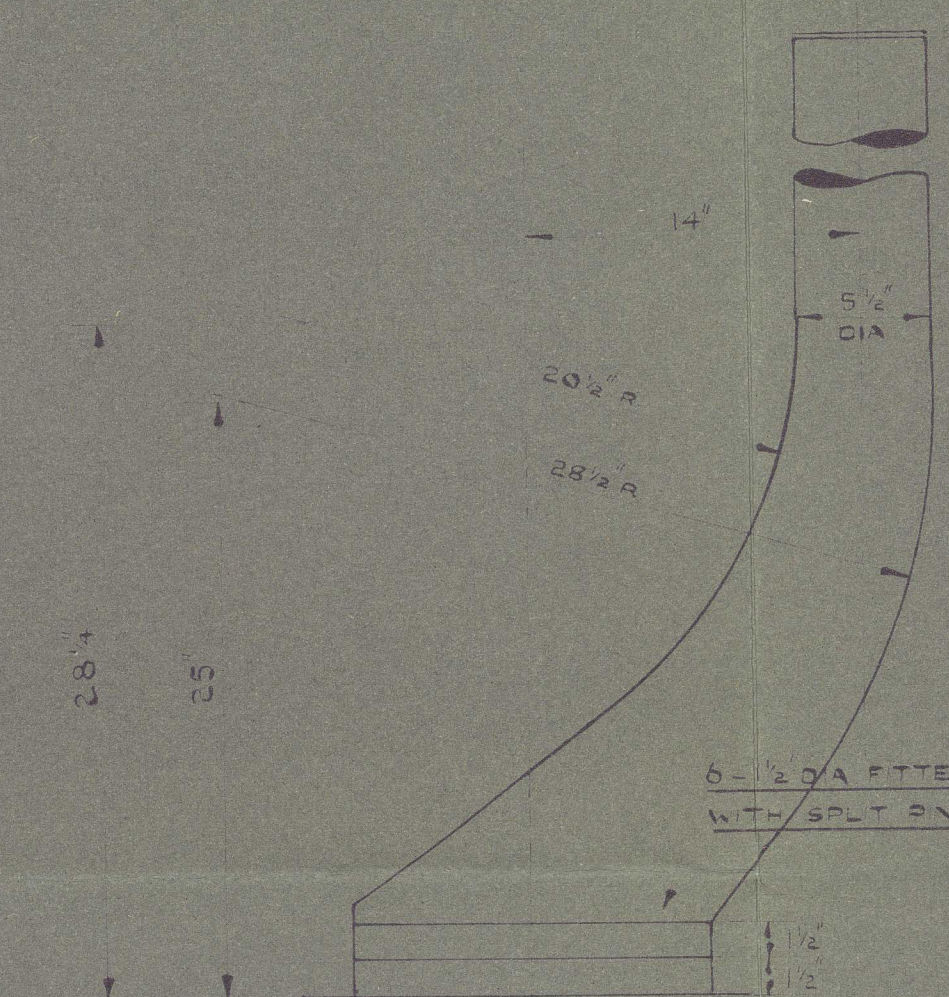
DETAIL OF TOP PINTLE
SCALE = 1" = 1'-0"



DETAIL OF BOTTOM PINTLE
SCALE = 1" = 1'-0"



DETAIL OF PORTABLE SECTION
SCALE = 1" = 1'-0"



DETAIL OF RUDDER COUPLING
SCALE = 1" = 1'-0"

BROOKE MARINE LTD	
SHIPBUILDERS & ENGINEERS, LOWESTOFT, ENGLAND	
STERNFRAME & RUDDER.	
DRAWN BY: M. BROWN	SCALE: 1" = 1'-0"
TRACED BY: M. BROWN	AS SHOWN
CHECKED BY: M. BROWN	4.7.56
APPROVED BY: M. BROWN	243/10
SHIP N°: 243/10	243/10-002

(KA)

Brook Main N° 243

Simpson & Rudder as filed

Spawick Report N° 133835

H H

" MUKSUN" ★

RECORDS DEPT.
LONDON

3