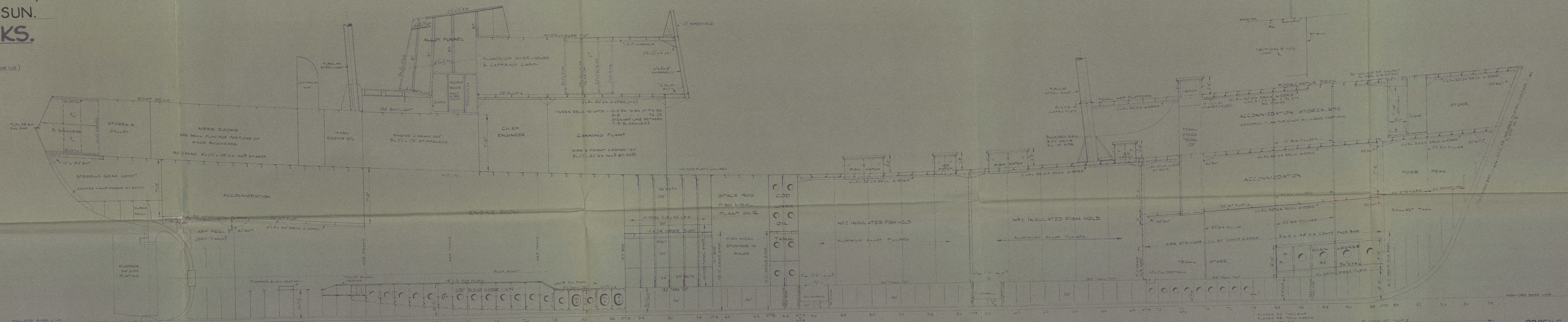


DRAWING N° 243/3.

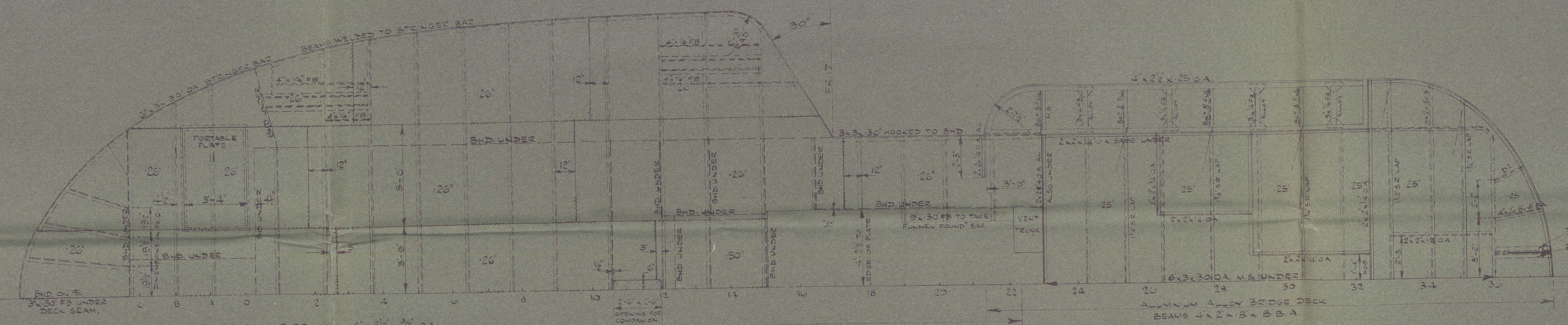
MOTOR TRAWLER MUKSUN.
PROFILE & DECKS.

SCALE $1/4" = 1 \text{ FOOT}$.

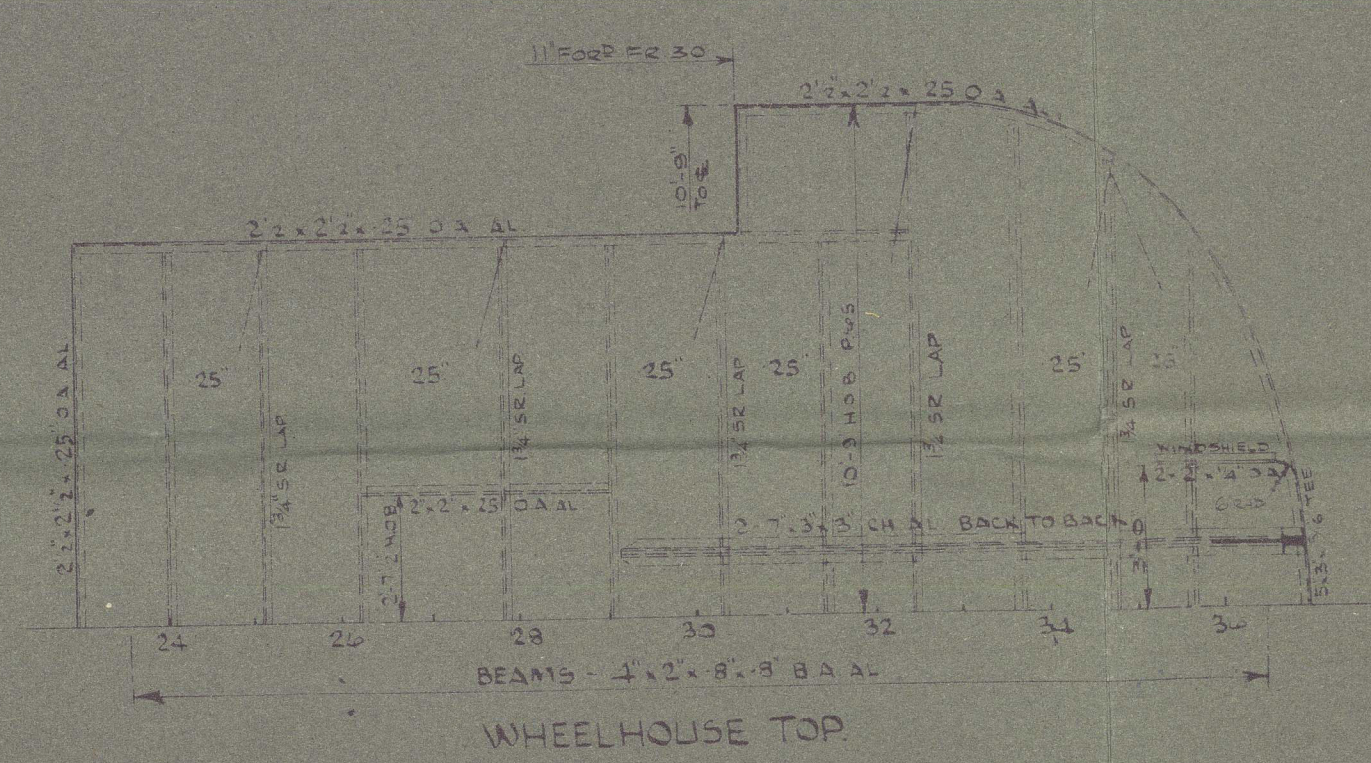
CLASS - LLOYDS #100 A1 MOTOR TRAWLER (STRENGTHENED FOR ICE)
DIMENSIONS - L 67' 17 1/2", B MLD 32' 0", D MLD 16' 6"
LLOYDS NUMERALS - LKD 2705, L(B-D) 8201



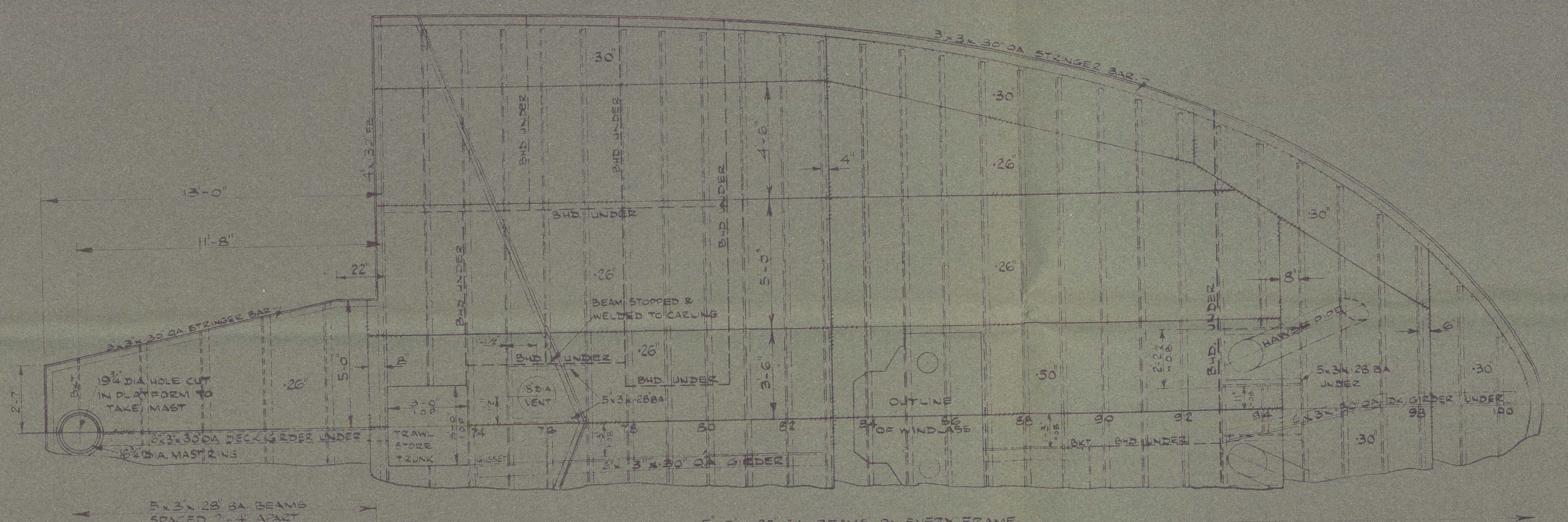
PROFILE.



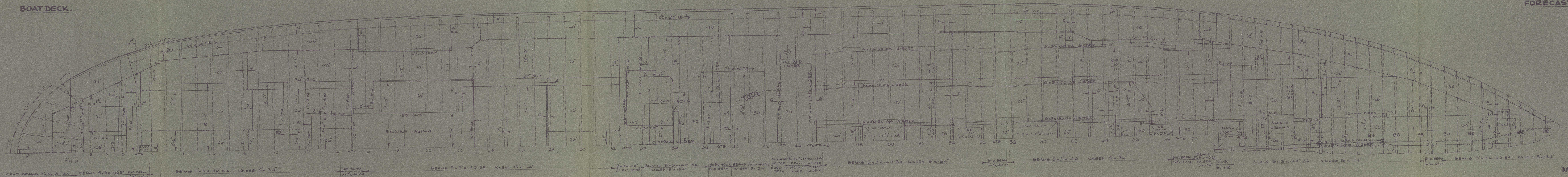
BOAT DECK.



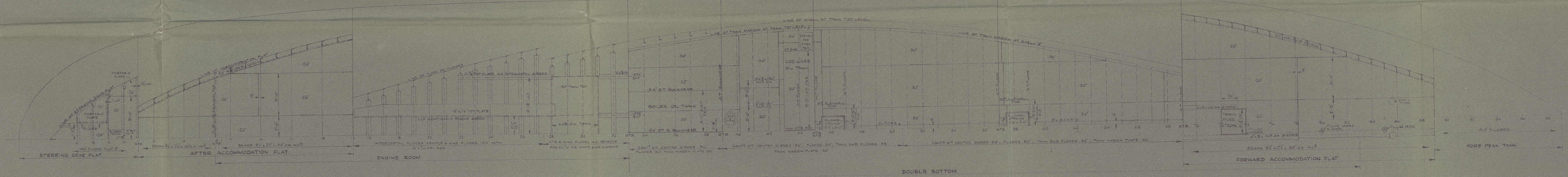
WHEELHOUSE TOP.



FORECASTLE DECK.



MAIN DECK.



DOUBLE BOTTOM.

BROOKS MARINE LTD
SHIPBUILDERS AND ENGINEERS
LONDON, ENGLAND.
PROFILE AND DECKS
DRAWN BY THE
CHECKED BY
APPROVED BY
SHIP NO.
4758
DRAWING NO.
243/3
SCALE
1/4" = 1 FOOT
© 1949

(2A)

Brooke Marine Lta L^o 243

"MURSLIN" ★

Profile & Decks - as built

Spewick Report L^o 133835

HH

RECORDS DEPT..
LONDON.

(2)