

LLOYD'S REGISTER OF SHIPPING

Index No.

(For London Office only.)

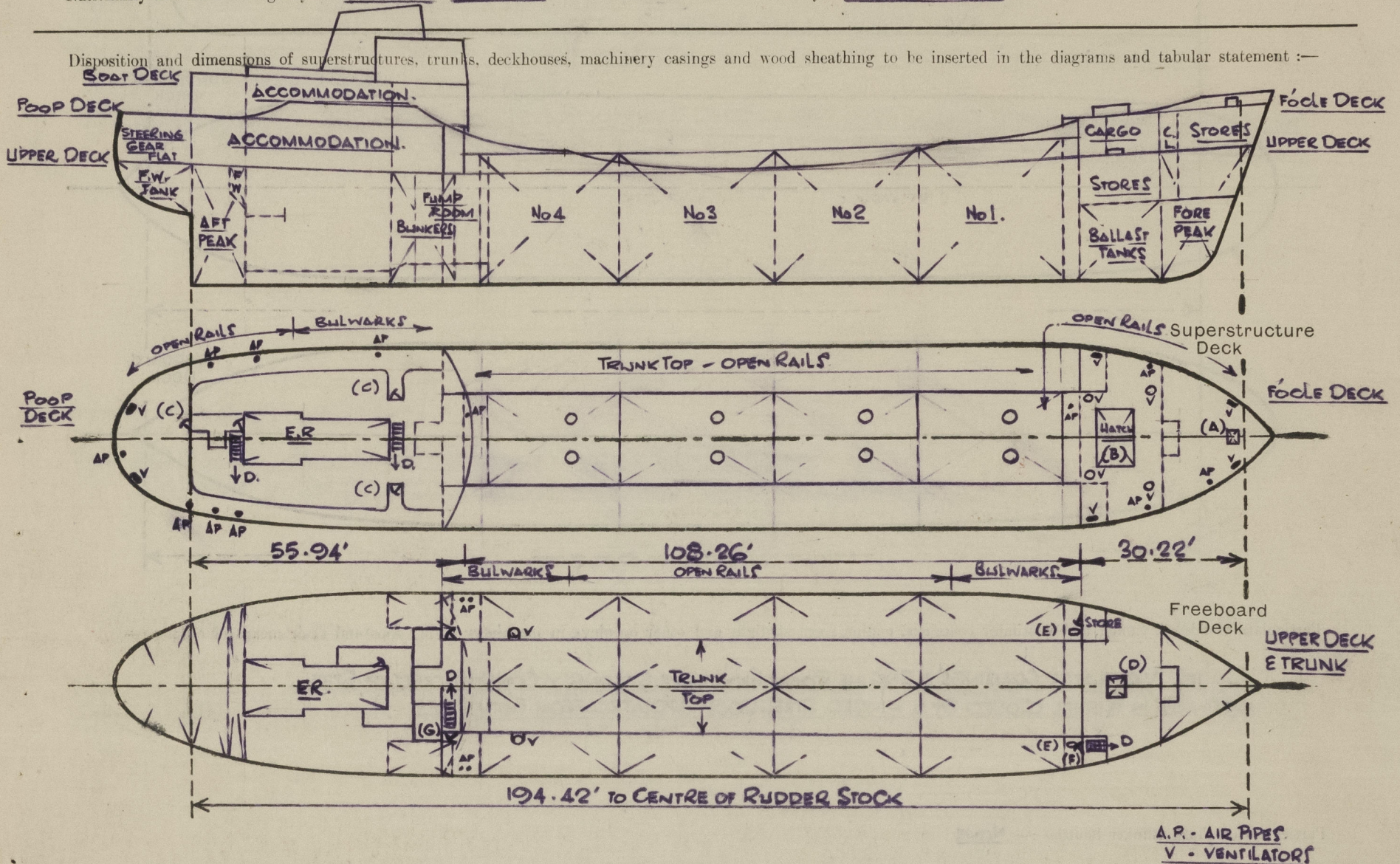
UNITED WITH THE BRITISH CORPORATION REGISTER

SURVEYS FOR FREEBOARD.

(CONDITIONS OF ASSIGNMENT.)

NEWCASTLE-ON-TYNE ^{Fbd.} 116428.Ship's Name "FULBOROUGH" Ex "GERTRUDE WEINER"Port of Survey NEWCASTLE ON TYNEOfficial Number 300994Surveyor's Signature S. SandersonNationality and Port of Registry BRITISH LONDONDate of Survey AUGUST 1959

Disposition and dimensions of superstructures, trunks, deckhouses, machinery casings and wood sheathing to be inserted in the diagrams and tabular statement :-

A.P. - AIR PIPES
V - VENTILATORS

Particulars of Superstructures, Trunks, Casings, Deckhouses.

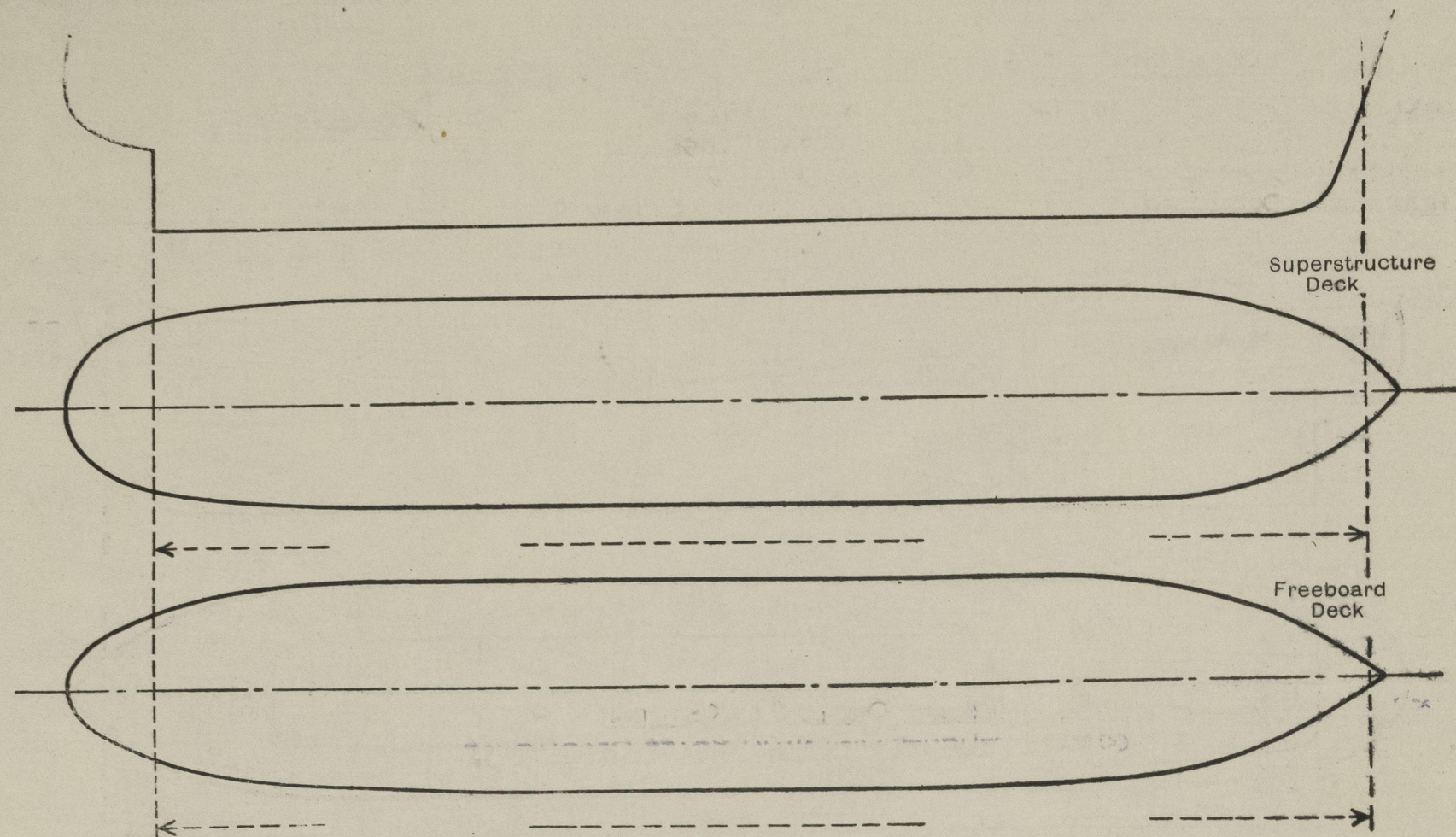
	Coaming	Plating	Stiffeners	Spacing	End Attachments of Stiffeners	Size of Openings	Height of Sills	Height, Beam to Beam
Poop Bulkhead	✓	30" ✓	6 1/2" x 28" B.P. 1	23 1/2" ✓	BRACKETS @ TOP & BOTTOM	NONE	-	7' 2"
Pump Room & Stores Raised Quarter Deck Bulkhead AT POOP FRONT	✓	30" ✓	6 1/2" x 28" B.P. 1	23 1/2" ✓	DO. (G)	2 @ 4'-5"-2'-1"	24" ✓	7' 2"
Bridge, After Bulkhead	✓	✓	✓	✓	✓	✓	✓	✓
Bridge, Forward Bulkhead	✓	✓	✓	✓	✓	✓	✓	✓
Forecastle Bulkhead	✓	25" ✓	3" x 20" B.P. 1	23 1/2" ✓	E.W. @ TOP & BOTTOM (F)	2 @ 4'-5"-2'-1"	24" ✓	6' 7 1/2"
Trunk, Aft	✓	30" ✓	4 1/2" x 26" B.P. 1 LONGITUDINALS	18 1/2" ✓	BRACKETS	NONE	-	3' 1 3/8"
Trunk, Forward	✓	✓	✓	✓	✓	✓	✓	✓
Exposed Machinery Casings on Freeboard or Raised Quarter Decks ...	✓	✓	✓	✓	✓	✓	✓	✓
Exposed Machinery Casings on Superstructure Decks (BOAT DECK) ...	✓	20" ✓	2 1/2" x 20" B.P. 1	21 1/2" ✓	BRACKETS @ TOP CONTINUOUS AT BOTTOM	NONE	-	1'-11"
Machinery Casings within Superstructures not fitted with Class I Closing Appliances	✓	✓	✓	✓	✓	✓	✓	✓
Deckhouses and Pump Room Entrances	SEE PUMP ROOM & STORES AT POOP FRONT							

Particulars of Closing Appliances (state if capable of being manipulated from both sides).

Poop Bulkhead	NONE ✓
Raised Quarter Deck Bulkhead	✓
Bridge, After Bulkhead	✓
Bridge, Forward Bulkhead	✓
Forecastle Bulkhead	2 OPENINGS (1 P.C.I.S) TO STORES AND FORE LOWER SPACES, CLOSED BY HINGED STEEL W.T. DOORS OPERATED FROM BOTH SIDES AND FITTED WITH 10" BULLSEYES (CLASS I) ✓
Exposed Machinery Casings on Freeboard or Raised Quarter Decks ...	✓
Exposed Machinery Casings on Superstructure Decks (BOAT DECK) ...	NONE ✓
Machinery Casings within Superstructures not fitted with Class I Closing Appliances	✓
Deckhouses and Pump Room Entrances	2 OPENINGS (1 P.C.I.S) TO STORES & PUMPROOM AT POOP FRONT CLOSED BY HINGED STEEL W.T. DOORS OPERATED FROM BOTH SIDES AND FITTED WITH 10" BULLSEYES (CLASS I) ✓

Pulborough.

Particulars of Gangway Cargo and Coaling Ports :— NONE



Particulars of Scuppers and Sanitary Discharge Pipes :—

FORECASTLE DECK SCUPPERS DRAIN TO OPEN FREEBOARD DECK.
FORECASTLE SPACES DRAIN TO OPEN FREEBOARD DECK, PLUGS & CHAINS FITTED.
TRUNK TOP SCUPPERS DRAIN TO OPEN FREEBOARD DECK.
FREEBOARD DECK DRAINS OVERBOARD THROUGH SCUPPERS CUT IN SHEERSTRAKE
POOP DECK SCUPPERS DRAIN TO OPEN FREEBOARD DECK AND OVERBOARD THROUGH SHELL, DISCHARGING
ABOVE FREEBOARD DECK, OPEN ENDED.
ACCOMMODATION IN POOP; SOIL, WASTE & SCUPPERS DISCHARGE OVERBOARD THROUGH SHELL APPROX 9"
ABOVE FREEBOARD DECK & FITTED WITH 4@ 1 1/2", 4@ 2" & 3@ 4" N.R. VALVES AT OUTBOARD ENDS.

Particulars of Side Scuttles and Deadlights :—

POOP ACCOMMODATION (ABOVE FREEBOARD DECK) SIDES & FRONT. -
14" DIAM. HINGED BRASS SIDELIGHTS WITH NAVAL BRASS DEADLIGHTS

Vertical distance of Sill of lowest Side Scuttle above top of keel..... 20'-4"
Distance from amidships to centre of lowest Side Scuttle..... 41' 8" ΔFT.

Particulars of Companionways :—
(including those incorporated in deckhouses and masthouses)

- (F) UPPER DECK TO FO'LE STORE SPACE STARBOARD SIDE - 1 @ 4'-5". 2'-1", SILL 24"
- (G) " " " " PLUMP ROOM AFT " " " " 1 @ 4'-5". 2'-1", SILL 24"
- (C) POOP DECK TO ACCOMMODATION, PORT, STARBOARD & AFT END - 3 @ 4'-10". 2'-4", SILLS 18"
- ALL HINGED STEEL W.T. DOORS & FITTED WITH 10" BULLSEYES, OPERATED FROM BOTH SIDES

Particulars of Ventilators in exposed positions on freeboard and superstructure decks :—

FORECASTLE DECK - 4 @ 8" DIAM - 36" x 15" COAMING - M.V. TO FOOLE SPACE ✓
 " " " 4 @ 6" x 3" - 31" x 10" COAMING - G N TO STORE SPACES

UPPER DECK . 2 @ 10' DIAM . 70% . 20' COAMING . M.V TO PUMP ROOM . EFFICIENTLY STAYED
POOP DECK . 4 @ 6' 3" . 27% . 19' COAMING . G.N. TO STEERING GEAR FLAT ✓

M.V. - MUSHROOM VENTS - STEEL PLUGS & CANVAS COVERS PROVIDED.
G.N - GOOSENECK VENTS - WINGED STEEL W.T. FLAPS FITTED. ✓

Particulars of Air Pipes in exposed positions on freeboard, raised quarter, or superstructure decks:—

<u>FORECASTLE DECK.</u>	1 @ 3'DIAM. 34 1/2" HIGH	X	TO BALLAST TANK	- S.T.
"	1 @ 3'DIAM. 29" HIGH	X	" " "	- S.T.
"	1 @ 3'DIAM. 31" HIGH	X	" FORE PEAK	- S.T.

TRUNK TOP - 1 @ 3" DIAM. - 23" HIGH — FORWARD COFFERDAM - G.N.
 " " - 1 @ 1 1/2" DIAM. - 40" HIGH — AFT COFFERDAM - G.N. - EFFIC

UPPER DECK - 2@1 1/2' DIAM. 72' HIGH ✓
 " " 2@1 3/4' DIAM. 36' HIGH ✓

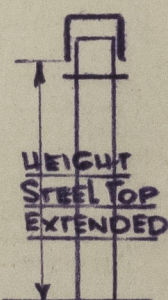
LWS. OIL TANKS IN PUMP ROOM.
 SEA VALVE CHESTS - G.N.

POOP DECK - 2@ 2'DIAM - 36" HIGH ✓
" " 3@ 3'DIAM - 36" HIGH ✓

TO FRESH WATER, DOMESTIC
F. AFT PEAK - S.T.

1 @ 2" DIAM. 36" HIGH — SEA VALVE CHEST - G.N.

* GALZE & CANVAS COVER
PROVIDED



S.T- STEEL TOPS CANVAS
COVERS PROVIDED ✓
G.N- GOOSENECK WOOD
PLUGS PROVIDED. ✓

Particulars of Guard Rails and Bulwarks :—

FORECASTLE DECK - SIDES & ENDS - OPEN RAILS = 3'-4" HIGH WITH 3 RODS, STANCHIONS SPACED APPROX. 4'-3" APART.
TRUNK TOP - SIDES - OPEN RAILS = 3'-1" HIGH WITH 2 RODS, STANCHIONS SPACED APPROX. 4'-0" APART.
UPPER DECK - OPEN RAILS = 3'-4" HIGH WITH 3 RODS, STANCHIONS SPACED APPROX. 4'-0" APART.
STEEL BULWARKS 3'-5" HIGH RAIL BAR 5/2" x 2 1/2" x 25 BA. EFFICIENTLY SUPPORTED (SEE SKETCH BELOW)
POOP DECK - SIDES & ENDS - OPEN RAILS = 3'-7" HIGH WITH 3 RODS, STANCHIONS SPACED APPROX. 4'-0" APART. STEEL
BULWARKS 3'-7" HIGH x 20" RAIL BAR 5/2" x 2 1/2" x 25 BA EFFICIENTLY SUPPORTED.

Particulars of Gangways, Lifelines, etc. :—

GANGWAY (TRUNK TOP) - OPEN RAILS AT SIDES (SEE ABOVE)

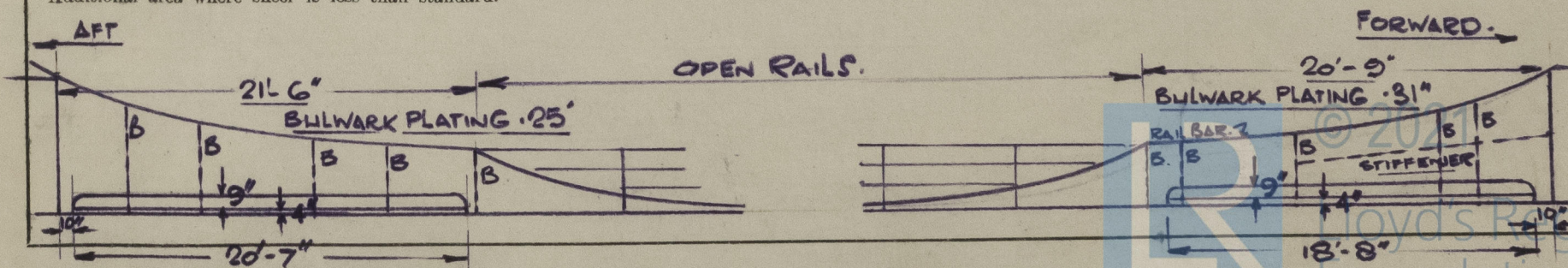
Particulars of Freeing Arrangements.						
	Length of Bulwark	Height of Bulwark	Size of Freeing Ports	Number each side	Area each side	Rule area each side
After well BULWARK ...	21'-6"	3'-5"	20'-7" x 9"	1	15.44 ✓ 15.19 sqft	8.65 sqft ✓
Forward well BULWARK..	20'-9"	3'-5"	18'-8" x 9"	1	14.00 ✓ 13.75 sqft.	8.57 sqft ✓

State position of each freeing port { After Well:—
(F. and A. position and height above deck edge) { Forward Well:—

SEE SKETCH

State whether the freeing ports are fitted with shutters, bars, or rails, and give particulars of such :— OPEN SLOTS

Additional area where sheer is less than standard.



PARTICULARS OF PROTECTION TO OPENINGS, ETC.

HATCHWAYS ON FREEBOARD AND SUPERSTRUCTURE DECKS.									
<div style="display: flex; justify-content: space-around;"> ← UPPER (FREEBOARD) DECK → FOCLE DECK ← </div>									
Description of Hatchway		TO (D)		TO (E)		TO (B)		TO (A)	
		CARGO TANKS ON TRUNK TOP	IN FOCLE TO CARGO HOLD	MANHOLES TO COPPERDAM FORD	CARGO HOLD	FOCLE SPACES			
Dimensions of Hatchway		8 @ 31 1/2"	3'-6" x 3'-0"	1'-7" x 1'-4"	7'-2" x 9'-10"	1'-9" x 1'-9"			
COAMINGS	Height above Deck	31 1/2"	9'		33 3/4"	25'			
	Thickness	.40"	.40"	-	.45"	.45"			
	Stiffeners			-	.45"	.45"			
	Brackets, Stays			-	Ø: 3 1/2" x 43 BA 7" x 3" x 31 BA SLOTTED ENDS	-			
HATCH BEAMS	Number	-	-	-	1	-			
	Spacing	-	-	-	3'-7 1/4"	-			
	Scantling and Sketch	-	-	-		-			
	Bearing Surface	-	-	-	4"	-			
FORE AND AFTERS	Number	-	-	-	9 1/2" x 50"	33 3/4"			
	Spacing	-	-	-	B.P.				
	Unsupported Lengths	-	-	-					
	Scantling* and Sketch	-	-	-					
Bearing Surface		-	-	-	12"				
HATCH COVERS	Material	STEEL	STEEL	STEEL	WOOD	STEEL			
	Thickness	.40"	.40"	.40"	2 1/2"	.40"			
	How fitted	HINGED W.T.	HINGED W.T.	BOLTED W.T.	F.E.A.	HINGED W.T.			
	Bearing Surface	STRONG BACK E 3 TOGGLES	WITH 4 TOGGLES		3'	E 2 TOGGLES			
Spacing of Cleats		-	-	-	24'	-			
Number of Tarpaulins...		-	-	-	2'	-			

Sketch of Hatch Beam

Typical Section Through Hatchside Coaming

*Are wood fore and afters steel shod at all bearing surfaces? ☒

Are battens and wedges efficient and in good condition? ☒ YES

Are tarpaulins in good condition and in accordance with rule requirements? ☒ YES

Are lashings provided in accordance with rule requirements? ☒ YES

Are wood covers fitted with galvanised end bands? ☒ YES

NOTE: CARGO OIL TANK HATCH COVERS ARE FITTED WITH ULLAGE PORTS SECURED BY 3 TOGGLES.

Particulars of any special features :— (Timber Deck-cargo Fittings, Skylights, Sewage Systems, Ash Ejectors, Rubbish Shoots, etc.)

SKYLIGHTS ON BOAT DECK TO ACCOMMODATION:-

STRONGLY CONSTRUCTED OF STEEL WITH HINGED STEEL COVERS
FITTED WITH 10" BULLSEYES.

EXPOSED MACHINERY CASINGS ON BOAT DECK. ✓

2 GLASS (WIRED) LIGHTS FIXED IN CASING SIDE P.E.S.
OPENING 12" x 18" 3' ABOVE DECK ✓

AIR PIPES:-

ENGINE ROOM CASING TOP -
 1@ 1' DIAM - G.N TO COOLING WATER TANK
 2@ 1½' DIAM - G.N - " " " SEA VALVE CHEST
 3@ 3' DIAM - G.N - CONDENSATE & FEED WATER TANK
 2@ 1½' DIAM - G.N - M.E. SUMPS F.O. DRAIN TANK
 1@ 2' DIAM - G.N - LUB. OIL TANK.

G.N. - GOOSENECK - OPENING 4" ABOVE CASING TOP
GAWZES, WOOD PLUGS & CANVAS COVERS PROVIDED.