

P.L.A. 1,500 TON HOPPERS.

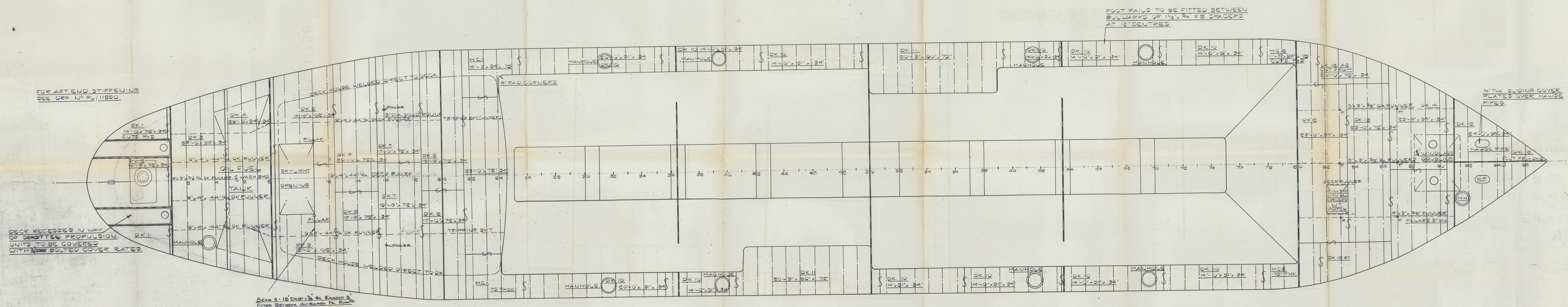
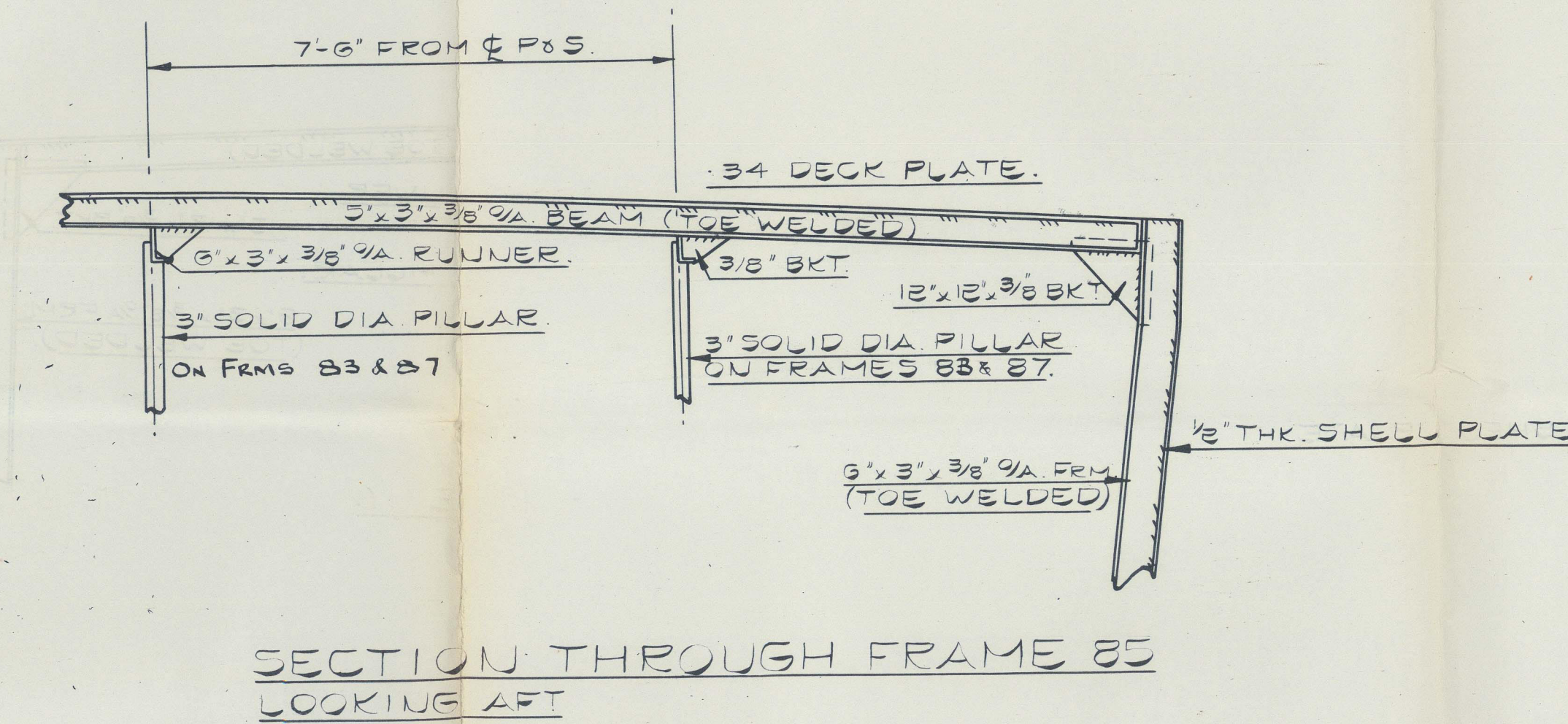
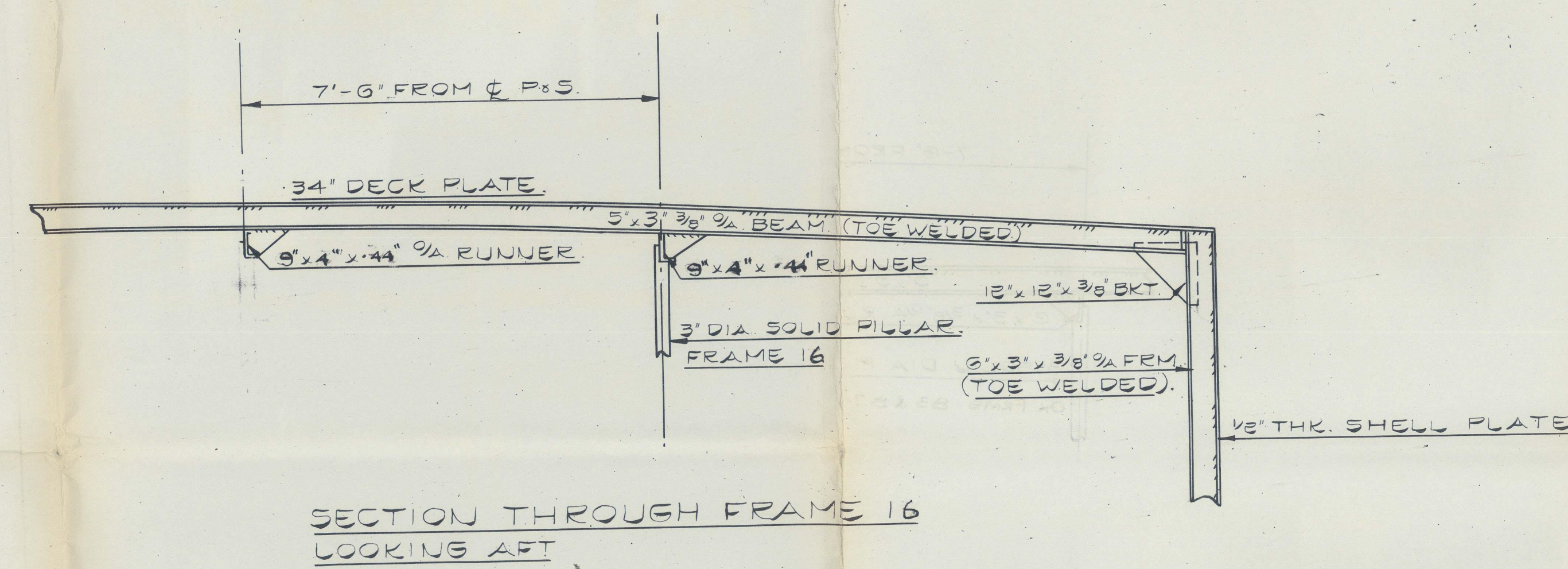
C/9800/W. YARD NOS.927 & 928.

### DECK PLATING PLAN.

SCALES.  $\frac{1}{4}" - 1'-0"$   $\frac{1}{2}" - 1'-0"$   $3" - 1'-0"$

WINDLASS, BOLLARD & DECK FITTINGS.  
STIFFENING TO BE APPROVED.

FOR DETAIL OF SCUTTLES SEE DK FITTINGS PLAN



**HARLAND & WOLFF**  
LIMITED  
SHIP REPAIRING & ENGINEERING WORKS  
NORTH WOOLWICH  
LONDON, E.16

DRAWN BY T.K.R.	AMENDMENTS
CHECKED BY	2-1-G4. OIL TANK & AFTER RECESSES
DATE 18.9.63.	10-1-G4. NEW BUTTS TO PL. A. SPECI. 10-2 G4 STERN EXT.

	ISSUED TO	DATE
3	LLOYDS	18-9-63
3	"	3-1-64
3	PLA	" - " - "
3	"	16-1-64
2	"	16-4-64
	WORKS OFF.	20-4-64
1	M <sup>R</sup> FLETCHER	"
3	M <sup>R</sup> PALMER	"
2	LLOYDS	23-12-64





HARLAND & WOLFF LTD - N° 927

"CYRIL KIRKPATRICK" ★

DECK PLAN

(AS BUILT)

D/S 884

RECORDS DEPT.  
LONDON.

3

This plan has been verified with the approved plans, and includes any modifications and/or additions to the original approved arrangements made during construction which have been approved locally as being in accordance with or equivalent to the original arrangements.

Signature *H. J. Lewis*  
Surveyor to Lloyd's Register

Date 16-12-64



© 2021

Lloyd's Register  
Foundation

012148-012158-0028