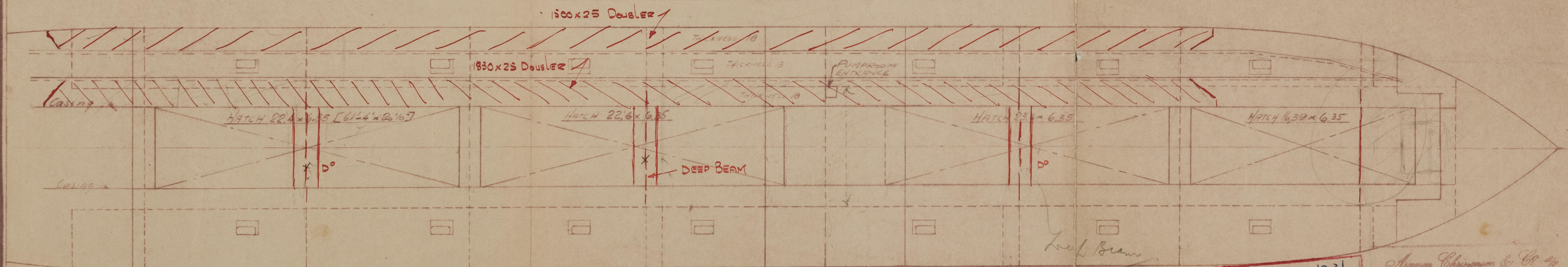
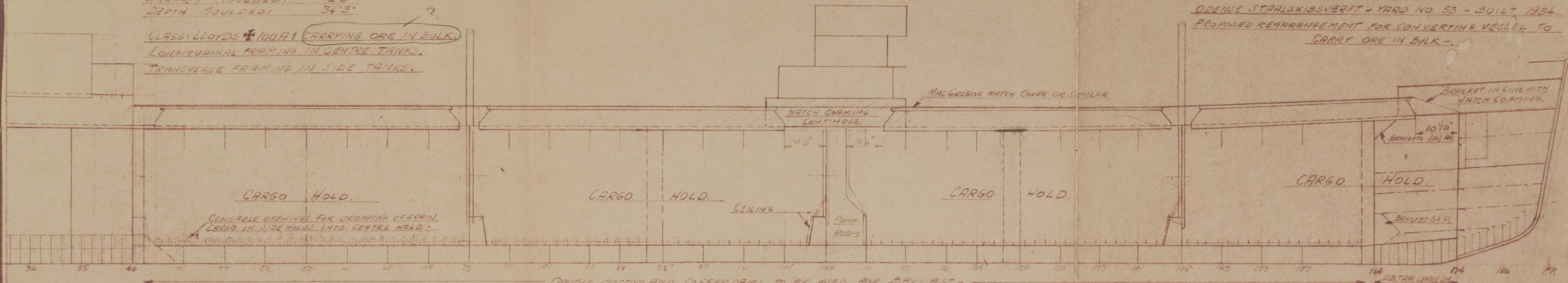


LENGTH BETWEEN PERP: 465'0"
 BREADTH MOULDED: 62'0"
 DEPTH MOULDED: 34'3"

CLASS: LLOYDS 100A1 CARRYING ORE IN BULK.
 LONGITUDINAL FRAMING IN CENTRE TANKS.
 TRANSVERSE FRAMING IN SIDE TANKS.



NOTE:- WITH THE LONGITUDINAL BHDS INTACT AND A TANKER DRAUGHT OF 26.77 FT ASSIGNED THE DECK DOUBLERS ARE TO BE 1500x30 ~/- x 1830x30 ~/-

SEE MIDSHIP SECTION.

M/T "EUROPE"

ODENSE STAALSKIBSVERFT - YARD NO. 53 - BUILT 1934.
 PROPOSED REARRANGEMENT FOR CONVERTING VESSEL TO CARRY ORE IN BULK.

TO ACCOMPANY Kel REPORT No. 1231
 DATED 2.55

Arthur Christensen & Co. 46

M/T "EUROPE"

PROFILE & DECK PLAN.

Lloyd's Register Foundation

012142-012147-0151

011VZO

C.L. 1237.

Fuss 471.

Fuss 764-7.

Profile & Dks

011VZO

^{1c}
"Adams"

M/T "EUROPE"

PROFILE & DECK PLAN.



© 2021

Lloyd's Register
Foundation

012142-012147-0151