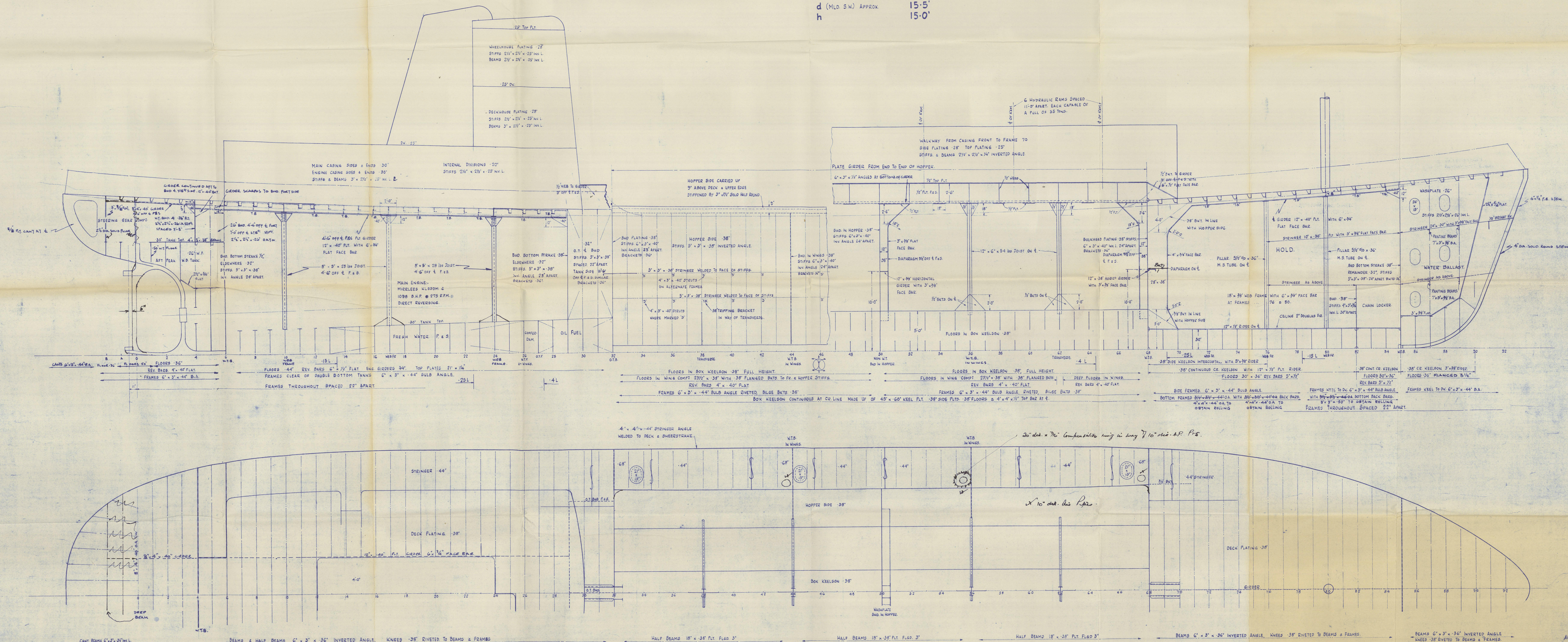


MELBOURNE HARBOR TRUST COMMISSIONERS.  
SINGLE SCREW DIESEL HOPPER BARGES.  
CLASSIFICATION:- LLOYDS \* 100 A.I. HOPPER BARGE.  
DIMENSIONS:- 170'-0" B.P. x 36'-0" MLD. x 17'-0" MLD.

NUMERAL.

L  
B  
D  
d (MLD SW) APPROX  
h

170'-0" (169'-7" to aft side of Rudder Post).  
36'-0"  
17'-0"  
15'-5"  
15'-0"



ALL DECK SEAMS & BUTTS WELDED. BEAMS, GIRDERS & BULKHEADS WELDED TO DECK. BULKHEADS WELDED DIRECT TO SHELL.

RICHARD DUNSTON LTD.  
SHIPBUILDERS,  
THORNE, YORKSHIRE.

DRAWN BY	DATE	15-12-60
TRACED BY	DATE	
CHECKED BY	DATE	
NO	DATE	PARTICULARS
A	1-1-61	MODIFIED PER MECHANICAL DEPT.

APPROVED BY LLOYDS 4-2-61  
APPROVED BY OWNERS 21-2-61

YARD No. S.780/1 DRG. No. 5705/6.A

TITLE:- PROFILE & DECK. 'AS BUILT'

SCALE: 1/4" TO ONE FOOT.



"CHARLES H. MCKAY" ★

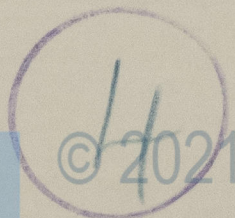
RICHARD DUNSTON (HESSLE) LTD.

YARD NO 780

PROFILE & DECK (AS BUILT)

HUL. F.E. REPT. NO. 67706

RECORDS DEPT.  
LONDON.



Lloyd's Register  
Foundation