

LLOYD'S REGISTER OF SHIPPING

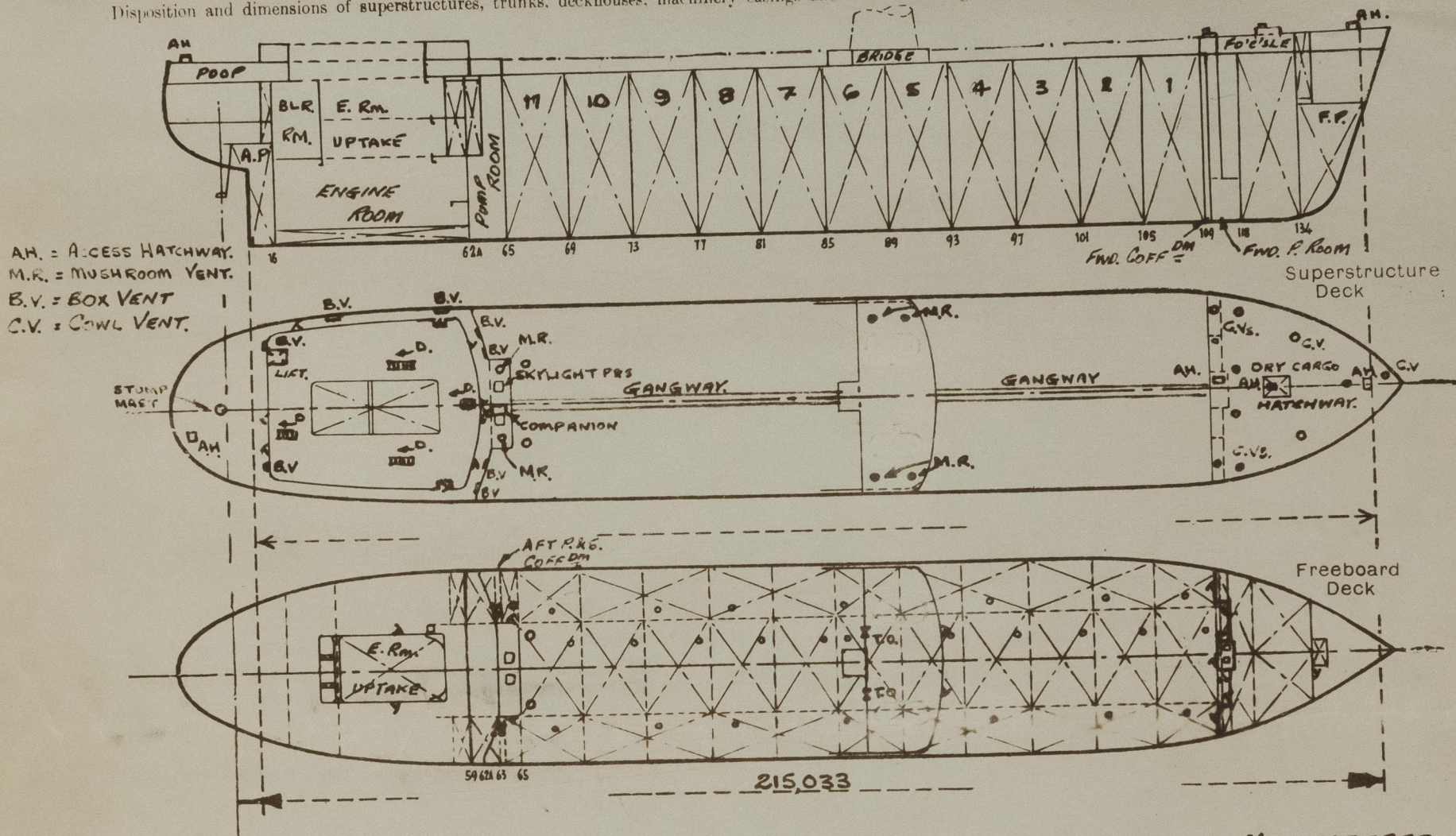
SURVEYS FOR FREEBOARD

(CONDITIONS OF ASSIGNMENT)

Ship's Name..... GIUSEPPE VERDI.
Official Number..... 260
Nationality and Port of Registry..... RUSSIAN. ODESSA.

Port of Survey SESTRI GENOA
Surveyor's Signature E. W. Martin
Date of Survey DURING CONSTRUCTION

Disposition and dimensions of superstructures, trunks, deckhouses, machinery casings and wood sheathing to be inserted in the diagrams and tabular statement:—



ALL DIMENSIONS IN METRIC UNITS & GIVEN IN MILLIMETRES.

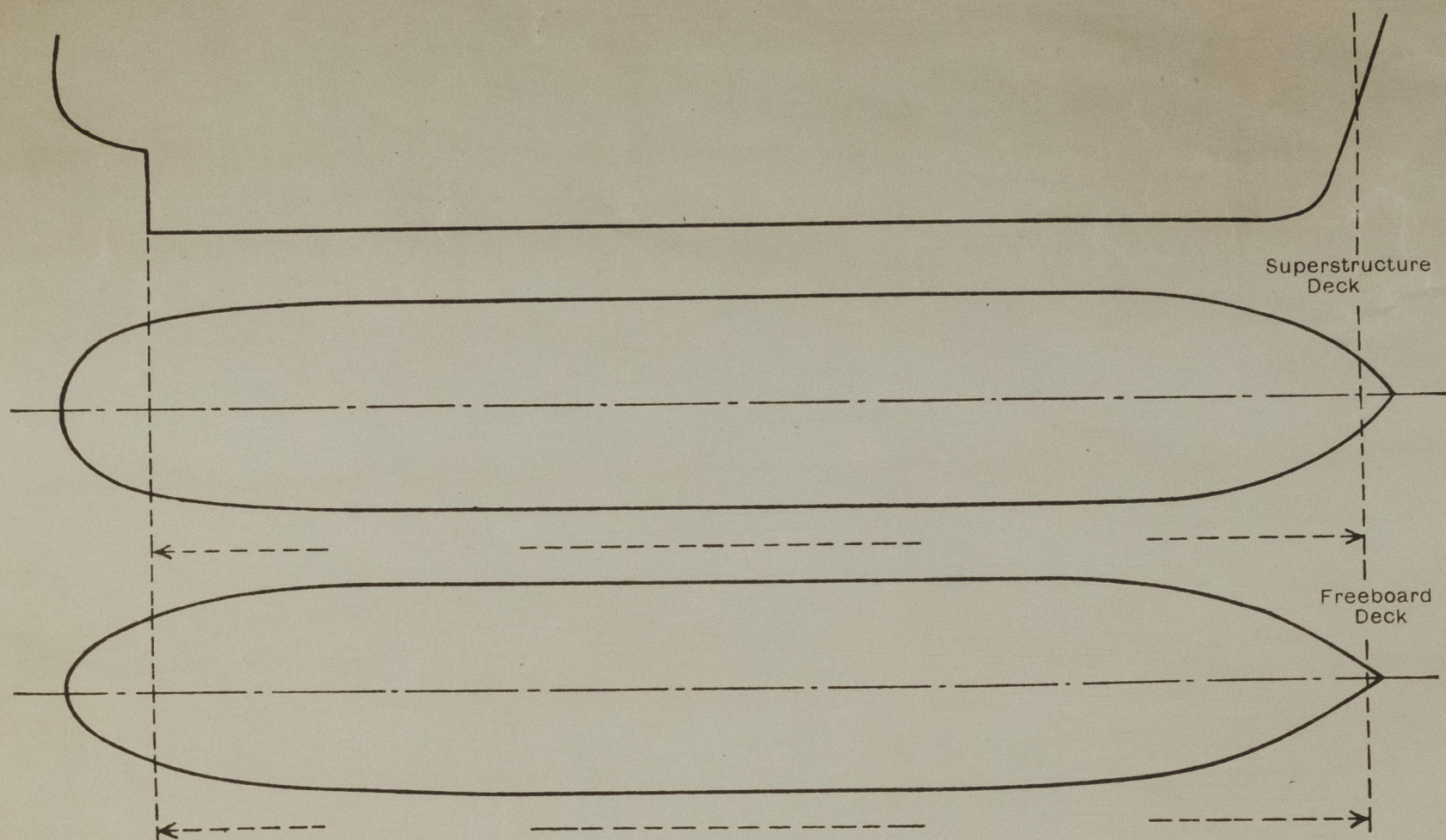
ALL DIMENSIONS GIVEN IN METRIC UNITS & GIVEN IN MILLIMETRES.								
Particulars of Superstructures, Trunks, Casings, Deckhouses.								
	Coaming	Plating	Stiffeners	Spacing	End Attachments of Stiffeners	Size of Openings	Height of Sills	Height, Beam to Beam
Poop Bulkhead	11.5	11.5	P 300 X 13 TOE WELDED.	850.	WELDED T. & B.	2 @ 1500 X 700	610	2570
Raised Quarter Deck Bulkhead ...	10.0	10.0	P 180 X 8 TOE WELDED	850	WELDED T. & B.	2 @ 1600 X 1200	460	3000
Bridge, After Bulkhead	10.5	10.5	P 280 X 13 TOE WELDED	850	WELDED T. & B.	2 @ 1500 X 700	460	3000
Bridge, Forward Bulkhead	8.0	8.0	P 130 X 10.5 WELDED	610	WLD. LUG AT TOP.	4 @ 1500 X 700	460	2879
Trunk, Aft								
Trunk, Forward								
Exposed Machinery Casings on Free- board or Raised Quarter Decks ...								
Exposed Machinery Casings on Super- structure Decks								
Machinery Casings within Superstruc- tures not fitted with Class I Closing Appliances								
FWO.	8.0	8.0	1 130 X 10.5 WLD.	610	WLD LUG @ T.	1500 X 700	610	2340
Deckhouse and Pump Room Entrances AFT.	11.5	11.5	P 300 X 13 TOE WELDED	850	WLD. T & B.	1 FWD, 2 AFT.		2910

Particulars of Closing Appliances (state if capable of being manipulated from both sides).

Popg Bulkhead	STEEL W.T. DOORS OPERATED FROM BOTH SIDES (CLASS 1.) HINGED.
Raised Quarter Deck Bulkhead ...	
Bridge, After Bulkhead	STEEL PLATES SECURED WITH HOOK BOLTS (CLASS 2.) PORTABLE, BOLTS SR. 300.
Bridge, Forward Bulkhead	STEEL W.T. DOORS OPERATED FROM BOTH SIDES (CLASS 1.) HINGED.
Forecastle Bulkhead	STEEL DOORS OPERATED FROM BOTH SIDES (CLASS 1.) HINGED.
Exposed Machinery Casings on Free-board or Raised Quarter Decks ...	
Exposed Machinery Casings on Super-structure Decks	
Machinery Casings within Superstruc-tures not fitted with Class I Closing Appliances	
Deck Pump Room Entrances	STEEL DOOR OPERATED BOTH SIDES. (CLASS 1.) HINGED.
	STEEL W.T. DOORS OPERATED BOTH SIDES. (CLASS 1.) HINGED.

PARTICULARS OF PROTECTION TO OPENINGS, ETC.

The following diagrams should be used to indicate the positions of cargo and coaling hatchways, gangway, cargo and coaling ports, side scuttles, scuppers, ventilators, companionways, etc., which would affect the seaworthiness of the ship :-



Particulars of fiddle, funnel and ventilator coamings, engine room skylight and other openings in machinery casing tops and their means of closing :-

NO FIDDLE OPENINGS FITTED.

FUNNEL, VENT. COAMINGS & ENGINE ROOM SKYLIGHT STRONGLY CONSTRUCTED OF STEEL.

FUNNEL FITTED WITH STEEL DOOR, SKYLIGHT HINGED STEEL FLAPS FITTED WITH 8

IN NO. FIXED STRONG GLASS BULLSEYES & SECURED W.T. WITH TOGGLES & PACKING.
 ON CASING TOP. ACCESS HATCH PORT SIDE 420x420x200 CH. STEEL FITTED WITH HINGED STEEL W.T. COVER WITH TOGGLES AND PACKING.
 MACH. ACCOM. VENTILATION AND AIR INTAKES ON CASING SIDES ON BOAT AND OFFER DECKS. FITTED WITH GRILLS AND HINGED STRONG
 STEEL DOORS SECURED W.T. WITH PACKING AND HINGED TOGGLES.

Particulars of Flush Bunker Scuttles :-

NONE.

Particulars of Companionways :-

(including those incorporated in deckhouses and masthouses)

AFTER PUMP ROOM:- STRONG STEEL COMPANIONWAY ON P. RM. TOP. STEEL DOOR, 1500x650 OPERATED BOTH SIDES. SILL 460. DOOR SECURED W.T. WITH CLIPS & PKG.

ALL COMPANIONWAYS TO POOP ACCOMMODATION & MACHY. CASINGS ARE IN A STRONG STEEL
 DECKHOUSE. 9 IN NO. STEEL. DOORS 1500x700 OPERATED BOTH SIDES, SILLS 460, AND 1 IN NO. DOUBLE STEEL DOOR TO PROVISION LIFT, SECURED W.T. WITH CLIPS & PKG. OPENING 1800x1800
 SILL 260. OPERATED FROM OUTSIDE ONLY AND A NOTICE DISPLAYED STATING THAT THESE DOORS ARE ONLY TO BE USED IN PORT.

Particulars of Ventilators in exposed positions on freeboard and superstructure decks :-
FO'C'SLE DECK:- 6 IN NO. 460 DIA C.V'S. COAMINGS WLD. 1230x10. ADEQUATELY STAYED. 4 IN NO. 310 DIA C.V'S
 COAMINGS WLD. 915x8.5. ALL C.V'S CLOSED WITH STEEL COVERS SECURED W.T. WITH PKG & TOGGLES.

BRIDGE DECK :- 2 P&S 500 DIA MUSHROOM V'S. COAMINGS WLD. 460x10. CLOSED BY SCREW DOWN STEEL W.T. COVERS WITH PKG

POOP DECK :- DERRICK STUMP MAST FITTED WITH HINGED STEEL FLAP.

VENTS BUILT INTO DECKHOUSE SIDES & BULKHEADS, 760, 800 & 450x150. COAMINGS 460x10 WLD.
 OPENINGS CLOSED WITH HINGED STEEL COVERS SECURED W.T. BY PACKING & TOGGLES. 5 PORT, 3 STB.

PUMP ROOM :- 1 P&S 760 DIA. MUSHROOM VENTS, WLD. COAMINGS 2000x10 SUPPORTED WITH BRACKETS
 AND CLOSED W.T. WITH SCREW DOWN STEEL COVERS & PACKING.

TOP AFT AND PROVIDED WITH HINGED STEEL FLAP.

FREE^{BD} DECK:- 1 P&S. AFT PUMP ROOM VENTS. 864 DIA WLD COLUMNS, 10 THICK SUPPORTED WITH BKTS.
 OPENING 3500 ABOVE DECK. 750 DIA X 10 THICK TRUNKING AT POOP DECK LEVEL FITTED TO P.M.P. RM.

FOR^{WD} PUMP ROOM TOP. W.T. WITH PKG. & TOGGLES.

Particulars of Air Pipes in exposed positions on freeboard, raised quarter, or superstructure decks :-

FO'C'SLE DK. :- 1 P&S, 1 CR. - 250 DIA. 1 P. - 150 DIA. AT LEAST 460 ABOVE DK TO OPENING.

FBD. DK :- 1 P&S, - 250 DIA. 1 P&S - 200 DIA. 2 P&S, 1 CR. - 150 DIA.
 DK. TO OPENING.

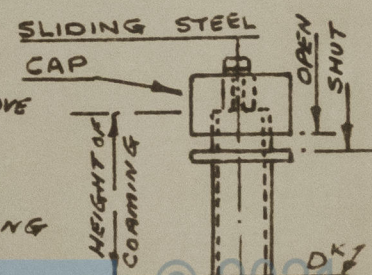
POOP. DK. :- 1 P - 150 DIA. 1 P&S - 125 DIA. 2 P, 1 S, - 100 DIA. 5 P, 2 S - 80 DIA.

APRS. - 750 1 P - 65 DIA. 5 P, 3 S, - 50 DIA. AT LEAST 460 ABOVE DK TO OPENING

BOAT DK :- 1 S. - 250 DIA. 460 ABOVE DK. TO OPENING.

CARGO TANKS HAVE COMMON VAPOUR LINE WITH AIR PIPES LED UP FOR^{WD} MAST
 AND P&S. AMIDSHIP DERRICK MASTS.

ALL AIR PIPES FITTED WITH STEEL CAPS (AS SKETCH.) AND THOSE FROM OIL TANKS OR COFF^{ERS}
 FITTED WITH GAUZE.



0062 2/4

Particulars of Gangway Cargo and Coaling Ports :—

NONE.

Particulars of Scuppers and Sanitary Discharge Pipes :—

EXPOSED FBD. DK. SCUPPERS:- 12 P&S 100 DIA X 16 THICK ELBOW PIECES DIRECT OVERBOARD DISCHARGE.
FO'C'SLE DK. SCUPPERS:- 2 P&S. 80 DIA DIRECT DISCHARGE ONTO EXPOSED FBD. DECK.

BRIDGE DK SCUPPERS:- 2 P&S 80 DIA DIRECT DISCHARGE ONTO EXPOSED FBD. DECK.
EXPOSED POOP DK SCUPPERS:- 5 P&S, 1 $\frac{1}{2}$ 80 DIA DIRECT OVERBOARD DISCHARGE.

SANITARY DISCHARGES FROM ACCOMMODATION WITHIN POOP ABAFT FRM N^o 14 HAVE OVERBOARD DISCHARGE AT FRM. N^o 10/11 P&S FITTED WITH BRASS S.D.A.N.R VALVE OPERATED ABOVE FBD. DECK & FITTED WITH OPEN/SHUT INDICATOR.

ALL SOIL PIPES FROM AFTER ACCOMM^{DTN} HAVE COMMON DISCHARGE IN E.Rm. 100 DIA BRASS S.D.A.N.R VALVE P&S
ALL SANITARY DISCHARGES FORM AFT. ACCOM^{DTN} EXCEPT ABAFT FRM N^o 14 HAVE COMMON DISCHARGE IN E.Rm 100 DIA S.D.A.N.R. VALVE (BRASS) P&S. HOSPITAL ON BOAT OK HAS SEPARATE DISCHARGE 100 DIA BRASS S.D.A.N.R VALVE IN E.Rm PORT.
SOIL & SANITARY DISCHARGES FROM AMIDSHIP ACCOMM^{DTN}. 65 DIA & 100 DIA BRASS N.R. VALVES FITTED ABOVE FBD. DK. WITH 19 THICK O/B DISCHARGE PIPES IN N^o 4 P&S BALLAST TANKS.
THERE ARE NO DISCHARGES FROM SPACES BELOW THE FREEBOARD DECK FOR SOIL OR SANITARY SERVICES.

Particulars of Side Scuttles and Deadlights :—

NO SIDE SCUTTLES FITTED BELOW FREEBOARD DECK.

POOP 'TWEEN DECKS:- 12 P&S 400 DIA OPENING TYPE.
6 P&S. 300 DIA " "

BRIDGE 'TWEEN DECKS:- 3 P&S 400 DIA " "
1 P&S 400 DIA IN FOR^{WD} BULKND OPENING TYPE.

FOR^{WD} PUMP ROOM:- 1 PORT 400 DIA IN AFT BULKND " "

ALL SIDE SCUTTLES STRONGLY CONSTRUCTED OF BRASS WITH HINGED CAST STEEL DEADLIGHTS FITTED.

Vertical distance of Sill of lowest Side Scuttle above top of keel
Distance from amidships to centre of lowest Side Scuttle

Particulars of Guard Rails and Bulwarks :—

FREEBOARD, FO'C'SLE & BRIDGE DECKS INCLUDING F&A GANGWAYS:-

STANCHIONS 1100 HIGH SPD. 1400 FITTED WITH 3 RAILS. STAYS FITTED APPROX EVERY 4TH STANCHION.

POOP DECK:- FOR^{WD} OF FRM N^o 10. BULKWARKS. PLATING 6 RAIL P160 X 7 STAYS P160 X 7 SPACED 1520
ABAFT OF FRM N^o 10. GUARD RAILS AS DETAILED ABOVE.

Particulars of Gangways, Lifelines, etc. :—

FORE & AFT GANGWAY FITTED AT LEVEL OF SUPERSTRUCTURES BETWEEN POOP & BRIDGE AND BRIDGE & FO'C'SLE, AND OF ALL WELDED CONTRUCTION.

SUPPORTS:- TUBES 219 DIA X 9.1 THICK SPD. 3050.

TRANSVR. TUBE 108 DIA X 7.1 THICK.

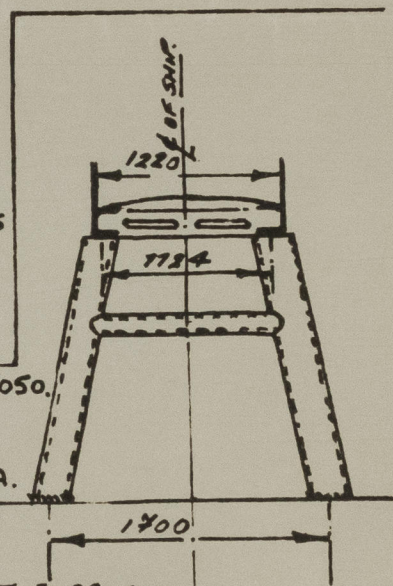
LONG^{TD} PLATE:- 420 X 10 FLANGES 130.

SINGLE DIAGONAL TUBE BRACING F&A.

FITTED EVERY 3RD & 4TH SUPPORT SPACE

P&S. 76 DIA X 6 THICK

PLATFORM:- PLATE 5 THICK. BEARERS AT SUPPORTS I 220 X 80 X 9 ELSEWHERE T 80 X 80 X 9 SPD 1000.



Particulars of Freeing Arrangements.

Length of Bulwark	Height of Bulwark	Size of Freeing Ports	Number each side	Area each side	Rule area each side
After Well	} OPEN RAILS.				
Forward Well					
State position of each freeing port	{ After Well :—				
(F. and A. position and height above deck edge)	{ Forward Well :—				
State whether the freeing ports are fitted with shutters, bars, or rails, and give particulars of such :—					
Additional area where sheer is less than standard.					



© 2021

Lloyd's Register Foundation

0062 3/14

PARTICULARS OF PROTECTION TO OPENINGS, ETC.

Description of Hatchway	FBD DECK. HATCHWAYS ON FREEBOARD AND SUPERSTRUCTURE DECKS.					FO'C'SLE DECK			POOP DECK
	(22 IN N ^o) CARGO TANKS	(1 P&S.) COFFERS FORM	(1 P&S.) DEEP TKS. AFT	(1 P.) DEEP TK. AFT	(1 P&S.) DEEP TKS. FWD.	F. PK. STORE.	DRY CARGO.	PMP RM. TOP.	ROPE STORE.
Dimensions of Hatchway	1220 DIA	650 DIA	835 DIA	650 DIA	615 DIA	900 x 900	4000 x 4297	900 x 900	580 x 580
COAMINGS	Height above Deck	760	260	260	260	230	610	610	360
	Thickness	12	12.5	12	12.5	12	10	11	10
	Stiffeners	Sides	-	-	-	-	10	10	10
	Brackets, Stays	Ends	-	-	-	-	10	10	10
HATCH BEAMS	Number	/	/	/	/	/	/	/	/
	Spacing	/	/	/	/	/	/	/	/
	Scantling and Sketch	/	/	/	/	/	/	/	/
	Bearing Surface	/	/	/	/	/	/	/	/
FORE AND AFTERS	Number	/	/	/	/	/	/	/	/
	Spacing	/	/	/	/	/	/	/	/
	Unsupported Lengths	/	/	/	/	/	/	/	/
	Scantling* and Sketch	/	/	/	/	/	/	/	/
HATCH COVERS	Material	STEEL.	STEEL.	STEEL.	STEEL.	STEEL.	STEEL.	STEEL.	STEEL.
	Thickness	12	12.5	17	12.5	17	8	8	8
	How fitted	HINGED	HINGED	BOLTED	HINGED	BOLTED	HINGED	HINGED	HINGED
	Bearing Surface	O.T. WITH NEOPRENE PKG.	W.T. WITH RUB. PKG.	O.T.	W.T. WITH RUB. PKG.	W.T.	W.T. WITH PKG.	W.T. WITH PKG.	W.T. WITH PKG.
Spacing of Cleats	8-23 DIA	5-23 DIA	-	5-23 DIA	-	8-15 DIA	26-24 DIA	8-15 DIA	2-15 DIA
Number of Tarpaulins	TOGGLES SPD 480.	TOGGLES.	-	TOGGLES.	-	TOGGLES SPD 460	TOGGLES SPD 680	TOGGLES SPD 460	TOGGLES

*Are wood fore and afters steel shod at all bearing surfaces?
Are battens and wedges efficient and in good condition?
Are tarpaulins in good condition and in accordance with rule requirements?
Are lashings provided in accordance with rule requirements?
Are wood covers fitted with galvanised end bands?

Particulars of any special features :- (Timber Deck-cargo Fittings, Skylights, Sewage Systems, Ash Ejectors, Rubbish Shoots, etc.)

TANK NO^s 5 CR & 4 WING P&S. ARE PERMANENT BALLAST TANKS. HATCHWAY COAMINGS ARE AS FOR CARGO TANKS BUT 12 THICK TOP PLATE IS RIVETED W.T. & FITTED WITH AN ACCESS MANHOLE 620 X 470 CLOSED W.T. WITH A HINGED 8 THICK COVER SECURED WITH 4 IN N^o 20 DIA TOGGLES & PKG.

BUTTERWORTH OPENINGS :- 318 DIA FITTED ON FBD DECK. 84 ON EXPOSED DECK, 6 WITHIN FO'C'SLE, 2 IN AFT. PUMP RM, 4 WITHIN BRIDGE, FITTED WITH O.T. STEEL COVERS SECURED BY 4-15 DIA TOGGLES & PACKING, ADEQUATE DECK COMPENSATION FITTED. COAMING 280x14.

SEARCHLIGHT OPENING :- IN STEM PLATING INSIDE FO'C'SLE, HINGED STEEL COVER ADEQUATELY STIFFENED, 1100 DIA, SECURED W.T. WITH RUBBER PACKING & 6 TOGGLES.

RUBBISH SHOOT.

:- FITTED P.S. FROM GALLEY IN POOP DECKHOUSE. 1 1/2 THICK M.S. TUBE FITTED WITH HINGED STEEL W.T. COVER SECURED BY TOGGLES. WEIGHTED STEEL FLAP FITTED.

AFTER PUMP ROOM SKYLIGHTS.

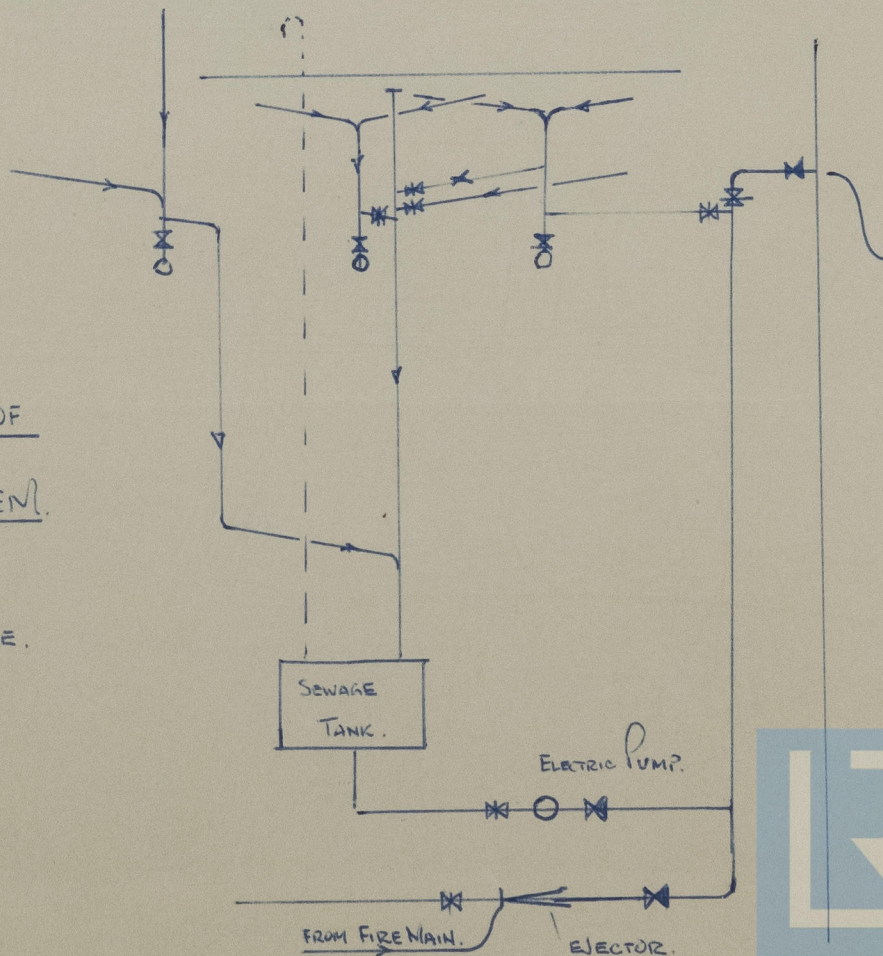
:- 2 IN N^o FITTED ON PUMP ROOM CASING TOP. STRONGLY CONSTRUCTED OF STEEL WITH HINGED STEEL W.T. FLAPS SECURED WITH TOGGLES AND FITTED WITH STRONG FIXED GLASS BULLSEYES. COAMINGS 460 HIGH.

SEWAGE SYSTEM.

:- SOIL & SANITARY SERVICES FOR AFTER ACCOMMODATION ARE PROVIDED WITH A SEPTIC TANK AND DISCHARGE SYSTEM WITH HOSE CONNECTION ABOVE EXPOSED FBD. DK. FOR DISPOSAL OF SEWAGE IN PORT.

DIAGRAMMATIC ARR^y OF
SEWAGE SYSTEM.

☒ S.D.A.N.R. VALVE.
☒ SCREEN DOWN VALVE.



© 2021

Lloyd's Register
Foundation

0062414