

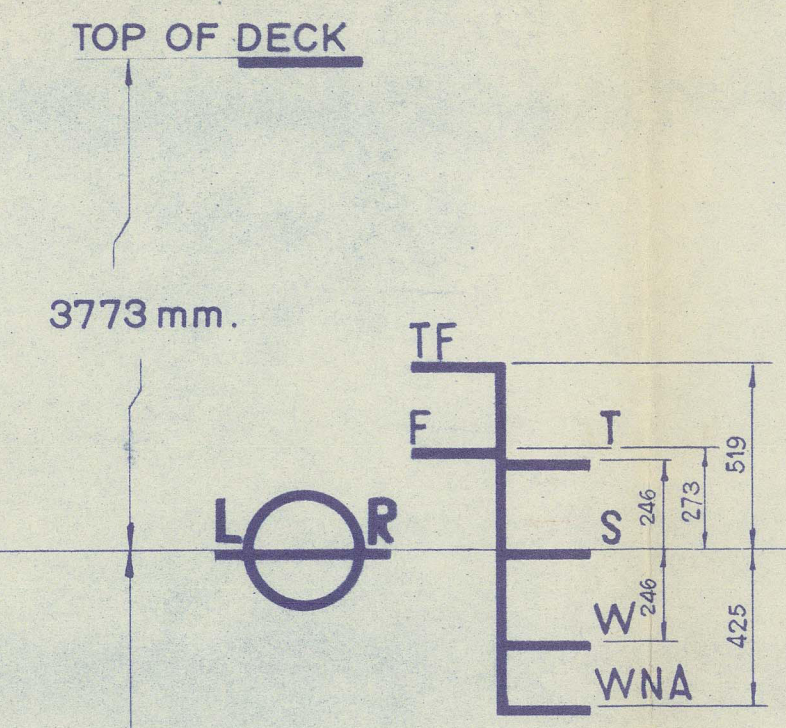
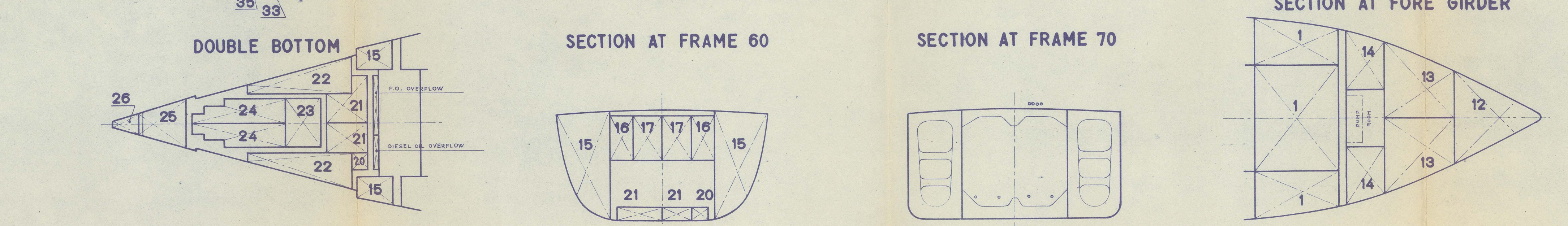
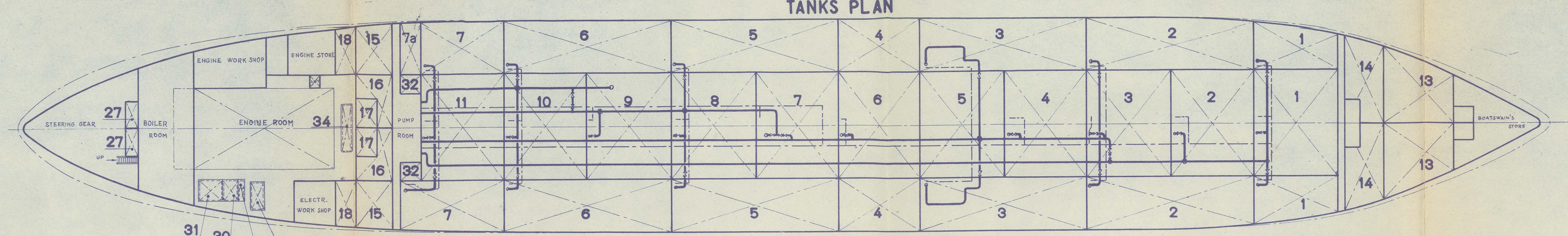
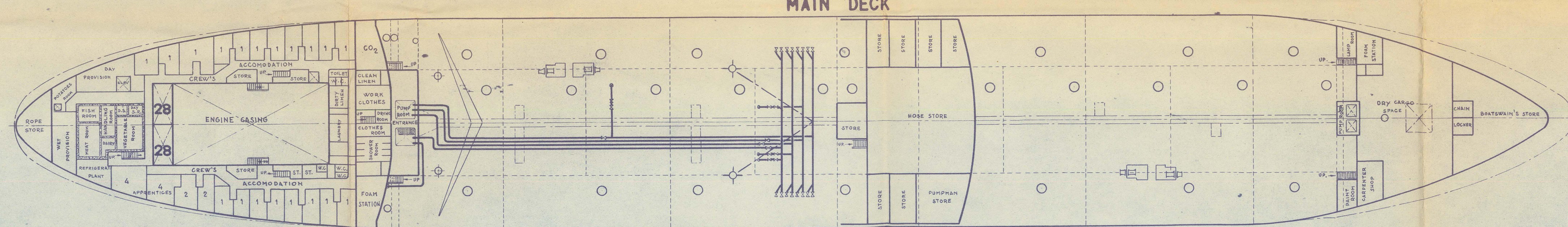
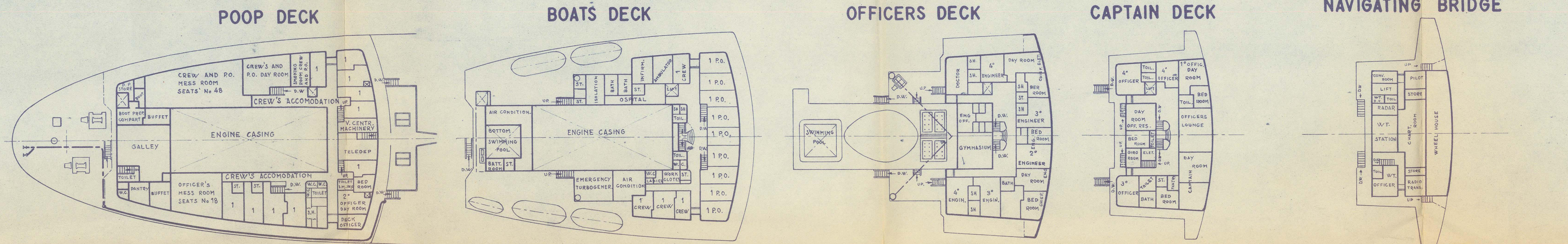
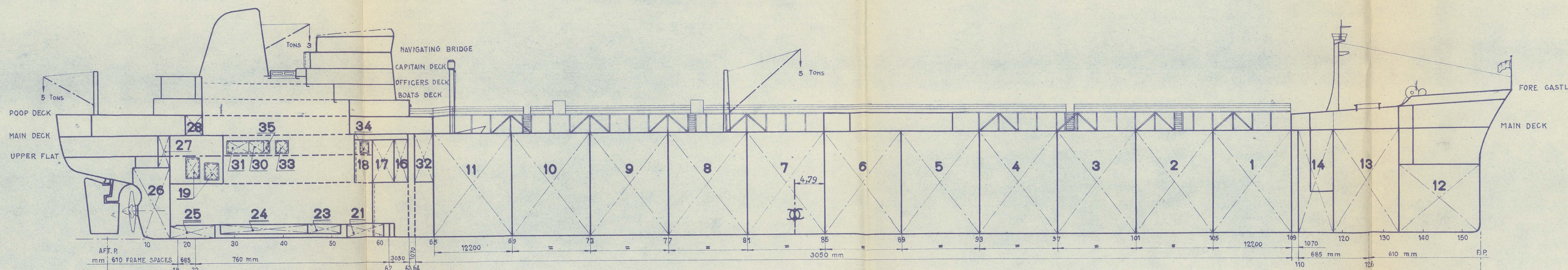
| CARGO TANKS | | | | | |
|-------------|-------------|---------------------|-----------|-----------------|-----------------|
| FRAMES | COMPARTMENT | N. 1 m ³ | W.BALLAST | CARGO 100% FULL | CARGO 100% FULL |
| 105+109 | CENTRE TANK | 2923 | | 2923 | 2983 |
| 101+105 | " | 2923 | | 2923 | 2983 |
| 97+101 | " | 2922 | | 2922 | 2983 |
| 93+97 | " | 2923 | | 2923 | 2983 |
| 89+93 | " | 2920 | 2979 | 2920 | 2980 |
| 85+89 | " | 2915 | | 2915 | 2974 |
| 81+85 | " | 2917 | | 2917 | 2977 |
| 77+81 | " | 2916 | | 2916 | 2976 |
| 73+77 | " | 2915 | | 2915 | 2974 |
| 69+73 | " | 2915 | | 2915 | 2974 |
| 65+69 | " | 2915 | | 2915 | 2974 |
| 105+109 | WING TANK | 1134 | | 1134 | 1157 |
| 105+109 | " | 1134 | | 1134 | 1157 |
| 97+105 | " | 2823 | | 2823 | 2881 |
| 97+105 | " | 2823 | | 2823 | 2881 |
| 93+97 | " | 2898 | | 2898 | 2957 |
| 89+97 | " | 2898 | | 2898 | 2957 |
| 85+89 | " | 2899 | 1479 | 2899 | 2958 |
| 81+85 | " | 2899 | 1479 | 2899 | 2958 |
| 77+81 | " | 2899 | | 2899 | 2958 |
| 73+77 | " | 2899 | | 2899 | 2958 |
| 69+73 | " | 2899 | | 2899 | 2958 |
| 65+69 | " | 2899 | | 2899 | 2958 |
| 61+65 | " | 2899 | | 2899 | 2958 |
| 57+61 | " | 2899 | | 2899 | 2958 |
| 53+57 | " | 2899 | | 2899 | 2958 |
| 49+53 | " | 2899 | | 2899 | 2958 |
| 45+49 | " | 2899 | | 2899 | 2958 |
| 41+45 | " | 2899 | | 2899 | 2958 |
| 37+41 | " | 2899 | | 2899 | 2958 |
| 33+37 | " | 2899 | | 2899 | 2958 |
| 29+33 | " | 2899 | | 2899 | 2958 |
| 25+29 | " | 2899 | | 2899 | 2958 |
| 21+25 | " | 2899 | | 2899 | 2958 |
| 17+21 | " | 2899 | | 2899 | 2958 |
| 13+17 | " | 2899 | | 2899 | 2958 |
| 9+13 | " | 2899 | | 2899 | 2958 |
| 5+9 | " | 2899 | | 2899 | 2958 |
| 1+5 | " | 2899 | | 2899 | 2958 |
| TOTAL | | 57418 | 58591 | | |

| DOUBLE BOTTOMS AND TANKS | | | | | |
|--------------------------|----------------------------|----------------|---------|-------------------|--------|
| FRAMES | COMPARTMENT | FUEL OIL | L.OIL | F.WATER/W.BALLAST | |
| 136+FORE | FORE PEAK | 13 x | 1506,00 | | 1084 |
| 118+134 | FORWARD DEEP TANK | 13 x | 1506,00 | | 1506 |
| 110+118 | " | 14 x | 800,00 | | 800 |
| 102+110 | " | 14 x | 800,00 | | 800 |
| 94+102 | WING BUNKER | 15 x | 492,00 | | 492 |
| 86+94 | " | 15 x | 492,00 | | 492 |
| 78+86 | SETTLING TANK | 16 x | 180,00 | | |
| 70+78 | " | 16 x | 180,00 | | |
| 62+70 | DAILY TANK | 17 x | 83,70 | | |
| 54+62 | " | 17 x | 83,70 | | |
| 46+54 | DIESEL OIL TANK | 18 x | 127,80 | | |
| 38+46 | " | 18 x | 127,80 | | |
| 30+38 | BOILER SERVICE TANK | 19 x | 11,50 | | |
| 22+30 | " | 19 x | 11,50 | | |
| 14+22 | DISTILL. W. DOUBLE BOTTOM | 20 x | | 11,60 | |
| 6+14 | WASHING | 21 x | | 62,80 | |
| 1+6 | " | 21 x | | 51,50 | |
| 1+6 | " | 22 x | | 82,00 | |
| 1+6 | " | 22 x | | 82,00 | |
| 1+6 | OIL DOUBLE BOTTOM | 23 x | 42,00 | | |
| 1+6 | " | 24 x | 49,40 | | |
| 1+6 | WASHING W. DOUBLE BOTTOM | 25 x | | 56,20 | |
| 1+6 | AFTER PEAK - WASHING W. | 26 x | | 204,00 | |
| 1+6 | DRINKING WATER TANK | 27 x | | 36,40 | |
| 1+6 | " | 27 x | | 35,50 | |
| 1+6 | FEED WATER TANK | 28 x | | 51,90 | |
| 1+6 | " | 28 x | | 51,90 | |
| 1+6 | GEN. SETS LUBRIF. OIL TANK | 30 x | | 19,60 | |
| 1+6 | MAIN ENG. LUB. OIL TANK | 31 x | | 24,20 | |
| 1+6 | CYLINDERS OIL TANK | 33 x | | 28,00 | |
| 1+6 | DIESEL OIL TANK FOR M.E. | 34 x | 21,60 | | |
| 1+6 | T/GEN SET OIL TANK | 35 x | | 3,20 | |
| 1+6 | LUB. OIL TANK | 36 x | | 2,15 | |
| 1+6 | FUEL OIL OVERFLOW | | 14,40 | | |
| 1+6 | DIESEL OIL OVERFLOW | | 6,40 | | |
| TOTAL | | m ³ | 6422,95 | 216,95 | 725,00 |

| PROVISION STORES AND REFRIGERATE SPACES | | | |
|---|-----------------------|----------------|-----|
| FRAMES | COMPARTMENT | VOLUME | |
| 1+2 | WET PROVISION (GRAIN) | m ³ | 104 |
| 1+2 | POTATOES ROOM | " | 45 |
| 2+18 | DRY PROVISION | " | 106 |
| 2+8 | MEAT ROOM | " | 37 |
| 2+8 | FISH ROOM | " | 14 |
| 8+11 | DAIRY ROOM | " | 11 |
| 8+11 | HANDLING ROOM | " | 25 |
| 11+14 | DRINKS STORAGE ROOM | " | 6 |
| 14+18 | DAY SERVICE ROOM | " | 8 |
| 11+18 | VEGETABLE ROOM | " | 40 |
| TOTAL | | m ³ | 396 |

| OTHER SPACES | | | |
|--------------|--------------------------|--------------------|-----|
| FRAMES | COMPARTMENT | VOLUME | |
| 64+65 | BUTTERWORTH WASHING TANK | N 7 m ³ | 307 |
| 64+65 | SLUDGE TANK | " 32 " | 56 |
| 64+65 | " | " 32 " | 56 |
| 109+110 | FORWARD COFFERDAM | " | 424 |
| 118+134 | DRY CARGO HOLD | " | 917 |
| 26+53 | ENGINE COFFERDAM | " | 200 |
| 58+62 | " | " | 40 |

MOTORTANKER "GIUSEPPE VERDI"



CLASS
 LLOYD'S REGISTER 100.A.1. OIL TANKER
 ICE CLASS 3
 LLOYD'S REGISTER L.M.C. OIL ENGINE

MAIN PARTICULARS
 LENGHT O.A. m 227,84
 LENGHT B.P. " 215,033
 BREADTH MOULDED MAX " 31,000
 BREADTH O.A. " 31,109
 DEPTH TO M.D. " 15,564
 GROSS TONNAGE T. 31133,48
 NET TONNAGE 18876,10
 SUEZ GROSS T.
 SUEZ NET T.
 PANAMA GROSS T.
 PANAMA NET T.

EMPTY SHIP T. 15113
 E.R. CIRCULATING LIQUID 128
 DECK SERV. & OUTFIT CIRC. LIQUID 59
 LIGHT SHIP T. 15300
 CREW AND EFFECTS T. 11

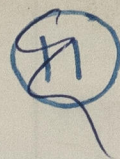
| FREEBOARD | DRAUGHT | DEADWEIGHT | DISPLACEMENT | TON PER | TON PER | MOMEN TO | DISPLACEMENT | DEADWEIGHT | DRAUGHT | FREEBOARD |
|-----------|---------|------------|--------------|---------|---------|----------|--------------|------------|---------|-----------|
| m | dm | d = 1,000 | d = 1,000 | T / cm | T / 1" | CHANGE | d = 1,025 | d = 1,025 | dm | m |
| 3,00 | 128 | XLII | | 59,5 | 151 | | 70000 | 55000 | 128 | XLII |
| | 126 | XLI | | | | | | | 126 | XLI |
| | 124 | XL | 50000 | | | | | | 124 | XL |
| | 122 | XL | | | | | | | 122 | XL |
| | 120 | XXXIX | | 59 | 150 | 850 | 65000 | 50000 | 120 | XXXIX |
| 4,00 | 118 | XXXVIII | | | | | | | 118 | XXXVIII |
| | 116 | XXXVII | 45000 | | 149 | | | | 116 | XXXVII |
| | 114 | XXXVI | | 58,5 | | | 60000 | 45000 | 114 | XXXVI |
| | 112 | XXXV | | | 148 | | | | 112 | XXXV |
| | 110 | XXXIV | 40000 | 58 | | 800 | | | 110 | XXXIV |
| 5,00 | 108 | XXXIII | | | 147 | | 55000 | 40000 | 108 | XXXIII |
| | 106 | XXXII | | 57,5 | 146 | | | | 106 | XXXII |
| | 104 | XXXI | 35000 | | | | | | 104 | XXXI |
| | 102 | XXX | | 57 | 145 | | 50000 | 35000 | 102 | XXX |
| 6,00 | 100 | XXIX | | | | | | | 100 | XXIX |
| | 98 | XXVIII | | | 144 | 750 | | | 98 | XXVIII |
| | 96 | XXVII | 30000 | | | | | | 96 | XXVII |
| | 94 | XXVI | | 56,5 | | | 45000 | 30000 | 94 | XXVI |
| | 92 | XXV | | | 143 | | | | 92 | XXV |
| 7,00 | 90 | XXIV | | | | | | | 90 | XXIV |
| | 88 | XXIII | 25000 | | 142 | | 40000 | 25000 | 88 | XXIII |
| | 86 | XXII | | 56 | | | | | 86 | XXII |
| | 84 | XXI | | | | | | | 84 | XXI |
| | 82 | XX | | | | | | | 82 | XX |
| | 80 | XIX | 20000 | | 141 | | 35000 | 20000 | 80 | XIX |
| 8,00 | 78 | XVIII | | | | | | | 78 | XVIII |
| | 76 | XVII | | | | | | | 76 | XVII |
| | 74 | XVI | | | | | | | 74 | XVI |
| | 72 | XV | | | | | | | 72 | XV |
| | 70 | XIV | | | | | | | 70 | XIV |
| 9,00 | 68 | XIII | | | | | | | 68 | XIII |
| | 66 | XII | | | | | | | 66 | XII |
| | 64 | XI | | | | | | | 64 | XI |
| | 62 | X | | | | | | | 62 | X |
| 10,00 | 60 | XLII | 15000 | | 140 | 700 | | | 60 | XLII |
| | 58 | XL | | 55,5 | | | 30000 | 15000 | 58 | XL |
| | 56 | XXXIX | | | | | | | 56 | XXXIX |
| | 54 | XXXVIII | | | | | | | 54 | XXXVIII |
| | 52 | XXXVII | | | | | | | 52 | XXXVII |
| | 50 | XXXVI | | | | | | | 50 | XXXVI |
| 11,00 | 48 | XXXV | | | | | | | 48 | XXXV |
| | 46 | XXXIV | | | | | | | 46 | XXXIV |
| | 44 | XXXIII | | | | | | | 44 | XXXIII |
| | 42 | XXXII | | | | | | | 42 | XXXII |
| | 40 | XXXI | | | | | | | 40 | XXXI |
| 12,00 | 38 | XXX | | | | | | | 38 | XXX |
| | 36 | XXIX | | | | | | | 36 | XXIX |
| | 34 | XXVIII | | | | | | | 34 | XXVIII |
| | 32 | XXVII | | | | | | | 32 | XXVII |
| | 30 | XXVI | | | | | | | 30 | XXVI |

| FREEBOARD | TF | F | T | S | W | WNA |
|-----------|--------|--------|--------|--------|--------|-----|
| 3,254 | 3,500 | 3,527 | 3,773 | 4,019 | 4,198 | |
| 12,343 | 12,097 | 12,070 | 11,824 | 11,578 | 11,399 | |
| 50370 | 48920 | 50370 | 48920 | 47475 | 46420 | |
| 65670 | 64220 | 65670 | 64220 | 62775 | 61720 | |

| CAPACITY PLAN | | | |
|---------------|--------------------------|--------------------|-----|
| FRAMES | COMPARTMENT | VOLUME | |
| 64+65 | BUTTERWORTH WASHING TANK | N 7 m ³ | 307 |
| 64+65 | SLUDGE TANK | " 32 " | 56 |
| 64+65 | " | " 32 " | 56 |
| 109+110 | FORWARD COFFERDAM | " | 424 |
| 118+134 | DRY CARGO HOLD | " | 917 |
| 26+53 | ENGINE COFFERDAM | " | 200 |
| 58+62 | " | " | 40 |

012113-012114-0021

GENOA. F.E. REP. N° 29569 !



ANSALDO S.P.A. GENOA-SESTRI.

MAR N° 1597.

' GIUSEPPE VERDI ' ★

CAPACITY PLAN.

RECORDS DEPT.
LONDON.



© 2021

Lloyd's Register
Foundation

012113- 012116 - 0027