

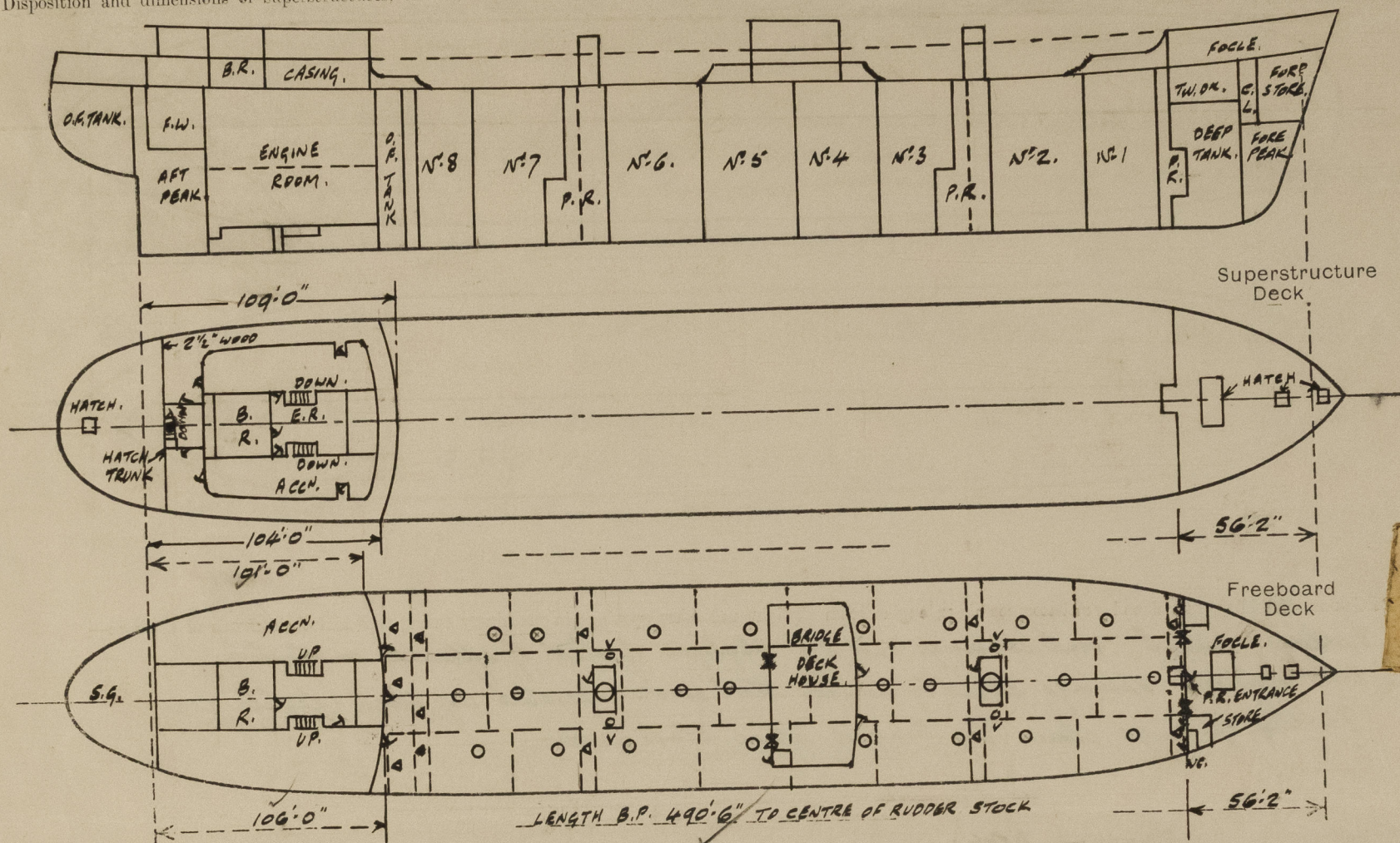
Lloyd's Register of Shipping.

SURVEYS FOR FREEBOARD.

(CONDITIONS OF ASSIGNMENT.)

Ship's Name MARICOPA "ANITSA" Port of Survey SUNDERLAND.
 Official Number GREEK, PIRAEUS Surveyor's Signature J.S. Milne.
 Nationality and Port of Registry NORWEGIAN, TONSBERG. Date of Survey While building.

Disposition and dimensions of superstructures, trunks, deckhouses and machinery casings to be inserted in the diagrams and tabular statement:—



Particulars of Superstructures, Trunks, Casings, Deckhouses.

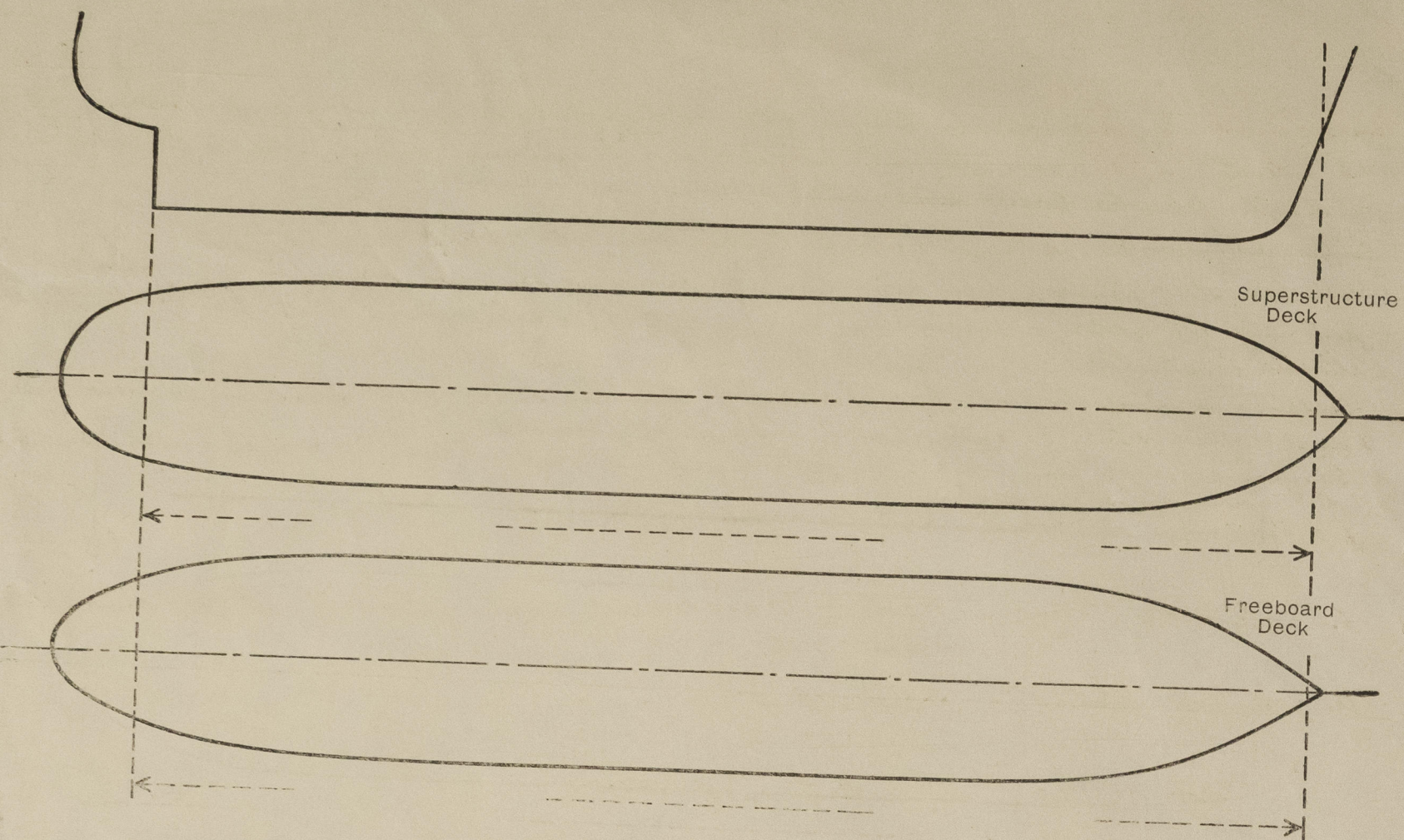
	Coaming	Plating	Stiffeners	Spacing	End Attachments of Stiffeners	Size of Openings	Height of Sills	Height of Casings
Poop Bulkhead	45	45	11" x 42" 4" FL.	2' 8"	Welded	4' 6" x 3' 0" 5' 0" x 2' 3"	18"	7' 9"
Raised Quarter Deck Bulkhead ...	✓							
Bridge, After Bulkhead	✓							
Bridge, Forward Bulkhead	✓							
Forecastle Bulkhead	32 x 33	33 x 32	3 x 2 1/2" x 25 TWA	2' 10" x 3' 0"	Welded	4' 7" x 3' 1" 5' 0" x 2' 0" 4' 6" x 2' 2"	18" 20" 24" (P.R. ENTRANCE)	7' 7"
Trunk, Aft	✓							
Trunk, Forward	✓							
Exposed Machinery Casings on Freeboard or Raised Quarter Decks ...	✓							
Exposed Machinery Casings on Superstructure Decks	✓							
Machinery Casings within Superstructures not fitted with Class I Closing Appliances	✓							
BRIDGE	30	30	5 1/4" x 2 1/2" x 25 TWA	2' 6"	LUGS.	4' 10" x 2' 0"	18"	
AFT BHD.			10" x 30" 2" FL WBS	10' 0"	BKTS.	4' 1" x 3' 1"		7' 6"
Deckhouses on Flush Deck Ships	44	44	14" x 36" 6" FL	2' 6"	BKTS.	5' 0" x 2' 3"	18"	
FOR BHD.			12" x 36" 4" FL WBS	11' 4" x 8' 6"	BKTS.			

Particulars of Closing Appliances (state if capable of being manipulated from both sides).

Poop Bulkhead	Hinged steel weathertight doors capable of being manipulated from both sides.
Raised Quarter Deck Bulkhead ...	✓
Bridge, After Bulkhead	✓
Bridge, Forward Bulkhead	✓
Forecastle Bulkhead	✓
Exposed Machinery Casings on Freeboard or Raised Quarter Decks ...	✓
Exposed Machinery Casings on Superstructure Decks	✓
Machinery Casings within Superstructures not fitted with Class I Closing Appliances	✓
BRIDGE	✓
AFT BHD.	✓
Deckhouses on Flush Deck Ships	✓
FOR BHD.	✓

PARTICULARS OF PROTECTION TO OPENINGS, ETC.

The following diagrams should be used to indicate the positions of cargo and coaling hatchways, gangway, cargo and coaling ports, ventilators, companionways, etc., which would affect the seaworthiness of the ship:—



Particulars of fidley, funnel and ventilator coverings, engine room skylight and other openings in machinery casing tops and their means of closing:

Fiddley openings, funnel, vent coverings and E.R. skylight of steel of efficient construction. ✓
E.R. skylight openings closed by hinged steel covers operated by block & tackle gear.
Fiddley openings closed by hinged steel plate covers.

Particulars of Flush Bunker Scuttles:— *None.*

Particulars of Companionways: — Entrance to auxy. P.R. from companionway on upper deck constructed of 3/2 plating, opening 4'6" x 2'2" sill 4", closed by hinged steel door (weather-tight) capable of being manipulated from both sides. Entrance to main P.R.s from deckhouse on upper deck constructed of 3/8 plating, stiffeners 5 x 3 x 3/4 TWA spaced 32" ends opening 4'6" x 2'3" sill 4" 9", closed by hinged steel weather-tight doors capable of being manipulated from both sides. Entrance to poop space from within deckhouse on poop deck, deckhouse side plating, 30" stiffeners 5 x 26 flats spaced 40", opening 5'0" x 2'3", sill 1 1/2" closed by hinged wood door 8" thick, capable of being manipulated from both sides. SEE ALSO PAGE 4.

Particulars of Ventilators in exposed positions on freeboard and superstructure decks :—

On foole deck:-

1-5	"	G.N.V. coaming	3'-0"	efficient construction.
2-6	"	C.V's	"	
1-8	"	"	3'-0" x 30"	
2-10	"	"	3'-0" x 30"	
2-15	"	"	3'-0" x 32"	

On upper deck:-

1-10	"	"	3'-0" x 36"	efficiently closed by G.T. flap - w.t. plate cover supported.
2-24	"	to arch P.R. coaming	11'-0" x 32"	
2-24	"	" main P.R.	29'-6" x 68'-34"	
2-24	"	"	29'-0" x 68'-34"	

On poop deck:-

3-6	"	"	coaming 2'-0" x 30"	closed by G.T. flap.
2-2	"	"	"	

C.V.s on poop + fore decks closed by 10-5. G.N.V. coaming 2:6. Efficiently stayed.

G.N.V's - C.V's closed by wood plugs - canvas covers except as stated otherwise.

Particulars of Air Pipes in exposed positions on freeboard, raised quarter, or superstructure decks:—

On fore deck:-

1- 6" dia air pipe to fore peak tank	36" above fore deck.
2- 5" " " " "	25 " "
3- 5" " " " "	25 " "
4- 5" " " " "	25 " "
5- 5" " " " "	25 " "
6- 5" " " " "	25 " "
7- 5" " " " "	25 " "
8- 5" " " " "	25 " "
9- 5" " " " "	25 " "
10- 5" " " " "	25 " "
11- 5" " " " "	25 " "
12- 5" " " " "	25 " "
13- 5" " " " "	25 " "
14- 5" " " " "	25 " "
15- 5" " " " "	25 " "
16- 5" " " " "	25 " "
17- 5" " " " "	25 " "
18- 5" " " " "	25 " "
19- 5" " " " "	25 " "
20- 5" " " " "	25 " "
21- 5" " " " "	25 " "
22- 5" " " " "	25 " "
23- 5" " " " "	25 " "
24- 5" " " " "	25 " "
25- 5" " " " "	25 " "
26- 5" " " " "	25 " "
27- 5" " " " "	25 " "
28- 5" " " " "	25 " "
29- 5" " " " "	25 " "
30- 5" " " " "	25 " "
31- 5" " " " "	25 " "
32- 5" " " " "	25 " "
33- 5" " " " "	25 " "
34- 5" " " " "	25 " "
35- 5" " " " "	25 " "
36- 5" " " " "	25 " "
37- 5" " " " "	25 " "
38- 5" " " " "	25 " "
39- 5" " " " "	25 " "
40- 5" " " " "	25 " "
41- 5" " " " "	25 " "
42- 5" " " " "	25 " "
43- 5" " " " "	25 " "
44- 5" " " " "	25 " "
45- 5" " " " "	25 " "
46- 5" " " " "	25 " "
47- 5" " " " "	25 " "
48- 5" " " " "	25 " "
49- 5" " " " "	25 " "
50- 5" " " " "	25 " "
51- 5" " " " "	25 " "
52- 5" " " " "	25 " "
53- 5" " " " "	25 " "
54- 5" " " " "	25 " "
55- 5" " " " "	25 " "
56- 5" " " " "	25 " "
57- 5" " " " "	25 " "
58- 5" " " " "	25 " "
59- 5" " " " "	25 " "
60- 5" " " " "	25 " "
61- 5" " " " "	25 " "
62- 5" " " " "	25 " "
63- 5" " " " "	25 " "
64- 5" " " " "	25 " "
65- 5" " " " "	25 " "
66- 5" " " " "	25 " "
67- 5" " " " "	25 " "
68- 5" " " " "	25 " "
69- 5" " " " "	25 " "
70- 5" " " " "	25 " "
71- 5" " " " "	25 " "
72- 5" " " " "	25 " "
73- 5" " " " "	25 " "
74- 5" " " " "	25 " "
75- 5" " " " "	25 " "
76- 5" " " " "	25 " "
77- 5" " " " "	25 " "
78- 5" " " " "	25 " "
79- 5" " " " "	25 " "
80- 5" " " " "	25 " "
81- 5" " " " "	25 " "
82- 5" " " " "	25 " "
83- 5" " " " "	25 " "
84- 5" " " " "	25 " "
85- 5" " " " "	25 " "
86- 5" " " " "	25 " "
87- 5" " " " "	25 " "
88- 5" " " " "	25 " "
89- 5" " " " "	25 " "
90- 5" " " " "	25 " "
91- 5" " " " "	25 " "
92- 5" " " " "	25 " "
93- 5" " " " "	25 " "
94- 5" " " " "	25 " "
95- 5" " " " "	25 " "
96- 5" " " " "	25 " "
97- 5" " " " "	25 " "
98- 5" " " " "	25 " "
99- 5" " " " "	25 " "
100- 5" " " " "	25 " "

On upper deck: 2-4" " " " " " " " " " " " "

fond coffordam 36" above upper deck.

3-5" " " off. " 36" above upper dottle.

2-5	"	"	"	Cross bunkers	56'	"	"
2-4	"	"	"	O.B. O.F. TANK	6'-0"	"	"

On board ship

On prop deck: 2-4- " " " D.B. O.F. TANK. 6-9. ✓ " } Office
D.B. O.F. tank 6-9. ✓ " } suff

2-4 - - - - - D.B. O.F. tank 36' above pool deck.

2-4 " " " " " "
2-3 " " " " " "
2-2 " " " " " "

offendant
36

above proof date.

2.5	"	"	"	"	Remain	36	✓	"	"
2.2	"	"	"	"	Feed tank	36	✓	"	"
2.3	"	"	"	"	F. W. tank	36	✓	"	"

2-2	"	"	F.W. tank	36	"	"
2-3	"	"	"	36	"	"
2-4	"	"	"	36	"	"

2-4" " " " " 36" " " "
3-4" " " " " " 36" " " "

3-4 " " " " off. Kate W.B. tank 36 " " "

" " " " D.F. " 36 " " "

Particulars of Gangway Cargo and Coaling Ports:— *None.*

Particulars of Scuppers and Sanitary Discharge Pipes :—

C. B. automatic N.R. valve above upper deck. Below upper deck this discharge consists of 12" dia x 5/8" tube welded to deck and hopper fabricated from 5/8" steel plates.

Sewer from sump deck discharging overboard at pump room wing - prop. front - N.E. pipes
Sewer - sanitary discharge pipe to 15" dia. tank

Scupper - sanitary discharge pipes from within poop discharging overboard below upper deck - fitted with c. b. automatic N.R. valves on ship's side. Deck scuppers fitted with screwed plug at inboard end, permanent attached to structure.

Sanitary discharge pipe from within deckhouse on poop deck discharging overboard below upper deck & fitted with C.B. automatic N.R. valve on ship's side.

Sanitary discharge pipe from W.C. in fore discharging overboard below upper deck, fitted with C.B. automatic N.R. valve on ship's side. No discharges overboard from spaces below upper deck.

Particulars of Side Scuttles :—

In fork side plating:- P. Side 2-10" dia C.B. side scuttles fitted with cast brass deadweights.
S. Side 3-10 " " " " " " " " " "

On poop side plating:-

side scuttles of substantial construction.

Vertical distance of Sill of lowest Side Scuttle above top of keel..... *All above upper deck.*

Particulars of Guard Rails :-

On four deck :- Open rails + stanchions 3' 6" high 3 rails, top 1 1/4 tube, lower 2 rails 3/4 rod.

On upper deck :- { 3' 6" top rail 5 x 3 x 30 B.P., 2 lower rails 1 1/4 rod.

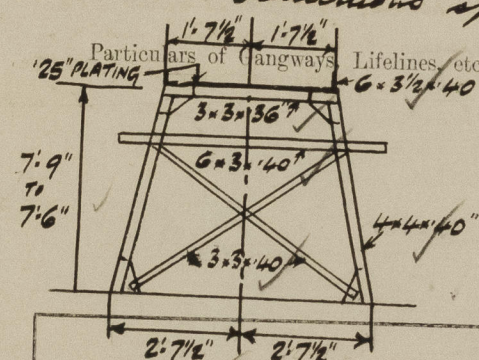
On bridge deck :- { Steel bulwarks 3' 6" high efficiently constructed + stayed.

On poop deck :- { Open rails + stanchions 3' 6" high 3 rails, top 1 1/4 tube, 2 lower rails 3/4 rod.

On poop deck :- { 3' 6" 3 " 1 1/4 " 2 " 3/4 "

Stanchions spaced about 4' 6" apart throughout.

Position 1' 7 1/4" 1' 7 1/4"



Fore and aft gangway from foale to bridge deckhouse and bridge deckhouse to poop. 7'-9" to 7'-6" high above upper deck. Supports spaced 9'-6" to 10'-0". Fore and aft bracing 7' off aft. 6' off fore. Side of gangway 25 chequered plating. Rails 3'-6" high 2 rails. stanchions spaced about 5'-0" apart.

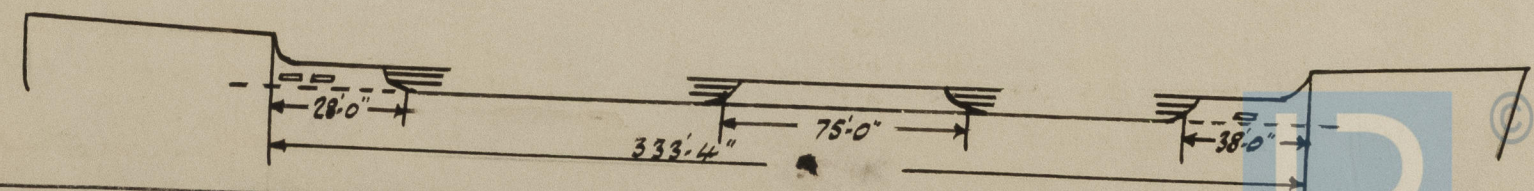
Particulars of Freeing Arrangements.

Particulars of Freeing Arrangements.						
	Length of Bulwark	Height of Bulwark	Size of Freeing Ports	Number each side	Area each side	Rule area each side
After Well	28'-0"	3'-6"	3'-0" x 9"	2	4'-5.	OPEN RAILS.
MIDSHIPS.	75'-0"	3'-6"	✓	None		
Forward Well	38'-0"	3'-6"	6'-6" x 9"	1	4-87.	

State position of each freeing port
(F. and A. position and height above deck edge) { After Well:— From poth h'd 2'6" • 8'0" 12" deck to lower edge of W.P.
Forward Well:— From fore h'd 12'8" 7" deck to lower edge of W.P.

State whether the freeing ports are fitted with shutters, bars, or rails, and give particulars of such :—

Additional area where sheer is less than standard.



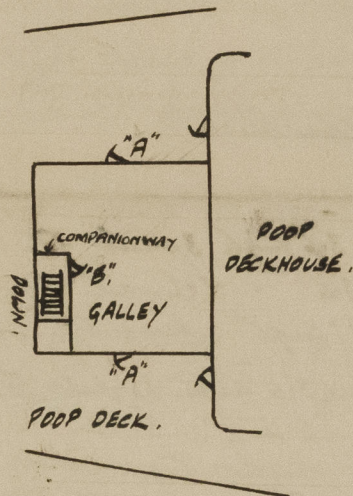
PARTICULARS OF PROTECTION TO OPENINGS, ETC.

HATCHWAYS ON FREEBOARD AND SUPERSTRUCTURE DECKS.											
UPPER DECK.											
FOCLE DECK.											
POOP DECK.											
Description of Hatchway
Dimensions of Hatchway
COAMINGS	Height above Deck
	Thickness
	Sides
	Ends
	Stiffeners
HATCH BEAMS	Number
	Spacing
	Scantling and Sketch
	Bearing Surface

FORE AND AFTERS	Number
	Spacing
	Unsupported Lengths
	Scantling* and Sketch
	Bearing Surface
HATCH COVERS	Material
	Thickness
	How fitted
	Bearing Surface

Spacing of Cleats
Number of Tarpaulins
<p>*Are wood fore and afters steel shod at all bearing surfaces? <input checked="" type="checkbox"/></p> <p>Are battens and wedges efficient and in good condition? <input checked="" type="checkbox"/></p> <p>Are tarpaulins in good condition and in accordance with rule requirements? <input checked="" type="checkbox"/></p> <p>Are lashings provided in accordance with rule requirements? <input checked="" type="checkbox"/></p>											

Particulars of any special features:—



COMPANIONWAYS.

Entrance to poop space from companionway within galley deckhouse on poop deck.

Openings "A" in galley deckhouse 5'-6" x 2'-10", sill 15" above wood deck, & closed by hinged steel doors capable of being manipulated from both sides.

Companionway of steel of efficient construction.

Opening "B" 6'-0" x 2'-0", sill 3" above galley floor & closed by wood door 1" thick, capable of being operated from both sides.



© 2021
Lloyd's Register
Foundation