

28/1/18

# NO. 185-G-7. STERN FRAME & RUDDER.

SCALE 1"=1FT. DETAILS 3"=1FT.

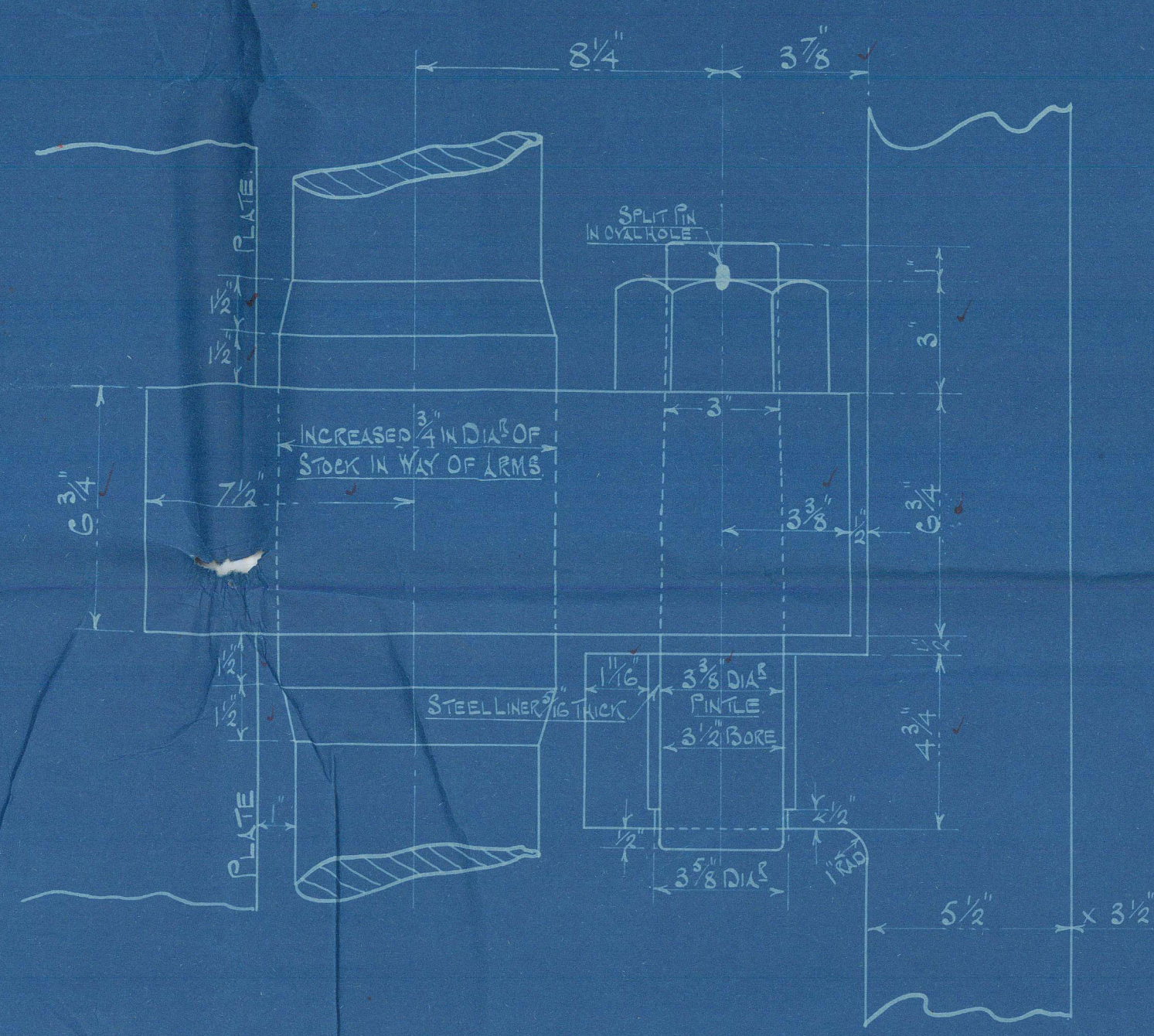
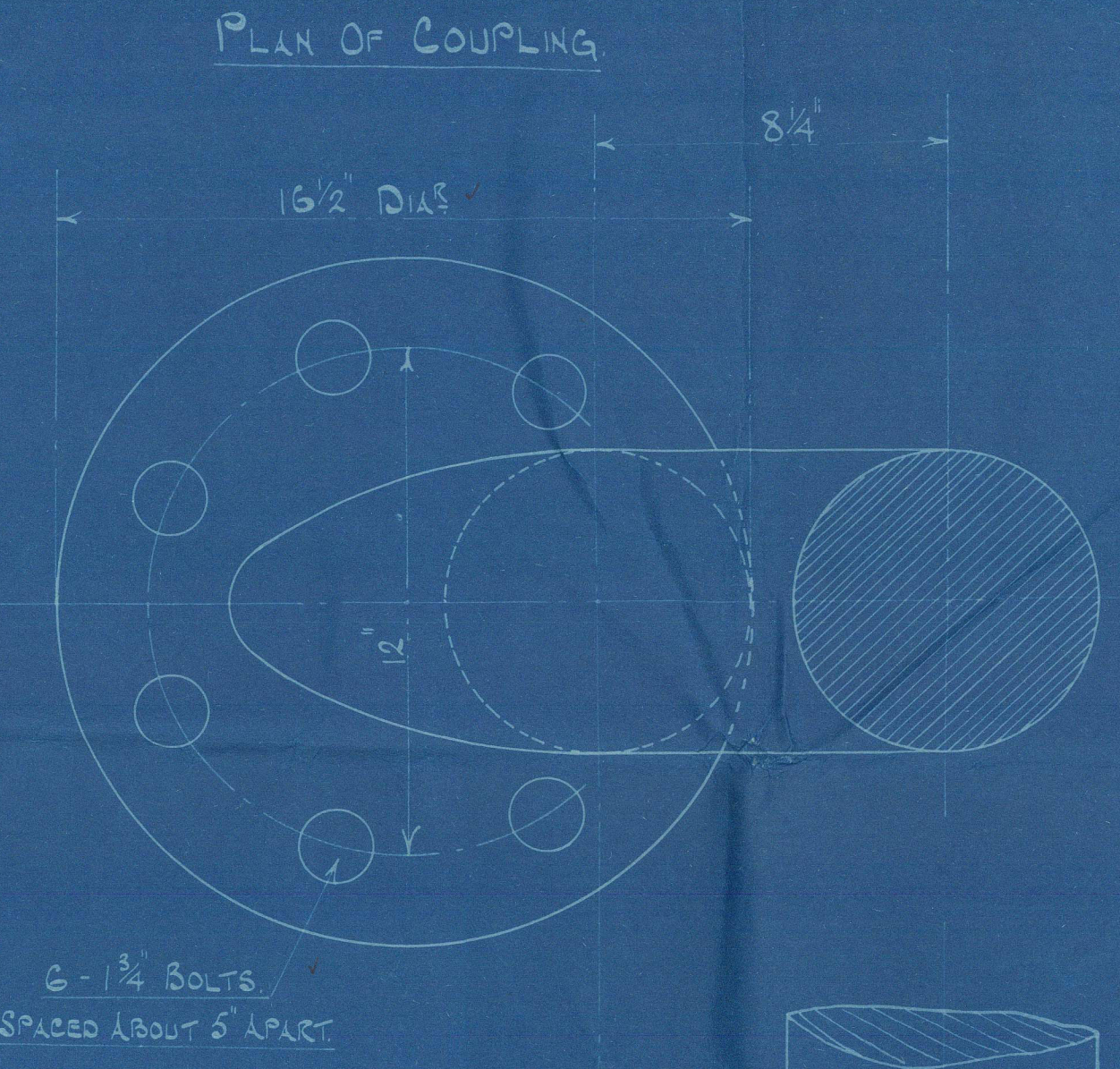
STERNFRAME, RUDDER STOCK AND RUDDER ARMS TO BE OF BEST FORGED IRON.  
RUDDER ARMS SHOULD BE KEVELED ON TO STOCK.  
SPEED OF VESSEL 11 1/2 KNOTS.

## DIMENSIONS.

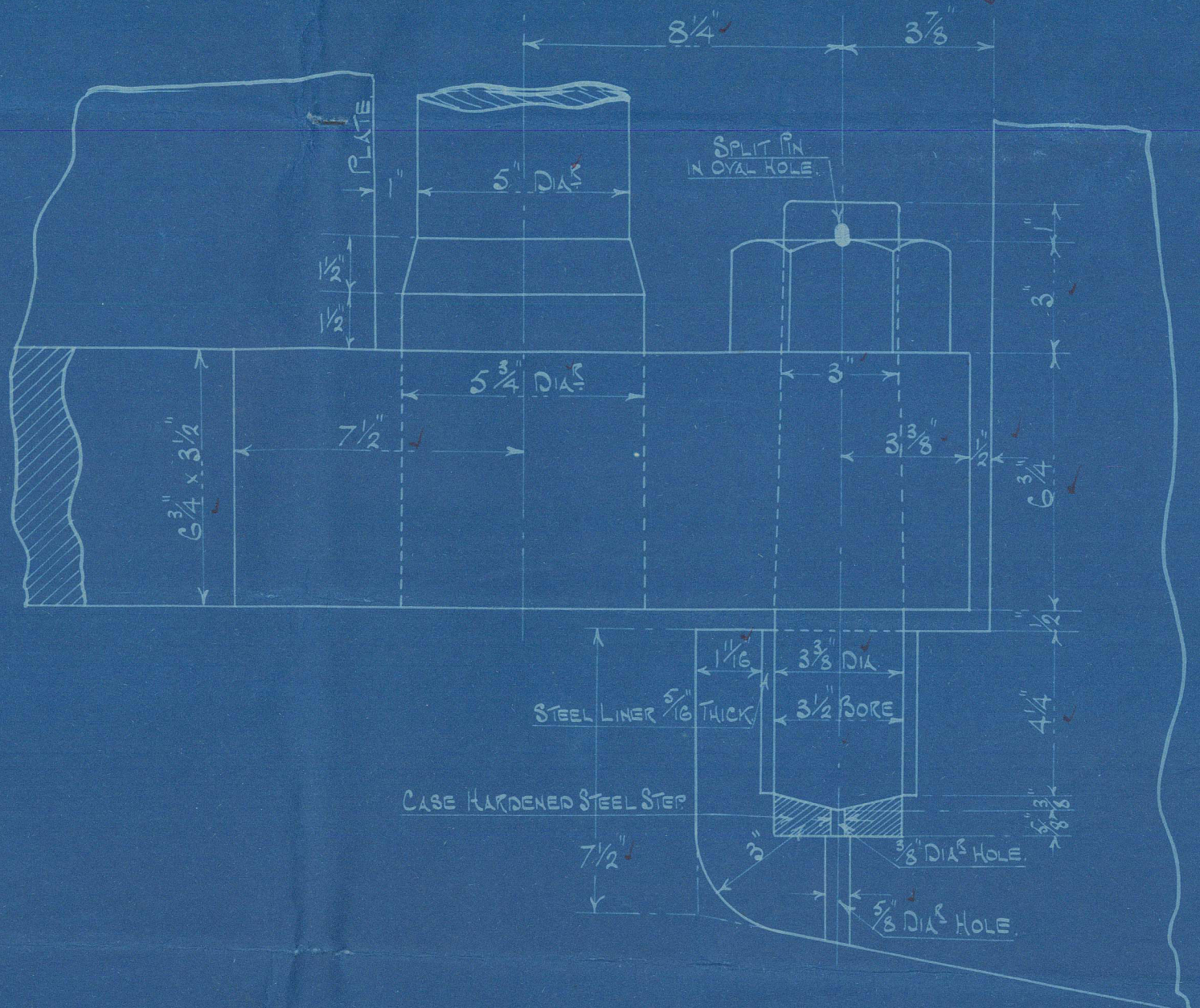
LENGTH B.P. - 135'-0"  
BREADTH M.L. - 29'-0"  
DEPTH M.L. - 16'-0"



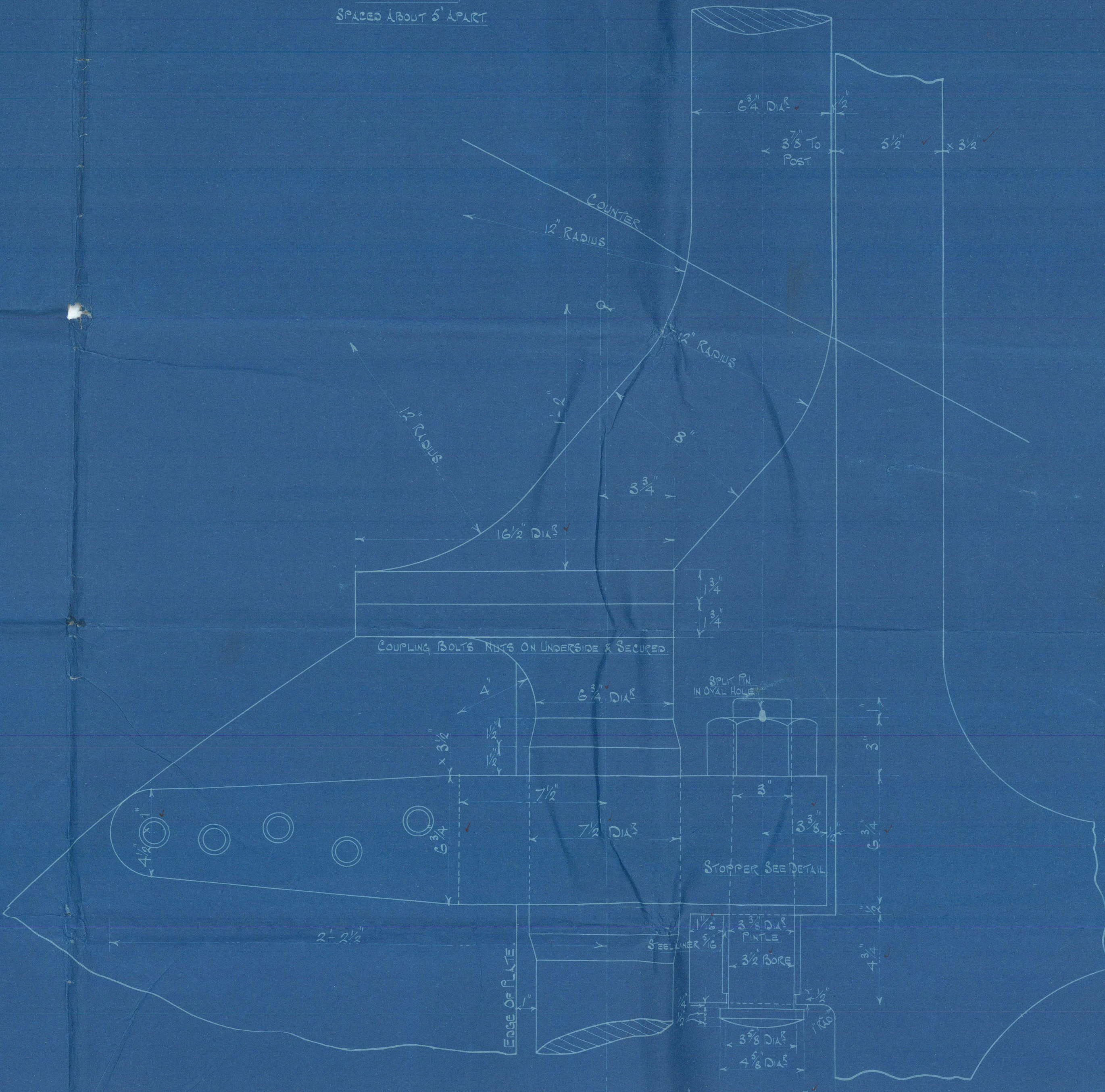
Area of Rudder Below Load Water Line Between Centre Line of Pintles  
and Back Edge of Rudder = 56.127 Square Feet.  
Distance of Centre of Gravity Aft of Line of Pintles = 2.29 FT.  
Diameter of Rudder Stock to Classification Requirements 6 1/2".  
To Classify - LLOYD'S A.I. TOWING PURPOSES.



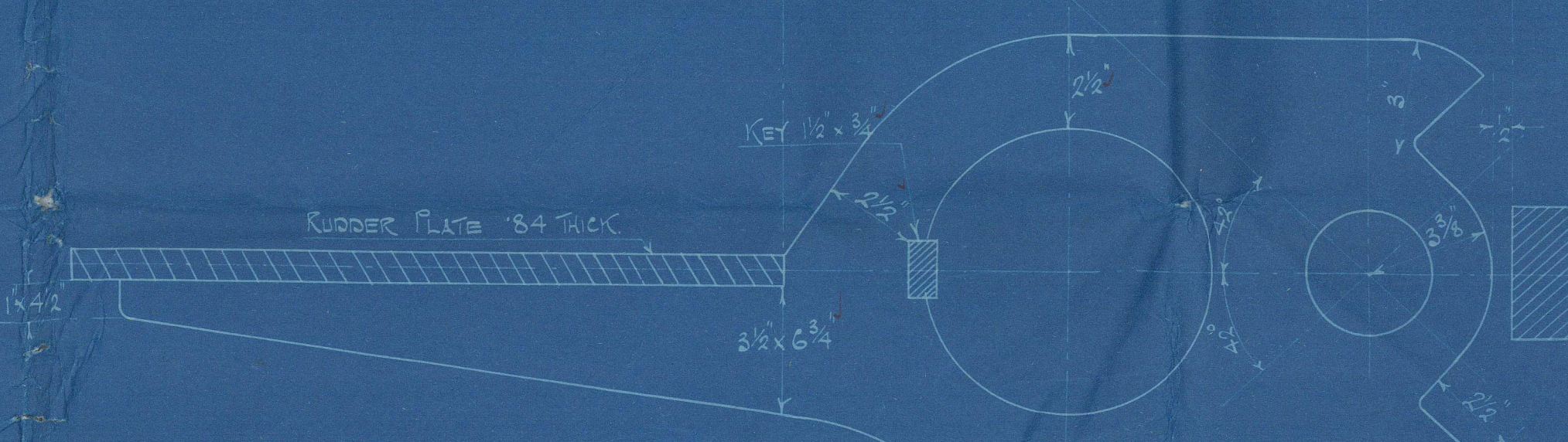
DETAIL OF INTERMEDIATE PINTLES & GUDGEONS.



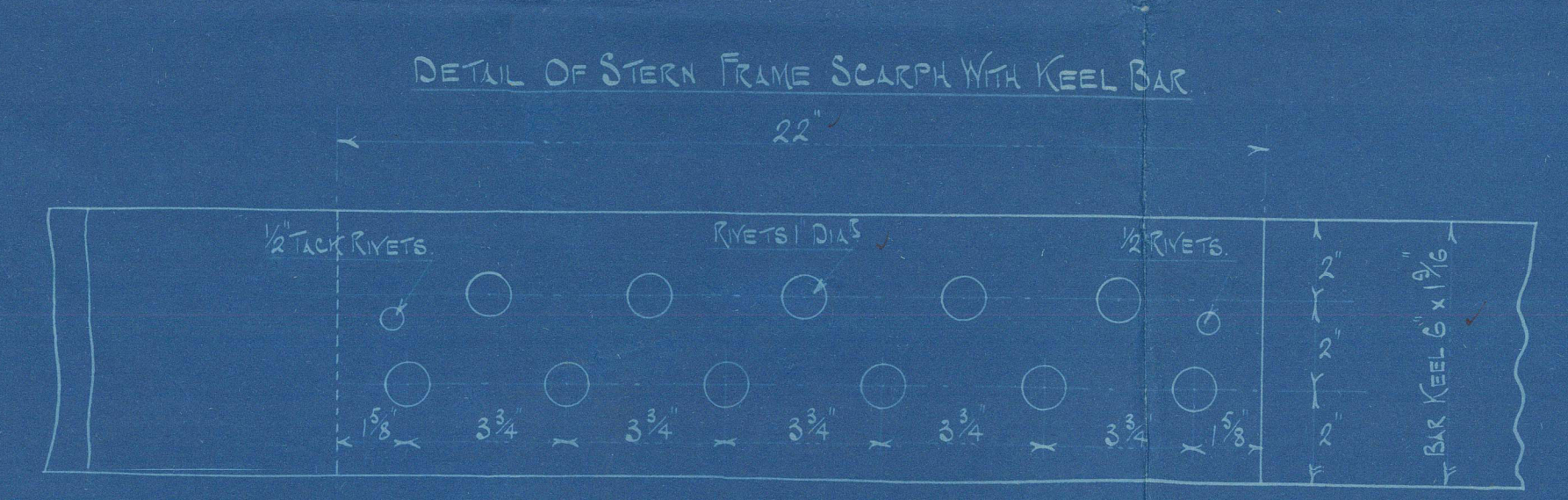
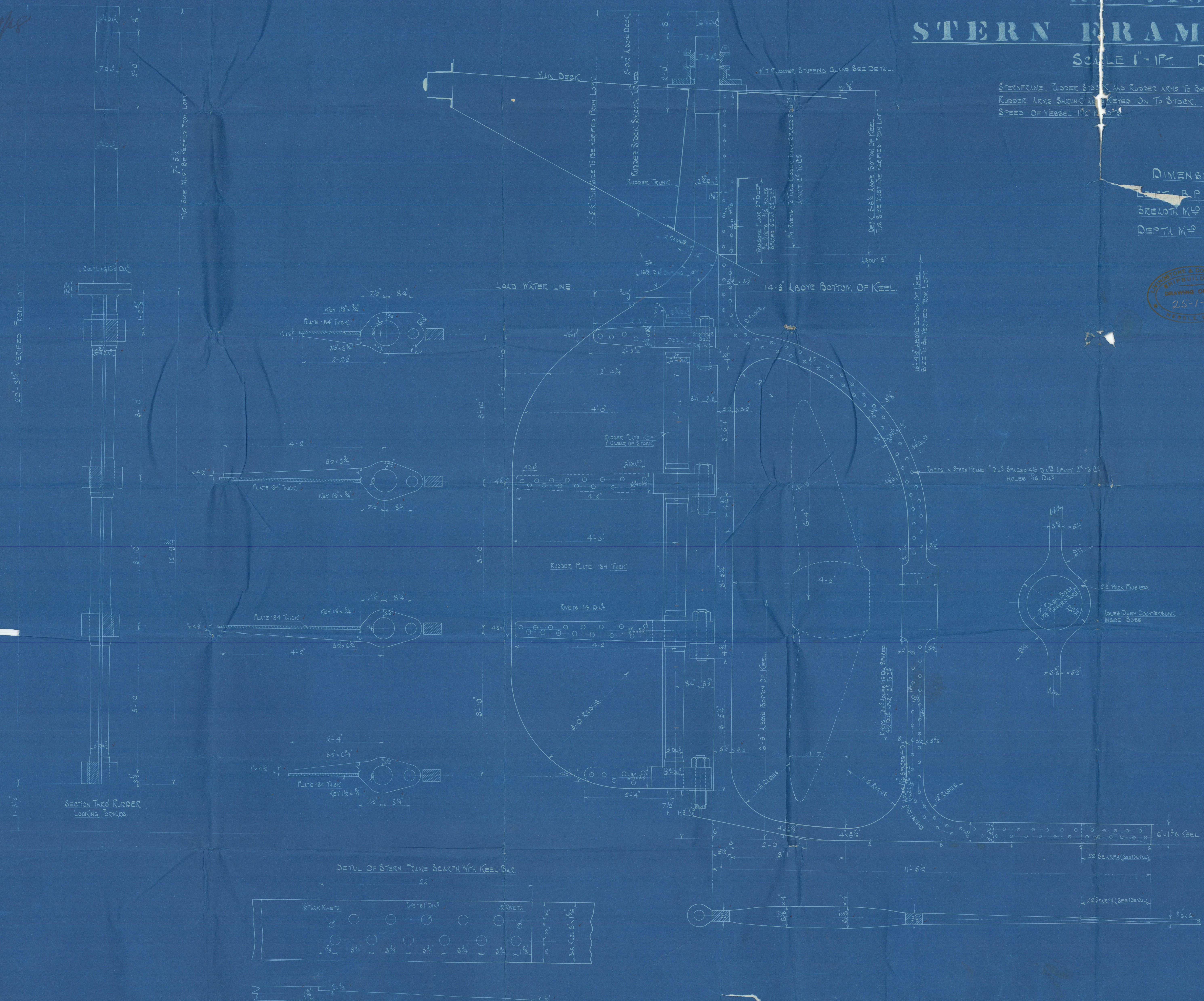
DETAIL OF BOTTOM PINTLE & GUDGEON.



ELEVATION OF TOP GUDGEON & PINTLE ALSO COUPLING.



PLAN OF TOP GUDGEON.



DETAIL OF STERN FRAME SCARPA WITH KEEL BAR.

SECTION THRU RUDDER  
LOOKING FORWARD.



*Longitarsus & Cooper &  
Hutch. Hull.*

KUMAKI

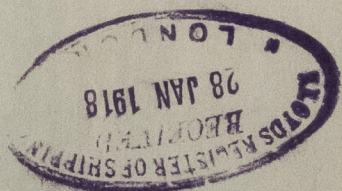
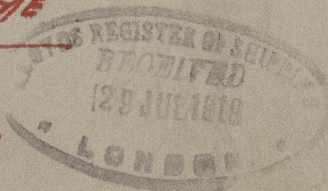
*Sup. No 180: 6 & 7, 8, 9 + 190*

*(Recent type) "VERNICE"  
NICO 1/10"*

STERN FRAME

&

RUDDER



St. Botolph - Hull Report No 30999

St. Catharine

St. Clears

31242

St. Blaude's & St. Mary 1st report 31/01  
" " " " 1st entry 31/01

012108-012112-0067



© 2021

Lloyd's Register  
Foundation