

27/2/18

HULL SECTIONS: SINGLE SCREW TUGS.

Nos 242 & 3.

FOR THE:

ADMIRALTY:

DIMENSIONS 135'-0" Bx 29'-0" H x 16'-0" MLD

SCALE 2" = 1 FOOT

TO CLASS BRITISH CORPORATION B.S.M. FOR TOWING PURPOSES
AND TO CLASS LLOYDS A.M. FOR TOWING PURPOSES

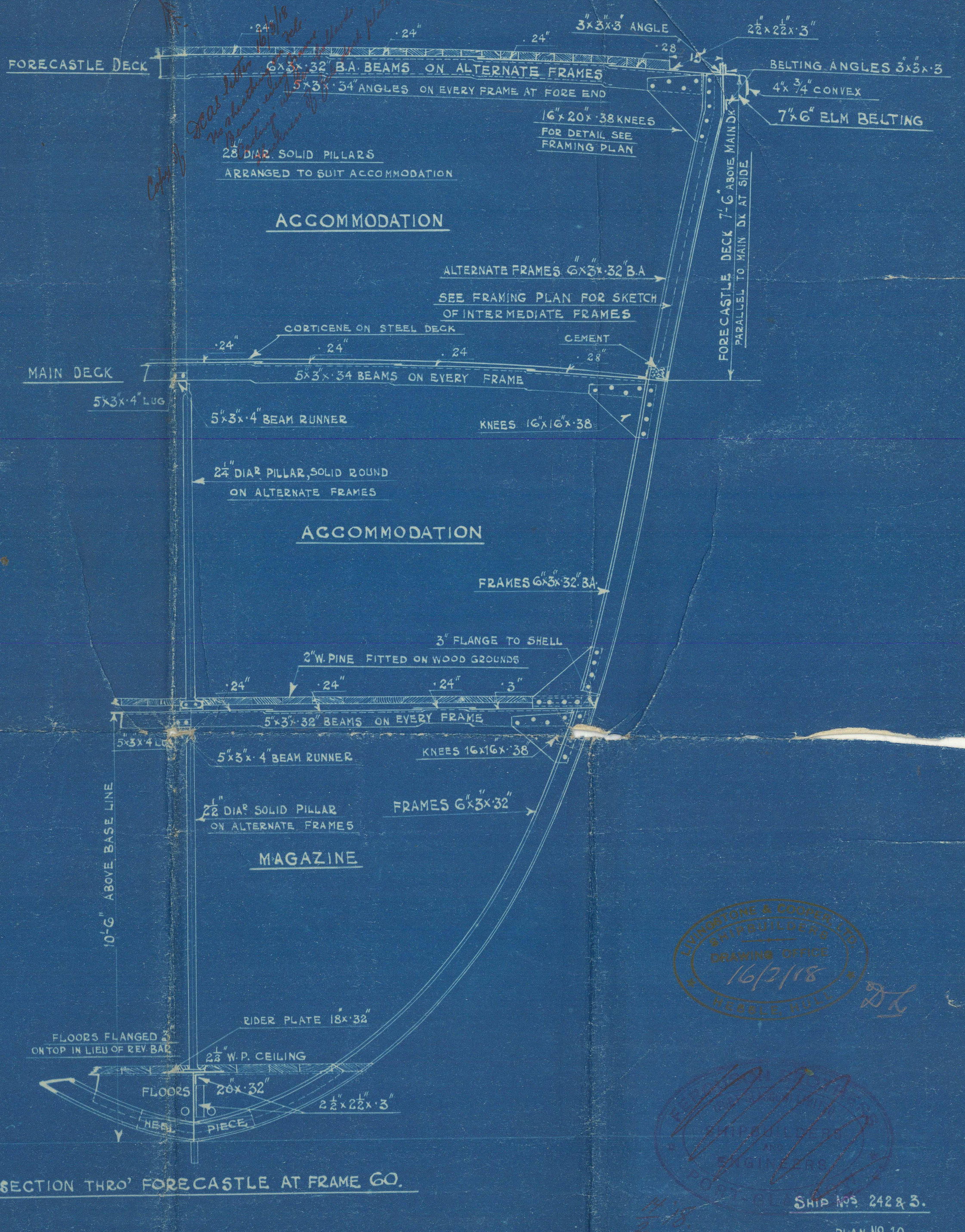
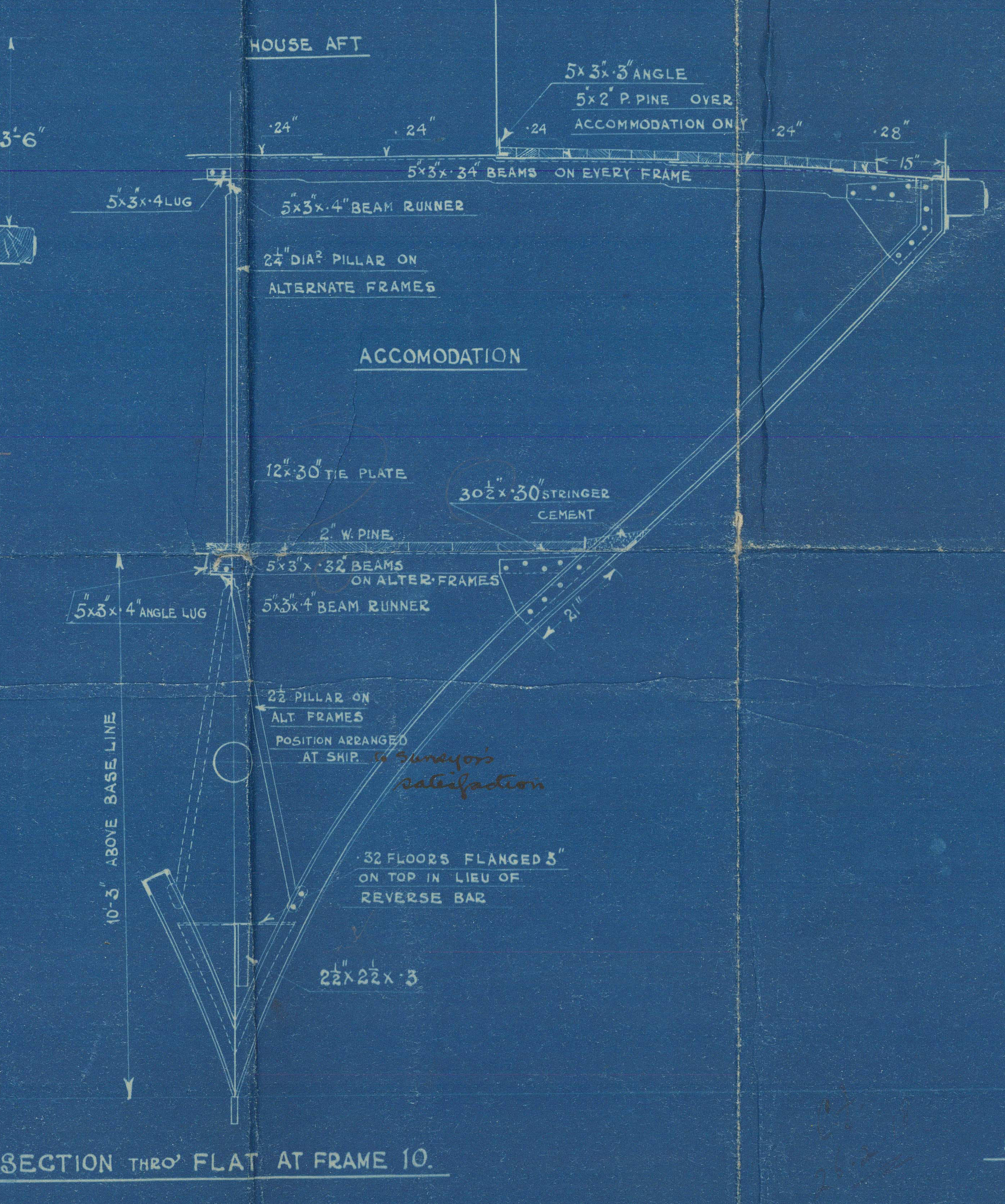
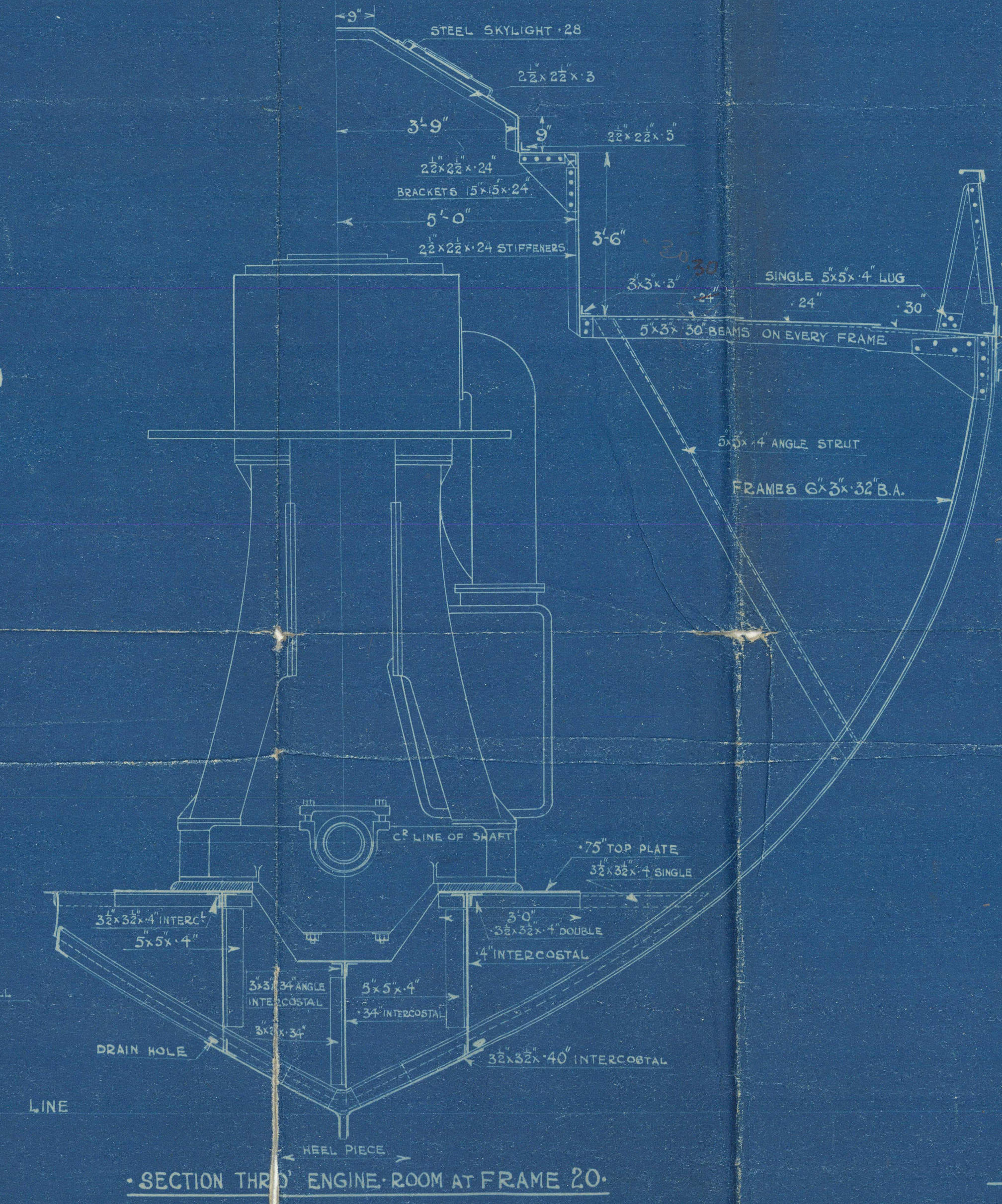
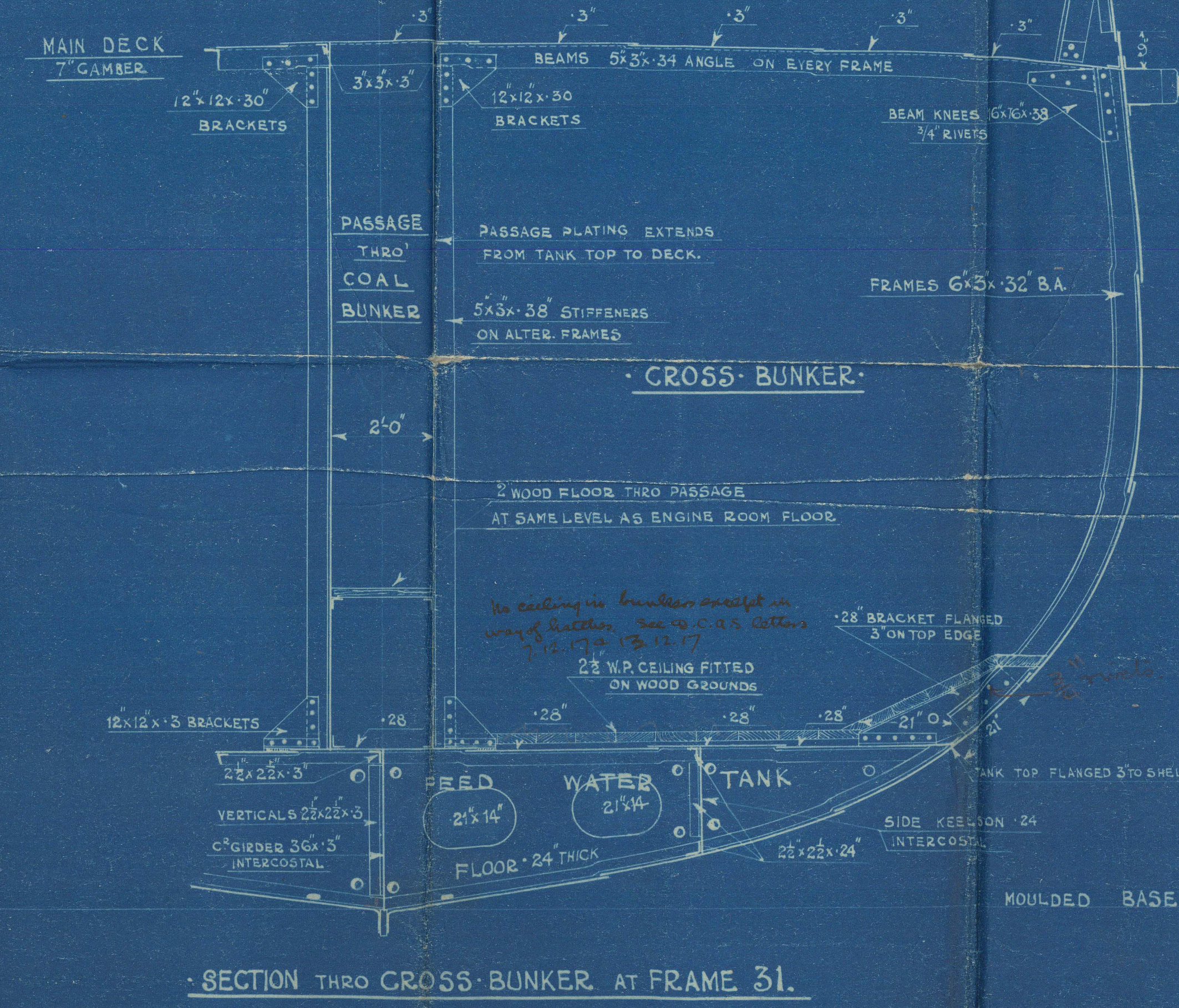
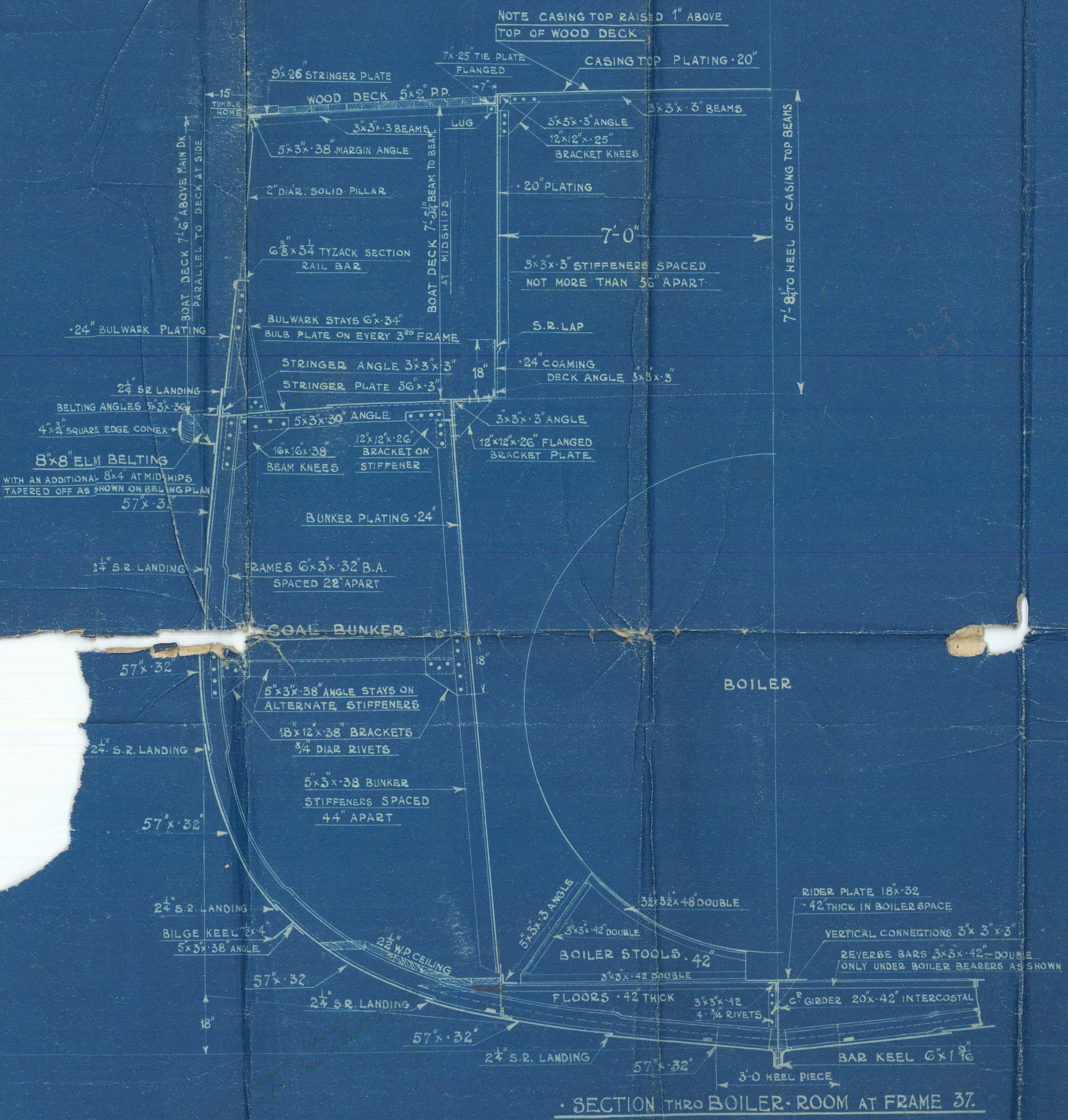
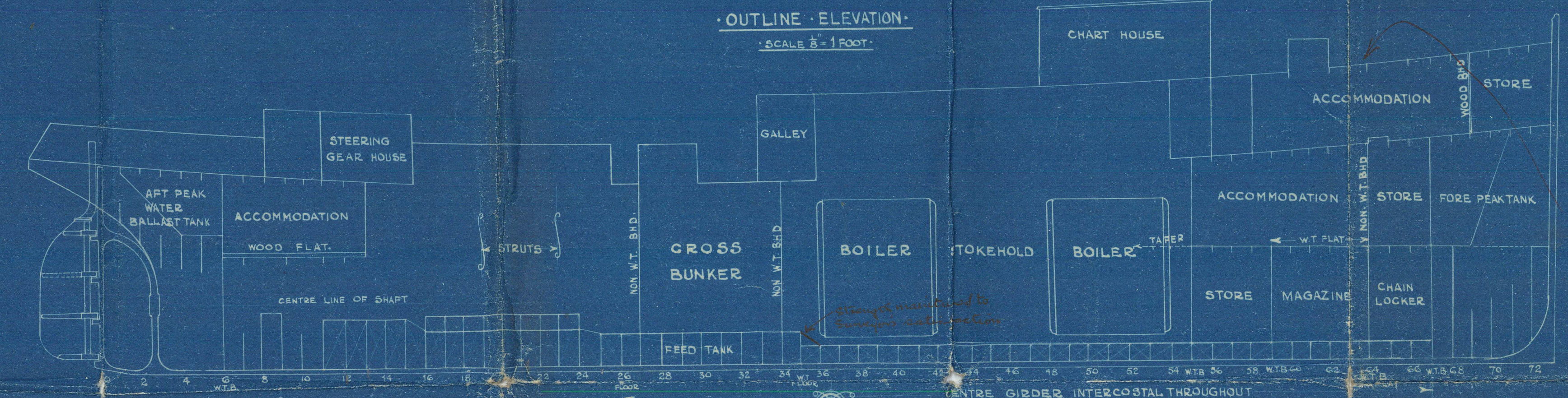
FERGUSON BROTHERS.
(PORT-GLASGOW) LTD.
SHIPBUILDERS & ENGINEERS.

"RESCUE" TYPE.

EQUIPMENT

2	BOWER ANCHORS STOCKLESS	EACH 102 CWT.
1	KEDGE ANCHOR EX STOCK	1 1/4 CWT.
2	SALVAGE ANCHORS TO OWNERS REQUIREMENTS	20 CWT. EACH
120	FATHOMS	18" STUD LINK CHAIN CABLE
60	"	"
115	"	12" MANILLA TOWING HAWSER
75	"	7 1/2" HEMP
120	"	9" MANILLA HAWSER
2-60	"	6" "
90	"	5 1/2" "
2-60	"	4 1/2" "
100	"	3" "
60	"	3/8" FLEXIBLE GALVANIZED STEEL WIRE ROPE, FITTED ON WIRE REEL WITH BRAKE

LIVINGSTONE or COOPER LB
HESSE HULL
Nos 185-6 & 7



16/2/18

SHIP NO. 242 & 3.
PLAN NO. 10.
S.M.B.
1ST FEBRY 1918.

Livingstone & Cooper Ltd.
Wharfedale Hull.

Lugs Nos 185, 6, 7, 8, 9 & 190

(Recumbent type.)

N.N. "VERNICOS NICO AOS"

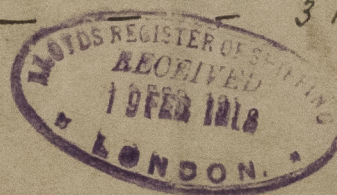
KUMAKI

EX HULL SECTIONS

St. Bolanden - Hull Report No 30999

St. Catherine - - - 31039-31094

St. Clears - - - 31143 (2nd)

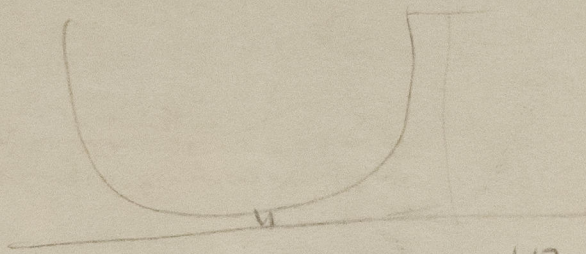


5900-2112-0065



© 2021

Lloyd's Register
Foundation



012108-012112-0065



© 2021

Lloyd's Register
Foundation