

ENCLOSURE No. 87

To R. J. Hunt

BRITISH CORPORATION REGISTER
OF SHIPPING, HULL

S.M. RIVER TRENT

From: THE GOOLE SHIPBUILDING & REPAIRING CO., LTD.
GOOLE
YORKS.

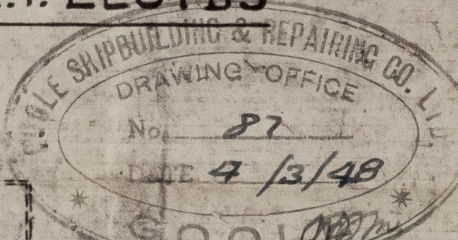
E.9824/47

PROFI

SCALE 1/8" = 1 FOOT

DIMENSIONS:- 116'-0" B.P. x 23'-0" MLD. x 9'-0" MLD.

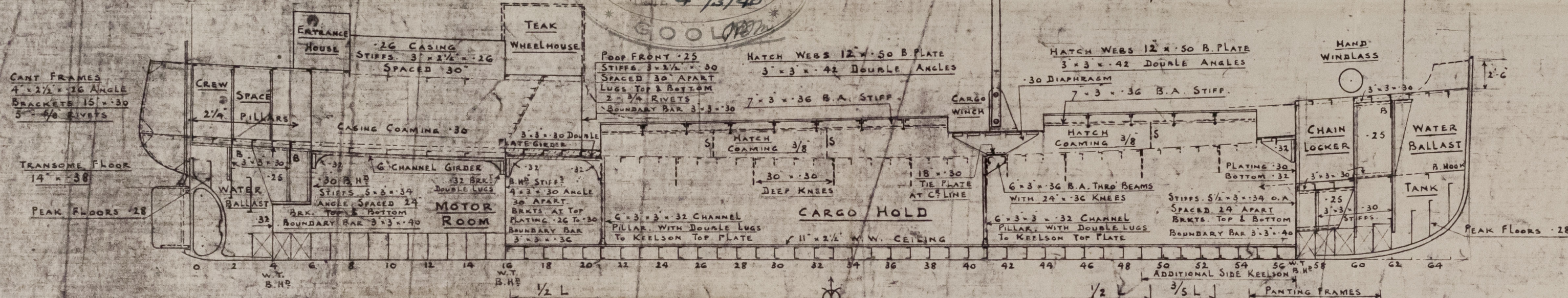
To CLASS + 100 A.I. LLOYDS

BRITISH CORPORATION REGISTER
OF SHIPPING, HULL

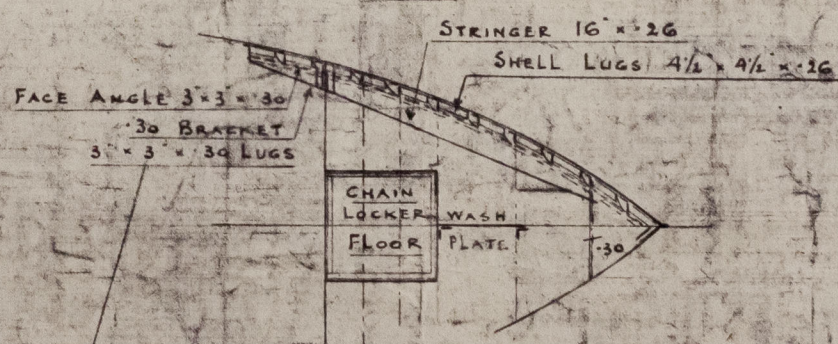
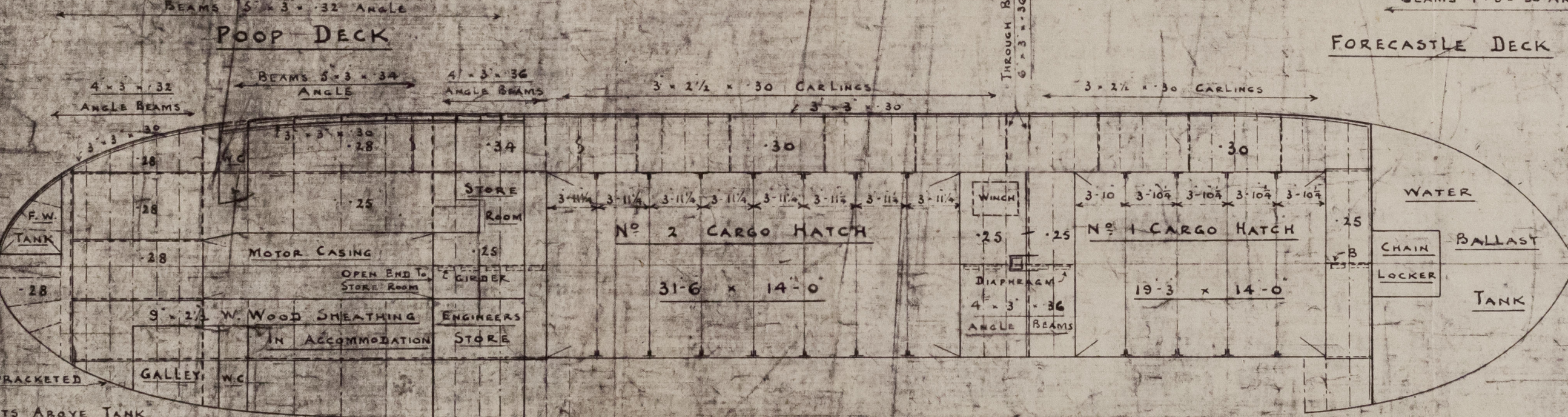
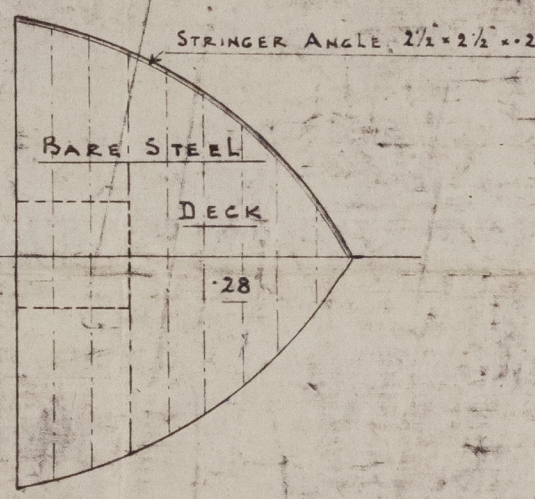
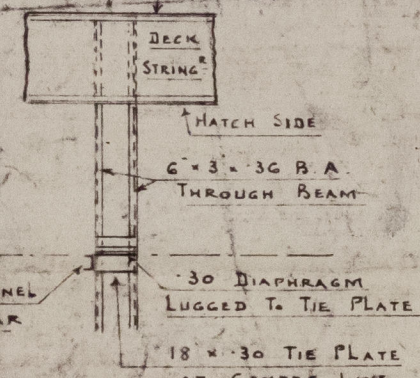
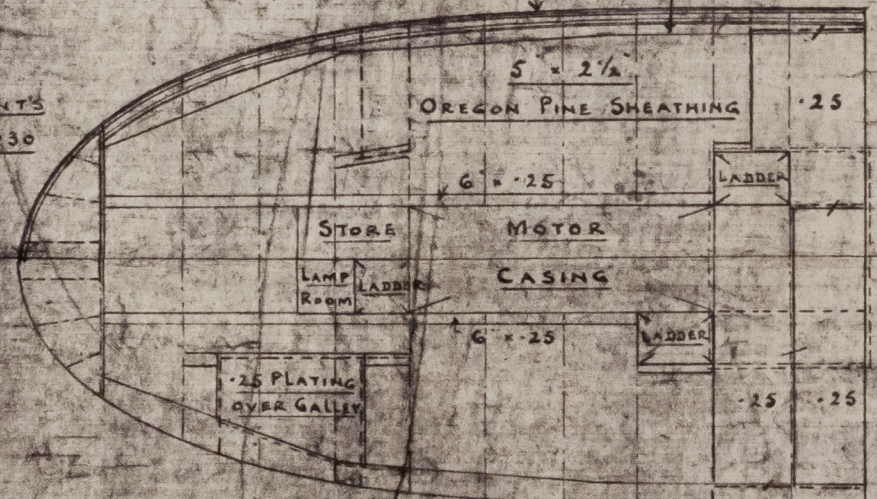
ADDITIONAL STRENGTHENING FORWARD OF 1/2 LENGTH

BACK BARS $3\frac{1}{2} \times 3\frac{1}{2} \times .30$ FROM C² LINE TO 4'-0" W LINE
EXTENDING FORWARD OF 1/2 L. TO STATUTORY POSITION OF
COLLISION B.H.²
ADDITIONAL SIDE KEELSON FORWARD OF 1/2 L. TO COLLISION B.H.²
A & B STRAKES OF SHELL INCREASED TO .33 FORWARD OF 1/2 L.
SEAMS OF BOTTOM SHELL DOUBLE RIVETED FORWARD OF 1/2 L.
RIVETS SPACED 5 1/2 DIAS. APART TO FLOORS
AND PLATING IN BOTTOM FORWARD OF 1/2 L.

8 MAR 1948



FREEBOARD PARTICULARS
COEFF = .72
SHEER = STANDARD



TRACING No. 1432
PRINT No.

GOOLE SHIPBUILDING & REPAIRING CO. LTD.
GOOLE

012096-01210-0091

3

Profile & Deck

5/2 RIVER TRENT

Hull H. 2. 18.

Profile & Deck
5/2 River Trent

Hull

Cap

BS

012096-012101-0091



© 2021

Lloyd's Register
Foundation