

LLOYD'S REGISTER OF SHIPPING

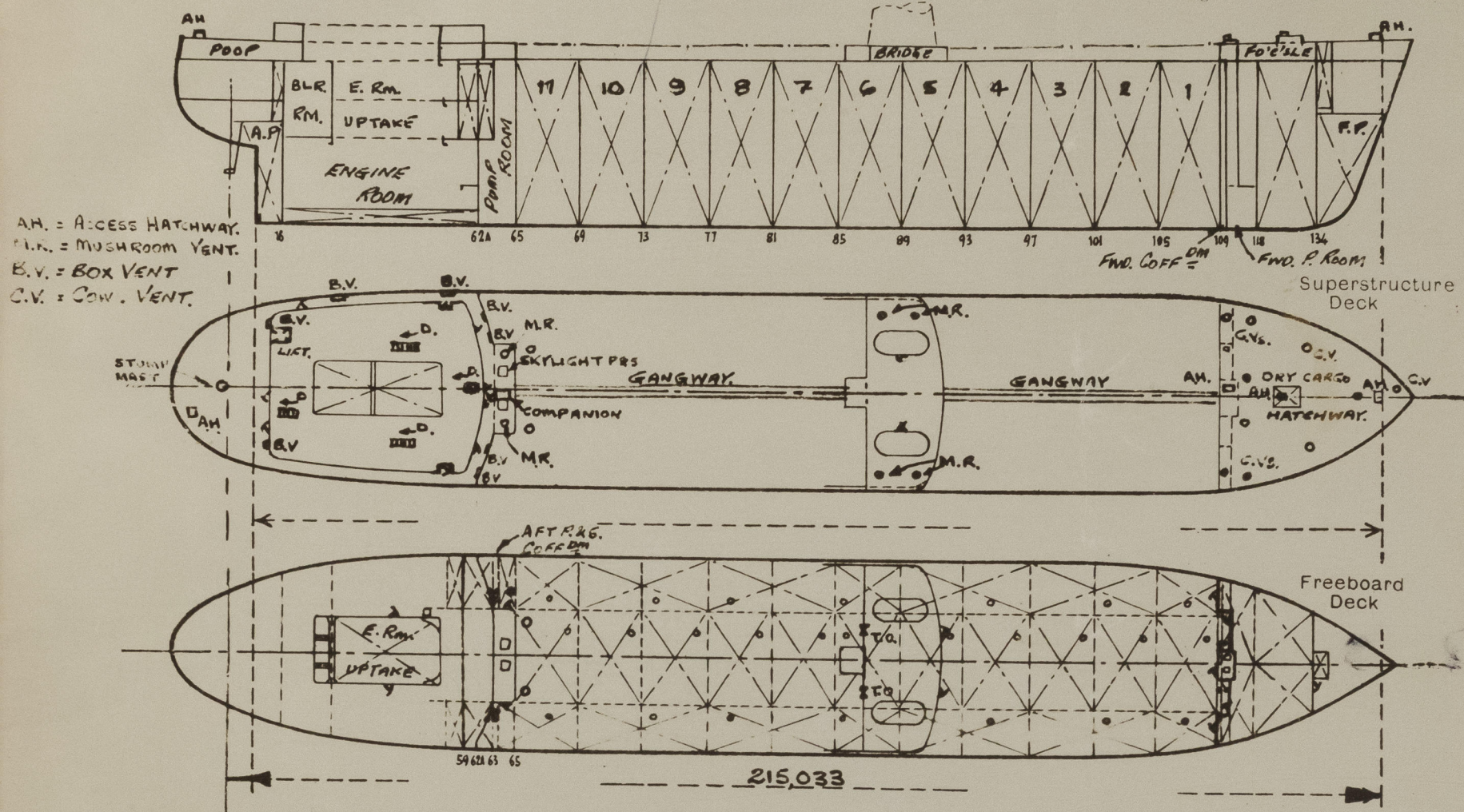
Index No.
(For London Office only.)

SURVEYS FOR FREEBOARD

(CONDITIONS OF ASSIGNMENT)

Ship's Name GIORDANO BRUNOPort of Survey SESTRI GENOAOfficial Number 1028Surveyor's Signature E. WinterNationality and Port of Registry RUSSIAN. ODESSA.Date of Survey DURING CONSTRUCTION

Disposition and dimensions of superstructures, trunks, deckhouses, machinery casings and wood sheathing to be inserted in the diagrams and tabular statement :-



ALL DIMENSIONS IN METRIC UNITS & GIVEN IN MILLIMETRES.

Particulars of Superstructures, Trunks, Casings, Deckhouses.

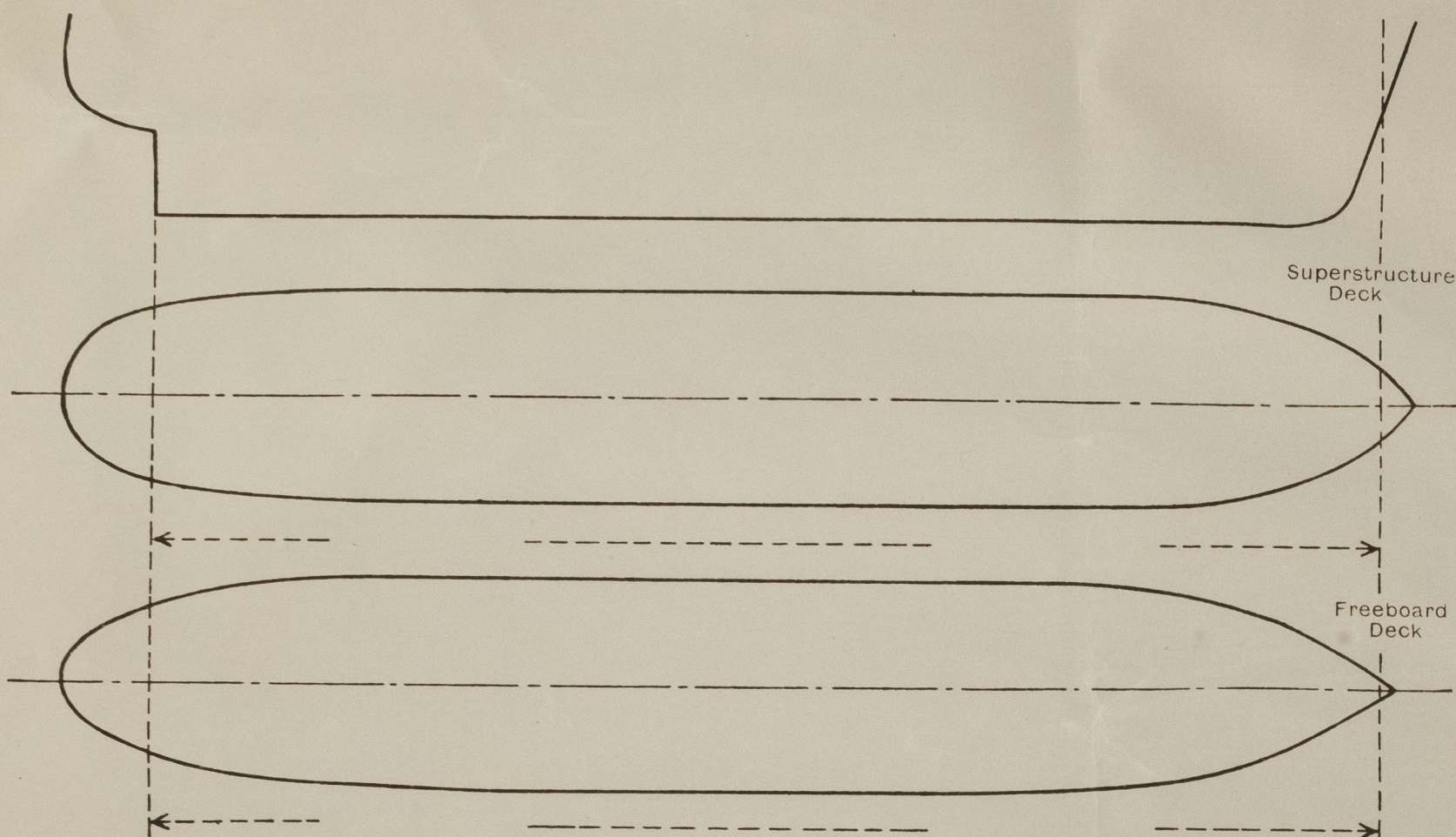
	Coaming	Plating	Stiffeners	Spacing	End Attachments of Stiffeners	Size of Openings	Height of Sills	Height, Beam to Beam
Poop Bulkhead	11.5	11.5	P 300 x 13 TOE WELDED.	850.	WELDED T. & B.	2 @ 1500 x 400	610	2570
Raised Quarter Deck Bulkhead								
Bridge, After Bulkhead	10.0	10.0	P 180 x 13 TOE WELDED	850	WELDED T. & B.	2 @ 1600 x 1200	460	3000
Bridge, Forward Bulkhead	10.5	10.5	P 280 x 13 TOE WELDED	850	WELDED T. & B.	2 @ 1500 x 400	460	3000
Forecastle Bulkhead	8.0	8.0	P 130 x 10.5 WELDED	610	WLD. LUG AT TOP.	4 @ 1500 x 400	460	2879
Trunk, Aft								
Trunk, Forward								
Exposed Machinery Casings on Freeboard or Raised Quarter Decks								
Exposed Machinery Casings on Superstructure Decks								
Machinery Casings within Superstructures not fitted with Class I Closing Appliances								
Deckhouse and Pump Room Entrances	FWD. 8.0 AFT. 11.5	8.0 11.5	P 130 x 10.5 WLD. P 300 x 13 TOE WELDED	610 850	WLD LUG @ T. WLD. T & B.	1500 x 400 1 FWD, 2 AFT.	610	2940 2910

Particulars of Closing Appliances (state if capable of being manipulated from both sides).

Poop Bulkhead	STEEL W.T. DOORS OPERATED FROM BOTH SIDES (CLASS 1.) HINGED.
Raised Quarter Deck Bulkhead	
Bridge, After Bulkhead	STEEL PLATES SECURED WITH HOOK BOLTS (CLASS 2.) PORTABLE, BOLTS SP. 300.
Bridge, Forward Bulkhead	STEEL W.T. DOORS OPERATED FROM BOTH SIDES (CLASS 1.) HINGED.
Forecastle Bulkhead	STEEL DOORS OPERATED FROM BOTH SIDES (CLASS 1.) HINGED.
Exposed Machinery Casings on Freeboard or Raised Quarter Decks	
Exposed Machinery Casings on Superstructure Decks	
Machinery Casings within Superstructures not fitted with Class I Closing Appliances	
Deckhouse and Pump Room Entrances	FWD. STEEL DOOR OPERATED BOTH SIDES. (CLASS 1.) HINGED. AFT. STEEL W.T. DOORS OPERATED BOTH SIDES. (CLASS 1.) HINGED.

PARTICULARS OF PROTECTION TO OPENINGS, ETC.

The following diagrams should be used to indicate the positions of cargo and coaling hatchways, gangway, cargo and coaling ports, side scuttles, scuppers, ventilators, companionways, etc., which would affect the seaworthiness of the ship:—



Particulars of fiddle, funnel and ventilator coamings, engine room skylight and other openings in machinery casing tops and their means of closing:—
NO FIDDLE OPENINGS FITTED.

FUNNEL, VENT. COAMINGS & ENGINE ROOM SKYLIGHT STRONGLY CONSTRUCTED OF STEEL.
FUNNEL FITTED WITH STEEL DOOR, SKYLIGHT HINGED STEEL FLAPS FITTED WITH 8 IN N° FIXED STRONG GLASS BULLSEYES & SECURED W.T. WITH TUGGLES & PACKING.
ON CASING TOP. ACCESS HATCH PORT SIDE. 420x420x200MM. 8THS. FITTED WITH HINGED STEEL W.T. COVER WITH TUGGLES AND PACKING.
VENTILATION AND AIR INTAKES IN CASING SIDE ON BOAT DECK FITTED WITH GRILLS AND HINGED STRONG STEEL COVERS SECURED W.T. BY HINGED TUGGLES.

Particulars of Flush Bunker Scuttles:—

NONE.

Particulars of Companionways:—
 (including those incorporated in deckhouses and masthouses)

AFTER PUMP ROOM:— STRONG STEEL COMPANIONWAY ON P. RM. TOP. STEEL DOOR 1500x650 OPERATED BOTH SIDES. SILL 460. DOOR SECURED W.T. WITH CLIPS & PKG.

ALL COMPANIONWAYS TO POOP ACCOMMODATION & MACHY. CASINGS ARE IN A STRONG STEEL DECKHOUSE 9 IN N° STEEL. DOORS 1500x400 OPERATED BOTH SIDES. SILLS 460, AND 1 IN N° DOUBLE STEEL DOOR TO PROVISION LIFT, SECURED W.T. WITH CLIPS & PKG. OPENING 1800x1800 SILL 260. OPERATED FROM BOTH SIDES ONE SIDE ONLY. (NOT TO BE OPENED WHEN AT SEA)

Particulars of Ventilators in exposed positions on freeboard and superstructure decks:—
FOC'SLE DECK:— 6 IN N° 460 DIA C.V'S. COAMINGS WLD. 1230x10. ADEQUATELY STAYED. 4 IN N° 310 DIA C.V'S COAMINGS WLD. 315x8.5. ALL C.V'S CLOSED WITH STEEL COVERS SECURED W.T. WITH PKG & TUGGLES.

BRIDGE DECK:— 2 P&S 500 DIA MUSHROOM V'S. COAMINGS WLD. 460x10. CLOSED BY 5-REN DOWN STEEL W.T. COVERS WITH PKG.
POOP DECK:— DERRICK STUMP MAST FITTED WITH HINGED STEEL FLAP.

VENTS BUILT INTO DECKHOUSE SIDES & BULKHEADS, 760, 300 & 450 x150. COAMINGS 460x10 WLD. OPENINGS CLOSED WITH HINGED STEEL COVERS SECURED W.T. BY PACKING & TUGGLES. 5 PORT, 3 STB.

PUMP ROOM:— 1 P&S 760 DIA. MUSHROOM VENTS, WLD. COAMINGS 2000x10 SUPPORTED WITH BRACKETS TOP AFT AND CLOSED W.T. WITH SCREW DOWN STEEL COVERS & PACKING.

FREE^{BD} DECK:— 1 P&S. AFT PUMP ROOM VENTS. 864 DIA WLD COLUMNS, 10 THICK SUPPORTED WITH BKTS. OPENING 9500 ABOVE DECK. 750 DIA x10THICK TRUNKING AT POOP DECK LEVEL FITTED TO PMP RM AND PROVIDED WITH HINGED STEEL FLAP.

FOR^{WD} PUMP ROOM:— 2 - 600 DIA COWL VENTS. COAMINGS WLD 915 x10. CLOSED WITH STEEL COVER SECURED W.T. WITH PKG. & TUGGLES.

Particulars of Air Pipes in exposed positions on freeboard, raised quarter, or superstructure decks:—

FOC'SLE DK:— 1 P&S, 1 CR.— 250 DIA. 1 P.— 150 DIA. AT LEAST 460 ABOVE DK TO OPENING.

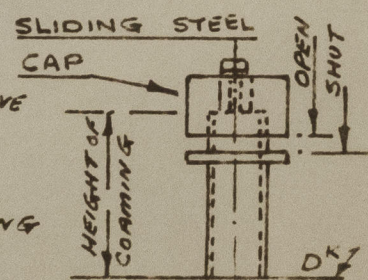
FBD. DK:— 1 P&S, 250 DIA. 1 P&S, 300 DIA. 2 P&S, 1 CR.— 150 DIA. AT LEAST 915 ABOVE DK. TO OPENING.

POOP DK:— 1 P.— 150 DIA. 1 P&S.— 125 DIA. 2 P, 15.— 100 DIA. 5 P, 25.— 80 DIA. 4 P&S, 75 DIA; 1 P.— 65 DIA. 5 P, 35.— 50 DIA. AT LEAST 460 ABOVE DK TO OPENING

BOAT DK:— 1 S.— 250 DIA 460 ABOVE DK. TO OPENING.

CARGO TANKS HAVE COMMON VAPOUR LINE WITH AIR PIPES LED UP FOR^{WD} MAST AND P&S. AMIDSHIP DERRICK MASTS.

ALL AIR PIPES FITTED WITH STEEL CAPS (AS SKETCH.) AND THOSE FROM OIL TANKS OR COFF^{DMS} FITTED WITH GAUZE.



Particulars of Gangway Cargo and Coaling Ports:—

NONE.

Particulars of Scuppers and Sanitary Discharge Pipes:—

EXPOSED FBD. DK. SCUPPERS:— 12 P&S 100 DIA x 16 THICK ELBOW PIECES DIRECT OVERBOARD DISCHARGE.

FOC'SLE DK. SCUPPERS:— 2 P&S. 80 DIA DIRECT DISCHARGE ONTO EXPOSED FBD. DECK.

BRIDGE DK. SCUPPERS:— 2 P&S 80 DIA DIRECT DISCHARGE ONTO EXPOSED FBD. DECK.

EXPOSED POOP DK SCUPPERS:— 5 P&S, 1 & 80 DIA DIRECT OVERBOARD DISCHARGE.

SANITARY DISCHARGES FROM ACCOMMODATION WITHIN POOP ABAFT FRM N° 14 HAVE OVERBOARD DISCHARGE AT FRM. N° 10/11 P&S FITTED WITH BRASS S.D.A.N.R VALVE OPERATED ABOVE FBD. DECK & FITTED WITH OPEN/SHUT INDICATOR.

ALL SOIL PIPES FROM AFTER ACCOMM^{DIN} HAVE COMMON DISCHARGE IN E. RM. 100 DIA BRASS S.D.A.N.R VALVE P&S. ALL SANITARY DISCHARGES FROM AFT. ACCOM^{DIN} EXCEPT ABAFT FRM N° 14 HAVE COMMON DISCHARGE IN E. RM 100 DIA S.D.A.N.R. VALVE (BRASS) P&S. HOSPITAL ON BOAT OK HAS SEPARATE DISCHARGE 100 DIA BRASS S.D.A.N.R VALVE IN E. RM PORT. SOIL & SANITARY DISCHARGES FROM AMIDSHIP ACCOMM^{DIN}. 65 DIA & 100 DIA BRASS N. R. VALVES FITTED ABOVE FBD. DK. WITH 13 THICK O/B DISCHARGE PIPES IN N° 4 P&S BALLAST TANKS.

THERE ARE NO DISCHARGES FROM SPACES BELOW THE FREEBOARD DECK FOR SOIL OR SANITARY SERVICES.

Particulars of Side Scuttles and Deadlights:—

NO SIDE SCUTTLES FITTED BELOW FREEBOARD DECK.

POOP 'TWEEN DECKS:— 12 P&S 400 DIA OPENING TYPE.

6 P&S. 300 DIA " "

BRIDGE 'TWEEN DECKS:— 3 P&S 400 DIA " "

1 P&S 400 DIA IN FOR^{WD} BULK^{HD} OPENING TYPE.

FOR^{WD} PUMP ROOM:— 1 PORT 400 DIA IN AFT BULK^{HD} " "

ALL SIDE SCUTTLES STRONGLY CONSTRUCTED OF BRASS WITH HINGED CAST STEEL DEADLIGHTS FITTED.

Vertical distance of Sill of lowest Side Scuttle above top of keel

Distance from amidships to centre of lowest Side Scuttle

Particulars of Guard Rails and Bulwarks:—

FREEBOARD, FOC'SLE & BRIDGE DECKS INCLUDING F&A GANGWAYS:—

STANCHIONS 1100 HIGH SPD. 1400 FITTED WITH 3 RAILS. STAYS

FITTED APPROX EVERY 4TH STANCHION.

POOP DECK:— FOR^{WD} OF FRM N° 10. BULKHEADS. PLATING & RAIL P160x7

STAYS P160x7 SPACED 1520

ABAFT OF FRM N° 10. GUARD RAILS AS DETAILED ABOVE.

Particulars of Gangways, Lifelines, etc.:—

FORE & AFT GANGWAY FITTED AT LEVEL OF

SUPERSTRUCTURES BETWEEN POOP & BRIDGE

AND BRIDGE & FOC'SLE, AND OF ALL

WELDED CONSTRUCTION.

SUPPORTS:— TUBES 219 DIA x 7.1 THICK SPD. 3050.

TRANSVR. TUBE 109 DIA x 7.1 THICK.

LONG^{TD} PLATE: 420 x10 FLANGES 130.

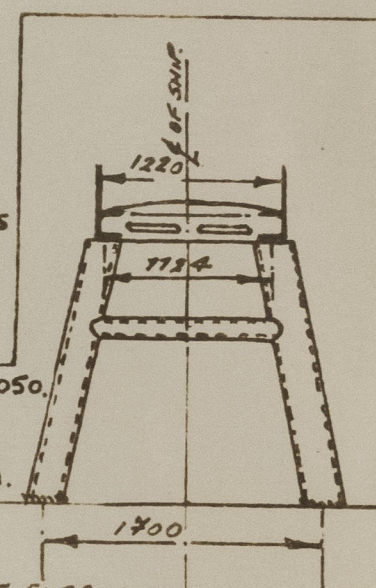
SINGLE DIAGONAL TUBE BRACING F&A.

FITTED EVERY 3RD & 4TH SUPPORT SPACE

P&S. 76 DIA x 6 THICK

PLATFORM: PLATE 5 THICK. BEARERS AT SUPPORTS

I 220 x 80 x 9 ELSEWHERE T 80 x 80 x 9 SPD 1000.



Particulars of Freeing Arrangements.

Length of Bulwark Height of Bulwark Size of Freeing Ports Number each side Area each side Rule area each side

After Well

OPEN RAILS.

Forward Well

State position of each freeing port After Well:—

(P. and A. position and height above deck edge) Forward Well:—

State whether the freeing ports are fitted with shutters, bars, or rails, and give particulars of such:—

Additional area where sheer is less than standard.



© 2021

Lloyd's Register Foundation

PARTICULARS OF PROTECTION TO OPENINGS, ETC.

Description of Hatchway	FBD. DECK. HATCHWAYS ON FREEBOARD AND SUPERSTRUCTURE DECKS.						FO'SLE DECK			POOP DECK
	(22 IN N ^o) (1 P&S) CARGO TANKS	(1 P&S) COFFOMS AFT	(1 P&S) COFFOMS FORWARD	(1 P&S) DEEP TKS. AFT	(1 P.) DEEP TK. AFT	(1 P&S) DEEP TKS. FWD.	F. PK. STORE.	DRY CARGO.	PMP RM. TOP.	
Dimensions of Hatchway	1220 DIA 885	DIA 650	DIA 835	DIA 650	DIA 615	DIA 615	900 x 900	4000 x 4297	900 x 900	580 x 580
COAMINGS	Height above Deck	760	260	260	260	260	230	10	11	10
	Thickness	12	12	12.5	12	12.5	12	10	11	10
	Stiffeners	Sides	Ends	Sides	Ends	Sides	Ends	Sides	Ends	Sides
	Brackets, Stays	Ends	Ends	Ends	Ends	Ends	Ends	Ends	Ends	Ends
HATCH BEAMS	Number	COVER WITH PKG. SECURED W.T. BY STUDS & NUTS 20 DIA SPD. 85.					WLD 80 x 8	HOR. CONT. VER. 2 SPD. 680.	180 x 10	180 x 10
	Spacing						200 x 8	90 x 10	180 x 10	180 x 10
	Scantling and Sketch						BEAM SPD. 820	F&A'S RND. 714.	ACCESS 900 x 900 HATCH FITTED IN COVER. W.T. HINGED 8 THICK SECURED BY 8 TOGGLES	ACCESS 900 x 900 HATCH FITTED IN COVER. W.T. HINGED 8 THICK SECURED BY 8 TOGGLES
	Bearing Surface						COVER STIFFENED WITH WLD 80 x 8 FLATS SPD. 460.	COVER STIFFENED WITH WLD 80 x 8 FLATS SPD. 460.	COVER STIFFENED WITH WLD 80 x 8 FLATS SPD. 460.	COVER STIFFENED WITH WLD 80 x 8 FLATS SPD. 460.
FORE AND AFTERS	Number	COVER WITH PKG. SECURED W.T. BY STUDS & NUTS 20 DIA SPD. 85.					WLD 80 x 8	HOR. CONT. VER. 2 SPD. 680.	180 x 10	180 x 10
	Spacing						200 x 8	90 x 10	180 x 10	180 x 10
	Unsupported Lengths						BEAM SPD. 820	F&A'S RND. 714.	ACCESS 900 x 900 HATCH FITTED IN COVER. W.T. HINGED 8 THICK SECURED BY 8 TOGGLES	ACCESS 900 x 900 HATCH FITTED IN COVER. W.T. HINGED 8 THICK SECURED BY 8 TOGGLES
	Scantling* and Sketch						COVER STIFFENED WITH WLD 80 x 8 FLATS SPD. 460.	COVER STIFFENED WITH WLD 80 x 8 FLATS SPD. 460.	COVER STIFFENED WITH WLD 80 x 8 FLATS SPD. 460.	COVER STIFFENED WITH WLD 80 x 8 FLATS SPD. 460.
HATCH COVERS	Material	STEEL.	STEEL.	STEEL.	STEEL.	STEEL.	STEEL.	STEEL.	STEEL.	STEEL.
	Thickness	12	17	12.5	17	12.5	17	8	8	8
	How fitted	HINGED	BOLTED	HINGED	BOLTED	HINGED	BOLTED	HINGED	HINGED	HINGED
	Bearing Surface	O.T. WITH NEOPRENE PKG.	W.T.	W.T. WITH RUB. PKG.	O.T.	W.T. WITH RUB. PKG.	W.T.	W.T. WITH RUB. PKG.	W.T. WITH RUB. PKG.	W.T. WITH RUB. PKG.
Spacing of Cleats	8-23 DIA		5-23 DIA		5-23 DIA		8-15 DIA	26-24 DIA	8-15 DIA	2-15 DIA
Number of Taraulins...	TOGGLES		TOGGLES		TOGGLES		TOGGLES	TOGGLES	TOGGLES	TOGGLES
	SPQ 480.		TOGGLES		TOGGLES		SPD 460	SPD 680	SPD 460	SPD 460

Particulars of any special features:— (Timber Deck-cargo Fittings, Skylights, Sewage Systems, Ash Ejectors, Rubbish Shoots, etc.)

TANK N^o 5 CR & 4 WING P&S. ARE PERMANENT BALLAST TANKS. HATCHWAY COAMINGS ARE AS FOR CARGO TANKS BUT 12 THICK TOP PLATE IS RIVETED W.T. & FITTED WITH AN ACCESS MANHOLE 620 x 470 CLOSED W.T. WITH A HINGED 8 THICK COVER SECURED WITH 4 IN N^o 20 DIA TOGGLES & PKG.

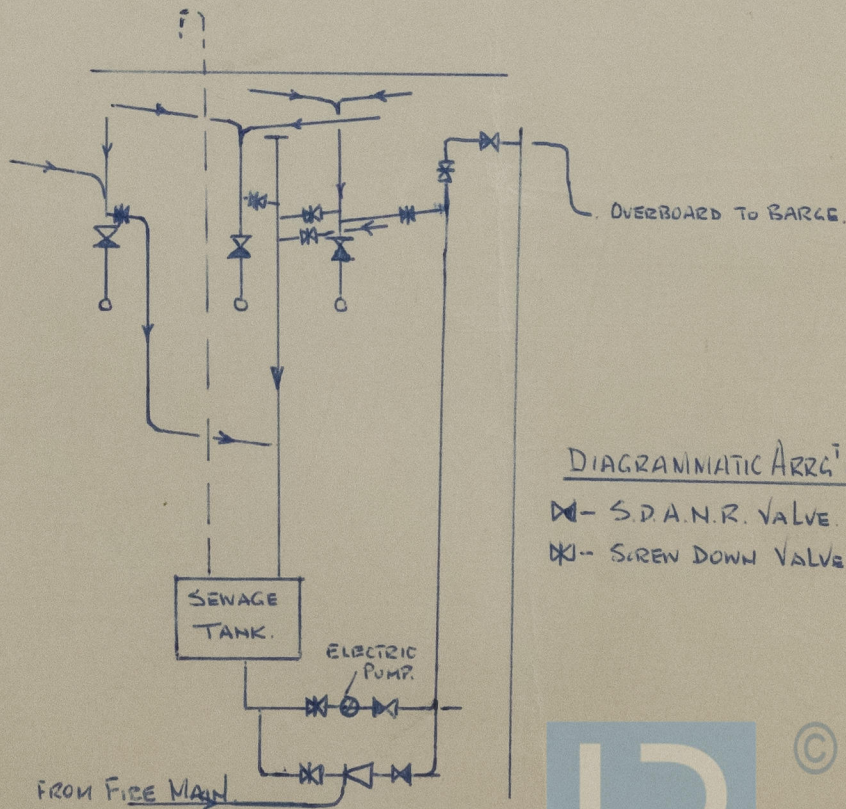
BUTTERWORTH OPENINGS:— 318 DIA FITTED ON FBD. DECK. 84 ON EXPOSED DECK, 6 WITHIN FO'SLE, 2 IN AFT. PUMP RM, 4 WITHIN BRIDGE, FITTED WITH. O.T. STEEL COVERS SECURED BY 4-15 DIA TOGGLES & PACKING, ADEQUATE DECK COMPENSATION FITTED. COAMINGS 280 x 14.

SEARCHLIGHT OPENING:— IN STEM PLATING INSIDE FO'SLE, HINGED STEEL COVER ADEQUATELY STIFFENED, 1100 DIA, SECURED W.T. WITH RUBBER PACKING & 6 TOGGLES.

RUBBISH SHOOT. Fitted P.S. FROM GALLEY IN POOP DECKHOUSE. 16 THICK M.S. TUBE FITTED WITH HINGED STEEL W.T. COVER SECURED BY TOGGLES. WEIGHTED STEEL FLAP FITTED.

AFTER PUMP ROOM SKYLIGHTS. 2 IN N^o FITTED ON PUMP ROOM CASING TOP. STRONGLY CONSTRUCTED OF STEEL WITH HINGED STEEL W.T. FLAPS SECURED WITH TOGGLES AND FITTED WITH STRONG FIXED GLASS BULLSEYES. COAMINGS 460 HIGH.

SEWAGE SYSTEM. SOIL & SANITARY SERVICES FOR AFTER ACCOMMODATION ARE PROVIDED WITH A SEPTIC TANK AND DISCHARGE SYSTEM WITH HOSE CONNECTION ABOVE EXPOSED FBD. DK. FOR DISPOSAL OF SEWAGE IN PORT.



DIAGRAMMATIC ARR^g OF SEWAGE SYSTEM.

S.D.A.N.R. VALVE.
 SCREW DOWN VALVE.



© 2021

Lloyd's Register Foundation