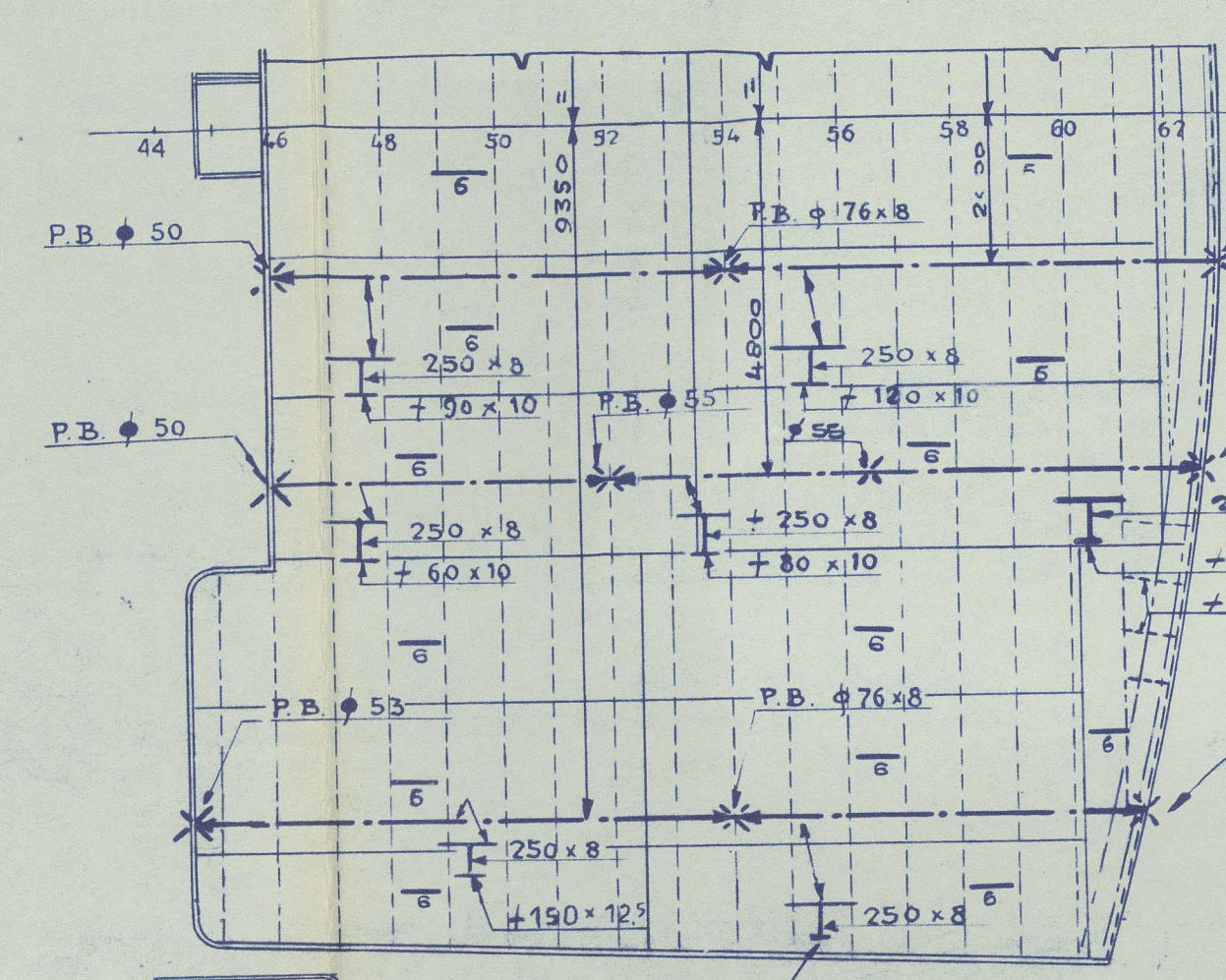


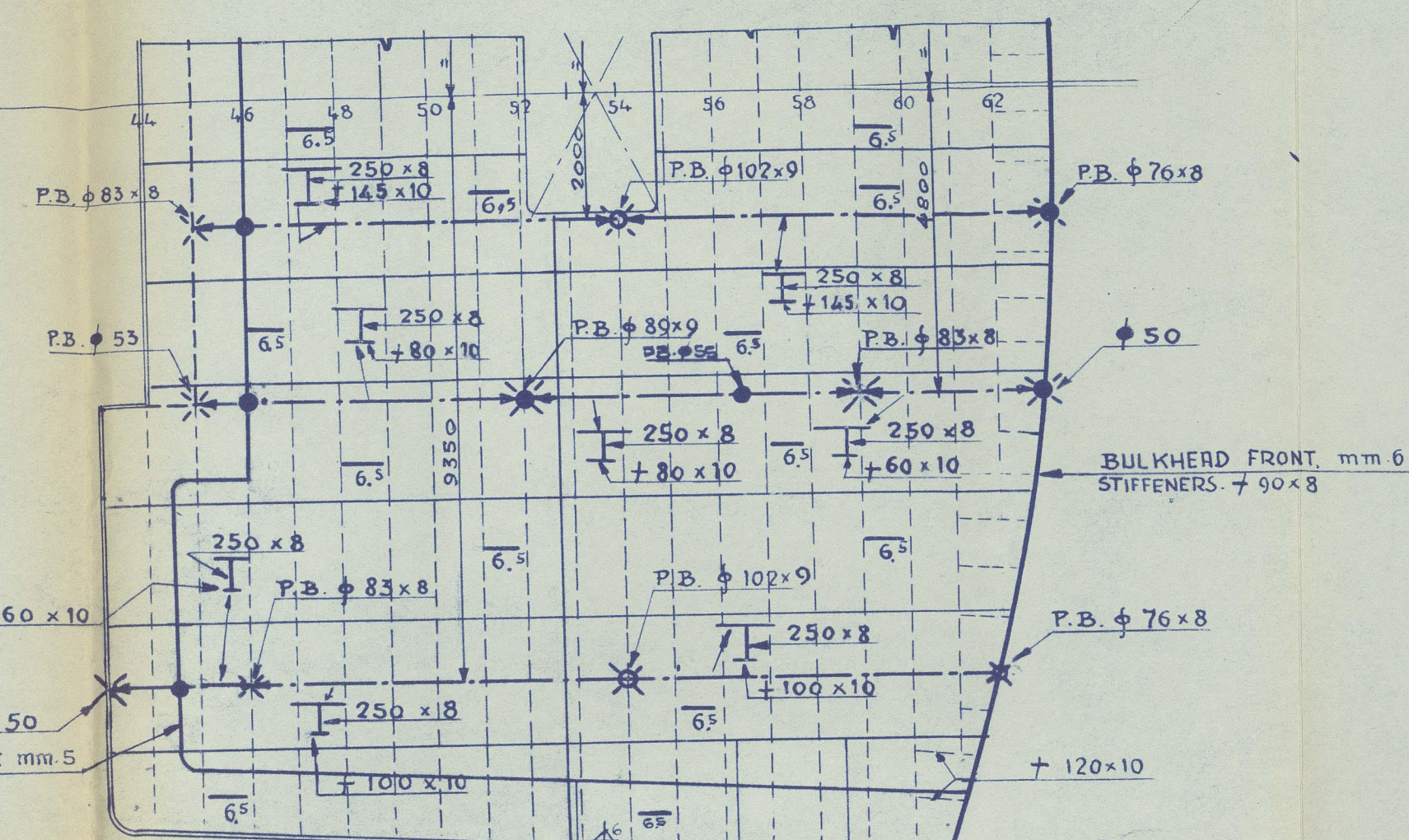
# TOP CAPTAIN DECK

HEIGHT OF LOWER TWEEN DECK 2440  
BEAMS L 100x50x8 AT 75x340



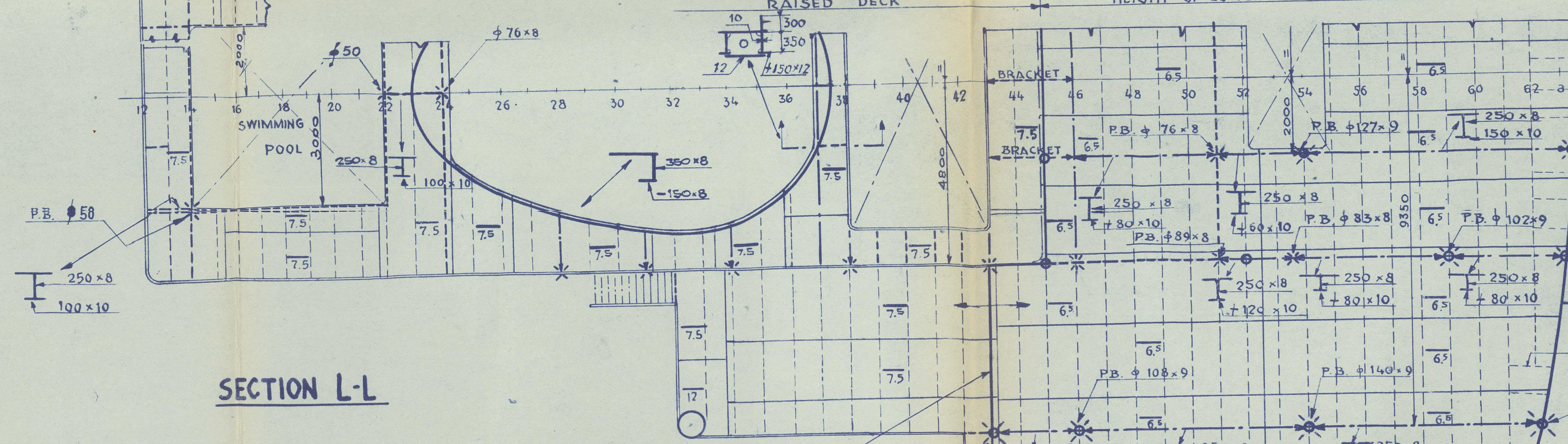
# CAPTAIN DECK

HEIGHT OF LOWER TWEEN DECK 2440  
BEAMS L 100x50x8 AT 75x340

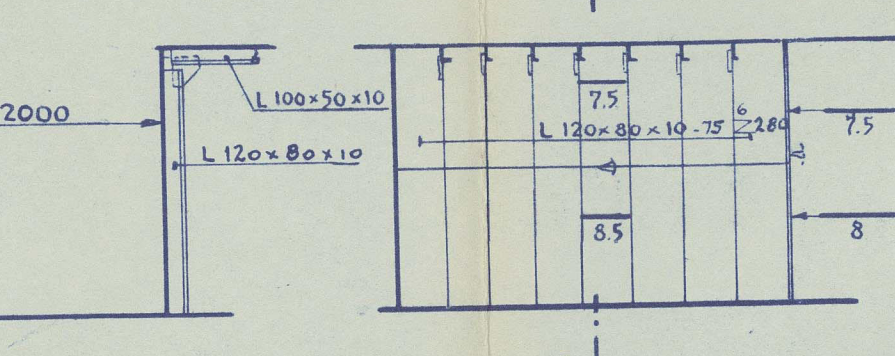


# OFFICERS DECK

BEAMS L 100x50x10 AT 75x340

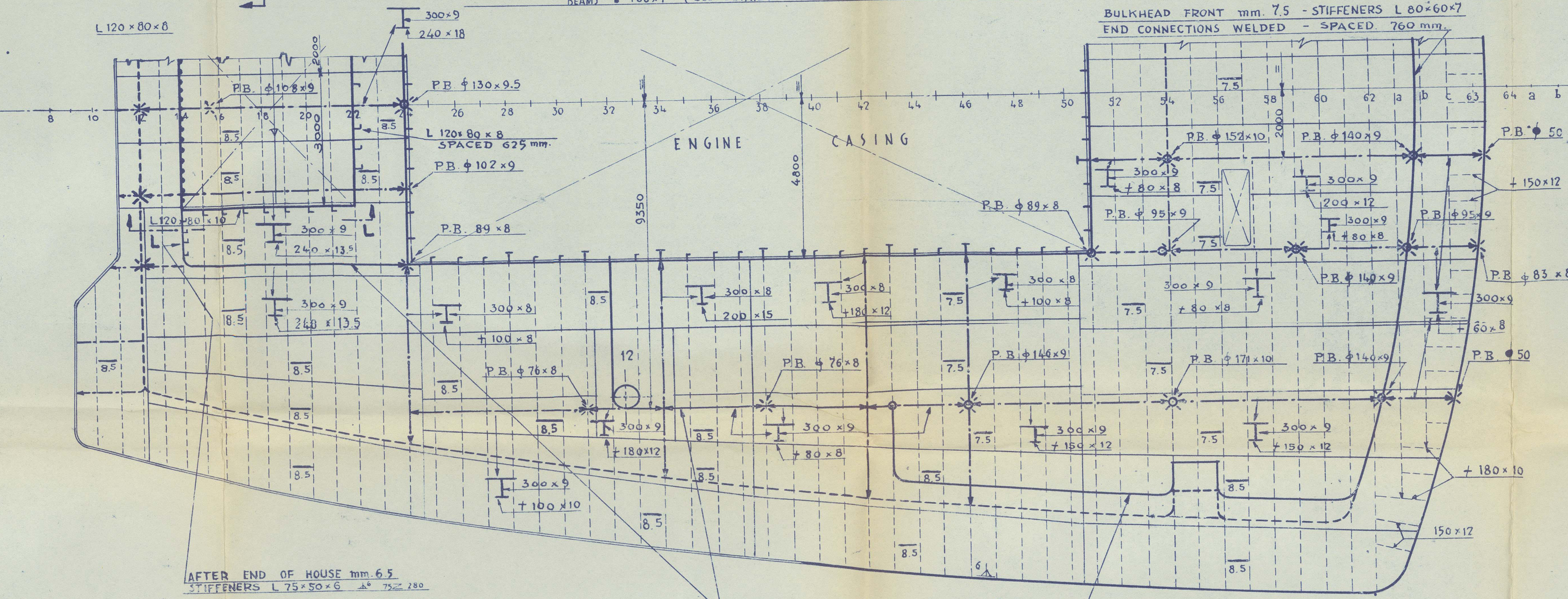


# SECTION L-L



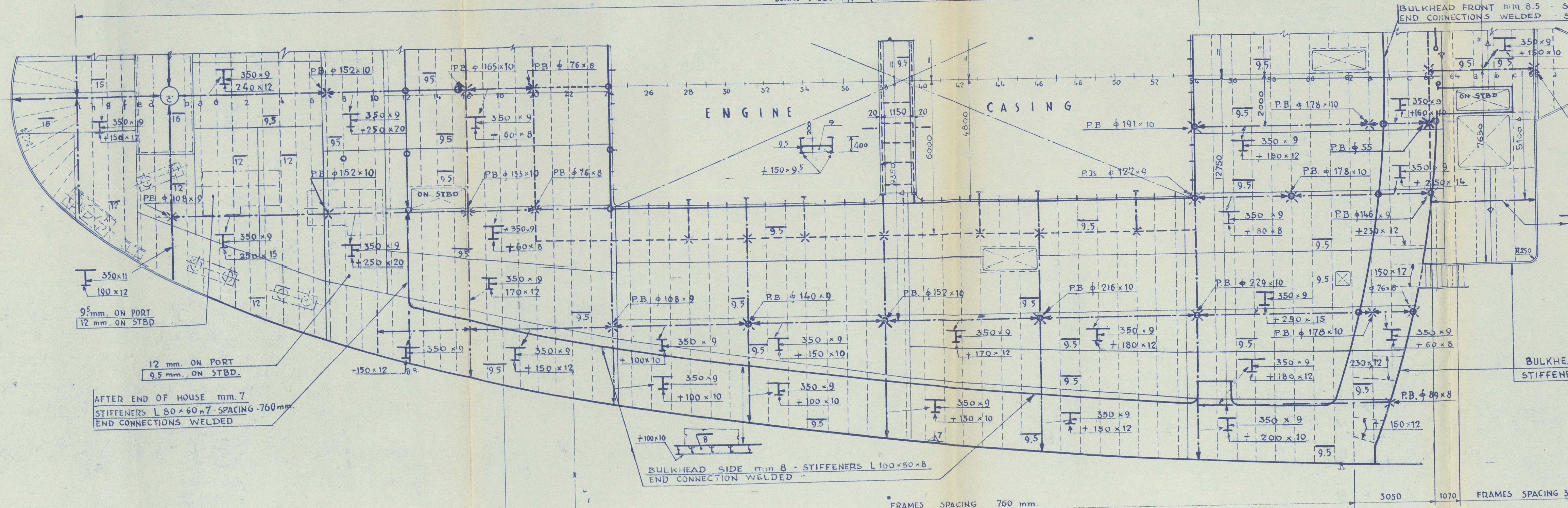
# BOAT DECK

HEIGHT OF LOWER TWEEN DECK 2440  
BEAMS L 160x7 (SEE DETAIL)

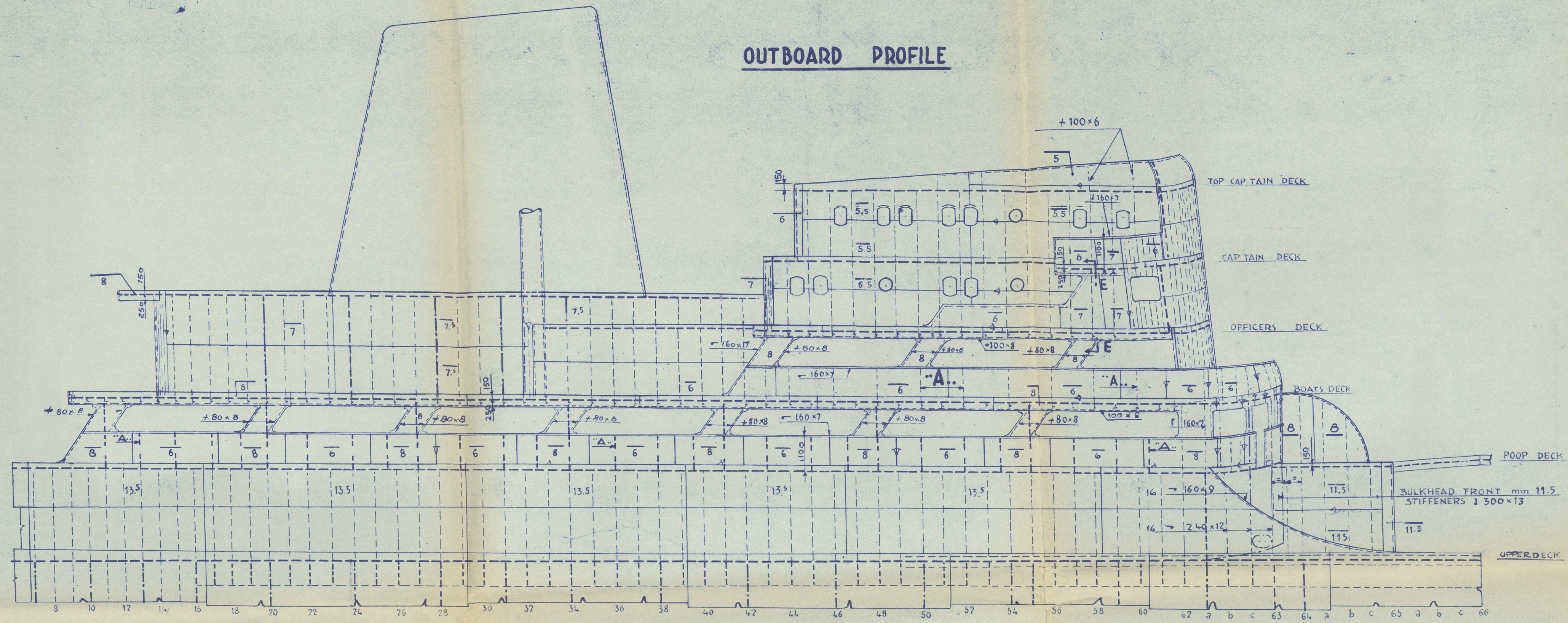


# POOP DECK

HEIGHT OF LOWER TWEEN DECK 2440  
BEAMS L 200x11 (SEE DETAIL)

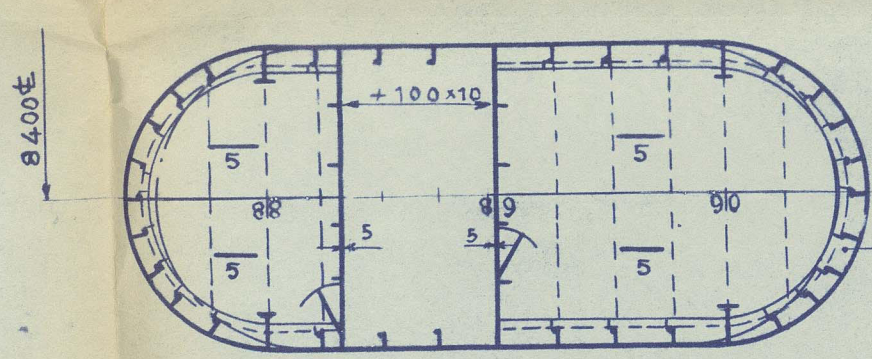


# OUTBOARD PROFILE



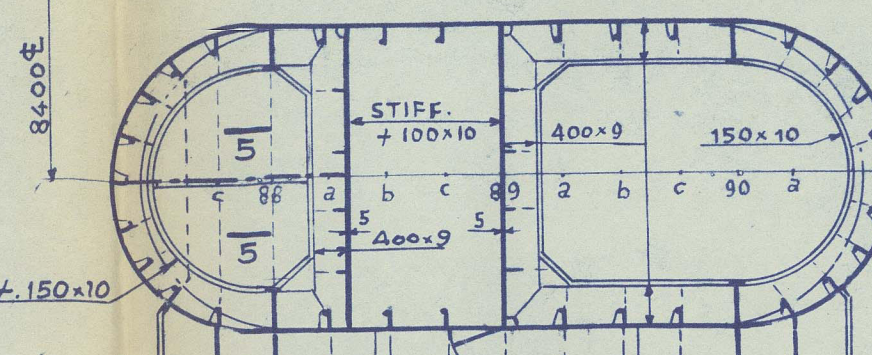
# UPPER PLATFORMS

HEIGHT OF LOWER TWEEN DECK 2440  
BEAMS L 100x7



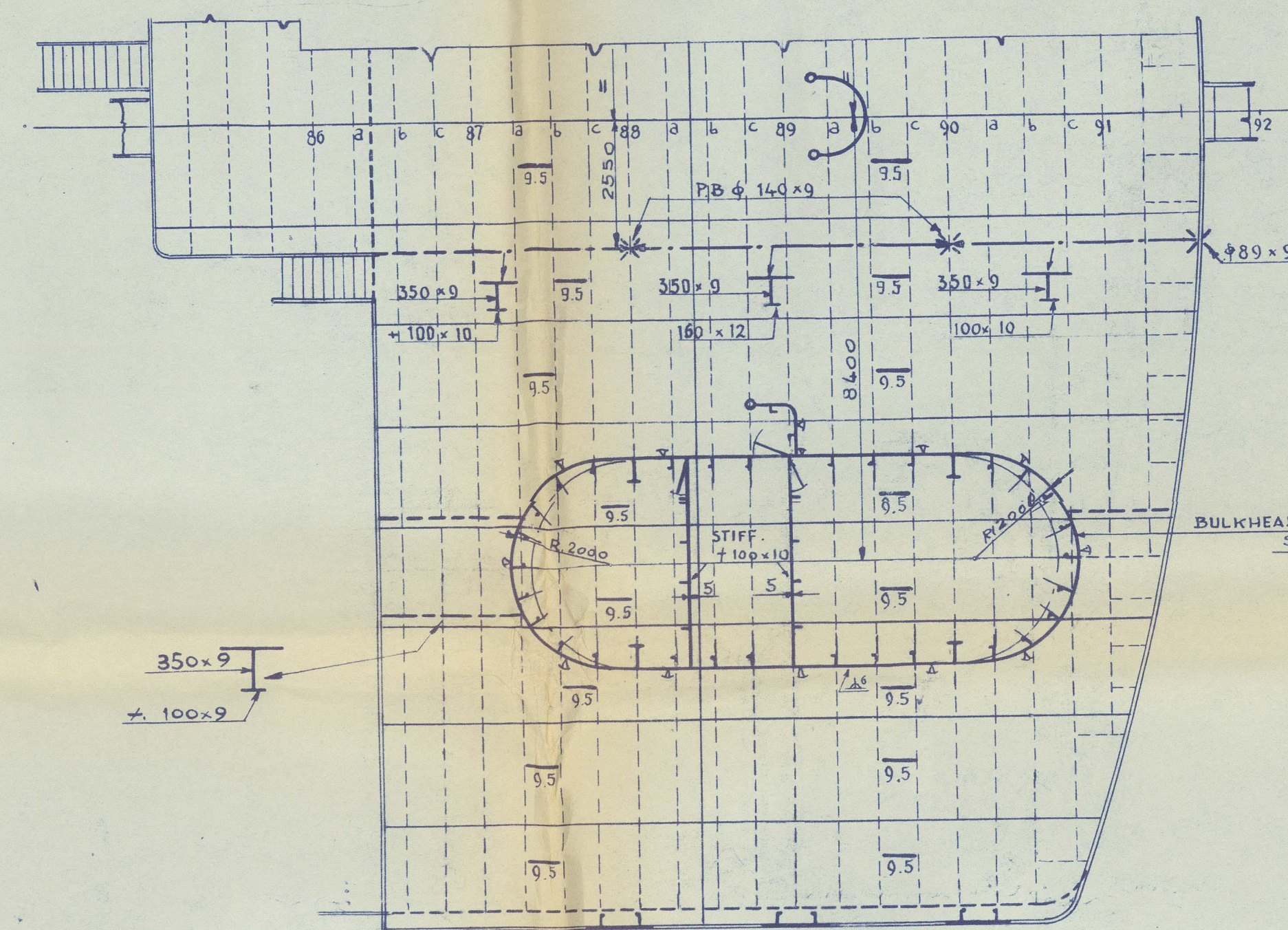
# LOWER PLATFORMS

HEIGHT OF LOWER TWEEN DECK 2440  
BEAMS L 100x7

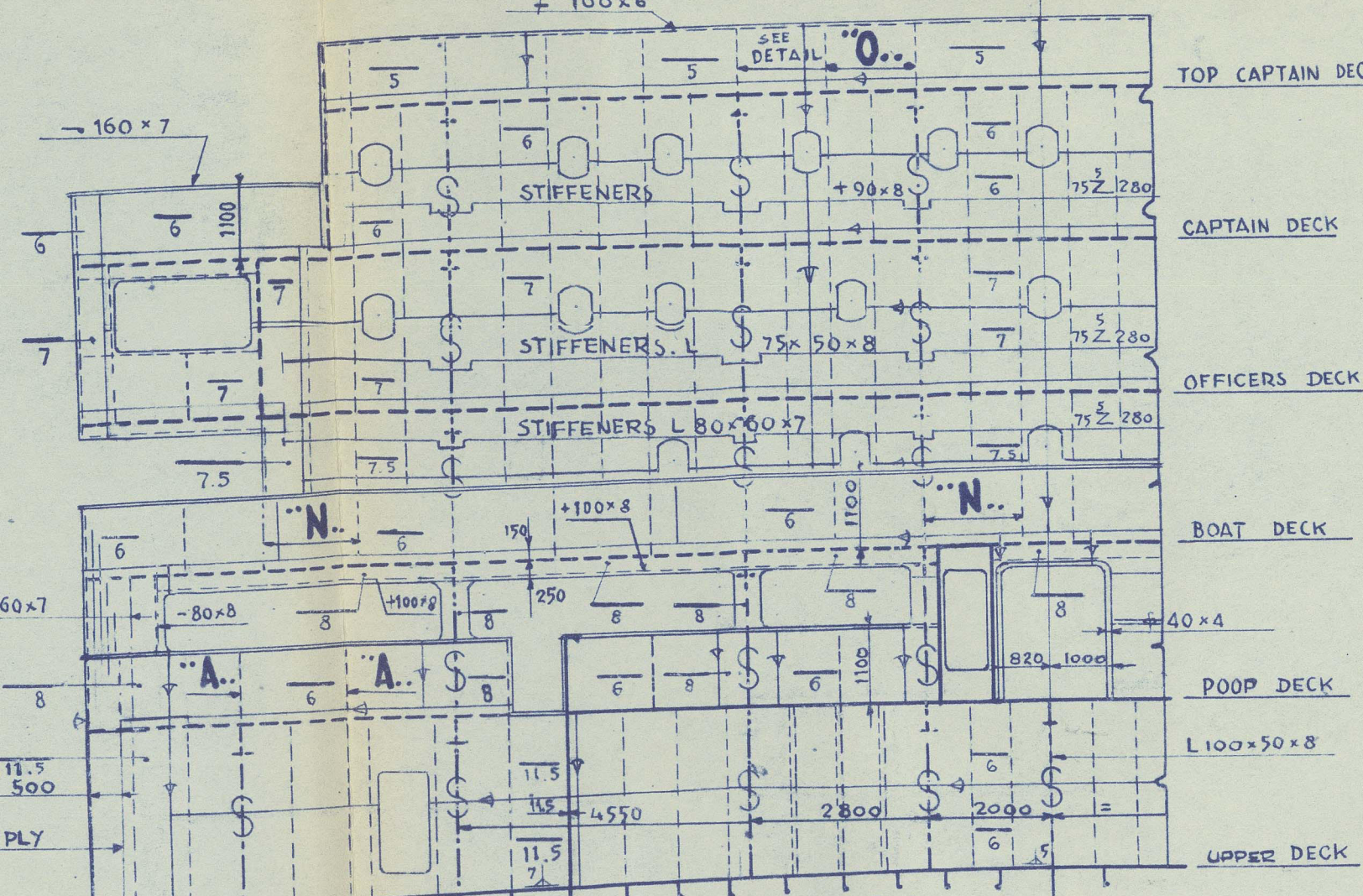


# BRIDGE DECK

HEIGHT OF LOWER TWEEN DECK 2440  
BEAMS L 200x10 (SEE DETAIL)

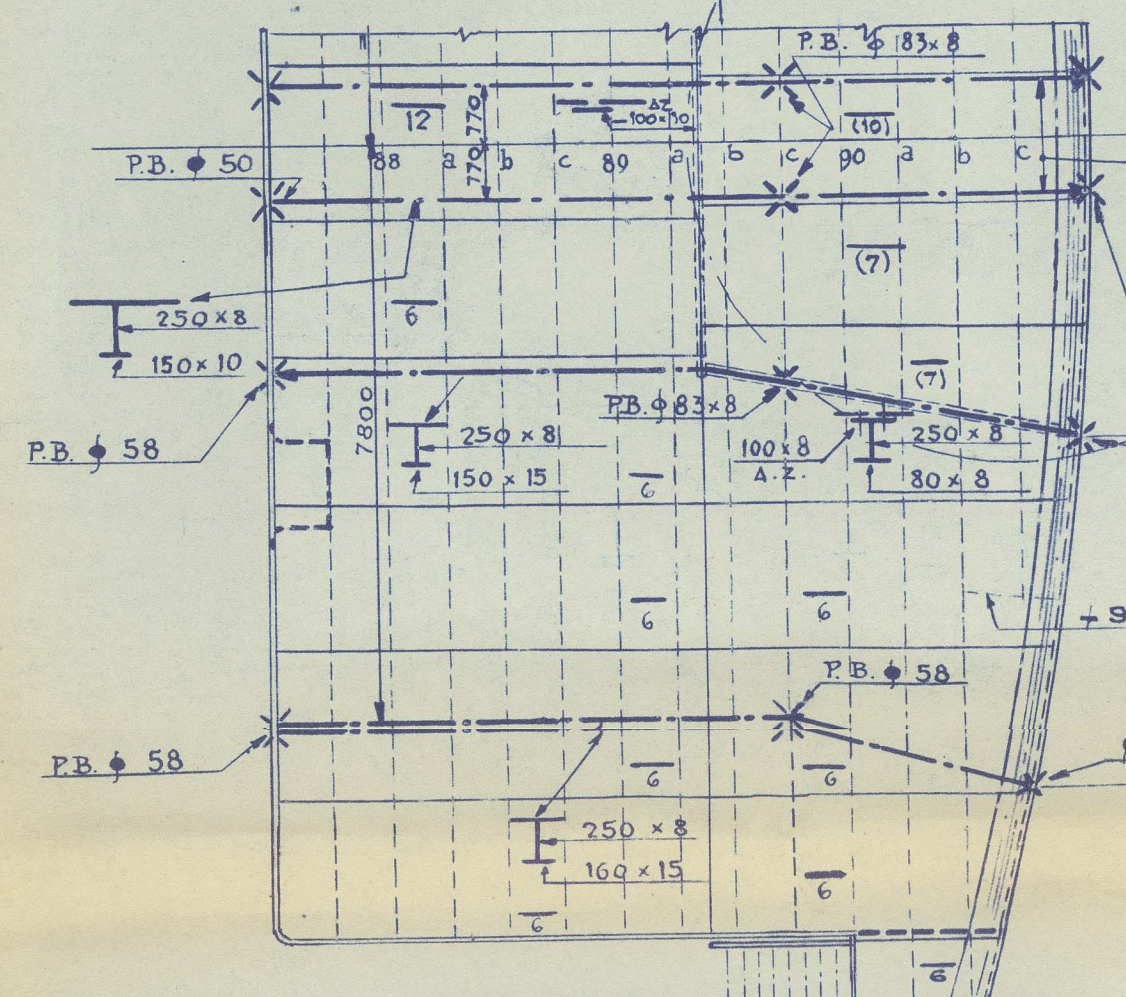


# FRONT VIEW AT FRAME 63



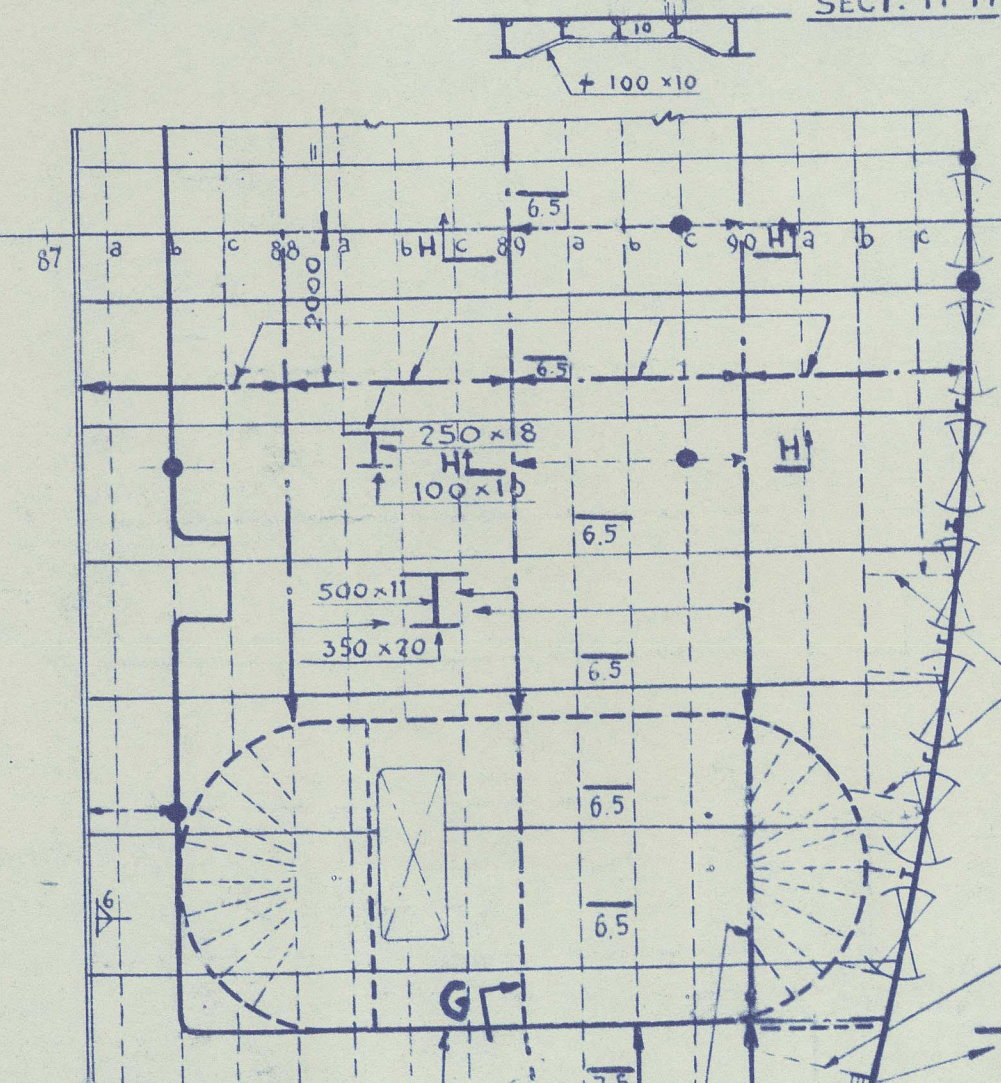
# TOP NAVIGATING BRIDGE

HEIGHT OF LOWER TWEEN DECK 2440  
BEAMS L 100x7 (SEE DETAIL)

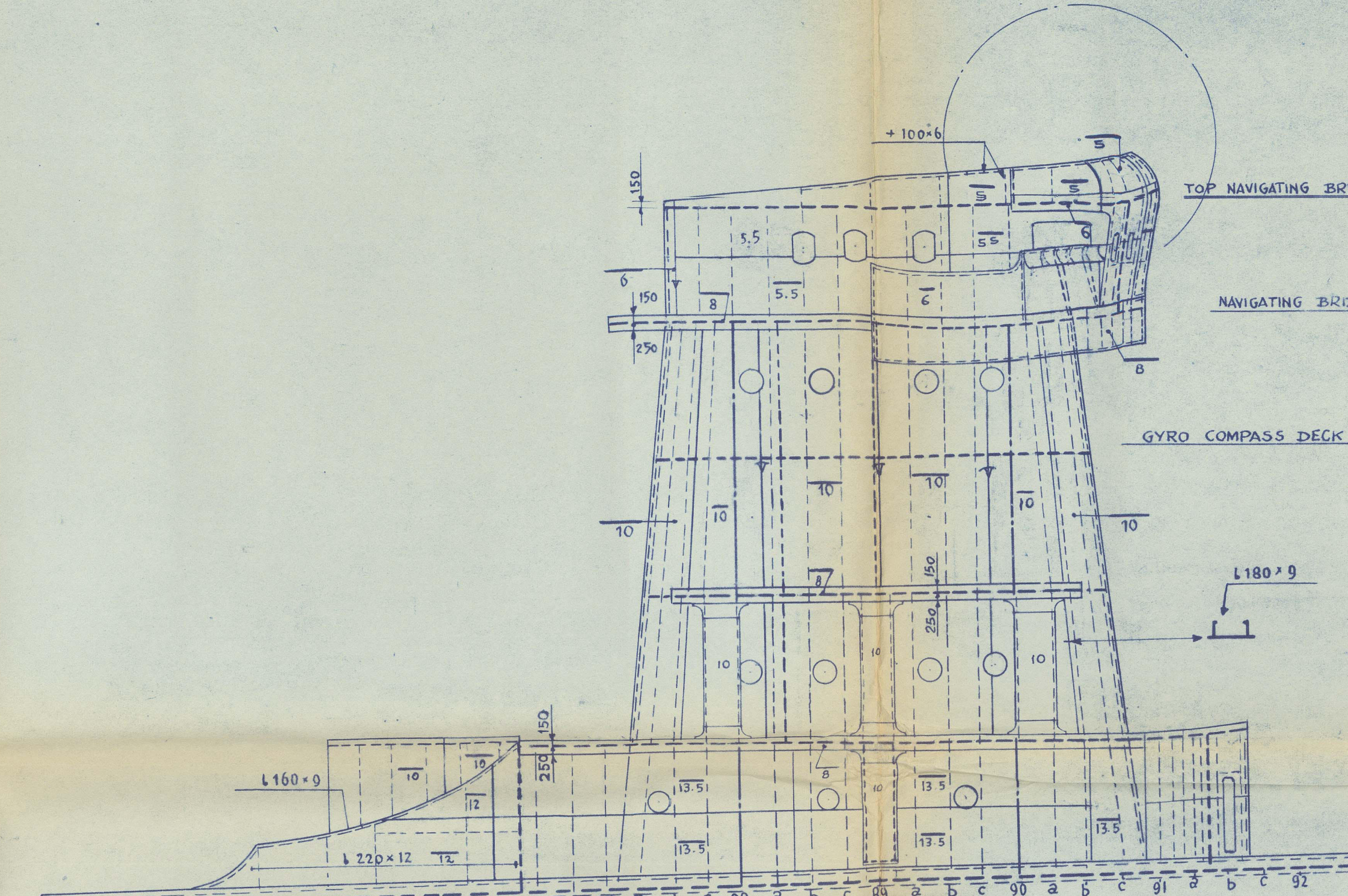


# NAVIGATING BRIDGE

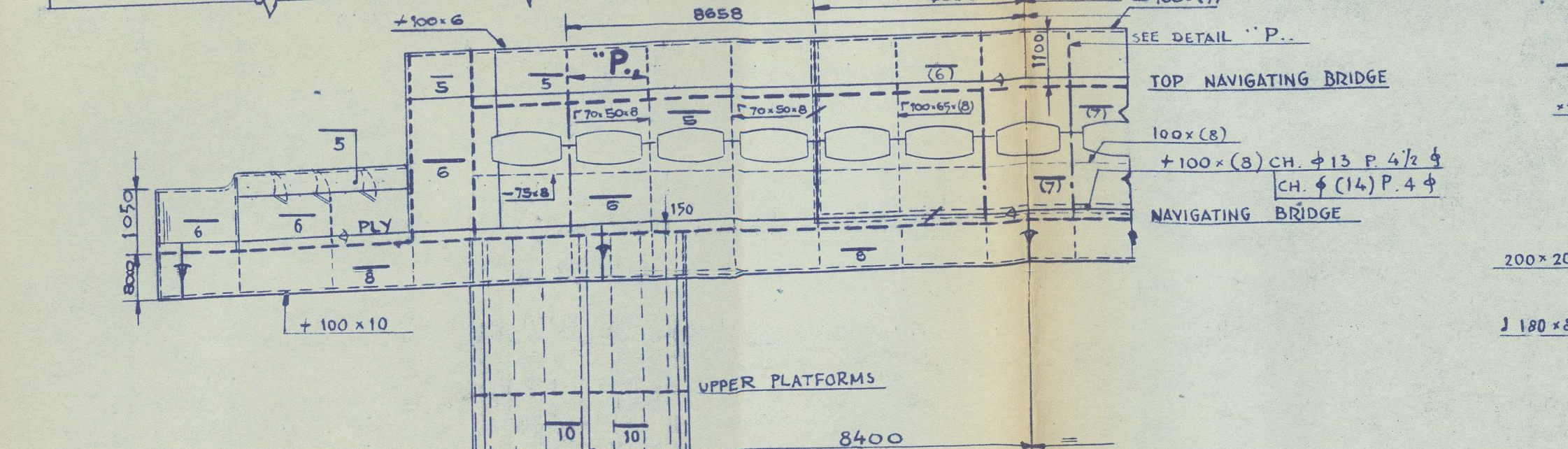
HEIGHT OF LOWER TWEEN DECK 2440  
BEAMS L 100x7 (SEE DETAIL)



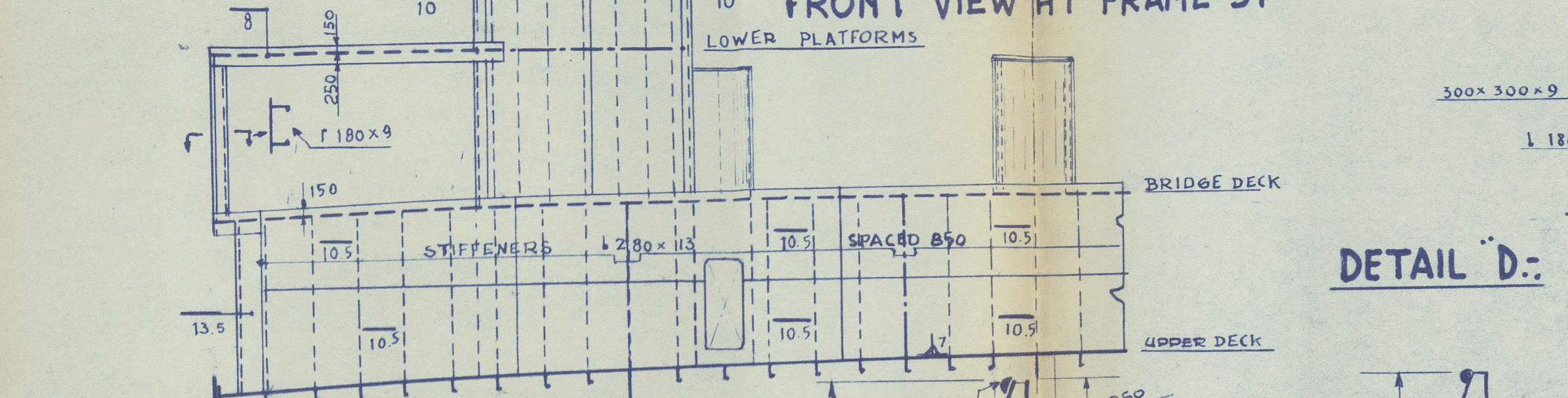
# OUTBOARD PROFILE



# SECT. FRAME 89a

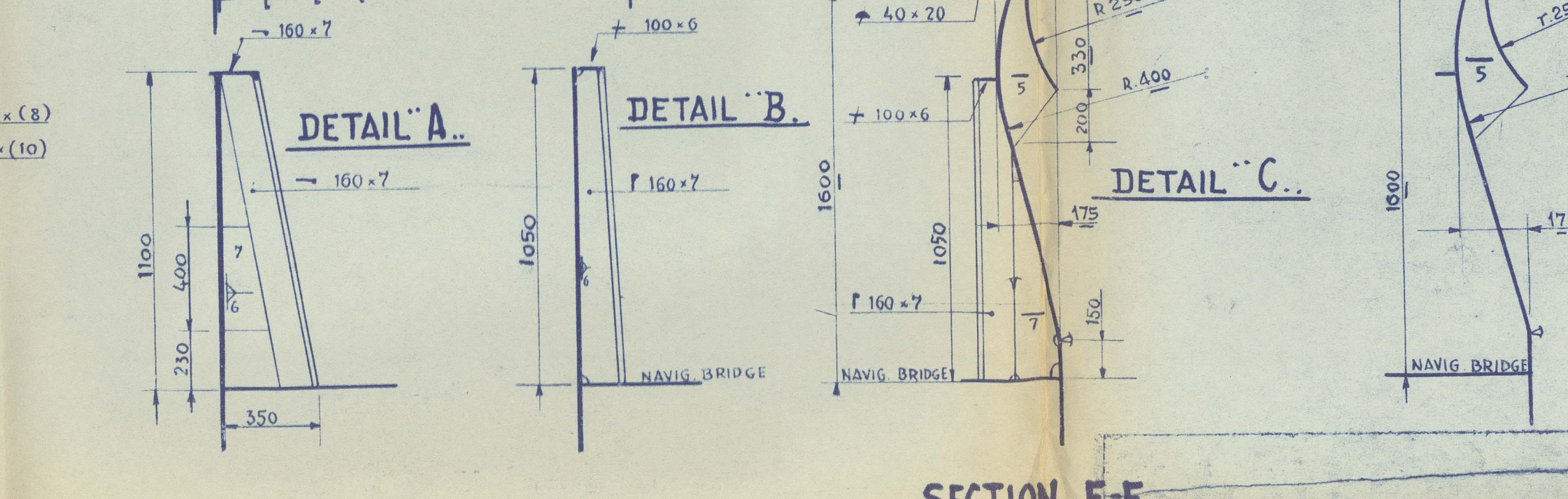


# FRONT VIEW AT FRAME 91



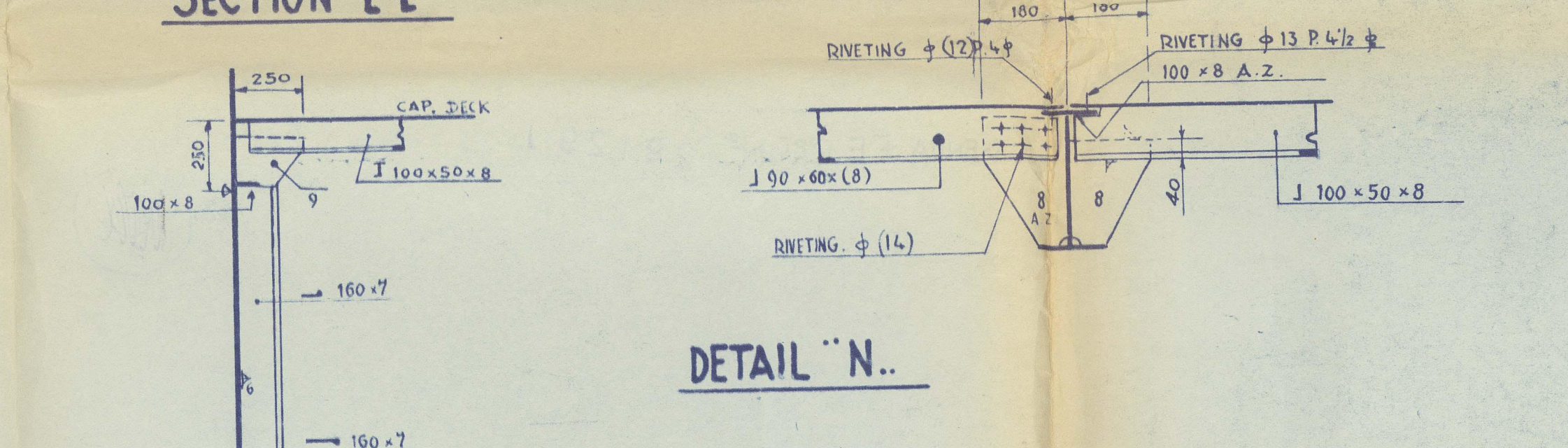
# DETAIL D-D

# DETAIL O-O

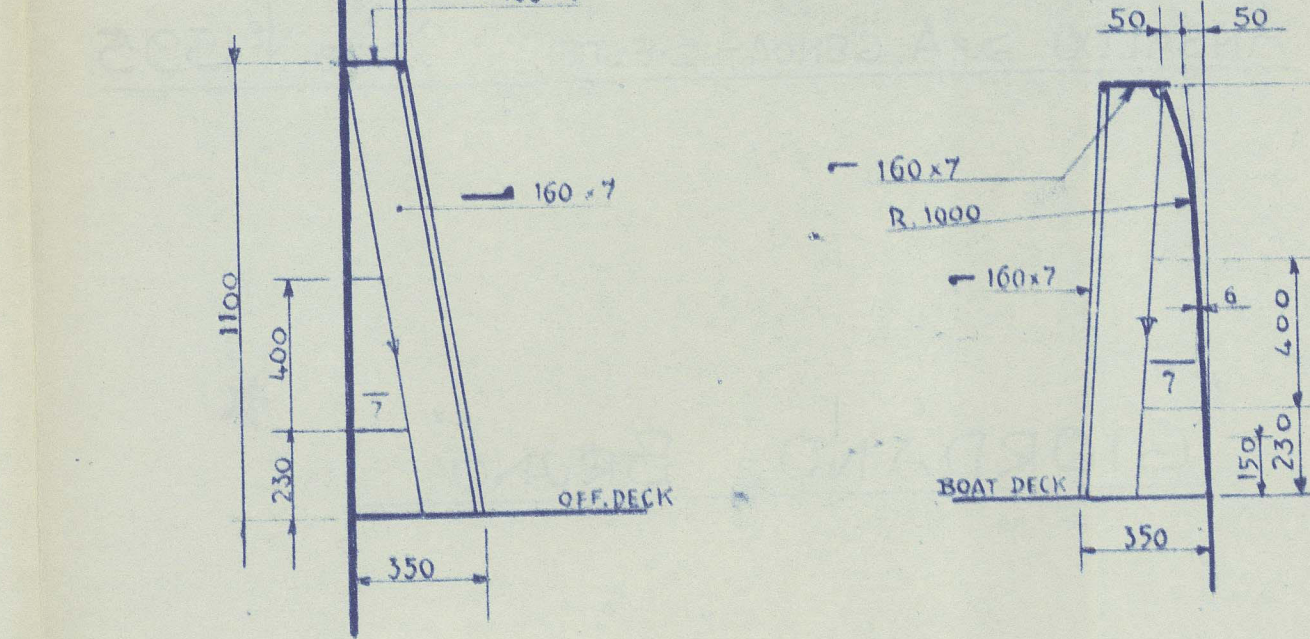


# SECTION E-E

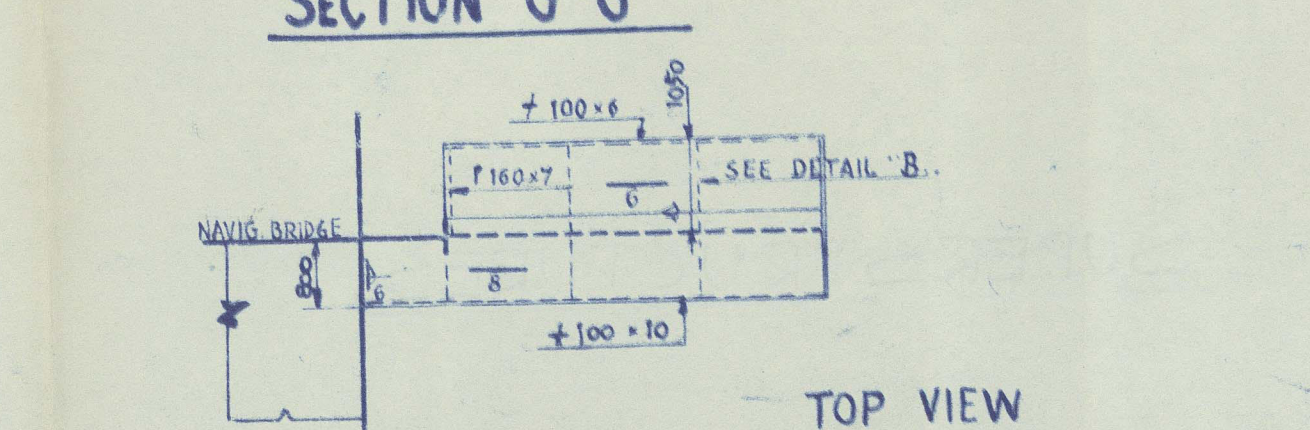
# SECTION F-F



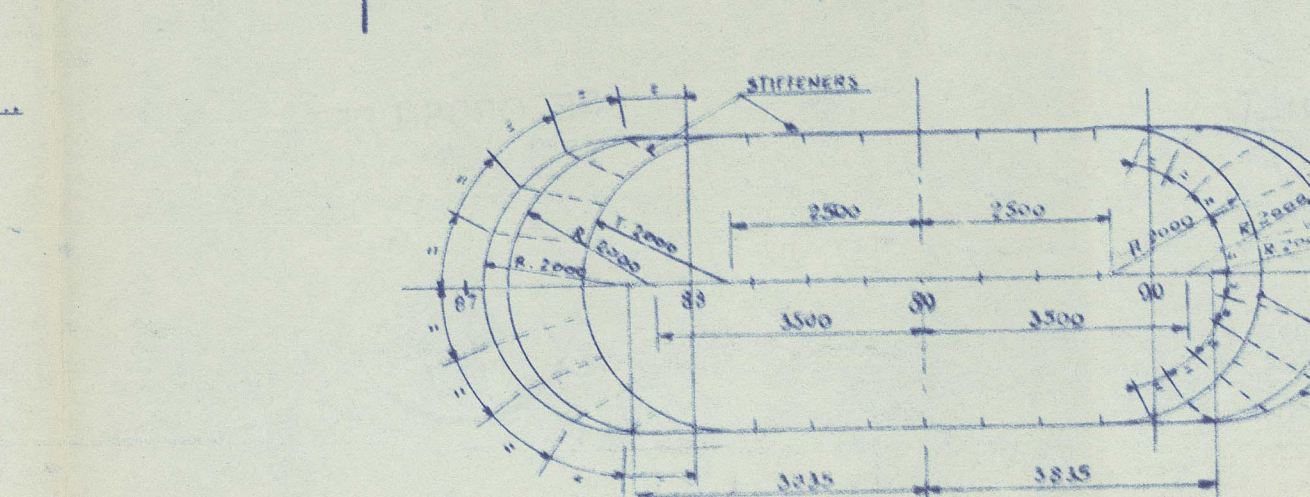
# DETAIL N-N



# SECTION G-G



# TOP VIEW



THICKNESS MARKED OFF BY BRACKETS (---) INDICATES DIAMAGNETIC MATERIAL (ALUMINUM ALLOY)

This plan has been verified with the approved plans to include any modifications and/or additions to the original approved arrangements made during construction which have been approved locally or as in accordance with or by standards equivalent to rule requirements.

REGISTERED  
GENOA  
18/5/64

APPROVATO DAL L.R. IN DATA 10-10-62  
APPROVED BY LLOYD'S REGISTER ON OCTOBER 10<sup>th</sup> 1962

MODIFICATO CON RICHIESTA DEL L.R. IN DATA 10-10-62	1	18/5/64
E CONE NUOVI PIANI GENERALI	2	18/5/64
MODIFICATO CON RICHIESTA DEL L.R. IN DATA 10-10-62	3	18/5/64
MODIFICATO CON RICHIESTA DEL L.R. IN DATA 10-10-62	4	18/5/64
MODIFICATO CON RICHIESTA DEL L.R. IN DATA 10-10-62	5	18/5/64
MODIFICATO CON RICHIESTA DEL L.R. IN DATA 10-10-62	6	18/5/64
MODIFICATO CON RICHIESTA DEL L.R. IN DATA 10-10-62	7	18/5/64
MODIFICATO CON RICHIESTA DEL L.R. IN DATA 10-10-62	8	18/5/64
MODIFICATO CON RICHIESTA DEL L.R. IN DATA 10-10-62	9	18/5/64
MODIFICATO CON RICHIESTA DEL L.R. IN DATA 10-10-62	10	18/5/64

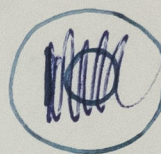
ANSALE G.A.  
CANTIERI NAVALI

- SCANTLING PLAN -  
SUPERSTRUCTURE..

01 60 00 00  
1593/0612



GENOA F.E. RPT N° 29129 1



ANSALDO S.p.A. GENOA - SESTRI. YARD N° 1595.

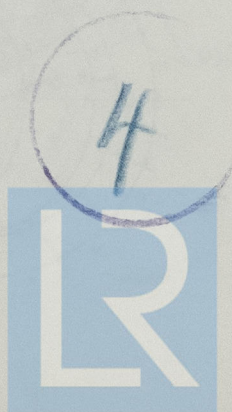
'GIORDANO BRUNO'



SUPERSTRUCTURES.

'AS. BUILT.'

RECORDS DEPT.  
LONDON



© 2021

Lloyd's Register  
Foundation

012078 012088 0303