

FOR CLASSIFICATION PURPOSES ONLY**LLOYD'S REGISTER OF SHIPPING**Index No. _____
(For London Office only.)

UNITED WITH THE BRITISH CORPORATION REGISTER

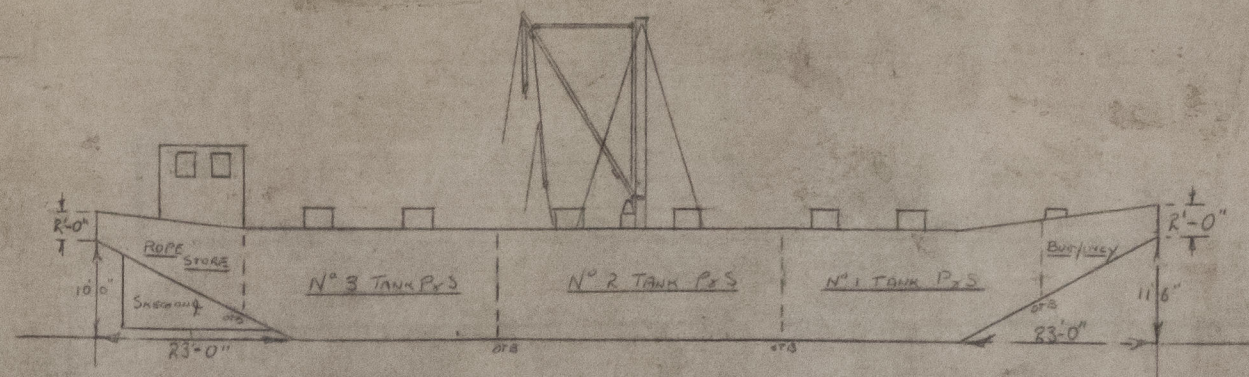
GLASGOW REPORT No. FBB.1242

SURVEYS FOR FREEBOARD.

(CONDITIONS OF ASSIGNMENT.)

Ship's Name AFPET 6 Port of Survey ARDROSSAN
 Official Number ✓ Surveyor's Signature W. M. Jenkins
 Nationality and Port of Registry SIERRA LEONE FREETOWN Date of Survey DURING CONSTRUCTION

Disposition and dimensions of superstructures, trunks, deckhouses, machinery casings and wood sheathing to be inserted in the diagrams and tabular statement:—



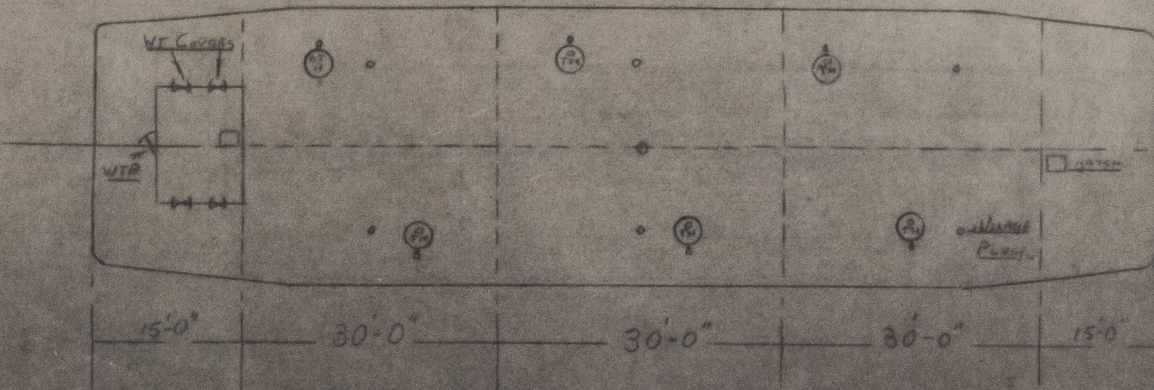
AFPET 6

DIMENSIONS—

LENGTH - 120'-0"

BREADTH - 33'-0"

DEPTH - 10'-6"

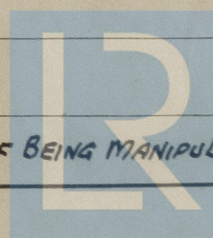


Particulars of Superstructures, Trunks, Casings, Deckhouses.

	Coaming	Plating	Stiffeners	Spacing	End Attachments of Stiffeners	Size of Openings	Height of Sills	Height, Beam to Beam
Poop Bulkhead ...	NONE							
Raised Quarter Deck Bulkhead	NONE							
Bridge, After Bulkhead ...	NONE							
Bridge, Forward Bulkhead...	NONE							
Forecastle Bulkhead...	NONE							
Trunk, Aft ...	NONE							
Trunk, Forward ...	NONE							
Exposed Machinery Casings on Free-board or Raised Quarter Decks	NONE							
Exposed Machinery Casings on Super-structure Decks ...	NONE							
Machinery Casings within Superstructures not fitted with Class I Closing Appliances ...	NONE							
Deckhouses and Pump Room Entrances	3/16	3/16	2 1/2, 2 1/2, 1/4	2'-0" / 2'-5"	BRACKETS AT TOP / WELDED AT BOT.	4'-6" x 2'-2"	18"	7'-6" FWD / 6'-6" AFT.

Particulars of Closing Appliances (state if capable of being manipulated from both sides).

Poop Bulkhead ...	NONE
Raised Quarter Deck Bulkhead	NONE
Bridge, After Bulkhead ...	NONE
Bridge, Forward Bulkhead ...	NONE
Forecastle Bulkhead ...	NONE
Exposed Machinery Casings on Free-board or Raised Quarter Decks	NONE
Exposed Machinery Casings on Super-structure Decks ...	NONE
Machinery Casings within Superstructures not fitted with Class I Closing Appliances ...	NONE
Deckhouses and Pump Room Entrances	W.T. MECHANS STEEL HINGED DOOR 6 TOGGLES CAPABLE OF BEING MANIPULATED FROM BOTH SIDES.



© 2021

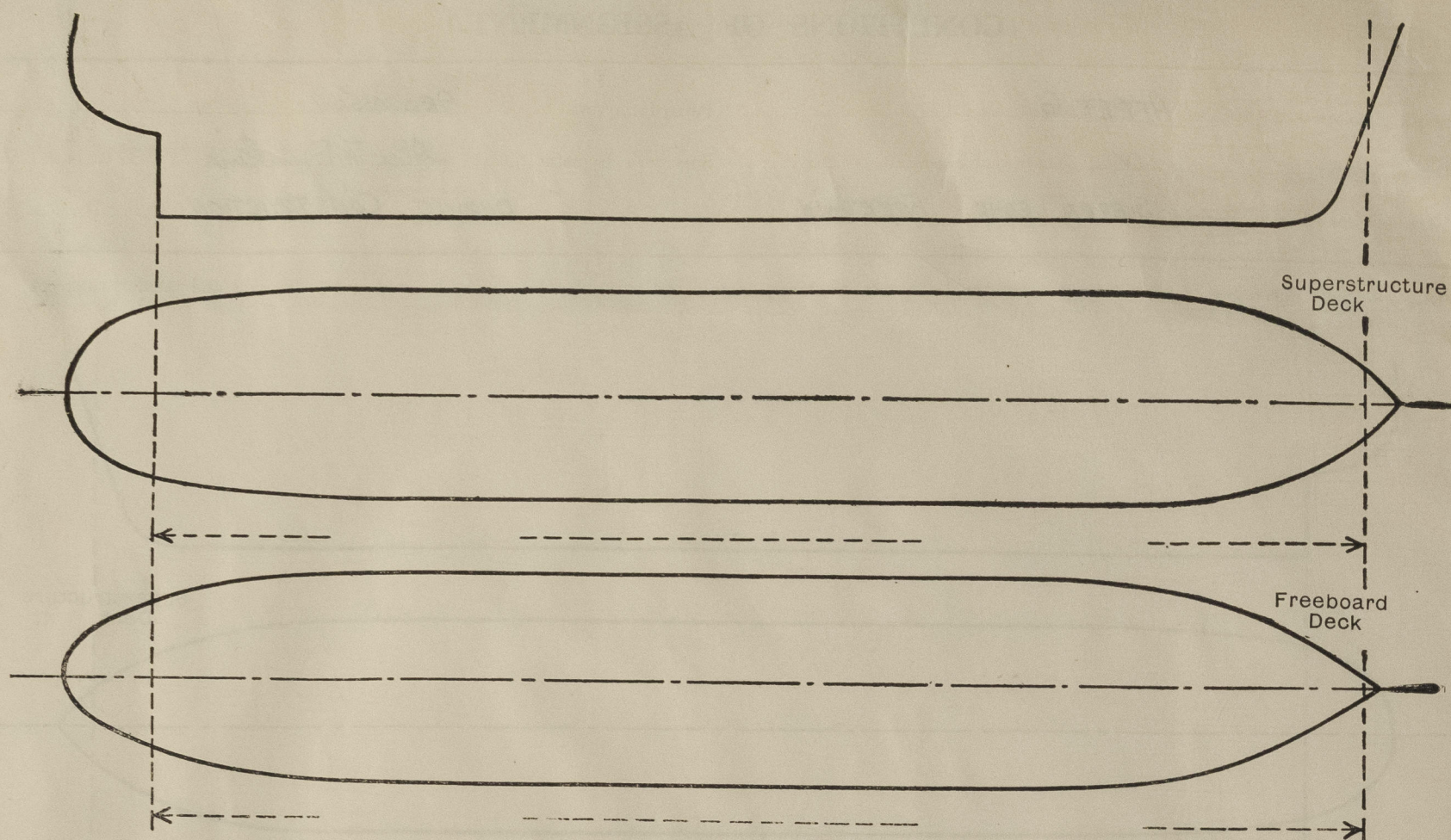
Lloyd's Register

Foundation

012047-012057-497

PARTICULARS OF PROTECTION TO OPENINGS, ETC.

The following diagrams should be used to indicate the positions of cargo and coaling hatchways, gangway, cargo and coaling ports, side scuttles, scuppers, ventilators, companionways, etc., which would affect the seaworthiness of the ship :—



Particulars of filley, funnel and ventilator coamings, engine room skylight and other openings in machinery casing tops and their means of closing :—
NONE

Particulars of Flush Bunker Scuttles :— *NONE*

Particulars of Companionways :—
(including those incorporated in deckhouses and masthouses) *NONE.*

Particulars of Ventilators in exposed positions on freeboard and superstructure decks :— *ON UPPER DECK. TWO, 2 1/2" DIAM. GOOSENECK VENTILATORS TO FORE PEAK AND TWO TO AFT PEAK. 36" HIGH.*

Particulars of Air Pipes in exposed positions on freeboard, raised quarter, or superstructure decks :— *NONE.*

Particulars of Gangway Cargo and Coaling Ports :— *NONE*

Particulars of Scuppers and Sanitary Discharge Pipes :— *ONE HAND PUMP TO EACH OF FORE PEAK AND AFT PEAK.*

Particulars of Side Scuttles & Deadlights :— *NONE*

Vertical distance of Sill of lowest Side Scuttle above top of keel ✓
Distance from amidships to centre of lowest Side Scuttle ✓

Particulars of Guard Rails & Bulwarks :— *NONE.*

Particulars of Gangways, Lifelines, etc. :— *NONE.*

Particulars of Freeing Arrangements. *NONE.*

	Length of Bulwark	Height of Bulwark	Size of Freeing Ports	Number each side	Area each side	Rule area each side
After Well						
Forward Well						

State position of each freeing port { After Well :—
(F. and A. position and height above deck edge) { Forward Well :—

State whether the freeing ports are fitted with shutters, bars, or rails, and give particulars of such :—

Additional area where sheer is less than standard.

PARTICULARS OF PROTECTION TO OPENINGS, ETC.

HATCHWAYS ON FREEBOARD AND SUPERSTRUCTURE DECKS.									
← EXPOSED ON UPPER DECK →									
NOT EXPOSED ON UPPER DECK									
Description of Hatchway ...									
Dimensions of Hatchway ...									
COAMINGS									
Height above Deck ...		2' 6"		2 1/2'		9"			
Thickness ...		5/16"		5/16"		1/4"			
Stiffeners ...		NONE		NONE		NONE			
Brackets, Stays ...		NONE		NONE		NONE			
HATCH BEAMS									
Number ...		NONE		✓		✓			
Spacing ...									
Scantling and Sketch ...									
Bearing Surface ...									
FORE AND AFTERS									
Number ...		NONE		✓		✓			
Spacing ...									
Unsupported Lengths ...									
Scantling* and Sketch ...									
Bearing Surface ...									
HATCH COVERS									
Material ...		STEEL		STEEL		STEEL			
Thickness ...		1/4"		5/16"		1/4"			
How fitted ...		O.T. HINGED		W.T. BOLTED		W.T. HINGED			
Bearing Surface ...		ON PACKING		5 TOGGLES		2 TOGGLES			
Spacing of Cleats ...									
Number of Tarpaulins ...									

- *Are wood fore and afters steel shod at all bearing surfaces? ✓
- Are battens and wedges efficient and in good condition? ✓
- Are tarpaulins in good condition and in accordance with rule requirements? ✓
- Are lashings provided in accordance with rule requirements? ✓
- Are wood covers fitted with galvanised end bands? ✓

Particulars of any special features:— (Timber Deck-cargo Fittings, Skylights, Sewage Systems, Ash Ejectors, Rubbish Shoots, etc.) ✓



© 2021

Lloyd's Register Foundation