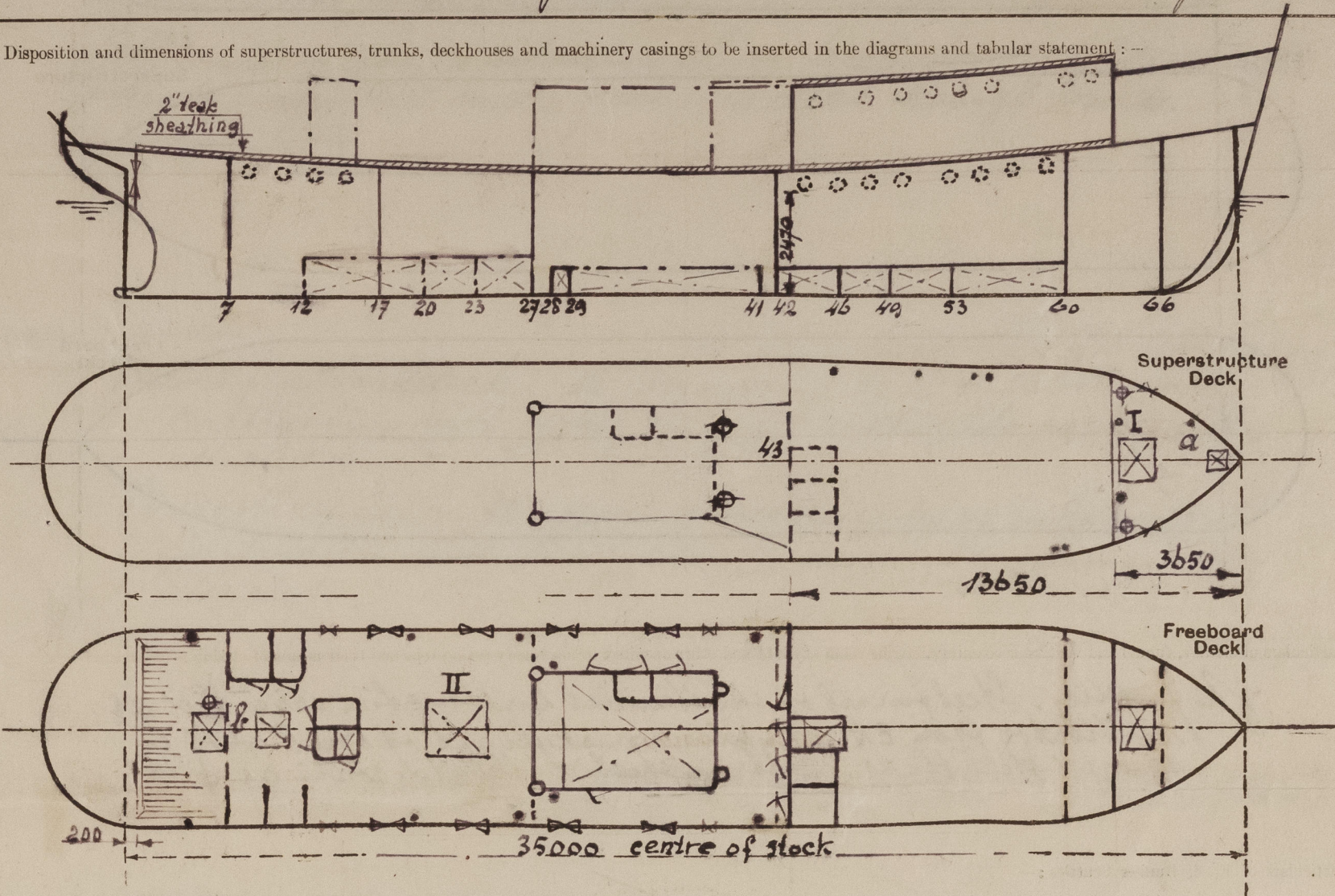


Lloyd's Register of Shipping.  
SURVEYS FOR FREEBOARD.  
(CONDITIONS OF ASSIGNMENT.)

12 36064

Ship's Name "BLIBIS" Port of Survey Rotterdam  
Official Number \_\_\_\_\_ Surveyor's Signature W. J. J. J.  
Nationality and Port of Registry Indonesian ; Djakarta Date of Survey while building

Disposition and dimensions of superstructures, trunks, deckhouses and machinery casings to be inserted in the diagrams and tabular statement : --



Particulars of Superstructures, Trunks, Casings, Deckhouses.								
	Coaming mm	Plating mm	Stiffeners mm	Spacing mm	End Attachments of Stiffeners	Size of Openings mm	Height of Sills mm	Height of Casings mm
Poop Bulkhead ... ..								
Raised Quarter Deck Bulkhead ...								
Bridge, After Bulkhead ... ..	75	55	7.65 x 50 x 6	550	none	1 x 1400 x 630 1 x 1400 x 600	460 610	2100
Bridge, Forward Bulkhead ... ..						2 x 1400 x 570	460	
Forecastle Bulkhead ... ..	—	75	7.65 x 50 x 65	550	none	none	—	
Trunk, Aft ... ..								above free deck
Trunk, Forward ... ..								
Exposed Machinery Casings on Free- board or Raised Quarter Decks ...	75	55	7.65 x 50 x 75	500	Knees on top	1400 x 600	610	2100
Exposed Machinery Casings on Super- structure Decks ... ..								
Machinery Casings within Superstruc- tures not fitted with Class I Closing Appliances ... ..								
Deckhouses on Flush Deck Ships ...								

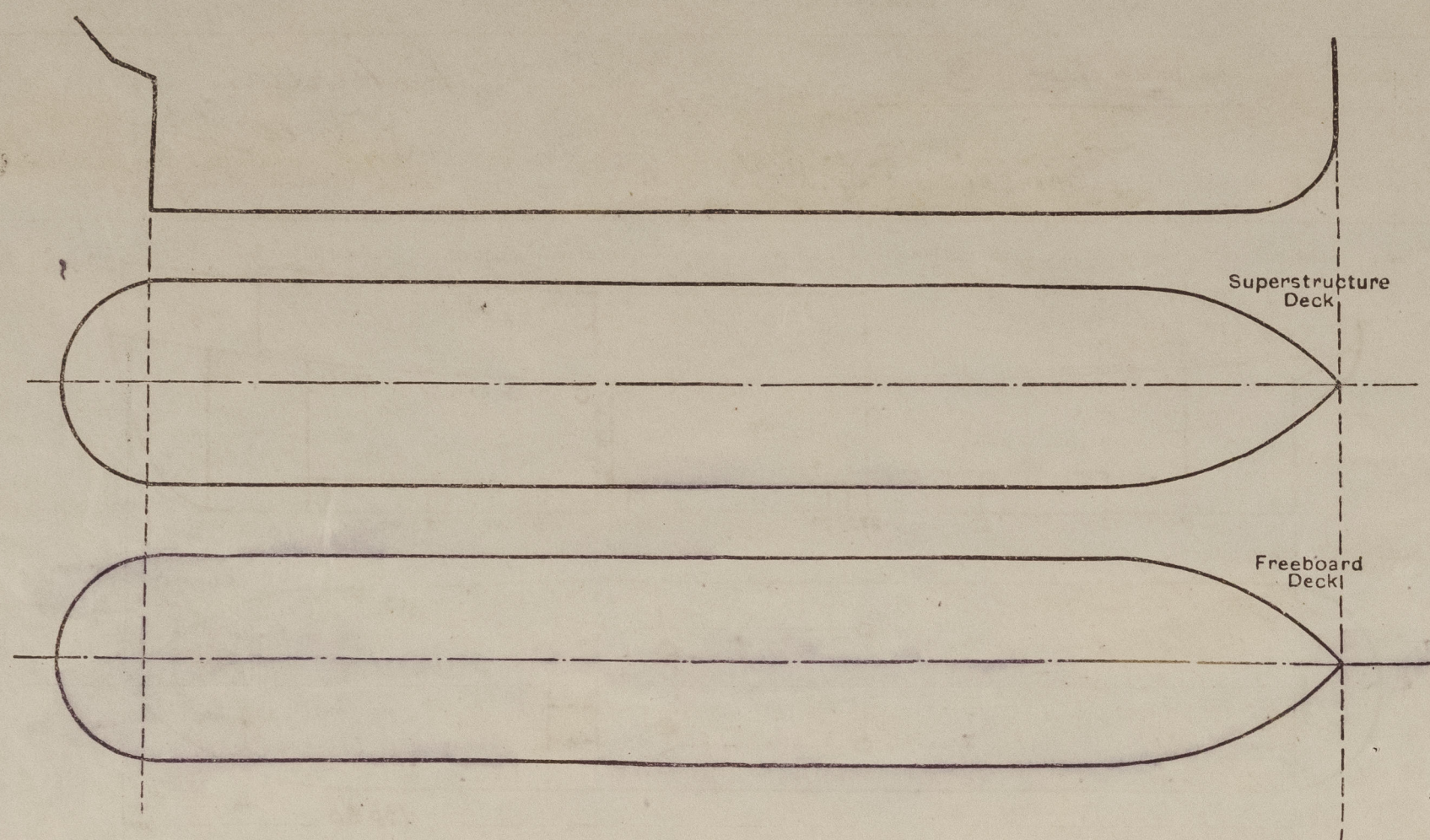
Particulars of Closing Appliances (state if capable of being manipulated from both sides).	
Poop Bulkhead ... ..	
Raised Quarter Deck Bulkhead ...	
Bridge, After Bulkhead ... ..	
Bridge, Forward Bulkhead ... ..	
Forecastle Bulkhead ... ..	
Exposed Machinery Casings on Free- board or Raised Quarter Decks ...	
Exposed Machinery Casings on Super- structure Decks ... ..	
Machinery Casings within Superstruc- tures not fitted with Class I Closing Appliances ... ..	
Deckhouses on Flush Deck Ships ...	

[operable from both sides.  
2 wood doors of substantial construction, hinged and  
2 watertight steel hinged door operable from both sides.  
2 watertight steel hinged doors operable from both sides



# PARTICULARS OF PROTECTION TO OPENINGS, ETC.

The following diagrams should be used to indicate the positions of cargo and coaling hatchways, gangway, cargo and coaling ports, ventilators, companionways, etc., which would affect the seaworthiness of the ship:—



Particulars of fiddle, funnel and ventilator coamings, engine room skylight and other openings in machinery casing tops and their means of closing:—

No fiddle. Steel funnel of substantial construction arranged as ventilator from E.R. Engine room skylight of steel with 6 hinged steel flaps. 2 strong steel ventilator coamings  $\phi 18"$ .

Particulars of Flush Bunker Scuttles:—

Particulars of Companionways:—

Access to accommodation forward in forecastle (door in fore bld.)

Access to accommodation aft in strong steel deckhouse with w.t. steel hinged door, operable from both side; sill 610 mm.

Particulars of Ventilators in exposed positions on freeboard and superstructure decks:—

On superstruct  $\phi 12"$ , height 915 mm; 5 goosenecks  $\phi 3"$ , height 460 mm

On freeboard deck: 2 x  $\phi 10"$ , extended far above deckhouse, efficiently supported.

1 x  $\phi 12"$ , height 915 mm.

1 skylight, steel with 2 steel watertight hinged flaps, each with 2 dogs. Sill height 680 mm.

Ventilators and goosenecks provided with wooden plugs and canvas covers.

Particulars of Air Pipes in exposed positions on freeboard, raised quarter, or superstructure decks:—

Superstructure deck: 2 x height 460 mm

2 x " 490 mm

Freeboard deck: 2 x " 1050 mm, supported.

2 x " 1950 mm, "

6 x " 915 mm

Provided with wood plugs, on oil fuel tanks with patent gas caps and canvas.

Particulars of Gangway Cargo and Coaling Ports:—

Blibis.

BL1315

Particulars of Scuppers and Sanitary Discharge Pipes:—

Superstructure: 2 x  $\phi 2\frac{1}{2}"$  from sunk part led overboard under freeboard deck

2 x  $\phi 2\frac{1}{2}"$  from aft part of bridge deck led through aft bld to freeboard deck.

Freeboard deck: 8 x  $\phi 2\frac{1}{2}"$  led overboard under freeboard deck.

All sanitary spaces situated above freeboard deck. Discharges leading overboard under freeboard deck through bronze SD NR valves. with indication

Particulars of Side Scuttles:—

Below freeboard deck: 12" non opening type of substantial construction with strong hinged deadlights, permanently attached.

Forecastle space: 12" opening side scuttle of substantial construction with strong hinged deadlights, permanently attached.

Vertical distance of Sill of lowest Side Scuttle above top of keel

2470 mm (situated 4400 mm forward of  $\frac{1}{2}L$ )

Particulars of Guard Rails:—

Sunk part of fore: 375 mm bulwark + rail (1200) till height 900 mm.

Forecastle aft: guardrail of 3 rods, height 975 mm.

Freeboard deck: Strong steel bulwark, effectively stiffened and supported.

Particulars of Gangways, Lifelines, etc.:—

Can be rigged on freeboard deck.

## Particulars of Freeing Arrangements.

	Length of Bulwark m	Height of Bulwark mm	Size of Freeing Ports	Number each side	Area each side m <sup>2</sup>	Rule area each side
After Well ...	22.65	1,100	740 x 400	4	1.136	1.375
	21.35	375 + 2 rail total height 1100	200 x 150	2	0.185	
Forward Well ...	3.65	1100	150 x 100	1	0.013	.768

State position of each freeing port ... (After Well:— 200 & 300 mm } for position see sketch  
(F. and A. position and height above deck edge) (Forward Well:— 140 mm

State whether the freeing ports are fitted with shutters, bars, or rails, and give particulars of such:— shutters in large ports.

Additional area where sheer is less than standard.



# PARTICULARS OF PROTECTION TO OPENINGS, ETC.

		HATCHWAYS ON FREEBOARD AND SUPERSTRUCTURE DECKS.					
		forecastle deck		freeboard deck			
Description of Hatchway		α	I	II	β		
Dimensions of Hatchway		440 x 530	1200 x 1200	2000 x 1800	885 x 1000		
COAMINGS	Height above Deck	130 mm	610 mm	770 mm	460 mm		
	Thickness	7 mm	7 mm	7.5 mm	7 mm		
	Stiffeners	—	—	—	—		
	Brackets, Stays	—	—	7 130 x 65 x 10 none	—		
HATCH BEAMS	Number						
	Spacing						
FORE AND AFTERS	Number			one			
	Spacing			900 mm			
HATCH COVERS	Material	steel	steel	teak	steel		
	Thickness	65 mm	65 mm	60 mm	65 mm		
HATCH COVERS	How fitted	hinged	hinged	transversely	hinged		
	Bearing Surface			80 mm			
Spacing of Cleats		4 dogs	12 dogs	510 mm	8 dogs		
Number of Tarpaulins		wt	wt	two	wt		
*Are wood fore and afters steel shod at all bearing surfaces?				yes			
Are battens and wedges efficient and in good condition?				yes			
Are tarpaulins in good condition and in accordance with rule requirements?				yes			
Are lashings provided in accordance with rule requirements?				yes			

Particulars of any special features:— In N° II hatch coaming 6 bronze scuttles φ 12". non opening type with strong hinged deadlights, permanently attached.

Endorsement at first survey and at surveys for renewal of Certificate:—

The fittings and appliances are in accordance with the particulars shown on this form (or as now modified) and are in good condition.



© 2021

Lloyd's Register Foundation