

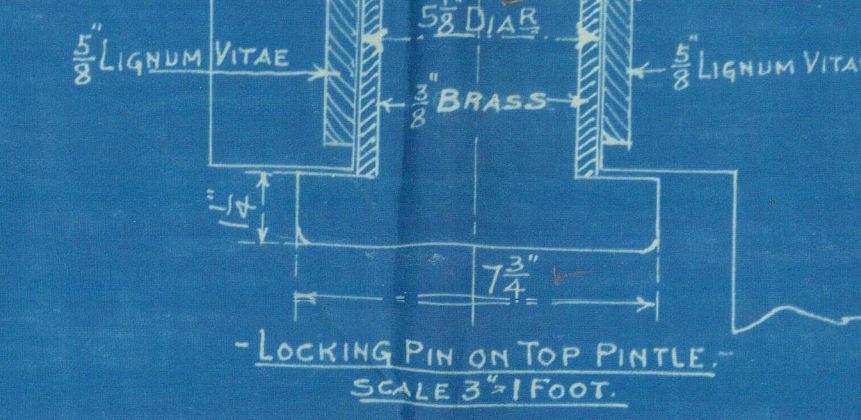
# RUDDER & SCREW FRAME, ETC.

SCALE 1/2" = 1' FOOT  
SCREW FRAME (FORGED STEEL)  
RUDDER

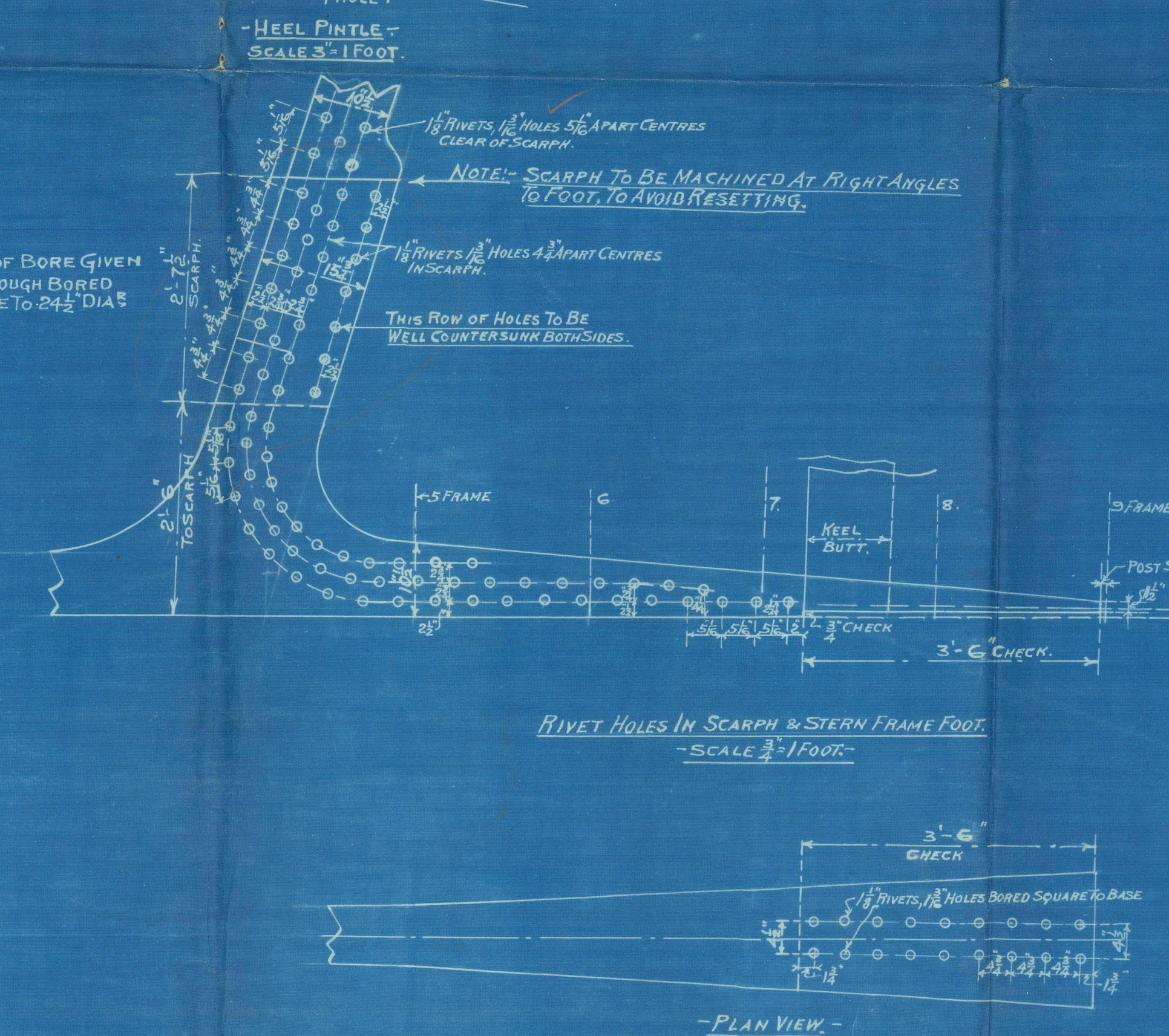
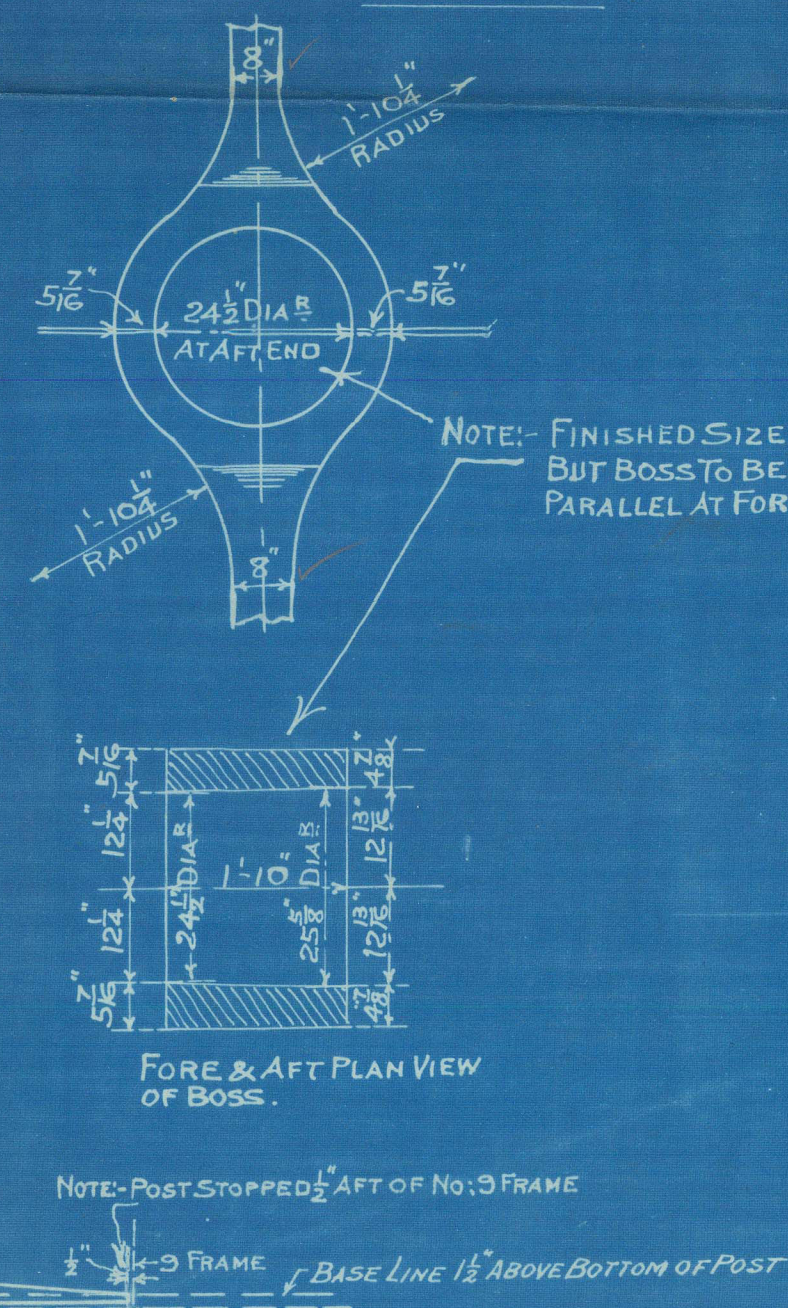
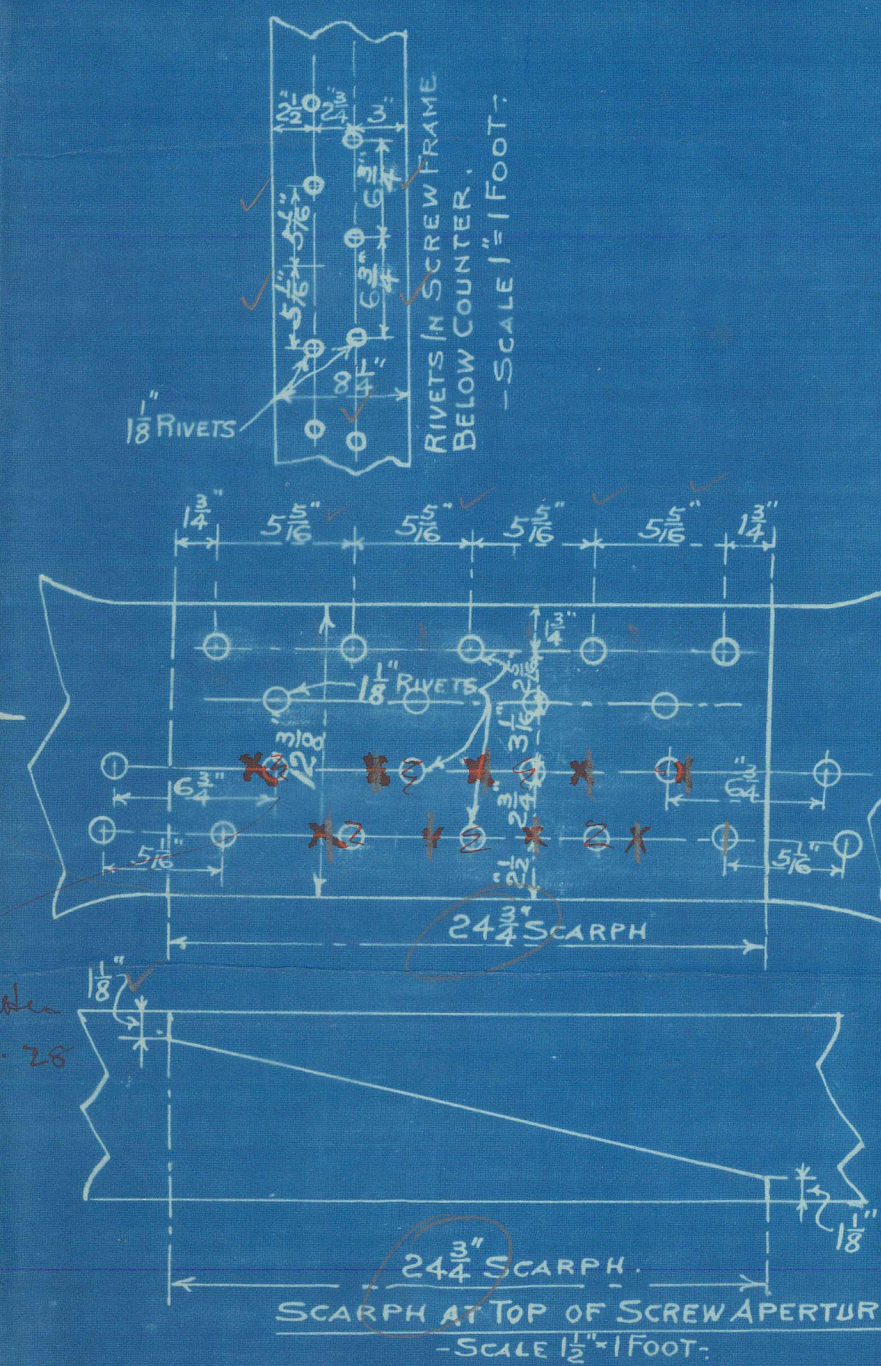
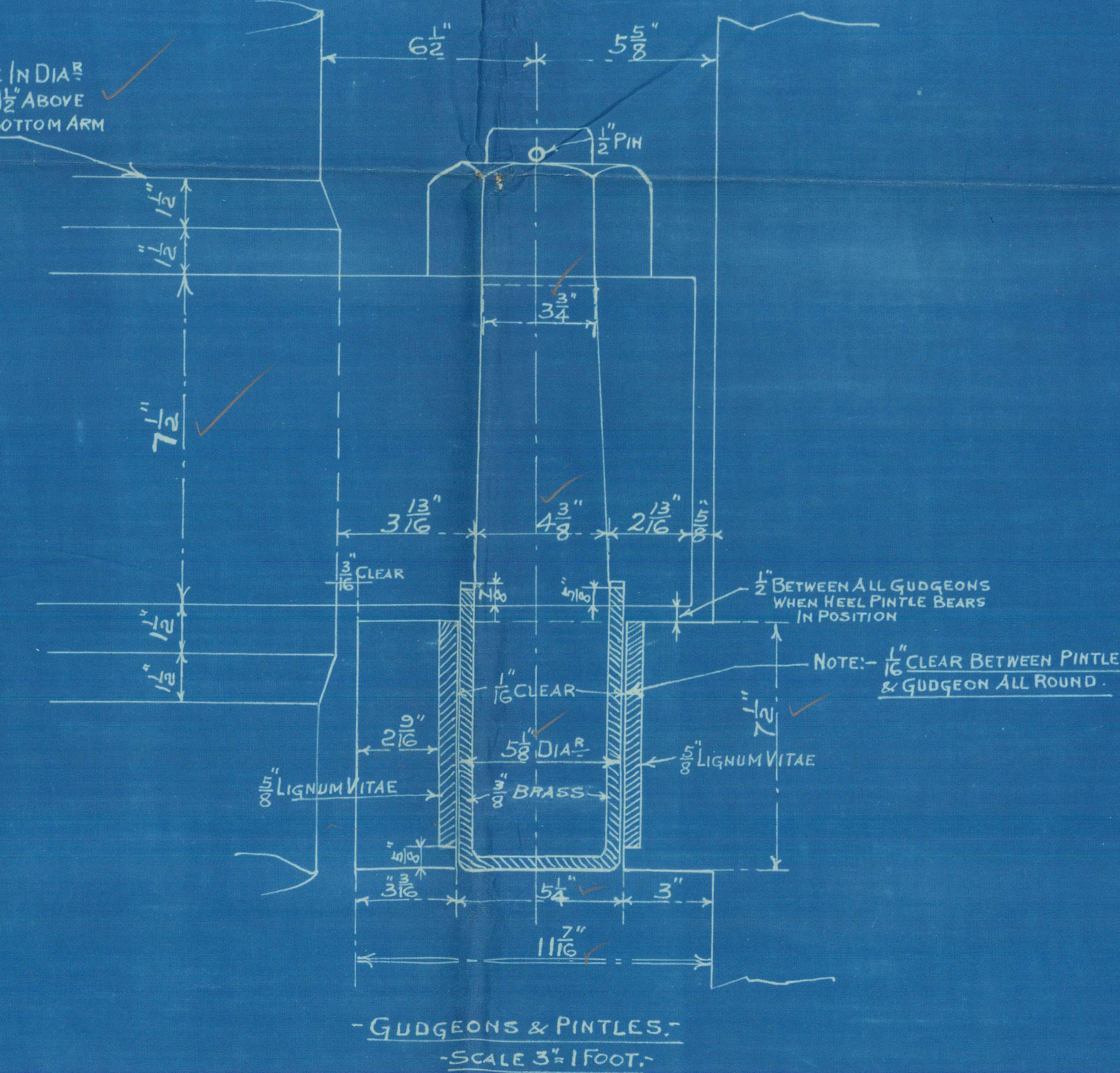
SPEED 11 KNOTS (FULL)

LENGTH 400 FT.  
DRAFT 24'-11"

25'-8" V. 24'-11"



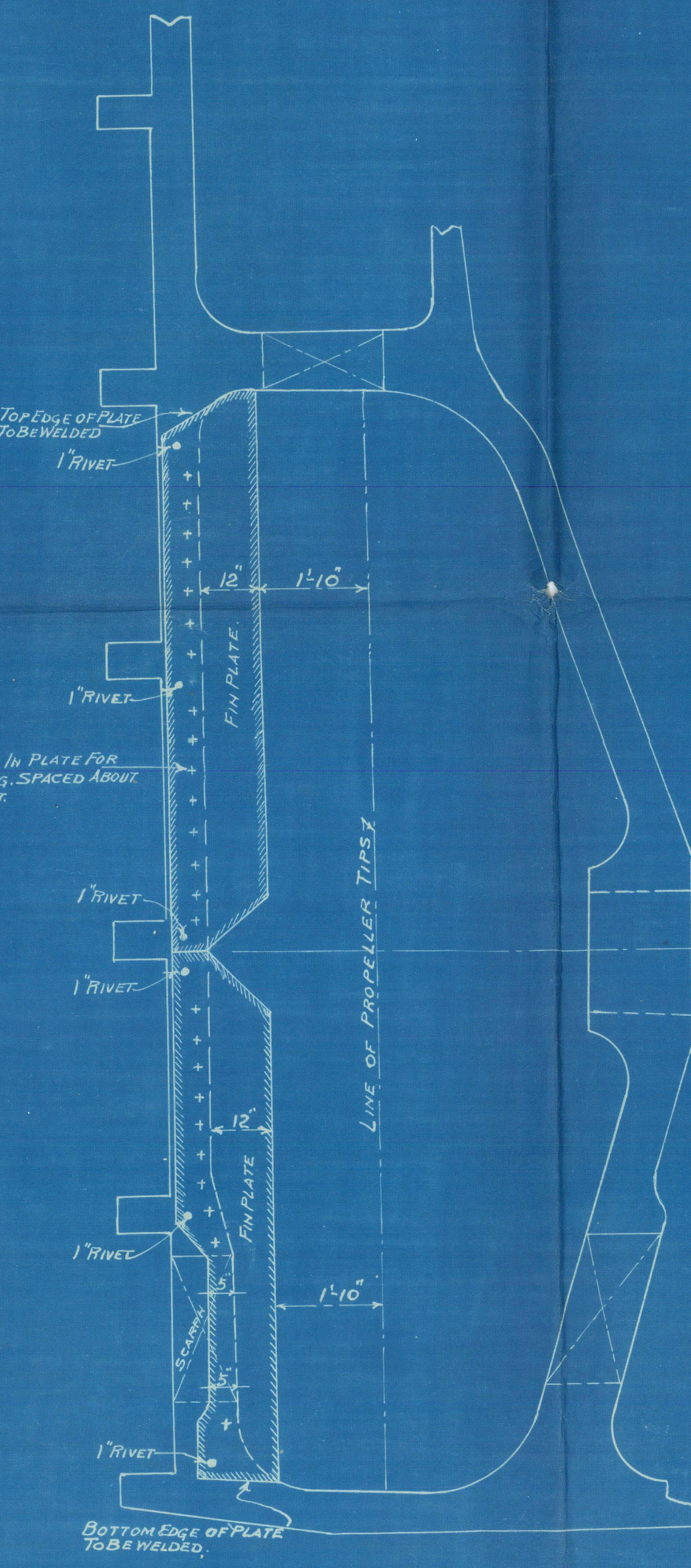
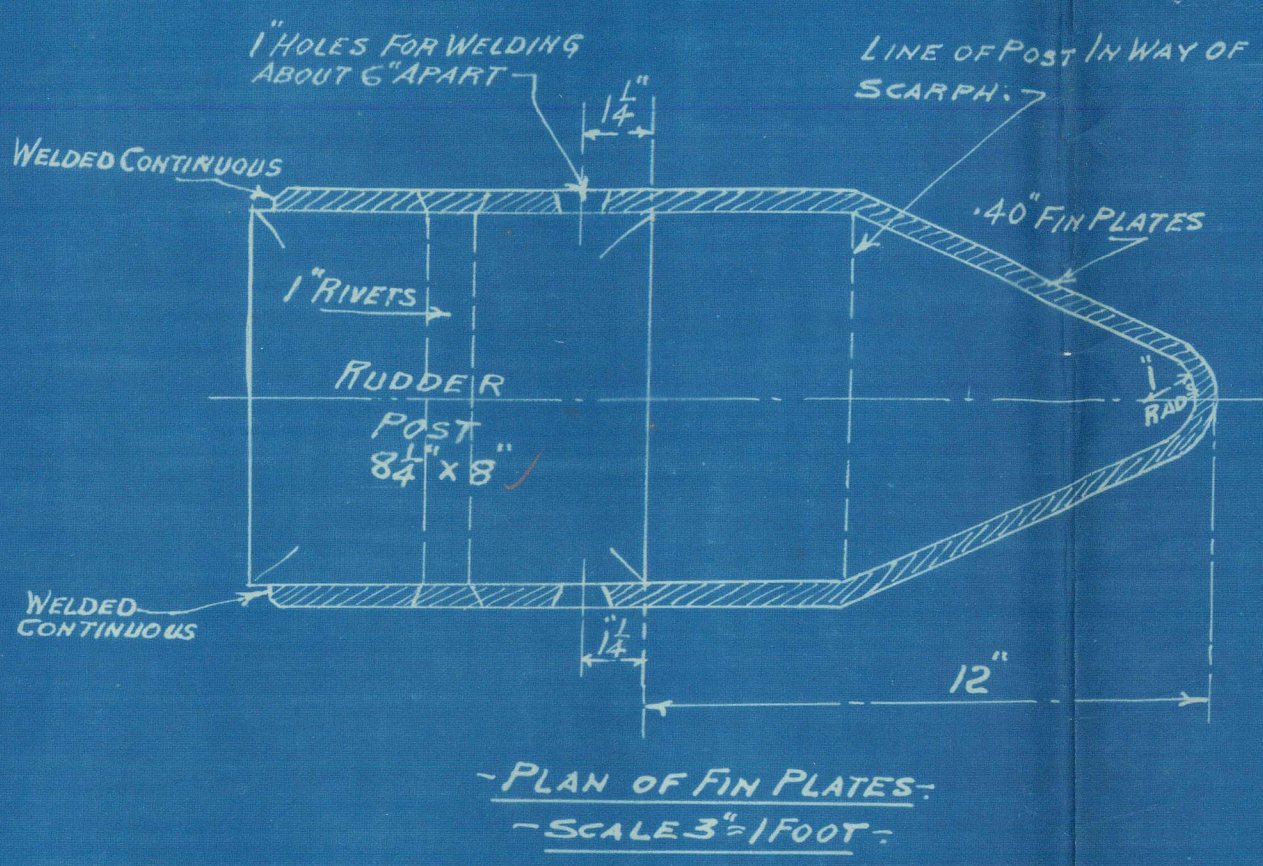
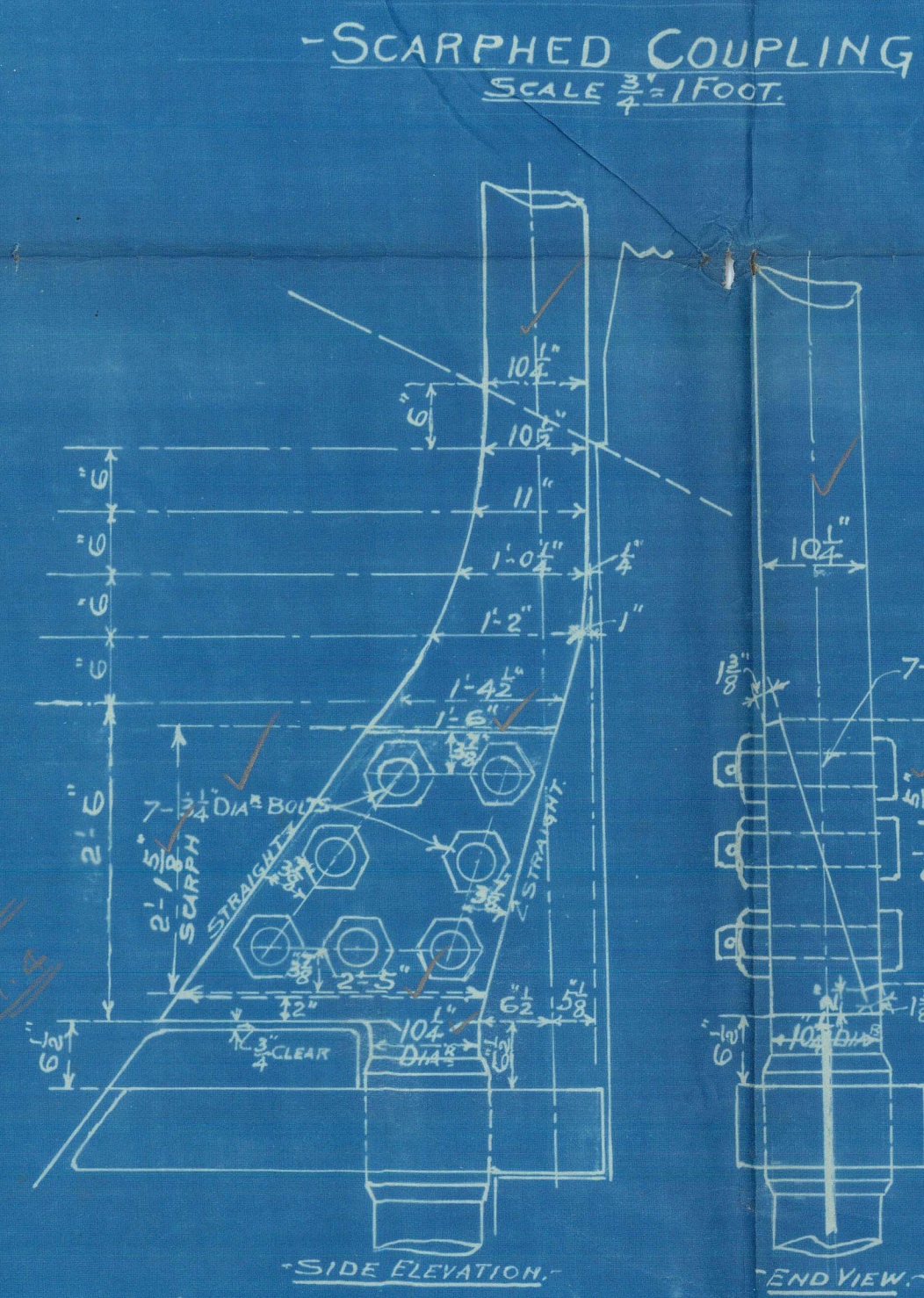
NOTE: RUDDER POST TO BE 1" MORE IN DIA. AT EACH ARM FOR 1/2" DEEP FROM 1/2" ABOVE TOP OF ARM FORSTAYWAY, EXCEPT BOTTOM ARM WHICH IS 3" DEEP.



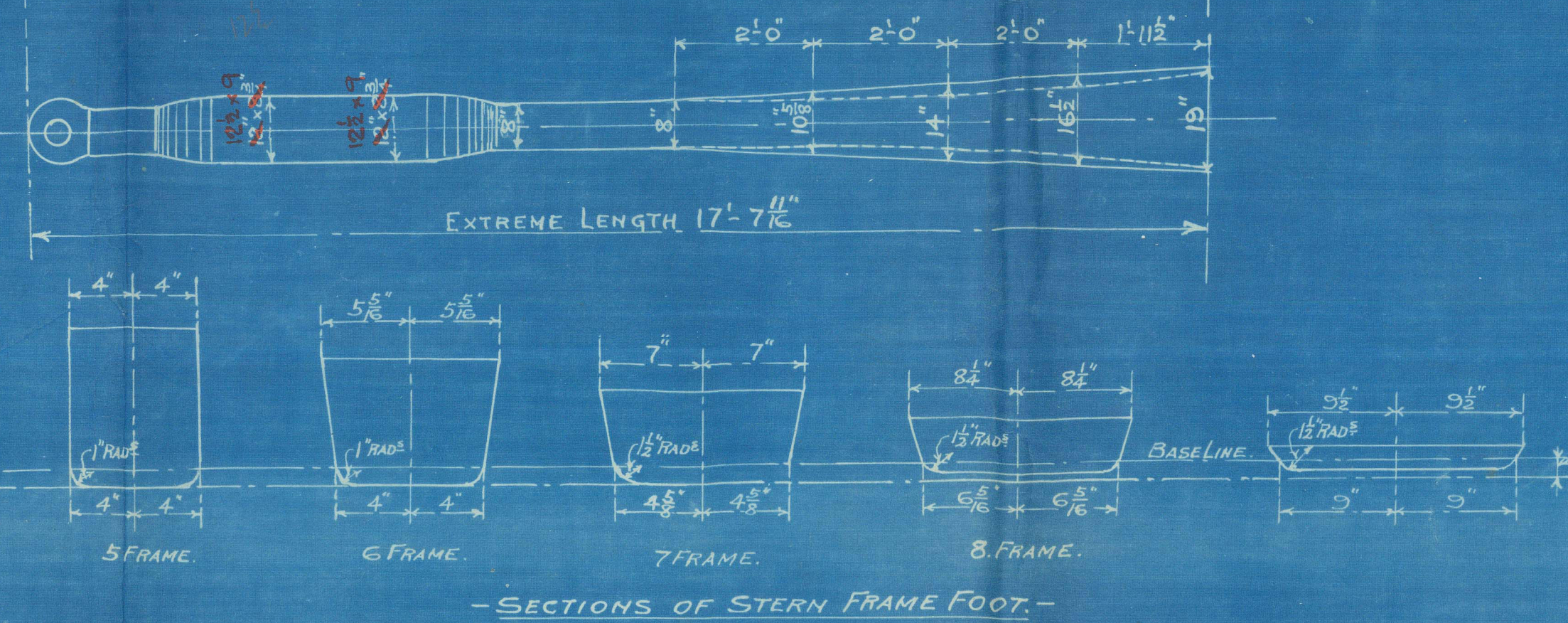
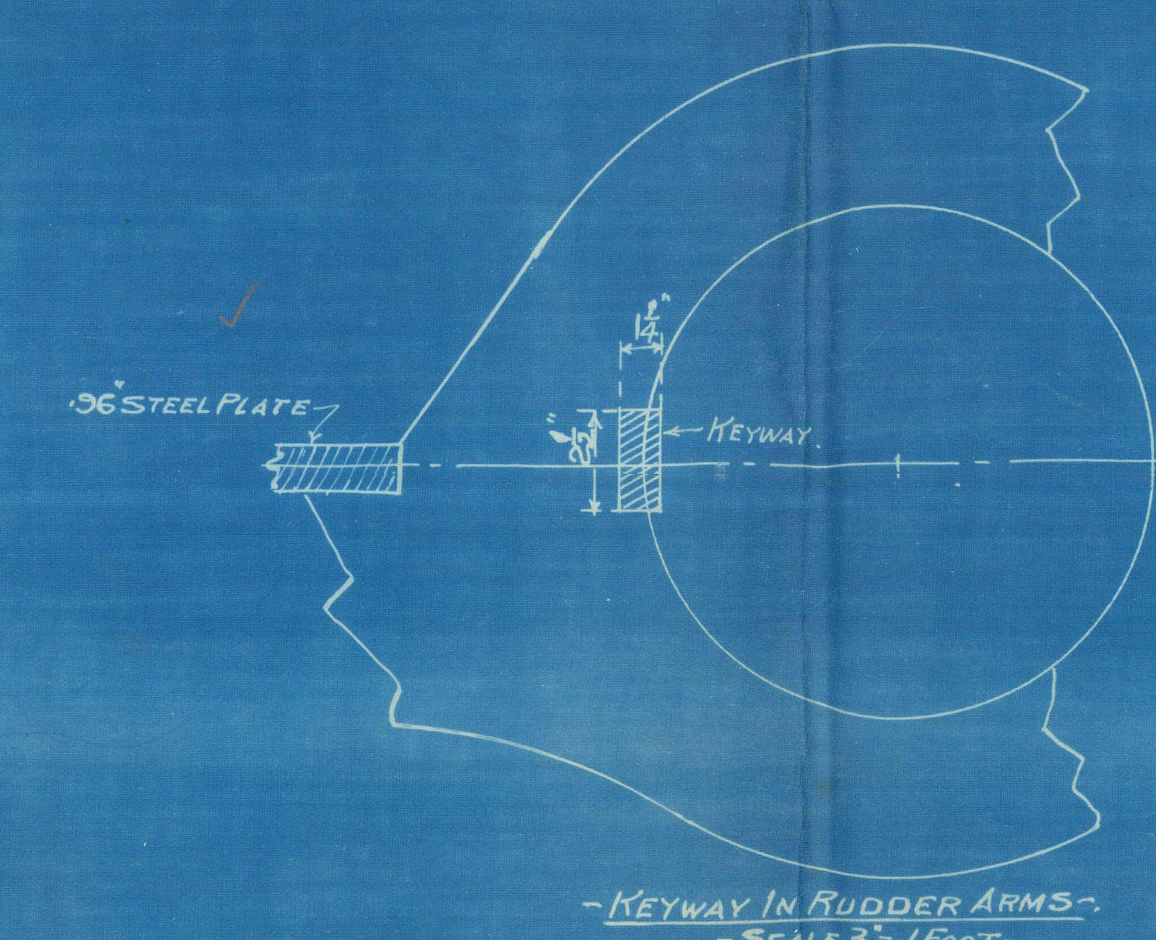
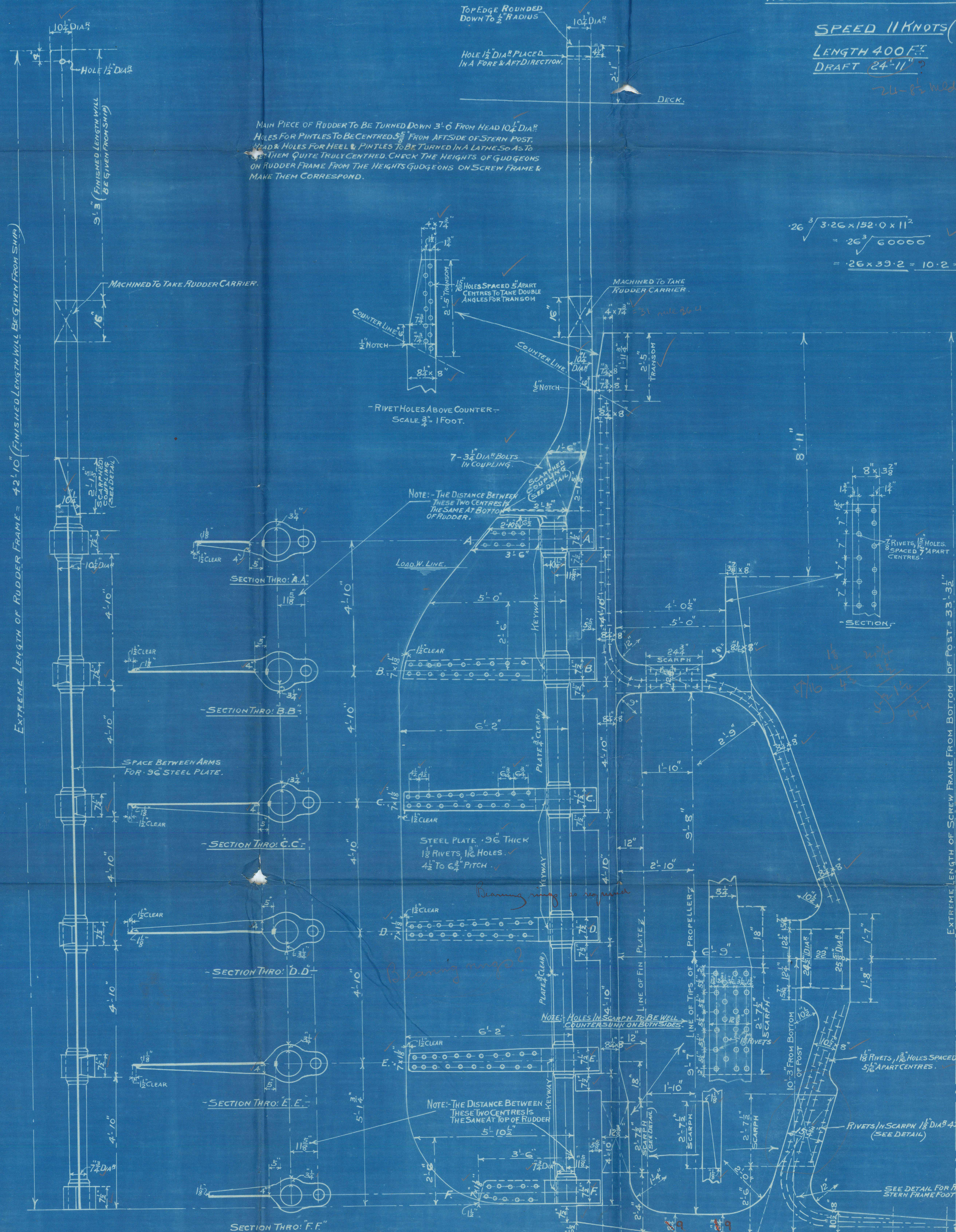
PLAN NO. 15  
DRAWN BY A.B.B.  
CHECKED BY

W. GRAY & CO. LIMITED  
1914  
WEST HARTLEPOOL

1018-19



1018-19



H

TRANSFERRED TO:  
L. R. SYSTEM

F.S. Rudder & Screw Frame.

Wm Gray & Co. Ltd.

N<sup>os</sup> 1018 - 1019 - 0 - 1 - 2 - 3 - 1035

17. 11. 28

1018. New Westminster City

1019. Prince Rupert City

1020. Tacoma City

1021. Vernon City

1022. Victoria City

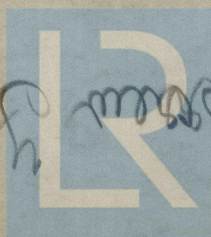
1023. Bradglen.

1035. Bradburn.

base

Gray's 1018/9

012003-012010-0040



© 2021

Lloyd's Register  
Foundation