

Lloyd's Register of Shipping.

SURVEYS FOR FREEBOARD.

(CONDITIONS OF ASSIGNMENT.)

Ship's Name "SAUCY."

Port of Survey HULL.

Official Number ✓

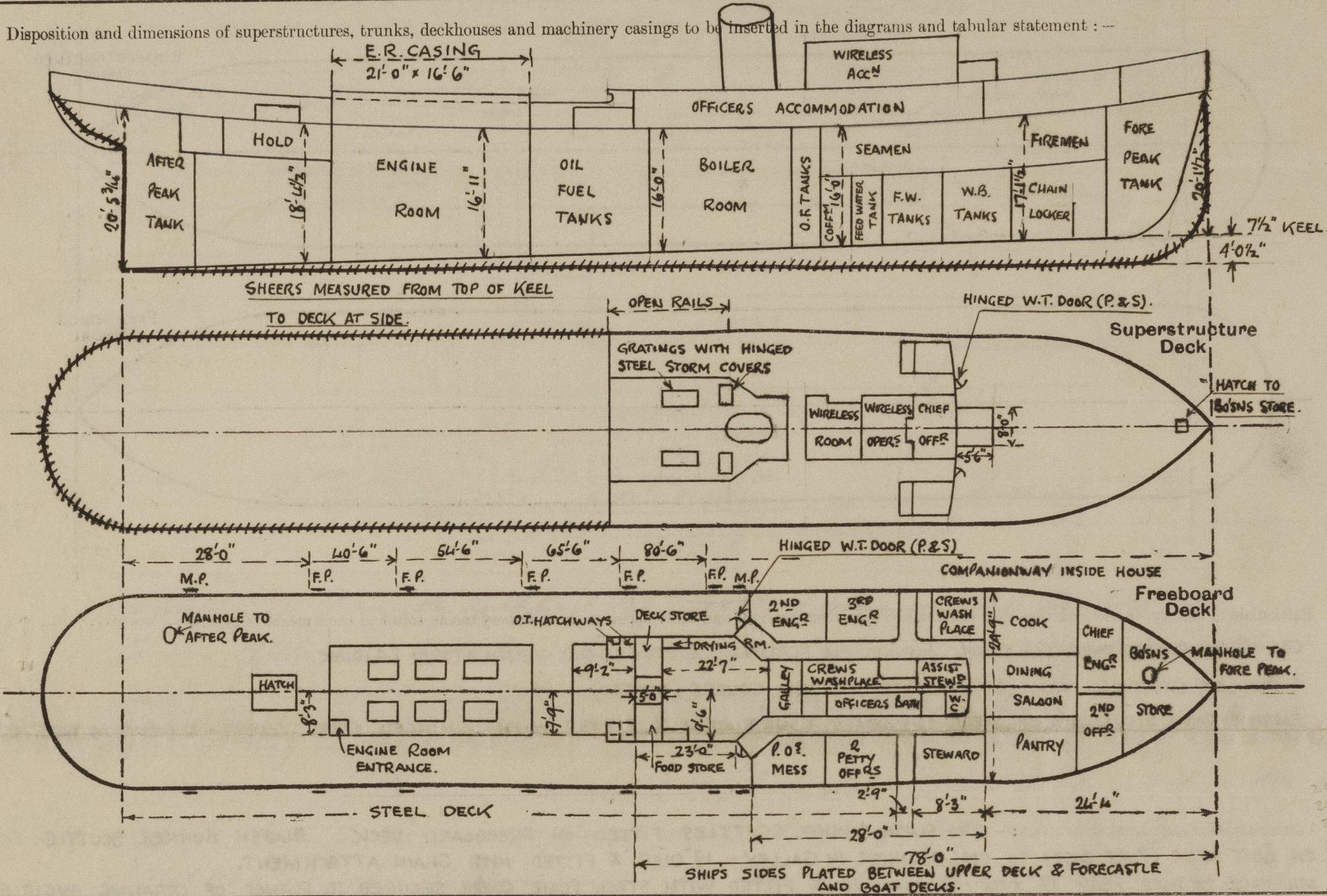
Surveyor's Signature J. Macleod

Nationality and Port of Registry BRITISH - ✓

Date of Survey

During construction

Disposition and dimensions of superstructures, trunks, deckhouses and machinery casings to be inserted in the diagrams and tabular statement:—



Particulars of Superstructures, Trunks, Casings, Deckhouses.								
	Coaming	Plating	Stiffeners	Spacing	End Attachments of Stiffeners	Size of Openings	Height of Sills	Height of Casings
Poop Bulkhead	✓							
Raised Quarter Deck Bulkhead ...	✓							
Bridge, After Bulkhead	✓							
Bridge, Forward Bulkhead	✓							
Forecastle Bulkhead ... FRAME N ^o 65	✓	25	2 1/2" x 2 1/2" x 25"	30"	NONE	4'10" x 1'9"	15"	7'3"
Trunk, Aft (FRAME N ^{os} 31-36)...	30	30	3" x 2 1/2" x 30"	30"	NONE	4 O.T. HATCHWAYS ON TOP OF TRUNK	✓	3'0"
Trunk, Forward	✓							
Exposed Machinery Casings on Freeboard or Raised Quarter Deck ...	18" x 32"	28	3 1/2" x 2 1/2" x 30" 7" x 3" x 40"	Approx 24"	BKTS. AT TOP	4'0" x 1'9"	24"	7'3"
Exposed Machinery Casings on Superstructure Decks	✓							
Machinery Casings within Superstructures not fitted with Class I Closing Appliances	✓							
Deckhouses on Flush Deck Ships ...	✓							
Particulars of Closing Appliances (state if capable of being manipulated from both sides).								
Poop Bulkhead	✓							
Raised Quarter Deck Bulkhead ...	✓							
Bridge, After Bulkhead	✓							
Bridge, Forward Bulkhead	✓							
Forecastle Bulkhead	TO SALOON, ACCOMMODATION & WASH PLACES ETC. WOOD DOORS 4'10" x 1'9" x 1 3/8" THICK WITH 15" SILLS TO DECK STORE (PORT) STEEL DOOR 4'0" x 1'9" x 24" SILL. TO DRYING ROOM (P. & S) STEEL DOORS 4'3" x 1'9" x 21" SILL. TO GALLEY (P. & S) STEEL DOOR (IN HALVES) 5'0" x 1'9" x 15" SILL. TO FOOD STORE (S-S) W.T. DOOR 4'0" x 2'3" x 24" SILL.							
Exposed Machinery Casings on Freeboard or Raised Quarter Deck ...	TO BOILER ROOM (P. & S) STEEL DOOR (IN HALVES) 4'0" x 1'9" x 24" SILL.							
Exposed Machinery Casings on Superstructure Decks	ENTRANCE DOOR OF COMPANION ON UPPER DECK FORWARD (PORT SIDE) WOOD DOOR 4'7" x 1'9" x 1 3/8" THICK WITH 18" SILL.							
Machinery Casings within Superstructures not fitted with Class I Closing Appliances	✓							
Deckhouses on Flush Deck Ships ...	✓							

SAUCY.....
Name of Ship

Freeboard Report Examined
(Date)
23.5.57

Signed

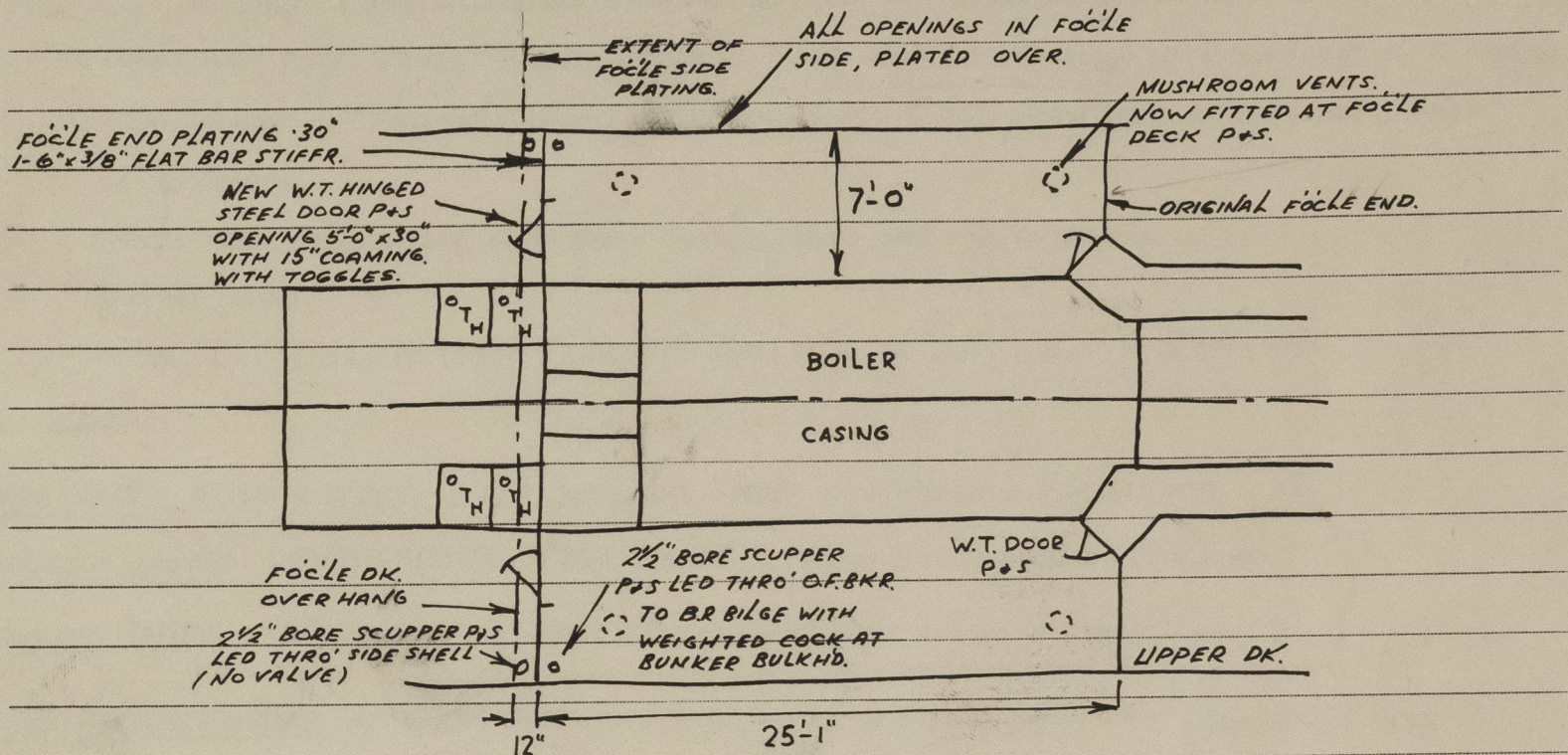
0125 2/4

Lloyd's Register of Shipping.

Ship's Name SAUCY

Official No. 182196.

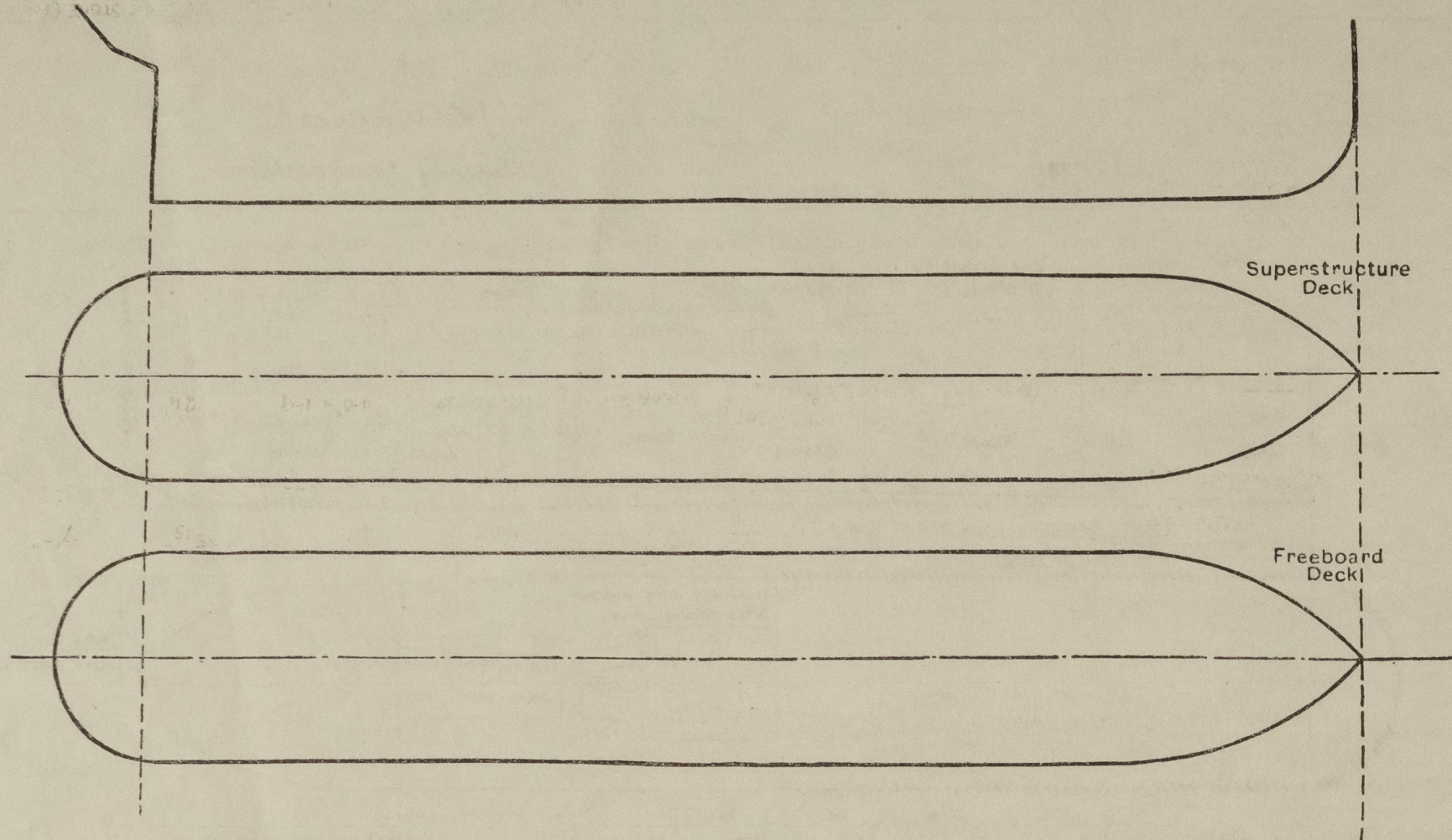
Memorandum of alterations reported since ship was surveyed for assignment of Load Lines in HULL. 16-2-43.



Openings in fore-castle bulkhead P+S. capable of being operated from both sides. A new fore-castle end bulkhead has now been erected as shown in sketch, plating .30" with 1-6" x 3/8" flat bar stiffers. C 3-6" spacing. A hinged steel W.T. door 5'-0" x 2'-6" elbow opening is fitted P+S. All openings in the fore-castle side plating have been blanked. 2- 8" diam. screw down W.T. mushroom vents have been fitted in the new fore-castle P+S at fore-castle deck. A 2 1/2" bore scupper to drain the new fore-castle, to the B.R. bilge, has been fitted P+S. & a new 2 1/2" bore scupper has been fitted at the fore-castle corner of the upper deck P+S.

J. Ab. Hayne.
Liverpool 5-1-56

The following diagrams should be used to indicate the positions of cargo and coaling hatchways, gangway, cargo and coaling ports, ventilators, companionways, etc., which would affect the seaworthiness of the ship:—



CASING TOP PLATED OVER .26 THICK. FUNNEL $\frac{1}{4}$ " PLATING. 2 STOKHOLD VENTILATORS 24" DIAM. ✓
4 FIDDLEY GRATINGS WITH STRONG STEEL STORM COVERS (HINGED) ✓
ENGINE ROOM SKYLIGHT OF STEEL STRONGLY CONSTRUCTED & FITTED WITH 6 HINGED STEEL COVERS - 2 LIGHTS IN EACH COVER.

Particulars of Companionways:— UPPER DECK AFT. ENGINE ROOM CASING AFTER END (STBD. SIDE) 2'6" x 2'5" x 2 1/2" SILL. PLATING— END ·30, TOP ·26. ✓
HINGED TEAK DOOR 2" THICK (AFTER END) WITH TEAK SLIDING TOP. ✓
UPPER DECK FORWARD. INSIDE SIDEHOUSE (PORT SIDE). PLATING ·25, STIFFENERS 2 1/2" x 1 1/4" HALF ROUND BAR SPACED 3'3". DOOR 4'7" x 1'9" x 1 3/8" THK.
WITH 18" SILL. DOORS FITTED WITH SPRING LOCKS OPERATED FROM BOTH SIDES.

Particulars of Ventilators in exposed positions on freeboard and superstructure decks :— FORECASTLE DECK.

CHIEF ENGINEERS ROOM & BOYS STORE.	2-6" DIAR. FRENCH TYPE MUSHROOM VENTS.	3'-10" & 4'-2" TO BOTTOM OF OPENING.	COAMING 5/16" THICK.
FORWARD PASSAGES.	2-8" " " " "	5'-0" TO BOTTOM OF OPENING.	5/16" THICK. BRACKETED TO SIDE OF SKYLIGHT.
FIREMEN'S & SEAMEN'S MESS.	2-8" " " " " "	2'-4" " " " " "	" " " " " "
STEWARDS COOK & PANTRY.	3-5" DIAR. GOOSENECK VENTS.	1'-3 1/2" FROM DECK TO OPENING.	VENTILATORS SUPPLIED WITH WOOD PLUGS & CANVAS COVERS. ALL COAMINGS OVER 36" HIGH SUITABLY STAYED.
SIGNALMAN & ASSISTANT STEWARDS ROOM.	6"x4" GOOSENECK VENT.		
SALOON.	2-6" DIAR. MUSH ROOM VENTS ON FORWARD SKYLIGHT TOP.		
SIDE CABINS IN FORECASTLE SPACE.	6" " " " " "		
GALLEY.	7" DIAR. FRENCH TYPE MUSHROOM VENT.	2'-9" TO BOTTOM OF OPENING.	COAMING 5/16" THICK. (INLET VENT).
" " " " " " " " " " " "	7" " " " " " " " " " " "	2'-11" " " " " " " " " " "	" " " " " " (EXHAUST VENT).
FOOD STORE.	7" DIAR. " " " " " " " " " " " "	3'-0" " " " " " " " " " "	" " " " " " " " " " " "
MAIN SUPPLY VENTILATORS TO FIREMEN'S & SEAMEN'S ACCOMMODATION. 2-13" DIAR. FRENCH TYPE MUSHROOM VENTS. 2'-11 1/2" TO OPENING. COAMING 5/16" THICK.			
<u>UPPER DECK.</u> TO ENGINE ROOM. 2-12" DIAR. FRENCH TYPE MUSHROOM VENTS. 2'-1" & 1'-11" TO BOTTOM OF OPENING. 5/16" COAMING.			
" " " " " " " " " " " "	1-14" " " " " " " " " " " "	4'-0" TO BOTTOM OF OPENING.	PROTECTED BY E.R. CASING.
" HOLD AFT.	1-6" " " " " " " " " " " "	3'-7" TO OPENING & 1-6" DIAR. COWL VENT.	COAMING 30"x.25."

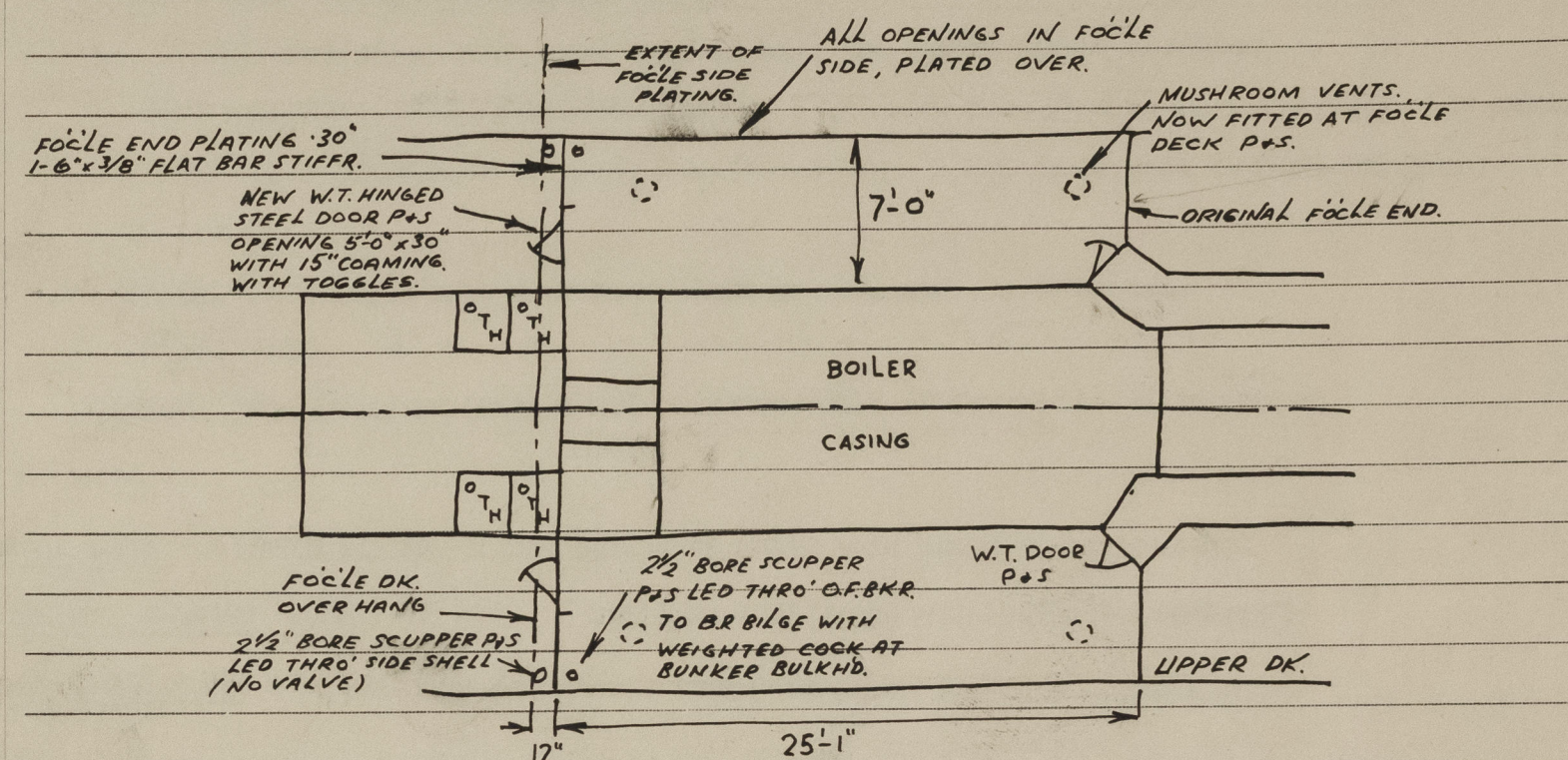
UPPER DECK. TO BOILER FEED TANK (P.&S) 2" DIAR. 3'5" TO MOUTH. PROTECTED BY BULWARK. AIR PIPES TO TANKS SUPPLIED WITH WOOD PLUGS.
" LAMP ROOM (STRD. SIDE) 1 1/2" " . 3'6" " " . " " " . To OIL FUEL TANKS SUPPLIED WITH 2 GAUZES.
" AFTER PEAK TANK (P.&S) 3" DIAR. 3'2" TO MOUTH.
" FORWARD OIL FUEL TANKS. 3 OFF 3" DIAR. 6'2" FROM DECK TO OPENING. PROTECTED BY DECKHOUSE.

TRUNK TOP. " AFTER OIL FUEL TANKS - 4 OFF 3" DIAR. 3'6" TO MOUTH. PROTECTED BY DECKHOUSE.

FORECASTLE DECK. FORE PEAK TANK - 3" DIAR. 3'3" TO MOUTH. " " BULWARK.
SIDE OIL FUEL TANKS (P.&S) 2 OFF - 3" DIAR. 5" TO MOUTH.
W.B.TANK, F.W.TANK, FEED WATER TANK & COFFERDAM (P.&S) 8 OFF - 2" DIAR. 5" TO MOUTH.

Ship's Name SAUCY Official No. 182196

Memorandum of alterations reported since ship was surveyed for assignment of Load Lines
in HULL. 16-2-43.



Opening in forecath bulkhead P.S. capable of being opened from both sides. A new fore end bulkhead has now been erected as shown in sketch, plating 30" with 1-6" x 3/8" flat bar stiff. C 3'-6" spacing. A ringed steel w.t. door 5'-0" x 2'-6" elbow opening is fitted P.S. All openings in the fore side plating have been blanked. 2- 8" diam. screws down w.t. mushroom vents have been fitted in the new fore P.S. at fore hatch. A 2 1/2" bore scupper to drain the new fore, to the B.R. bilge, has been fitted P.S. & a new 2 1/2" bore scupper has been fitted at the fore corner of the after deck P.S.

J. Ab. Layne.
Liverpool 5-1-56

Particulars of Gangway Cargo and Coaling Ports :—

NONE.

Particulars of Scuppers and Sanitary Discharge Pipes :— SCUPPERS. FROM UPPER DECK - 6 (PORT & STBD) CUT THRO' SHEER STRAKE & STRINGER ANGLE.

- DISCHARGES :— FROM CHIEF ENGINEER'S WASH BASIN (PORT) 1 1/2" DIAR. WITH STORM VALVE ON SHIP'S SIDE - 16" TO OPENING
- " CREW'S WASH PLACE & COOK'S ROOM (PORT) 2 1/2" DIAR. " " " " " " - 14 1/2" " "
 - " " W.C (PORT) - 4" DIAR. WITH STORM VALVE ON SHIP'S SIDE - 15" TO BOTTOM OF OPENING.
 - " CREW'S WASH PLACE, 2ND & 3RD ENGINEER'S CABINS :— 3" DIAR. WITH STORM VALVE ON SHIP'S SIDE (PORT) - 15" TO OPENING.
 - " STEWARD'S ROOM, 2ND OFFERS. RM. & PANTRY WASH BASIN & SINK :— 2" DIAR. STORM VALVE ON SHIP'S SIDE (STBD) - 13" TO OPENING.
 - " OFFICERS W.C (STBD). 4" DIAR. WITH STORM VALVE ON SHIP'S SIDE - 15" TO OPENING.
 - " P.O'S W.C (STBD). 4" " " " " " " " " - 15" " "
 - " OFFICERS' BATH, GALLEY ETC. (STBD). 3" DIAR. WITH STORM VALVE ON SHIP'S SIDE - 15" TO OPENING.

Particulars of Side Scuttles :—

- IN FORECASTLE SPACE :— 6 (PORT) & 5 (STBD) - 8" DIAR. SIDELIGHTS FITTED WITH HINGED W.I. DEADLIGHTS.
- BELOW UPPER DECK FORWARD. 6 (PORT) & 5 (STBD) - 8" DIAR. SIDELIGHTS (FIXED) WITH HINGED W.I. DEADLIGHTS.
- ON BOAT DECK SIDE PLATING. 4 - 8" DIAR. SIDELIGHTS (PORT & STBD) (FIXED) WITH HINGED W.I. DEADLIGHTS.
- BOILER CASING SIDE (PORT & STBD). 2 - 18" DIAR. SIDELIGHTS WITH HINGED W.I. DEADLIGHTS - 4' 6" FROM UPPER DECK TO BOTTOM OF OPENING.

Vertical distance of Sill of lowest Side Scuttle above top of keel 13' 10" 42' 0" FROM F.P.

Particulars of Guard Rails :—

- ON FORECASTLE DECK :— 3' 10" HIGH WITH 3 RODS. STANCHIONS SPACED 3' 9" APART.
- ON BOAT DECK (AFTER END) 3' 10" HIGH WITH 3 RODS, " " 3' 10" "
- " " " (AT SIDES). 2' 0" " " 2 RODS. " " 4' 0" "

Particulars of Gangways, Lifelines, etc. :—

NONE.

Particulars of Freeing Arrangements.						
	Length of Bulwark	Height of Bulwark	Size of Freeing Ports	Number each side	Area each side	Rule area each side
After Well	65' 0" ✓	4' 0" ✓	28" x 16 1/2" ✓	5 ✓	16.0 φ	13.0 φ
Forward Well	✓	✓				

State position of each freeing port { After Well :— FOR POSITION SEE SKETCH ON PAGE 1. 7 1/2" ABOVE DECK EDGE. ✓
(F. and A. position and height above deck edge) { Forward Well :— ✓

State whether the freeing ports are fitted with shutters, bars, or rails, and give particulars of such :— BALANCED STEEL SHUTTERS. ✓

Additional area where sheer is less than standard.

PARTICULARS OF PROTECTION TO OPENINGS, ETC.

HATCHWAYS ON FREEBOARD AND SUPERSTRUCTURE DECKS.											
Description of Hatchway			TRUNK TOP 4 O.T. HATCHWAYS TO AFTER OIL FUEL TANKS		UPPER DECK HATCH TO HOLD AFT.		UPPER DECK 2 O.T. HATCHWAYS TO SIDE OIL FUEL TANKS		FORECASTLE DECK HATCH TO BO'SNS STORE		
Dimensions of Hatchway			2 @ 2'-6" x 2'-6" 2 @ 2'-6" x 1'-9"		8'-0" x 6'-0"		11 1/2" x 9 1/2"		2'-9" x 2'-9"		
COAMINGS	{	Height above Deck	4'-0"		2'-3"		15"		12"		
		Thickness	Sides	.30		.40		.30		.375	
			Ends	.30		.40		.30		.375	
		Stiffeners	NONE		NONE		NONE		NONE		NONE
HATCH BEAMS	{	Number	NONE		NONE		NONE		NONE		
		Spacing	NONE		NONE		NONE		NONE		
		Scantling and Sketch	NONE		NONE		NONE		NONE		
FORE AND AFTERS	{	Number	NONE		NONE		NONE		NONE		
		Spacing	NONE		NONE		NONE		NONE		
		Unsupported Lengths Scantling* and Sketch	NONE		NONE		NONE		NONE		
HATCH COVERS	{	Bearing Surface	NONE		NONE		NONE		NONE		
		Material	STEEL COVER PLATE .50		PINE		STEEL PLATE .375 THICK		STEEL W.T. COVER PLATE		
		Thickness	SECURED BY 7/8" DIAR.		3"		SECURED BY 7/8" DIAR.		SECURED BY 7/8" DIAR.		
		How fitted	EYEBOLTS WITH		F.S.A.		EYEBOLTS WITH		EYEBOLTS WITH		
Bearing Surface			GUNMETAL TOGGLES		3"		GUNMETAL TOGGLES		GUNMETAL TOGGLES		
Spacing of Cleats			✓		24"		✓		✓		
Number of Tarpaulins			✓		2		✓		✓		
<p>*Are wood fore and afters steel shod at all bearing surfaces? ✓ Are battens and wedges efficient and in good condition? ✓ Are tarpaulins in good condition and in accordance with rule requirements? ✓ Are lashings provided in accordance with rule requirements? ✓</p>											

Particulars of any special features :—

Endorsement at first survey and at surveys for renewal of Certificate :—

The fittings and appliances are in accordance with the particulars shown on this form (or as now modified) and are in good condition.



© 2021

Lloyd's Register
Foundation