

Yhd. 1846.

7-SEP 1942

Index No. 36972 A
(For London Office only).

Lloyd's Register of Shipping.

SURVEYS FOR FREEBOARD.

(CONDITIONS OF ASSIGNMENT.)

Ship's Name "DEXTEROUS"

Port of Survey HULL.

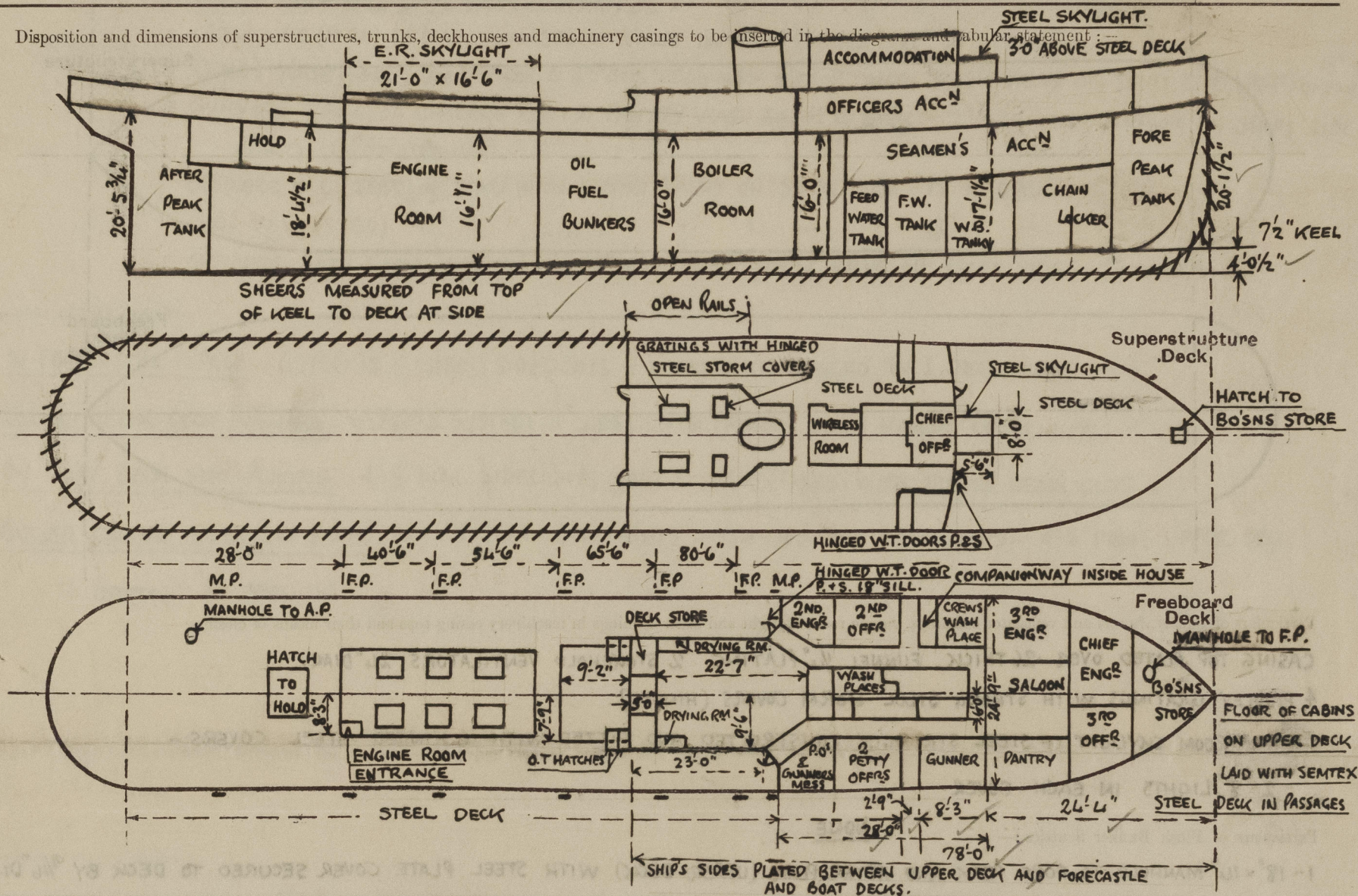
Official Number ✓

Surveyor's Signature J. M. Macleod

Nationality and Port of Registry BRITISH ✓

Date of Survey DURING CONSTRUCTION.

Disposition and dimensions of superstructures, trunks, deckhouses and machinery casings to be inserted in the diagrams and tabular statement:



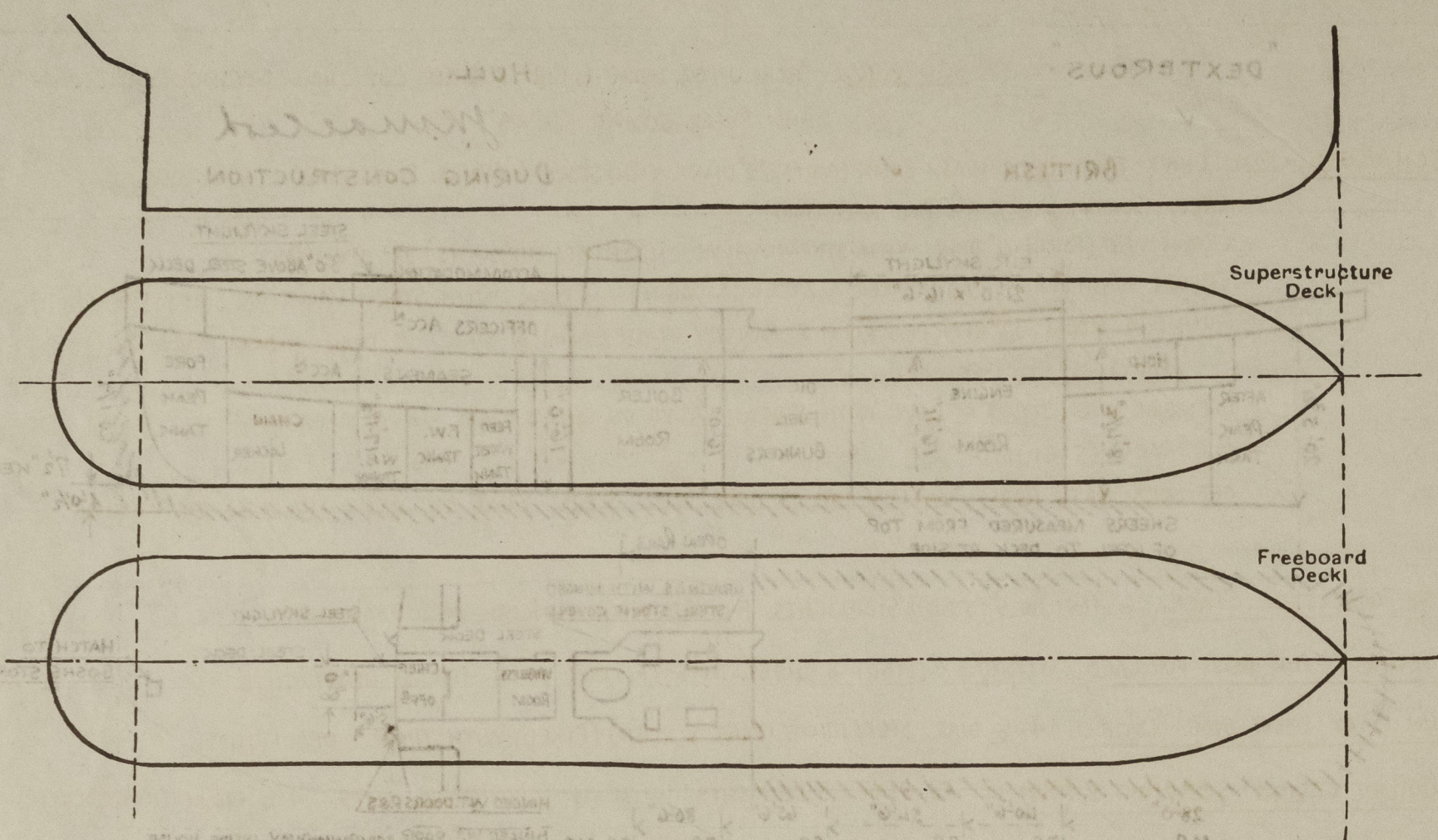
Particulars of Superstructures, Trunks, Casings, Deckhouses.

	Coaming	Plating	Stiffeners	Spacing	End Attachments of Stiffeners	Size of Openings	Height of Sills	Height of Casings
Poop Bulkhead ...								
Raised Quarter Deck Bulkhead ...								
Bridge, After Bulkhead ...								
Bridge, Forward Bulkhead ...								
Forecastle Bulkhead ... FRAME N° 65	25 ✓	25 ✓	2 1/2" x 2 1/2" x 25" ✓	30" ✓	NONE ✓	4' 10" x 1' 9" ✓	15" ✓	7' 3" ✓
Trunk, Aft ...	✓							
Trunk, Forward ...	✓							
Exposed Machinery Casings on Freeboard or Raised Quarter Deck ...	18" x 32	28	3 1/2" x 2 1/2" x 30" ✓ 7" x 3" x 40" ✓	24" ✓	KNEES AT TOP ✓	4' 0" x 1' 9" ✓	24" ✓	7' 3" ✓
Exposed Machinery Casings on Superstructure Decks ...								
Machinery Casings within Superstructures not fitted with Class I Closing Appliances ...								
Deckhouses on Flush Deck Ships ...								

Particulars of Closing Appliances (state if capable of being manipulated from both sides).

Poop Bulkhead ...	
Raised Quarter Deck Bulkhead ...	
Bridge, After Bulkhead ...	
Bridge, Forward Bulkhead ...	
Forecastle Bulkhead ...	TO SALOON ACCOMMODATION & WASH PLACES ETC. WOOD DOORS 4' 10" x 1' 9" x 1 3/8" THICK x 1' 3" SILLS.
Exposed Machinery Casings on Freeboard or Raised Quarter Deck ...	TO DECK STORE:- STEEL DOOR 4' 10" x 1' 9" x 24" SILL. TO DRYING ROOM:- STEEL DOOR 4' 3" x 1' 9" x 24" SILL.
Exposed Machinery Casings on Superstructure Decks ...	TO BOILER ROOM:- STEEL DOOR (IN HALVES) 4' 0" x 1' 9" x 24" SILL. TO GALLEY:- STEEL DOOR (IN HALVES) 5' 0" x 1' 9" x 24" SILL.
Machinery Casings within Superstructures not fitted with Class I Closing Appliances ...	ENTRANCE DOOR OF COMPANION TO LOWER DECK (PORT SIDE)- WOOD DOOR 4' 7" x 1' 9" x 18" SILL.
Deckhouses on Flush Deck Ships ...	ALL DOORS FITTED WITH SPRING LOCKS OPERATED FROM BOTH SIDES.

The following diagrams should be used to indicate the positions of cargo and coaling hatchways, gangway, cargo and coaling ports, ventilators, companionways, etc., which would affect the seaworthiness of the ship :—



- 2- 8" LIGHTS IN EACH COVER.

NONE.

1- 18" x 14" MANHOLE TO FORE PEAK AND AFTER PEAK (UPPER DECK) WITH STEEL PLATE COVER SECURED TO DECK BY 9/16" DIAR. STUDS SPACED 3 1/2" APART.

DOOR 4'-10" x 1'-9" x 1 3/8" THICK - SILL 18" HIGH. DOORS FITTED WITH SPRING LOCKS OPERATED FROM BOTH SIDES.

ENGINE 10001-1

FORECASTLE DECK. FORE PEAK TANK 3 DIAM. - 36 TO MOUTH.

NONE.

Particulars of Scuppers and Sanitary Discharge Pipes:— SCUPPERS. FROM UPPER DECK 6 PORT & STSD. CUT THRO' STRINGER ANGLE AND SHEER STRAKE:— 6" x 3".

DISCHARGES:- FROM CHIEF ENGINEERS WASH BASIN (PORT) 1 1/2" DIAR. WITH STORM VALVE ON SHIP'S SIDE - 16" TO OPENING.

- " CREW'S WASH PLACE & 3RD ENGINEER (PORT) 2½" " " " " " " - 14½" " "
- " CREW'S W.C. (PORT) 4" DIAR. WITH STORM VALVE ON SHIP'S SIDE - 15" TO OPENING.
- " CREW'S WASH PLACE, 2ND OFFICER & 2ND ENG^R'S CABINS:- 3" DIAR. WITH STORM VALVE ON SHIP'S SIDE (PORT) 15" TO OPENING.
- " GUNNERS ROOM, 3RD OFFICERS ROOM & PANTRY WASH BASIN & SINK:- 2" DIAR. STORM VALVE ON SHIP'S SIDE (PORT) - 13" TO OPENING.
- " OFFICERS W.C. (STBD) 4" DIAR. WITH STORM VALVE ON SHIP'S SIDE - 15" TO OPENING.
- " P.O.'S W.C. (STBD). 4" " " " " " " " - 15" " " "
- " OFFICERS BATH ROOM, GALLEY ETC. 3" DIAR. WITH STORM VALVE ON SHIP'S SIDE - 15" TO OPENING.

IN FORECASTLE SPACE. 6 (PORT) & 5 (STBD) 8" SIDELIGHTS FITTED WITH HINGED W.I. DEADLIGHTS.

BELOW UPPER DECK FORWARD - 6 (PORT) & 5 (STBD) 8" SIDELIGHTS (FIXED) WITH HINGED DEADLIGHTS.

ON BOAT DECK SIDE PLATING. 4-8" DIAR. SIDELIGHTS (PORT & STBD) (FIXED) WITH HINGED DEADLIGHTS.

BOILER CASING SIDE (PORT & STBD). 2-18" DIAR. SIDELIGHTS WITH HINGED DEADLIGHTS- 4'6" FROM UPPER DECK
TO BOTTOM OF OPENING.

Vertical distance of Sill of lowest Side Scuttle above top of keel 13' 10" - 42'-0" FROM F.P.

ON FORECASTLE DECK: - 3'-10" HIGH WITH 3 RODS. STANCHIONS SPACED 3'-9" APART.

" BOAT DECK: (AFTER END) 3'-4" HIGH WITH 3 RODS " " 3'-10" "

" " " (AT SIDES) 2'-0" HIGH " 2 RODS " " 4'-0" "


NONE.

Particulars of Freeing Arrangements.						
	Length of Bulwark	Height of Bulwark	Size of Freeing Ports	Number each side	Area each side	Rule area each side
After Well	65'0"	4'0"	28" x 16 1/2"	5	16.0 ft ²	13.0 ft ²
Forward Well	✓					

State position of each freeing port { After Well :— FOR POSITION SEE SKETCH ON PAGE 1. 7 1/2" ABOVE DECK EDGE.
(F. and A. position and height above deck edge) { Forward Well :— ✓

State whether the freeing ports are fitted with shutters, bars, or rails, and give particulars of such :— BALANCED STEEL SHUTTERS. ✓

Additional area where sheer is less than standard.



© 2021
Lloyd's Register
Foundation

 $0017 \frac{2}{1}$

PARTICULARS OF PROTECTION TO OPENINGS, ETC.

HATCHWAYS ON FREEBOARD AND SUPERSTRUCTURE DECKS.									
Description of Hatchway		TRUNK TOP 4 OILTIGHT HATCHES TO AFTER OIL FUEL BUNKERS		UPPER DECK HATCH TO HOLD AFT		UPPER DECK 2 OILTIGHT HATCHES TO SIDE BUNKERS		F/CLE DECK HATCH TO BO'SNS STORE	
Dimensions of Hatchway		22' 2" x 2' 6" x 2' 6" x 1' 9"		8' 0" x 6' 0"		11 1/2" x 7 1/2"		2' 9" x 2' 9"	
COAMINGS	Height above Deck	...	4' 0"	...	2' 3"	...	15"	...	12"
	Thickness	Sides
	Stiffeners	Ends
	Brackets, Stays
HATCH BEAMS	Number	...	NONE	...	NONE	...	NONE	...	NONE
	Spacing
	Scantling and Sketch
FORE AND AFTERS	Number	...	NONE	...	NONE	...	NONE	...	NONE
	Spacing
	Scantling* and Sketch
HATCH COVERS	Material	...	STEEL PLATE .50 THICK	...	LINE 3"	...	STEEL PLATE .375 THICK	...	STEEL W.T. COVER
	Thickness	...	SECURED BY 7/8" DIAR.	...	F&A.	...	SECURED BY 7/8" DIAR.	...	PLATE SECURED BY
	How fitted	...	EYEBOLTS WITH	...	3"	...	EYEBOLTS WITH	...	7/8" DIAR. EYEBOLTS
	Bearing Surface	...	GUNMETAL TOGGLES.	...	2 1/4"	...	GUNMETAL TOGGLES	...	WITH GUNMETAL TOGGLES.
Spacing of Cleats		...	✓	...	2	...	✓	...	✓
Number of Tarpaulins		...	✓	...	2	...	✓	...	✓
<p>*Are wood fore and afters steel shod at all bearing surfaces? <i>Yes</i></p> <p>Are battens and wedges efficient and in good condition? <i>Yes</i></p> <p>Are tarpaulins in good condition and in accordance with rule requirements? <i>Yes</i></p> <p>Are lashings provided in accordance with rule requirements? <i>Yes</i></p>									

Particulars of any special features:—

Endorsement at first survey and at surveys for renewal of Certificate:—

The fittings and appliances are in accordance with the particulars shown on this form (or as now modified) and are in good condition.

