

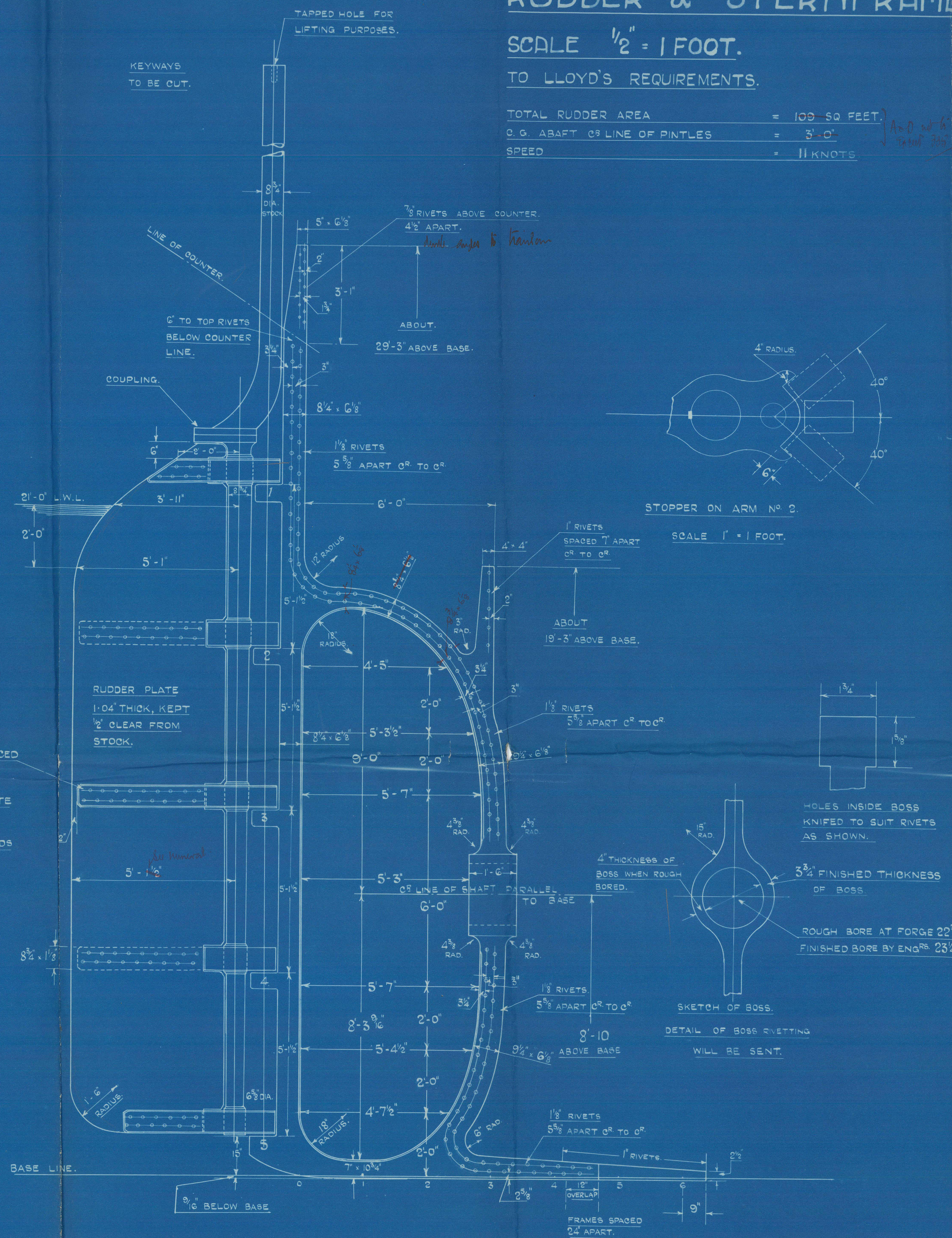
S.S. No 258.

RUDDER & STERNFRAME

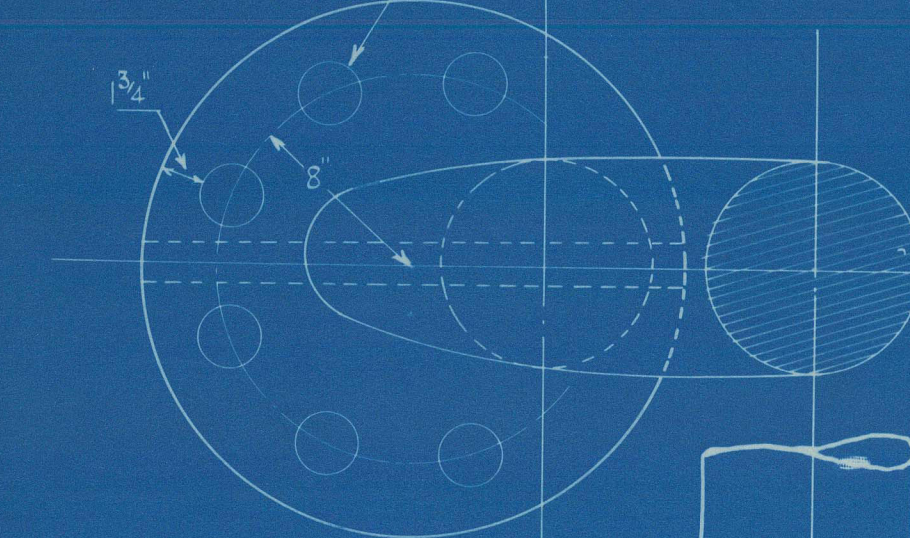
SCALE $\frac{1}{2}" = 1 \text{ FOOT.}$

TO LLOYD'S REQUIREMENTS.

TOTAL RUDDER AREA = 109 SQ FEET.
C.G. ABAFT C.B. LINE OF PINTLES = 3'-0"
SPEED = 11 KNOTS.



6 OFF - $2\frac{5}{8}"$ DIA. FITTED BOLTS.

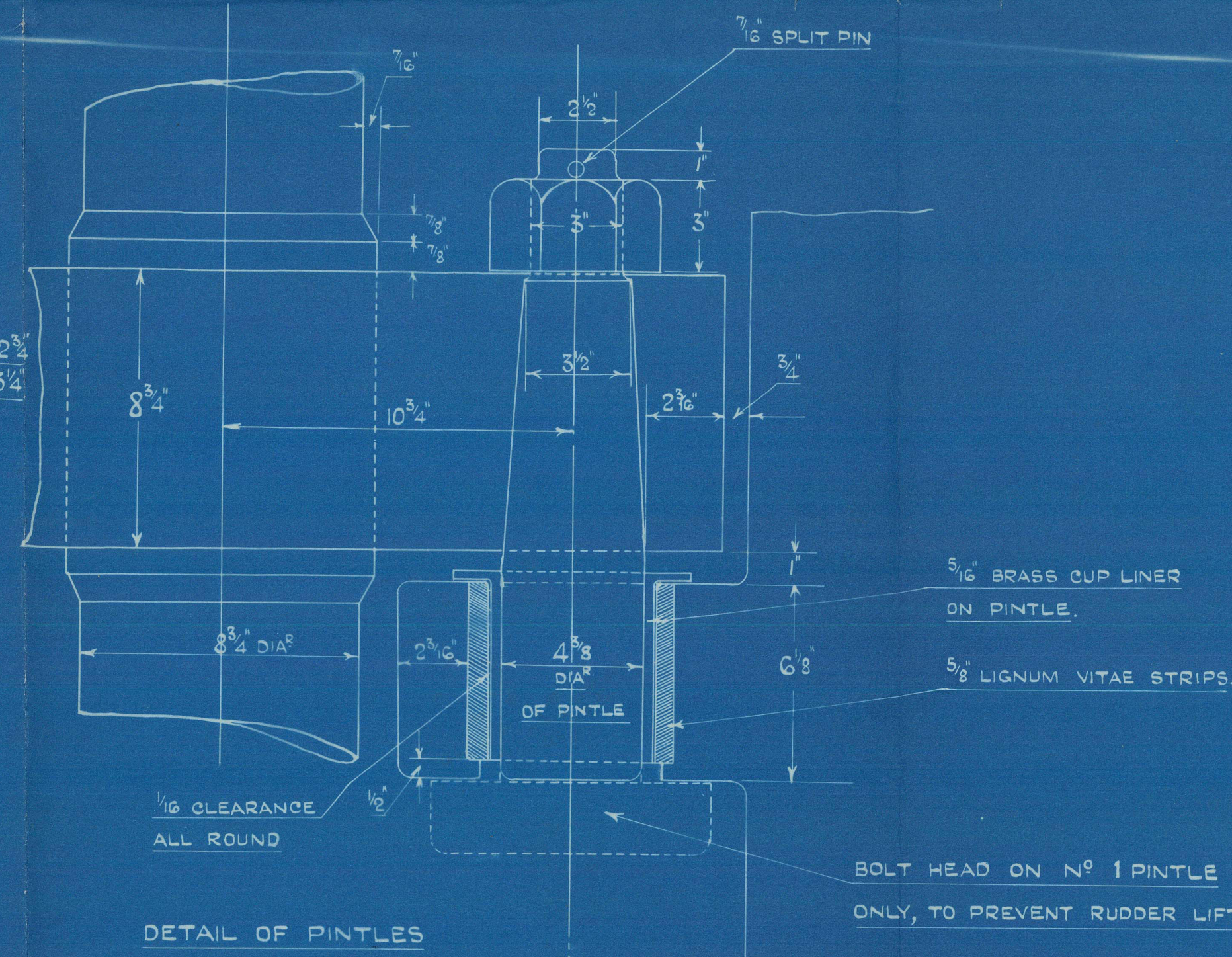


HORIZONTAL COUPLING.

SCALE $\frac{1}{2}" = 1 \text{ FOOT.}$

NOTES:-

RUDDER & STERNFRAME TO BE OF FORGED SCRAP IRON AND TESTED TO RULE.
GUDGEONS TO BE LINED WITH $\frac{5}{8}"$ LIGNUM VITAE STRIPS, SUPPLIED COMPLETE WITH STERNFRAME, ALSO ONE SPARE SET OF LIGNUM VITAE STRIPS FOR ONE PINTLE TO BE SUPPLIED.
PINTLES OF STEEL WITH $\frac{3}{16}"$ BRASS CUP LINERS, SUPPLIED COMPLETE WITH RUDDER, ALSO ONE SPARE CUP LINER TO BE SUPPLIED.
ALL KEYWAYS TO BE CUT. PARTICULARS WILL BE SENT LATER.
ALL HOLES TO BE BORED.
GUAGE OF RUDDER HEAD TO BE SUPPLIED.
CORRECT SPACING OF RUDDER GUDGEONS WILL BE SENT LATER.
CORRECT HEIGHTS FOR STERN POST & RUDDER STOCK WILL BE SENT LATER.



APPROVED

LLOYD'S REGISTER OF SHIPPING

114 x 119 mm

01896-3811-0242

Register

Kaplan & Miller

Simpson & Russell
S. S. 28-8

~~John~~

- of Waipiatu -

GLASGOW REPORT No 45916



© 2021

011896-011904-0247

Lloyd's Register
Foundation