

# BALANCED STREAMLINE RUDDER. M. V. N° 1069.

SCALE 1" = ONE FOOT. DETAILS AS INDICATED.

RUDDER FRAME :- BEST QUALITY STEEL CASTING.  
RUDDER STOCK :- BEST QUALITY FORGED STEEL.

DIMENSIONS :- 520.0 S.P. x 69.9' MLD x 37.3' MLD TO UPPER DECK.  
TO CLASS 100 A.1. AT LLOYD'S SPECIAL SURVEY FOR CARRYING PETROLEUM  
IN BULK. LOAD DRAFT 29.9'. SPEED 15 KNOTS.  
IMMERSED AREA OF RUDDER 211 SQUARE FEET. RUDDER 18.0' x 11.9'.  
IMMERSED AREA OF RUDDER STOCK 18.0' x 9.0' = 162 x C.G. 4.5' = 729.  
IMMERSED AREA FOR RUDDER STOCK 18.0' x 2.75' = 49.5 x C.G. 1.4575' = 71.61.  
AREA = 211.5 NUMERICAL = 630.61.  
DIAMETER OF STOCK TO RULE = 15.75' + 10% FOR TANKER = 17.325'.  
DIAMETER OF STOCK IN WAY OF STEERING BOX = 18'.  
STOCK INCREASED 1/4" IN WAY OF STEERING GEAR = 18.25' 139%.  
RUDDER STOCK TO BE ACCURATELY TURNED TO PARTICULARS GIVEN.  
RUDDER FRAME TO BE ACCURATELY CAST TO SHAPE AS PER DETAILS.  
KEYWAYS ETC. TO BE CUT IN RUDDER STOCK & COUPLING TO PARTICULARS GIVEN.  
RUDDER NOT TO EXCEED GIVEN SCANTLING. EXCESS OVER ESTIMATED WEIGHT WILL NOT BE PAID.  
PATTERN OF RUDDER FRAME TO BE APPROVED BY SHIPBUILDERS' DESIGNER BEFORE CASTING.

CONSTRUCTION NOTE  
RUDDER FRAME TO BE LAID ON TOP OF BOTTOM RUDDER SHELL PLATE  
AND TO BE WELDED TO FRAME AS INDICATED.  
ALL WELDED SURFACES OF RUDDER TO BE SCOTED WITH BUTT JOINTS  
SOLUTION TO BE LAID IN POSITION & ENTIRE RUDDER  
WELDED COMPLETE AS INDICATED.

NOTE :- BOLTS TO BE TURNED IN ONE PIECE & PROPERLY SHOWN  
ON PINTLE & STOCK BY RUDDERMAKER.

NOTE :- WHEN FLOATING RUDDER CLEARANCE TO BE LEFT  
BETWEEN BOTTOM OF STERNFRAME & BOTTOM OF PINTLE  
TO ENSURE THAT RUDDER CARRIES IS BEARING  
ENTIRE WEIGHT OF THE RUDDER.

Arrangements to be made  
to prevent rudder lifting.

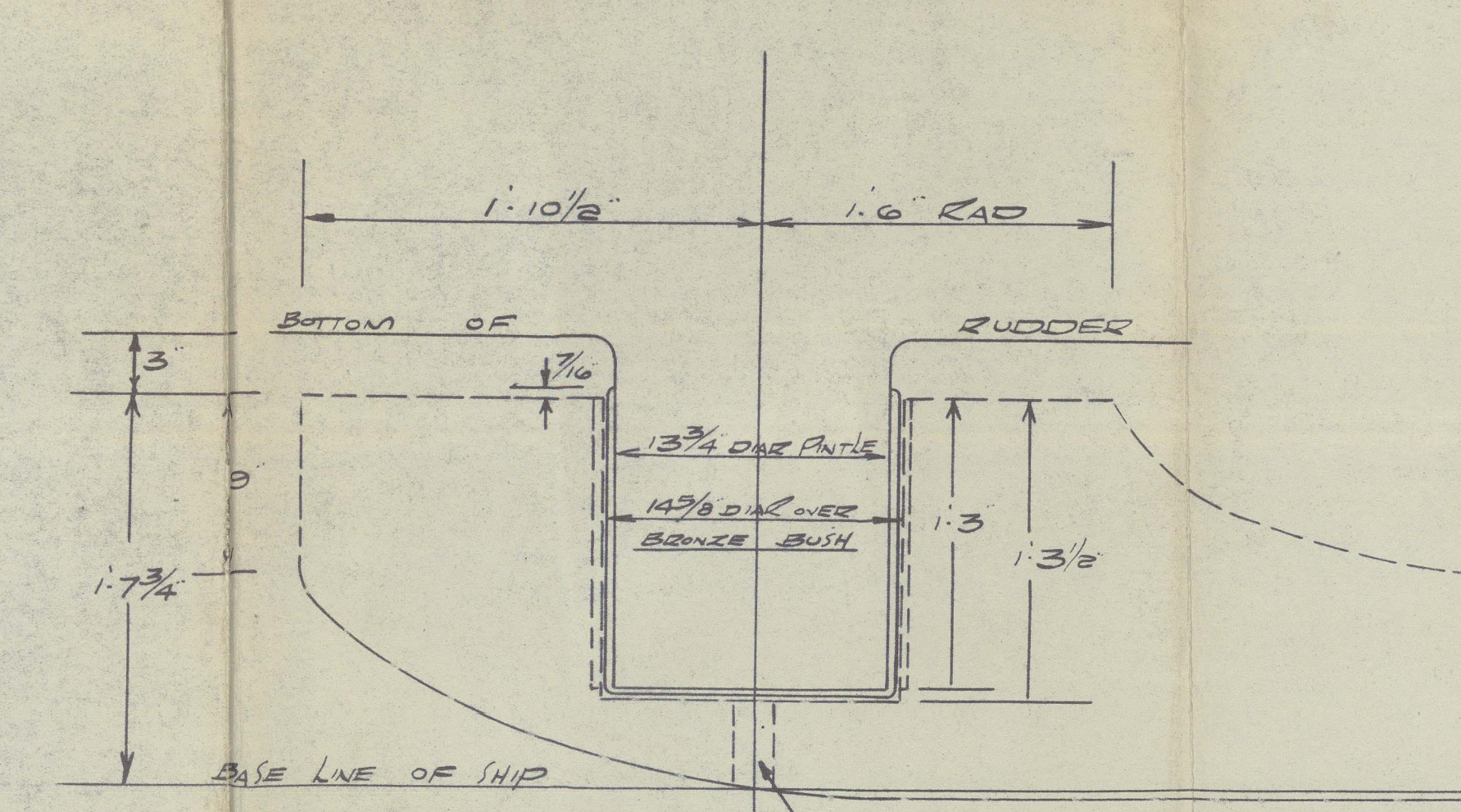
edges of hole for coupling bolts  
to be slightly rounded &  
longer's octagon.

HEIGHT OF DECK ABOVE BASE LINE OF SHIP = 23.11'  
LENGTH OF RUDDER STOCK ABOVE DECK M.D. =  
TOTAL LENGTH OF RUDDER ABOVE BASE LINE =  
HEIGHT TO BOTTOM OF RUDDER STOCK =  
TOTAL LENGTH OF RUDDER STOCK =

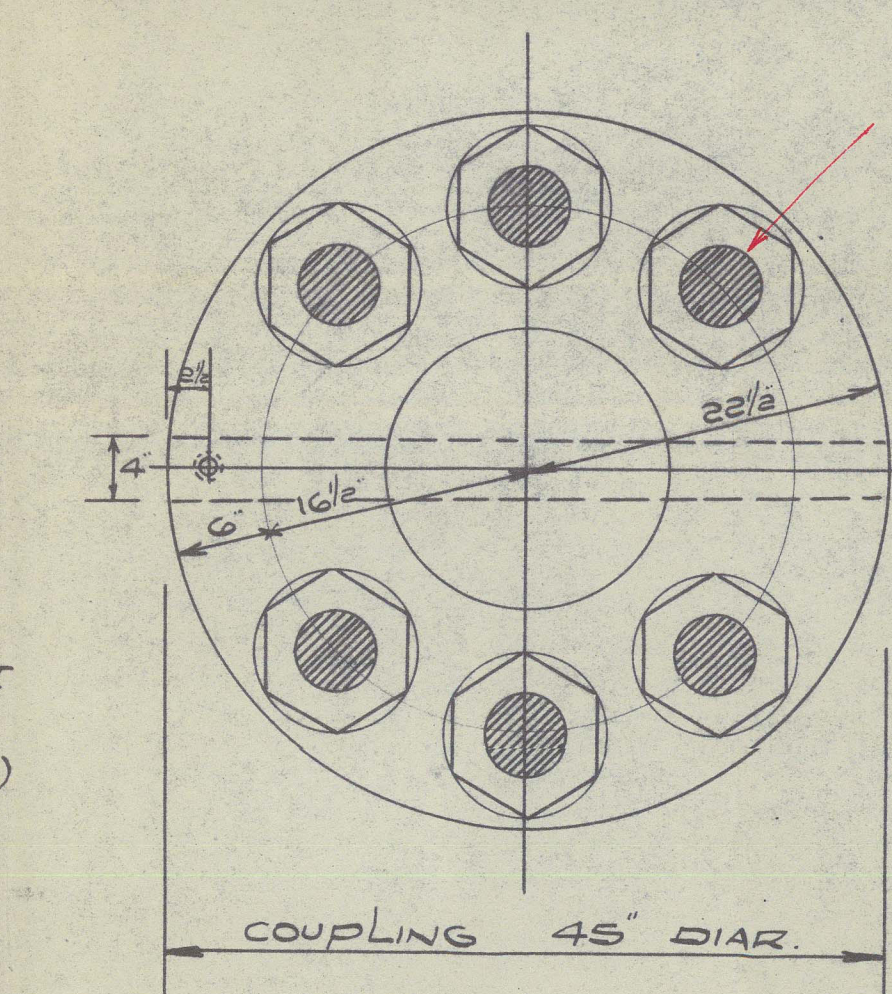
WELDING :-  
TACK WELDS 3" LONG SPACED 6" APART REMOVED  
& 10" APART ACT. HORizontally 1.5" APART  
VERTICALLY ON BOTTOM PLATE. SLOT WELDS  
3" x 1" SPACED 6" APART FORWARD & 10" APART  
ACT. HORizontally & 6" APART VERTICALLY  
ON TOP PLATE.

DETAIL OF RUDDER COUPLING  
RUDDER COUPLING TO BE SUPPLIED BY  
RUDDERMAKER. FACING SURFACES TO BE  
MATCHED. COUPLING 45" DIAM. FLANGES 5"  
THICK. 5" DIA. & 5" DIA. FITTED STEEL BOLTS  
EFFICIENTLY LOCKED WITH COTTER PINS.  
BOLTS 33" PITCH CENTRES. CARE TO BE  
TAKEN BOLTS DO NOT ROLL COUPLING KEY  
4 1/2" AT AFT END TAPERING TO 2 1/2" AT  
FORWARD END. KEY TO BE DRIVEN FROM AFT  
END & SUPPLIED BY RUDDERMAKER.  
1 SET SCREW TO KEY (NOT REQUIRED BY RULE)

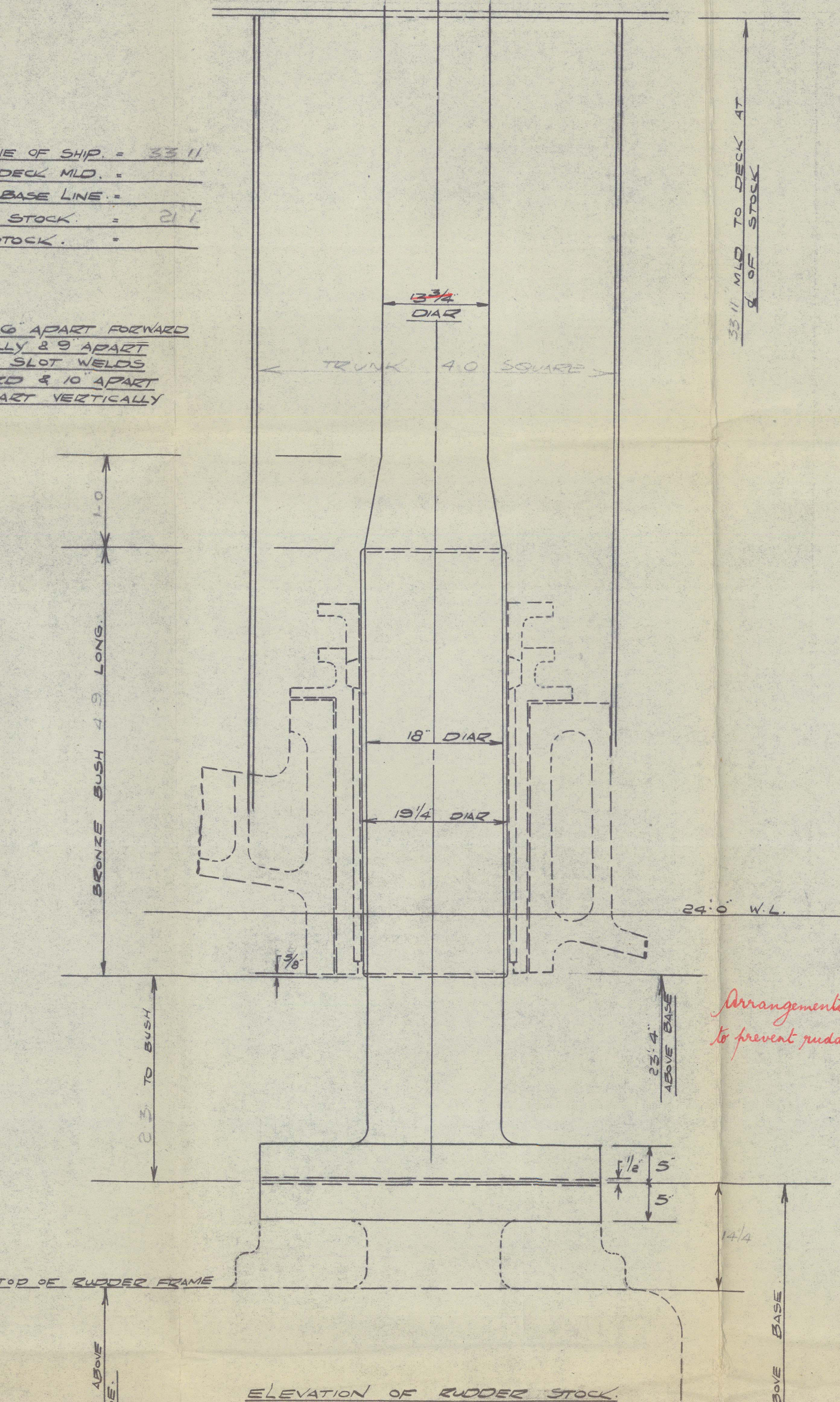
PLAN VIEW OF COUPLING  
FACES OF COUPLING TO BE CLOSED TO SURVEYOR'S SATISFACTION.



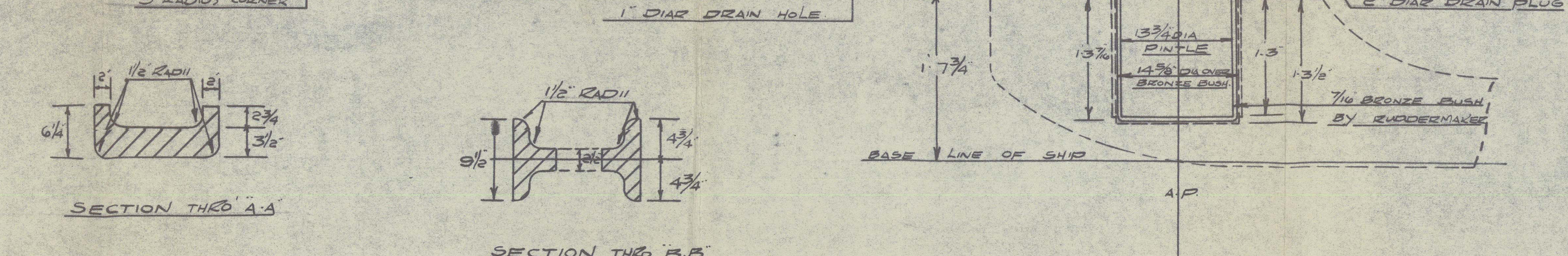
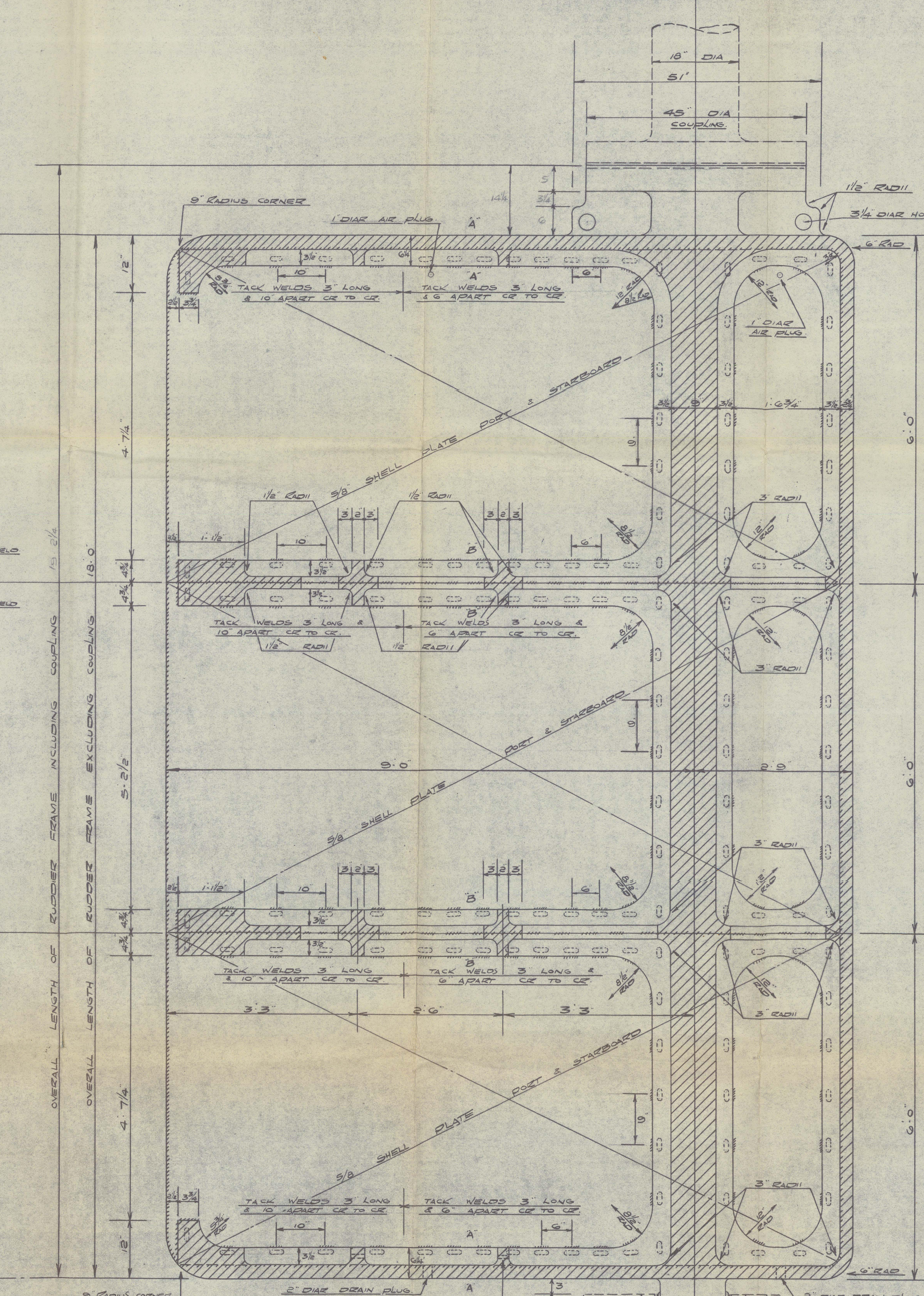
DETAIL OF BOTTOM PINTLE  
SCALE 1/8" = ONE INCH



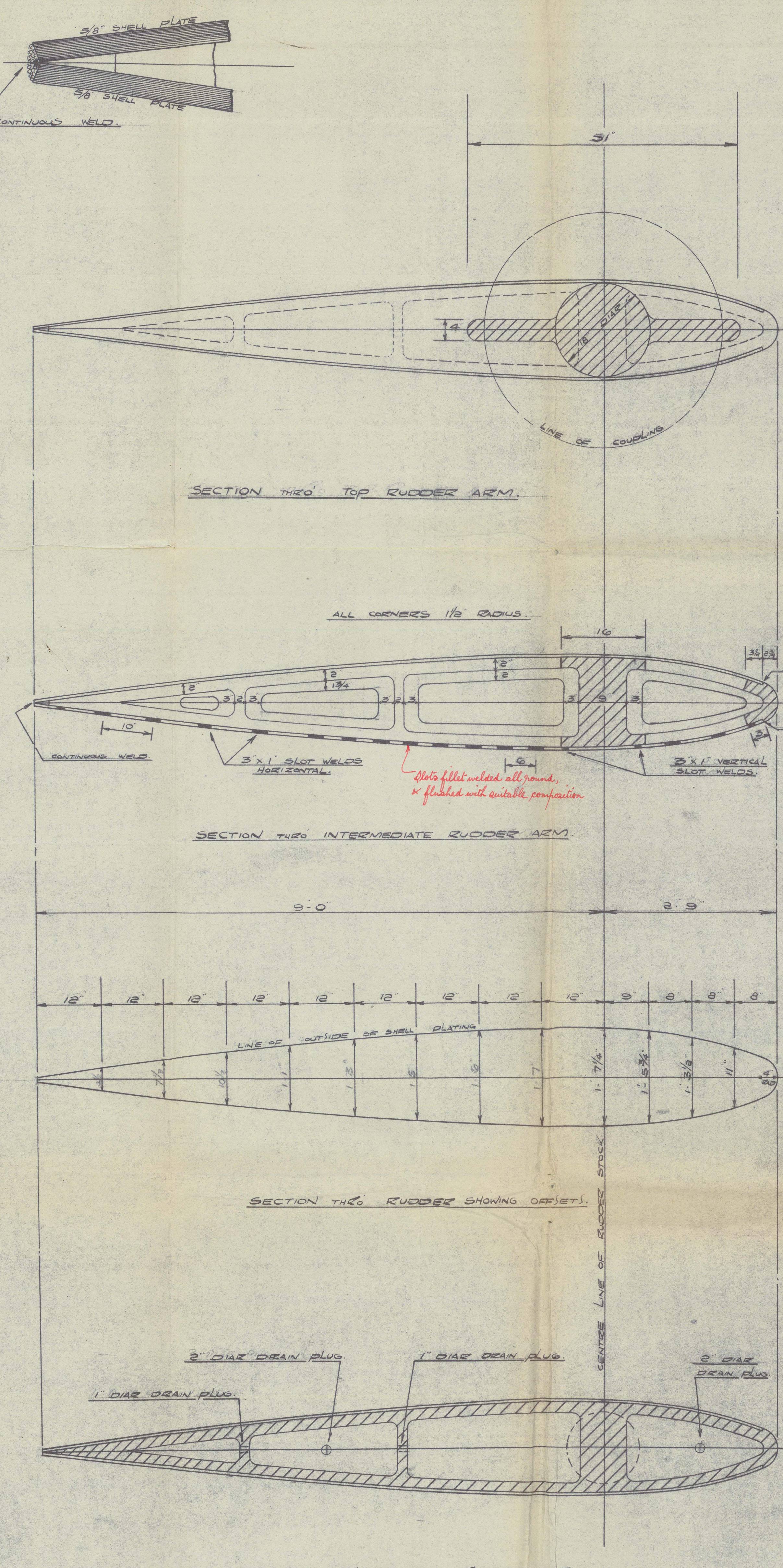
PLAN VIEW OF COUPLING  
FACES OF COUPLING TO BE CLOSED TO SURVEYOR'S SATISFACTION.



ELEVATION OF RUDDER STOCK



SECTION TWO AA  
SECTION TWO BB  
SECTION TWO CC



SECTION TWO TOP RUDDER ARM  
SECTION TWO INTERMEDIATE RUDDER ARM  
SECTION TWO BOTTOM RUDDER ARM



Libbyms 1069

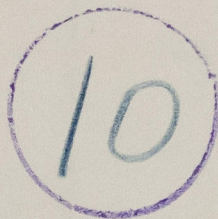


Rudder

7/ "Tuareg" ★

Greenock Visit Entry Report N° 24881.

RECORDS DEPT..  
LONDON



© 2021

Lloyd's Register  
Foundation

011896-011904-0158