

End platings in way of grooving have now been built up EW on water sides and reinforced externally by a welded pad in each case. All four lower boiler doors were found badly fitting and have now been built up EW and adjusted as necessary.

Both boilers were tested to 200 lbs. water pressure upon completion of repairs and found tight.

The new plating used to repair furnaces was cut from a plate, Stamped Lloyd's Boiler quality, Furnace No. 5041/62000-906 E.Z. 155. Certificate marked Charge 9850 J.K.HELME 4th May, 1949.

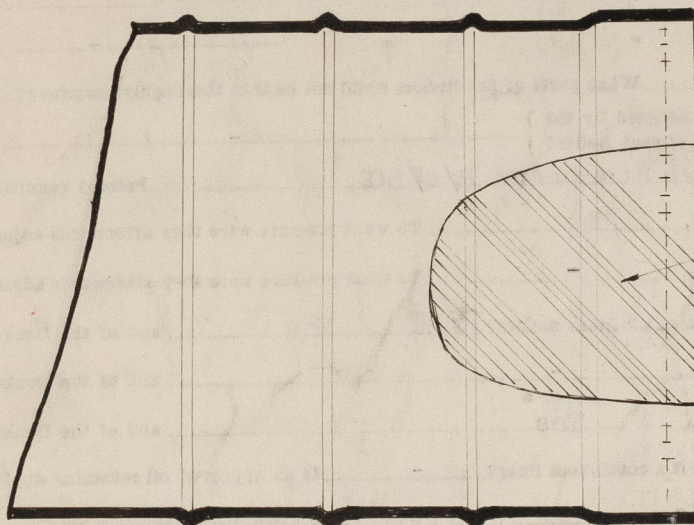
In view of the condition of the centre furnaces in each boiler, the boiler pressure has been reduced to 148 lbs. per sq. inch.

It is recommended that both centre furnaces be renewed before the end of April, 1951 (12 months limit).

ANNUAL SURVEY.

Now done:- Main and auxiliary machinery, windlass and steering gear, generally examined (not opened up) and maintenance appears satisfactory.

CK Mapleton



FURNACE CROPPED
THUS.



© 2021

Lloyd's Register
Foundation