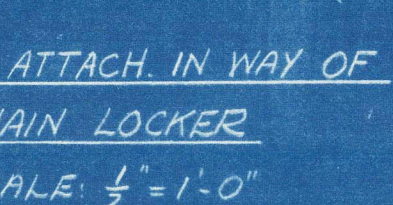
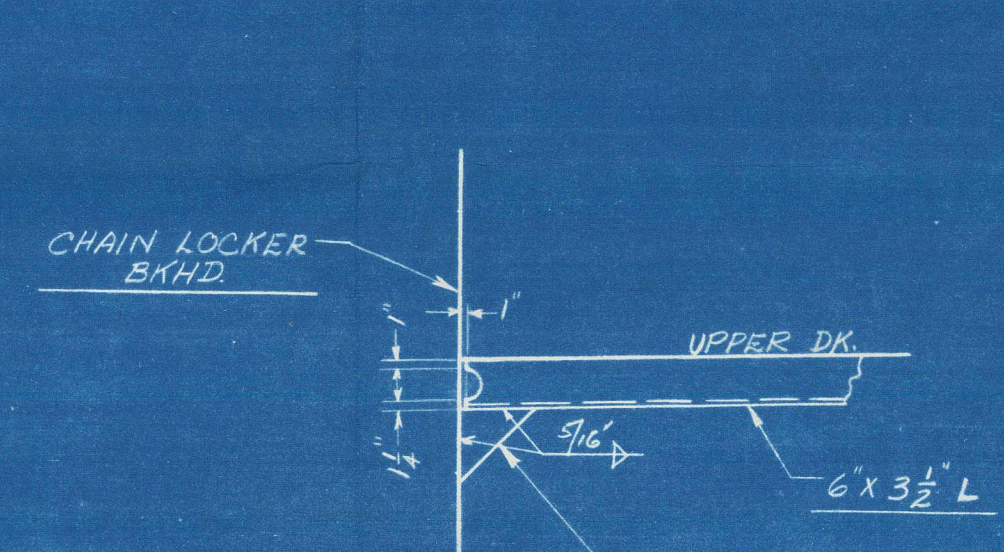
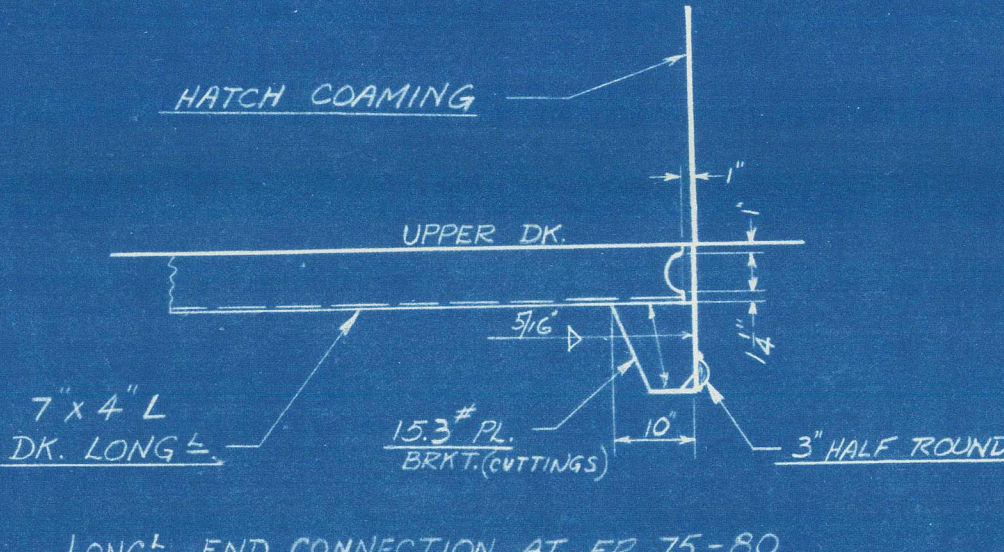


## RIVETING SCHEDULE

CONNECTIONS	DIA. RIV.	SPACING	
		DIA.	INCH.
6" SEAMS DBL ROW	1"	4 1/2"	4 1/2"
5 1/4" SEAMS DBL ROW	3/8"	4 1/2"	4"



## ALTERATIONS

## GENERAL NOTES

- 1 VENT HOLES OF 1/4" DIA. ARE TO BE CUT IN LONGS AT ABOUT 18" SPACINGS.
- 2 DECK TO BE OIL TIGHT.
- 3 RIVET HOLES, EXCEPT TRACK HOLES ARE TO BE DENIED FULL SIZE IN ONE FAYING MEMBER IN SHEAR, IN TWO OTHERS BY SPIND.
- 4 TRACK HOLES TO BE MADE OF FULL SIZE UNDER AND REARMED AFTER ASSEMBLY.
- 5 SIGNIF. EDGES OF RIVETED SCAM'S ARE TO BE JOINED.

NO.	DWG. NO.	TITLE
1	H-4463-122-6	DEEP TANK TRANS WEB FRS. 75-80-8
2	H-4463-122-16	TRANS. WEBS 85-FP. BET 2142 & FOCAL
3	H-4463-125-10	BHD. 88 & FWD. CHAIN LOCKER
4	H-4463-142-2	DRY CARGO HATCH
5	H-4463-232-3C	FOOR DEEP TANK LADDERS.
5	H-4463-232-3C	FOOR DEEP TANK LADDERS.

PLATE SHEET NO. 134 1/2

SHARE SHEET NO. 134 110 23

H-4466			H-4466
H-4465			H-4465
H-4464			H-4464
H-4463			H-4463
HULL NO.	MC NO	NAME	CHARGE
CHARGE: H-4463			105 124

H-4463-124-3	7/27/77
BETHLEHEM-SPARROWS POINT SHIPYARD, INC. SPARROWS POINT, MD. UPPER DECK PLATING FOR'D. END	

SCALE $\frac{1}{4} = 1'-0"$	DATE FEB. 18, 1948
DRAWN <i>Meehan</i>	APPROVED <i>EAS</i>
TRACED	APPROVED
CHECKED <i>Perls</i>	APPROVED <i>bs</i>



"WORLD PEACE" ★

upper deck plating (forward)

RECORDS DEPT.,  
LONDON

2



© 2021

Lloyd's Register  
Foundation

011884-011889-0094