

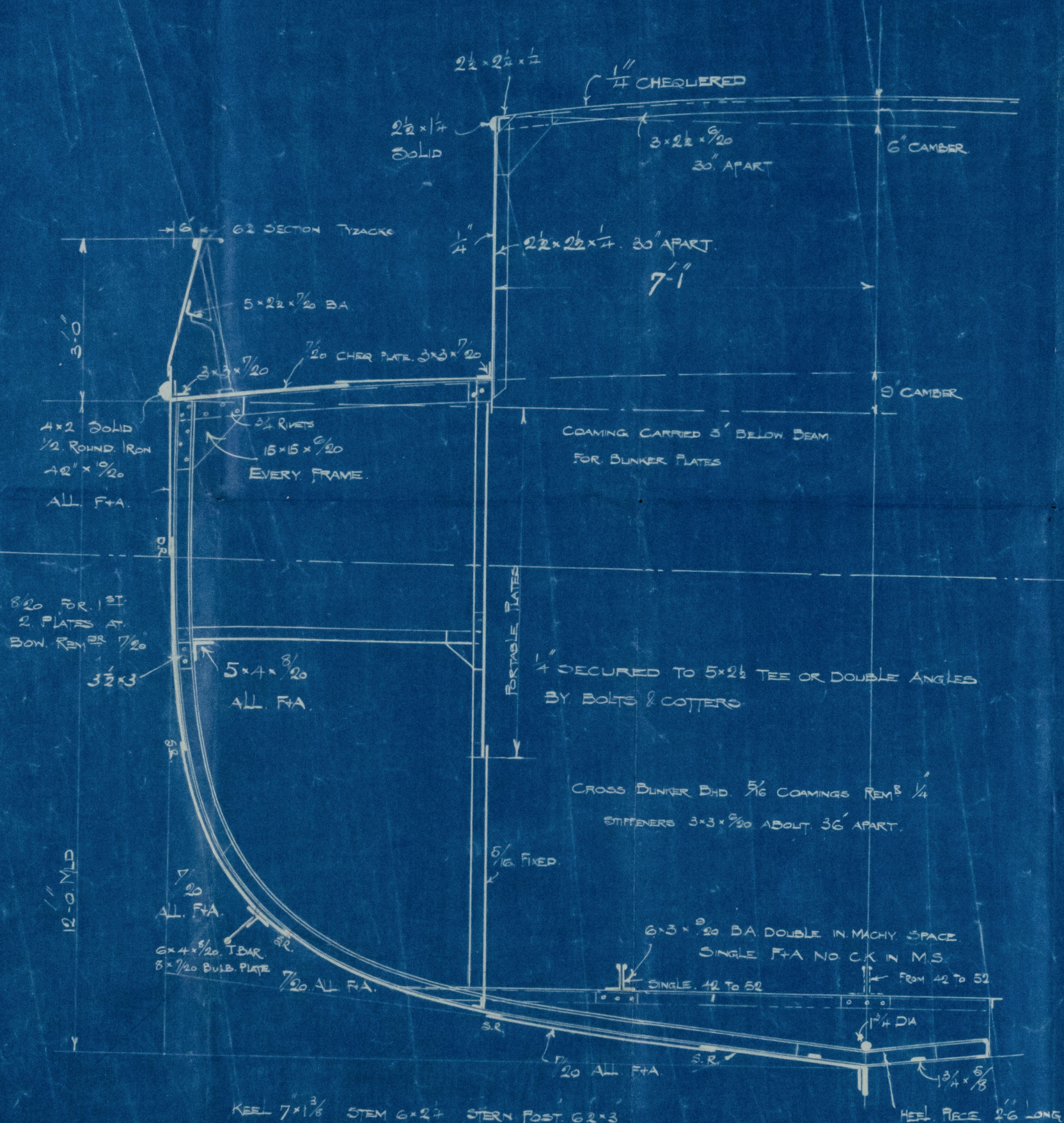
N^o 556.7

MIDSHIP. SECTION

SCALE $\frac{1}{2}$ = 1 FOOT.

DIMENSIONS 100'-0" x 25'-6" x 12'-0" M.L.D.
CLASS 100 A1. LLOYDS

R.S.
13/7/09



KEEL 7x1 3/8 STEM 6x2 1/2 STERN POST 6x2x3

FRAMES 5x2 1/2 x 7/20 BULB ANGLES SPACED 2' APART HEEL PIECES 2'-6" LONG

REVERSE FRAMES 2 1/2 x 2 1/2 x 1/4 TOP OF FLOORS ONLY

IN BOILER SPACE 3 1/2 x 3 1/2 x 7/20 SINGLE ANGLE ENG FLOOR REV 6x6 x 3/20

FLOORS 17x6 x 1/20 STRAIGHT ON TOP 8/20 IN BOILER SPACE 10/20 IN ENGINE SPACE

BEAMS 5x3 x 9/20 ON EVERY FRAME F+A

BULKHEADS 9/20 STIFFENERS 3x3 x 9/20 30' APART VERT-Y 48 HORIZY

PILLARS OF ROUND IRON AS PER G.A. + TO LLOYDS



01277-011883-0115

Amended

Midship Section

Sum II f/s Sun III * 213624 +

Hull Report No. 21461

Amended Midship Section

R/N ~~BY~~ SARAH

011877 - 011883 - 0115



© 2021

Lloyd's Register
Foundation