

27 FEB 1941

N^{os} 681-2 & 689-90-LAN N^o 2D. **RUDDER & STERNFRAME.** SCALES:- 1/2" & 1/2" = 1'-0".



TO B.S. * TESTS.
 SCANTLINGS ON PLAN MUST BE ADHERED TO AS PAYMENT WILL BE ON WEIGHT CALCULATED THEREFROM.

AREA OF RUDDER ABAFT & OF PINTLES. 151 SQ. FT.
 CG. OF " " " " 4 FT.-6 INS.
 LENGTH OF SHIP 410 FT.-0 INS.
 DRAFT " " 25 FT.-10 3/4 INS.
 SPEED " " 12 1/2 KNOTS.

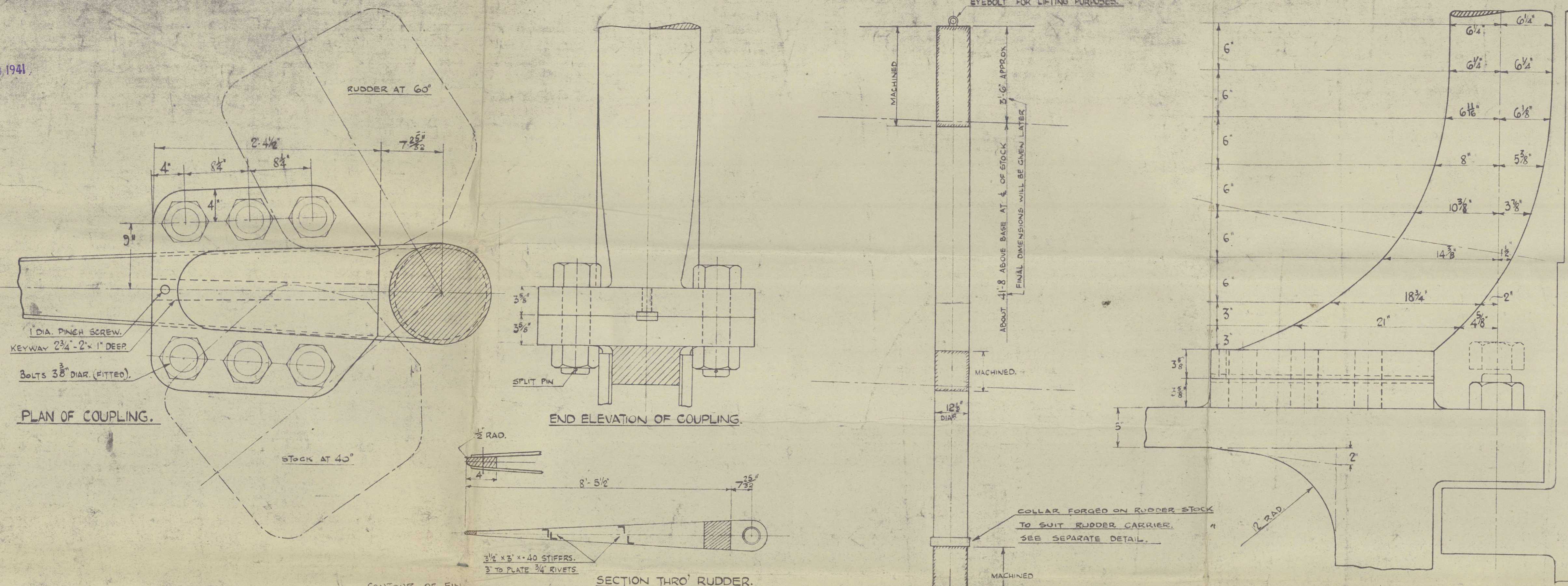
SCANTLINGS INCREASED OVER RULE IN ACCORDANCE WITH MINISTRY OF SHIPPING EMERGENCY REQUIREMENTS.
 AS FOLLOWS:- RUDDER STOCK, 10% OVER RULE; TRANSOM POST, 15% OVER RULE;

STERNFRAME OF CAST STEEL WITH GUDGEONS CAST ON. PATTERNS TO BE INSPECTED BY SHIPBUILDERS REPRESENTATIVE BEFORE WORK IS COMMENCED. FULL SIZE SECTIONS WILL BE SUPPLIED AND SHOULD BE WORKED TO IN PREFERENCE TO FIGURES ON THIS PLAN. ALL APPROXIMATE FIGURES TO BE VERIFIED BEFORE WORK IS COMMENCED. ALL RIVET HOLES TO BE DRILLED BY MAKERS AT THEIR WORKS TO INFORMATION ON THIS PLAN. CENTRE LINE OF SHIP TO BE CUT AT BOTTOM & BACK OF CASTING & AT POINTS OF ALL WEBS. LINE OF CENTRE OF SHIP TO BE CUT IN A LONG BOTTOM & BACK OF STERNFRAME AND AT POINTS OF ALL WEBS & MAKERS AT THEIR WORKS.

RUDDER FRAME OF CAST STEEL WITH PINTLE BOSSES CAST ON. FOR EXACT POSITION OF RUDDER ARMS A BATTEN WILL BE SUPPLIED BY SHIPBUILDERS, GIVING EXACT POSITIONS OF PINTLE BOSSES, ALSO LENGTHS ETC. OF RUDDER STOCK. ALL RIVET HOLES TO BE DRILLED BY MAKERS AT THEIR WORKS TO INFORMATION ON THIS PLAN.

RUDDER STOCK OF FORGED INGOT STEEL TO BE MACHINED AS NECESSARY IN WAY OF QUADRANT ETC.

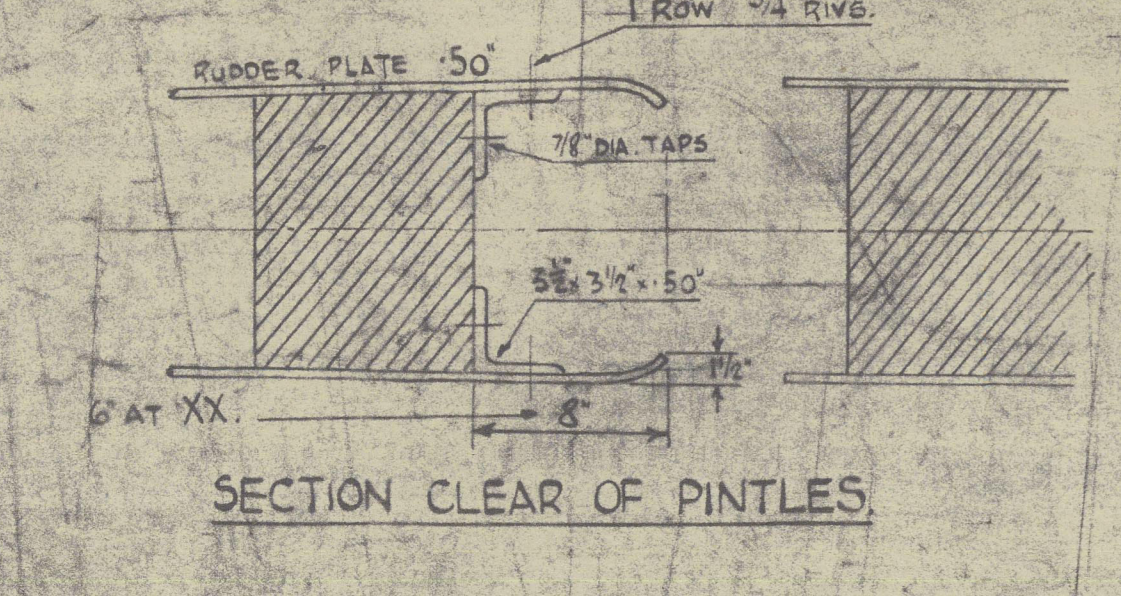
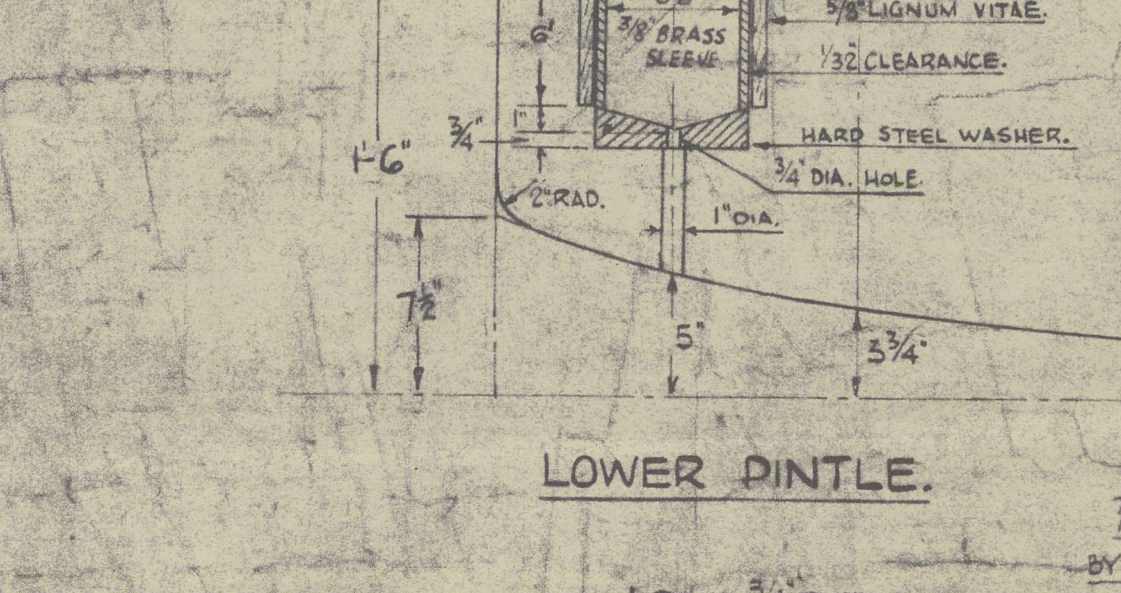
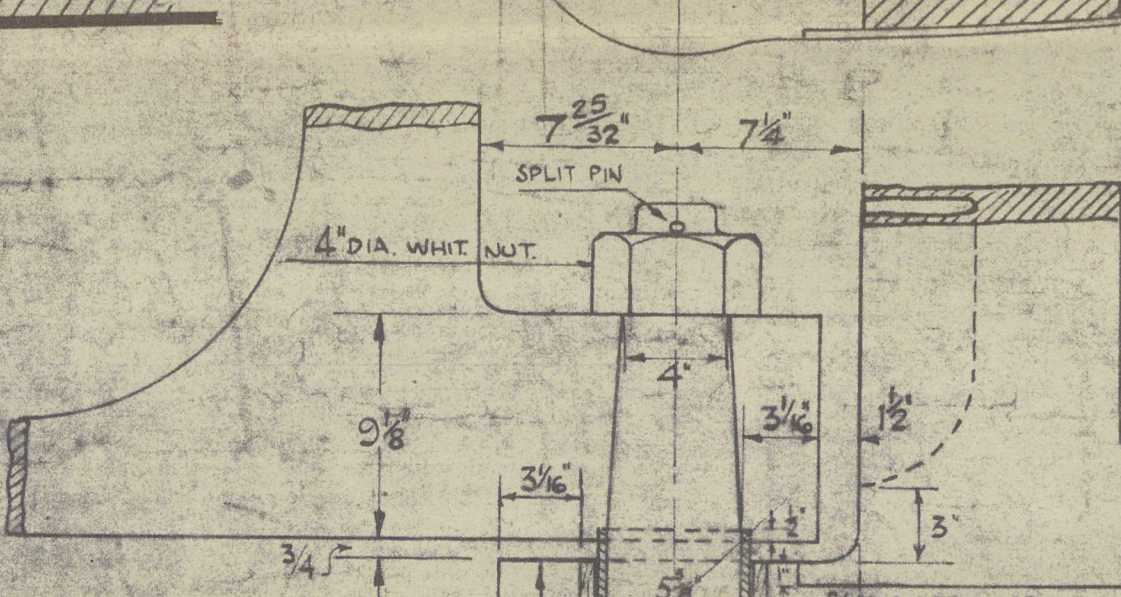
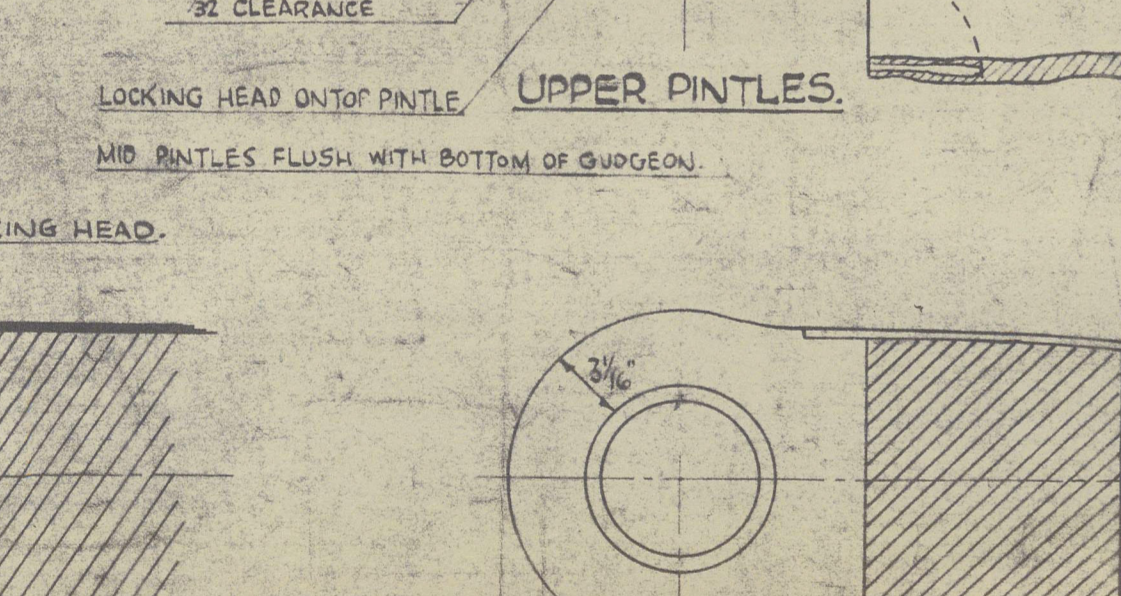
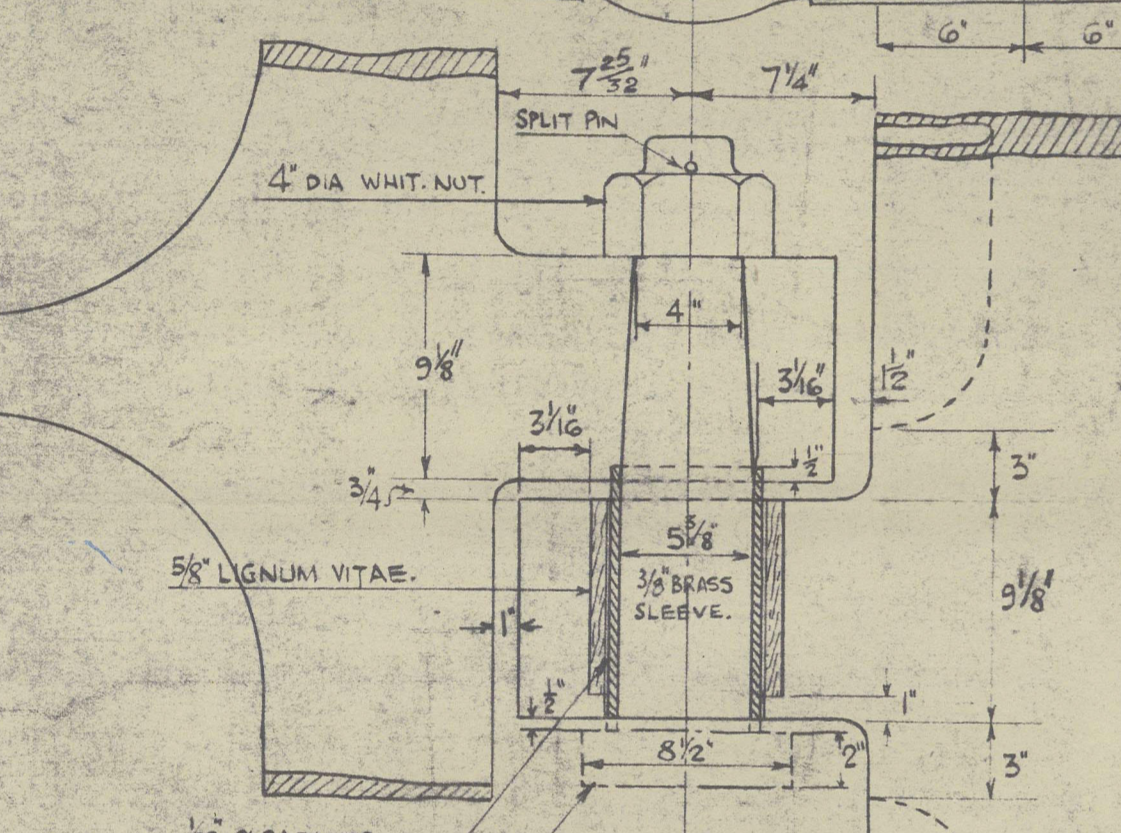
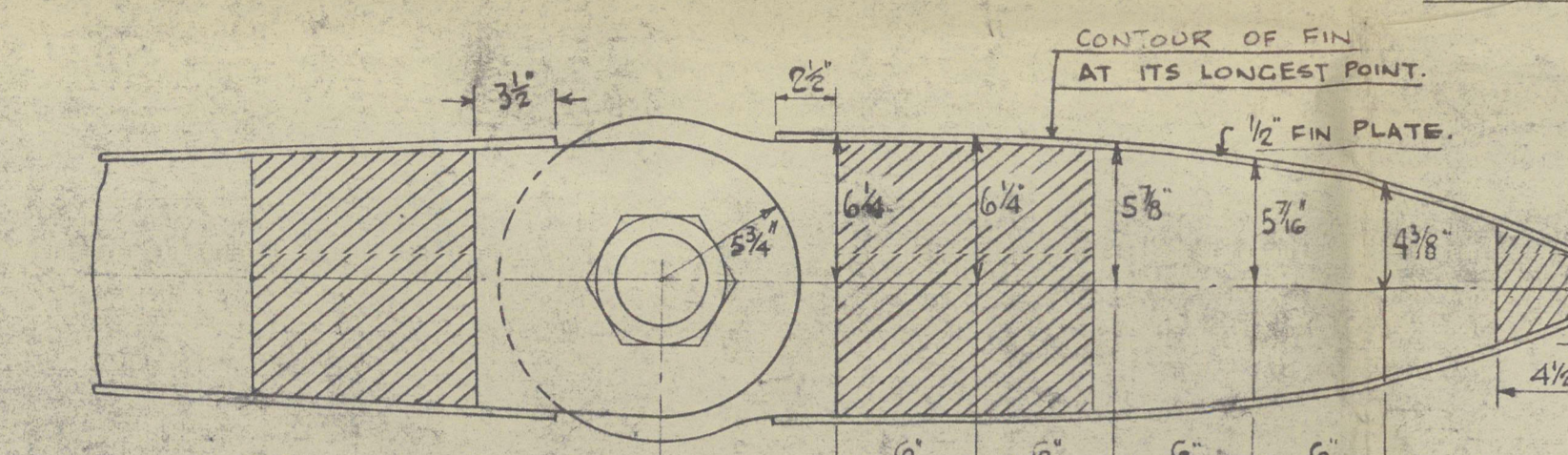
PINTLES, WITH NUTS, BRASS SLEEVES & SPLIT PINS WILL BE SUPPLIED BY RUDDER MAKERS.
 LIGNUM VITAE BUSHES & HARD STEEL DISC WILL BE SUPPLIED BY STERNFRAME MAKERS.



NOTE:- MINISTRY OF SHIPPING INCREASES INCLUDE:-
 RUDDER STOCK INCREASED 10% IN LENGTH OVER RULE.
 TRANSOM POST > RULE LENGTH + 15%
 SCANTLINGS OF RUDDER PARTS IN PROPORTION TO INCREASED RUDDER STOCK ACCORDING TO RULE.

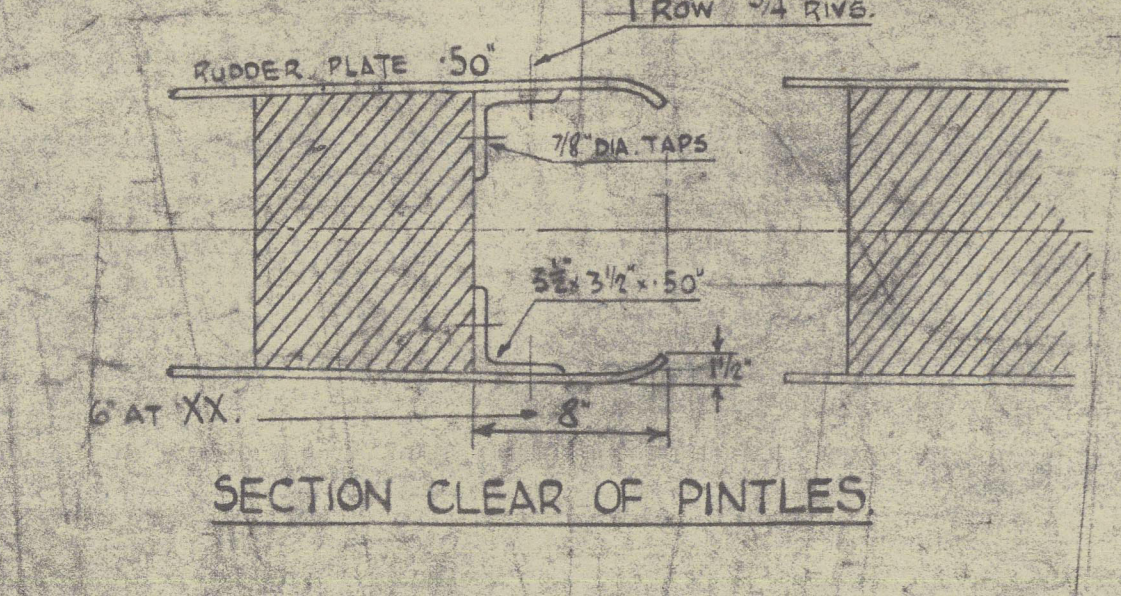
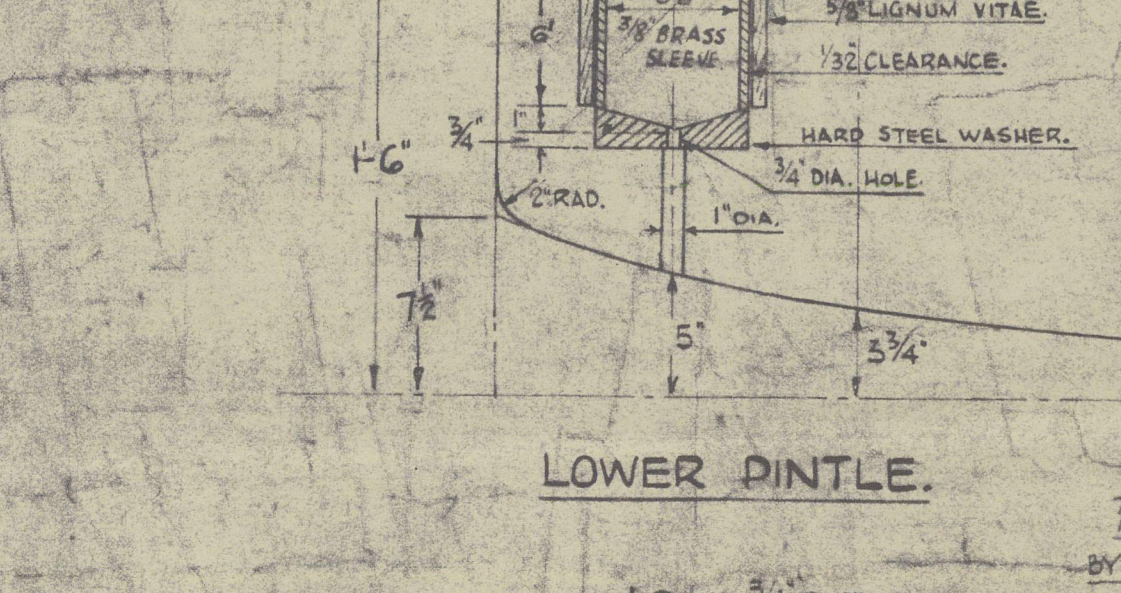
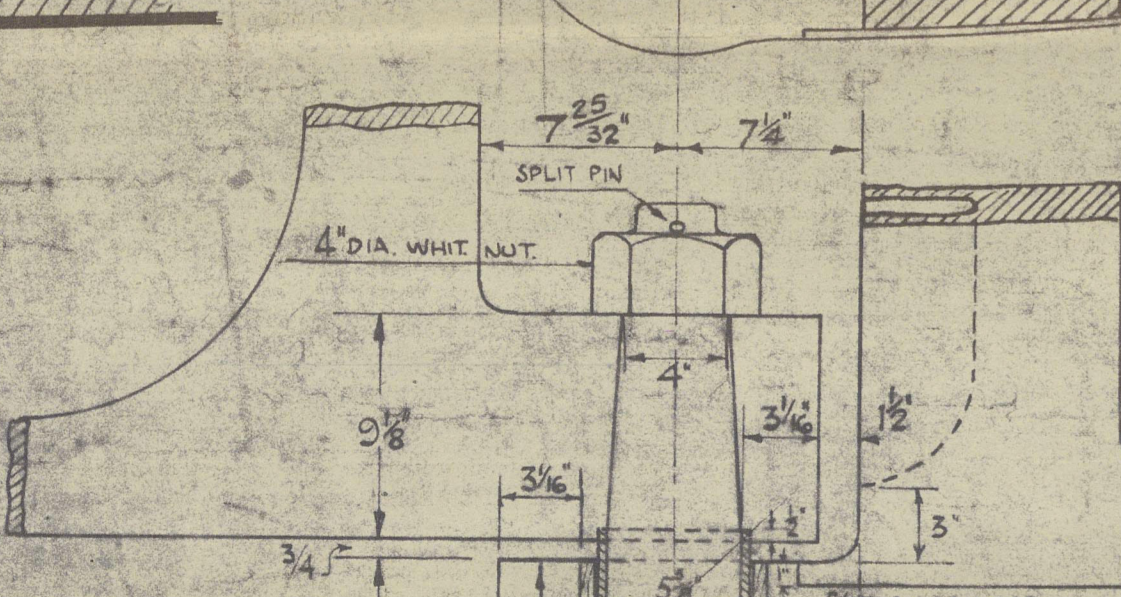
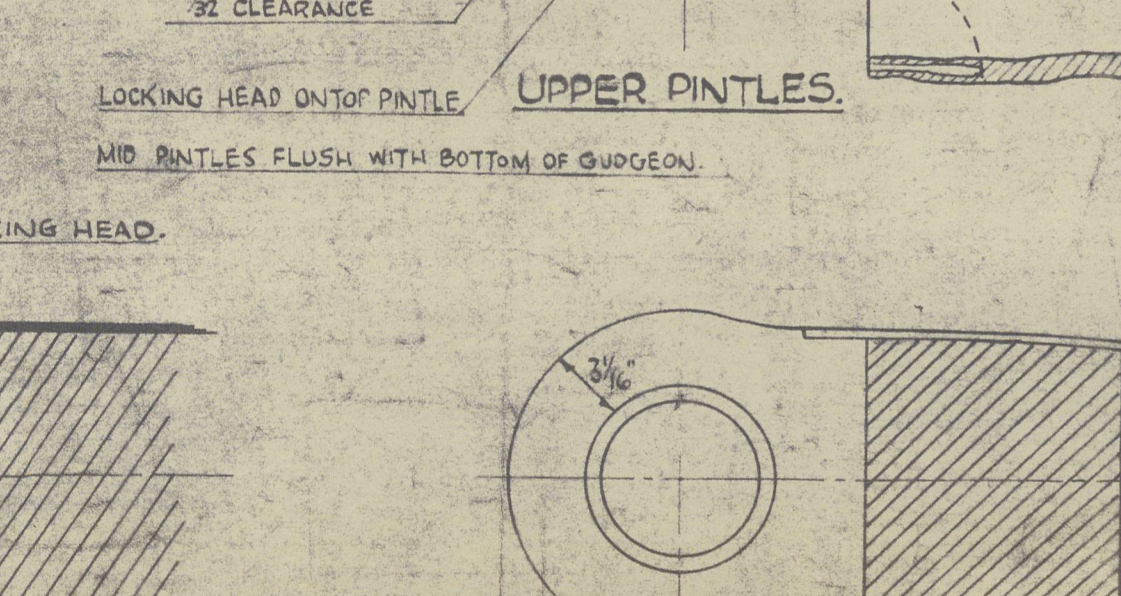
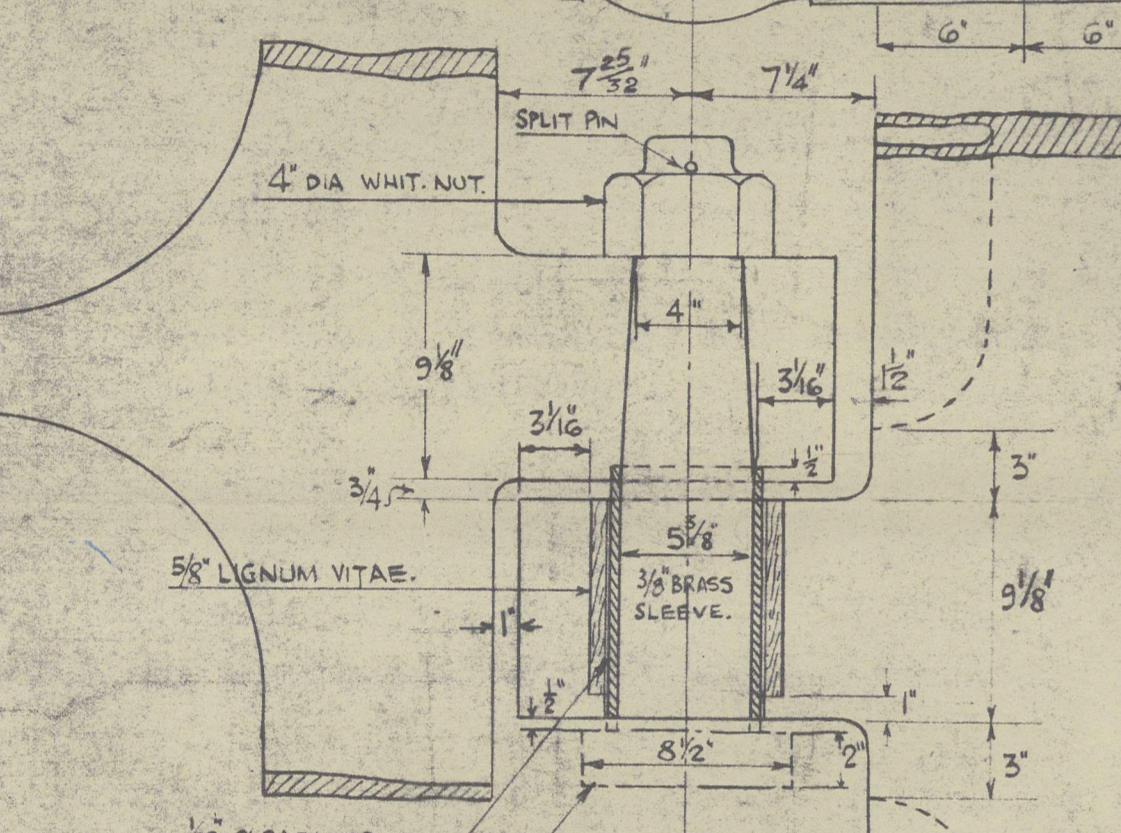
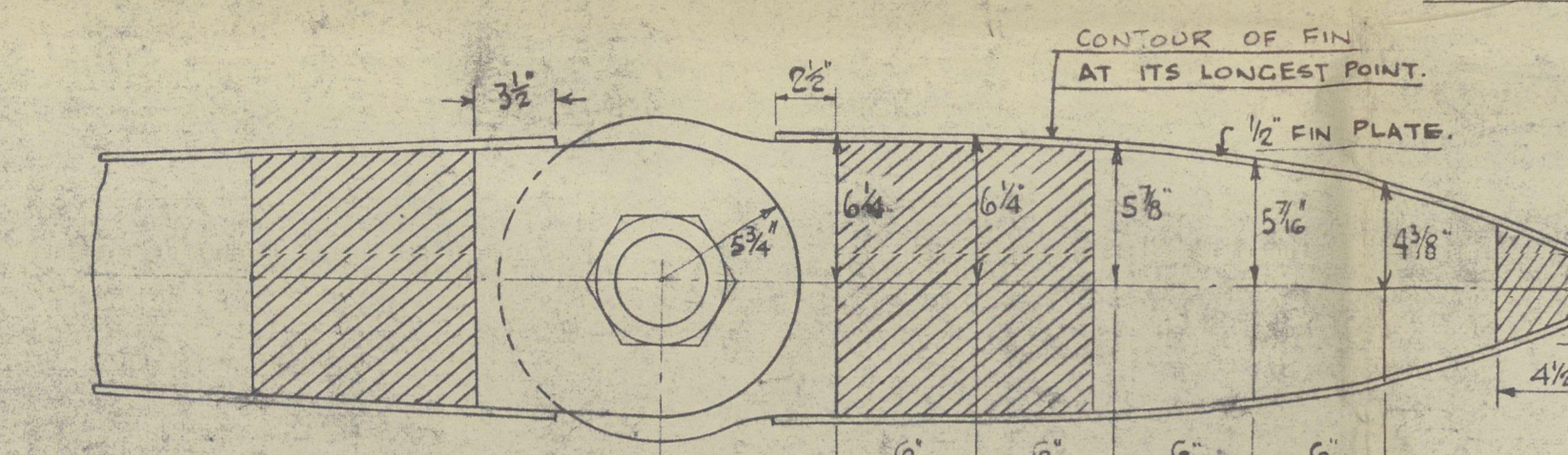
ALL RIVETS TO HAVE COUNTERSUNK HEADS AND TO FINISH FLUSH WITH RESPECTIVE SURFACES WHERE THICKNESS OF RUDDER CASTING EXCEEDS 5" RIVET HOLES 2 3/4" SUITABLE FOR 7/8" DIAM. FITTED RIVETS. WHERE LESS THAN 5" RIVET HOLES TO BE 3/4" FOR 7/8" DIAM. RIVETS.

RUDDER TO BE COATED WITH BITUMINOUS COMPOSITION.



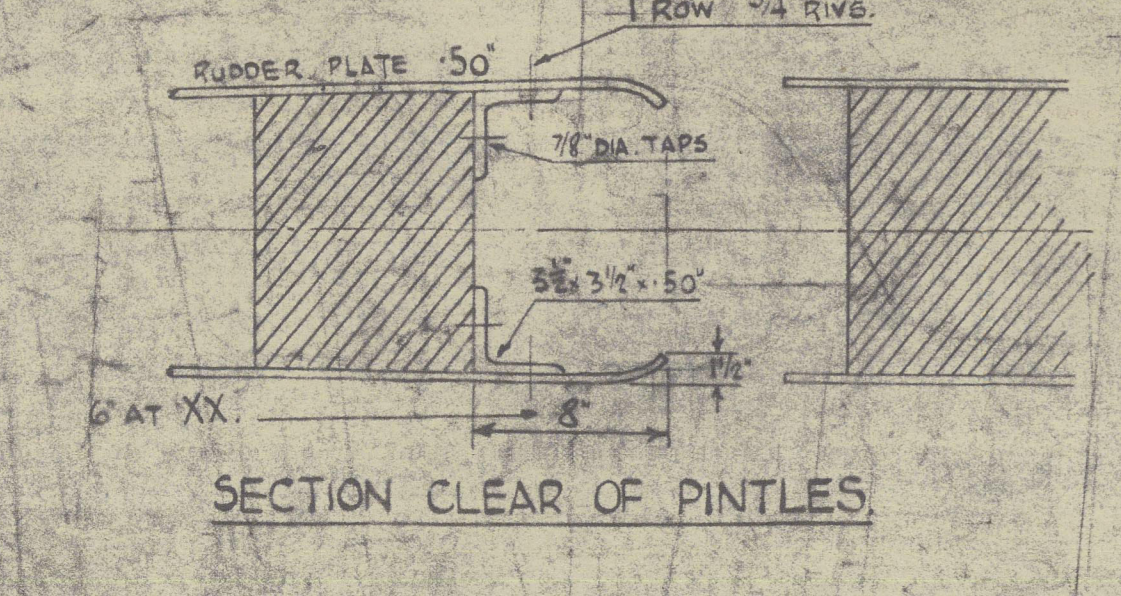
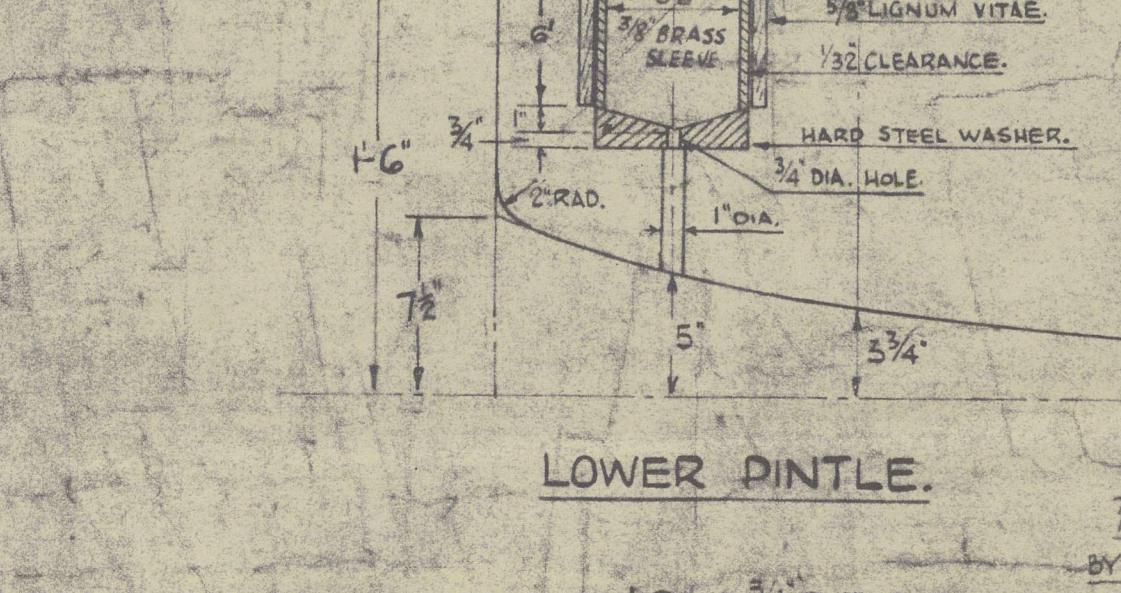
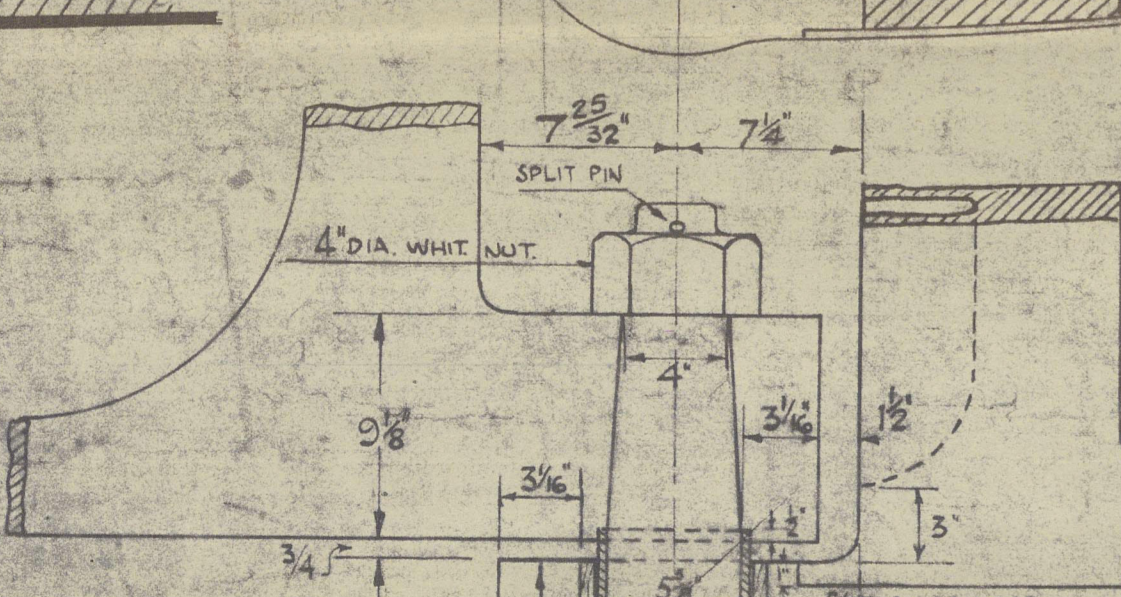
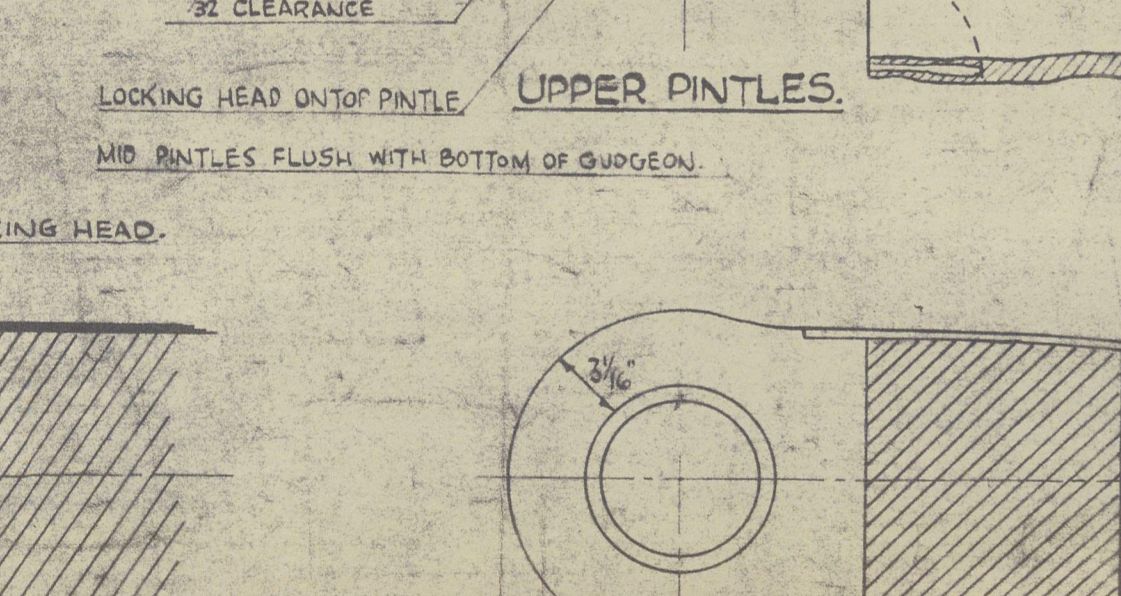
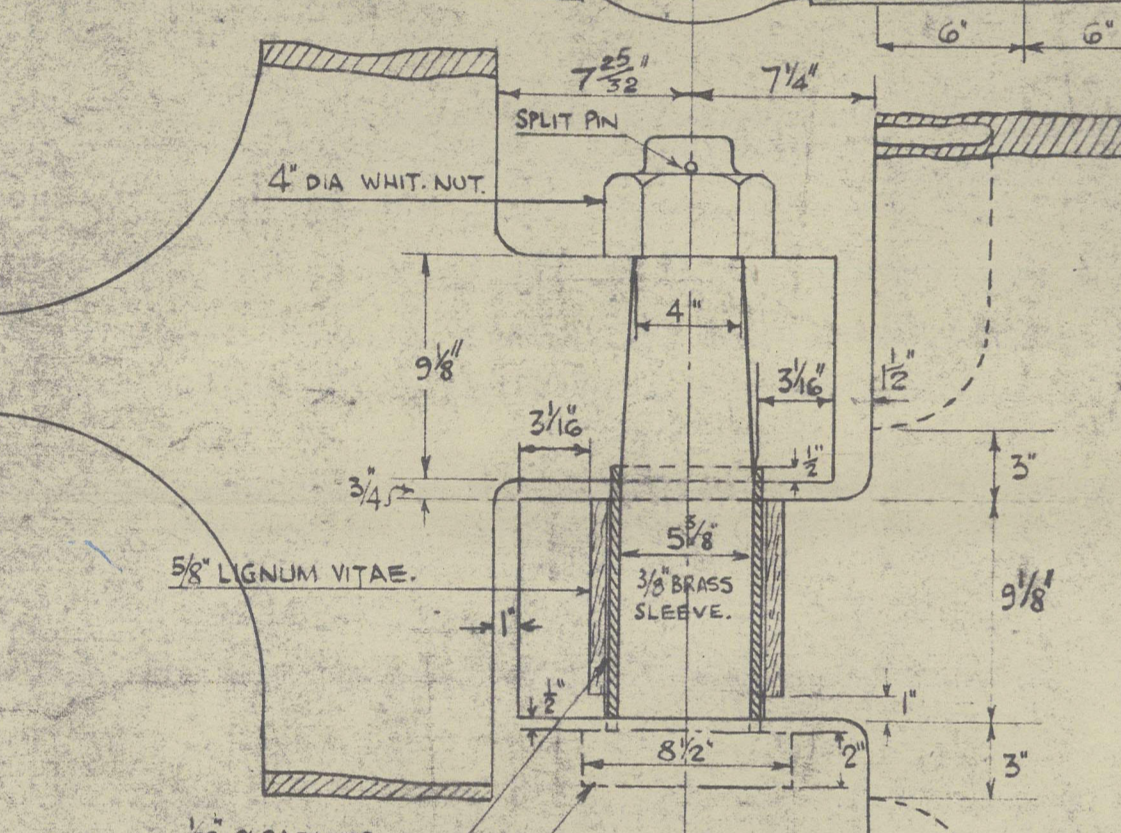
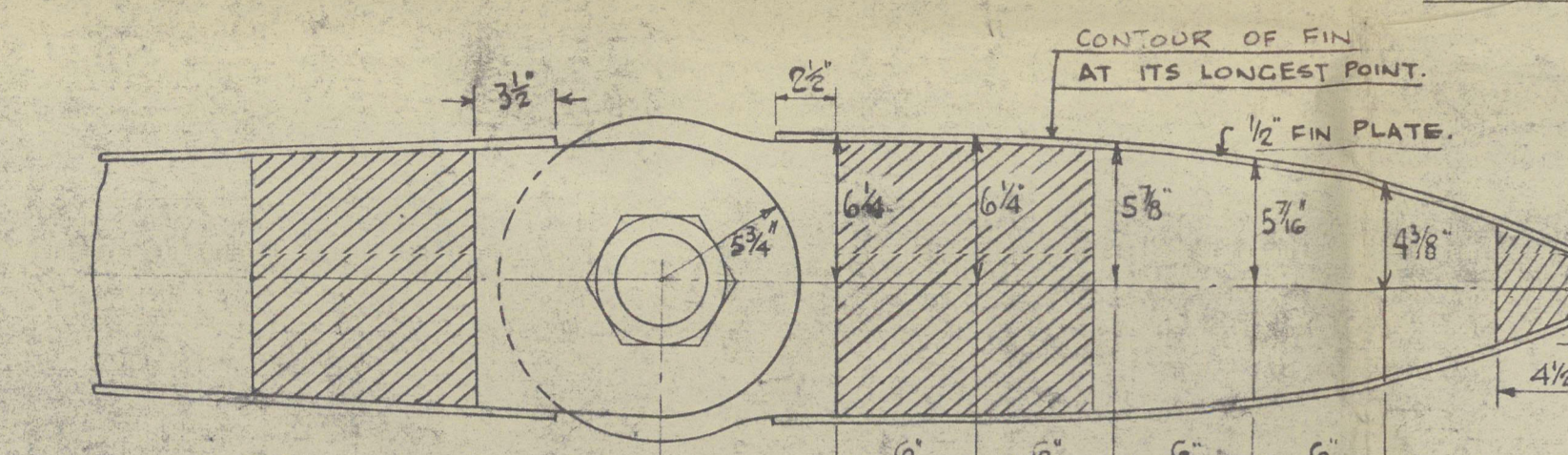
ALL RIVETS TO HAVE COUNTERSUNK HEADS AND TO FINISH FLUSH WITH RESPECTIVE SURFACES WHERE THICKNESS OF RUDDER CASTING EXCEEDS 5" RIVET HOLES 2 3/4" SUITABLE FOR 7/8" DIAM. FITTED RIVETS. WHERE LESS THAN 5" RIVET HOLES TO BE 3/4" FOR 7/8" DIAM. RIVETS.

RUDDER TO BE COATED WITH BITUMINOUS COMPOSITION.



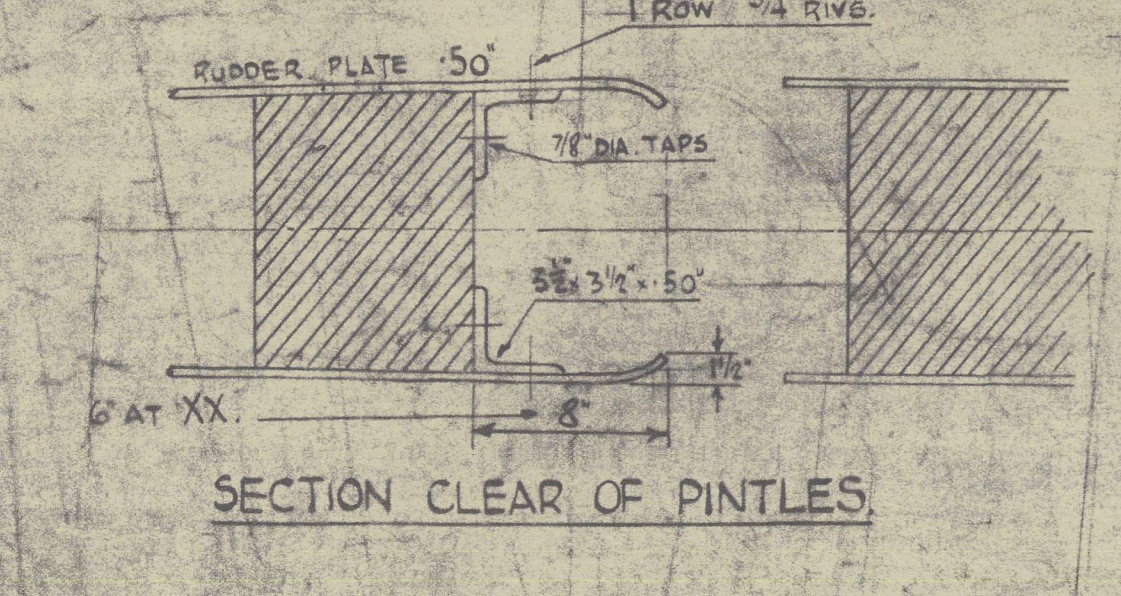
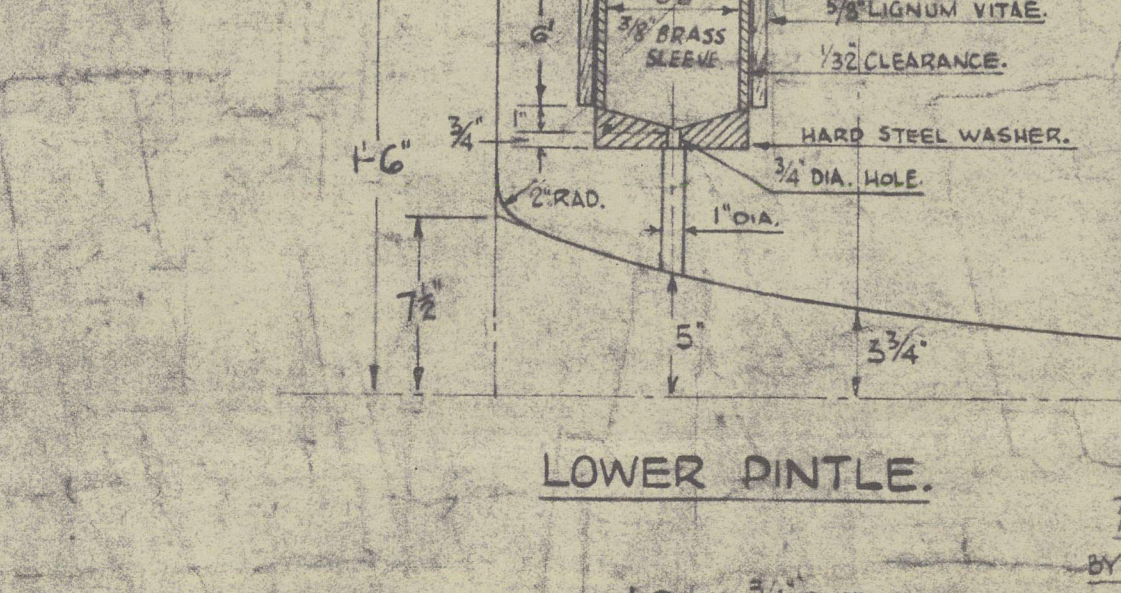
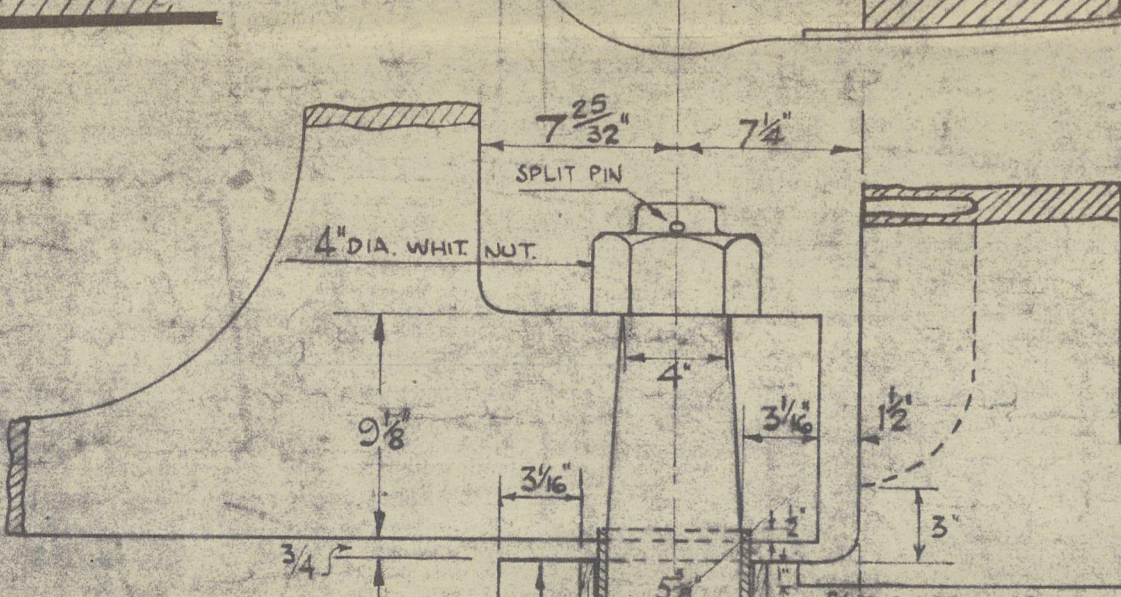
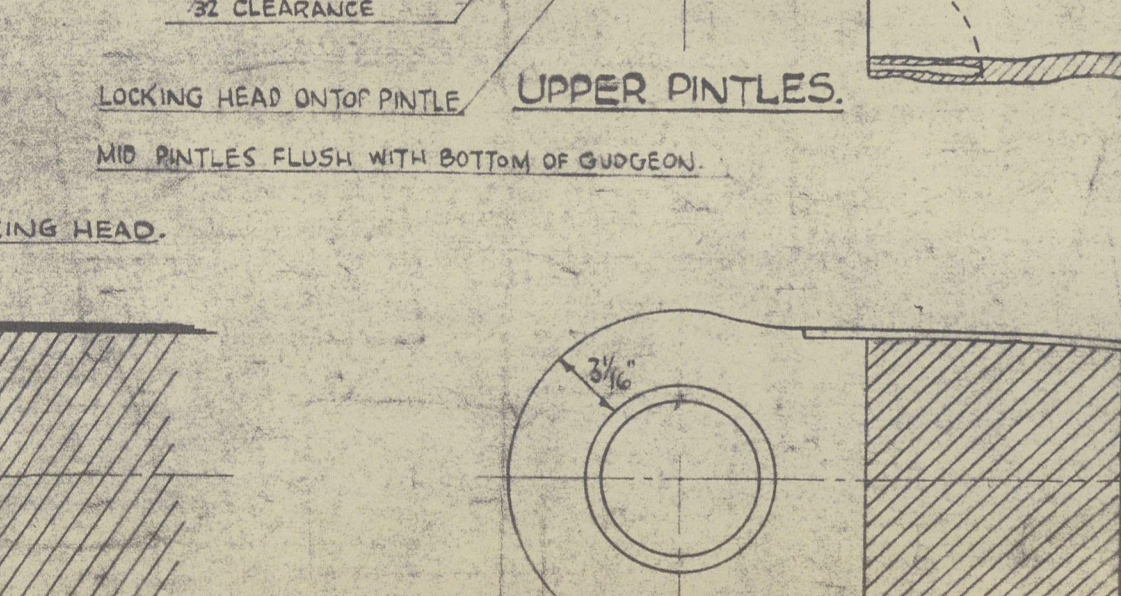
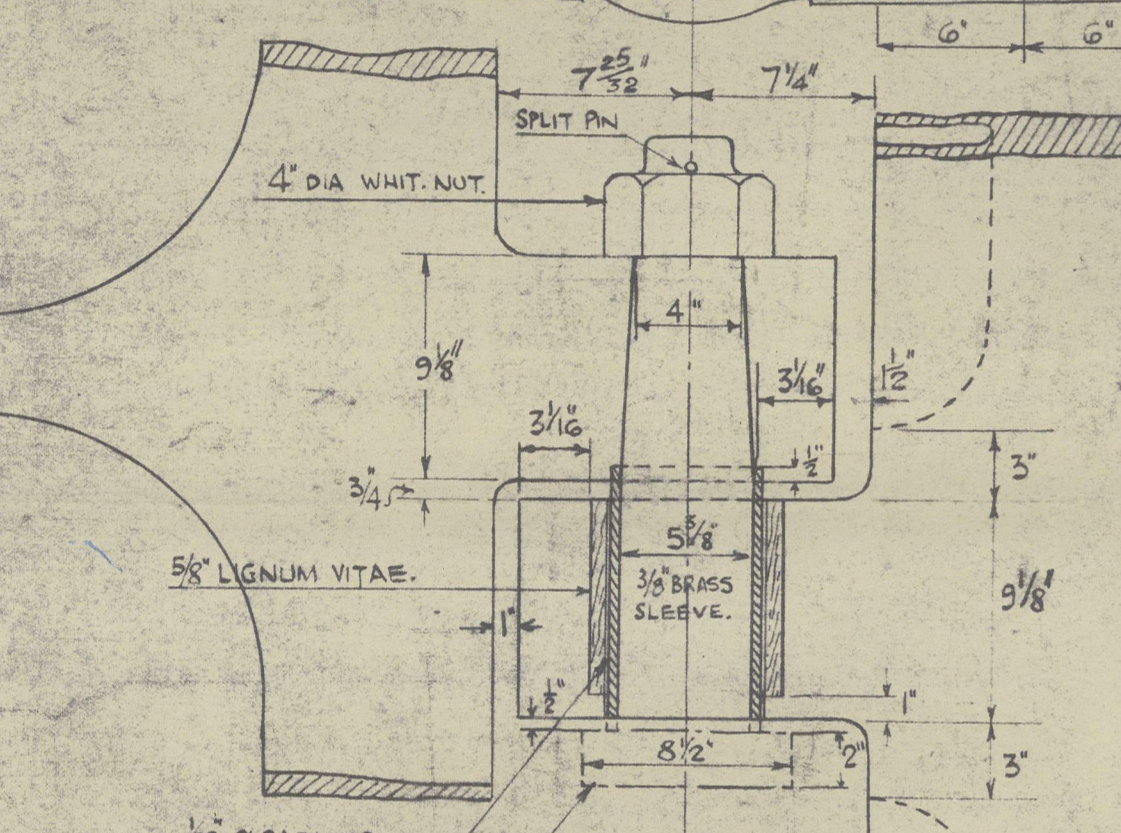
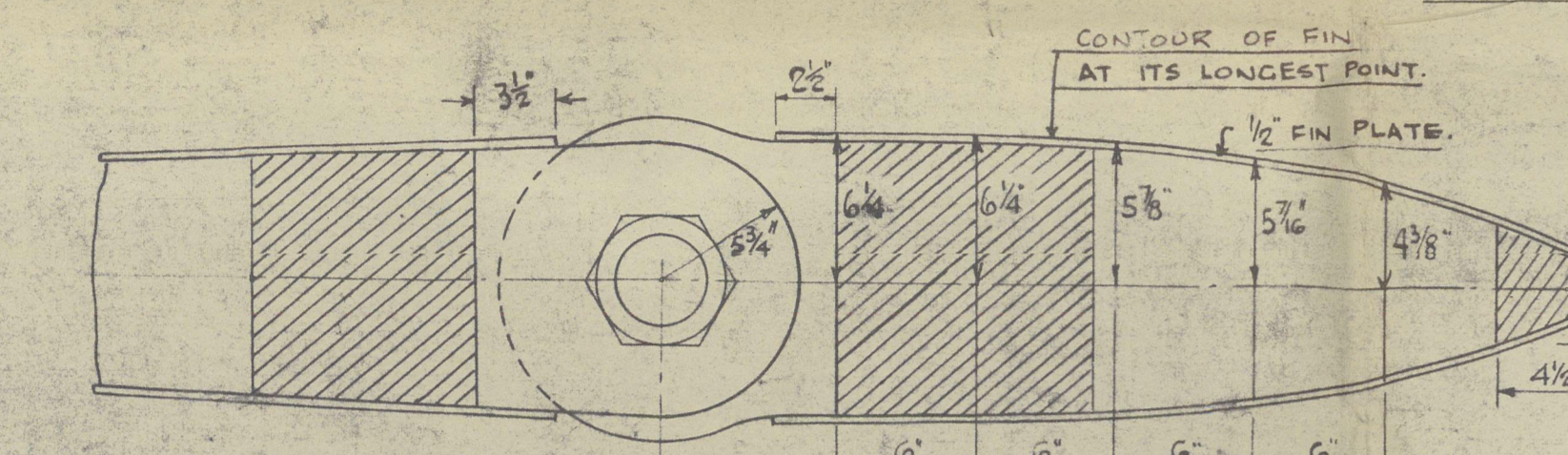
ALL RIVETS TO HAVE COUNTERSUNK HEADS AND TO FINISH FLUSH WITH RESPECTIVE SURFACES WHERE THICKNESS OF RUDDER CASTING EXCEEDS 5" RIVET HOLES 2 3/4" SUITABLE FOR 7/8" DIAM. FITTED RIVETS. WHERE LESS THAN 5" RIVET HOLES TO BE 3/4" FOR 7/8" DIAM. RIVETS.

RUDDER TO BE COATED WITH BITUMINOUS COMPOSITION.



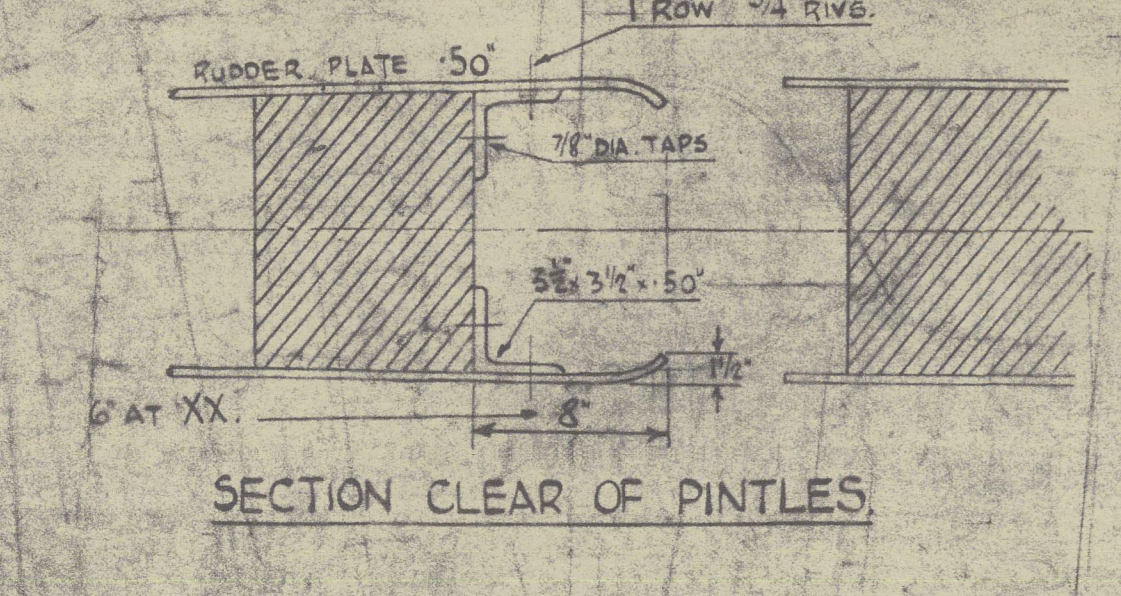
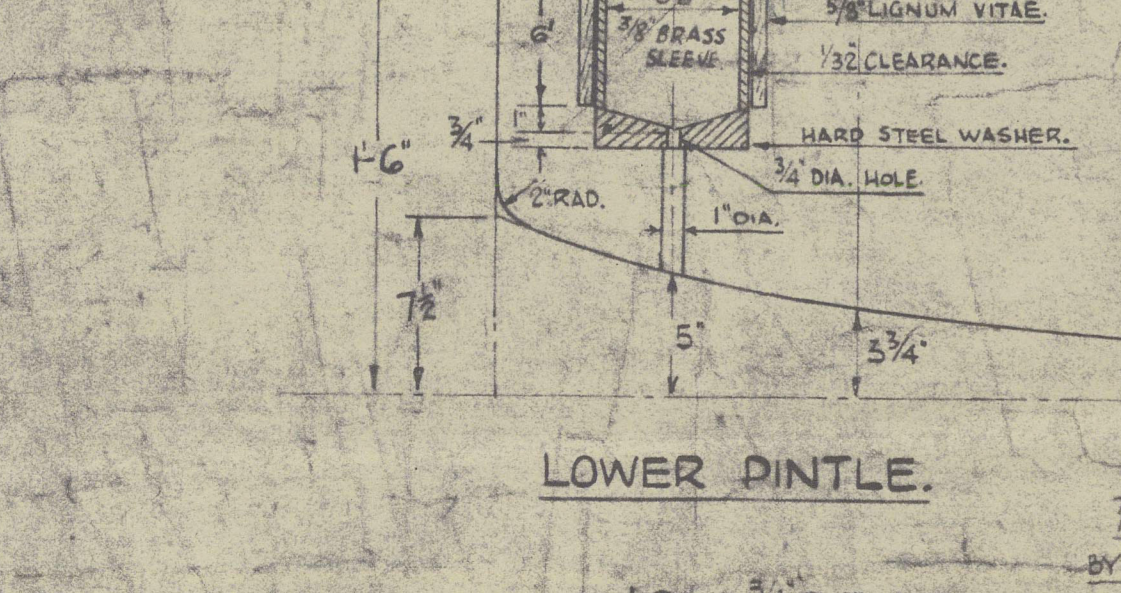
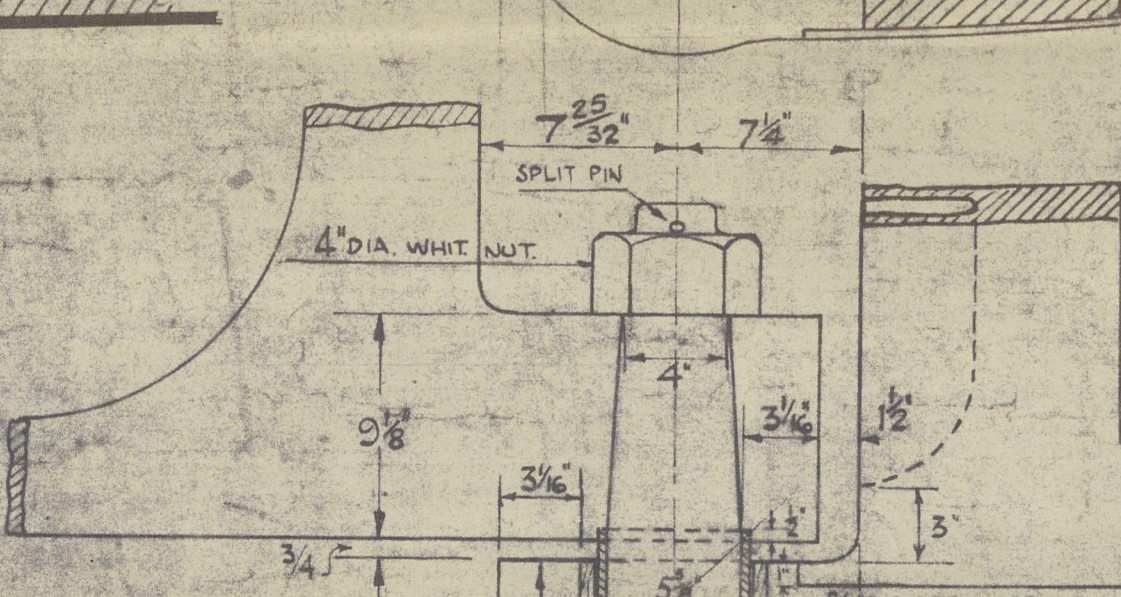
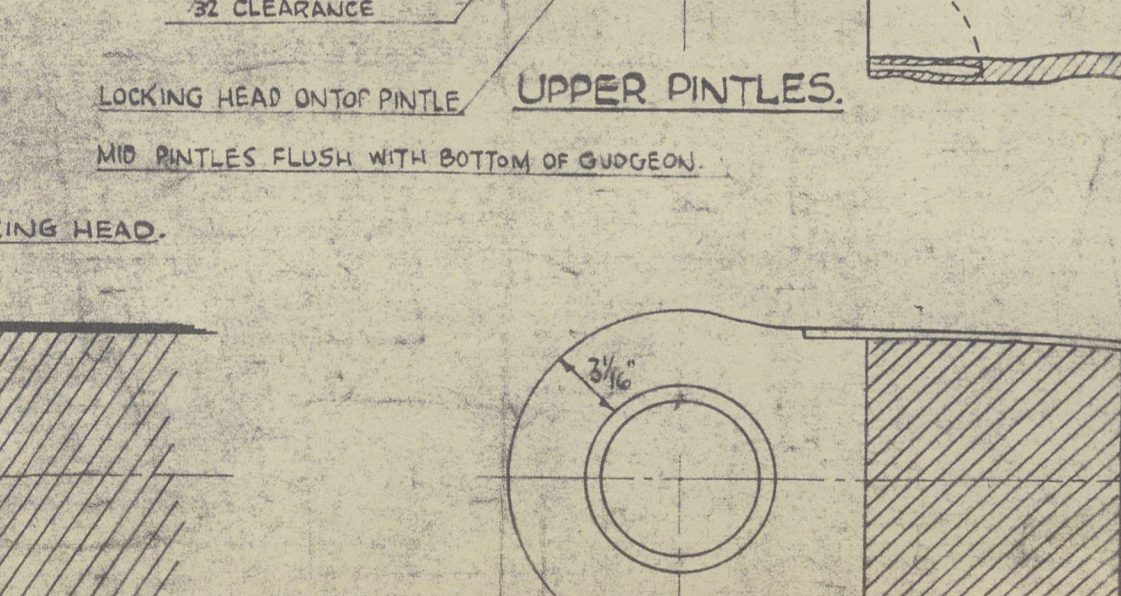
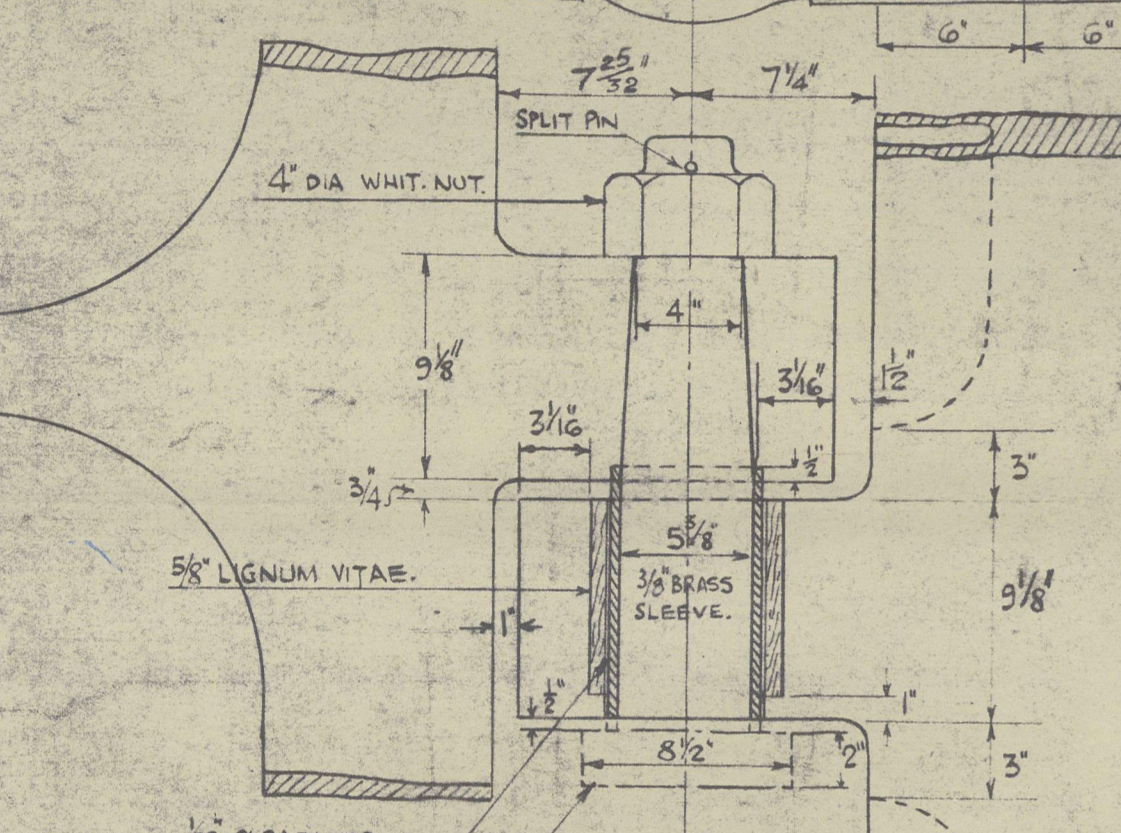
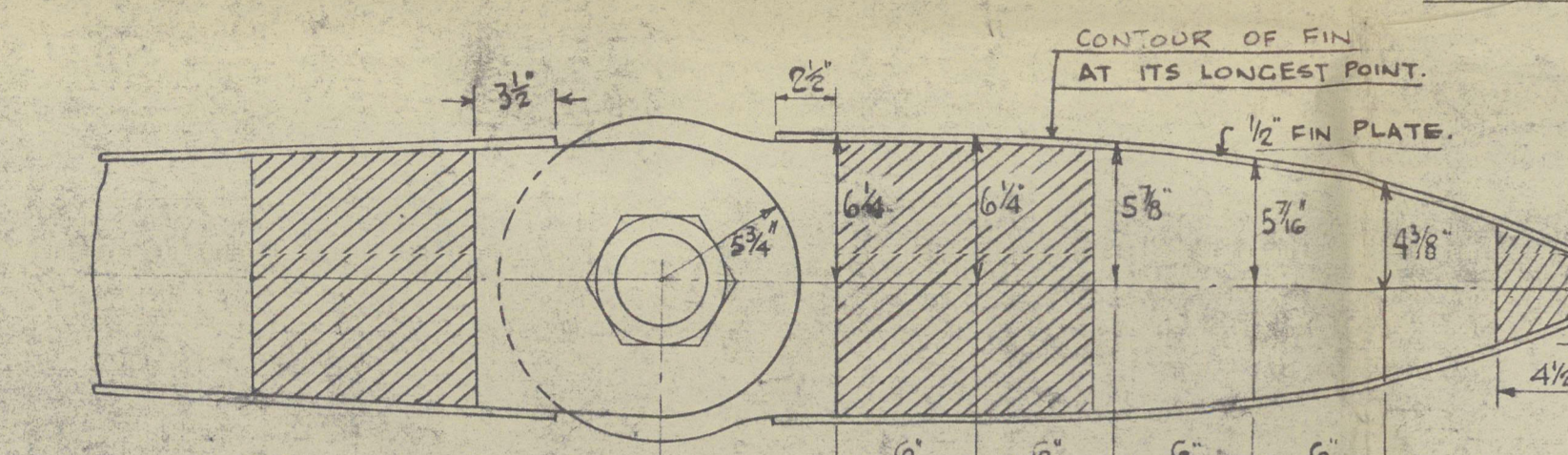
ALL RIVETS TO HAVE COUNTERSUNK HEADS AND TO FINISH FLUSH WITH RESPECTIVE SURFACES WHERE THICKNESS OF RUDDER CASTING EXCEEDS 5" RIVET HOLES 2 3/4" SUITABLE FOR 7/8" DIAM. FITTED RIVETS. WHERE LESS THAN 5" RIVET HOLES TO BE 3/4" FOR 7/8" DIAM. RIVETS.

RUDDER TO BE COATED WITH BITUMINOUS COMPOSITION.



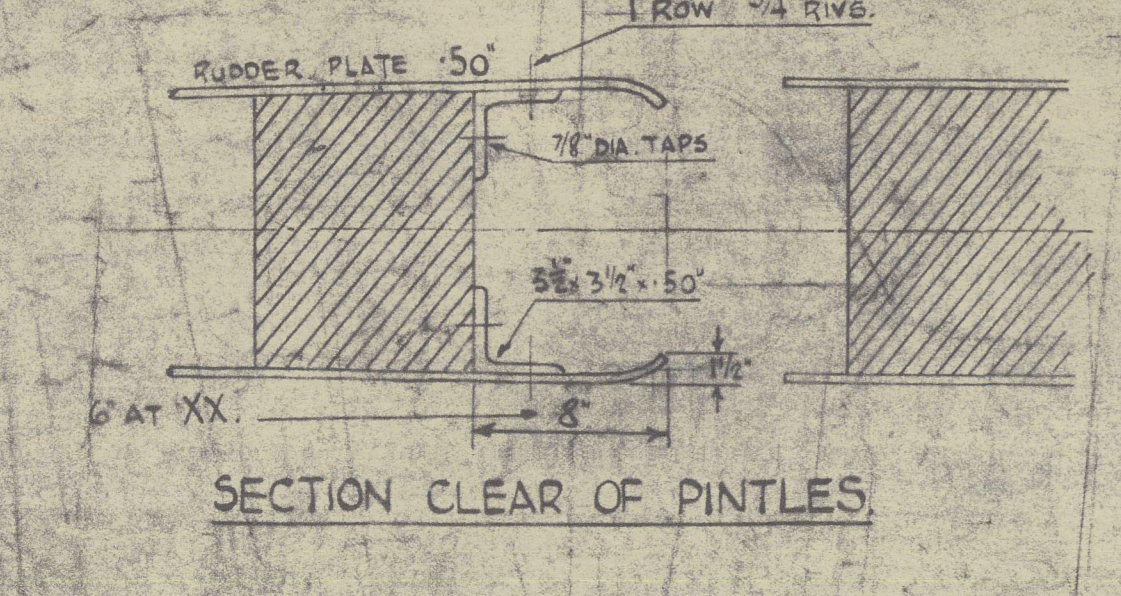
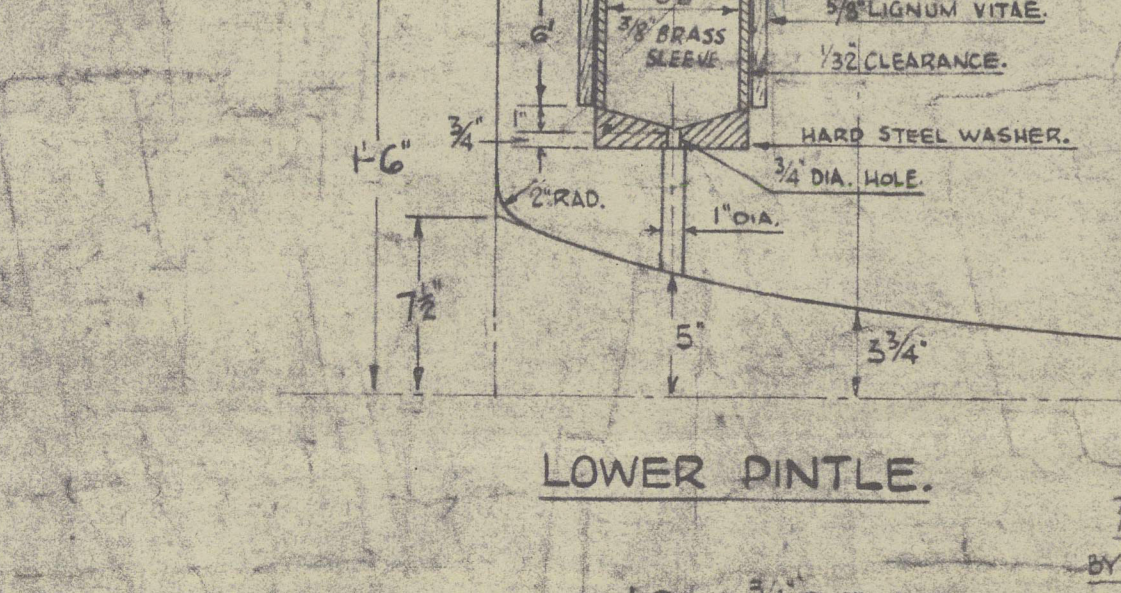
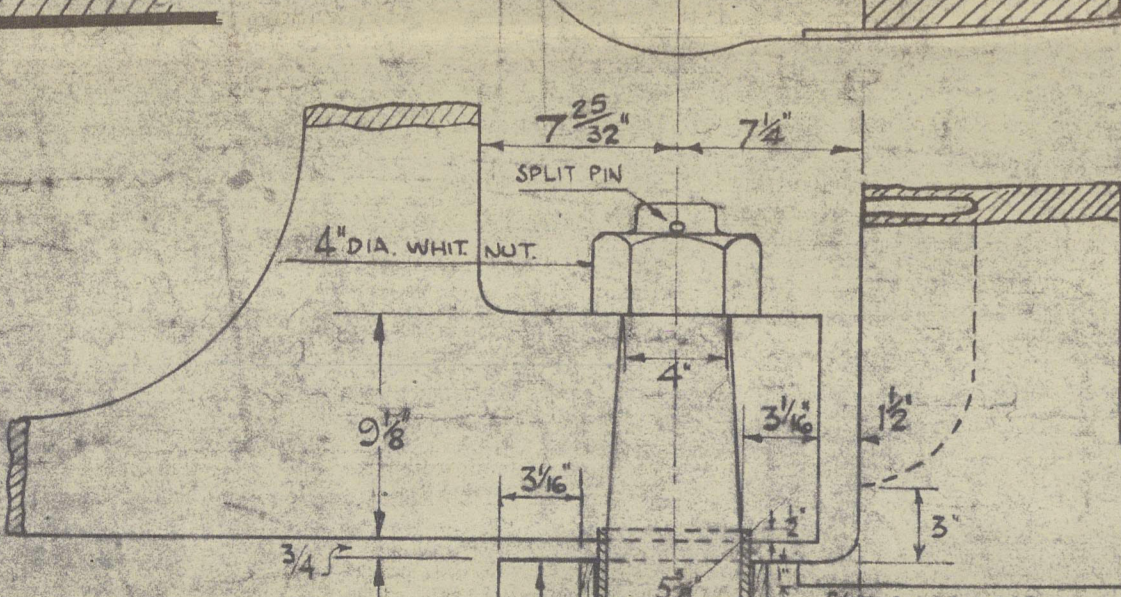
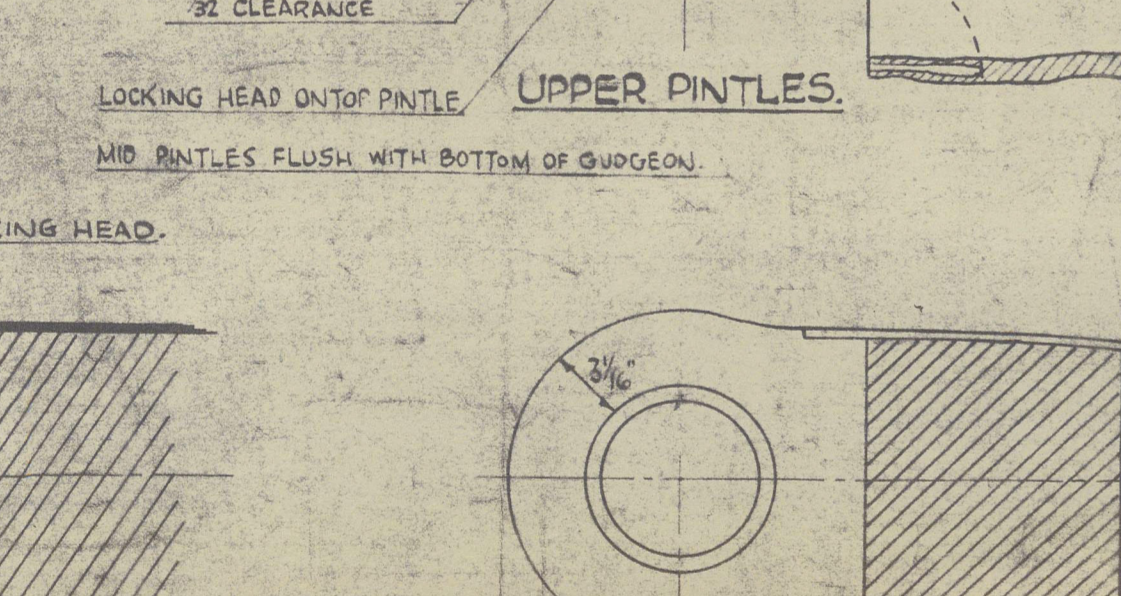
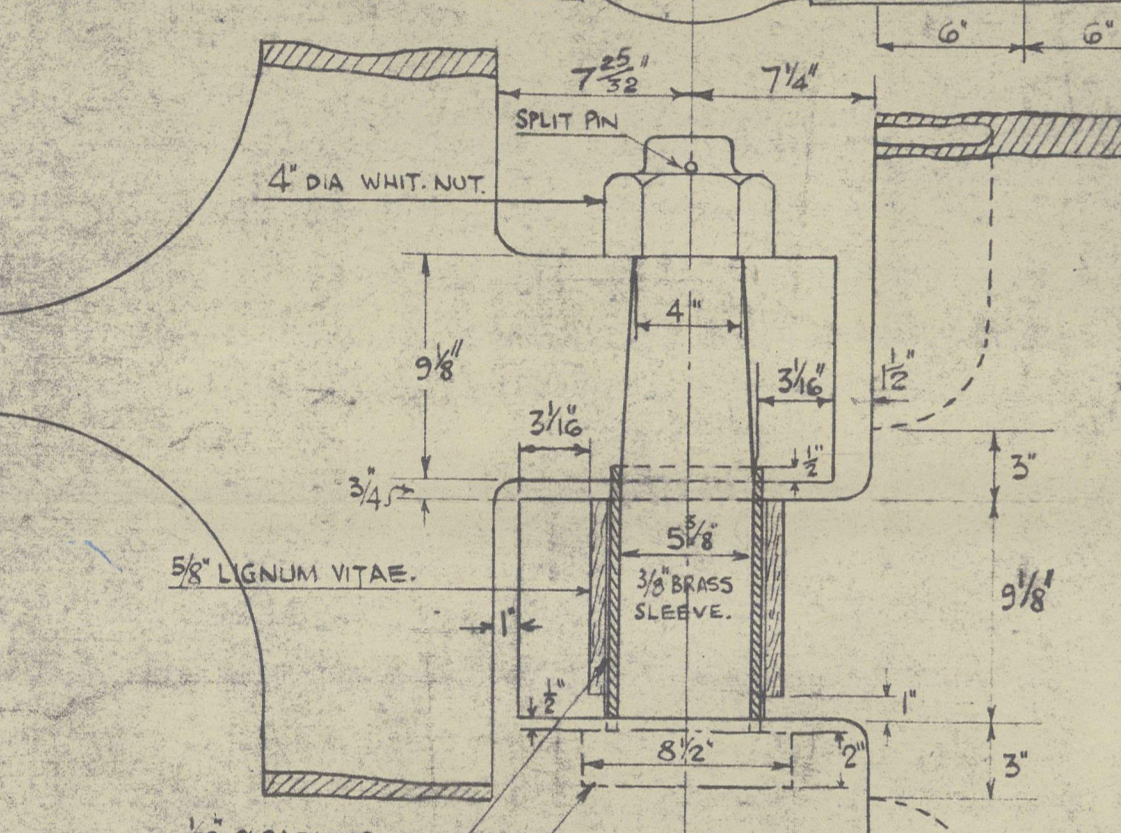
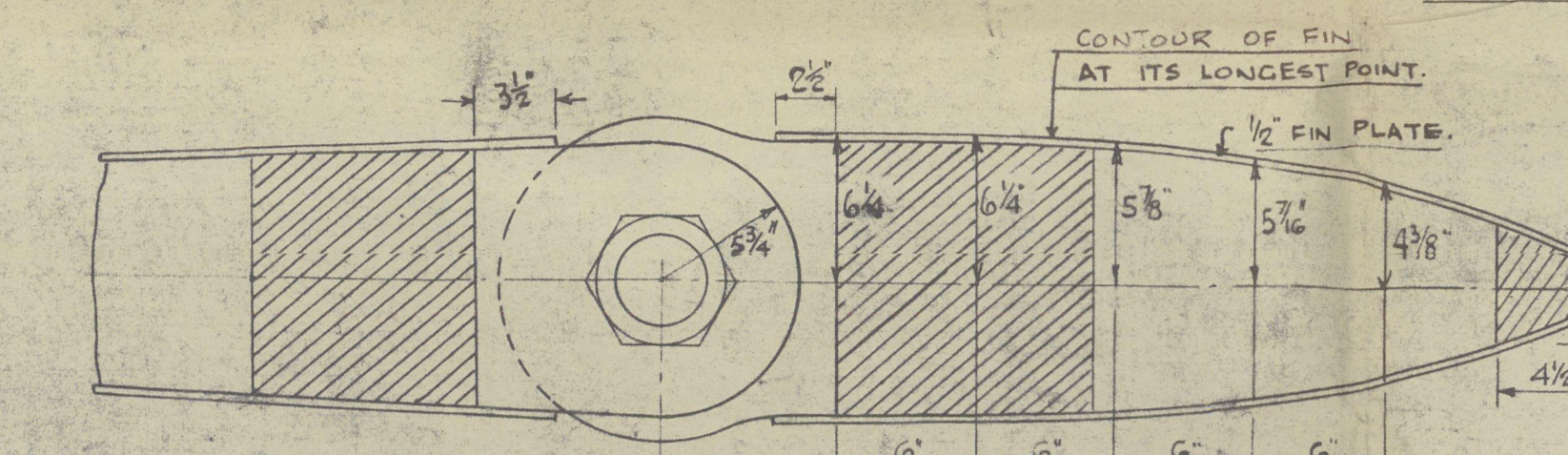
ALL RIVETS TO HAVE COUNTERSUNK HEADS AND TO FINISH FLUSH WITH RESPECTIVE SURFACES WHERE THICKNESS OF RUDDER CASTING EXCEEDS 5" RIVET HOLES 2 3/4" SUITABLE FOR 7/8" DIAM. FITTED RIVETS. WHERE LESS THAN 5" RIVET HOLES TO BE 3/4" FOR 7/8" DIAM. RIVETS.

RUDDER TO BE COATED WITH BITUMINOUS COMPOSITION.



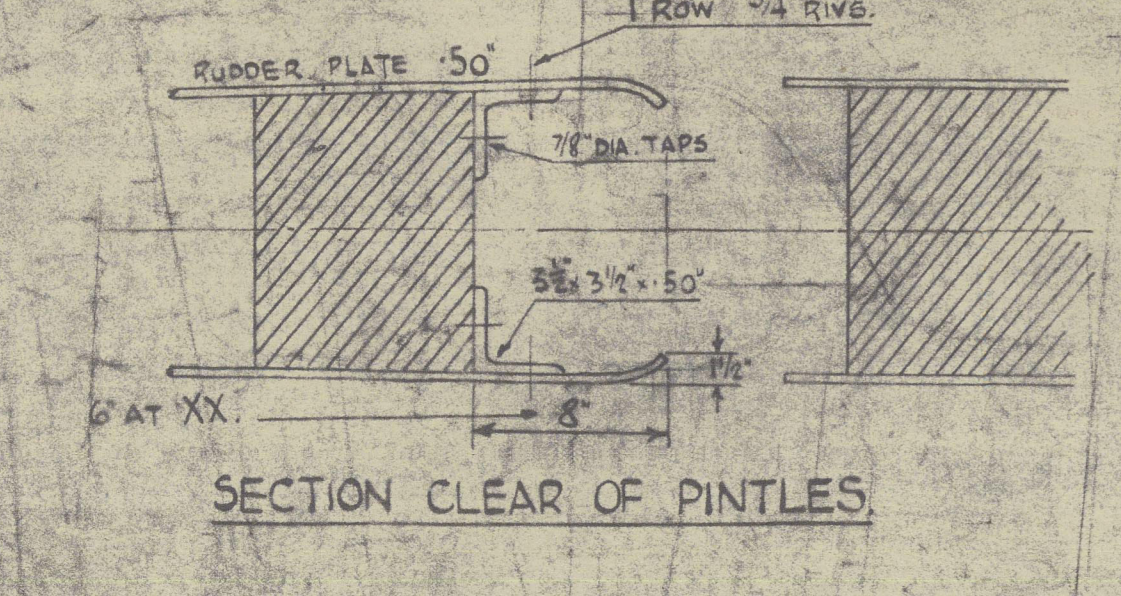
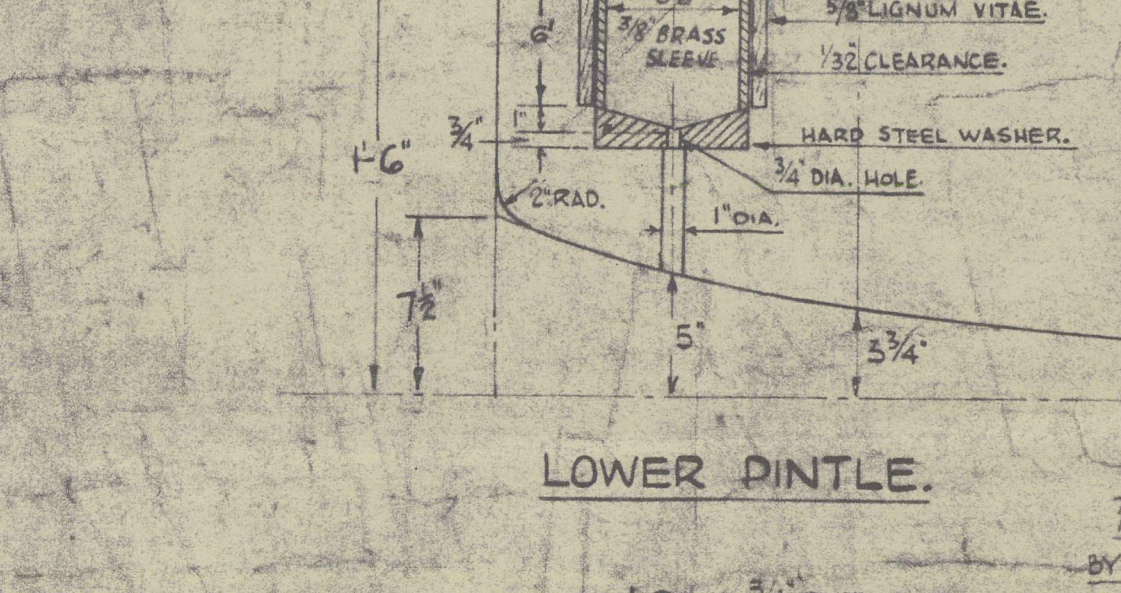
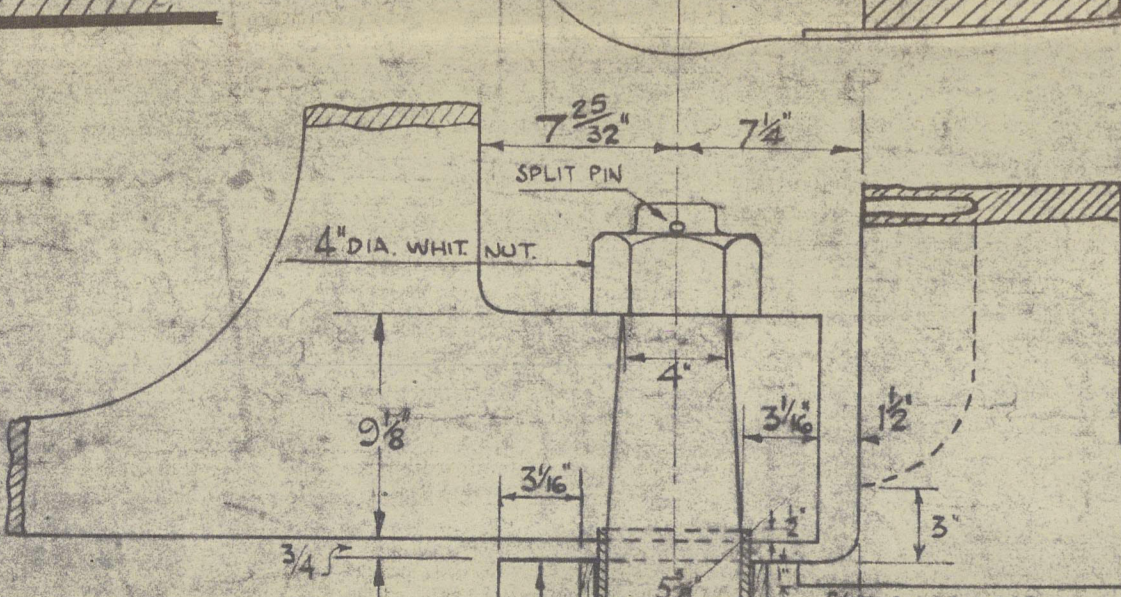
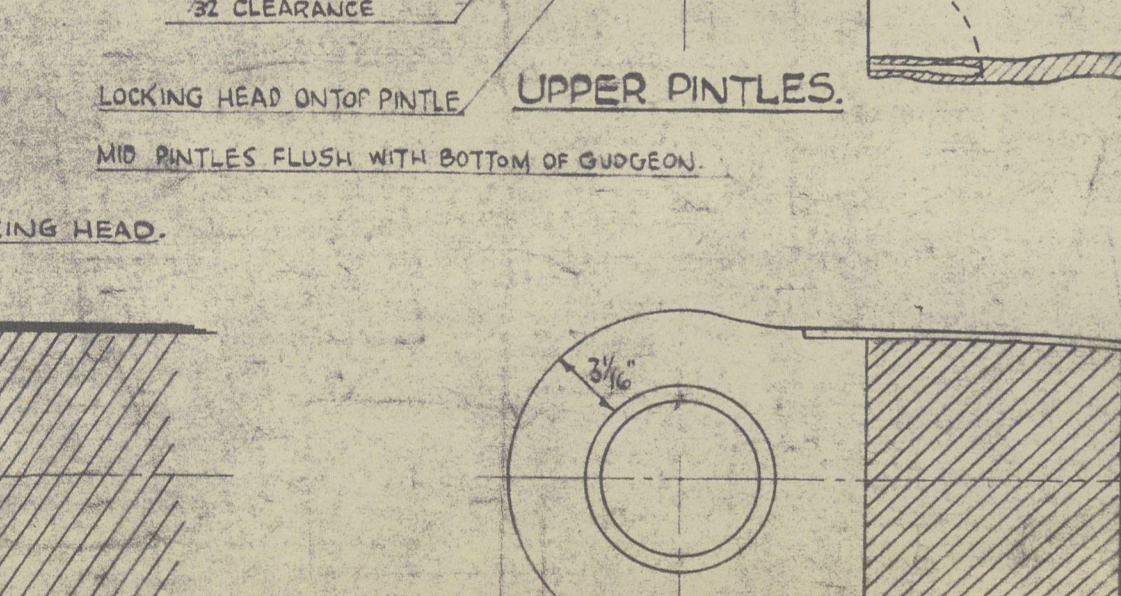
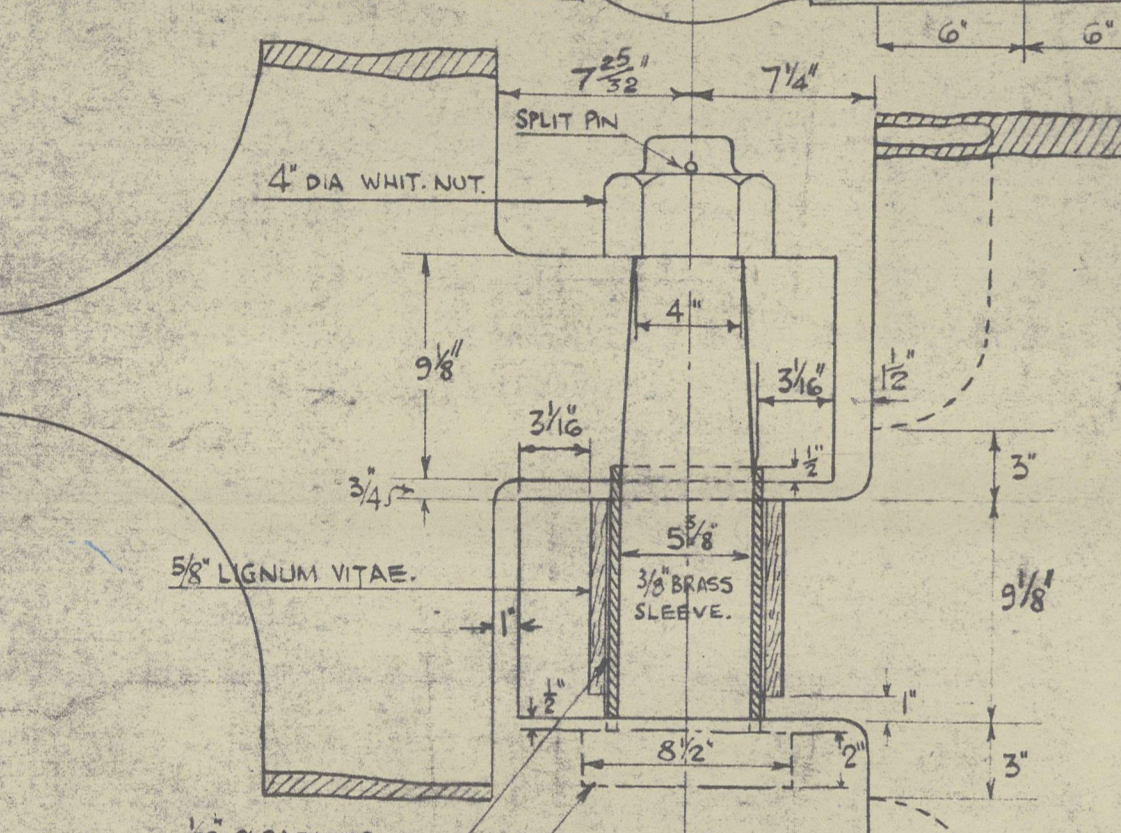
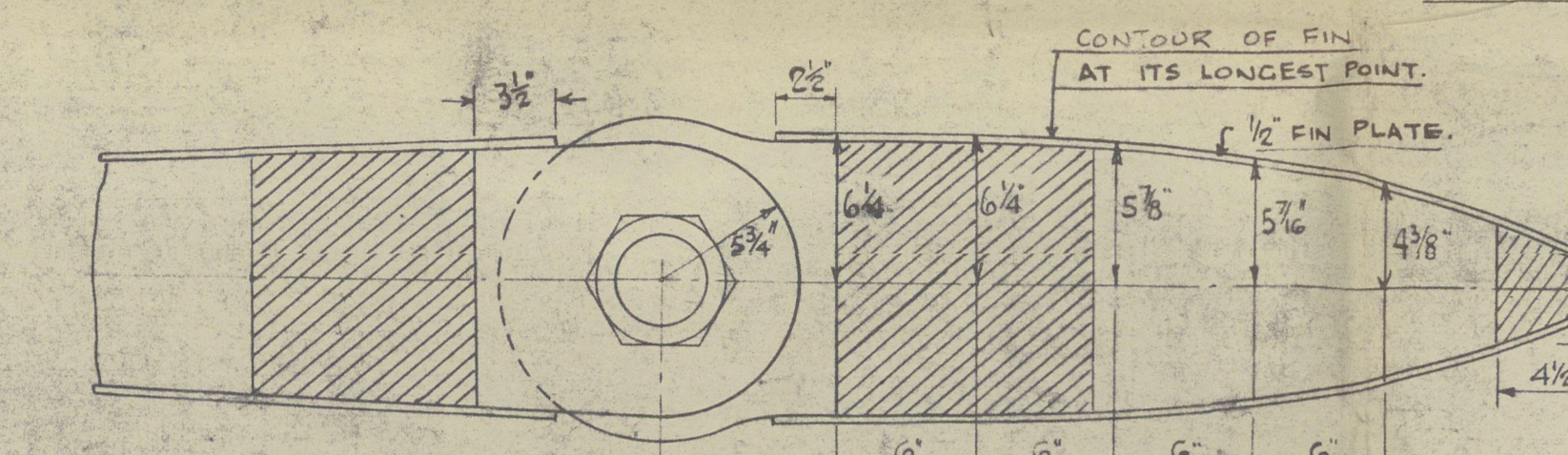
ALL RIVETS TO HAVE COUNTERSUNK HEADS AND TO FINISH FLUSH WITH RESPECTIVE SURFACES WHERE THICKNESS OF RUDDER CASTING EXCEEDS 5" RIVET HOLES 2 3/4" SUITABLE FOR 7/8" DIAM. FITTED RIVETS. WHERE LESS THAN 5" RIVET HOLES TO BE 3/4" FOR 7/8" DIAM. RIVETS.

RUDDER TO BE COATED WITH BITUMINOUS COMPOSITION.



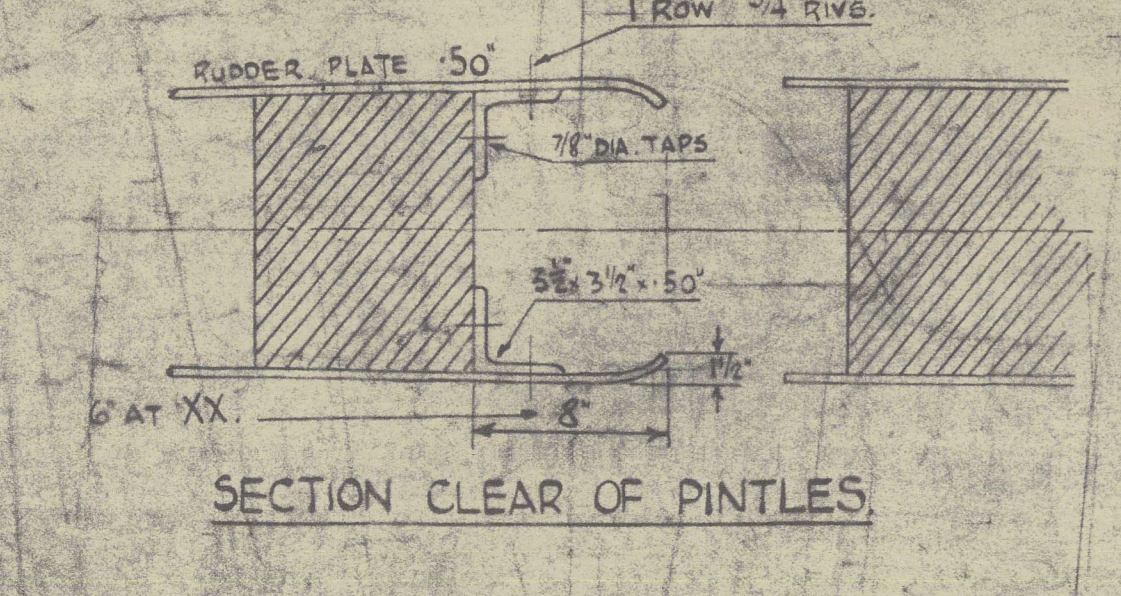
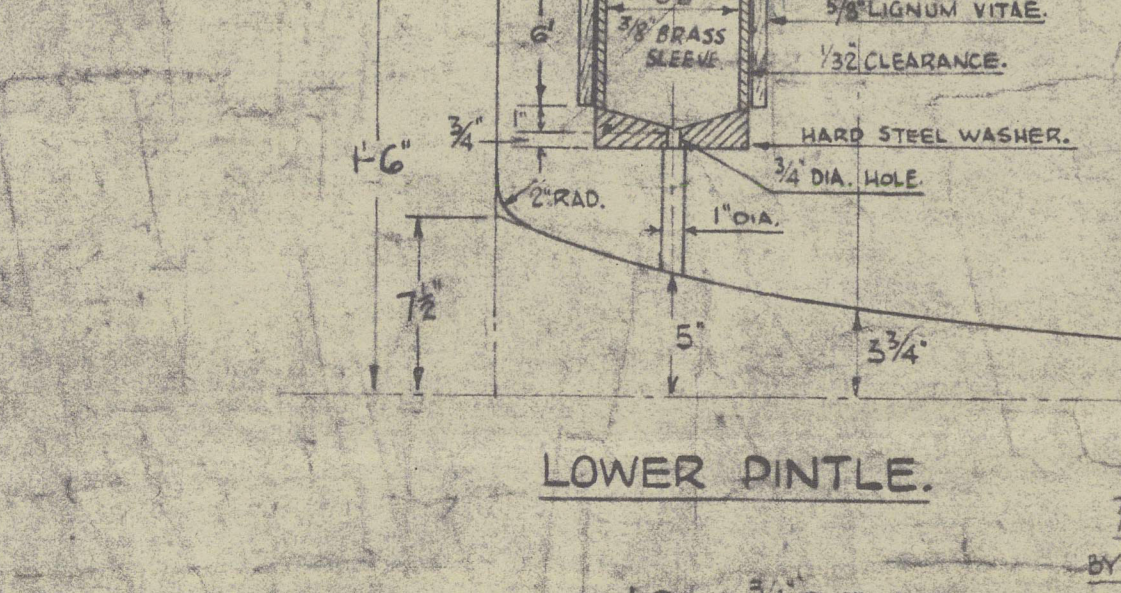
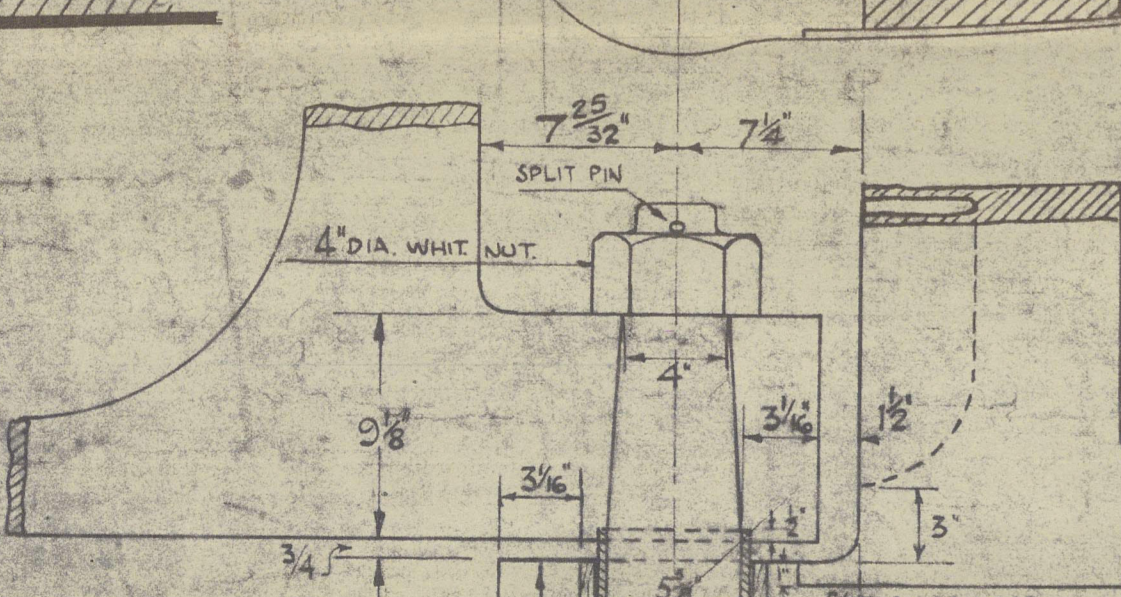
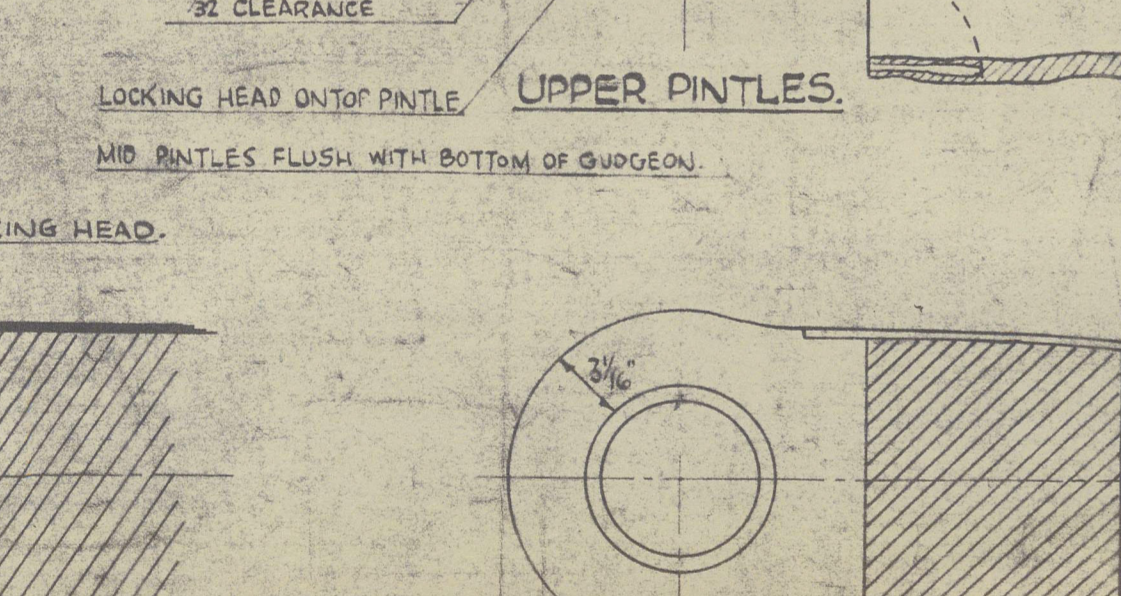
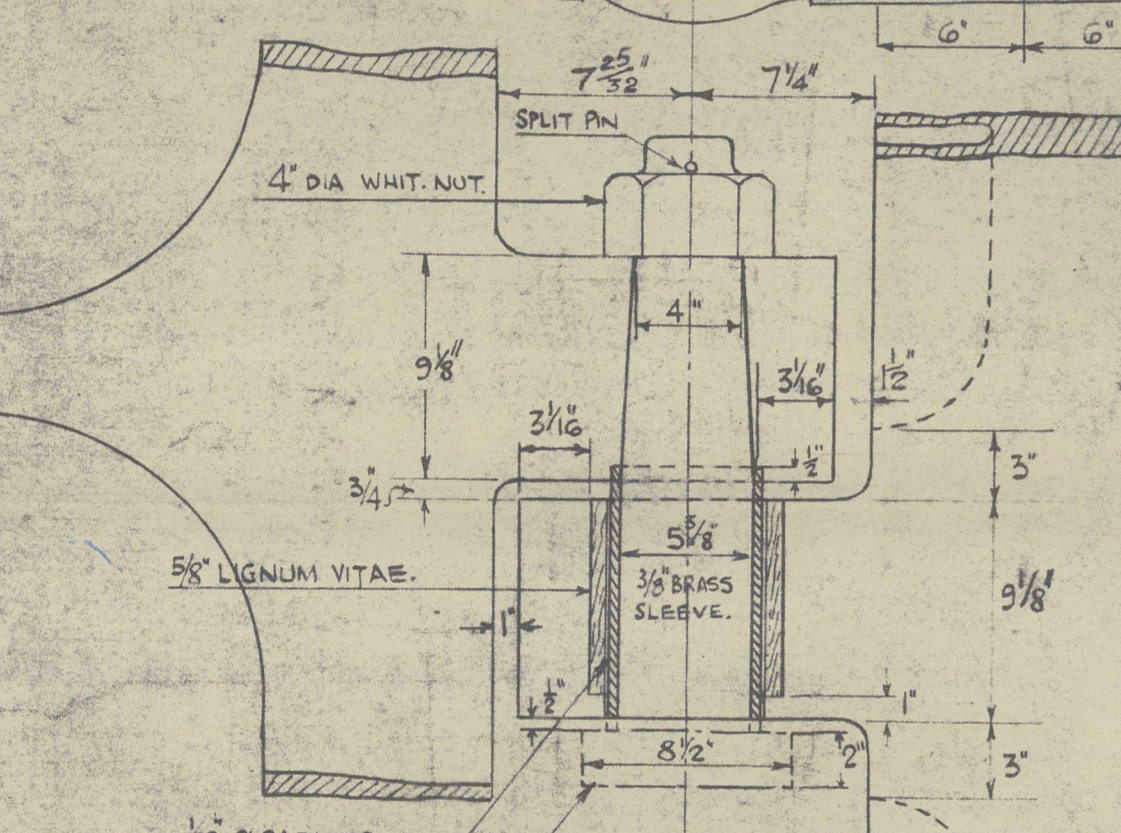
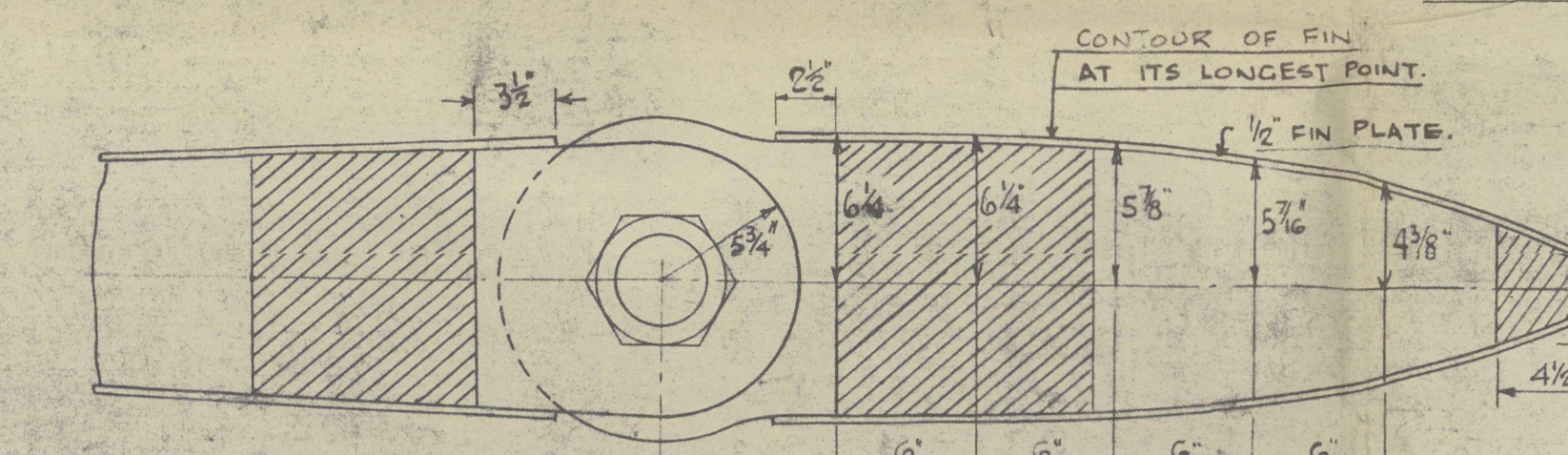
ALL RIVETS TO HAVE COUNTERSUNK HEADS AND TO FINISH FLUSH WITH RESPECTIVE SURFACES WHERE THICKNESS OF RUDDER CASTING EXCEEDS 5" RIVET HOLES 2 3/4" SUITABLE FOR 7/8" DIAM. FITTED RIVETS. WHERE LESS THAN 5" RIVET HOLES TO BE 3/4" FOR 7/8" DIAM. RIVETS.

RUDDER TO BE COATED WITH BITUMINOUS COMPOSITION.



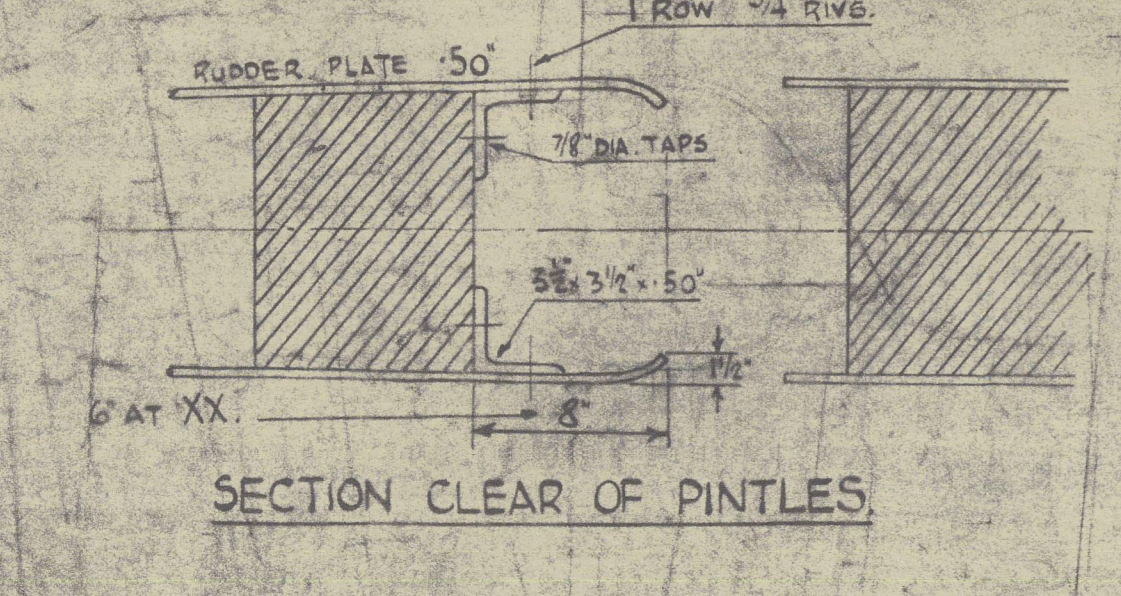
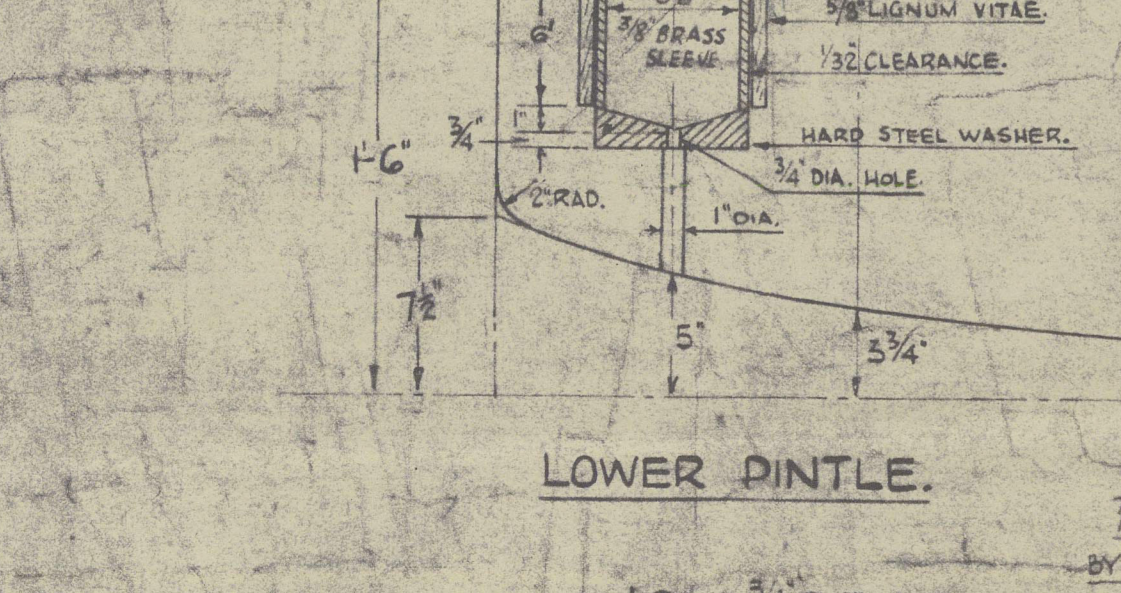
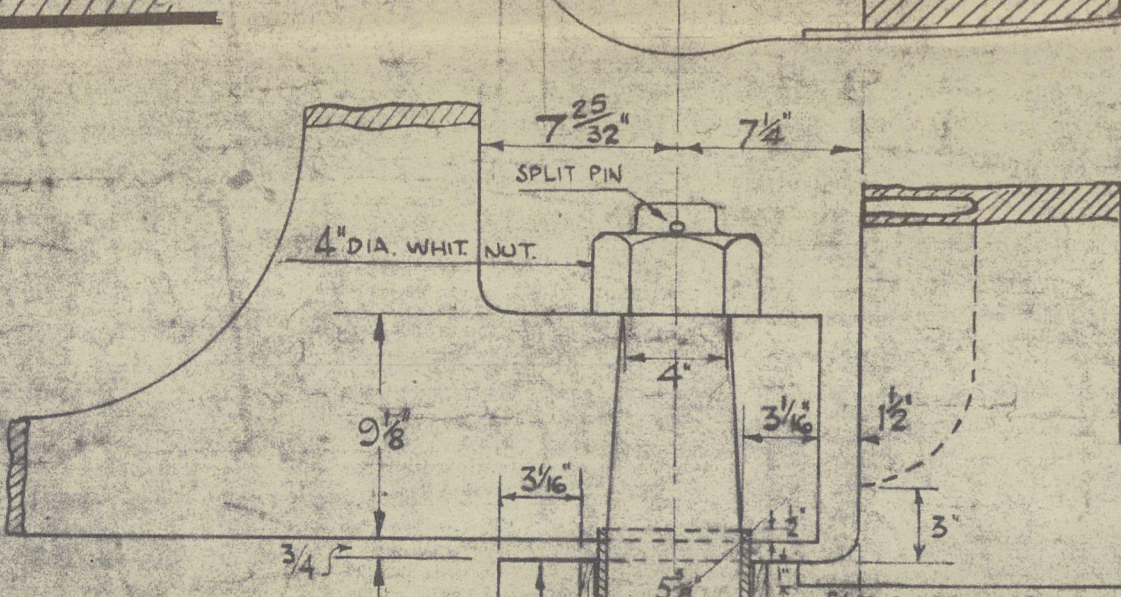
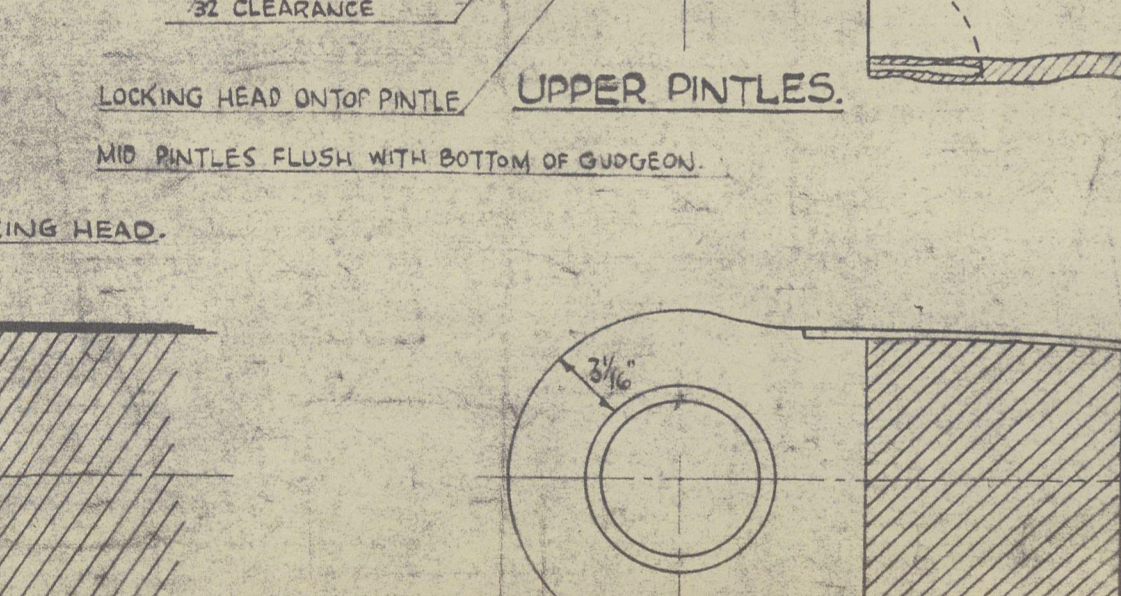
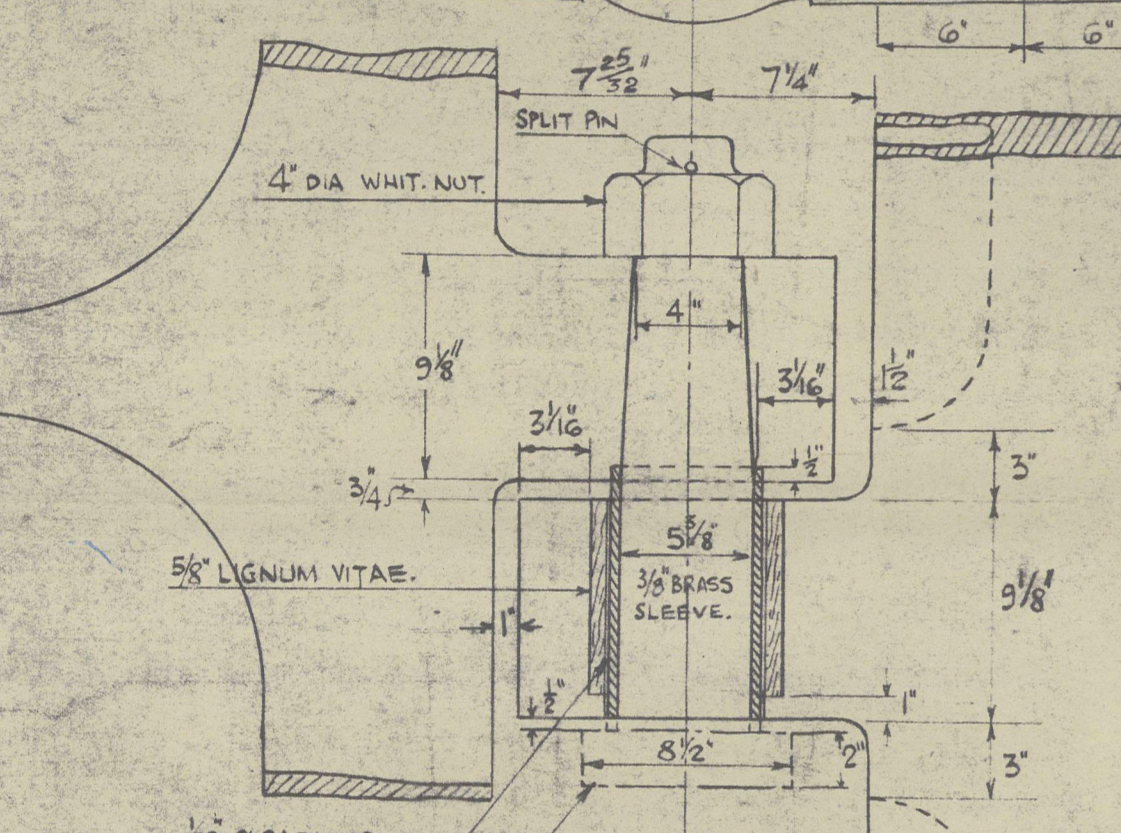
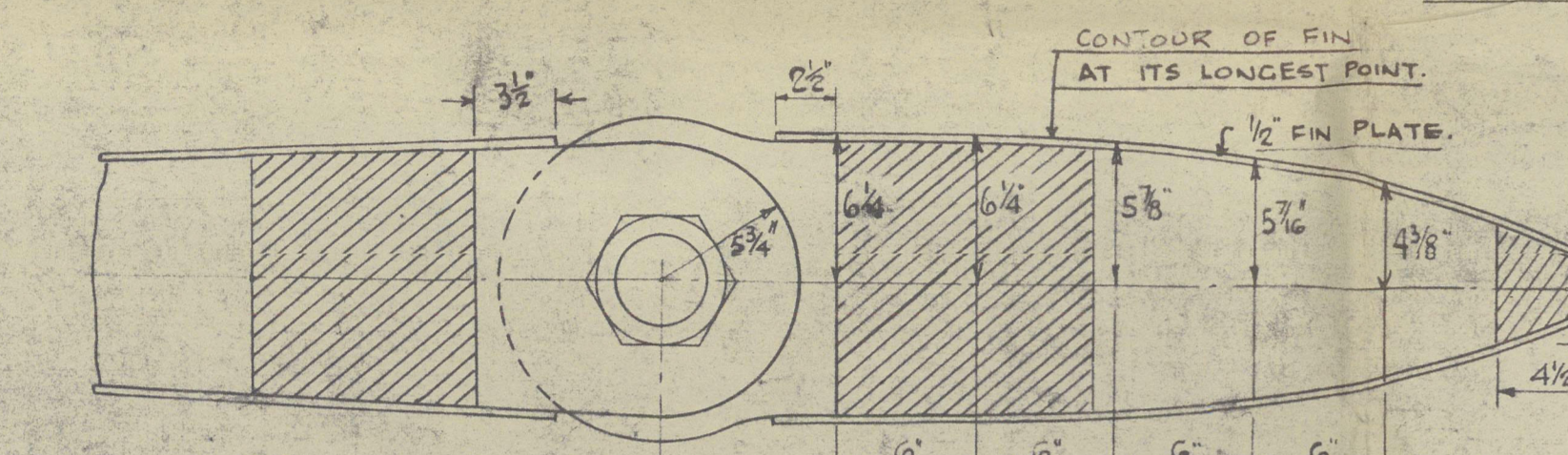
ALL RIVETS TO HAVE COUNTERSUNK HEADS AND TO FINISH FLUSH WITH RESPECTIVE SURFACES WHERE THICKNESS OF RUDDER CASTING EXCEEDS 5" RIVET HOLES 2 3/4" SUITABLE FOR 7/8" DIAM. FITTED RIVETS. WHERE LESS THAN 5" RIVET HOLES TO BE 3/4" FOR 7/8" DIAM. RIVETS.

RUDDER TO BE COATED WITH BITUMINOUS COMPOSITION.



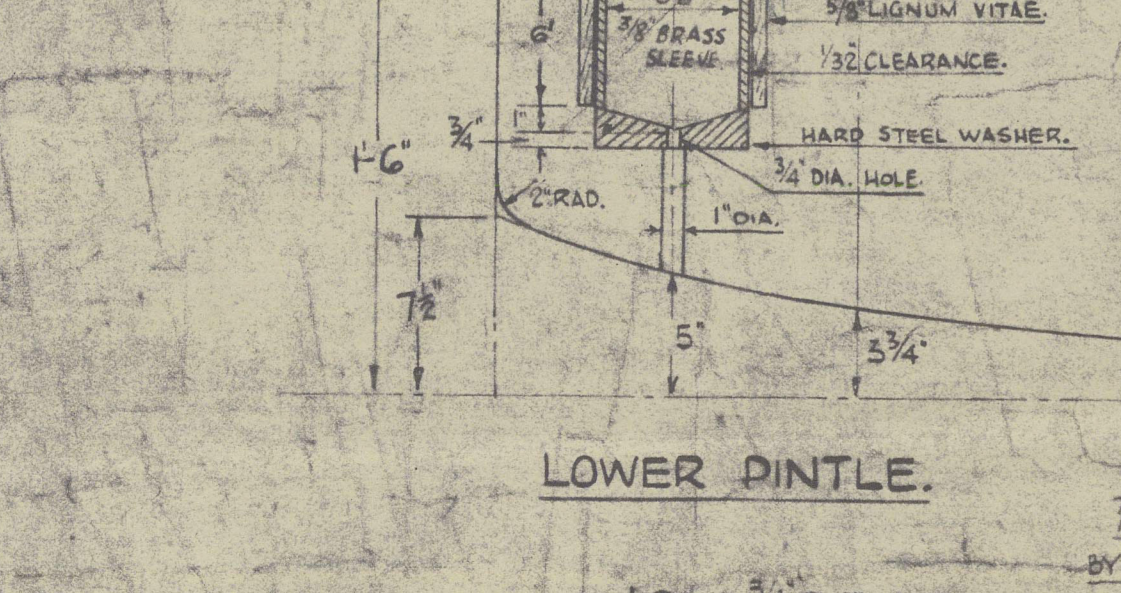
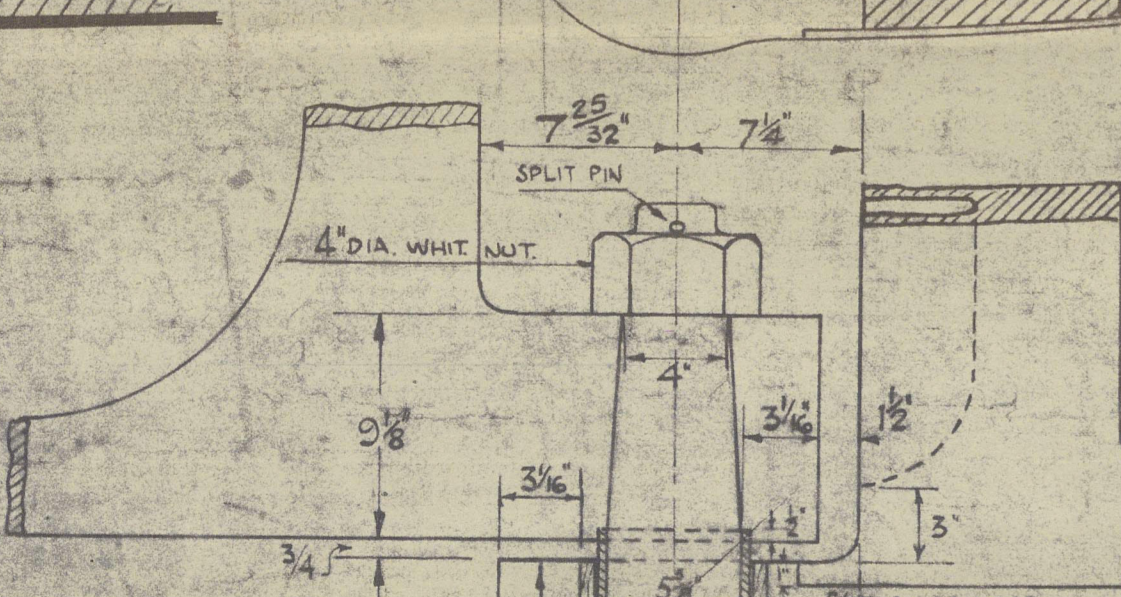
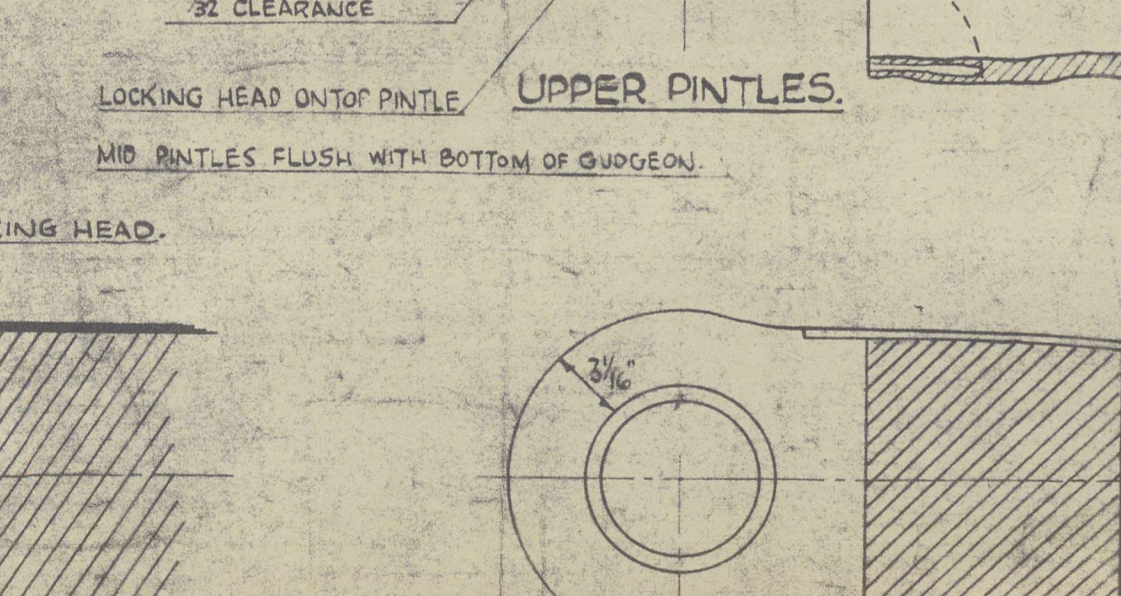
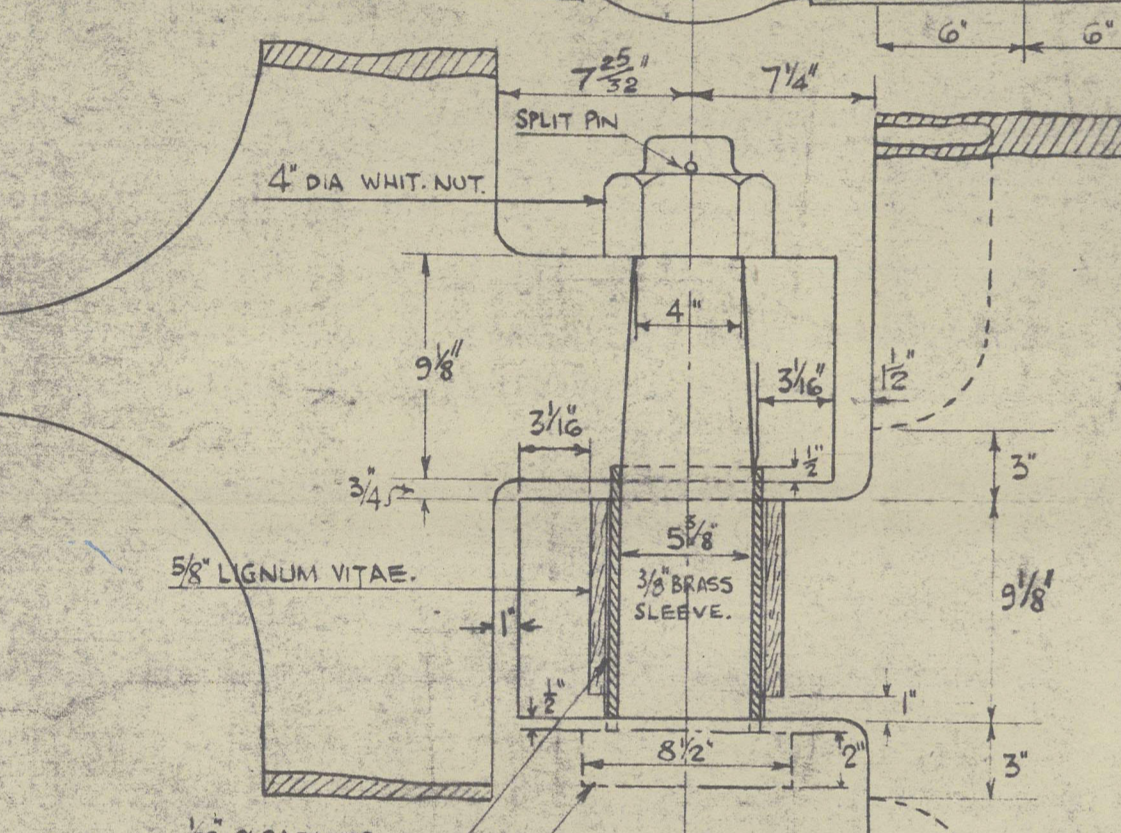
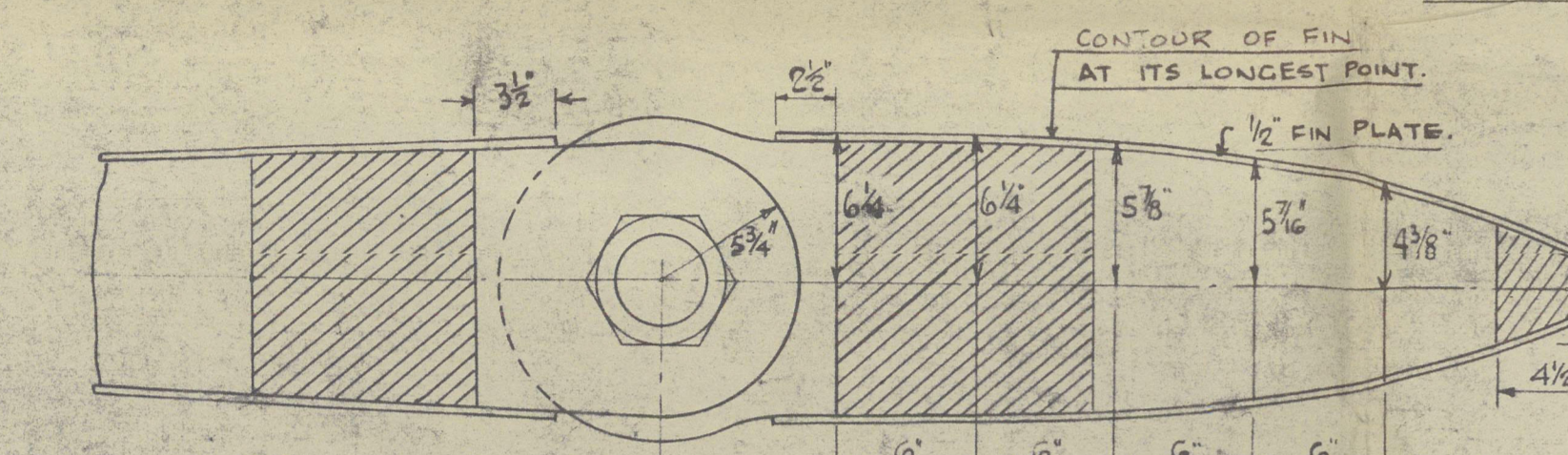
ALL RIVETS TO HAVE COUNTERSUNK HEADS AND TO FINISH FLUSH WITH RESPECTIVE SURFACES WHERE THICKNESS OF RUDDER CASTING EXCEEDS 5" RIVET HOLES 2 3/4" SUITABLE FOR 7/8" DIAM. FITTED RIVETS. WHERE LESS THAN 5" RIVET HOLES TO BE 3/4" FOR 7/8" DIAM. RIVETS.

RUDDER TO BE COATED WITH BITUMINOUS COMPOSITION.



ALL RIVETS TO HAVE COUNTERSUNK HEADS AND TO FINISH FLUSH WITH RESPECTIVE SURFACES WHERE THICKNESS OF RUDDER CASTING EXCEEDS 5" RIVET HOLES 2 3/4" SUITABLE FOR 7/8" DIAM. FITTED RIVETS. WHERE LESS THAN 5" RIVET HOLES TO BE 3/4" FOR 7/8" DIAM. RIVETS.

RUDDER TO BE COATED WITH BITUMINOUS COMPOSITION.



(3)

Barclay Curle & Co L^d

N^o 689 - 690

Rudder & Sternframe.

*Amstelbrug *

690 2nd

GLASGOW REPORT No. 65929

690 "Empire Highway"

GLASGOW REPORT No. 66280.

2nd 689 Empire Bourage 66523

GLASGOW REPORT No.

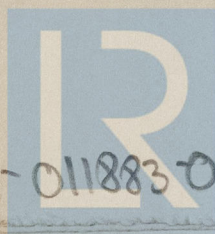
* 689 Empire Bourage (Now PHILIPS WOUWERMAN)

GLASGOW REPORT No.

66732

11 CERAM sister to

Rapier Star



© 2021

011877-011883-0038

Lloyd's Register
Foundation