

## LLOYD'S REGISTER OF SHIPPING

Index No.

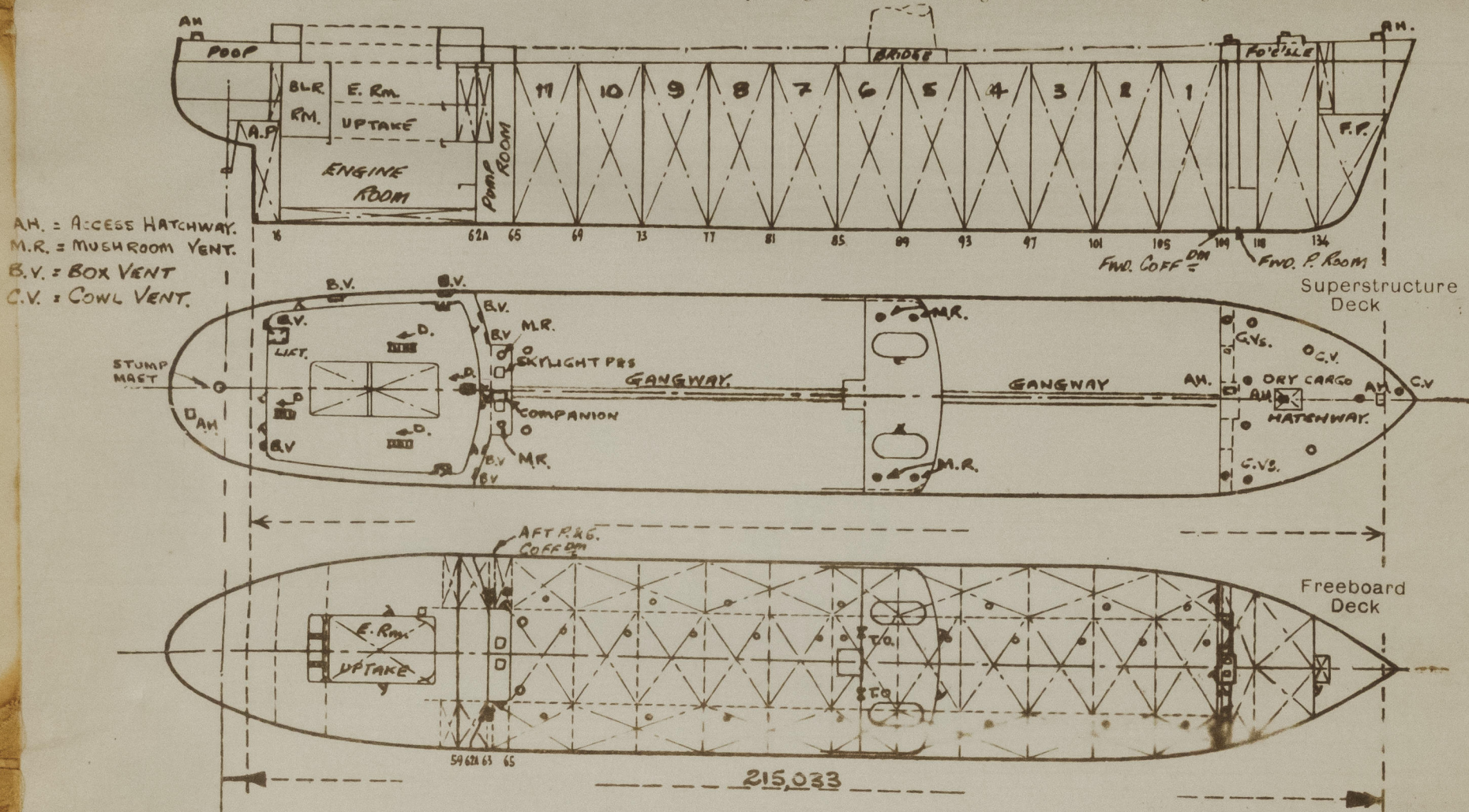
(For London Office only.)

SURVEYS FOR FREEBOARD  
(CONDITIONS OF ASSIGNMENT)Ship's Name FEDOR POLETAEVPort of Survey SESTRI GENOA

Official Number.

Surveyor's Signature LB. Mairi & E. WinterNationality and Port of Registry RUSSIAN. ODESSA.Date of Survey DURING CONSTRUCTION

Disposition and dimensions of superstructures, trunks, deckhouses, machinery casings and wood sheathing to be inserted in the diagrams and tabular statement:—



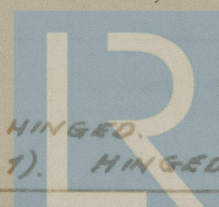
ALL DIMENSIONS IN METRIC UNITS &amp; GIVEN IN MILLIMETRES.

Particulars of Superstructures, Trunks, Casings, Deckhouses.

	Coaming	Plating	Stiffeners	Spacing	End Attachments of Stiffeners	Size of Openings	Height of Sills	Height, Beam to Beam
Poop Bulkhead ...	11.5	11.5	P 300 x 13 TOE WELDED.	850.	WELDED T. & B.	2 @ 1500 x 400	610	2570
Raised Quarter Deck Bulkhead ...								
Bridge, After Bulkhead ...	10.0	10.0	P 180 x 8 TOE WELDED	850	WELDED T. & B.	2 @ 1600 x 1200	460	3000
Bridge, Forward Bulkhead ...	10.5	10.5	P 280 x 13 TOE WELDED	850	WELDED T. & B.	2 @ 1500 x 400	460	3000
Forecastle Bulkhead ...	8.0	8.0	P 130 x 10.5 WELDED	610	WLD. LUG AT TOP.	4 @ 1500 x 400	460	2879
Trunk, Aft ...								
Trunk, Forward ...								
Exposed Machinery Casings on Freeboard or Raised Quarter Decks ...								
Exposed Machinery Casings on Superstructure Decks ...								
Machinery Casings within Superstructures not fitted with Class I Closing Appliances ...								
Deckhouse and Pump Room Entrances	FWD. 8.0 AFT. 11.5	8.0 11.5	1 130 x 10.5 WLD. P 300 x 13 TOE WELDED	610 850	WLD. LUG AT T. WLD. T. & B.	1500 x 400 1 FWD, 2 AFT.	610	2940 2910

Particulars of Closing Appliances (state if capable of being manipulated from both sides).

Poop Bulkhead ...	STEEL W.T. DOORS OPERATED FROM BOTH SIDES (CLASS 1.) HINGED.
Raised Quarter Deck Bulkhead ...	
Bridge, After Bulkhead ...	STEEL PLATES SECURED WITH HOOK BOLTS (CLASS 2.) PORTABLE, BOLTS SP. 300.
Bridge, Forward Bulkhead ...	STEEL W.T. DOORS OPERATED FROM BOTH SIDES (CLASS 1.) HINGED.
Forecastle Bulkhead ...	STEEL DOORS OPERATED FROM BOTH SIDES (CLASS 1.) HINGED.
Exposed Machinery Casings on Freeboard or Raised Quarter Decks ...	
Exposed Machinery Casings on Superstructure Decks ...	
Machinery Casings within Superstructures not fitted with Class I Closing Appliances ...	
Deckhouse and Pump Room Entrances	FWD. STEEL DOOR OPERATED BOTH SIDES. (CLASS 1.) HINGED. AFT. STEEL W.T. DOORS OPERATED BOTH SIDES. (CLASS 1.) HINGED.



© 2021

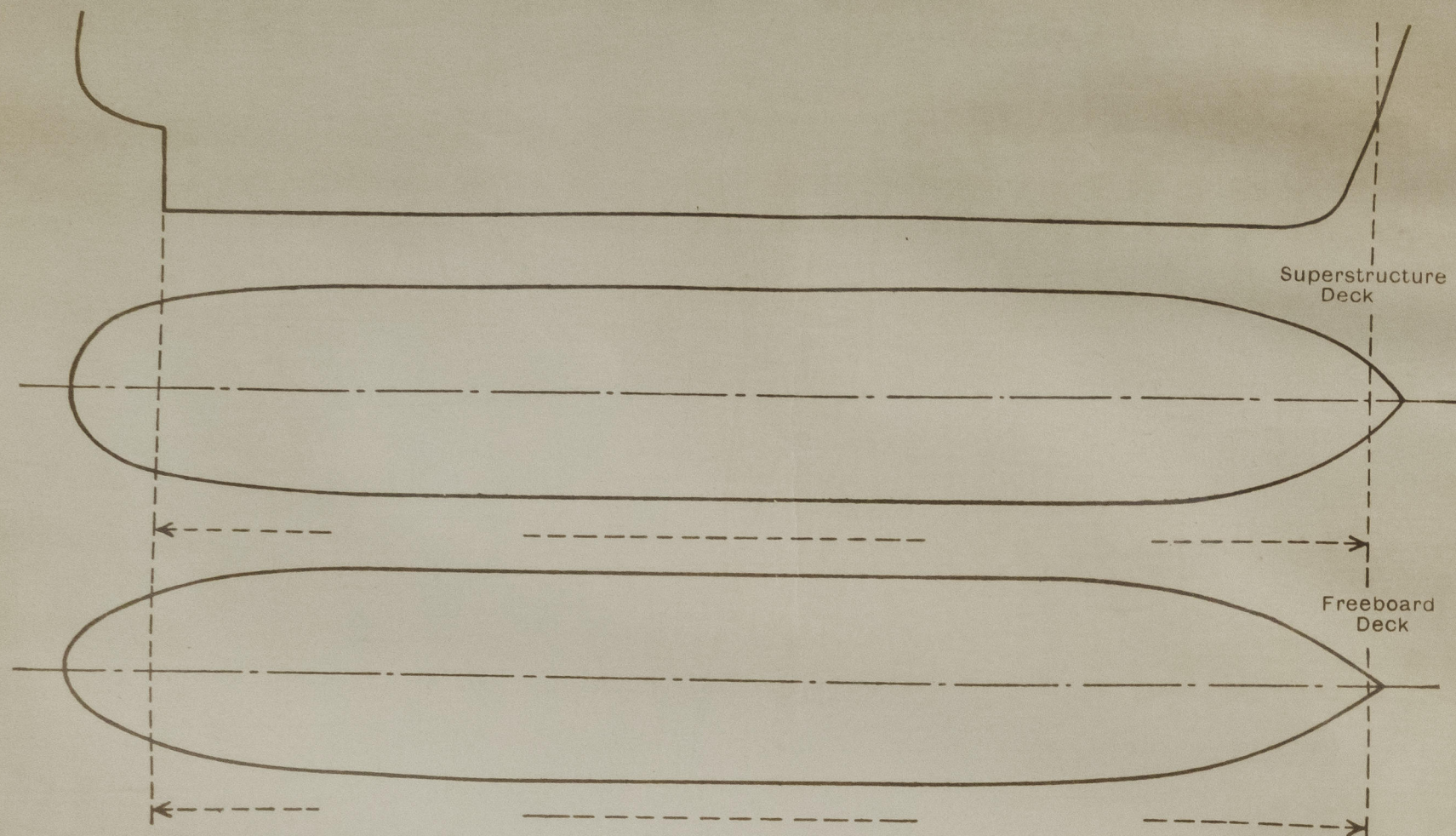
Lloyd's Register  
Foundation

011869-011876-010512



# PARTICULARS OF PROTECTION TO OPENINGS, ETC.

The following diagrams should be used to indicate the positions of cargo and coaling hatchways, gangway, cargo and coaling ports, side scuttles, scuppers, ventilators, companionways, etc., which would affect the seaworthiness of the ship:—



Particulars of fiddle, funnel and ventilator coamings, engine room skylight and other openings in machinery casing tops and their means of closing:—

**NO FIDDLE OPENINGS FITTED.**

**FUNNEL, VENT. COAMINGS & ENGINE ROOM SKYLIGHT STRONGLY CONSTRUCTED OF STEEL.**

**FUNNEL FITTED WITH STEEL DOOR, SKYLIGHT HINGED STEEL FLAPS FITTED WITH 8 IN NO. FIXED STRONG GLASS BULLSEYES & SECURED W.T. WITH TOWELS & PACKING.**  
ON CASING TOP, ACCESS HATCH PORTSIDE, 420 x 420 x 200 CMQ 8 MATHS. FITTED WITH HINGED STEEL W.T. COVER WITH TOWELS AND PACKING.  
VENTILATION AND AIR INTAKES IN CASING SIDE ON BOAT DECK FITTED WITH GRILLS AND HINGED STRONG STEEL COVERS SECURED W.T. BY HINGED TOWELS.

Particulars of Flush Bunker Scuttles:—

NONE.

Particulars of Companionways:—

(including those incorporated in deckhouses and masthouses)

**AFTER PUMP ROOM:—** STRONG STEEL COMPANIONWAY ON P. RM. TOP. STEEL DOOR, 1500 x 650 OPERATED BOTH SIDES. SILL 460. DOOR SECURED W.T. WITH CLIPS & PKG.

**ALL COMPANIONWAYS TO POOP ACCOMMODATION & MACHY. CASINGS ARE IN A STRONG STEEL DECKHOUSE 9 IN NO. STEEL, DOORS, 1500 x 400 OPERATED BOTH SIDES, SILLS 460, AND 1 IN NO. DOUBLE STEEL DOOR TO PROVISION LIFT, SECURED W.T. WITH CLIPS & PKG. OPENING 1800 x 1800 SILL 260. OPERATED FROM BOTH SIDES.**

Particulars of Ventilators in exposed positions on freeboard and superstructure decks:—

**FO'C'SLE DECK:—** 6 IN NO. 460 DIA C.V'S. COAMINGS WLD. 1230 x 10. ADEQUATELY STAYED. 4 IN NO. 310 DIA C.V'S

COAMINGS WLD. 915 x 8.5. ALL C.V'S CLOSED WITH STEEL COVERS SECURED W.T. WITH PKG & TOWELS.

**BRIDGE DECK:—** 2 P&S 500 DIA MUSHROOM V'S. COAMINGS WLD. 460 x 10. CLOSED BY SCREW DOWN STEEL W.T. COVERS WITH PKG.

**POOP DECK:—** DERRICK STUMP MAST FITTED WITH HINGED STEEL FLAP.

VENTS BUILT INTO DECKHOUSE SIDES & BULKHEADS, 760, 300 & 450 x 150. COAMINGS 460 x 10 WLD.

OPENINGS CLOSED WITH HINGED STEEL COVERS SECURED W.T. BY PACKING & TOWELS. 5 PORT, 3 STB.

**PUMP ROOM:—** 1 P&S 760 DIA. MUSHROOM VENTS, WLD. COAMINGS 2000 x 10 SUPPORTED WITH BRACKETS AND CLOSED W.T. WITH SCREW DOWN STEEL COVERS & PACKING.

**FREE<sup>BD</sup> DECK:—** 1 P&S. AFT PUMP ROOM VENTS. 864 DIA WLD COLUMNS, 10 THICK SUPPORTED WITH BKTS.

OPENING 9500 ABOVE DECK. 760 DIA x 10 THICK TRUNKING AT POOP DECK LEVEL FITTED TO PMP RM.

**FORWARD PUMP:—** 2 - 600 DIA COWL VENTS. COAMINGS WLD 915 x 10. CLOSED WITH STEEL COVER SECURED

ROOM TOP. W.T. WITH PKG. & TOWELS.

Particulars of Air Pipes in exposed positions on freeboard, raised quarter, or superstructure decks:

**FO'C'SLE DK:—** 1 P&S, 1 CR.— 250 DIA. 1 P.— 150 DIA. 3-50 DIA. AT LEAST 460 ABOVE DK TO OPENING.

**FBD. DK:—** 1 P&S, 250 DIA. 1 P&S—200 DIA. 2 P&S, 1 CR.— 150 DIA. AT LEAST 460 ABOVE DK. TO OPENING.

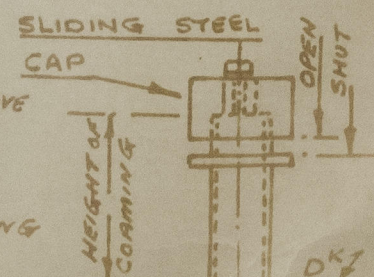
**POOP DK:—** 1 P—150 DIA. 1 P&S—125 DIA. 2 P, 15.—100 DIA. 5 P, 25.—80 DIA.

4-75 DIA P&S. 1 P—65 DIA. 5 P, 35.—50 DIA. AT LEAST 460 ABOVE DK TO OPENING

**BOAT DK:—** 1 S.—250 DIA. 460 ABOVE DK. TO OPENING.

CARGO TANKS HAVE COMMON VAPOUR LINE WITH AIR PIPES LED UP FOR<sup>WD</sup> MAST AND P&S. AMIDSHIP DERRICK MASTS.

ALL AIR PIPES FITTED WITH STEEL CAPS (AS SKETCH) AND THOSE FROM OIL TANKS OR COFF<sup>DRS</sup> FITTED WITH GAUZE.



Particulars of Gangway Cargo and Coaling Ports:—

NONE.

*Tedor Poltaev*

Particulars of Scuppers and Sanitary Discharge Pipes:—

**EXPOSED FBD. DK. SCUPPERS:—** 12 P&S 100 DIA x 16 THICK ELBON PIECES DIRECT OVERBOARD DISCHARGE.

**FO'C'SLE DK. SCUPPERS:—** 2 P&S. 80 DIA DIRECT DISCHARGE ONTO EXPOSED FBD. DECK.

**BRIDGE DK SCUPPERS:—** 2 P&S 80 DIA DIRECT DISCHARGE ONTO EXPOSED FBD. DECK.

**EXPOSED POOP DK SCUPPERS:—** 5 P&S, 1 80 DIA DIRECT OVERBOARD DISCHARGE.

**SANITARY DISCHARGES FROM ACCOMMODATION WITHIN POOP ABAFT FRM N° 14 HAVE OVERBOARD DISCHARGE AT FRM. N° 10/11 P&S FITTED WITH BRASS S.D.A.N.R. VALVE OPERATED ABOVE FBD. DECK & FITTED WITH OPEN/SHUT INDICATOR.**

ALL SOIL PIPES FROM AFTER ACCOMMODATION HAVE COMMON DISCHARGE IN E. RM. 100 DIA BRASS S.D.A.N.R. VALVE P&S. ALL SANITARY DISCHARGES FROM AFT. ACCOMMODATION EXCEPT ABAFT FRM N° 14 HAVE COMMON DISCHARGE IN E. RM. 100 DIA S.D.A.N.R. VALVE (BRASS) P&S. HOSPITAL ON BOAT DK HAS SEPARATE DISCHARGE 100 DIA BRASS S.D.A.N.R. VALVE IN E. RM. PORT. SOIL & SANITARY DISCHARGES FROM AMIDSHIP ACCOMMODATION, 65 DIA & 100 DIA BRASS N.R. VALVES FITTED ABOVE FBD. DK. WITH 19 THICK O/B DISCHARGE PIPES IN N° 4 P&S BALLAST TANKS.

THERE ARE NO DISCHARGES FROM SPACES BELOW THE FREEBOARD DECK FOR SOIL OR SANITARY SERVICES.

Particulars of Side Scuttles and Deadlights:—

**NO SIDE SCUTTLES FITTED BELOW FREEBOARD DECK.**

**POOP 'TWEEN DECKS:—** 12 P&S 400 DIA OPENING TYPE.

6 P, 75. 300 DIA " "

**BRIDGE 'TWEEN DECKS:—** 3 P&S 400 DIA " "

1 P&S 400 DIA IN FOR<sup>WD</sup> BULK<sup>HD</sup> OPENING TYPE.

**FOR<sup>WD</sup> PUMP ROOM:—** 1 PORT 400 DIA IN AFT BULK<sup>HD</sup> " "

ALL SIDE SCUTTLES STRONGLY CONSTRUCTED OF BRASS WITH HINGED CAST STEEL

DEADLIGHTS FITTED.

Vertical distance of Sill of lowest Side Scuttle above top of keel

Distance from amidships to centre of lowest Side Scuttle

Particulars of Guard Rails and Bulwarks:—

**FREEBOARD, FO'C'SLE & BRIDGE DECKS INCLUDING F&A GANGWAYS:—**

STANCHIONS 1100 HIGH SPD. 1400 FITTED WITH 3 RAILS. STAYS FITTED APPROX EVERY 4<sup>TH</sup> STANCHION.

**POOP DECK:—**

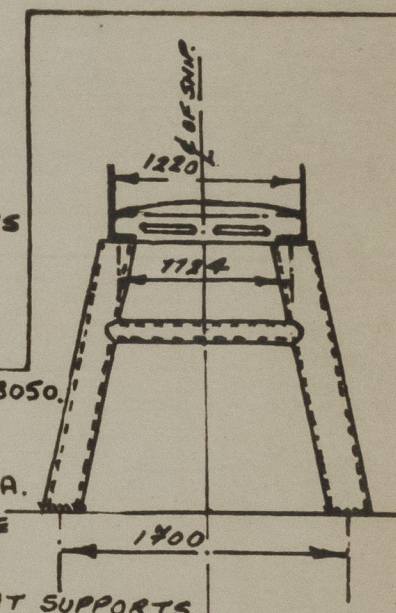
FOR<sup>WD</sup> OF FRM N° 10. BULKHEADS. PLATING 6. RAIL 160 x 7 STAYS 160 x 7 SANGED 1520

ABAFT OF FRM N° 10. GUARD RAILS AS DETAILED ABOVE.

Particulars of Gangways, Lifelines, etc.:—

**FORE & AFT GANGWAY FITTED AT LEVEL OF SUPERSTRUCTURES BETWEEN POOP & BRIDGE AND BRIDGE & FO'C'SLE, AND OF ALL WELDED CONSTRUCTION.**

**SUPPORTS:—** TUBES 219 DIA x 7.1 THICK SPD. 3050. TRANSVR. TUBE 108 DIA x 7.1 THICK. LONG<sup>TD</sup> PLATE: 420 x 10 FLANGES 130. SINGLE DIAGONAL TUBE BRACING F&A. FITTED EVERY 3<sup>RD</sup> & 4<sup>TH</sup> SUPPORT SPACE P&S. 76 DIA x 6 THICK. PLATFORM: PLATE 5 THICK. BEARERS AT SUPPORTS I 220 x 80 x 9 ELSEWHERE T 80 x 80 x 9 SPD 1000.



Particulars of Freeing Arrangements.

Length of Bulwark	Height of Bulwark	Size of Freeing Ports	Number each side	Area each side	Rule area each side
After Well ...	} OPEN RAILS.				
Forward Well ...					
State position of each freeing port ...		{ After Well :— Forward Well :—			
(E. and A. position and height above deck edge)					
State whether the freeing ports are fitted with shutters, bars, or rails, and give particulars of such :—					
Additional area where sheer is less than standard.					



# PARTICULARS OF PROTECTION TO OPENINGS, ETC.

		FBD. DECK.						FO'C'SLE DECK			POOP DECK
		HATCHWAYS ON FREEBOARD AND SUPERSTRUCTURE DECKS.									
Description of Hatchway		(22 IN NO.) CARGO TANKS	(1 P&S) COFFOMS AFT	(1 P&S) COFFOMS FWD	(1 P&S) DEEP TKS. AFT	(1 P.) DEEP TKS. AFT	(1 P&S) DEEP TKS. FWD	F. PK. STORE.	DRY CARGO.	PMP RM. TOP.	ROPE STOR.
Dimensions of Hatchway		1220 DIA	835 DIA	650 DIA	835 DIA	650 DIA	615 DIA	800 x 900	4000 x 4297	900 x 900	580 x 580
COAMINGS	Height above Deck	760	260	260	260	260	230	610	610	660	580
	Thickness	12	12	12.5	12	12.5	12	10	11	10	10
	Sides										
	Ends										
HATCH BEAMS	Stiffeners										
	Brackets, Stays										
	Number										
	Spacing										
FORE AND AFTERS	Scantling and Sketch										
	Bearing Surface										
	Number										
	Spacing										
HATCH COVERS	Unsuported Lengths										
	Scantling* and Sketch										
	Bearing Surface										
	Material	STEEL.	STEEL.	STEEL.	STEEL.	STEEL.	STEEL.	STEEL.	STEEL.	STEEL.	STEEL.
	Thickness	12	17	12.5	17	12.5	17	8	8	8	8
	How fitted	HINGED	BOLTED	HINGED	BOLTED	HINGED	BOLTED	HINGED	HINGED	HINGED	HINGED
	Bearing Surface	O.T. WITH NEOPRENE PKG.	W.T.	W.T. WITH RUB. PKG.	O.T.	W.T. WITH RUB. PKG.	W.T.	W.T. WITH PKG.	W.T. WITH PKG.	W.T. WITH PKG.	W.T. WITH PKG.
Spacing of Cleats		8-23 DIA		5-23 DIA		5-23 DIA		8-15 DIA	26-24 DIA	8-15 DIA	2-15 DIA
Number of Tarpaulins		TOGGLES		TOGGLES		TOGGLES		TOGGLES	TOGGLES	TOGGLES	TOGGLES
		SPQ 480.						SPD 460	SPD 680	SPD 460	

\*Are wood fore and afters steel shod at all bearing surfaces?  
 Are battens and wedges efficient and in good condition?  
 Are tarpaulins in good condition and in accordance with rule requirements?  
 Are lashings provided in accordance with rule requirements?  
 Are wood covers fitted with galvanised end bands?

Particulars of any special features:— (Timber Deck-cargo Fittings, Skylights, Sewage Systems, Ash Ejectors, Rubbish Shoots, etc.)

TANK NO 5 CR & 4 WING P&S. ARE PERMANENT BALLAST TANKS. HATCHWAY COAMINGS ARE AS ARE CARGO TANKS BUT 12 THICK TOP PLATE IS RIVETED W.T. & FITTED WITH AN ACCESS MANHOLE 620 X 470 CLOSED W.T. WITH A HINGED 8 THICK COVER SECURED WITH 4 IN NO 20 DIA TOGGLES & PKG.

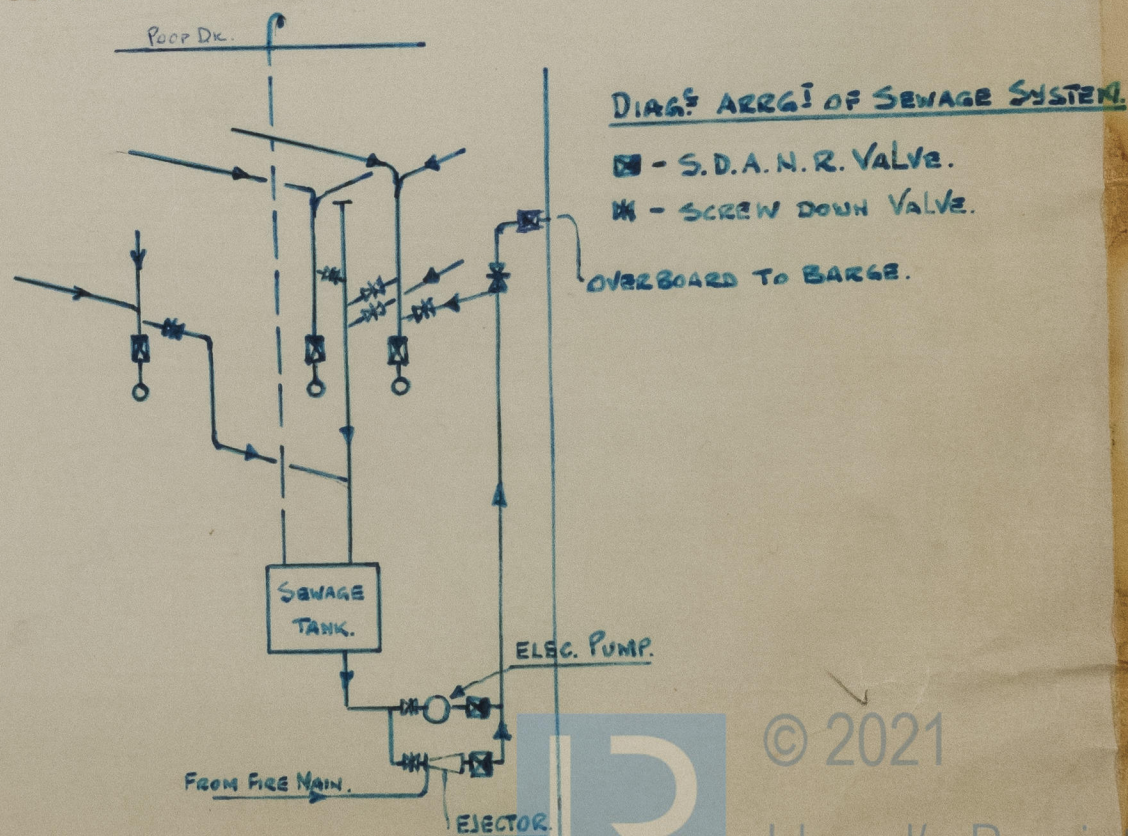
BUTTERWORTH OPENINGS:— 318 DIA FITTED ON FBD. DECK. 84 ON EXPOSED DECK, 6 WITHIN FO'C'SLE, 2 IN AFT. PUMP RM, 4 WITHIN BRIDGE, FITTED WITH. O.T. STEEL COVERS SECURED BY 4-15 DIA TOGGLES & PACKING, ADEQUATED DECK COMPENSATION FITTED. COAMINGS 280 x 14mm

SEARCHLIGHT OPENING:— IN STEM PLATING INSIDE FO'C'SLE. HINGED STEEL COVER ADEQUATELY STIFFENED, 1100 DIA, SECURED W.T. WITH RUBBER PACKING & 6 TOGGLES.

RUBBISH SHOOT:— FITTED P.S. FROM GALLEY IN POOP DECKHOUSE. 16 THICK M.S. TUBE FITTED WITH HINGED STEEL W.T. COVER SECURED BY TOGGLES. WEIGHTED STEEL FLAP FITTED.

AFTER PUMP ROOM SKYLIGHTS:— 2 IN NO FITTED ON PUMP ROOM CASING TOP. STRONGLY CONSTRUCTED OF STEEL WITH HINGED STEEL W.T. FLAPS SECURED WITH TOGGLES AND FITTED WITH STRONG FIXED GLASS BULLSEYES. COAMINGS 460 HIGH.

SEWAGE SYSTEM:— SOIL & SANITARY SERVICES FOR AFTER ACCOMMODATION ARE PROVIDED WITH A SEPTIC TANK AND DISCHARGE SYSTEM WITH HOSE CONNECTION ABOVE EXPOSED FBD. DK. FOR DISPOSAL OF SEWAGE IN PORT.



DIAG. ARRANG. OF SEWAGE SYSTEM.

© 2021

Lloyd's Register Foundation