

# RUDDER & STERNFRAME.

S. TUG N<sup>o</sup> 404.

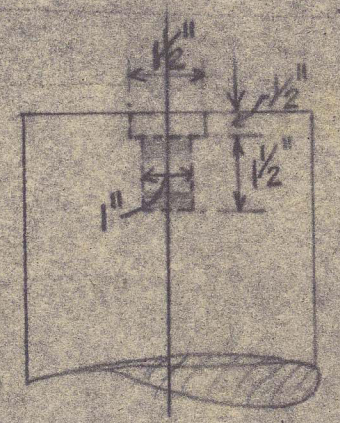
SCALE:- 1" = 1 FOOT EXCEPT WHERE OTHERWISE MARKED.  
TO LLOYDS CLASS \* 100 A.I. FOR TOWING SERVICES.

SERVICE SPEED = 10 1/2 KNOTS.

TOTAL AREA OF RUDDER = 44.1 sq. FT.

A & D TO RULE = 97.82.

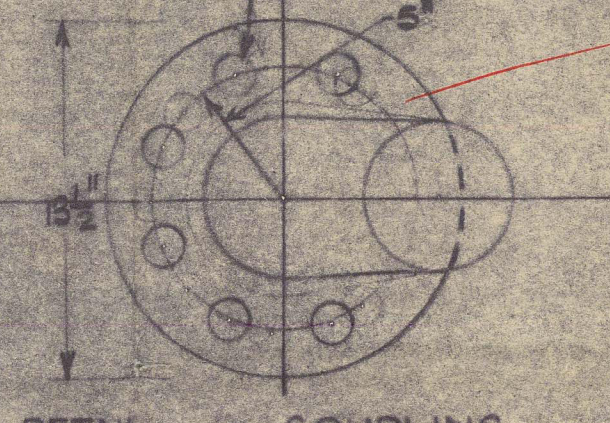
MATERIAL:- STERNFRAME, RUDDER FRAME & STOCK  
TO BE OF FORGED SCRAP STEEL.



DETAILS OF TAPPED HOLE FOR EYE BOLT ON RUDDER HEAD

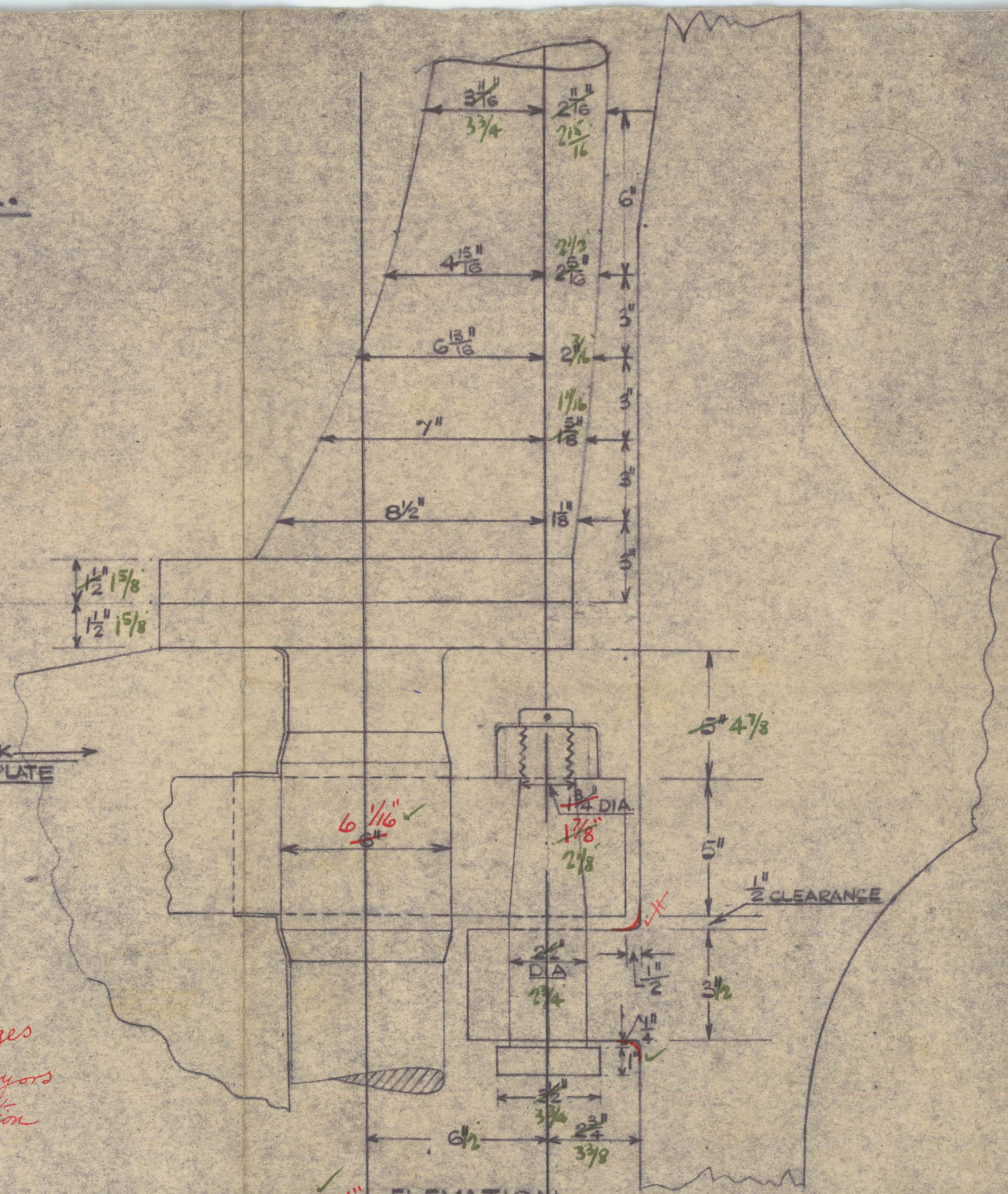
DIA OF STEERING CHAINS 1 1/2" RODS 1 1/2"

6-1/2" FITTED BOLTS.

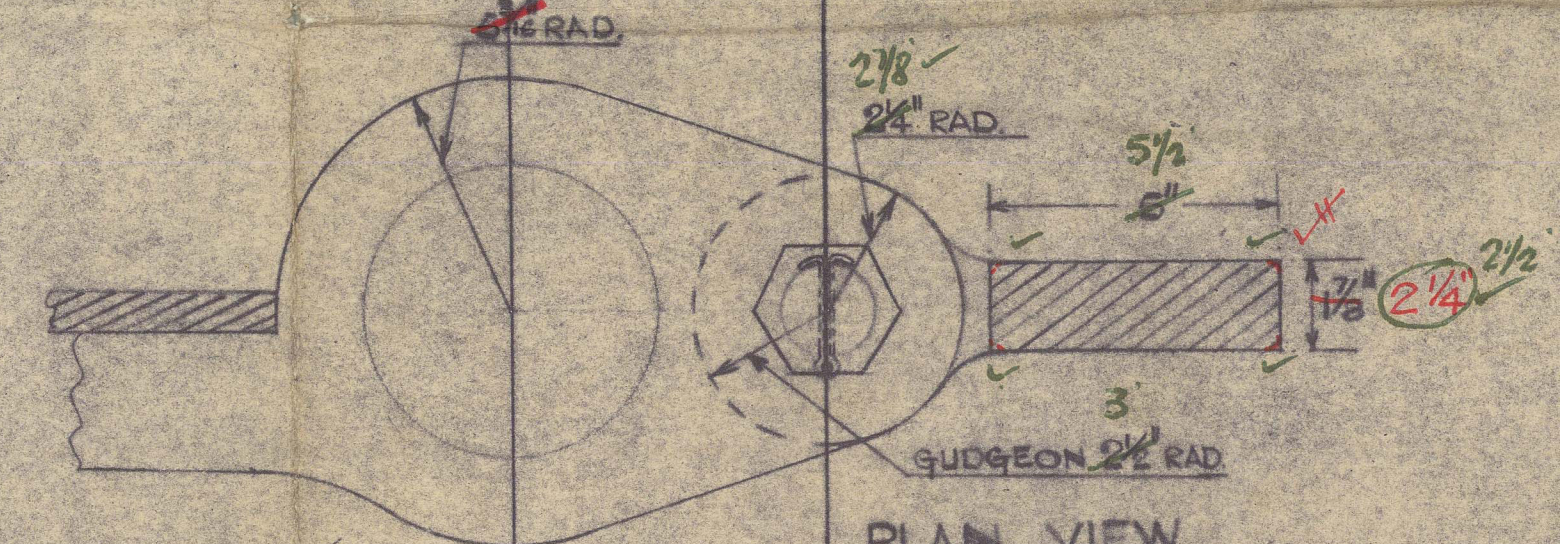


DETAIL OF COUPLING. SCALE: 1/2" = 1 FOOT

*lapping flanges closed to Surveyors satisfaction*



ELEVATION.



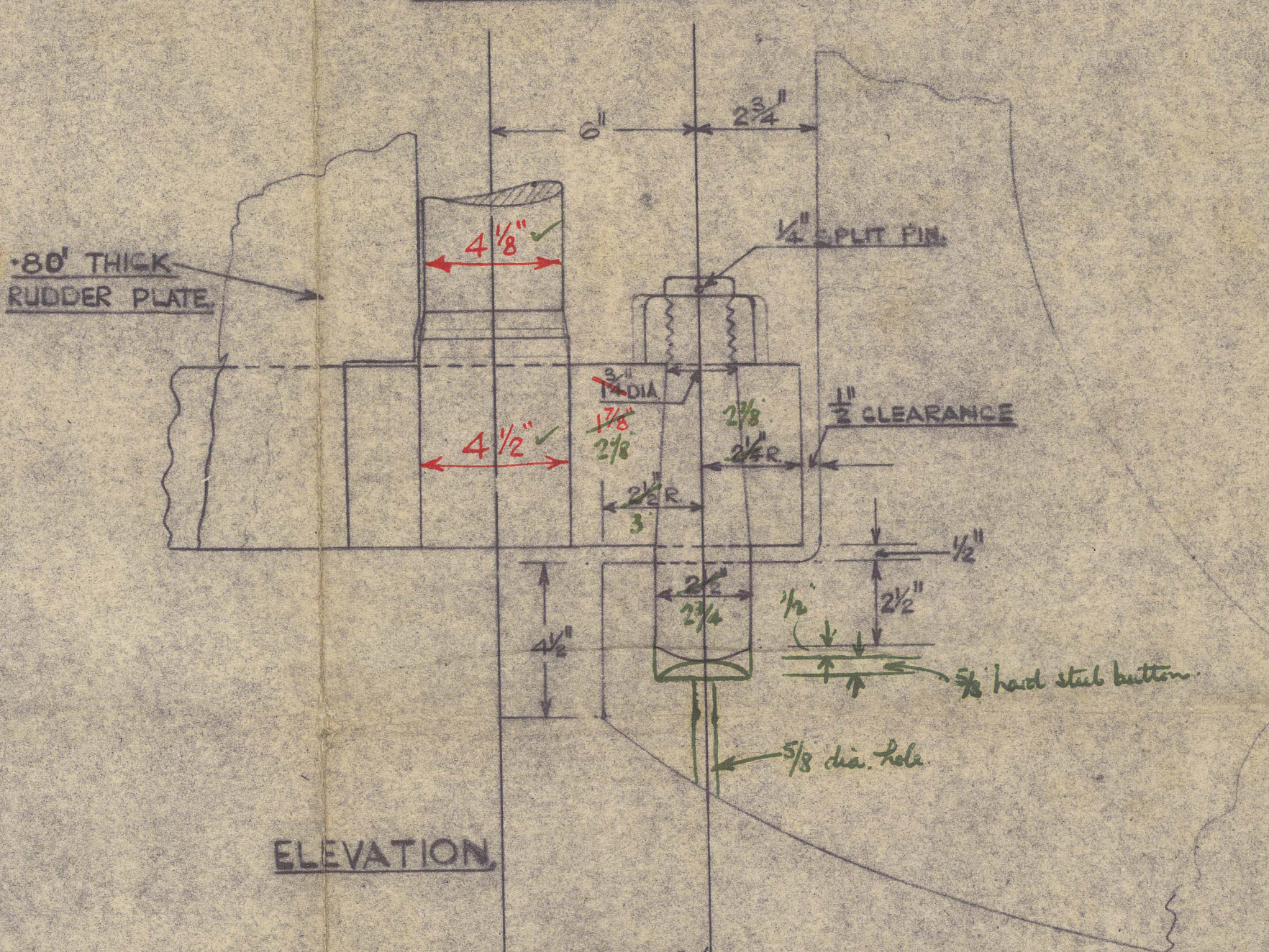
PLAN VIEW.

DETAIL OF TOP PINTLE.

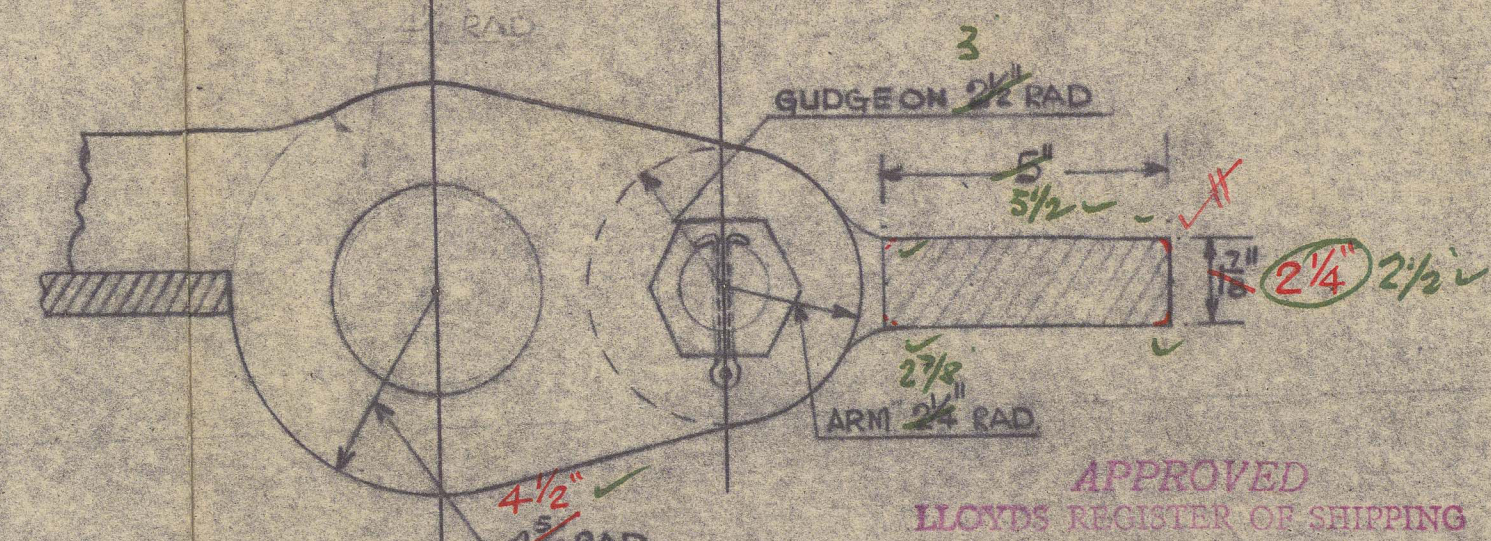
SCALE: 3" = ONE FOOT

DETAIL OF BOTTOM PINTLE.

SCALE: 3" = ONE FOOT.

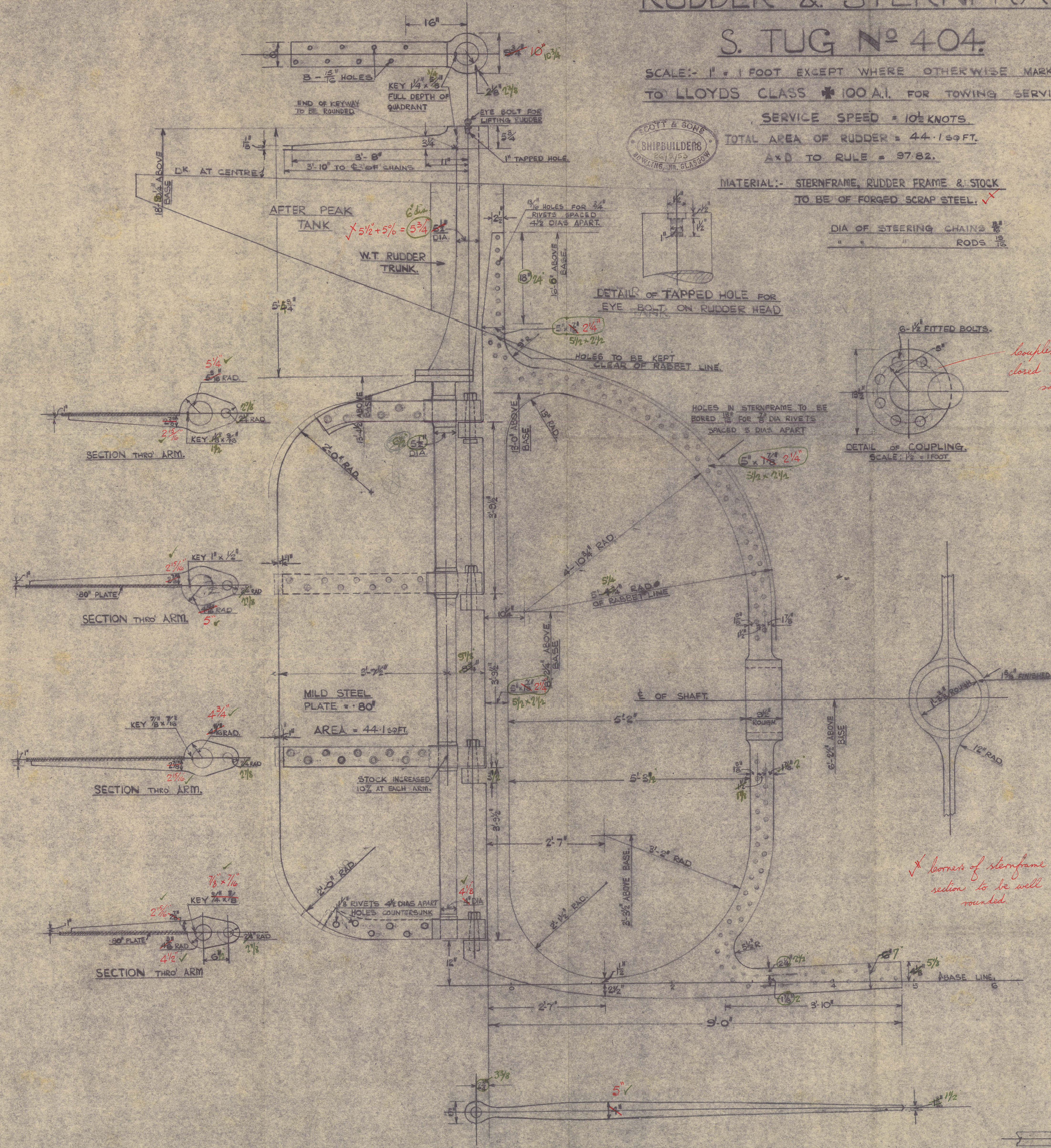


ELEVATION.



PLAN VIEW.

APPROVED  
LLOYD'S REGISTER OF SHIPPING  
THE BRITISH CORPORATION REGISTER  
15/6/03



DETAIL OF END PREPARATION.

*corners of sternframe section to be well rounded*



"SHERIFA"

SCOTT & SONS

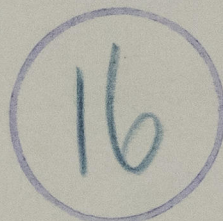
No 404

RUDDER & STERNFRAME.

GLASGOW REPORT No.

83922

RECORDS DEPT.,  
LONDON.



© 2021

Lloyd's Register  
Foundation

011860-011868-0088