

# Lloyd's Register of Shipping.

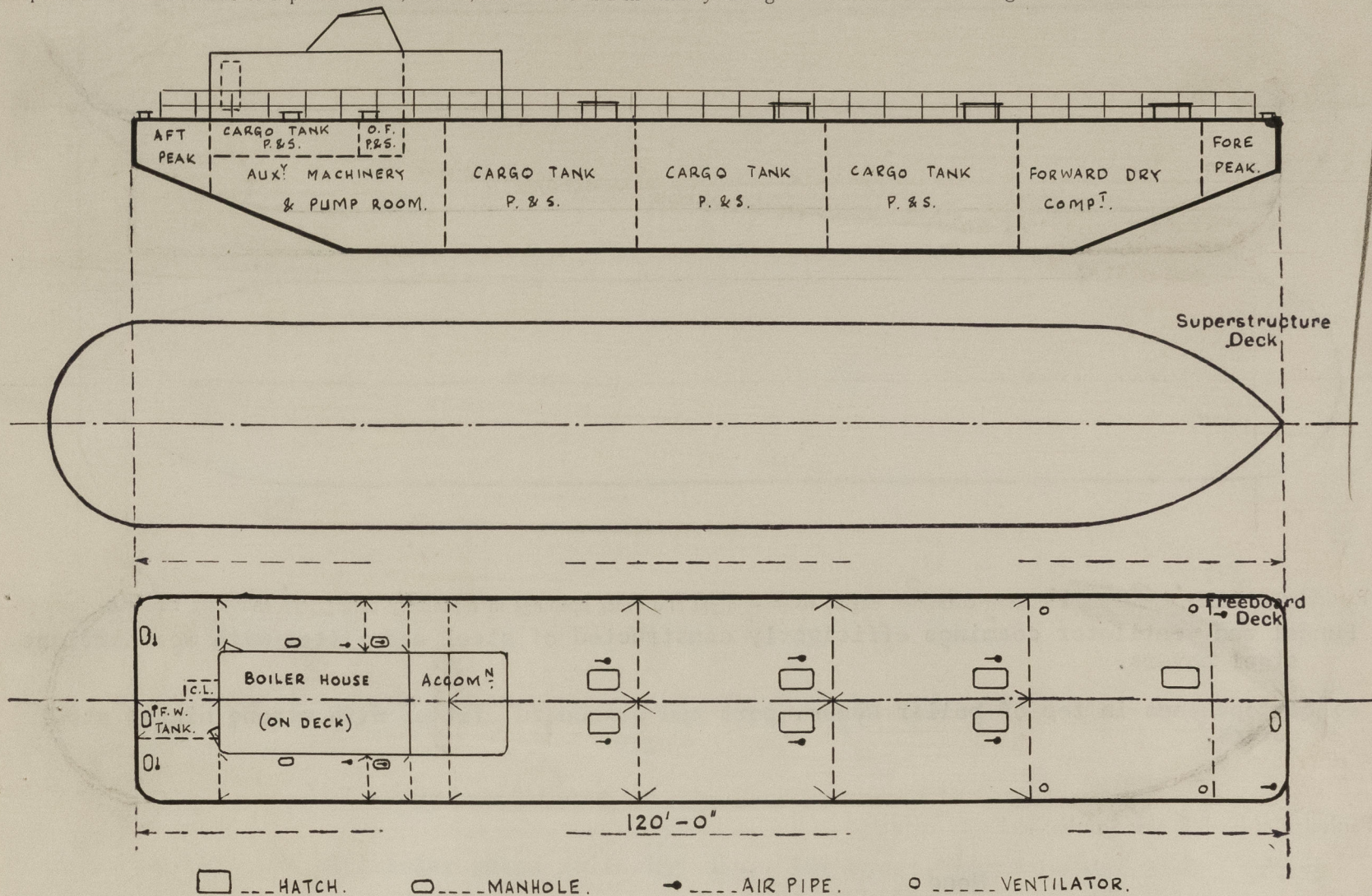
## SURVEYS FOR FREEBOARD.

(CONDITIONS OF ASSIGNMENT.)

23. JAN. 1961

Ship's Name **"B.P. SYDNEY"** Port of Survey **SYDNEY, N.S.W.**  
Official Number **-** Surveyor's Signature *J.B. East*  
Nationality and Port of Registry **Not registered but stationed at Sydney.** Date of Survey **During construction**

Disposition and dimensions of superstructures, trunks, deckhouses and machinery casings to be inserted in the diagrams and tabular statement:—



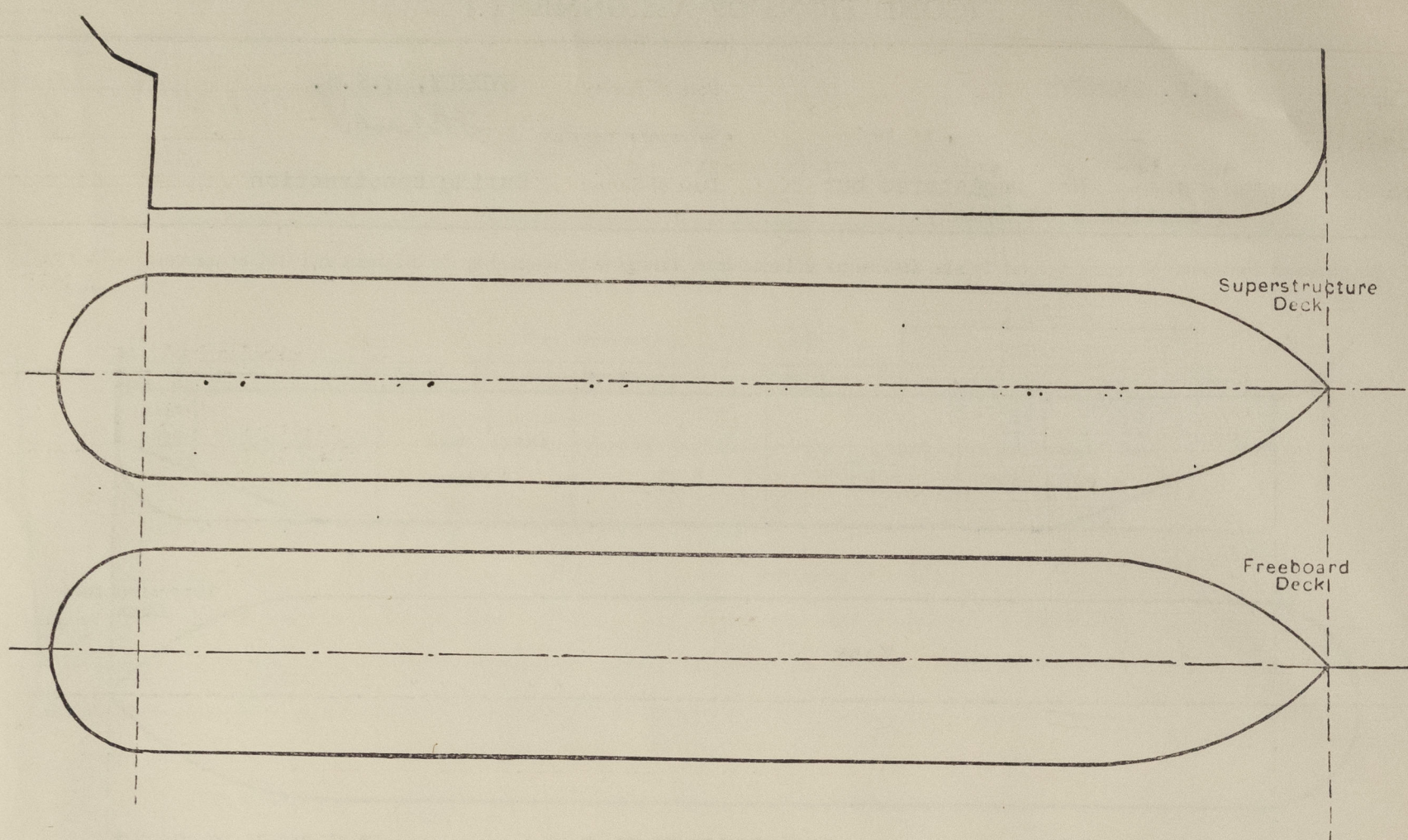
Particulars of Superstructures, Trunks, Casings, Deckhouses								
	Coaming	Plating	Stiffeners	Spacing	End Attachments of Stiffeners	Size of Openings	Height of Sills	Height of Casings
Poop Bulkhead								
Raised Quarter Deck Bulkhead								
Bridge, After Bulkhead								
Bridge, Forward Bulkhead								
Forecastle Bulkhead								
Trunk, Aft								
Trunk, Forward								
Exposed Machinery Casings on Freeboard or Raised Quarter Decks								
Exposed Machinery Casings on Superstructure Decks								
Machinery Casings within Superstructures not fitted with Class 1 Closing Appliances								
Deckhouses on Flush Deck Ships	$\frac{3}{8}$ "	$\frac{1}{4}$ "	4"x $\frac{3}{8}$ " F.B.	30"	welded top and bottom	5'0"x2'3"	18"	7'-2"

Particulars of Closing Appliances (state if capable of being manipulated from both sides)	
Poop Bulkhead	
Raised Quarter Deck Bulkhead	
Bridge, After Bulkhead	
Bridge, Forward Bulkhead	
Forecastle Bulkhead	
Exposed Machinery Casings on Freeboard or Raised Quarter Decks	
Exposed Machinery Casings on Superstructure Decks	
Machinery Casings within Superstructures not fitted with Class 1 Closing Appliances	
Deckhouses on Flush Deck Ships	Two hinged steel weathertight doors capable of being operated from both sides.



PARTICULARS OF PROTECTION TO OPENINGS, ETC.

The following diagrams should be used to indicate the positions of cargo and coaling hatchways, gangway, cargo and coaling ports, ventilators, companionways, etc., which would affect the seaworthiness of the ship:—



Particulars of fiddley, funnel and ventilator coamings, engine room skylight and other openings in machinery casing tops and their means of closing:—  
**Funnel and ventilator coamings efficiently constructed of steel and fitted with weathertight steel covers.**

**Fiddly openings in top of boiler house, port and starboard, fitted with strong hinged steel covers.**

Particulars of Flush Bunker Scuttles:—

None

Particulars of Companionways:—

None

Particulars of Ventilators in exposed positions on freeboard and superstructure decks:—

**4 - 4" dia. 18" high to forward dry compartment, provided with wood plugs.**

*OK for harbour service.*

Particulars of Air Pipes in exposed positions on freeboard, raised quarter, or superstructure decks:—

1 - 2" dia. 15" high to F.W. tank aft.  
 2 - 4" dia. 15" high to P & S aft peak compartments } **Wood plugs provided.**  
 2 - 4" dia. 15" high to fore peak.  
 2 - 6" dia. 34" high to P & S O.F. tanks (situated in manhole cover )  
 2 - 6" dia. 34" high to cargo tanks abreast Boiler Room } **Provided with wire gauze and**  
 6 - 12" dia. 38" high to P & S cargo tanks } **permanently attached weather**  
 } **tight steel covers.**

Particulars of Gangway Cargo and Coaling Ports:—

None

Particulars of Scuppers and Sanitary Discharge Pipes:—

**None leading to spaces below freeboard deck.**

Particulars of Side Scuttles:—

None

Vertical distance of Sill of lowest Side Scuttle above top of keel:— **None**

Particulars of Guard Rails:— **2 tubular guard rails 1½" dia., 18" apart, total height 3'-0", fitted all round upper deck, stanchions 5'-0" apart.**

Particulars of Gangways, Lifelines, etc.:—

None

Particulars of Freeing Arrangements

	Length of Bulwark	Height of Bulwark	Size of Freeing Ports	Number each side	Area each side	Rule area each side
After Well	} <b>Open rails all round</b>					
Forward Well						

State position of each freeing port:— After Well:—

(F. and A. position and height above deck edge) Forward Well:—

State whether the freeing ports are fitted with shutters, bars, or rails, and give particulars of such:—

Additional area where sheer is less than standard.



PARTICULARS OF PROTECTION TO OPENINGS, ETC.

HATCHWAYS ON FREEBOARD <del>XXXXXXXXXXXXXXXXXXXX</del> DECK									
Description of Hatchway		To cargo tanks	To fore. dry comp.	Manholes to fore & aft peak spaces	Manholes to topside tanks abreast pump room				
Dimensions of Hatchway		48"x36"	48"x 36"	4 @ 21"x15"	4 @ 21"x15"				
COAMINGS	Height above Deck	18"	18"	Coaming 9"x $\frac{3}{8}$ " welded to deck. Cover $\frac{3}{8}$ ", secured by bolts at W.T. pitch.	Coaming 9"x $\frac{3}{8}$ " welded to deck. Cover $\frac{3}{8}$ ", secured by bolts at W.T. pitch.				
	Thickness { Sides Ends	$\frac{3}{8}$ "	$\frac{3}{8}$ "						
	Stiffeners	-	-						
	Brackets, Stays	-	-						
HATCH BEAMS	Number Spacing Scantling and Sketch								
	Bearing Surface								
FORE AND AFTERS	Number Spacing Unsupported Lengths Scantling* and Sketch								
	Bearing Surface								
HATCH COVERS	Material Thickness	Steel $\frac{3}{8}$ "	Steel $\frac{1}{4}$ "						
	How fitted Bearing Surface	hinged W.T.	hinged W.T.						
Spacing of Cleats		Secured by 12 toggles	Secured by 12 toggles						
Number of Tarpaulins									
<p>*Are wood fore and afters steel shod at all bearing surfaces? -</p> <p>Are battens and wedges efficient and in good condition? -</p> <p>Are tarpaulins in good condition and in accordance with rule requirements? -</p> <p>Are lashings provided in accordance with rule requirements? -</p>									

Particulars of any special features:—

Endorsement at first survey and at surveys for renewal of Certificate:—

The fittings and appliances are in accordance with the particulars shown on this form (or as now modified) and are in good condition.



© 2021

Lloyd's Register Foundation