

SECRET AND CONFIDENTIAL.

NOS 1032-1034.

RUDDER FRAME.

SCALE 2" = 1 FOOT

NOTES

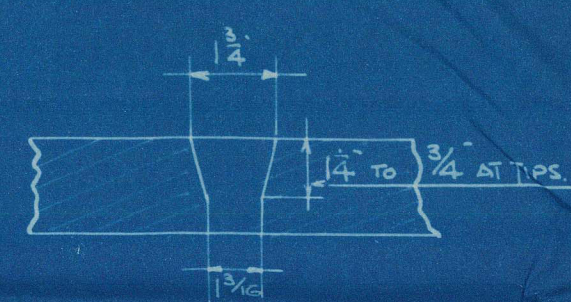
RUDDER FRAME IN 2 PIECES WITH COUPLING AS SHOWN.
 STOCK + MAINPIECE TO BE FORGED IN HOT STEEL, PREPARED BY ADMIRALTY, WITH ARMS SHOWN ON
 AND KEYED TO MAINPIECE.
 LOOSE STEEL PINTLES TO BE AS SHOWN IN DETAIL.
 RIVET HOLES $1\frac{3}{16}$ DIA FOR $1\frac{1}{8}$ RIVETS SPACED AS SHOWN AND
 COUNTERSUNK AS PER DETAIL.
 CENTRE LINE OF PINTLES + STOCK TO BE IN A PERFECTLY STRAIGHT
 LINE AND SQUARE TO BASE LINE.
 FORE SIDE OF MAINPIECE TO BE PARALLEL TO CENTRE LINE OF PINTLES
 KEYWAYS FOR CROSSHEAD + TILLER TO BE ACCURATELY CUT TO
 DIMENSIONS GIVEN LATER.
 LENGTH OF STOCK TO BE CONFIRMED LATER.
 SPACING OF GUDGEONS TO BE CONFIRMED FROM STERN FRAME.
 ALL MACHINING AND DRILLING TO BE DONE BY MAKERS.
 RUDDER PLATE SUPPLIED AND FITTED BY S.H. & W.R. LTD.

THE DIMENSIONS GIVEN ON THIS PLAN SHOULD BE CAREFULLY
 WORKED TO AS WE ONLY PAY ON CALCULATED WEIGHTS.
 ANY ALTERATIONS MADE TO BE NOTIFIED TO S.H. & W.R. LTD.

FRAME TO LLOYDS SURVEY & TESTS

FORGING NOT TO BE BLACKED BUT MAY RECEIVE A COAT OF OIL.

COUNTERSINKING OF RIVET HOLES

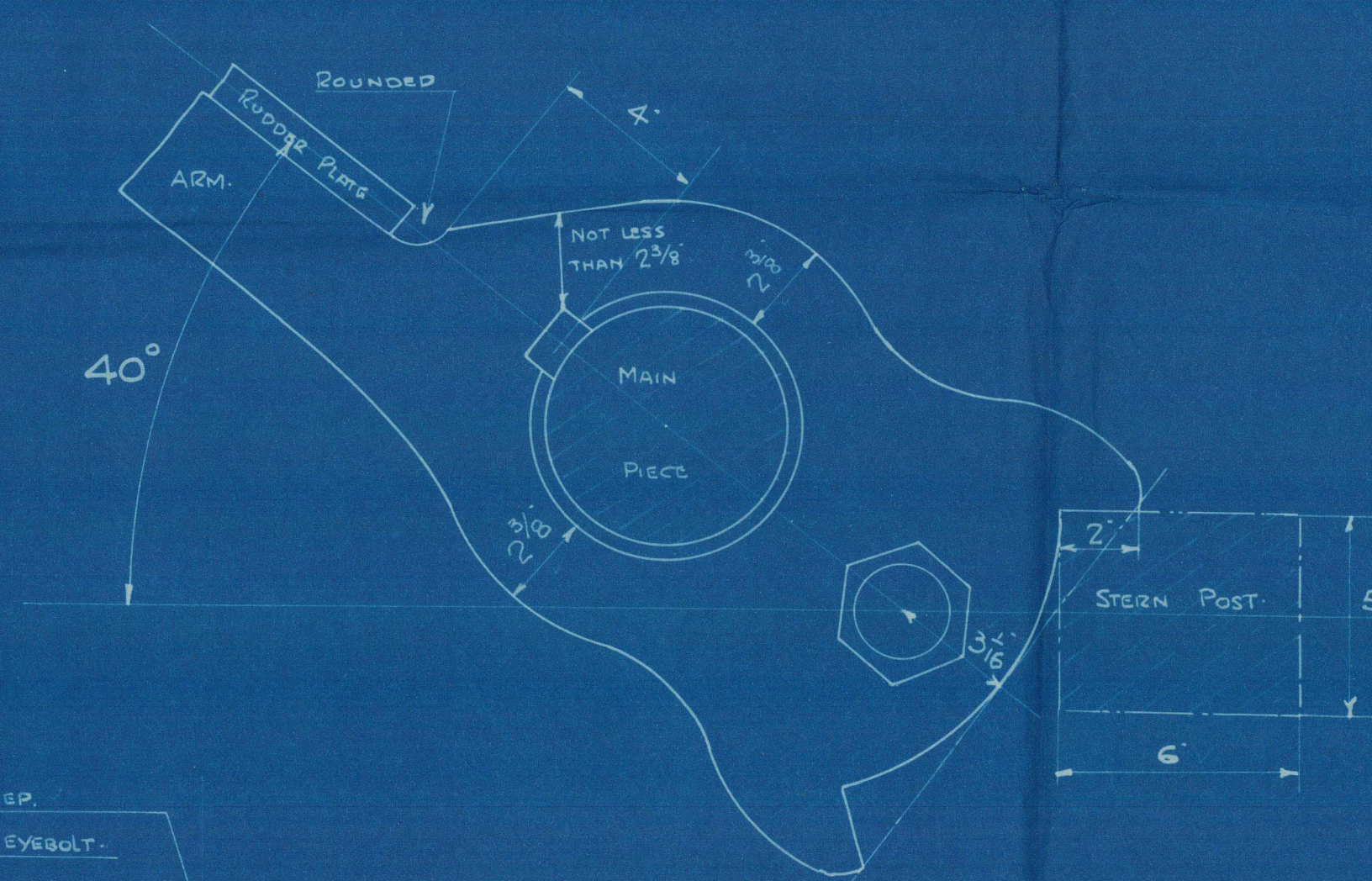


RIVET HOLES $1\frac{3}{16}$ DIA FOR $1\frac{1}{8}$ RIVETS
 SPACED 5" APART C TO C.

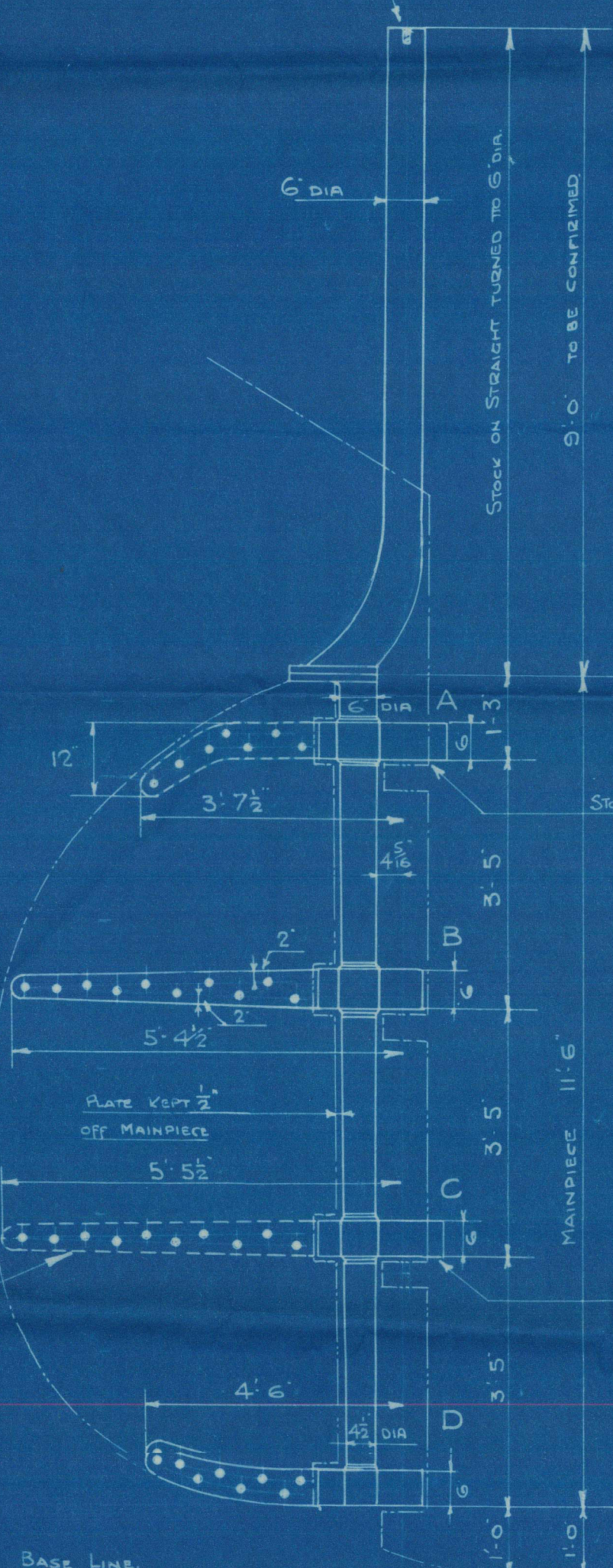
THE RUDDER HEAD & ALL GEAR IN CONNECTION WITH THE STEERING
 ARRANGEMENTS, INCLUDING STEERING CHAINS, RODS, ETC TO BE DESIGNED
 FOR A SPEED OF NOT LESS THAN 12 KNOTS, WHEN BEING TOWED.

DETAIL OF STOPPER AT 'A' & 'C'

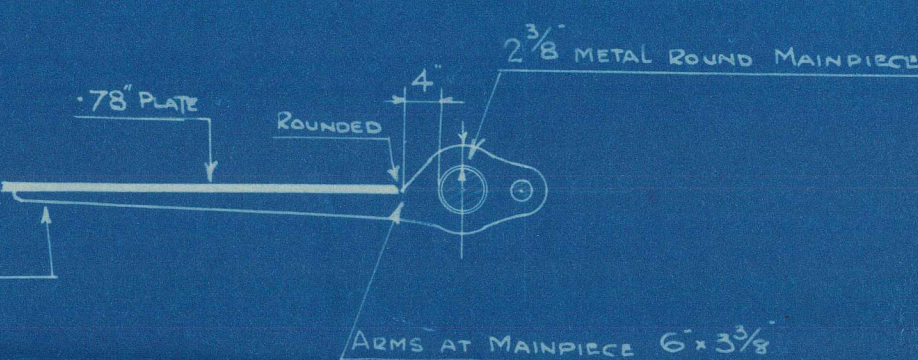
SCALE 3" = 1 FOOT



HOLE $1\frac{1}{4}$ DIA 3" DEEP.
 SECURED TO TAKE EYEBOLT.



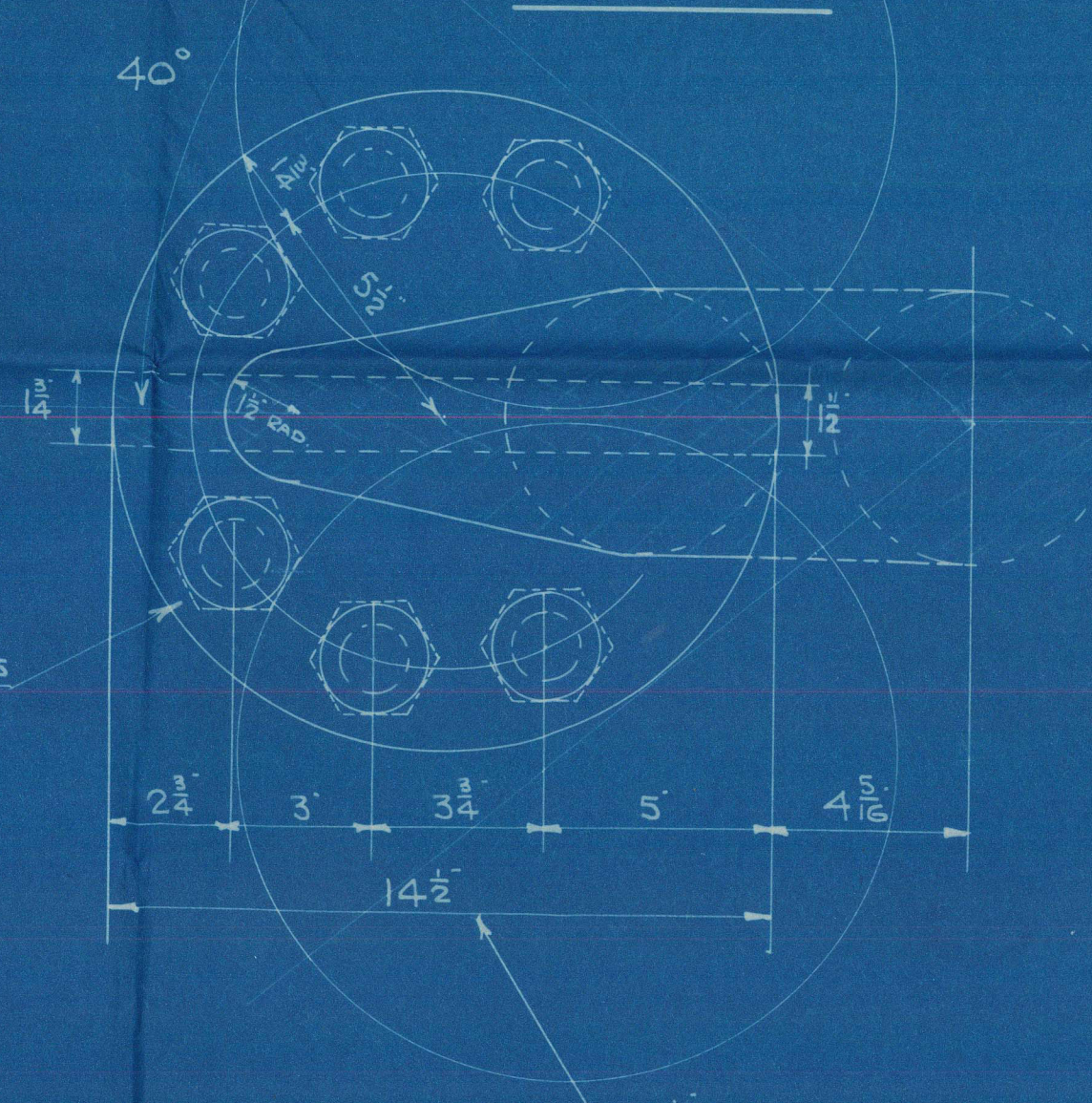
BASE LINE.



6 - $1\frac{1}{2}$ DIA BOLTS

DETAIL OF COUPLING

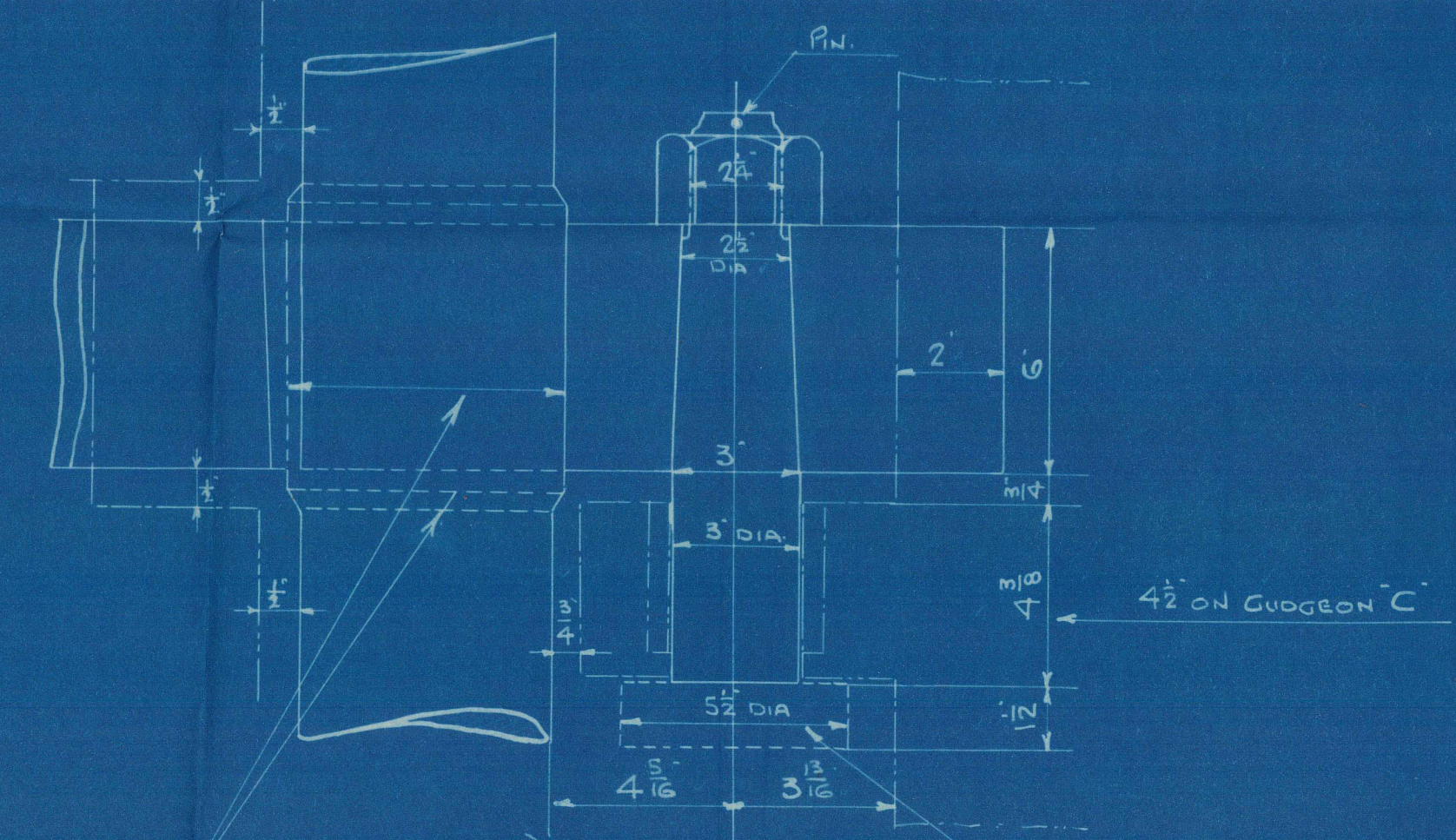
SCALE 3" = 1 FOOT



14 1/2 FOR COUPLINGS TO CLEAR
 AT 40°

DETAIL OF GUDGEON 'A' & 'C'

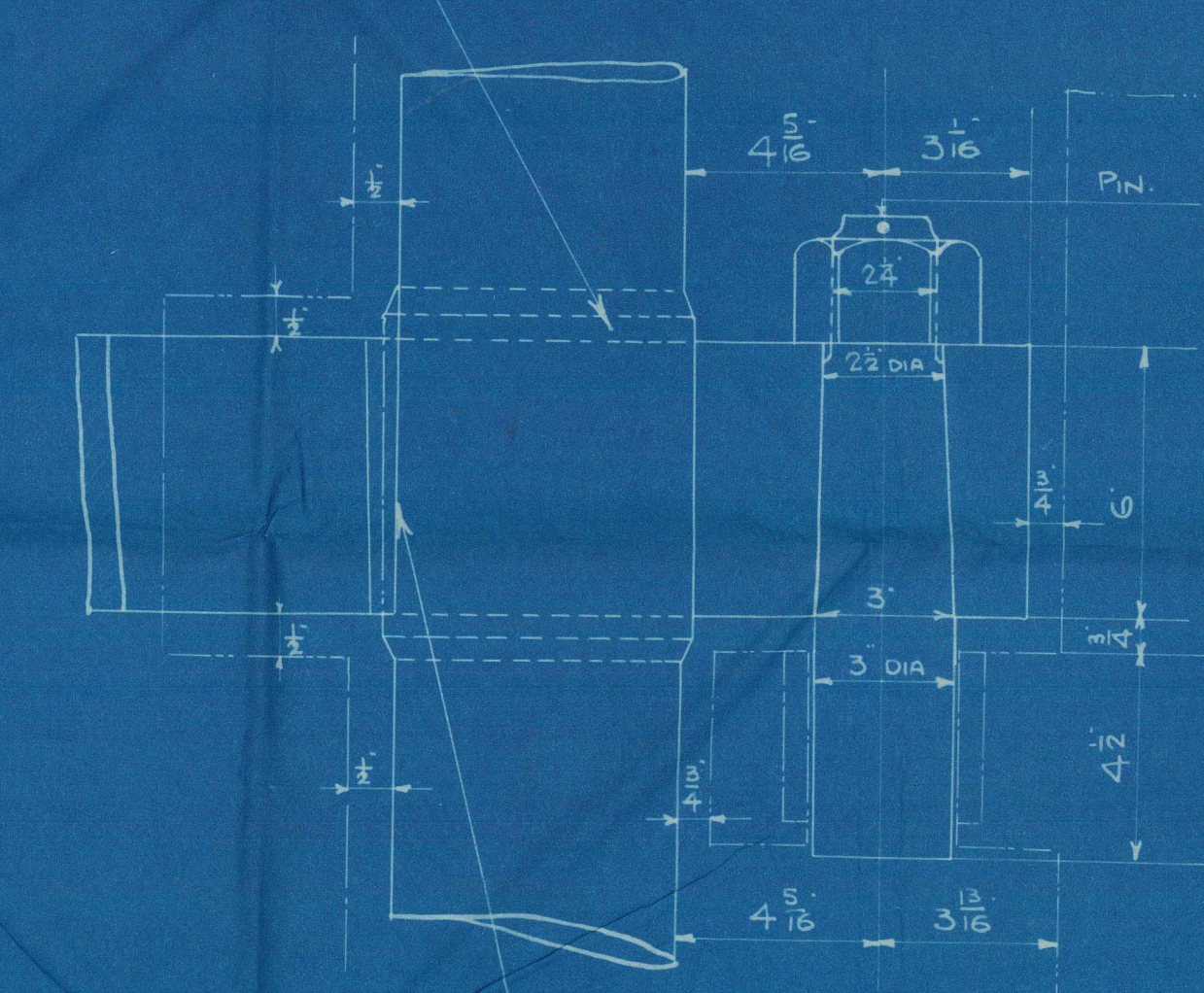
SCALE 3" = 1 FOOT



LOCKING PIN ON GUDGEON 'A'
 ONLY.

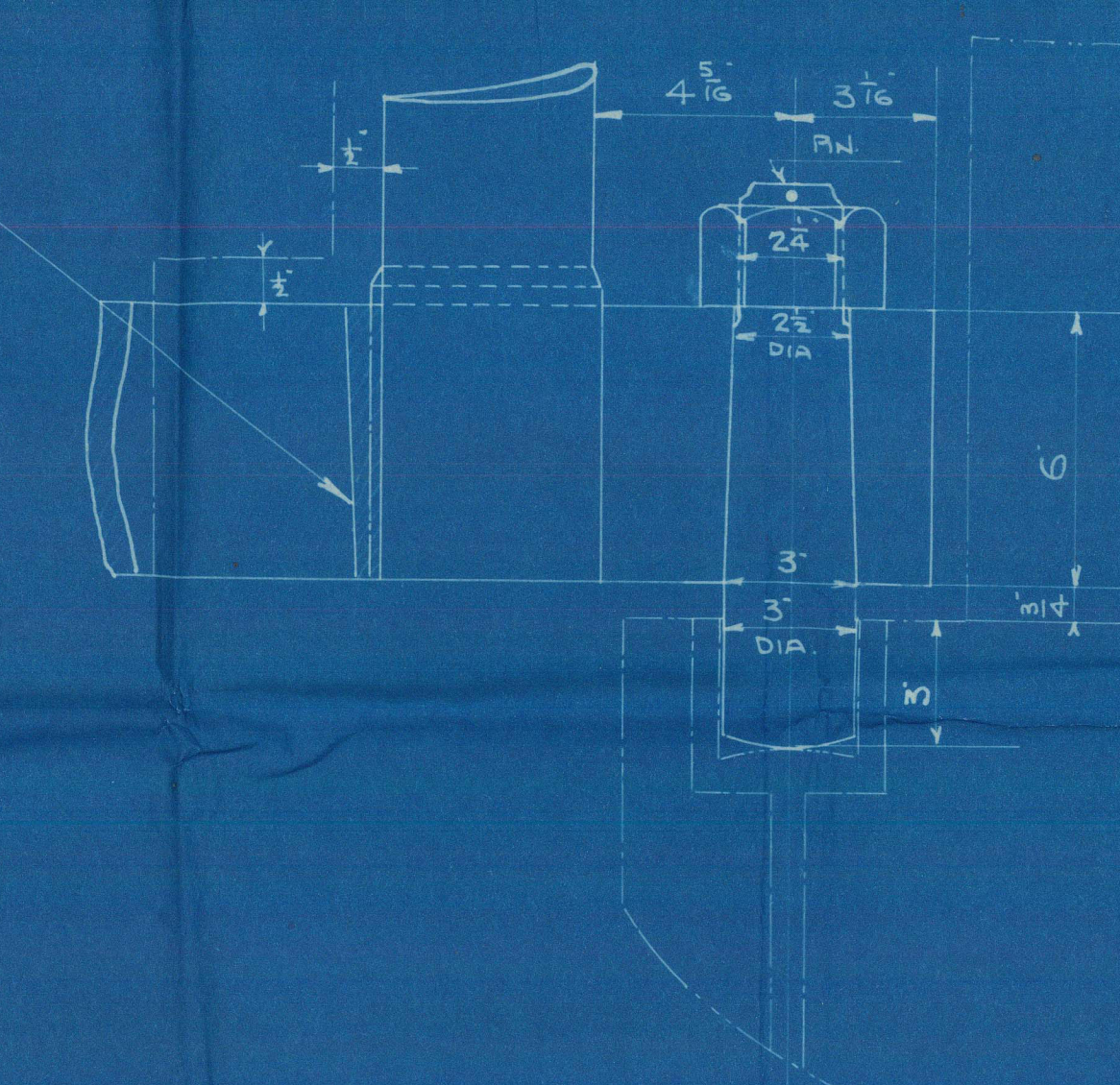
DETAIL OF GUDGEON 'B'

SCALE 3" = 1 FOOT

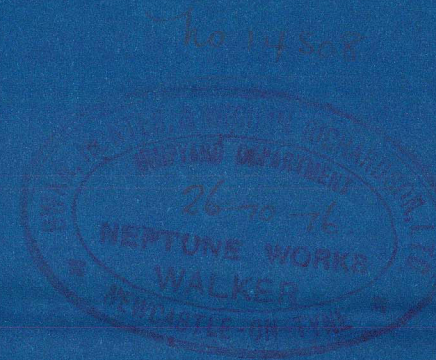


DETAIL OF GUDGEON 'D'

SCALE 3" = 1 FOOT



KEYWAYS TO HAVE A BREADTH OF 20% OF THE DIA
 OF THE MAINPIECE AT EACH RESPECTIVE ARM
 THE THICKNESS OF KEYWAYS TO BE EQUAL TO HALF
 THAT BREADTH AT THE BOTTOM AND INCREASED
 1/4 AT THE TOP.

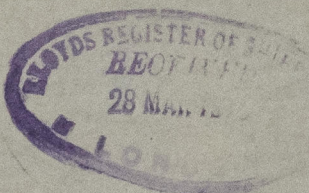


011805-011812-0228

Rudder Plan

GLASGOW REPORT no. 37583

R. F. A. Hickox



© 2021

Lloyd's Register
Foundation

011805-011812-0228