

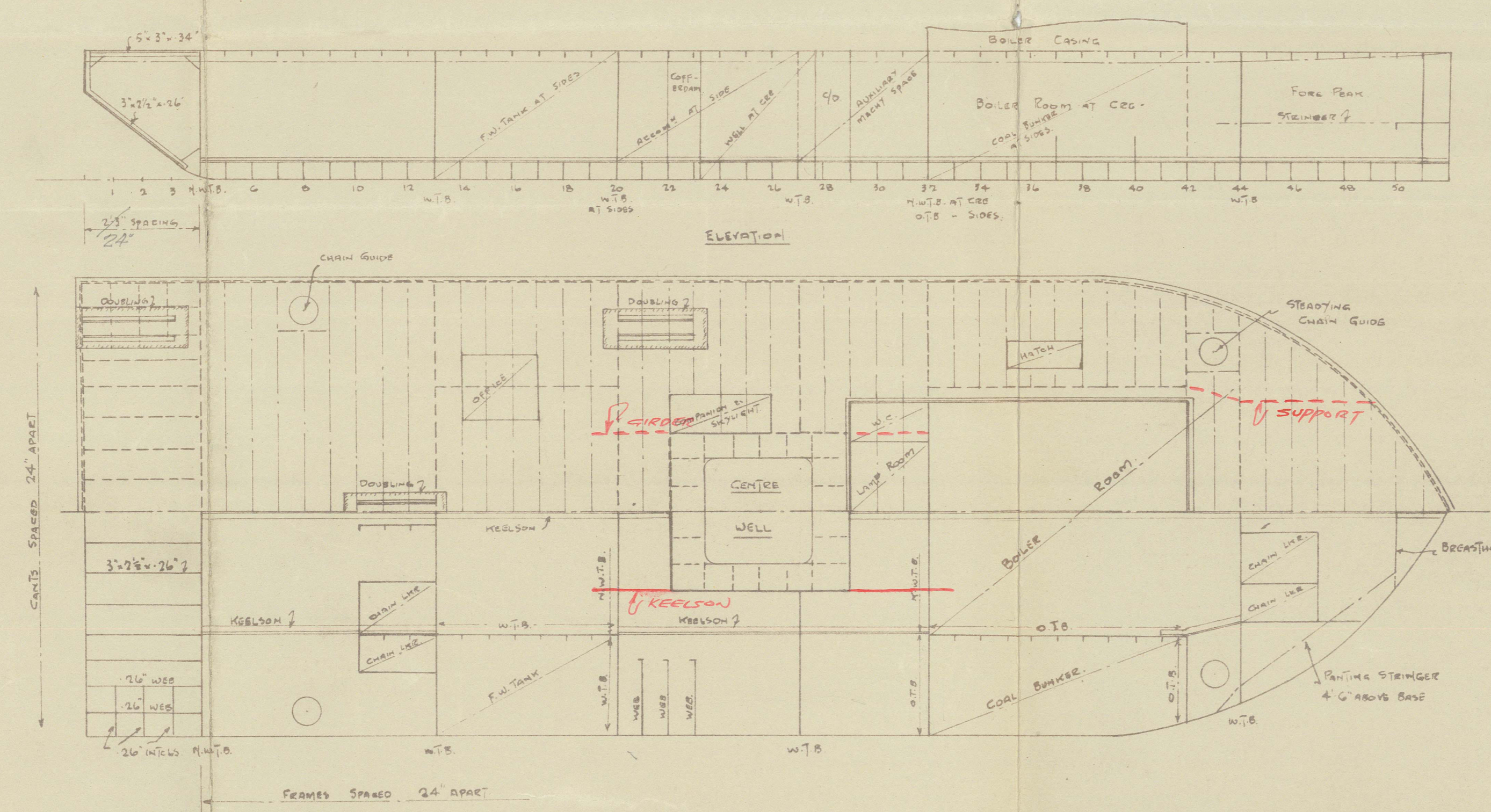
CLASS LLOYDS 100 A.I. A ROCKCUTTER (NON-PROPELLING)

DIMENSIONS

LENGTH	105'-0"
BREADTH MOULDED	35'-0"
DEPTH MOULDED	9'-0"
DRAFT MOULDED	5'-9"

SCANTLING

SIDE FRAMES	CLASH OF BUNKER SPACED 24" APART	4" x 2 1/2" x 26"
BOTTOM	ORDINARY	8" x 2 1/2" x 31"
FLOORS	ORDINARY	15" x 3 1/2" PL. 3" ON TOP
BEAMS	FULL WIDTH	5" x 3" x 34" BA
BEAMS	AT CASING SIDE	5" x 3" x 34"
BEAM KNEES		14" x 10" x 2 1/2"
CENTER KEELHOLM PLATE		5" x 3" x 38" - 3" FEET - 48"
SIDE RANGLE		4" x 3" x 28" - 28" PLATE
W.T. BULKHEAD FRAMES		2 1/2" x 2 1/2" x 37" CLEAR OF TANKS
PLATING		27" x 32" THROUGHOUT
SHEERSTRAKE		5" x 3" x 32" SEE BULKHEAD PLAN
SHELL PLATING	BOTTOM & SIDE	32
SHEERSTRAKE		32
KEEL		4 1/2" x 36" - 39" THROUGHOUT
DECK PLATING	CHEQUER	36" - 32" THROUGHOUT
STRONG		36" - 32"

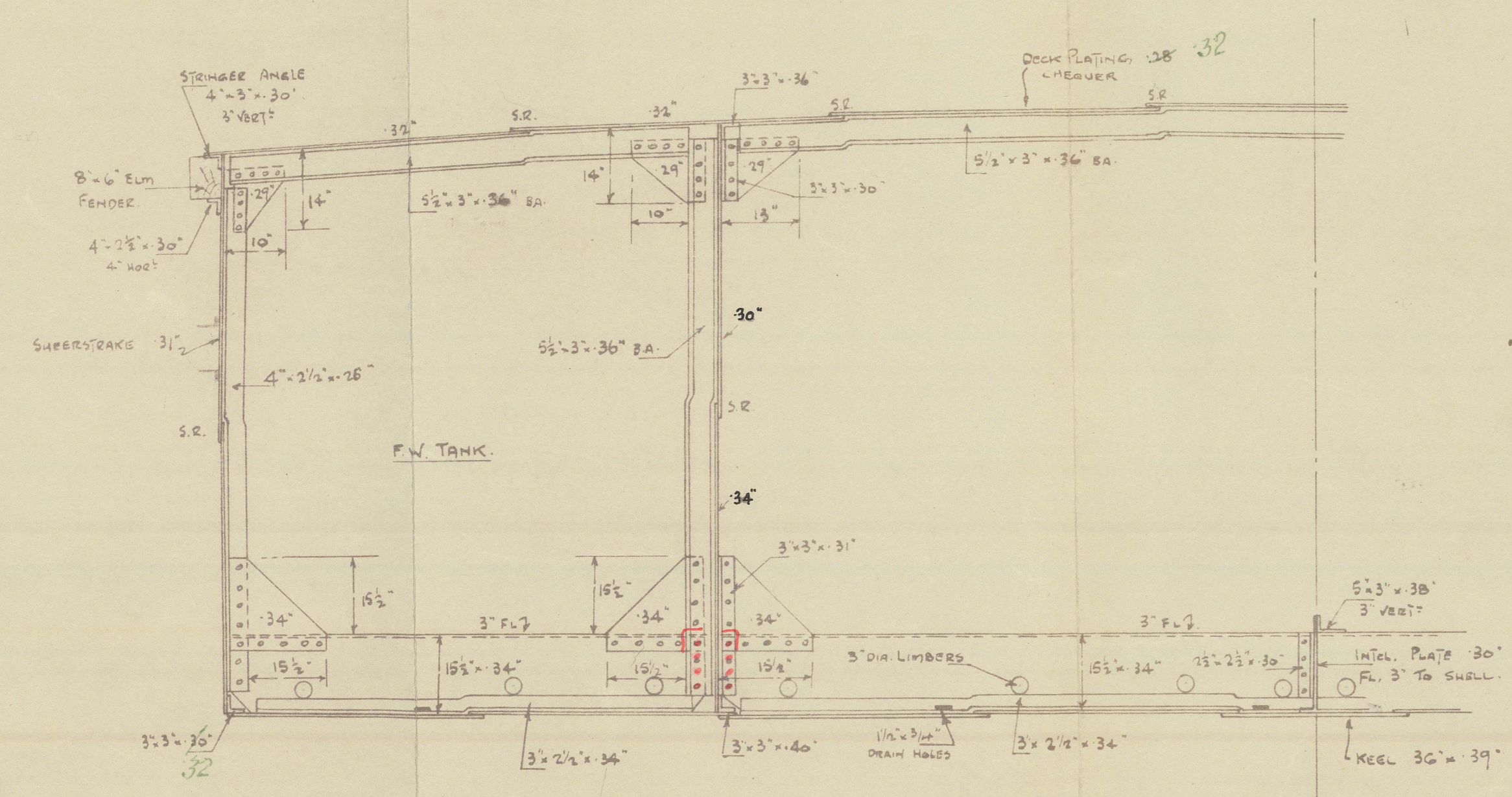


RIVETING LIST

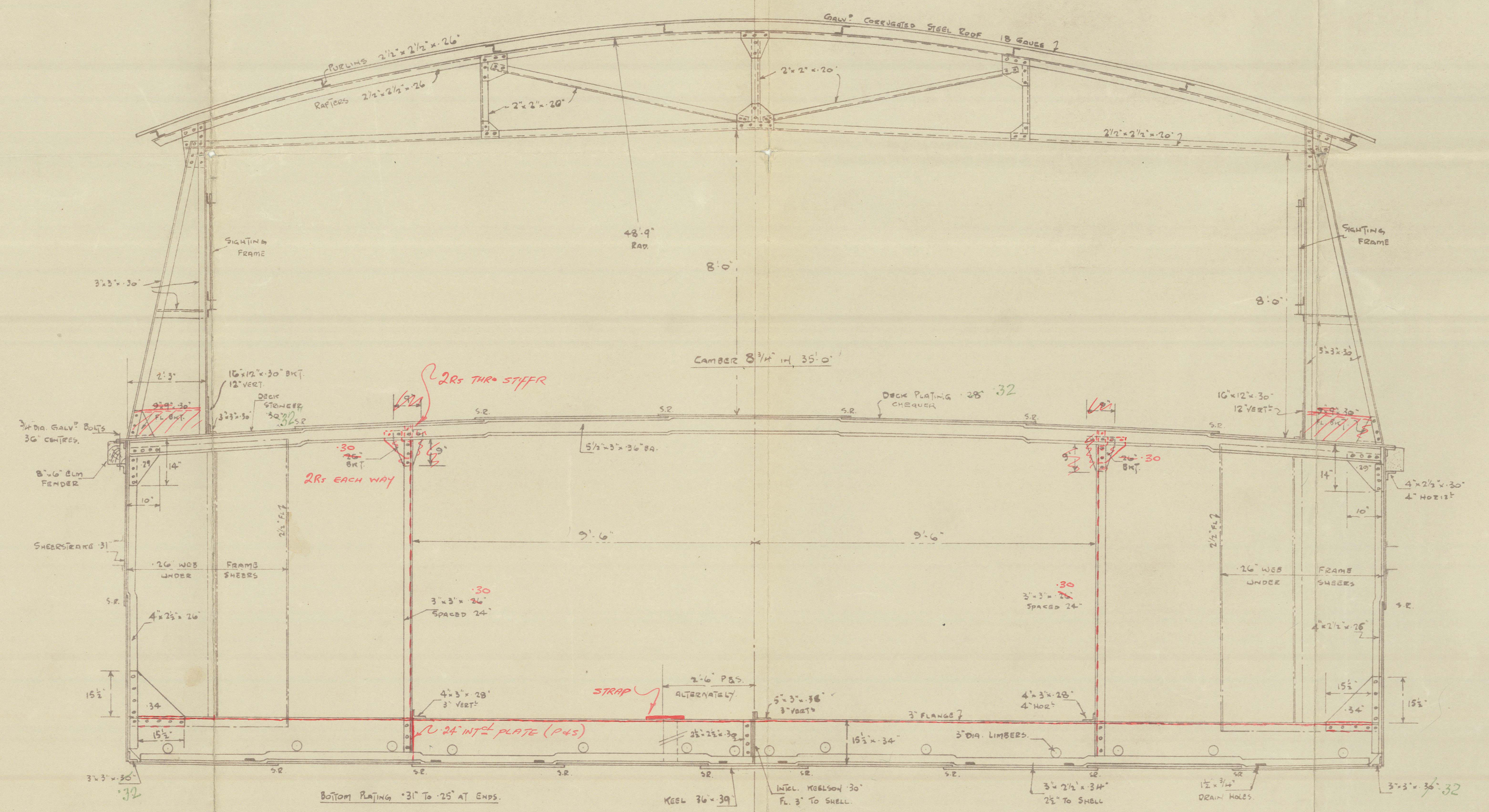
ITEMS	STEAM LBS	DIA. OF RIVET	SPACING
FRAMES TO SHELL, BEAMS, FLOORS, AND KEELSONS	50	5/8"	4 1/2"
SHELL BEAMS BOTTOM & SIDES	50	5/8"	2 1/4"
BUTTS	50	5/8"	2 1/4"
DECK BEAMS	50	5/8"	2 1/4"
BUTTS	50	5/8"	2 1/4"
DECK STRINGER PANELS	50	5/8"	2 1/4"
W.T. BULKHEAD FRAME ANGLE TO SHELL & DECK	50	5/8"	3 1/8"
TO BULKHEAD	50	5/8"	2 1/4"
BEAMS & BUTTS	50	5/8"	2 1/4"
STIFFENERS TO END	50	5/8"	4 1/2"
BOTTOM CORNER ANGLE	50	5/8"	2 1/4"

EQUIPMENT

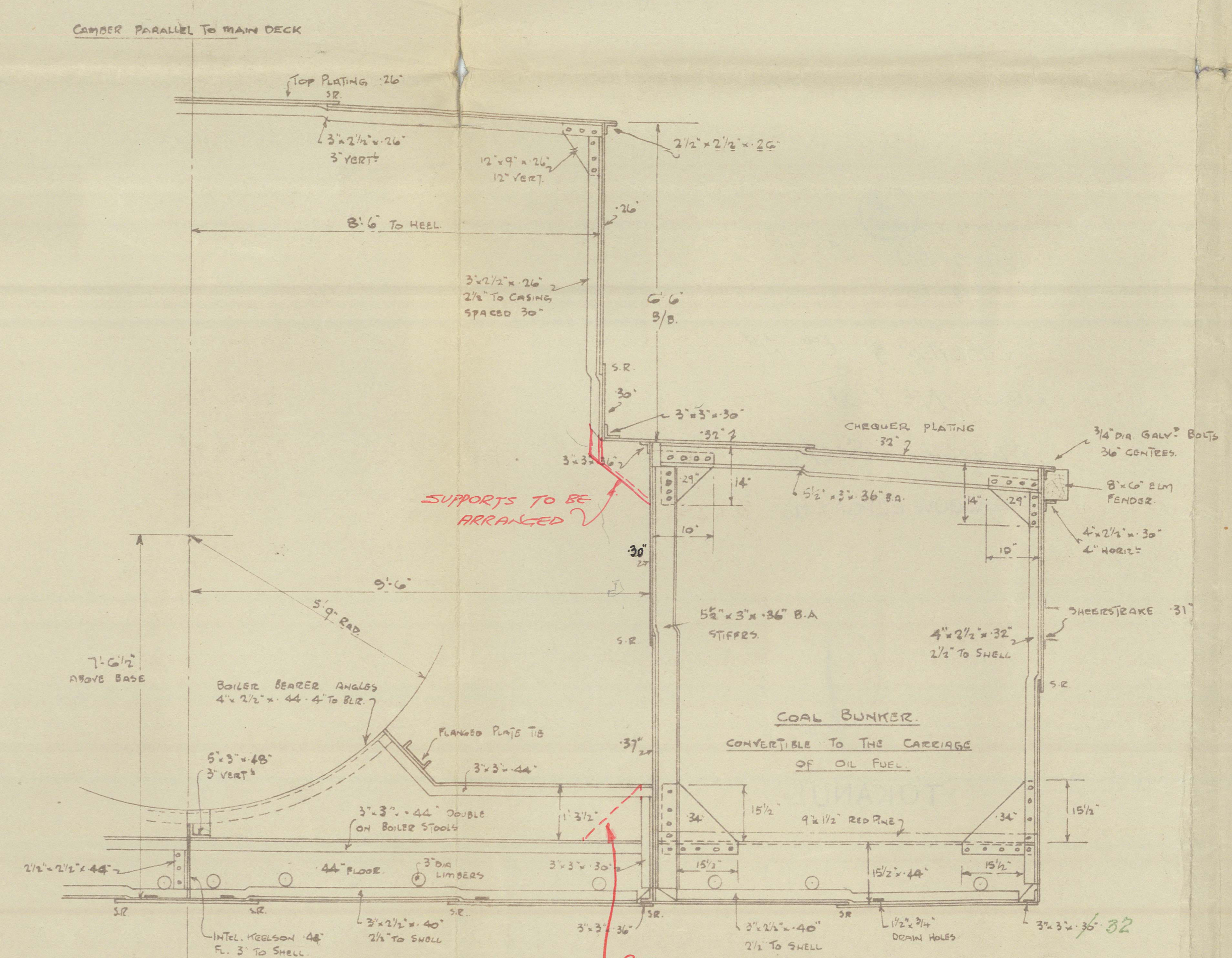
- 8 ANCHORS EACH 60 CWTs
- 2520 FEET 3/16" DIA. SHORT LINK CHAIN CABLE
- 2520 " 1/4" " " " " "



HALF SECTION IN WAY OF F.W. TANKS



SECTION IN WAY OF ACCOMMODATION



HALF SECTION IN WAY OF BUNKER


LOBNITZ & CO. LTD  
ENGINEERS & SHIPBUILDERS  
RENFREW

MIDSHIP SECTION

SCALE: 1/2" = 1 FOOT

DESIGN BY: J. MacLean  
CHECKED BY: J. D. Fleming  
APPROVED BY: C. J.  
DATE: 16th Nov. 1951

SECT. NO. 1211  
DWG. NO. 18373  
07021

  
Millen Bras. Ld

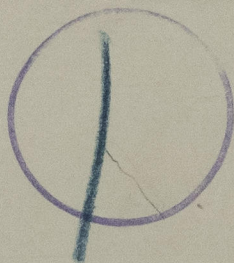
Nº 165

Labnitz & Co Ld  
Design-Nº 1131

Midship Section.

GLASGOW REPORT No. 62240

RECORDS DEPT.,  
LONDON.



•TOKANUI-



© 2021

Lloyd's Register  
Foundation