

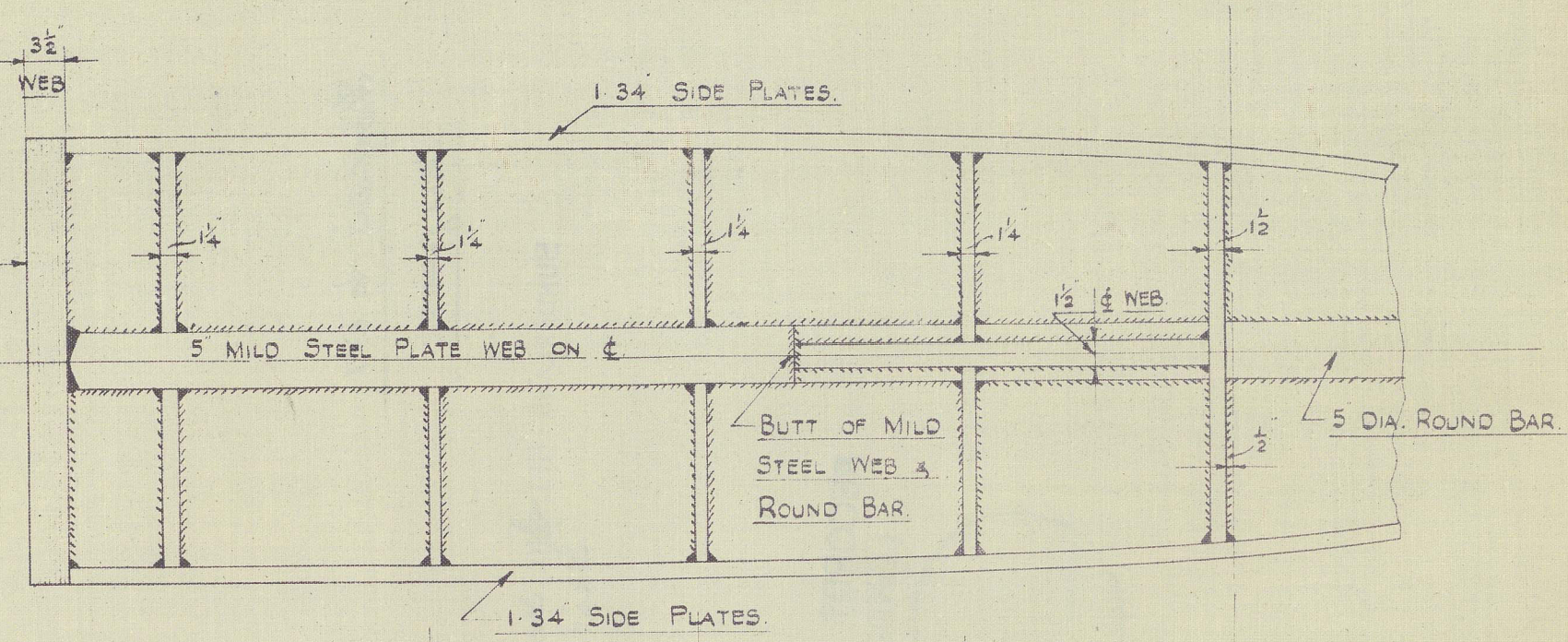
M.V. No 677  
FABRICATED MILD STEEL  
STERN FRAME.

TO PASS LLOYD'S REQUIREMENTS FOR OIL TANKERS.

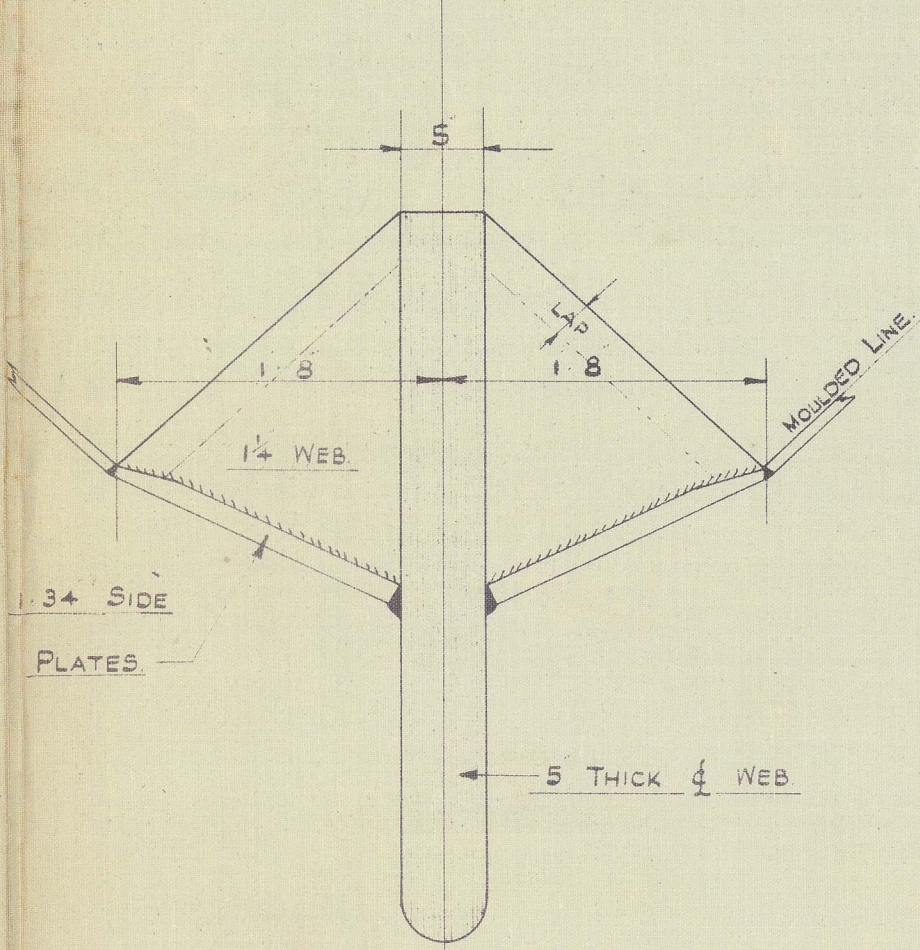
SCALE: 1/2" = 1' 0"

PRINCIPAL DIMENSIONS OF VESSEL  
LENGTH B.P. 516' 0"  
BREADTH MOULDED 73' 0"  
DEPTH MOULDED 41' 1"  
RULE SIZE OF STERN FRAME 9' 4" x 11' 8"  
RUDDER HEAD 12' DIA.

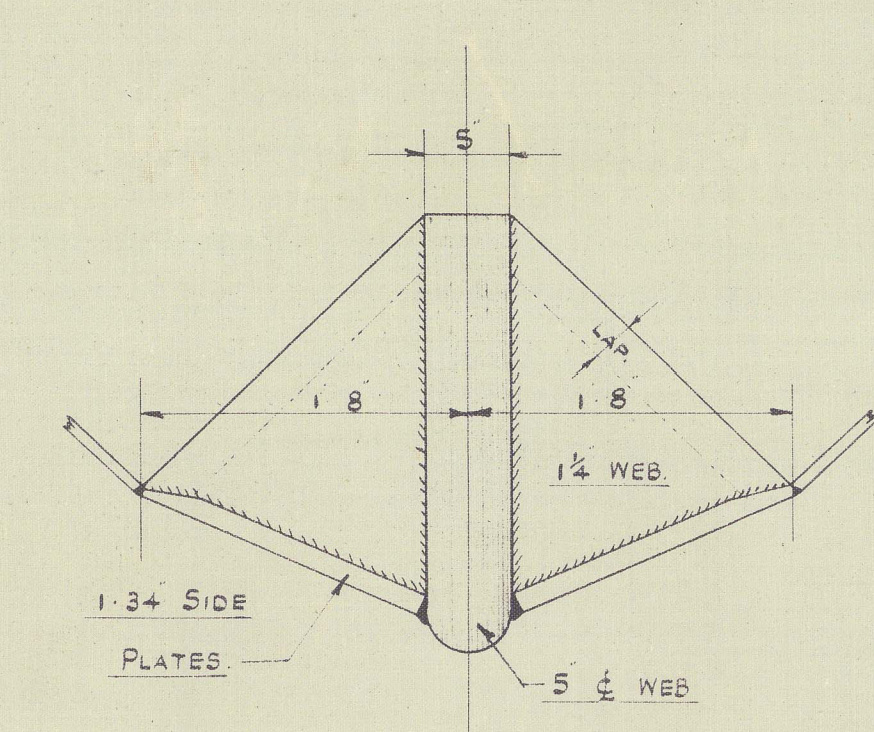
PLAN VIEW ON TOP OF FRAME



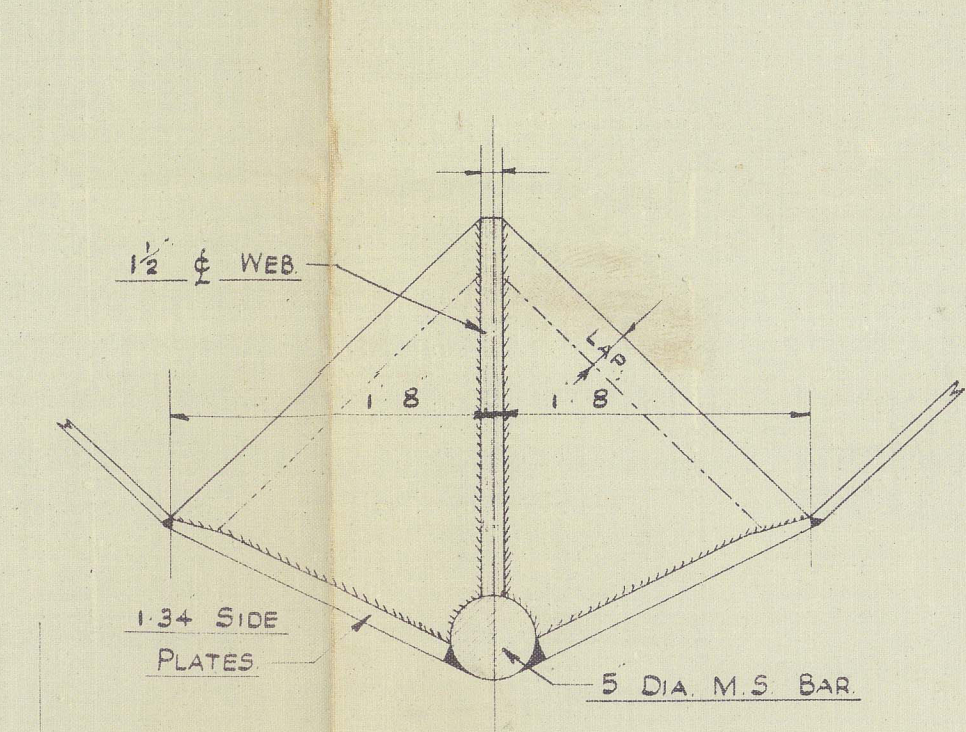
SECTION AT NO 2 FRAME



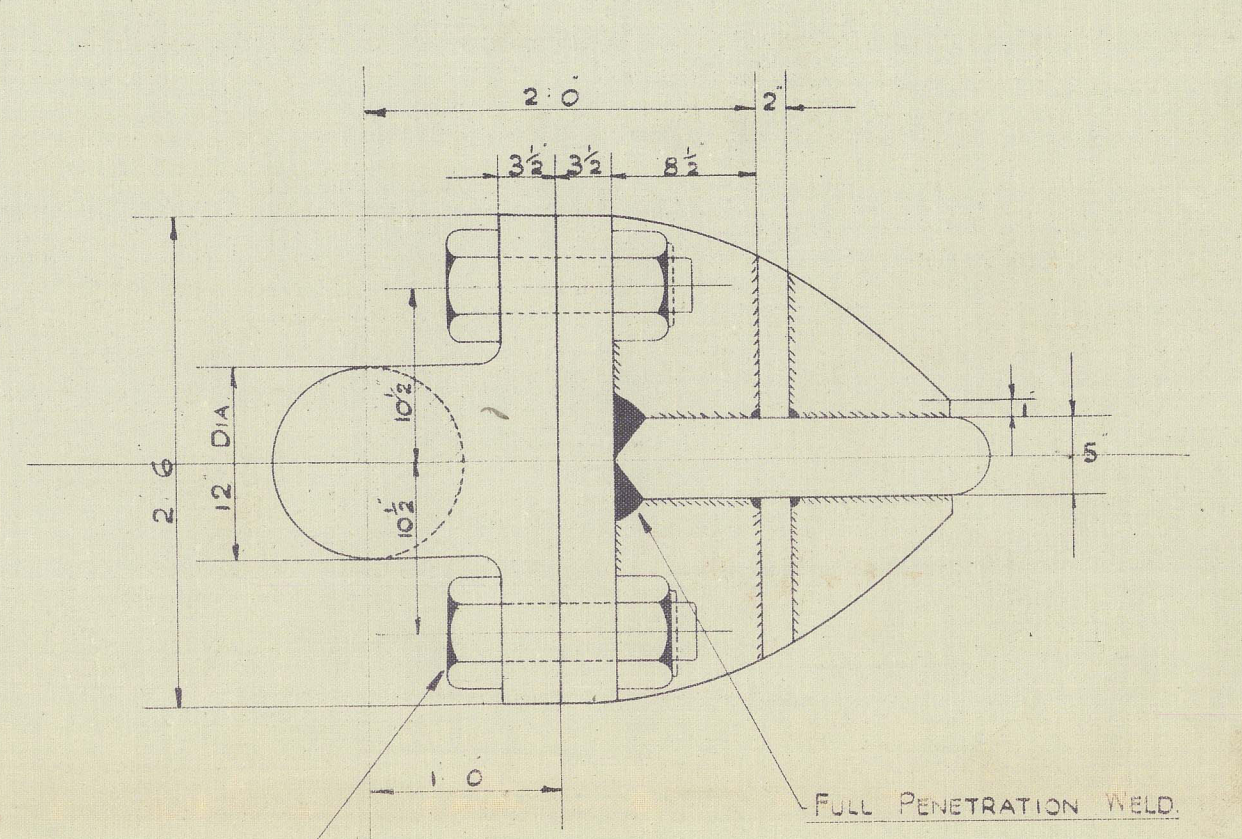
SECTION AT NO 3 FRAME



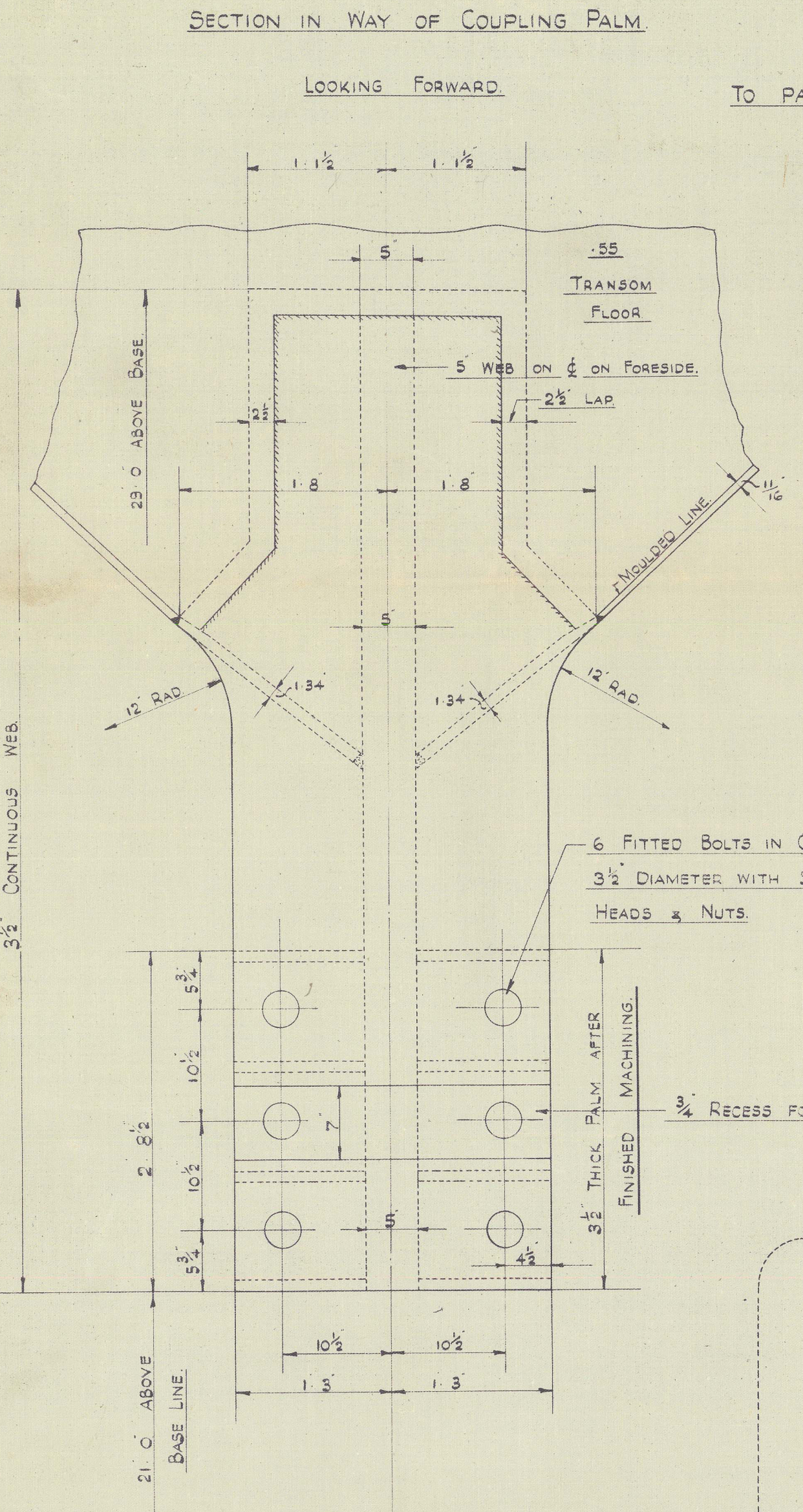
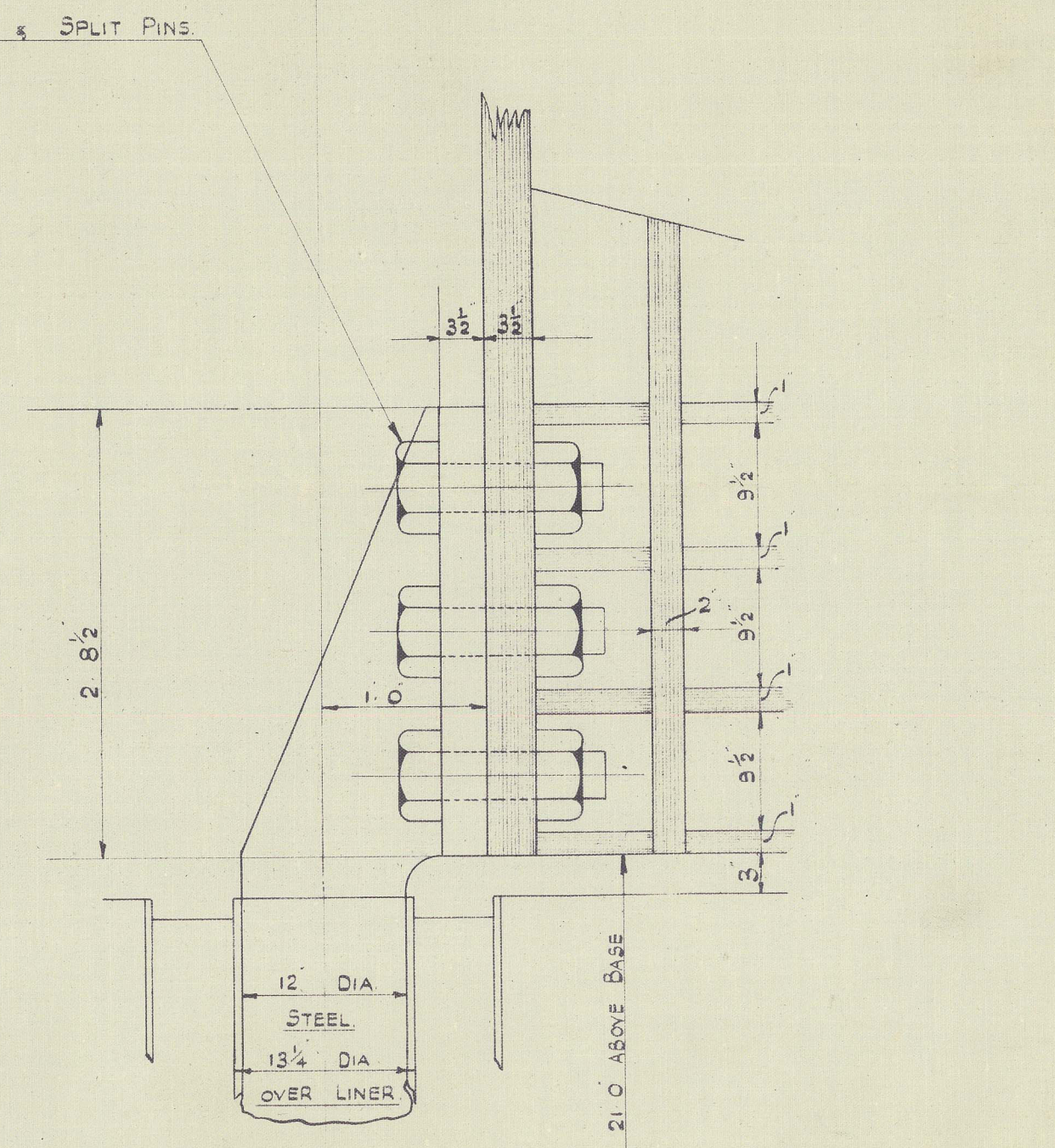
SECTION AT NO 4 FRAME



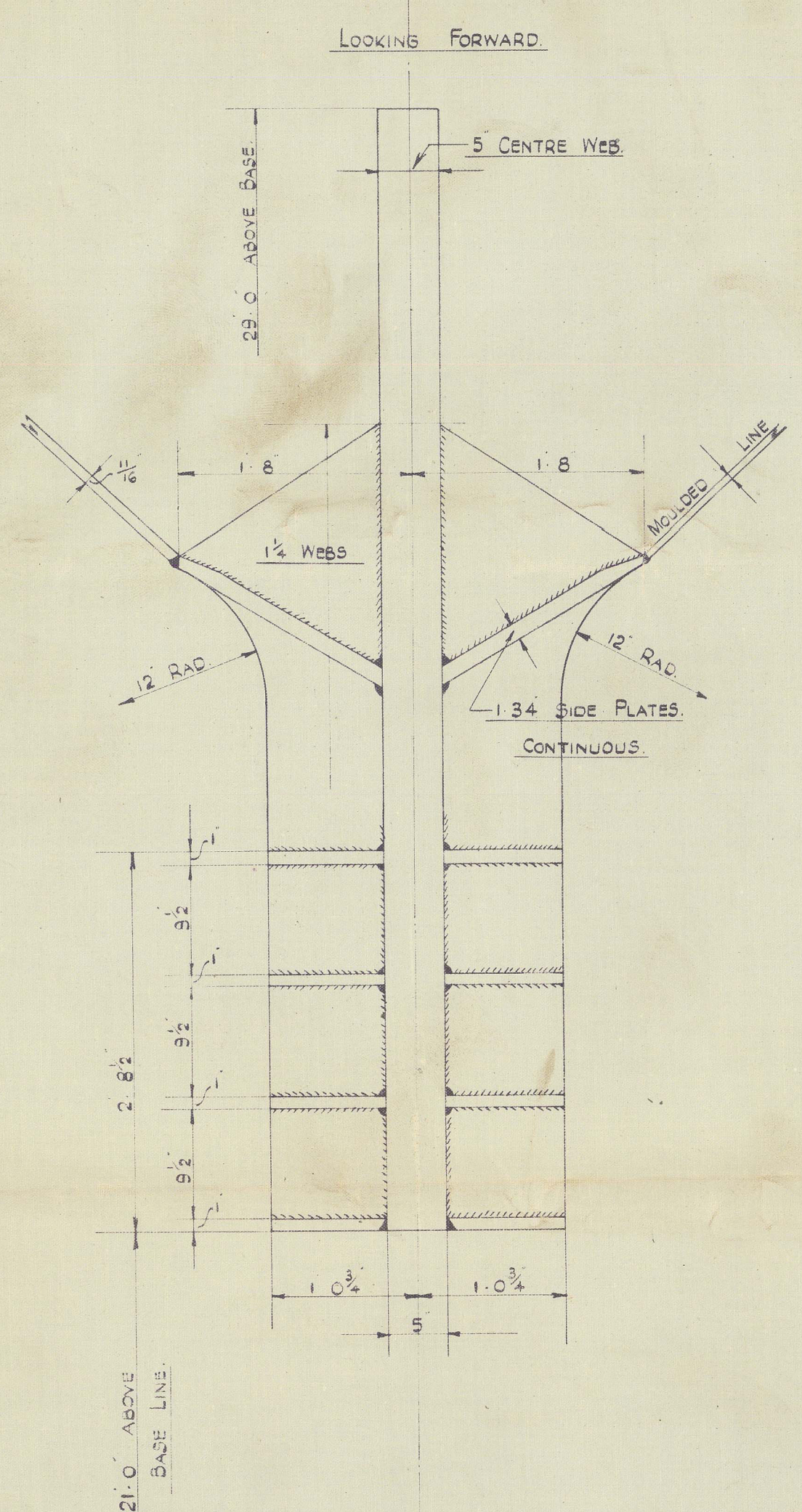
PLAN VIEW OF COUPLING



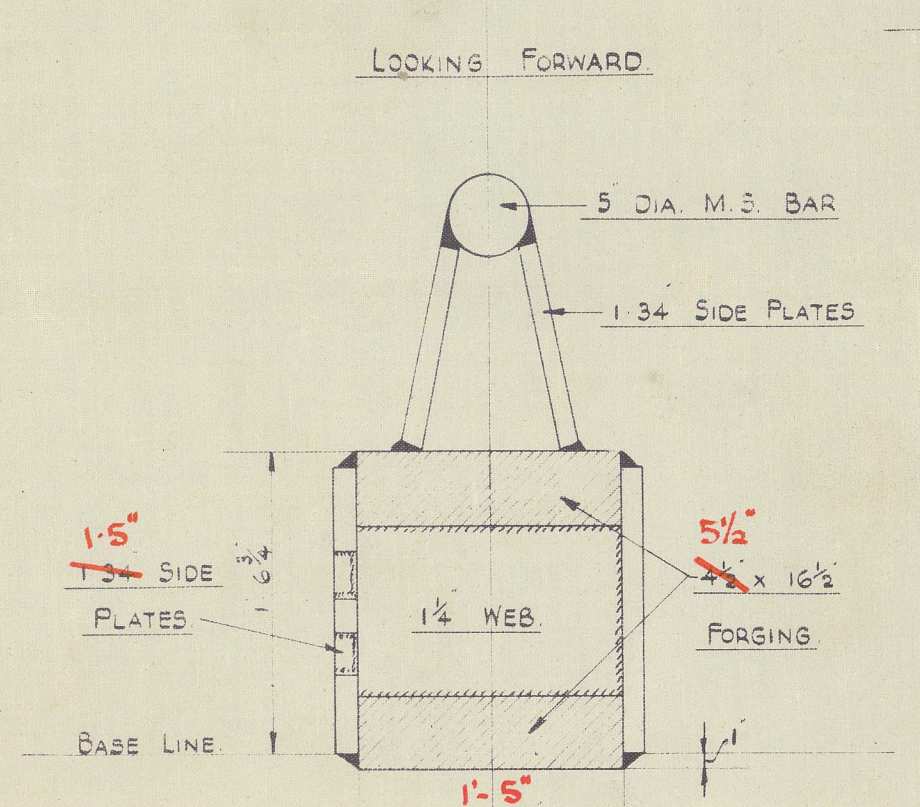
ELEVATION OF COUPLING



SECTION AT NO 1 FRAME

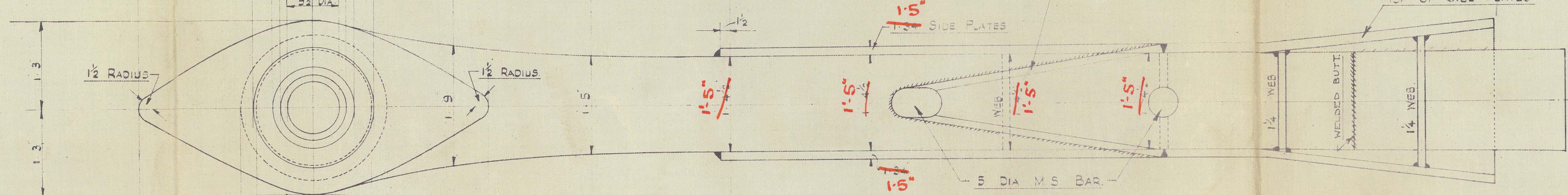


SECTION AT NO 5 FRAME



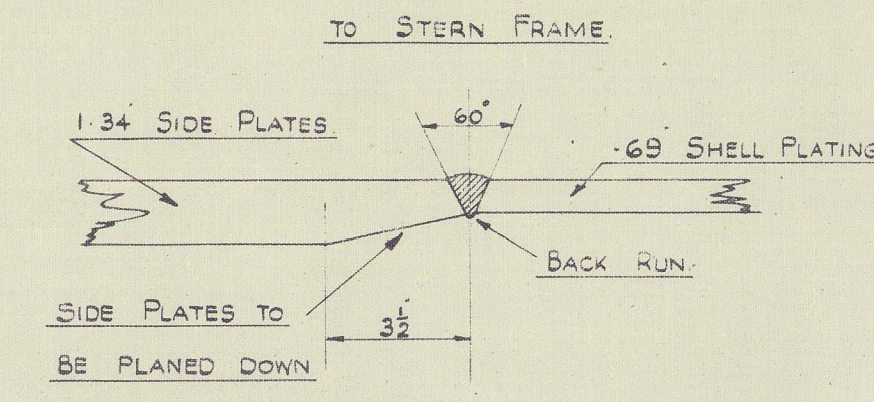
RUDDER AREA 216' 3" x 30' 0"  
C.B. AREA 6' 0" x 25' 0"  
NUMERICAL 492  
SERVICE SPEED 14 KNOTS  
RULE DIA. OF RUDDER HEAD 12' DIA.

PLAN VIEW OF SOLE PIECE

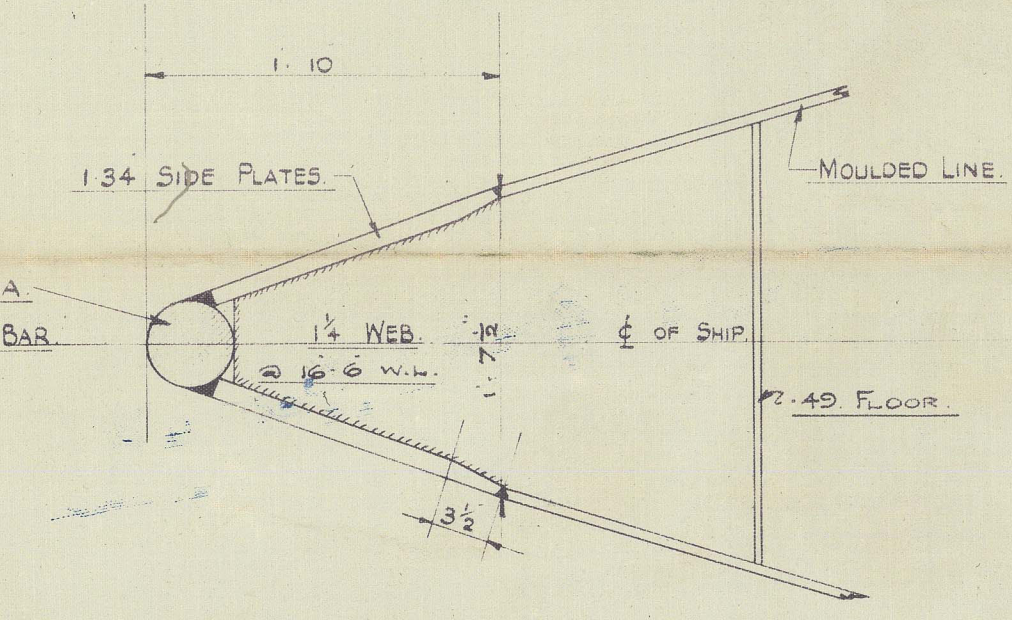


SEE SEPARATE PLAN SHOWING AMENDED SOLEPIECE.

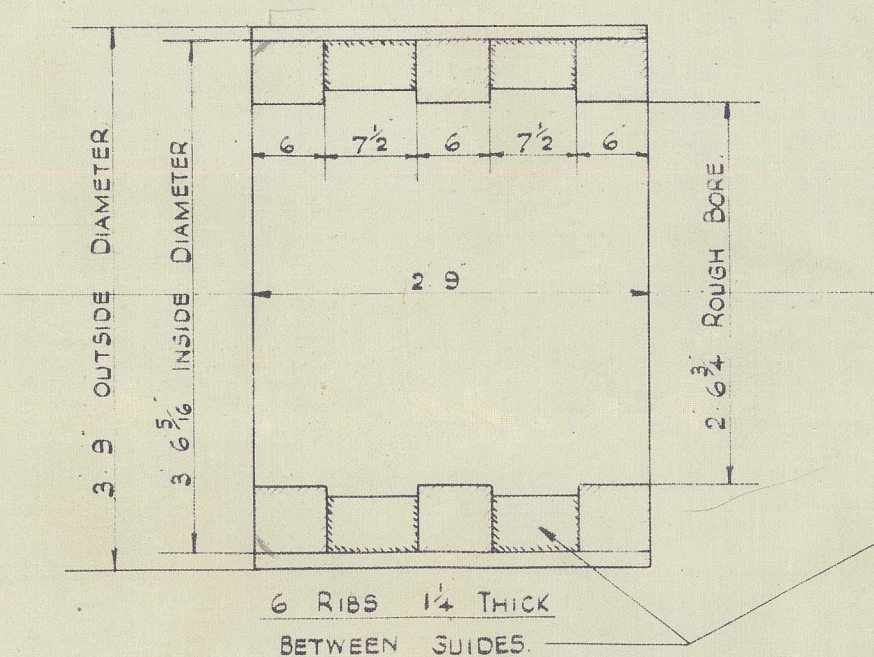
CONNECTION OF SHELL PLATING TO STERN FRAME



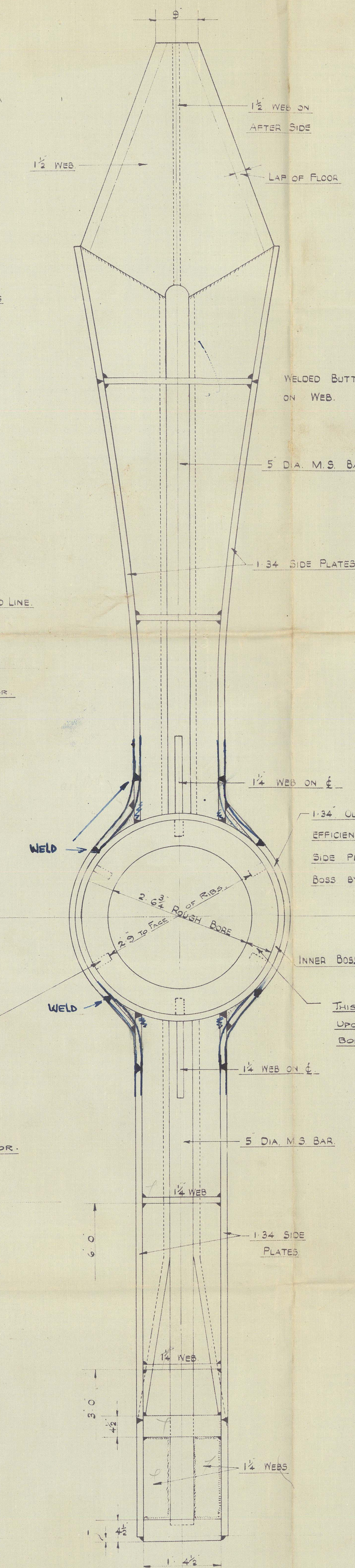
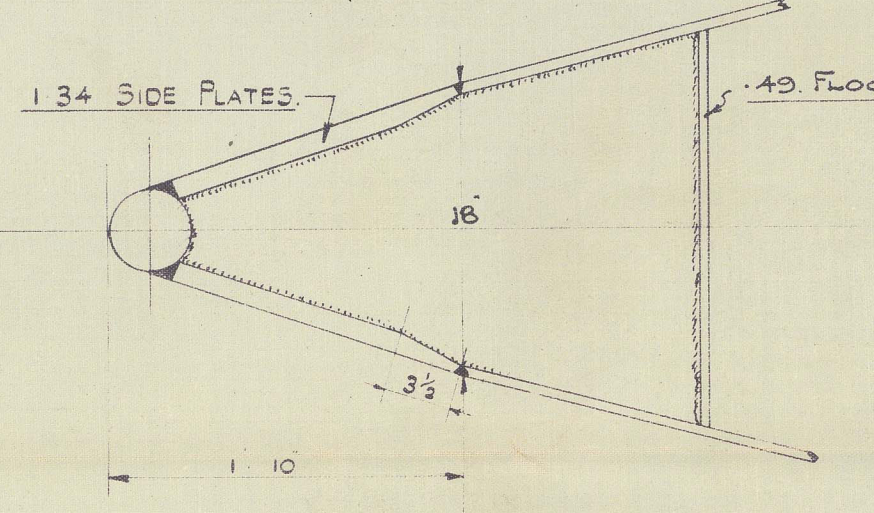
SECTION AT 15' 0" W.L.



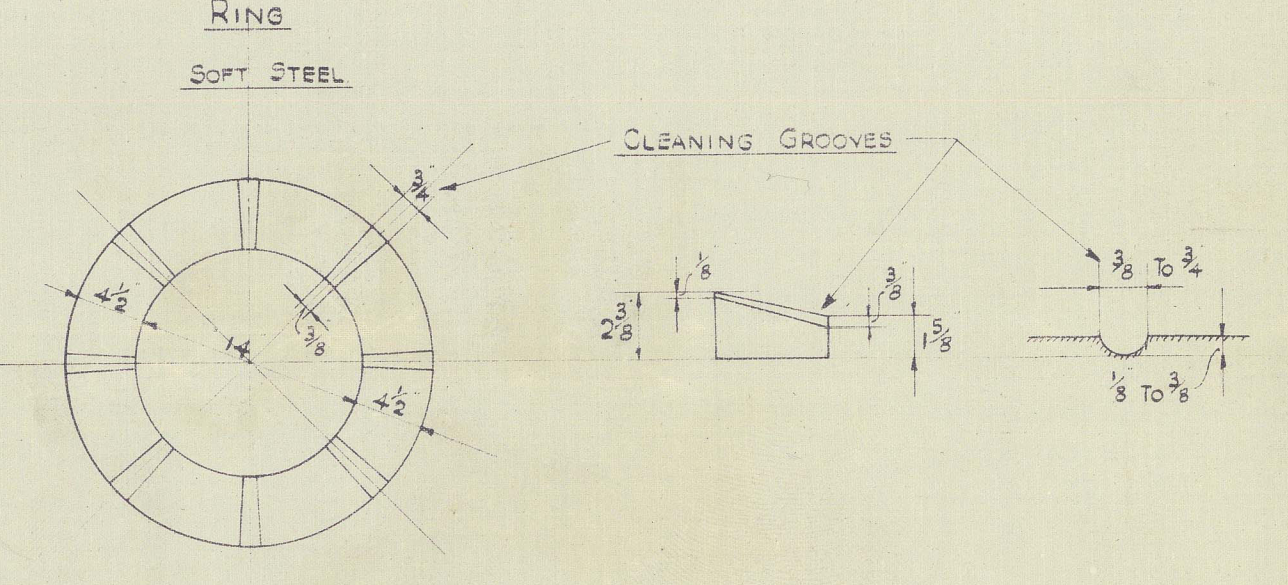
SECTION IN WAY OF BOSS



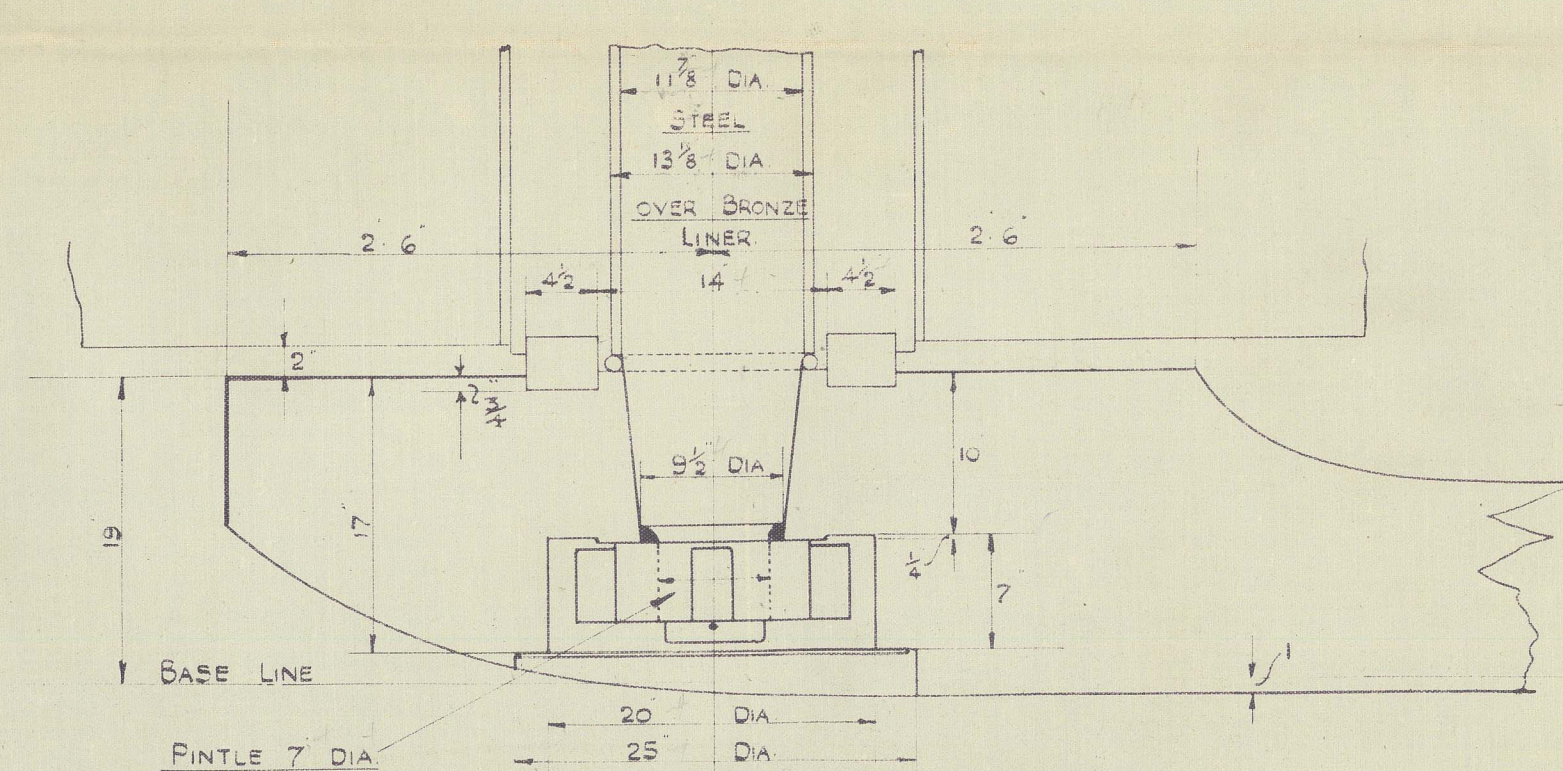
SECTION AT 6' 0" W.L.



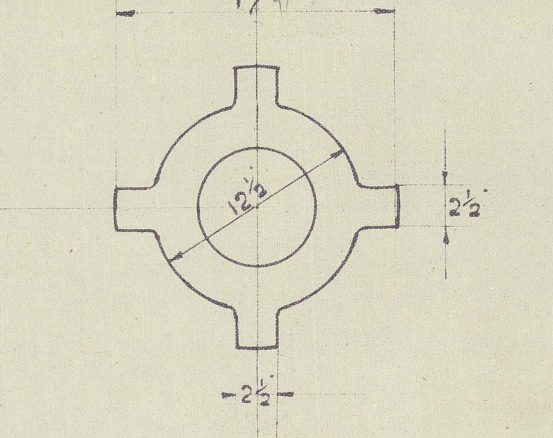
LOWER BEARING



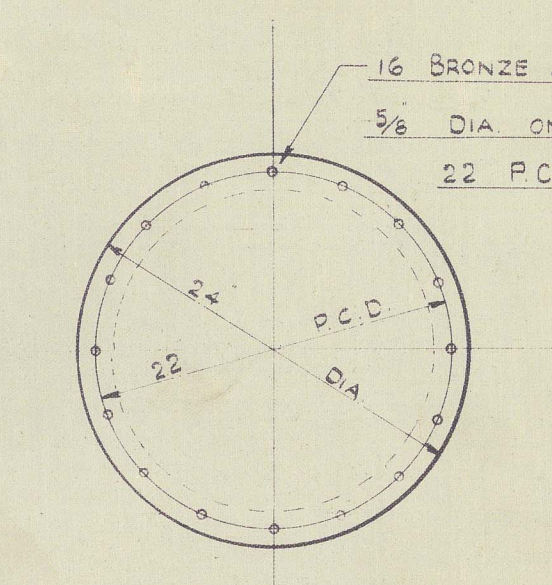
DETAIL OF BOTTOM GUIDON



DETAIL OF LOCKING NUT



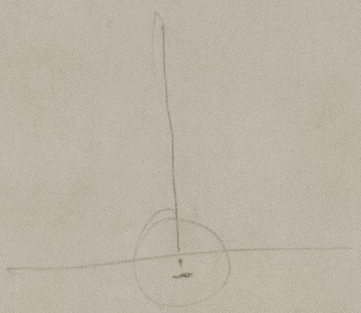
DETAIL OF CLOSING PLATE



JOSEPH I. THOMPSON & SONS LIMITED  
LONDON  
DATE 16.6.52

011757-011785-0200

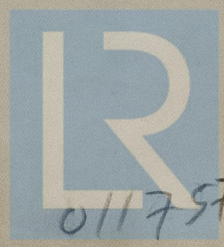
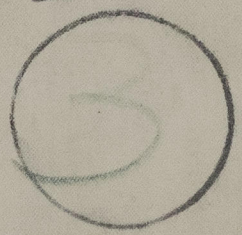




Thompson's No. 677  
Steel frame

SUNDERLAND RPT. NO. 36141  
Sheaf Royal

RECORDS DEPT.  
LONDON



© 2020

Lloyd's Register  
Foundation

011757 011765-0200