

## Lloyd's Register of Shipping.

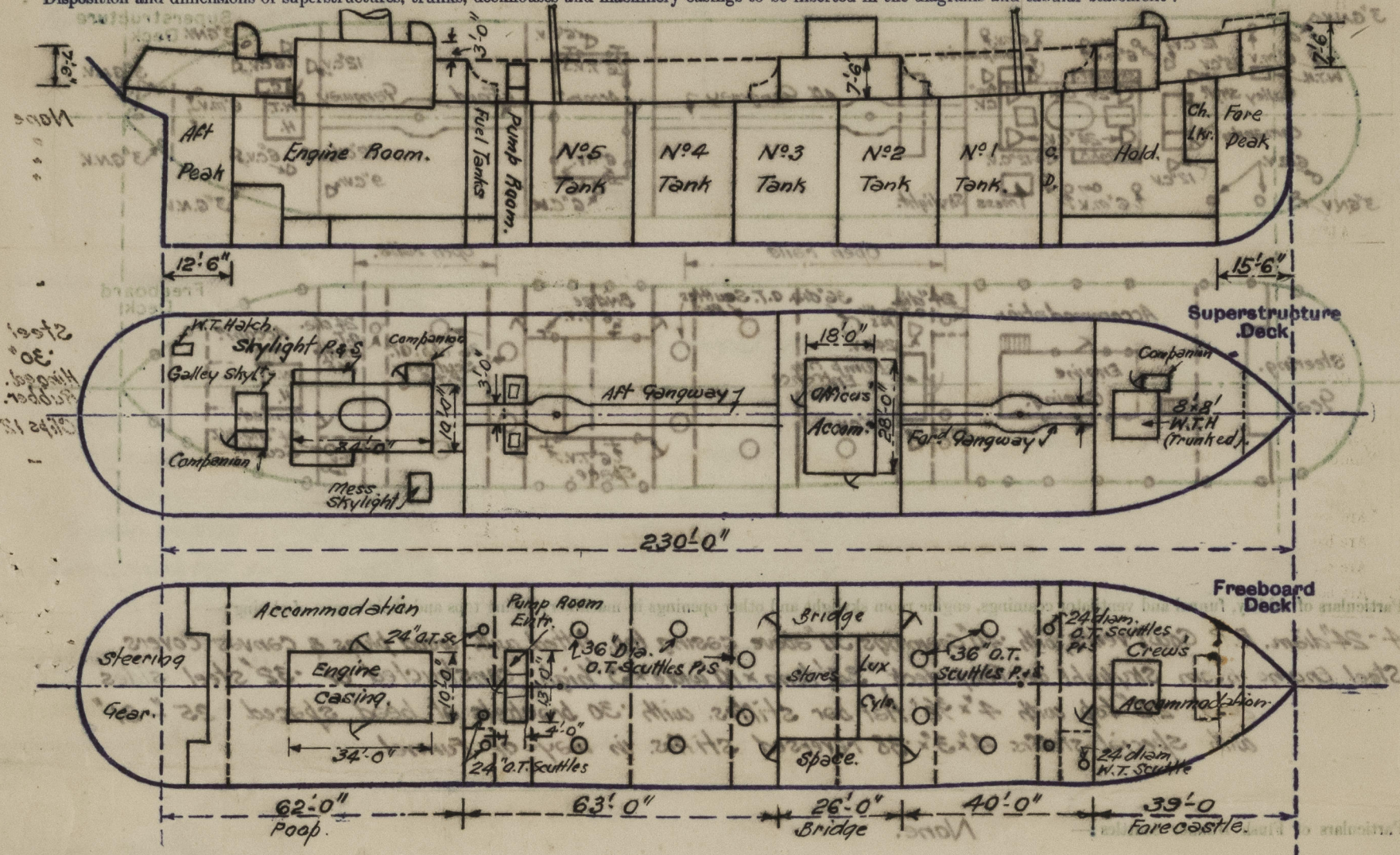
## SURVEYS FOR FREEBOARD.

(CONDITIONS OF ASSIGNMENT.)

Ship's Name *M. V. "Petroline" IMPERIAL*  
 Official Number *406811*  
 Nationality and Port of Registry *Canadian - Toronto*

Port of Survey *Montreal*  
 Surveyor's Signature *A. Nislop*  
 Date of Survey *13<sup>th</sup> October 1938*

Disposition and dimensions of superstructures, trunks, deckhouses and machinery casings to be inserted in the diagrams and tabular statement:—



Particulars of Superstructures, Trunks, Casings, Deckhouses.

	Coaming	Plating	Stiffeners	Spacing	End Attachments of Stiffeners	Size of Openings	Height of Sills	Height of Casings
Poop Bulkhead ...	33"	Vertical 33"	Flat Bar 7" x 3/8"	27"-30"	Welded to Decks.	None.	—	7'-6"
Raised Quarter Deck Bulkhead ...	—	—	—	—	—	—	—	—
Bridge, After Bulkhead ...	25"	Vertical 25"	Flat Bar 4" x 5/16"	25 1/2"	Welded to Decks.	2-60"x42"	24"	7'-6"
Bridge, Forward Bulkhead ...	33"	Vertical 33"	7" x 3/8" B.A.	28"	Welded to Decks.	2-60"x42"	24"	7'-6"
Fore-castle Bulkhead ...	25"	Vertical 25"	Flat Bar 4" x 5/16"	30"	Welded to Decks.	1-60"x27"	24"	7'-6"
Trunk, Aft ...	—	—	—	—	—	—	—	—
Trunk, Forward ...	—	—	—	—	—	—	—	—
Exposed Machinery Casings on Free-board or Raised Quarter Decks ...	Fore end 36" Sides 36"	Vertical 36"	7" x 3/8" B.A. 4" x 5/8" Flat Bar.	30" 24"-30"	Welded head and heel	1-60"x27"	24"	7'-6"
Exposed Machinery Casings on Super-structure Decks ...	33"	Vertical 33"	Flat Bar 4" x 3/8"	25"-36"	30 brackets at Head.	None	—	3'-0"
Machinery Casings within Superstructures not fitted with Class I Closing Appliances ...	—	—	—	—	—	—	—	—
Deckhouses on Flush Deck Ships ...	—	—	—	—	—	—	—	—

Particulars of Closing Appliances (state if capable of being manipulated from both sides).

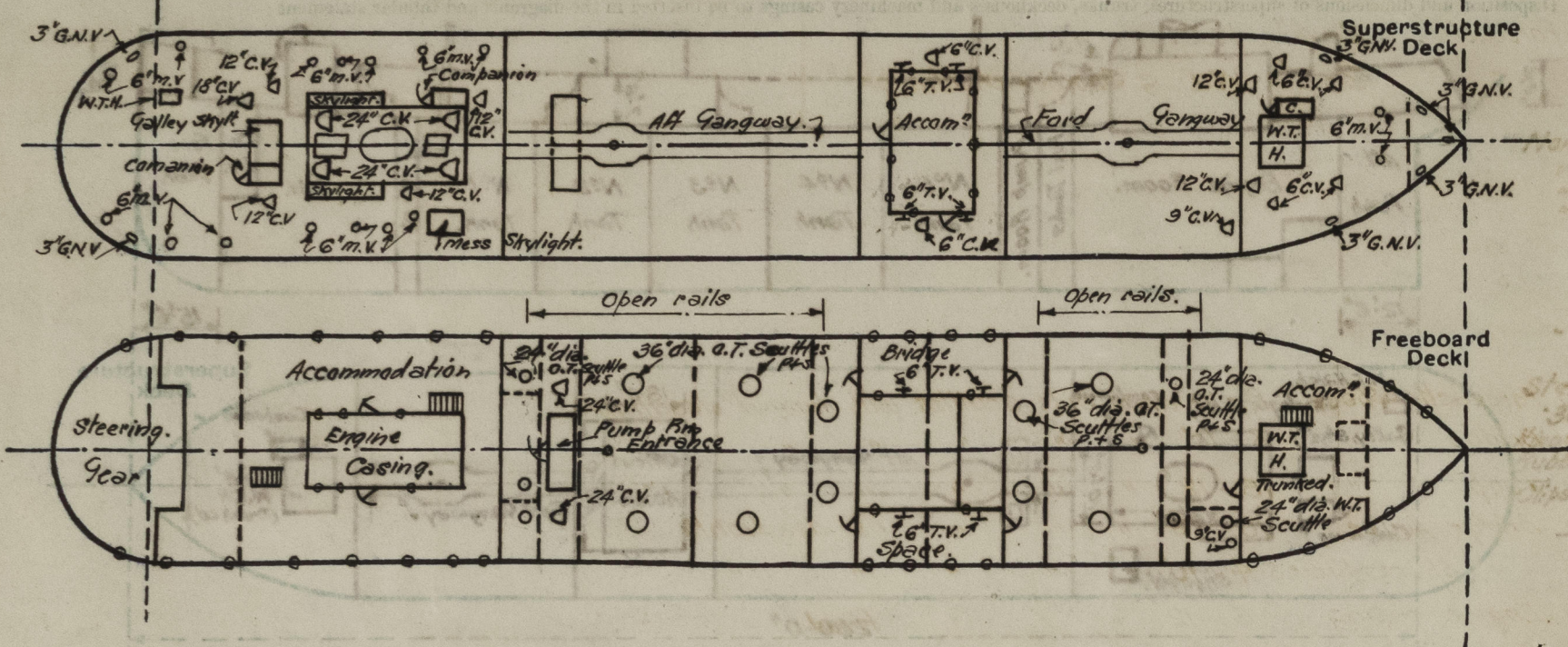
Poop Bulkhead ...	No openings.
Raised Quarter Deck Bulkhead ...	—
Bridge, After Bulkhead ...	2-60"x42" Hinged Steel W.T. Doors, operated from both sides.
Bridge, Forward Bulkhead ...	2-60"x42" Hinged steel W.T. Doors, operated from both sides.
Fore-castle Bulkhead ...	1-60"x27" Hinged steel W.T. Door, operated from both sides.
Exposed Machinery Casings on Free-board or Raised Quarter Decks ...	1-60"x27" Hinged steel W.T. Door, operated from both sides. (To Pump Room)
Exposed Machinery Casings on Super-structure Decks ...	No openings.
Machinery Casings within Superstructures not fitted with Class I Closing Appliances ...	—
Deckhouses on Flush Deck Ships ...	—



### PARTICULARS OF PROTECTION TO OPENINGS, ETC.

which would affect the seaworthiness of the ship :-

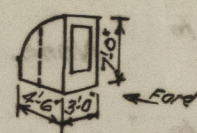
The diagram is a hand-drawn plan of a ship's deck. At the top, a dashed line represents the ship's profile with labels: 'Accom?' on the left, 'Aft Gangway?' in the center, '1st Fore' on the right, and 'Gangway' on the far right. Below this line, the deck layout is shown with several rectangular compartments. From left to right, these are: 'Aft Peak.' (a small triangle), 'Engine Room.' (a large rectangle), 'Fuel Tanks' (two small rectangles), 'Pump Room' (a small rectangle), a series of five 'Tank' compartments labeled 'N°5', 'N°4', 'N°3', 'N°2', and 'N°1' from left to right, a 'Hold.' (a large rectangle), and 'Fore Peak.' (a small triangle). Above the 'N°5' tank is a 'Bridge Space' rectangle. To the right of the 'N°1' tank is a 'Garboard Dam.' rectangle. Below the 'Hold.' is a rectangle labeled 'N.B.'. On the far right, above the 'Fore Peak.', is a small rectangle labeled 'Or. Lin.' and another labeled 'Accom.'. A vertical dashed line separates the 'N°1' tank from the 'Hold.' and 'Garboard Dam.' areas.



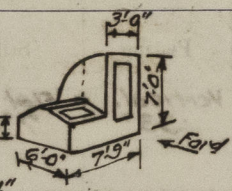
4-24" diam. E. P. Coal vents, with 40 Coalmings 30" above casing top, fitted with wood plugs & canvas covers. ✓  
Steel Engine Room Skylight on Poop deck, 34' long x 10' wide x 3' high, constructed of 32" steel sides and 26" top with 4" x 3/8" flat bar stiffens. with 30 brackets at head spaced 25"-31" with special stiffers 4 1/2 3" x 3/8 reversed stiffers in way of funnel.

Name \_\_\_\_\_

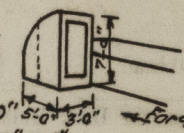
On Forecastle Deck:-  
36" Plating, with  
3" x 5/16" stiffers, sp. 27"  
Hinged W.T.D. 60" x 24"  
18" coaming. ✓



25 Plotting with 1-38  
3"x56" strikers. Sp. 24"  
1-Hinged W.T.D. 60"x24"  
18" Coaming. ✓



On Ramp Deck  
 25" Plating with  
 3" x 5/8" Stiffeners sp. 30"  
 1-Hinged W.T.D. 60" x 24"  
 18" Coaming ✓



On Paop Deck:-  
1-18" dia. Coult vent, coaming 30"x40" ✓  
4-12" " " " 30"x37.5"  
14-6" Mushroom Vents, coaming,  
12"x37.5" with screw down  
weather tight cover.

2-6" dia. Cowl vents, coaming 36" x 28" ✓  
4-6" Torpedo vents. in casing. ✓

2-12" dia. Cow vents, Coaming 36" x 37.5" ✓  
4-6" " " " " 36" x 28" ✓  
2-3" Goose neck vents, coaming 16" x 50" ✓  
Fitted with hinged W.T. Flaps.  
2-6" dia mushroom vents, coaming 30" x 30" ✓  
with screw down weather tight cap

1-9" diam. Cowl vent, coaming 10'-6" x 342"  
adequately stayed at Fore'sle Dk.  
2-24" diam. Cowl Vents, coaming 8'-0" x 40"  
4-6" Torpedo Vents, in casing to stores.

All cow ventilators fitted with wood plugs and canvas covers.

On Poop Deck, 2-3' Goose-neck air pipes, with hinged weather tight flaps, coaming 16"-50" with hinged W.T. Flap.  
" Fiddle " 3-3' " " " " " " " " " "

## Particulars of Gangway Cargo and Coaling Ports:

Name

Peep :-	2-4"	W.C. Discharge
"	3-2"	W.B. & Shower discharge
Bridge :-	1-4"	W.C. Discharge
"	1-2"	W.B. "
Forecastle :-	2-4"	W.C. "
"	2-2"	W.B. & Shower discharge

All fitted with combined automatic and positive action valves, controlled from above freeboard deck. ✓

To Forecastle Space							
" Bridge	"	8-10"	"	"	"	"	✓
" Poop	"	15-12"	"	"	"	"	✓
" Bridge House		10-15"	"	"	"	no deadlights.	✓
" " Space Stores	4-10"	"	"	"	"	"	✓
" Engine casing	6-12"	"	"	"	"	fixed.	✓
" Companionways on Poop & Fore'sle		-10"	"	"	"	"	✓

Vertical distance of Sill of lowest Side Scuttle above top of keel

[illegible]


Substantial gangway of steel construction fitted between Poop, Bridge and Forecastle Decks on Centre Line of ship. Height above freeboard deck 7'-6" and width 3'-0". Tread 5" x  $1\frac{3}{4}$ " Y.P. laid fore and aft with 1" spaces.

Particulars of Freeing Arrangements.						
	Length of Bulwark	Height of Bulwark	Size of Freeing Ports	Number each side	Area each side	Rule area each side
After Well ... ..	None					
Forward Well ... ..	None					

State position of each freeing port ... .. { After Well :— —  
(F. and A. position and height above deck edge) { Forward Well :— —

State whether the freeing ports are fitted with shutters, bars, or rails, and give particulars of such :— —

Additional area where sheer is less than standard. —



© 2020  
Lloyd's Register  
Foundation



# IMPERIAL GÖDERICH

## PARTICULARS OF PROTECTION TO OPENINGS, ETC.

HATCHWAYS ON FREEBOARD AND SUPERSTRUCTURE DECKS.									
On Freeboard Deck					On Superstructure Deck.				
Description of Hatchway	1-W.T. <i>For 2 Pump Rm</i>	2-O.T. <i>For 2 Coffdam</i>	3-O.T. <i>Bunkers</i>	10-O.T. <i>Main Tanks</i>				1-W.T. <i>Hold.</i>	1-W.T. <i>St? Gear.</i>
Dimensions of Hatchway	24"d.	24"d.	24"d.	36"d.				8'-0"x8'-0"	3'-2 1/2"x2'-0"
COAMINGS	Height above Deck	2'-0"	2'-0"	2'-0"	2'-6"			2'-6"	2'-0"
	Thickness	40"	40"	40"	40"			40"	30"
	Stiffeners	None	None	None	None			5"x3/8"	None
	Brackets, Stays	"	"	"	"			3/8"	"
HATCH BEAMS	Number	None	None	None	None			None	None
	Spacing	"	"	"	"			"	"
	Scantling and Sketch	"	"	"	"			"	"
	Bearing Surface	No ullage plate or valve.	No ullage plate.	10" ullage plate and valve.	10" diam. ullage plate & valve.			"	"
FORE AND AFTERS	Number	None	None	None	None			2	None
	Spacing	"	"	"	"			30"	"
	Unsupported Lengths	"	"	"	"			"	"
	Scantling* and Sketch	"	"	"	"			1 3/8"	"
	Bearing Surface	"	"	"	"			5'x3'x3/8"	"
HATCH COVERS	Material	Steel	Steel	Steel	Steel			Steel	Steel
	Thickness	50"	50"	50"	50"			38"	30"
	How fitted	Hinged	Hinged	Hinged	Hinged			Hinged	Hinged
	Bearing Surface	Rubber	Flex	Flex	Flex			Rubber	Rubber.
Spacing of Cleats	Clips 20"	Clips 20"	Clips 20"	Clips 20"				Clips 19"	Clips 12"
Number of Tarpaulins	-	-	-	-				-	-

\*Are wood fore and afters steel shod at all bearing surfaces? None

Are battens and wedges efficient and in good condition? "

Are tarpaulins in good condition and in accordance with rule requirements? None

Are lashings provided in accordance with rule requirements? "

*Note: - Relief valves in O.T. Hatches set to 4 lbs/sq.in.*

Particulars of any special features:—

Vessel completely welded.

Longitudinally framed in way of tanks, transversally framed fore and aft.

Hydrostatic Information

Draught	External Disp. (SW)	Tons/inch
17'	3190	18.15
16'	2940	17.80
15'	2695	17.55
14'	2460	17.25

Endorsement at first survey and at surveys for renewal of Certificate:—

The fittings and appliances are in accordance with the particulars shown on this form (or as now modified) and are in good condition.

