

16 JUN 1958

Lloyd's Register of Shipping.

Index No. _____
(For London Office only.)SURVEYS FOR FREEBOARD.
(CONDITIONS OF ASSIGNMENT.)

Ship's Name "JOSELIN"

Port of Survey Bilbao

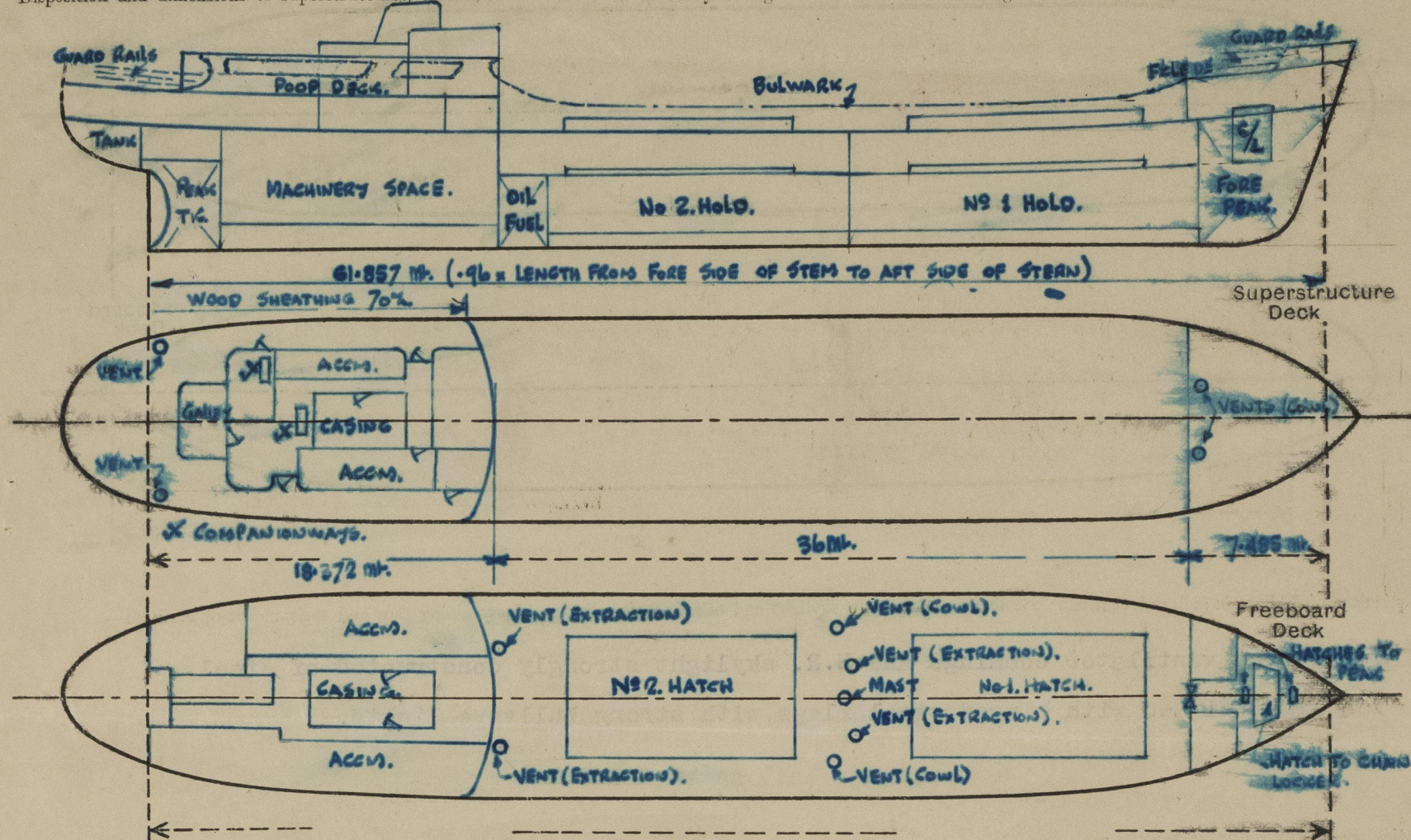
Official Number -

Surveyor's Signature *W.S. Dupin*

Nationality and Port of Registry Spanish - Santander

Date of Survey During construction.

Disposition and dimensions of superstructures, trunks, deckhouses and machinery casings to be inserted in the diagrams and tabular statement:—



Particulars of Superstructures, Trunks, Casings, Deckhouses.

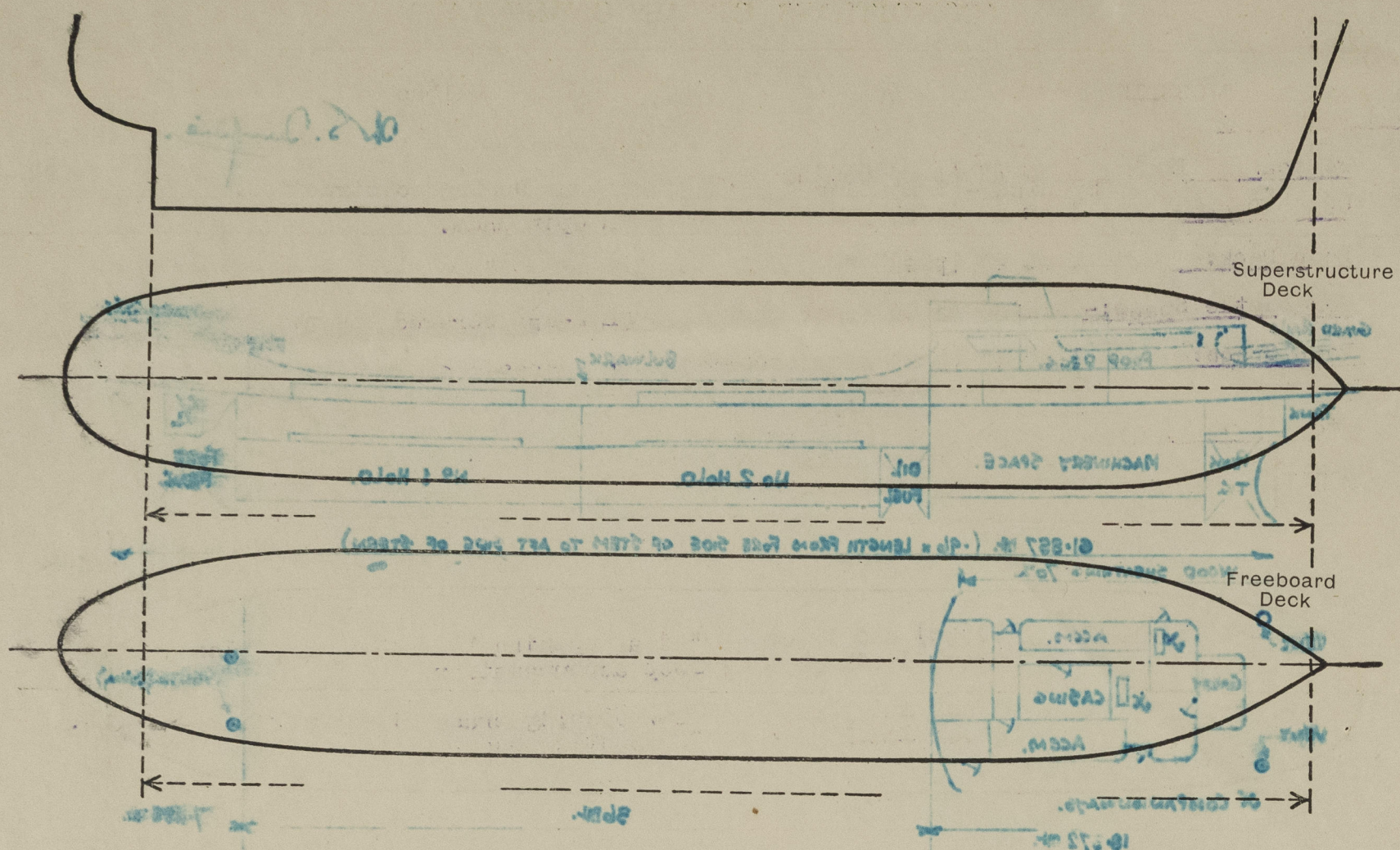
	Coaming	Plating mm.	Stiffeners	Spacing	End Attachments of Stiffeners	Size of Openings	Height of Sills	Height of Casings
Poop Bulkhead	-	8	150x75x9 & 150x90x10	760-840mm	Welded	-	-	2.1 mt.
Raised Quarter Deck Bulkhead	-	-	-	-	-	-	-	-
Bridge, After Bulkhead	-	-	-	-	-	-	-	-
Bridge, Forward Bulkhead	-	-	-	-	-	-	-	-
Forecastle Bulkhead	-	6	65x65x7 & 70x70x8	700-750mm	Welded	1500x1200mm	350mm	2.0 mt.
Trunk, Aft	-	-	-	-	-	-	-	-
Trunk, Forward	-	-	-	-	-	-	-	-
Exposed Machinery Casings on Freeboard or Raised Quarter Decks	-	-	-	-	-	-	-	-
Exposed Machinery Casings on Superstructure Decks (Boat Deck)	-	7	75x8mm flats	600 mm	Top brackets bottom welded	-	-	1.0 mt.
Machinery Casings within Superstructure not fitted with Class I Closing Appliances	-	7	75x8mm flats	600 mm	Welded	1640x520mm	250mm	2.1 mt.
Deckhouses on Flush Deck Ships	-	-	-	-	-	-	-	-

Particulars of Closing Appliances (state if capable of being manipulated from both sides).

Poop Bulkhead	No openings
Raised Quarter Deck Bulkhead	-
Bridge, After Bulkhead	-
Bridge, Forward Bulkhead	-
Forecastle Bulkhead	3" stormboards in full height welded channels.
Exposed Machinery Casings on Freeboard or Raised Quarter Decks	-
Exposed Machinery Casings on Superstructure Decks (Boat Deck)	No openings
Machinery Casings within Superstructure not fitted with Class I Closing Appliances	Hinged steel door operated from both sides.
Deckhouses on Flush Deck Ships	-

PARTICULARS OF PROTECTION TO OPENINGS, ETC.

The following diagrams should be used to indicate the positions of cargo and coaling hatchways, gangway, cargo and coaling ports, ventilators, companionways, etc., which would affect the seaworthiness of the ship :-



Particulars of filley, funnel and ventilator coamings, engine room skylight and other openings, in machinery casing tops and their means of closing :-

Funnel and ventilator coamings and E.R. skylight strongly constructed of steel.
Skylight fitted with hinged steel flaps with strong bullseye lights.

Particulars of Flush Bunker Scuttles :-

None.

Particulars of Companionways :-

Companionways enclosed in strong steel deckhouse on Poop Deck.
4-2" hinged wood doors operated both sides. 1460 x 650 mm. Sills 457 mm.

Particulars of Ventilators in exposed positions on freeboard and superstructure decks :-

Forecastle Deck:-

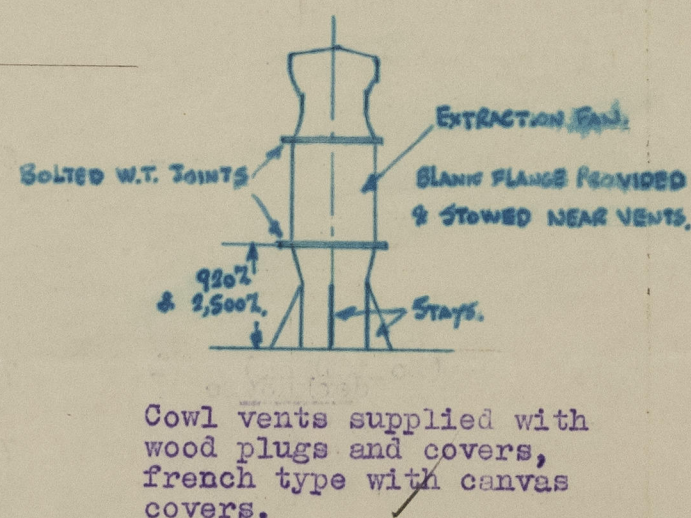
2 at 560 mm. dia. x 10 mm. - 915 mm. high (Cowl).

Upper Deck:-

2 at 560 mm. dia. x 10 mm. - 2500 mm. high. Stayed to mast (Extraction fans).
2 at 560 mm. dia. x 10 mm. - 1800 mm. high. Efficiently stayed (Cowl vents).
2 at 560 mm. dia. x 10 mm. - 920 mm. high. Stayed to Poop Front (Extraction fans).

Poop Deck:-

2 at 250 x 1802 x 8 mm. - 760 mm. high. (French type).



Cowl vents supplied with wood plugs and covers, french type with canvas covers.

Particulars of Air Pipes in exposed positions on freeboard, raised quarter, or superstructure decks :-

Forecastle Deck:-

1 at 3" dia. x 490 mm. high.

Upper Deck:-

9 at 3" dia. c 915 mm. high.

Poop Deck:-

6 at 3" dia. x 457 mm. high.

3 at 2" dia. x 457 mm. high.

Oil fuel air pipes fitted with wire gauzes and hinged W.T. flaps.

Remaining pipes fitted with wood plugs and canvas covers.

Particulars of Gangway Cargo and Coaling Ports :-

None.

Particulars of Scuppers and Sanitary Discharge Pipes :-

DECK SCUPPERS:-

Forecastle Deck:- 1 at 2" (p&s) led to Upper Deck.

Upper Deck:- 4 at 2" (p&s) led overboard with open ends.

Poop Deck:- 2 at 2" (p&s) " " " "

Forecastle Space:- Drains on to Upper Deck through 2-1/2" screwed plugs. Plugs permanently attached.

Poop Space:- 1 at 4" (p&s) from accommodation spaces etc. led overboard below freeboard deck with brass S.D.N.R. valves at ships side with local controls (in Machinery space).

Stores etc. above After Peak:- 1/2" scuppers led to tunnel well fitted with self closing cocks at lower end.

Chain Locker:- Drained by hand pump.

Particulars of Side Scuttles :-

Above Freeboard Deck:- 11(ps) and 11(ss) 10" dia. opening brass side scuttles with cast steel deadlights to Poop accommodation.

3(ps) and 3(ss) 10" dia. opening brass side scuttles with cast steel deadlights to Forecastle space.

Vertical distance of Sill of lowest Side Scuttle above top of keel Non below Freeboard Deck.

Bulwarks and

Particulars of Guard Rails :-

Upper Deck:-

Bulwark 1000 mm. high x 7 mm. with 150x75x8 mm. BA. Rail Bar and 120x80x10 mm. angle stays spaced approx. 1.8 mt. apart.

Forecastle Deck:-

Part bulwark & part guard rails - Bulwark 1000 mm. high x 7 mm. with 150x75x8 mm. B.A. rail bar and 8 mm. plate stays spaced 2000 mm. apart. 3 guard rails with stanchions 1060 mm. high spaced 1360 mm. apart.

Poop Deck:-

Part bulwark & part guard rails - Details as for Upper & Forecastle Decks.

Particulars of Gangways, Lifelines, etc. :-

Wire lifelines fitted (p&s) on Upper Deck.

Particulars of Freeing Arrangements.

	Length of Bulwark	Height of Bulwark	Size of Freeing Ports	Number each side	Area each side	Rule area each side
After Well ...						
Forward Well ...	36.6 mt.	1,000 mm.	4800 mm. x 150 mm. 4200 mm. x 150 mm.	2 4	3.96 m ²	2.23 m ²

State position of each freeing port ... After Well :-

(F. and A. position and height above deck edge) Forward Well :- From Forecastle bulkhead to fore end of ports. - 0.6, 6.6, 12.0, 17.4, 16.8, 28.2 mt. Height above deck edge (100 mm).

State whether the freeing ports are fitted with shutters, bars, or rails, and give particulars of such :- None.

Additional area where sheer is less than standard.

PARTICULARS OF PROTECTION TO OPENINGS, ETC.

HATCHWAYS ON FREEBOARD AND SUPERSTRUCTURE DECKS.				
Description of Hatchway	No. 1	No. 2	Hatch to Chain Locker	
Dimensions of Hatchway	12.6 x 6 mt.	12 x 6 mt.	18 mt. x 3 to 2 mt.	
COAMINGS	Height above Deck ... 750 mm. Thickness { Sides ... 11 mm. { Ends ... 11 mm. Stiffeners ... See sketch Brackets, Stays ... 10 mm. 108. 1E 9S 1E.	Height above Deck ... 750 mm. Thickness { Sides ... 11 mm. { Ends ... 11 mm. Stiffeners ... See sketch Brackets, Stays ... 10 mm. 108. 1E 9S 1E.	Height above Deck ... 230 mm. Thickness { Sides ... 10 mm. { Ends ... 10 mm. Stiffeners ... - Brackets, Stays ... -	
HATCH BEAMS	Number ... 8 Spacing ... 1400 mm. Scantling and Sketch ... 250x13 mm. 250x14 mm. 11 mm. 450 mm. None 250x13 mm. 250x14 mm. Bearing Surface ... 100 mm. 100 mm.	Number ... 7 Spacing ... 1500 mm. Scantling and Sketch ... 250x14 mm. 11 mm. 450 mm. None 250x14 mm. 250x14 mm. Bearing Surface ... 100 mm. 100 mm.	Number ... 7 Spacing ... 1500 mm. Scantling and Sketch ... 250x14 mm. 11 mm. 450 mm. None 250x14 mm. 250x14 mm. Bearing Surface ... 100 mm. 100 mm.	Detail of Hatch Side Coamings
FORE AND AFTERS	Number ... Spacing ... Unsupported Lengths ... Scantling* and Sketch ... Bearing Surface ...	Number ... Spacing ... Unsupported Lengths ... Scantling* and Sketch ... Bearing Surface ...	Number ... Spacing ... Unsupported Lengths ... Scantling* and Sketch ... Bearing Surface ...	None
HATCH COVERS	Material ... Wood Thickness ... 60 mm. How fitted ... Fore & Aft. Bearing Surface ... 70 mm.	Material ... Wood Thickness ... 60 mm. How fitted ... Fore & Aft. Bearing Surface ... 70 mm.	Material ... Part Steel 7 mm. Thickness ... Part Wood 65 mm. How fitted ... Awaftships Bearing Surface ... 75 mm.	
Spacing of Cleats	585 mm.	540 mm.		
Number of Tarpaulins	2	1		
*Are wood fore and afters steel shod at all bearing surfaces? Yes Are battens and wedges efficient and in good condition? Yes Are tarpaulins in good condition and in accordance with rule requirements? Yes Are lashings provided in accordance with rule requirements? Yes - Locking bars.				

Particulars of any special features :-

Hatches to Fore Peak Tank in Forecastle Space:-

2 at 520 x 420 mm. - Sill 10 mm. x 220 mm. high. W.T. bolted steel cover 10 mm. thick. ✓

Upper Deck:-

Bulwark 1000 mm. high x 7 mm. with 150x75 mm. B.A. Ball Bar and 150x10 mm. angle stays spaced approx. 1.8 mt. apart.

Forecastle Deck:-

First bulwark 2 part guard rails - Bulwark 1000 mm. high x 7 mm. with 150x75 mm. B.A. Ball Bar and 8 mm. plate stays spaced 2000 mm. apart. 3 guard rails with 150x10 mm. high spaced 1300 mm. apart.

Lower Deck:-

First bulwark 2 part guard rails - Details as for Upper & Forecastle Deck.

Like lifelines fitted (pse) on Upper Deck.

Plan with ship



© 2020
Lloyd's Register
Foundation