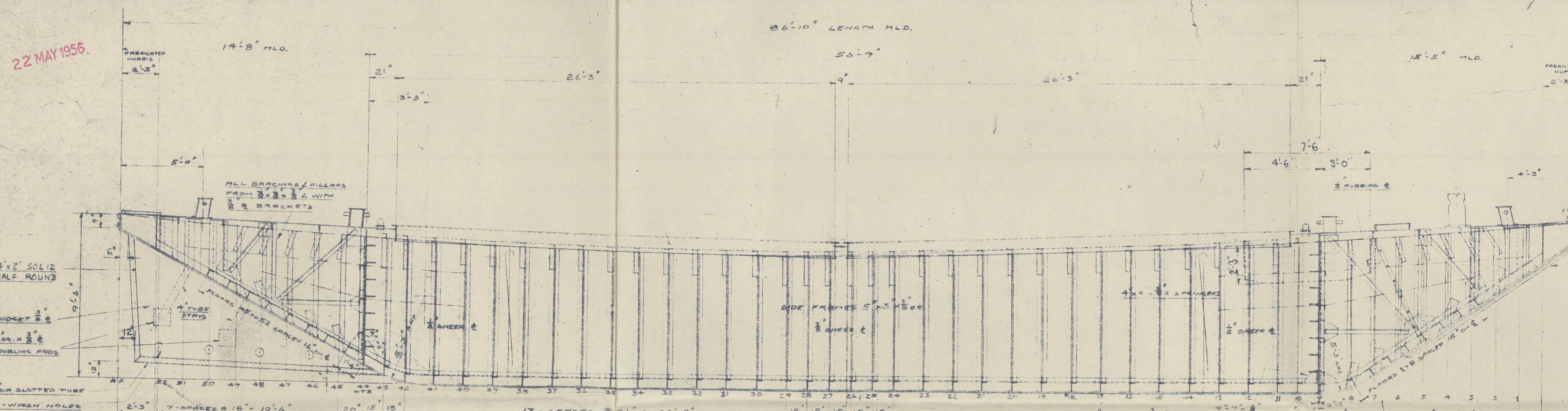
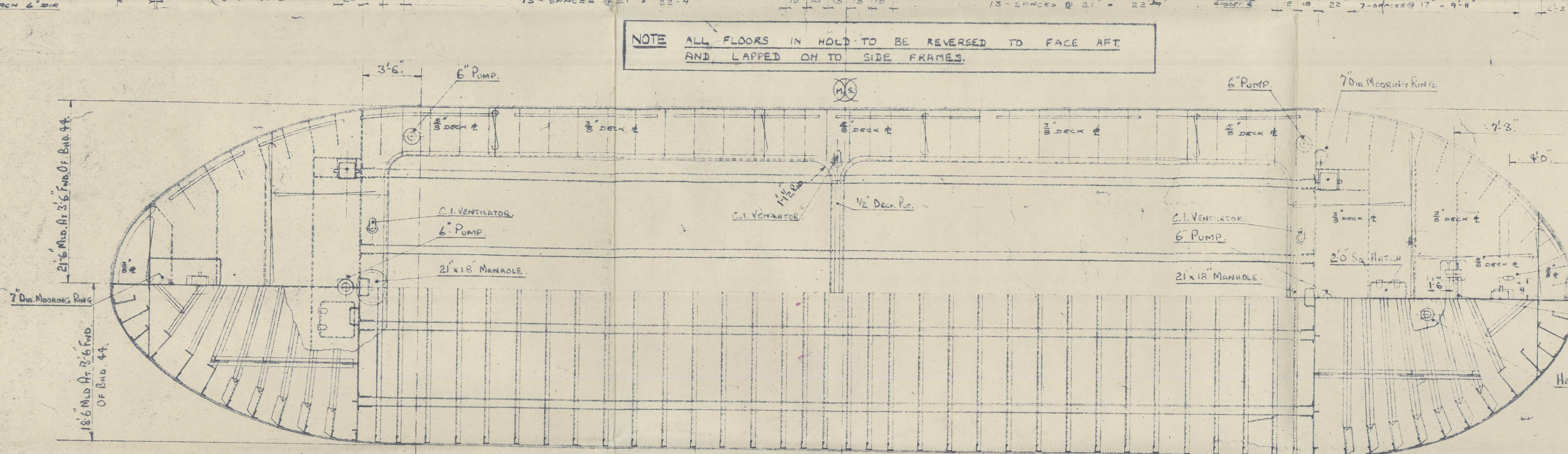


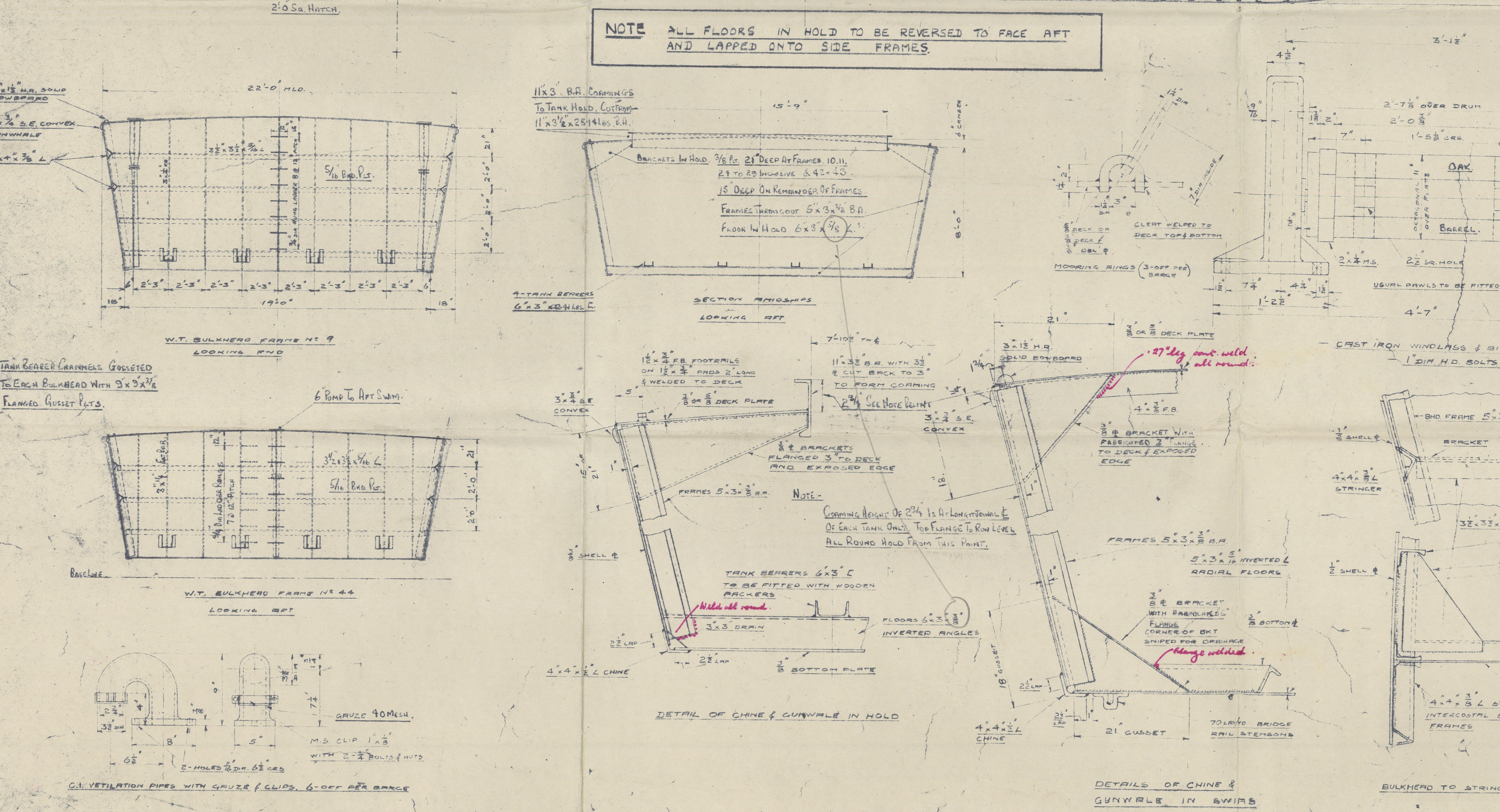
22 MAY 1956



NOTE ALL FLOORS IN HOLD TO BE REVERSED TO FACE AFT.
AND LAPPED ON TO SIDE FRAMES.



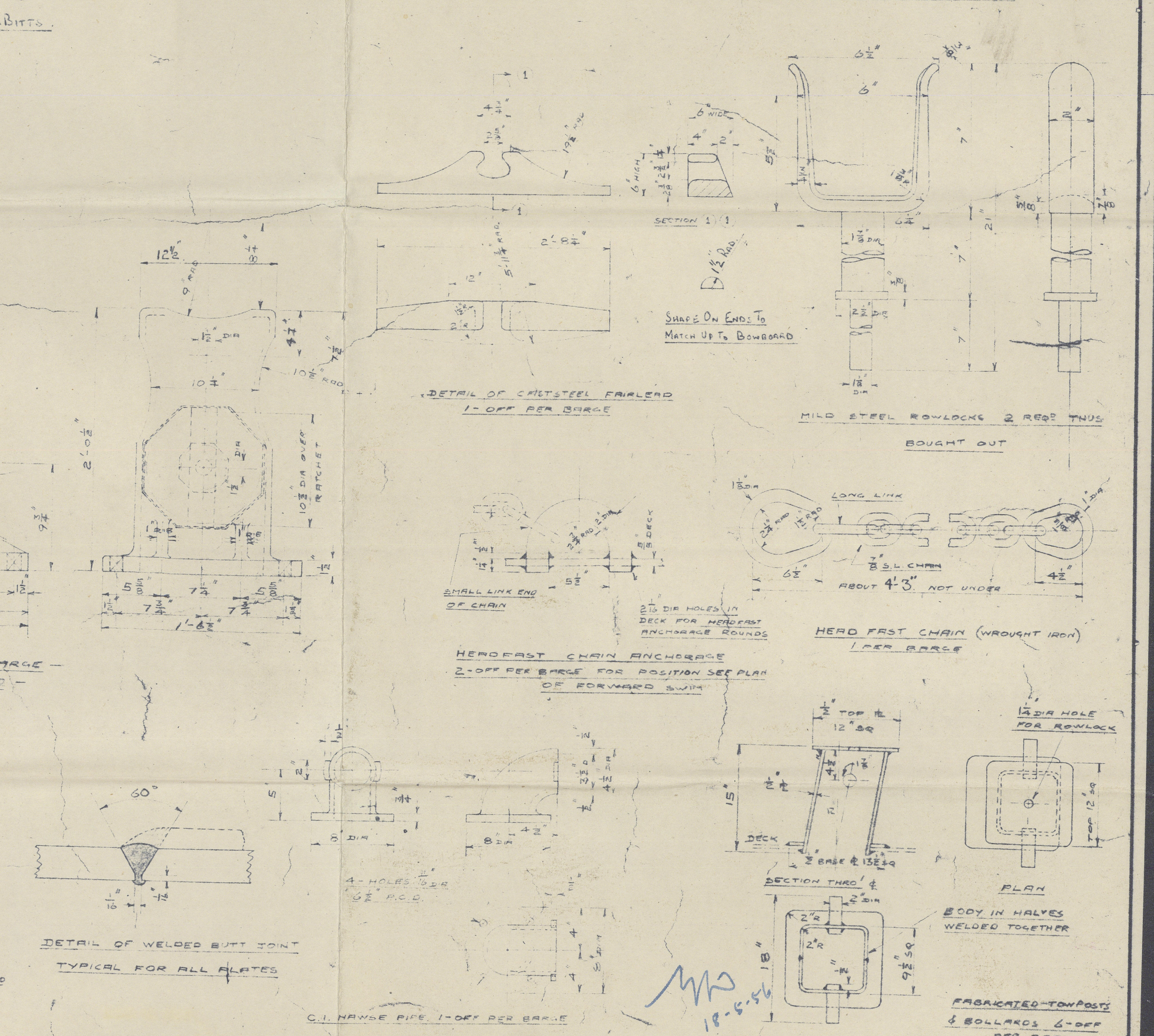
NOTE ALL FLOORS IN HOLD TO BE REVERSED TO FACE AFT AND LAPPED ONTO SIDE FRAMES.

[illegible][illegible]

BARGE & TANKS TO BE BUILT TO LLOYD'S & PLA REQUIREMENT & INSPECTION & EQUIPPED AS PETROLEUM SPIRIT BARGE.

PRINCIPAL DIMENSION	
LENGTH MLD	25' 0"
BEAM AT FORE DOWNHEAD	8' 2' 0"
BEAM AT 3/4 FORWARD OF AFT BULKHEAD	21' 6"
MLD DEPTH FWD SHIPS	8' 0"
FRAME HT SIDE	1' 6"

CLASS :- A.I. SWIMBARGE FOR SERVICE ON RIVER THAMES
CARRYING PETROLEUM IN PORTABLE TANKS.

[illegible]

CHARRINGTON, GARDNER & LOCKET (LONDON) LTD

DARTFORD

PETROLEUM BARGE "STONERACE" LONDON REP NO 135754
PTB 3275.

" " "STONERIG" LONDON REP NO 136489
PTB 3307

" " "STONECURE" LONDON REP NO 136869
PTB 3319

GENERAL ARRIST OF 150 TON PETROLEUM BARGE

PLAN NO 8346/58 B

Approved
22/5/56



© 2021

Lloyd's Register
Foundation

011725-011736-0005