

MIDSHIP SECTION.

LENGTH B.P. 305'0", BREADTH M.P. 42'0", DEPTH M.P. 25'7".

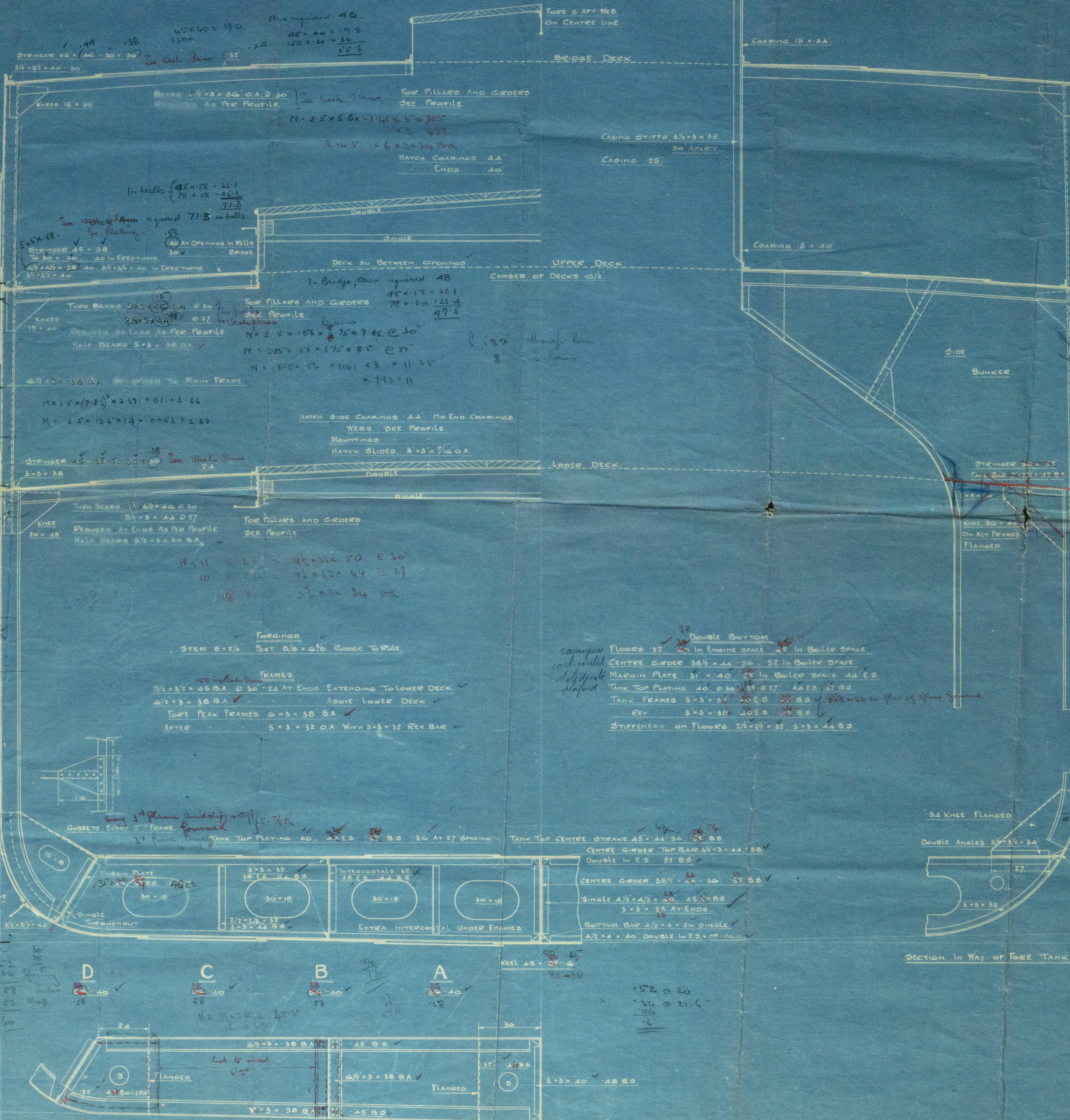
1/2 SCALE

To CLASS BRITISH CORPORATION B 3 *

EQUIPMENT

TWO BOWER ANCHORS	33 1/4 CWTs	EX. STEEL	STOCK LESS 12 CWTs
ONE SPARE	28 1/4		
ONE STREAM	13 1/4		
ONE KEDGE	5 1/4		
240 FATHOMS STUD CHAIN CABLE	1 1/2		
75 1 1/2" STREAM CHAIN OR WIRE	4		
105 TOWLINE 12" OR 4" WIRE			
HAWSEERS & WARPS			
TWO AT 90 FATHOMS	7 MARILLA		
TWO	6		

Approved
See Plan 8.10.19



Alternative
Lamina on
B. Span

11 x 31 x 54 in. B. Span
60 in B. Span

11 x 31 x 60
11 x 31 x 48

SECTION IN WAY OF FORE TANK ONLY

Harkness

232

Midship Section

Bag

101-

See plan
3Harkness & SonN^o 232Midship Section305 x 42 x 25' 7"

© 2021

8 10 19

Lloyd's Register
Foundation

SS. PEDROSA