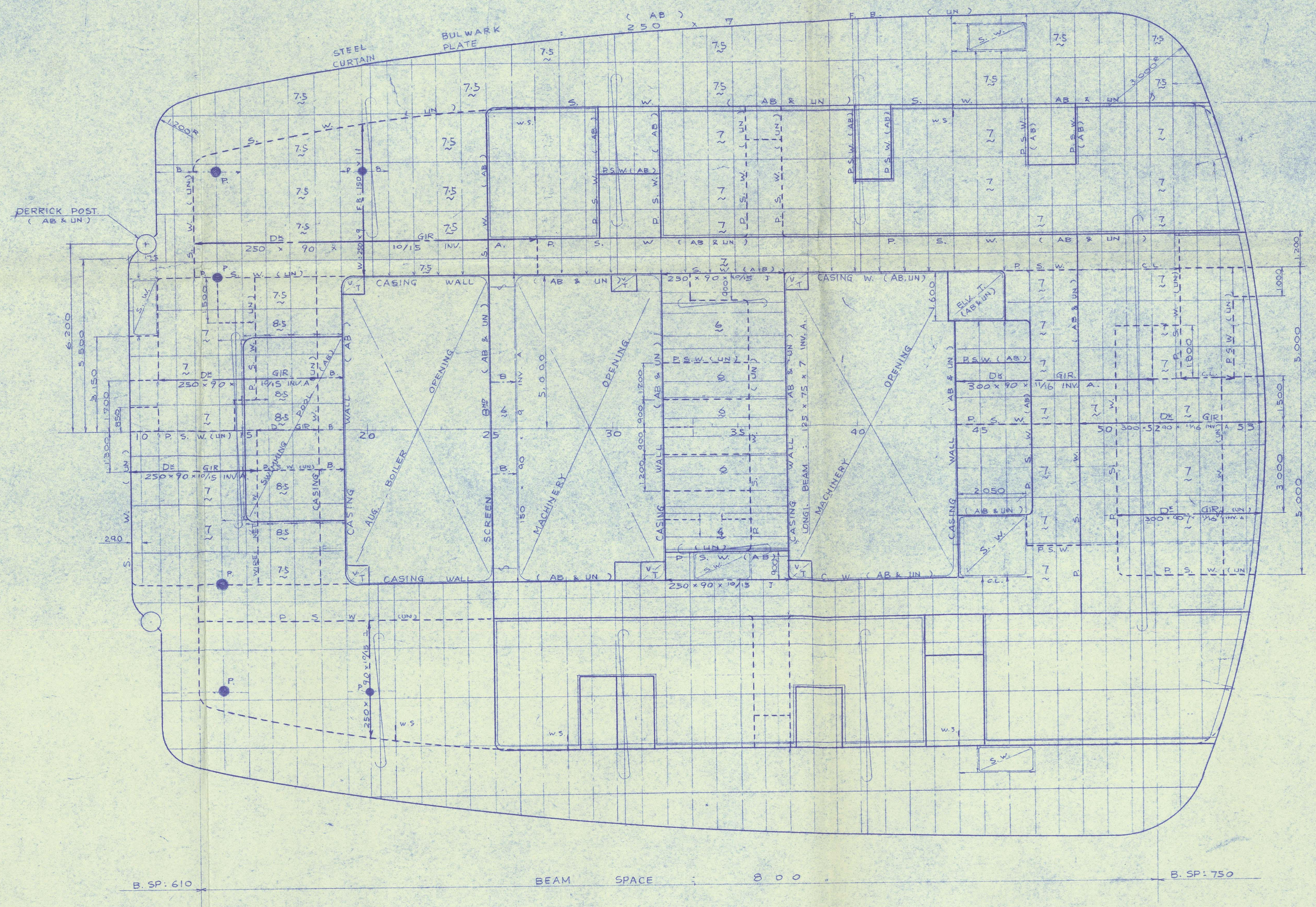
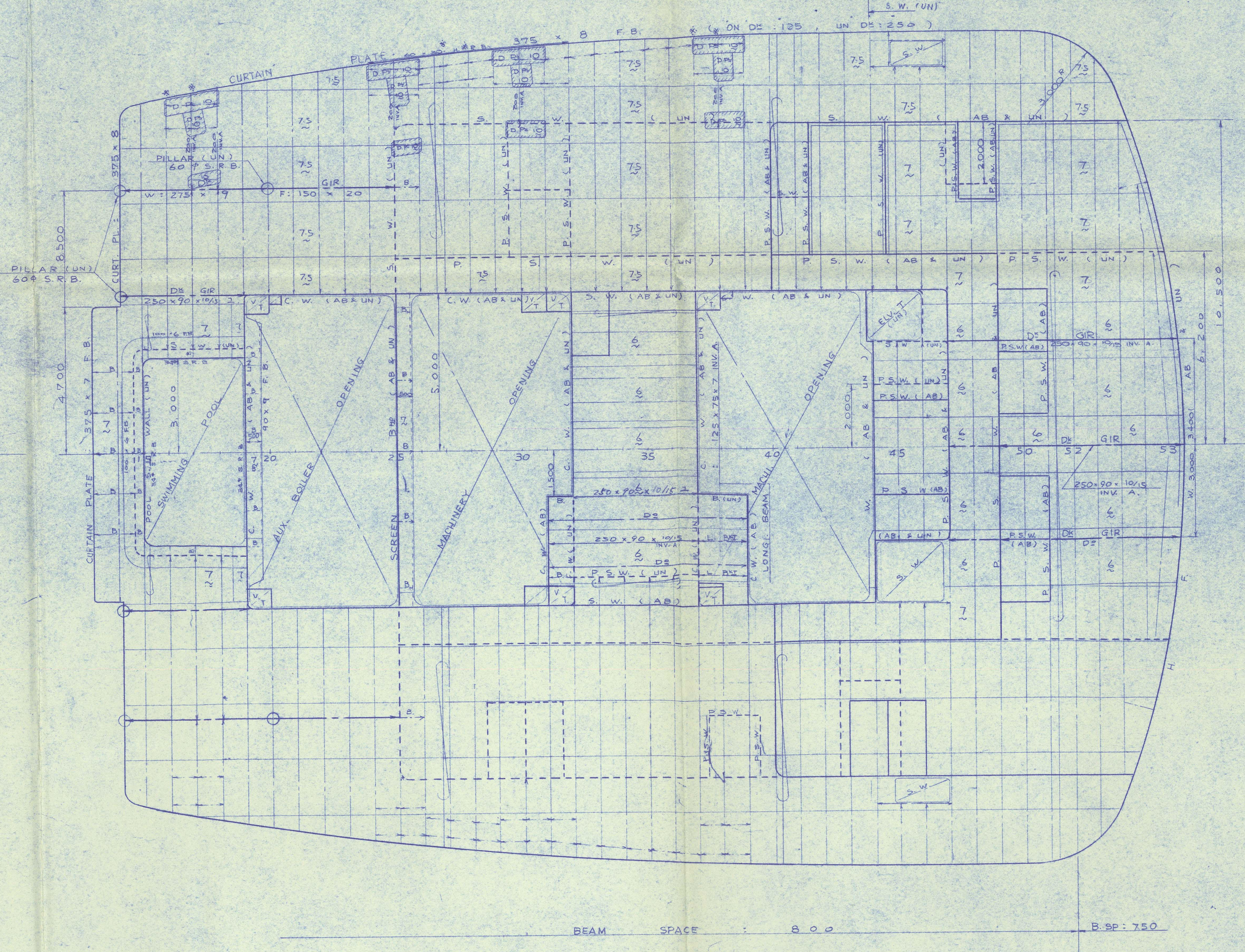


PLAN RECORD
DRAWN FOR HIS IN ACCORDANCE
WITH HARK LUGAN'S FINISHED
PLAN AND ISSUED ON JUNE 8 1942

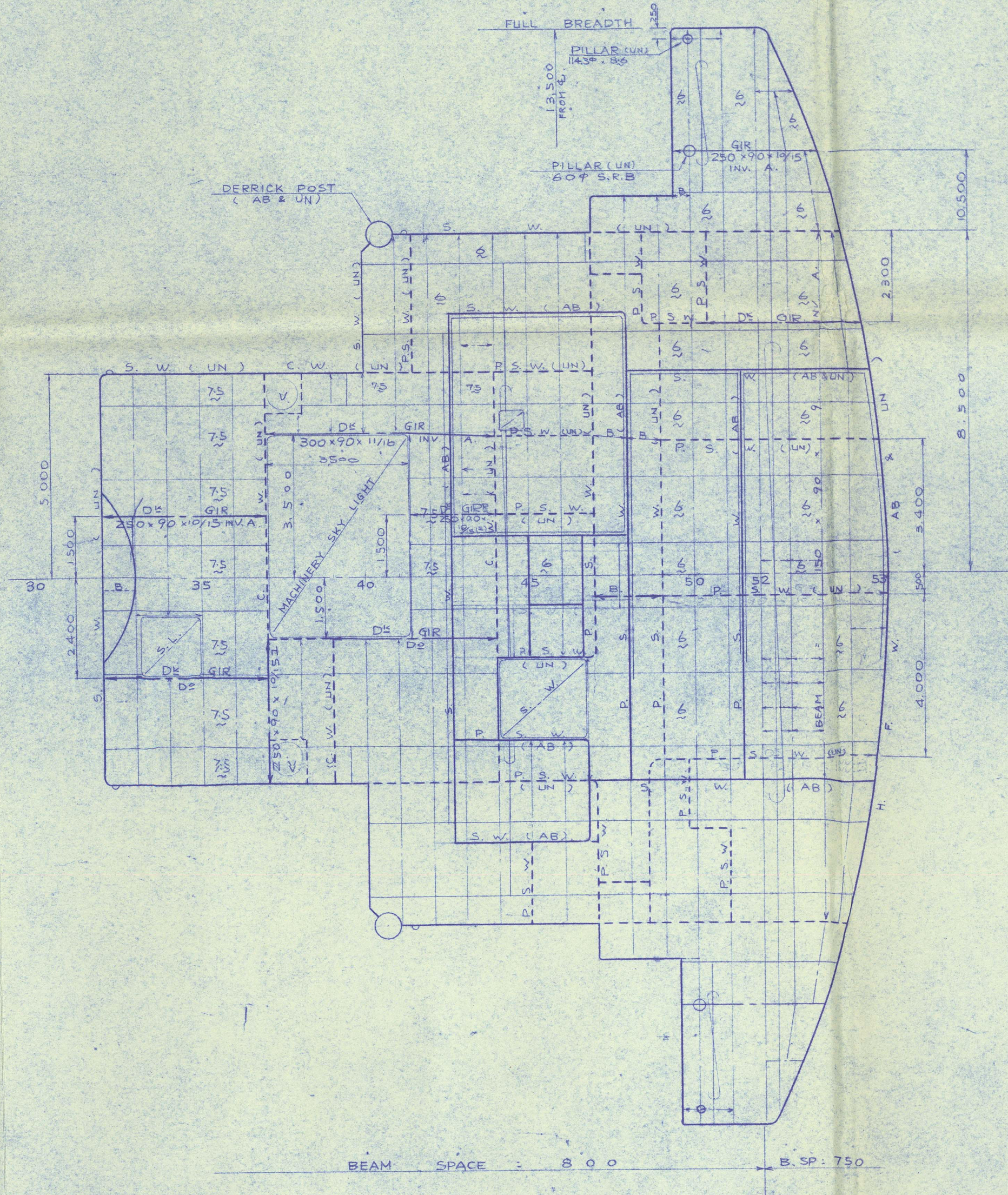
PROMENADE DECK
BEAM : 150 x 40 x 9 INV. A



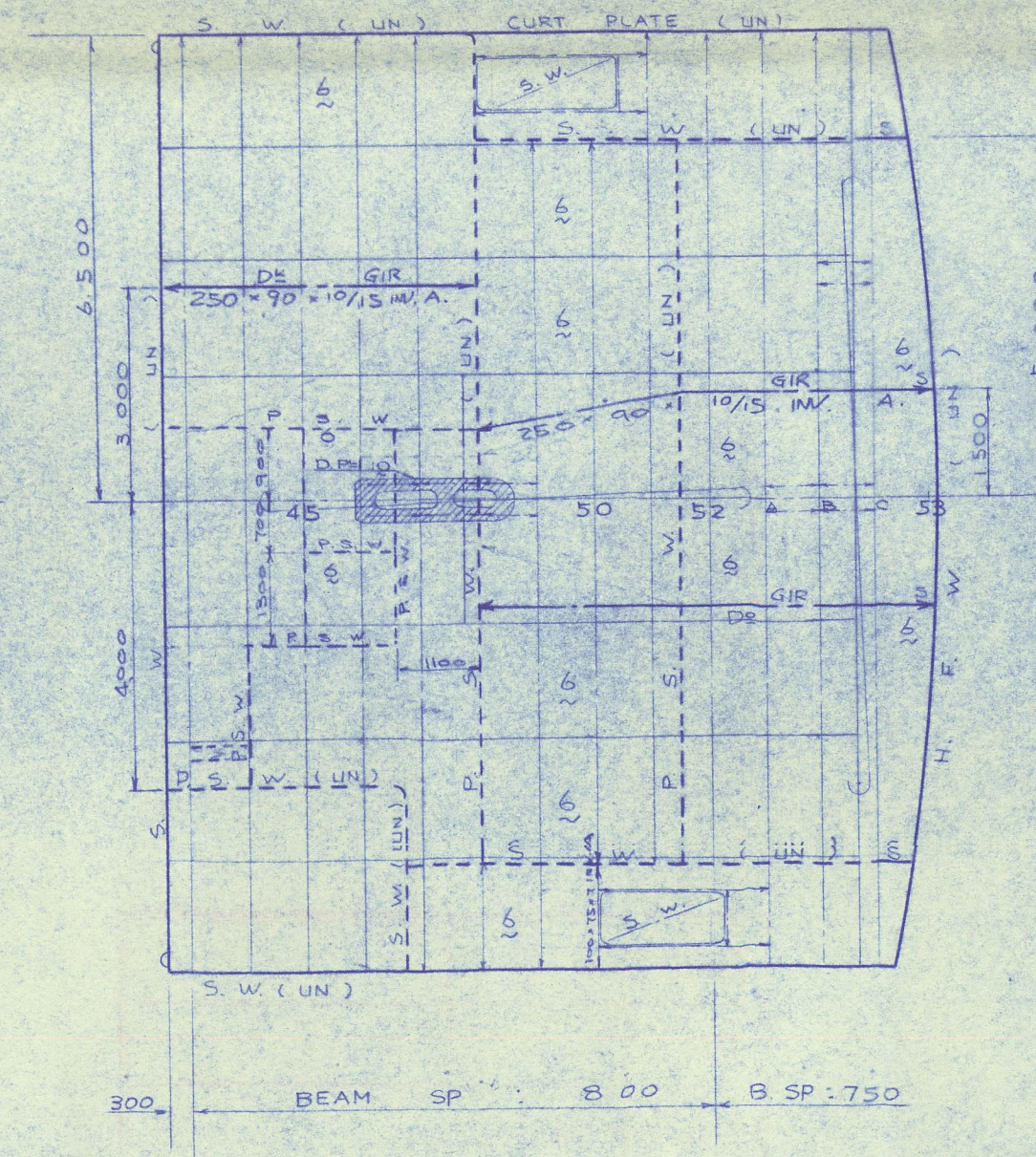
BOAT DECK
BEAM : 125 x 75 x 7 INV. A
NOTE: MARKS SHOW POSITION OF UNDER-STRUTS



NAVIGATION BRIDGE
BEAM : 100 x 75 x 7 INV. A



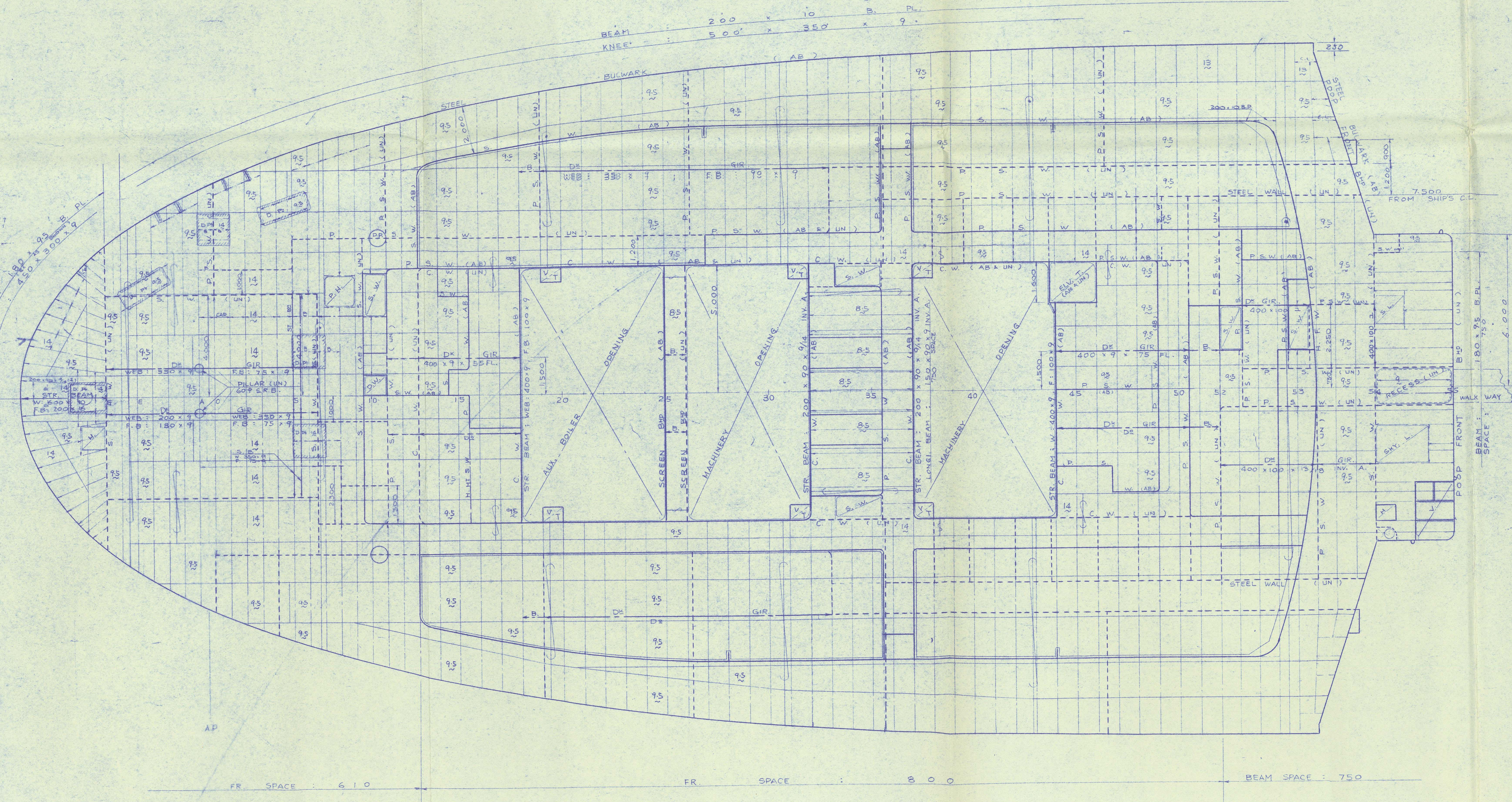
COMPASS PLATFORM
BEAM : 100 x 75 x 7 INV. A



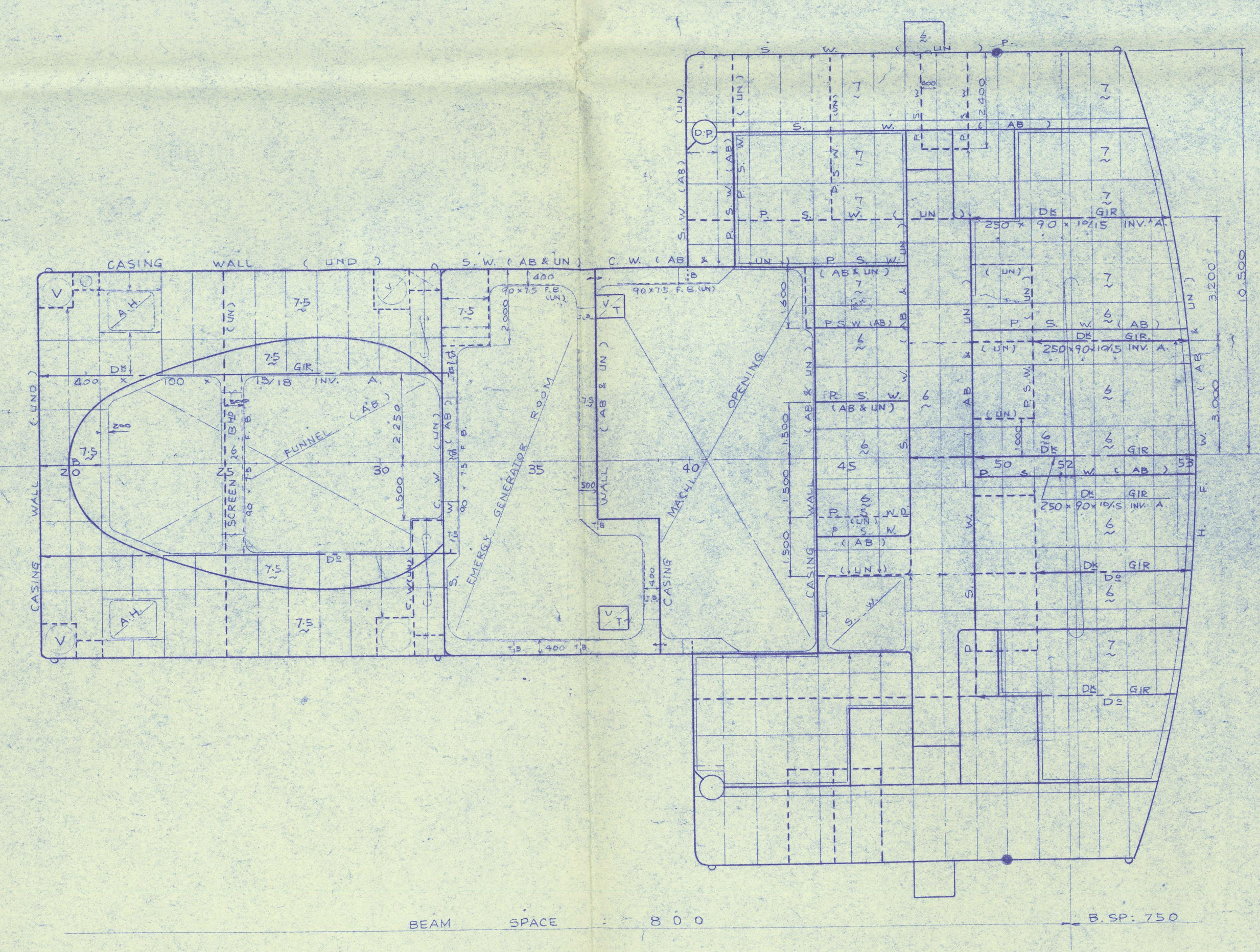
DECK	HEIGHT
UPPER DECK (FROM F.P. 2500)	AT F.P. 2500
UPPER DECK (FROM F.P. 2500)	AT 1802 2500
UPPER DECK (FROM F.P. 2500)	AT A.P. 2700
UPPER DECK (FROM F.P. 2500)	AT 1802 2500
UPPER DECK (FROM F.P. 2500)	AT 1802 2500
UPPER DECK (FROM F.P. 2500)	AT 1802 2500
UPPER DECK (FROM F.P. 2500)	AT 1802 2500
UPPER DECK (FROM F.P. 2500)	AT 1802 2500
UPPER DECK (FROM F.P. 2500)	AT 1802 2500
UPPER DECK (FROM F.P. 2500)	AT 1802 2500

CAMBER OF DECK	HEIGHT
UPPER DECK (FROM F.P. 2500)	AT F.P. 2500
UPPER DECK (FROM F.P. 2500)	AT 1802 2500
UPPER DECK (FROM F.P. 2500)	AT A.P. 2700
UPPER DECK (FROM F.P. 2500)	AT 1802 2500
UPPER DECK (FROM F.P. 2500)	AT 1802 2500
UPPER DECK (FROM F.P. 2500)	AT 1802 2500
UPPER DECK (FROM F.P. 2500)	AT 1802 2500
UPPER DECK (FROM F.P. 2500)	AT 1802 2500
UPPER DECK (FROM F.P. 2500)	AT 1802 2500
UPPER DECK (FROM F.P. 2500)	AT 1802 2500

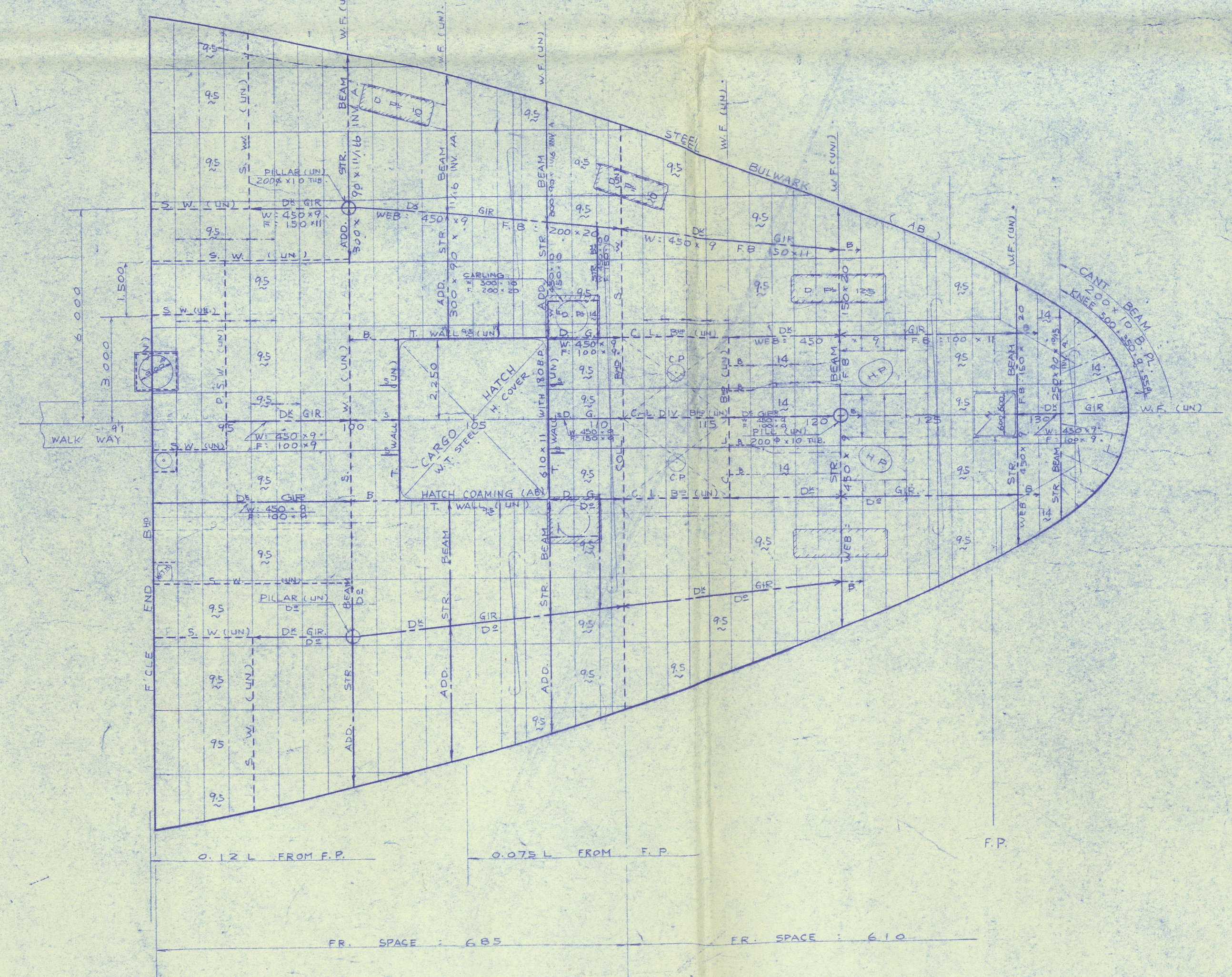
POOP DECK
BEAM : 200 x 10 x 9 INV. A



CAPTAIN BRIDGE
BEAM : 100 x 75 x 7 INV. A




FORECASTLE DECK
BEAM : 200 x 75 x 7 INV. A
KNEE : 200 x 550 x 10 x 50 PLATE



YASUDOMFORTUSSR
LEBEDIN

CONSTRUCTION PROFILE
AND
DECK PLAN
(SHEET 2)
КОНСТРУКТИВНЫЙ ПРОФИЛЬ
И ПЛАН ПАЛУБЫ
(2)
FINISHED PLAN

DIMENSIONS 15000 x 2700 x 1425
SCALE 1/100 CLASS R.S.
SHIP DESIGNING SECTION
HARK LUGAN'S WORKS
MANAGER
CHIEF
HEAD
CHECKED
DRAWN
DATE 200 8 1942
ITEM NO.
H-146
ITEM
CLOTH NO.

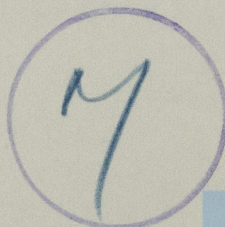
"LEBEDIN" 

CONSTRUCTION PROFILE & DECK PLAN (SHEET 2)
("AS BUILT")

TO BE ATTACHED TO REPT NO FE-10725.

Kobe Rpt. No.	10725
Port of Survey	HIROSHIMA
Name of Ship.	LEBEDIN
Title of Plan.	Profile & Deck

RECORDS DEPT.
LONDON.



© 2021

Lloyd's Register
Foundation

011665-011670-0086