

Lloyd's Register of Shipping.  
SURVEYS FOR FREEBOARD.  
(CONDITIONS OF ASSIGNMENT.)

No 16517

Ship's Name *SWAROZVC*

Port of Survey *Amsterdam*

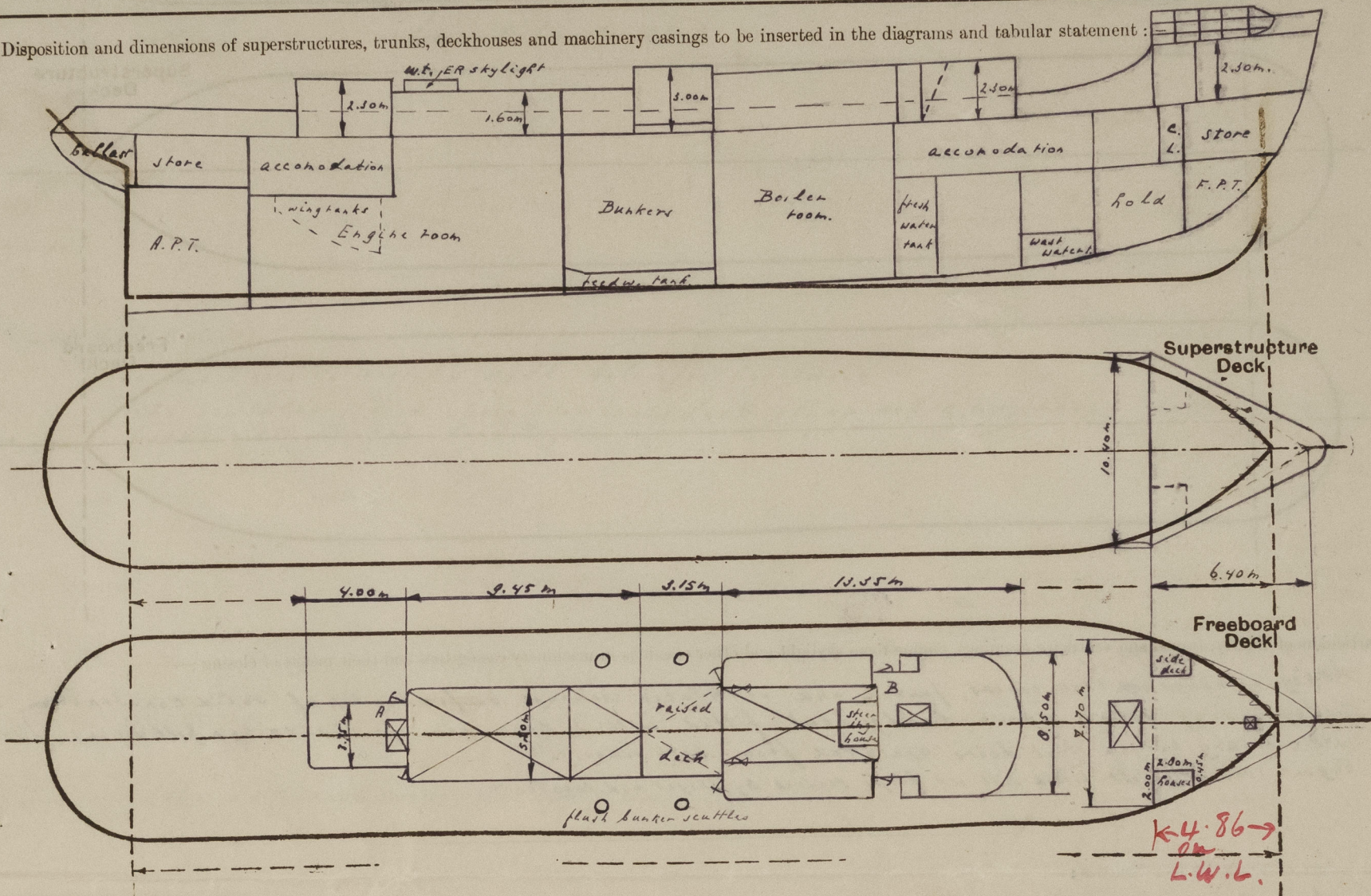
Official Number *✓ 53222*

Surveyor's Signature *[Signature]*

Nationality and Port of Registry *Polish*

Date of Survey *3-2-'48*

Disposition and dimensions of superstructures, trunks, deckhouses and machinery casings to be inserted in the diagrams and tabular statement:



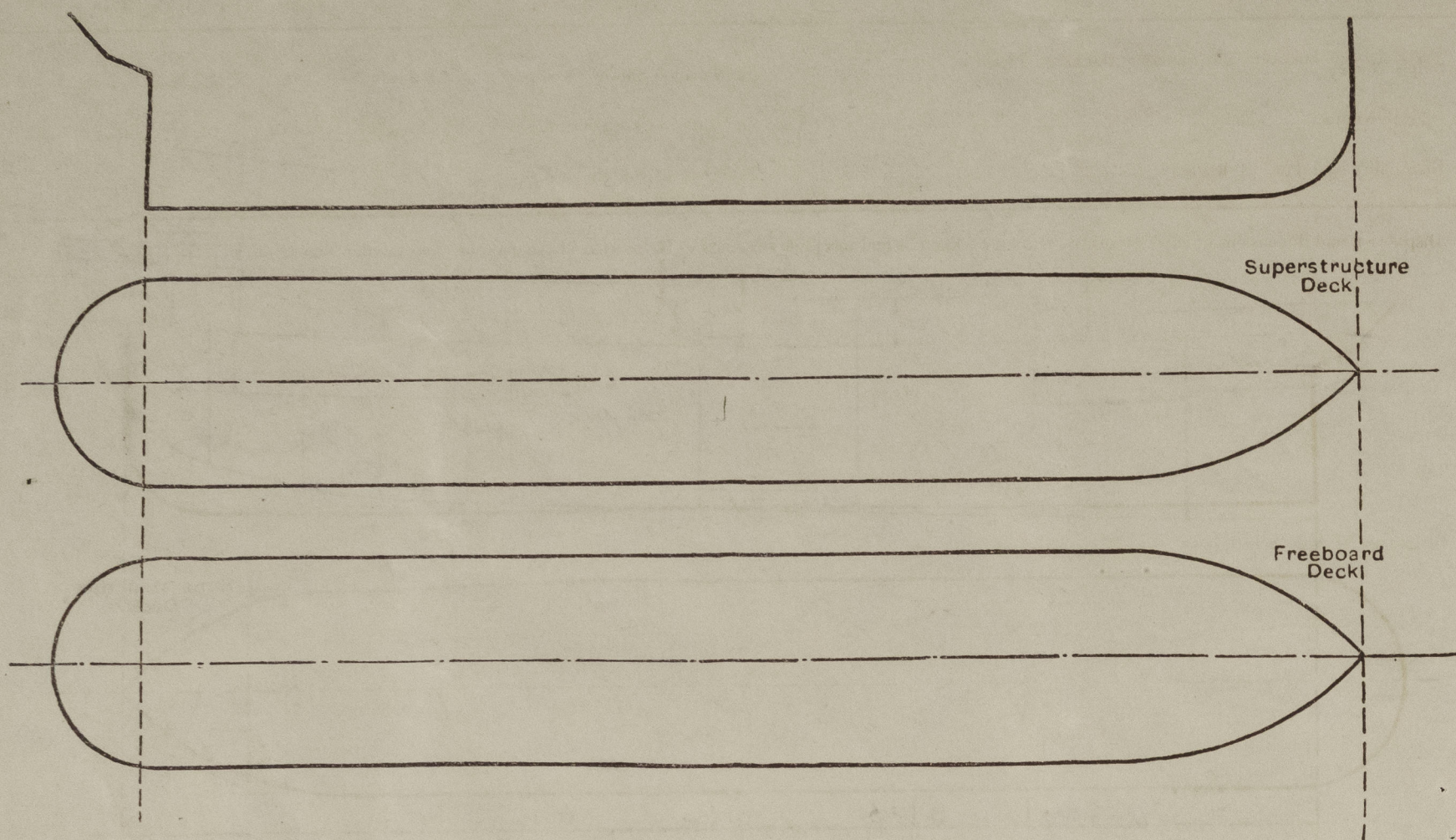
Particulars of Superstructures, Trunks, Casings, Deckhouses.								
	Coaming	Plating	Stiffeners	Spacing	End Attachments of Stiffeners	Size of Openings	Height of Sills	Height of Casings
Poop Bulkhead ... ..	✓							
Raised Quarter Deck Bulkhead ...	✓							
Bridge, After Bulkhead ... ..	✓							
Bridge, Forward Bulkhead ... ..	✓							
Forecastle Bulkhead ... ..	✓	<i>open forecastle</i>						
Trunk, Aft ... ..	✓							
Trunk, Forward ... ..	✓							
Exposed Machinery Casings on Freeboard or Raised Quarter Decks ...	-	6 mm	165 x 50 x 7	675 mm	brackets top	4 x 1.25 x 0.61 m	610 mm	160 mm
Exposed Machinery Casings on Superstructure Decks ... ..	✓							
Machinery Casings within Superstructures not fitted with Class I Closing Appliances ... ..	✓							
Deckhouses on Flush Deck Ships ...	✓							

Particulars of Closing Appliances (state if capable of being manipulated from both sides).	
Poop Bulkhead ... ..	✓
Raised Quarter Deck Bulkhead ...	✓
Bridge, After Bulkhead ... ..	✓
Bridge, Forward Bulkhead ... ..	✓
Forecastle Bulkhead ... ..	✓ <i>Open.</i>
Exposed Machinery Casings on Freeboard or Raised Quarter Decks ...	4 hinged w.t. steel doors (operated from both sides) ✓
Exposed Machinery Casings on Superstructure Decks ... ..	✓
Machinery Casings within Superstructures not fitted with Class I Closing Appliances ... ..	✓
Deckhouses on Flush Deck Ships ...	✓



### PARTICULARS OF PROTECTION TO OPENINGS, ETC.

The following diagrams should be used to indicate the positions of cargo and coaling hatchways, gangway, cargo and coaling ports, ventilators, companionways, etc., which would affect the seaworthiness of the ship:—



Particulars of fiddley, funnel and ventilator coamings, engine room skylight and other openings in machinery casing tops and their means of closing :—

Fidley openings with covers, funnel and ventilator casings on fidley top of solid construction. ✓  
Fidley casing sides above bridgedeck fitted with 2 door openings (4.5 x 0.62 m. B. 450 mm). fitted  
with ordinary hinged steel doors operated from both sides. ✓  
Engine room skylight fitted with w.t. flaps secured by hinges and toggles. ✓

Particulars of Flush Bunker Scuttles :—

4 flush bunker scabbles, fitted on free board deck, please see sketch, diameter 450mm, fitted with chain attachment.

Particulars of Companionways :—

A. Companion leading to crew's space aft (aft engine room casing), deck opening  $1.45 \times 0.80$ , door opening  $1.29 \times 0.60$ , sill  $0.614$ , fitted with hinged w.t. steel door, operated from both sides. ✓

B. Companion leading to officer's accommodation in bridge space and below, deck opening  $1.50 \times 0.85$ , 2 door openings  $1.29 \times 0.61$  m, sill  $0.61$  m, fitted with hinged steel w.t. doors operated from both sides. ✓

Particulars of Ventilators in exposed positions on freeboard and superstructure decks :—

2 Acft. ladders " ninth deck abaft bridge deckhouse, coaming dia 500mm height 760mm thickness 10mm. to engine room.  
2 " " foche " coaming dia 200mm, height 980mm thickness 8 $\frac{1}{2}$ mm leading to store room  
2 " " " " " " 200 " " gsa " 8 $\frac{1}{2}$  " " Hold. ✓

Wooden plugs and canvas covers complete. ✓

Particulars of Air Pipes in exposed positions on freeboard, raised quarter, or superstructure decks :—

1	air pipe of fore peak	2"	
1	"	waste water tank	2"
2	"	thin tanks forward	3"
2	"	fresh water tanks	2 1/2"
2	"	d.h. feed water tanks	2 1/2"
2	"	thin tanks aft	3"
1	"	after peak	2 1/2"
1	"	ballast tank aft	2"

Height of air pipes given above deck  
Wood plugs with chain attachments complete. ✓

Particulars of Gangway Cargo and Coaling Ports :—

bone fitted

Particulars of Scuppers and Sanitary Discharge Pipes :—

4 scuppers each side through free board deck 9 shell 5" &  
2 " from steering house fitted on sanitary discharge.  
No lavatories or wash places are fitted below the free board deck.  
Sanitary discharges from spaces above the free board deck are fitted  
with non-return valves at ship's sides.

Particulars of Side Scuttles:—

side lights in vessels shell below free board deck. ✓  
side scuttles fitted above free board deck all of solid approved construction and  
fitted with hinged dead lights. ✓

Vertical distance of Sill of lowest Side Scuttle above top of keel..... 7150 mm.

Particulars of Guard Rails :—

Chain bulwarks all round, height 1.10, thickness 10-8mm, stanchions 160 x 8, welded to deck & bulwarks spacing 1.80m.   
 Guard rails on fore castle and round winch deck height 1.10m, forged stanchions, 1 top rail of 2" pipe, 2 rods 7/8" dia between.

Particulars of Gangways, Lifelines, etc. :—


Storm hand grips all round dockhouse & casing on free board deck.

Particulars of Freeing Arrangements.						
	Length of Bulwark	Height of Bulwark	Size of Freeing Ports	Number each side	Area each side	Rule area each side
After Well ... ..	44.00m 40.64 ✓	1.10m ✓	15.00 x 2.50m	7	2.41m <sup>2</sup>	1.94m <sup>2</sup> 7L ✓
Forward Well ... ..						

State position of each freeing port ... .. ( After Well:— *Freeing ports at equal distances in Bulwarks.*  
 (F. and A. position and height above deck edge) ( Forward Well:— *Height above deck edge 0.25m ✓*

~~State whether the freeing ports are fitted with shutters, <sup>Ringed</sup> bars, or rails, and give particulars of such:—~~

Additional area where sheer is less than standard.



© 2021  
Lloyd's Register



PARTICULARS OF PROTECTION TO OPENINGS, ETC.

HATCHWAYS ON FREEBOARD AND SUPERSTRUCTURE DECKS.											
Description of Hatchway	...	...	...	forward store	hold						
Dimensions of Hatchway	...	...	...	700 x 700 mm	2. - x 155 h						
COAMINGS	{	Height above Deck	...	790 ↓	800 ↓						
		Thickness	...	10 mm ↓	10 mm ↓						
		Sides	...								
		Ends	...								
Stiffeners	...	...	✓	✓							
Brackets, Stays	...	...	✓	✓							
HATCH BEAMS	{	Number	...								
		Spacing	...								
		Scantling and Sketch	...								
			...	✓	✓						
Bearing Surface	...	...									
FORE AND AFTERS	{	Number	...								
		Spacing	...								
		Unsupported Lengths	...								
		Scantling* and Sketch	...	✓	✓						
Bearing Surface	...	...									
HATCH COVERS	{	Material	...	steel ↓	wood ↓						
		Thickness...	...	6 mm ↓	65 mm ↓						
		How fitted	...	w.f. ↓	f.a. ↓						
		Bearing Surface	...	4/oggl ↓	75 mm ↓						
Spacing of Cleats	...	...	...	3	550 mm						
Number of Tarpaulins	...	...	...		two ↓						
*Are wood <sup>covers</sup> fore and afters steel shod at all bearing surfaces? yes ↓											
Are battens and wedges efficient and in good condition? yes											
Are tarpaulins in good condition and in accordance with rule requirements? yes											
Are lashings provided in accordance with rule requirements? Locking bars fitted.											

Particulars of any special features :—

Endorsement at first survey and at surveys for renewal of Certificate :—

The fittings and appliances are in accordance with the particulars shown on this form (or as now modified) and are in good condition.

