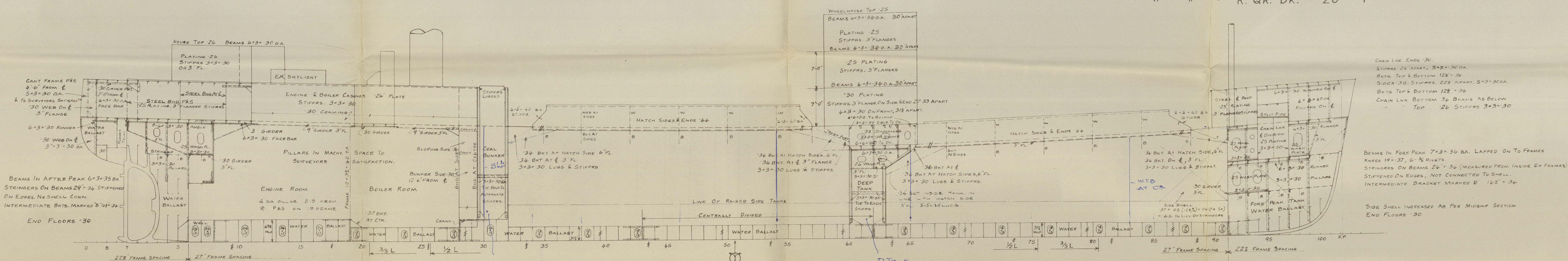


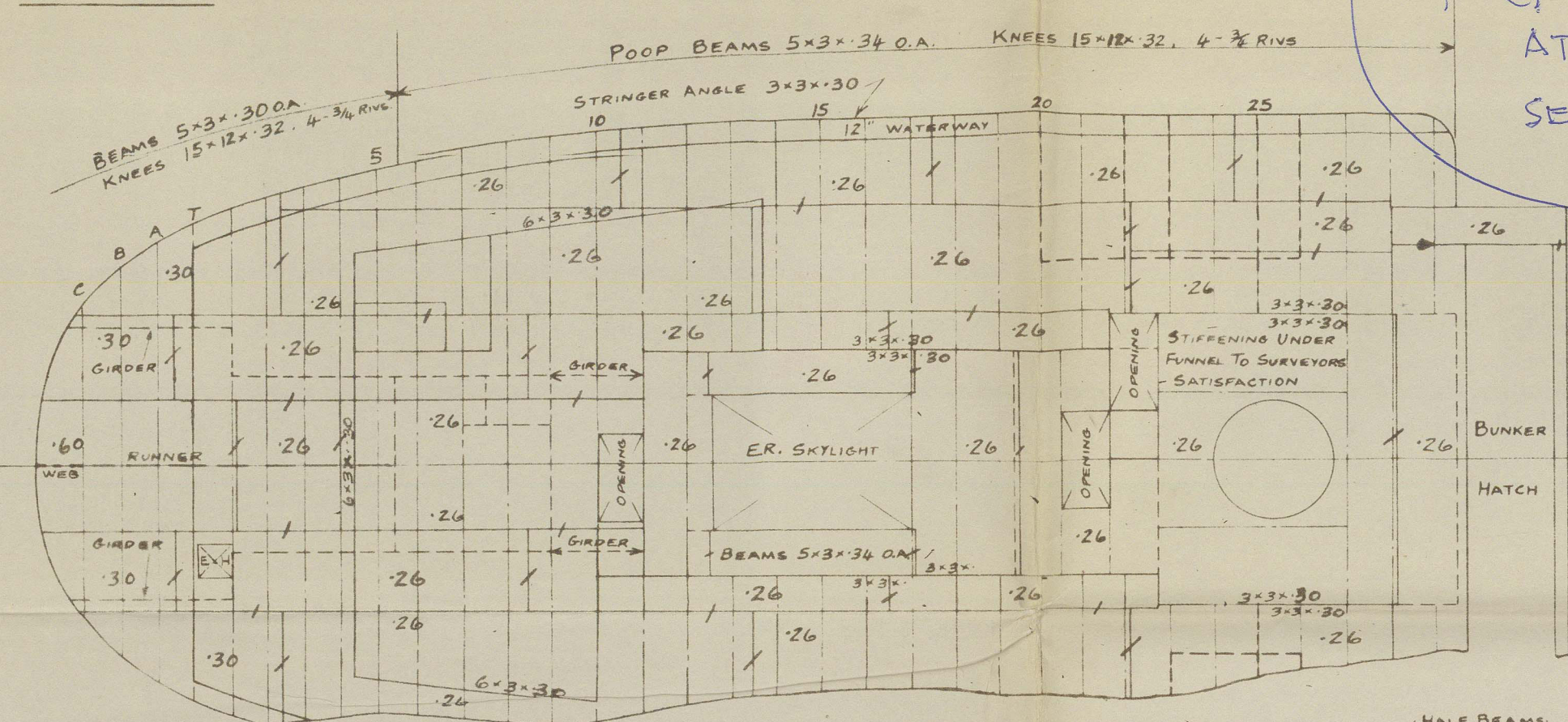
No 401, 2, 3 & 4 PROFILE & DECKS.

SCALE: $\frac{1}{8}" = 1 \text{ FOOT.}$

CLASS 100 A1 LLOYDS
LENGTH B.P. 224'-0"
BREADTH MLD. 35'-9"
DEPTH MLD. TO UPPER DK. 16'-3"
" " " R. QR. DK. 20'-1"

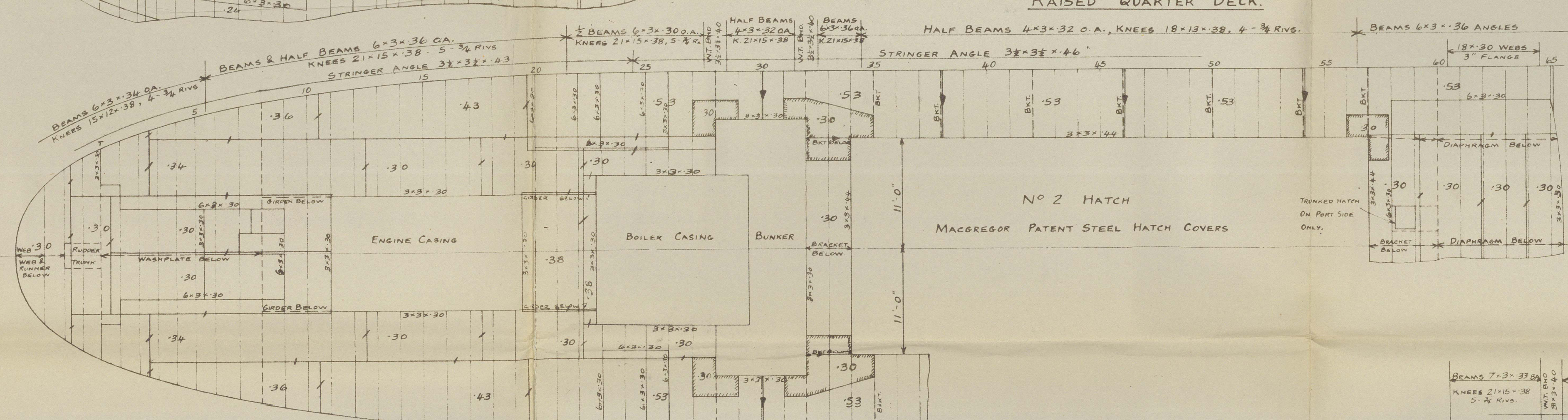


POOP DECK

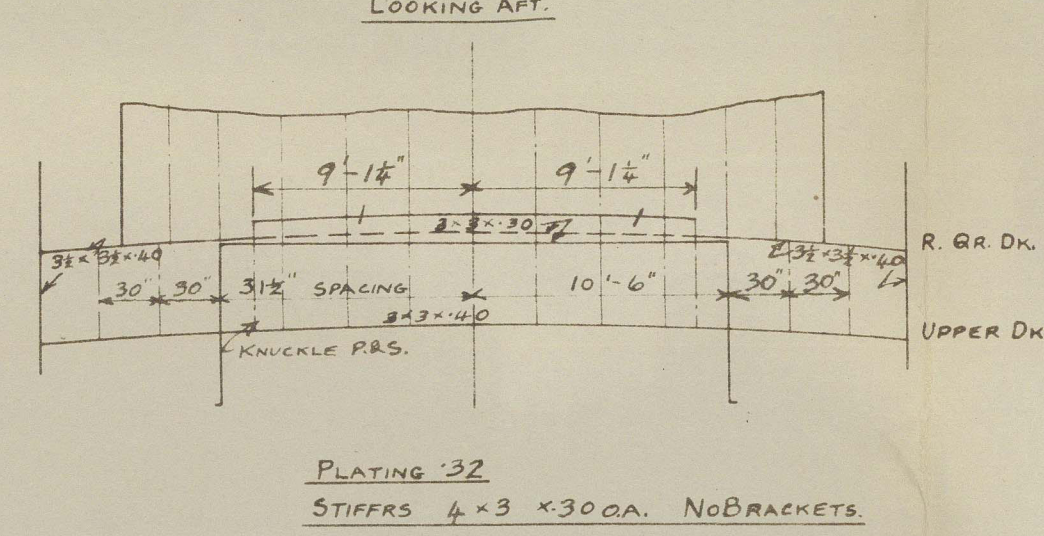


Longitudinal stiffeners in line of hatch sides, for full length of hold.
ALTERATIONS EFFECTED AT ROT. 9.61. SEE ROT. RPT. NO 52384.

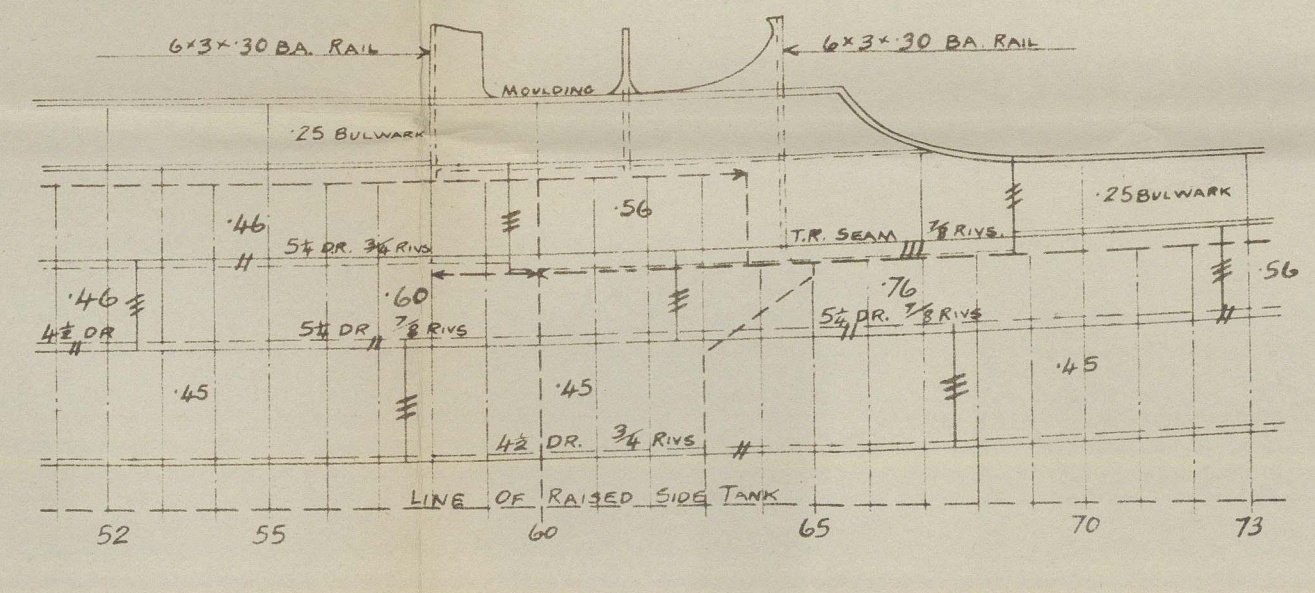
RAISED QUARTER DECK



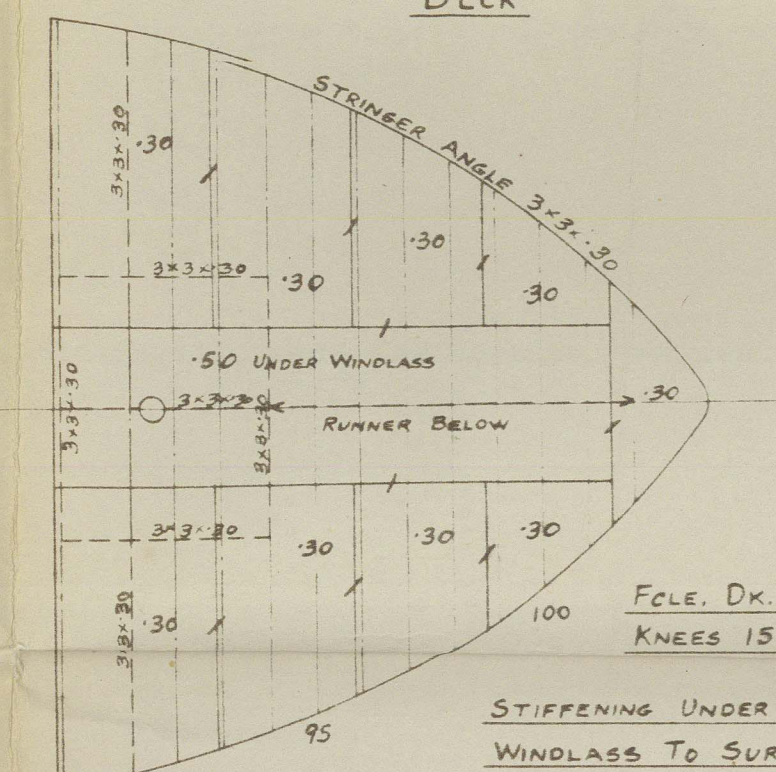
BREAK BULKHEAD



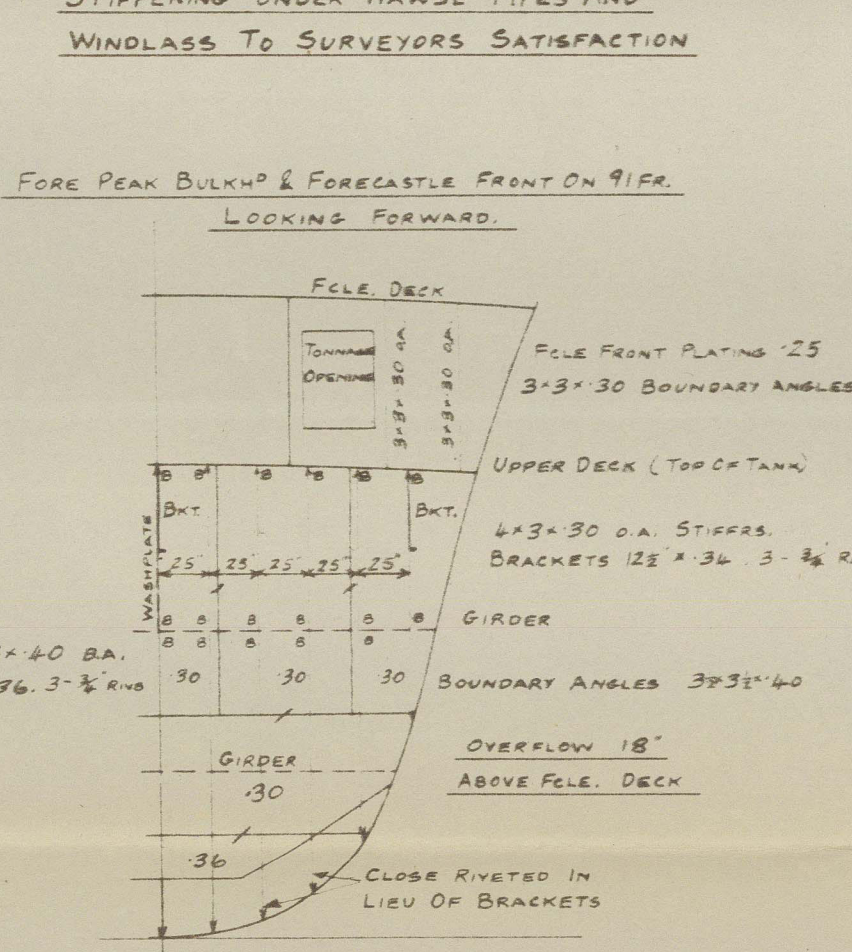
STRENGTHENING OF SHELL AT BREAK



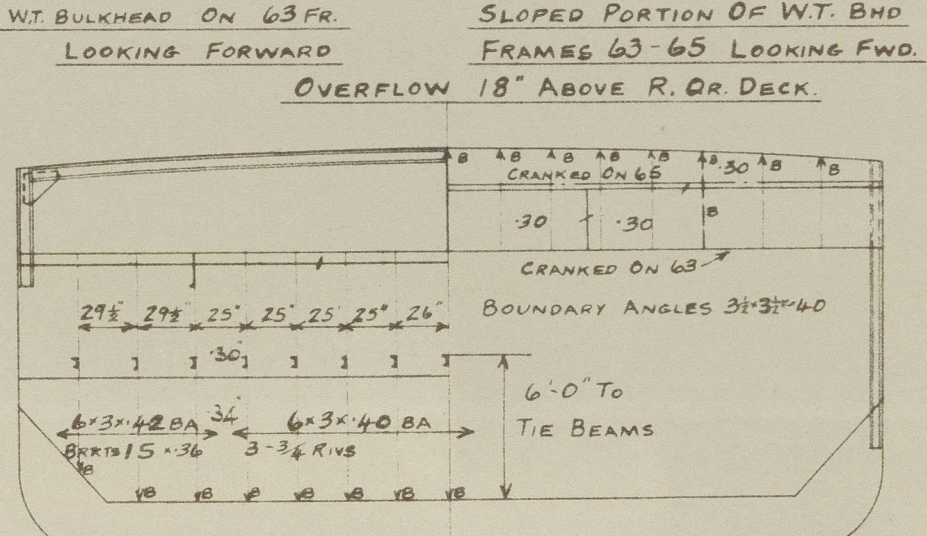
FORECASTLE DECK



STIFFENING UNDER HAWSE PIPES AND WINDLASS TO SURVEYORS SATISFACTION



UPPER DECK



N° 1 HATCH

MACGREGOR PATENT STEEL HATCH COVERS

DOUBLE BOTTOM FORWARD

LINE OF RAISED SIDE TANKS

WATER TIGHT BULKHEAD ON TRANSOM

WATER TIGHT BULKHEAD ON 6 FRAME

WATER TIGHT BULKHEAD ON 6 FRAME

WATER TIGHT BULKHEAD ON 6 FRAME

WATER TIGHT BULKHEAD ON 6 FRAME

WATER TIGHT BULKHEAD ON 6 FRAME

WATER TIGHT BULKHEAD ON 6 FRAME

WATER TIGHT BULKHEAD ON 6 FRAME

WATER TIGHT BULKHEAD ON 6 FRAME

WATER TIGHT BULKHEAD ON 6 FRAME

WATER TIGHT BULKHEAD ON 6 FRAME

WATER TIGHT BULKHEAD ON 6 FRAME

WATER TIGHT BULKHEAD ON 6 FRAME

WATER TIGHT BULKHEAD ON 6 FRAME

WATER TIGHT BULKHEAD ON 6 FRAME

WATER TIGHT BULKHEAD ON 6 FRAME

WATER TIGHT BULKHEAD ON 6 FRAME

WATER TIGHT BULKHEAD ON 6 FRAME

WATER TIGHT BULKHEAD ON 6 FRAME

WATER TIGHT BULKHEAD ON 6 FRAME

WATER TIGHT BULKHEAD ON 6 FRAME

WATER TIGHT BULKHEAD ON 6 FRAME

WATER TIGHT BULKHEAD ON 6 FRAME

WATER TIGHT BULKHEAD ON 6 FRAME

WATER TIGHT BULKHEAD ON 6 FRAME

WATER TIGHT BULKHEAD ON 6 FRAME

WATER TIGHT BULKHEAD ON 6 FRAME

WATER TIGHT BULKHEAD ON 6 FRAME

WATER TIGHT BULKHEAD ON 6 FRAME

WATER TIGHT BULKHEAD ON 6 FRAME

WATER TIGHT BULKHEAD ON 6 FRAME

WATER TIGHT BULKHEAD ON 6 FRAME

WATER TIGHT BULKHEAD ON 6 FRAME

WATER TIGHT BULKHEAD ON 6 FRAME

WATER TIGHT BULKHEAD ON 6 FRAME

No 401 MENDIP
No 402 POLDEN
No 403 BODMIN MOOR
No 404 BRENT KNOLL

B. P. AUSTIN & SON, LTD.
SHIPBUILDERS & REPAIRERS,
SUNDERLAND.
Drawing No. 11627-0092

01619-01627-0092

DUNDEE LAND RPT. NO. 35403

MESSRS S. P. AUSTIN & SON. L^R

S.S. "BRENT KNOLL" ★

NO. 404

PROFILE & DECKS.

"AS BUILT"

RECORDS DEPT.
LONDON

4



© 2021

Lloyd's Register
Foundation

011619-011629-0092