

Plan approved
11-1-1945

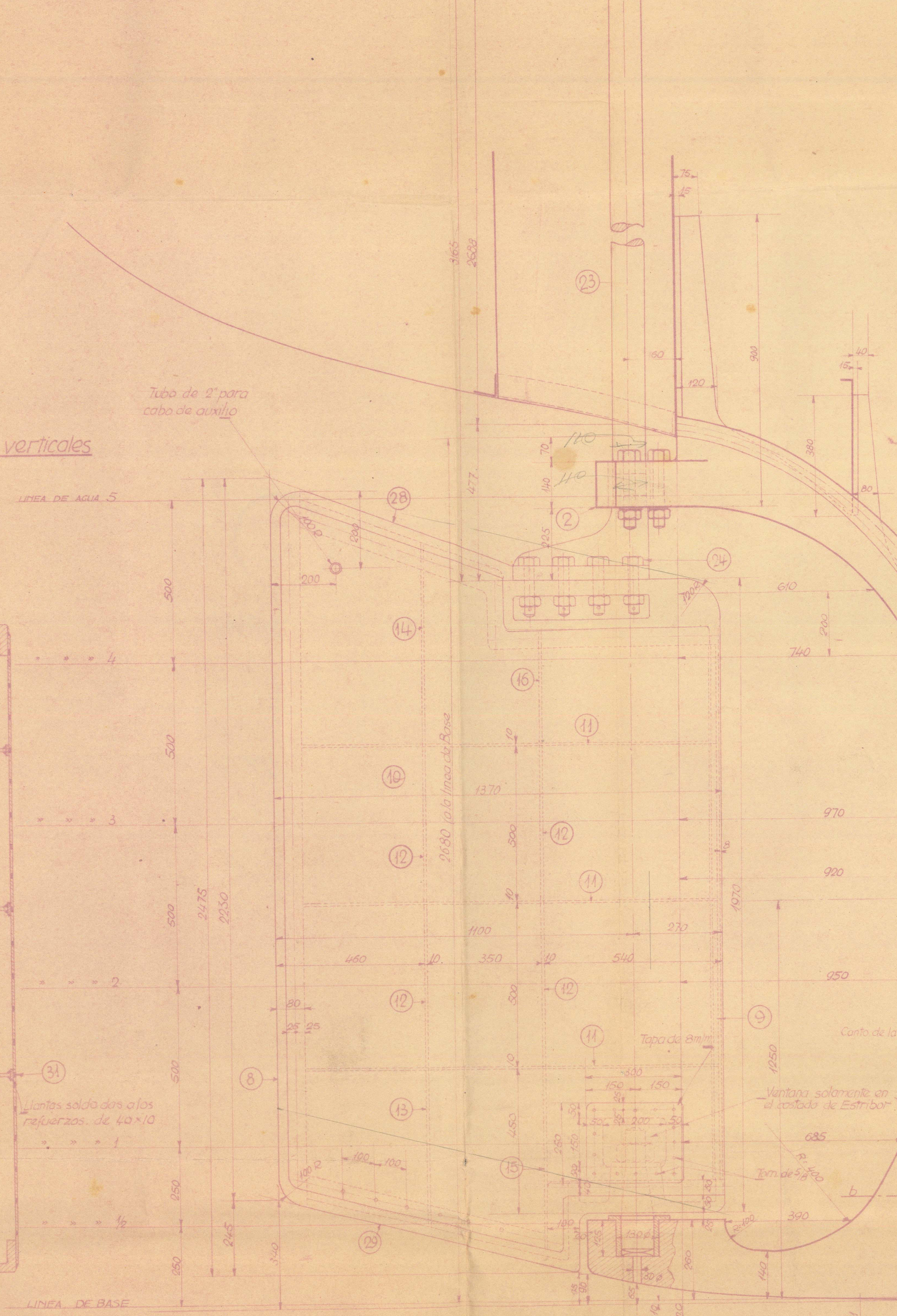
Copy of approved plan
16-1-1945

Secciones por las Refuerzos verticales

Esta parte llevará 150 diam.
de fierro para la viga 100 mm

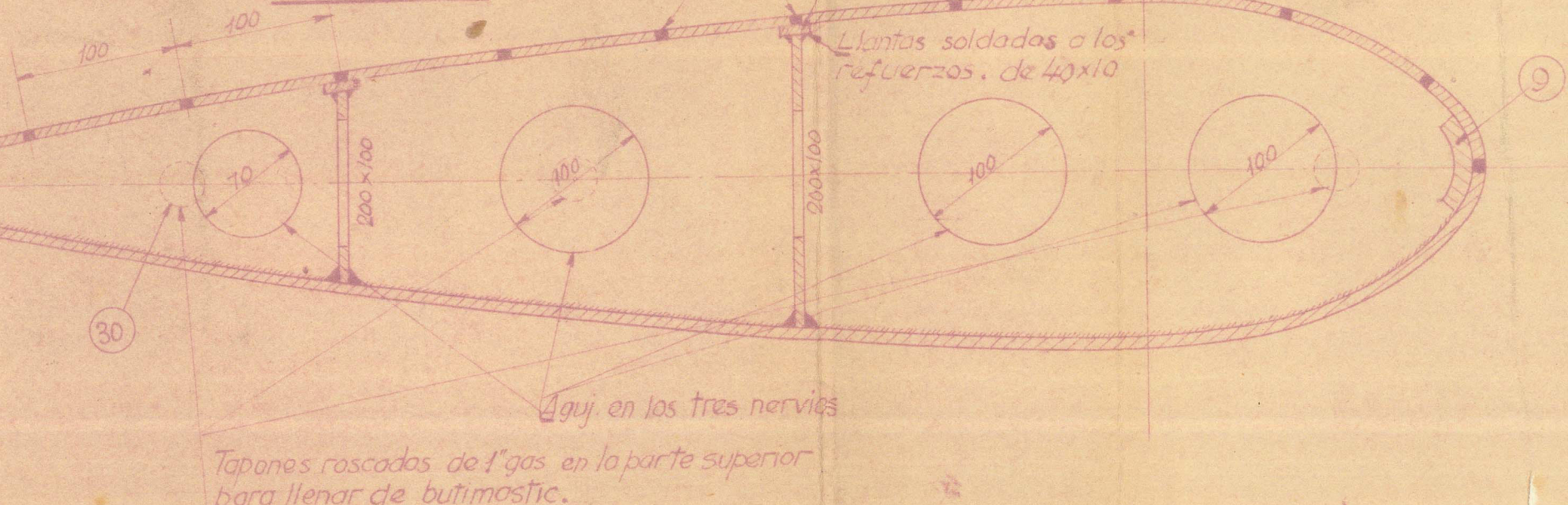
Altura que se determinará de
acuerdo con el Aparato de gobierno

Cto. del (la) centro



Dimensiones del timón
- Escala 1:5 -

Detalle de los refuerzos horizontales
- Escala 1:5 -



Tachones roscados de 1/2" en la parte superior
para llenar de bitumástico.

OBSERVACIONES

Las planchas del timón se unirán al armazón
por medio de botones de soldadura hendida distan-
ciados 100mm.

El timón llevará un armazón de soldadura en el canto
de los chapales hasta los puntos de tangencia.

La plancha de base se acoplará a los nervios horizontales
y verticales por medio de ranuras de soldadura hendida
de 30x10 paso 100mm.

Los trabajos de soldadura en el cuerpo del timón han de
hacerse con mucho cuidado.

El timón ha de construirse completamente estanco.

El timón se sellará de Bitumástico.

$$A = \frac{1}{2} \times 1.37 \times 27 = 20.445$$

$$B = \frac{1}{2} \times 1.26 \times 12.5 = 7.875$$

$$C = \frac{1}{2} \times 1.26 \times 12.5 = 7.875$$

$$D = \frac{1}{2} \times 1.26 \times 12.5 = 7.875$$

$$E = \frac{1}{2} \times 1.26 \times 12.5 = 7.875$$

$$F = \frac{1}{2} \times 1.26 \times 12.5 = 7.875$$

$$G = \frac{1}{2} \times 1.26 \times 12.5 = 7.875$$

$$H = \frac{1}{2} \times 1.26 \times 12.5 = 7.875$$

$$I = \frac{1}{2} \times 1.26 \times 12.5 = 7.875$$

$$J = \frac{1}{2} \times 1.26 \times 12.5 = 7.875$$

$$K = \frac{1}{2} \times 1.26 \times 12.5 = 7.875$$

$$L = \frac{1}{2} \times 1.26 \times 12.5 = 7.875$$

$$M = \frac{1}{2} \times 1.26 \times 12.5 = 7.875$$

$$N = \frac{1}{2} \times 1.26 \times 12.5 = 7.875$$

$$O = \frac{1}{2} \times 1.26 \times 12.5 = 7.875$$

$$P = \frac{1}{2} \times 1.26 \times 12.5 = 7.875$$

$$Q = \frac{1}{2} \times 1.26 \times 12.5 = 7.875$$

$$R = \frac{1}{2} \times 1.26 \times 12.5 = 7.875$$

$$S = \frac{1}{2} \times 1.26 \times 12.5 = 7.875$$

$$T = \frac{1}{2} \times 1.26 \times 12.5 = 7.875$$

$$U = \frac{1}{2} \times 1.26 \times 12.5 = 7.875$$

$$V = \frac{1}{2} \times 1.26 \times 12.5 = 7.875$$

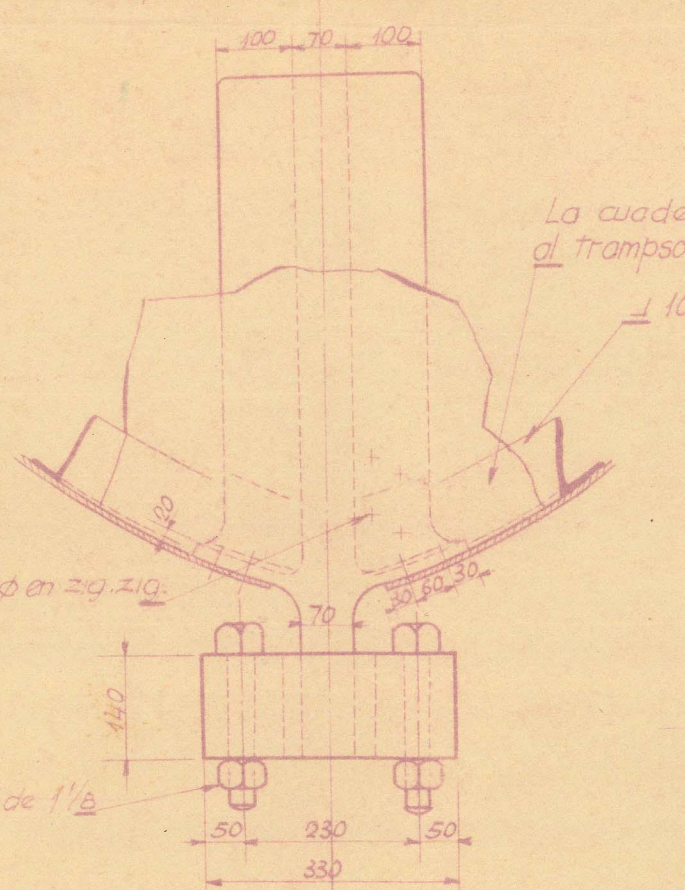
$$W = \frac{1}{2} \times 1.26 \times 12.5 = 7.875$$

$$X = \frac{1}{2} \times 1.26 \times 12.5 = 7.875$$

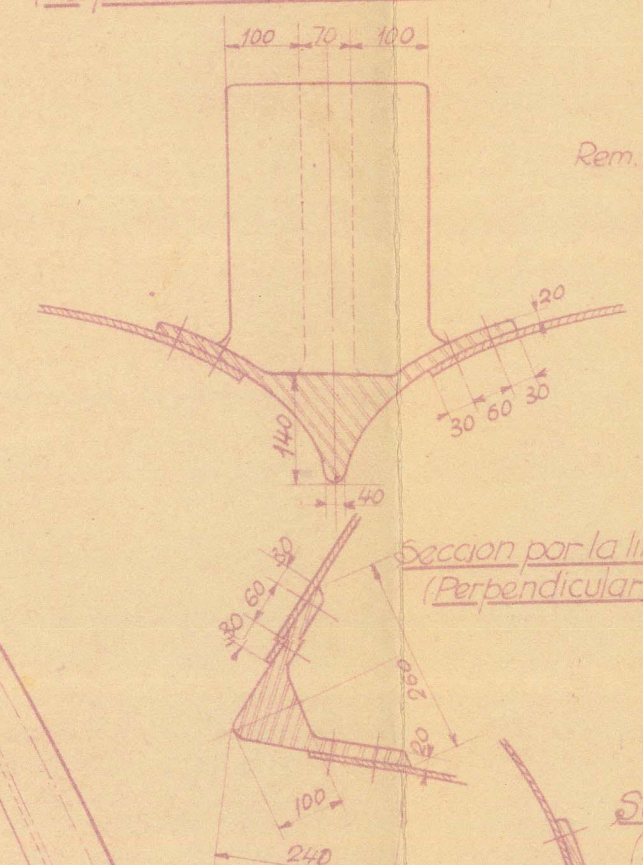
$$Y = \frac{1}{2} \times 1.26 \times 12.5 = 7.875$$

$$Z = \frac{1}{2} \times 1.26 \times 12.5 = 7.875$$

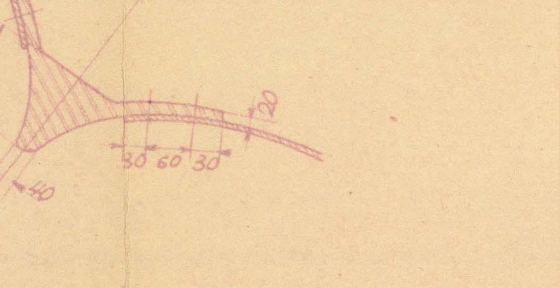
Sección por el Arm 9 (Miranda a proa)
Perpendicular a la base



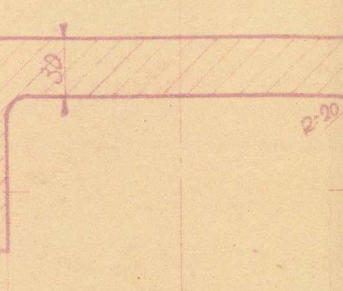
Sección por el Arm 1
Perpendicular a la base, Miranda a proa



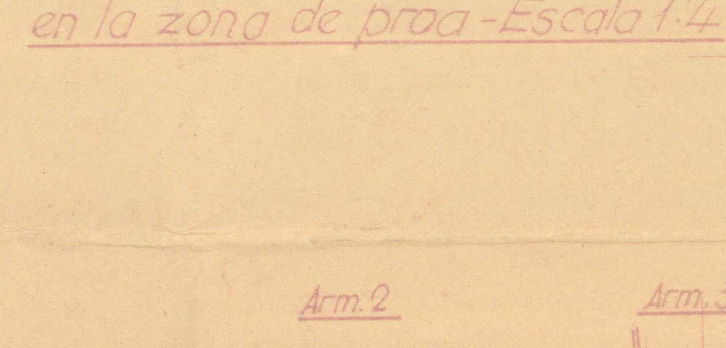
Sección por la línea de agua 5
Perpendicular a la base



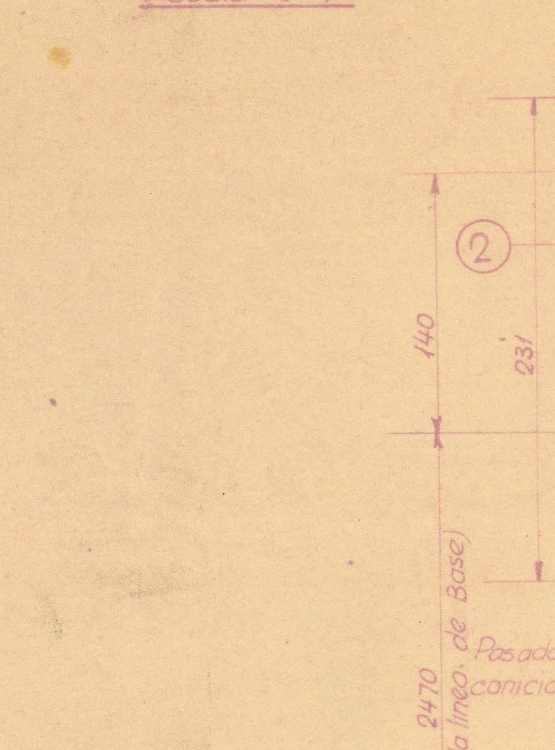
Sección ff'



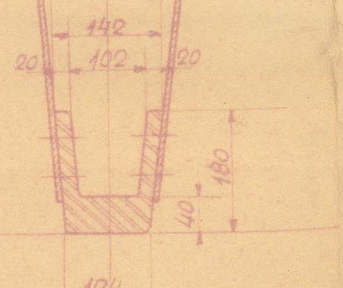
Detalle de la terminación del timón
en la zona de proa - Escala 1:4



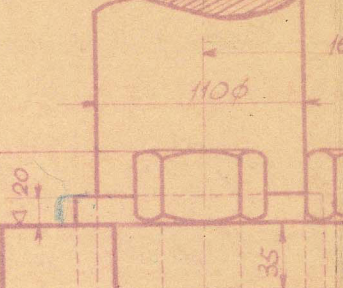
Detalle del soporte que da
la media del timón
- Escala 1:4 -



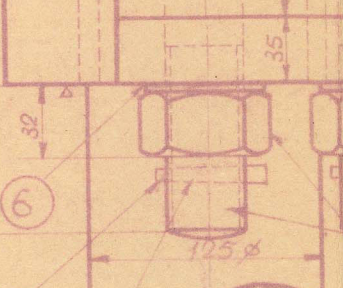
Arm 2



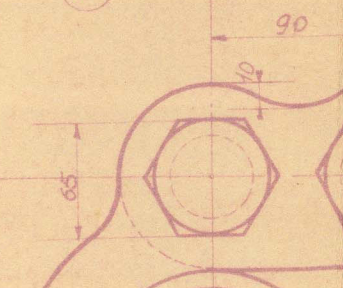
Arm 3



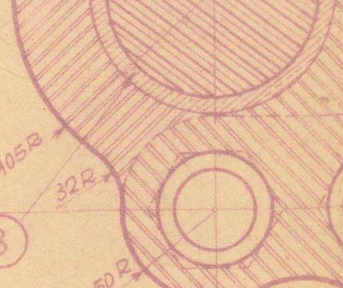
Arm 4



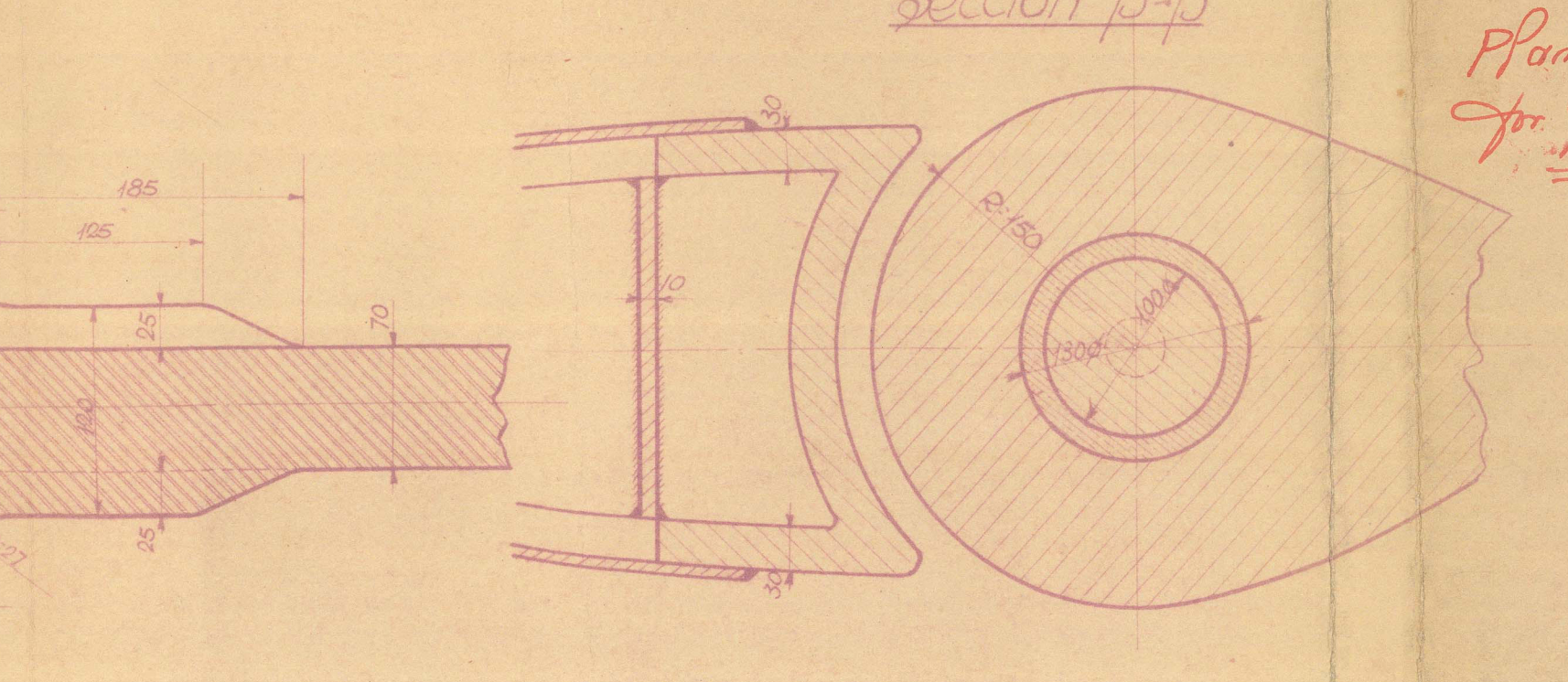
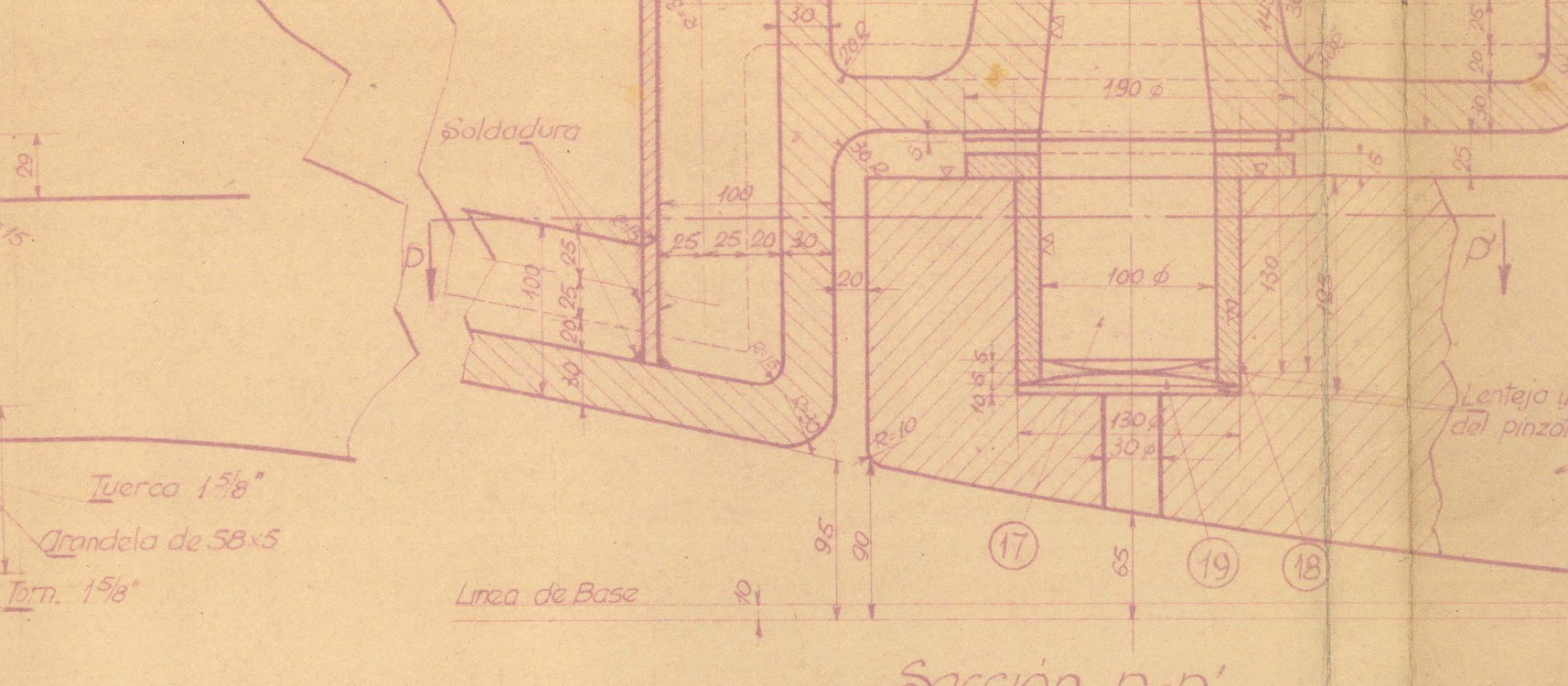
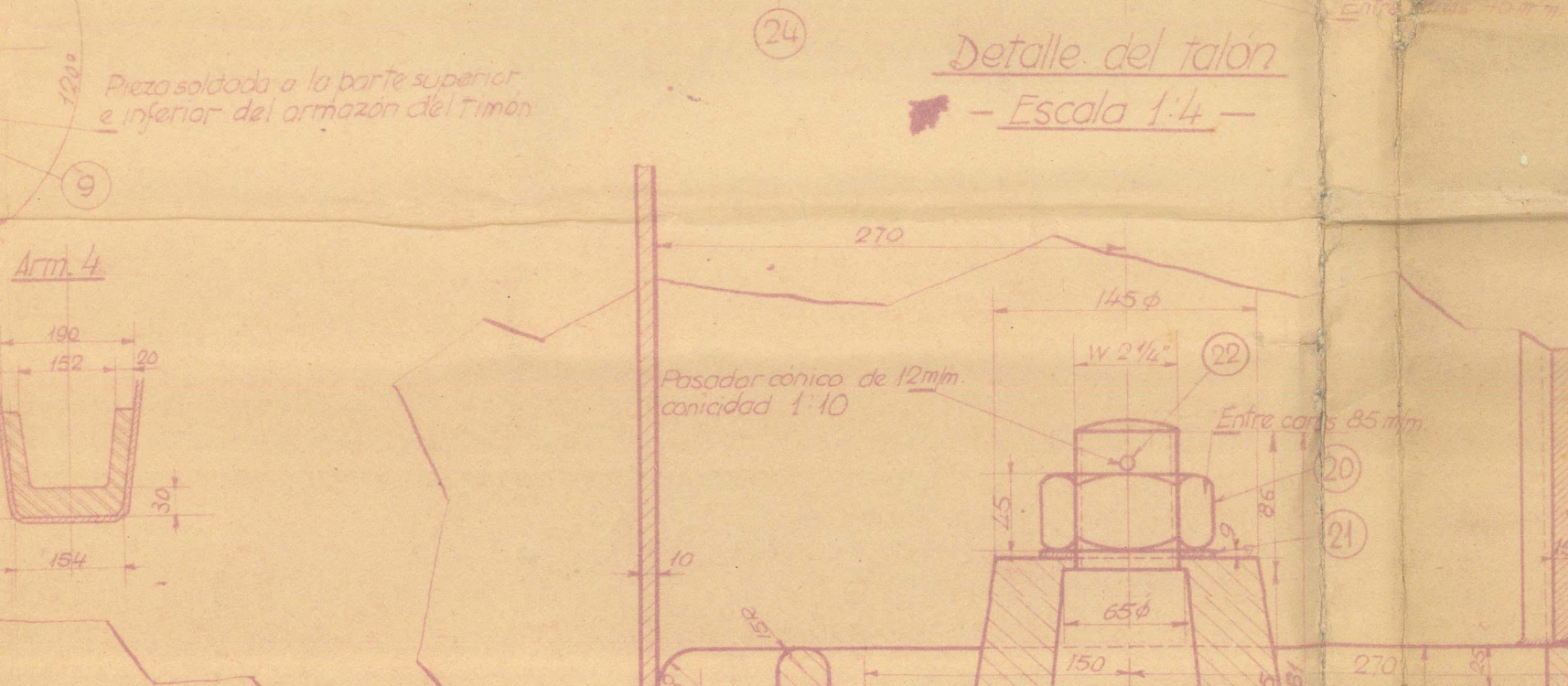
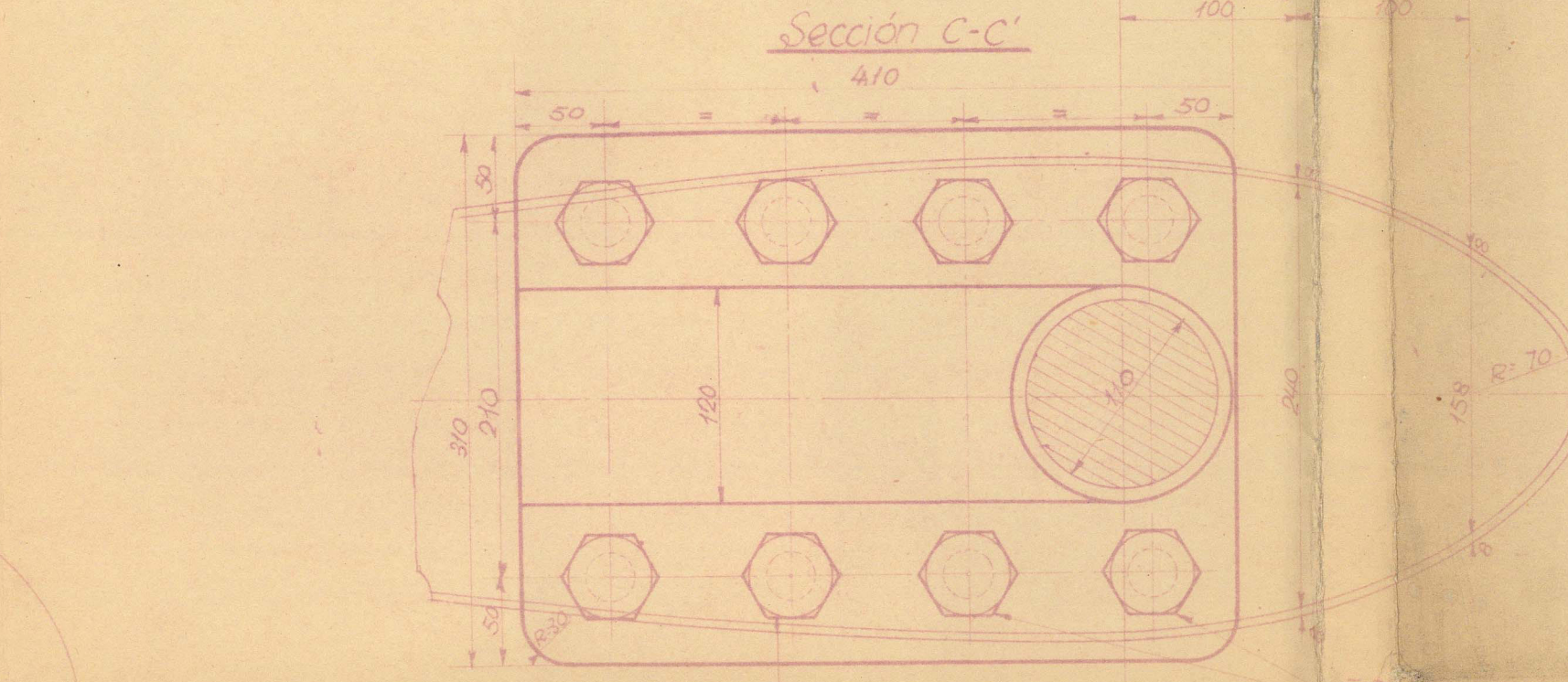
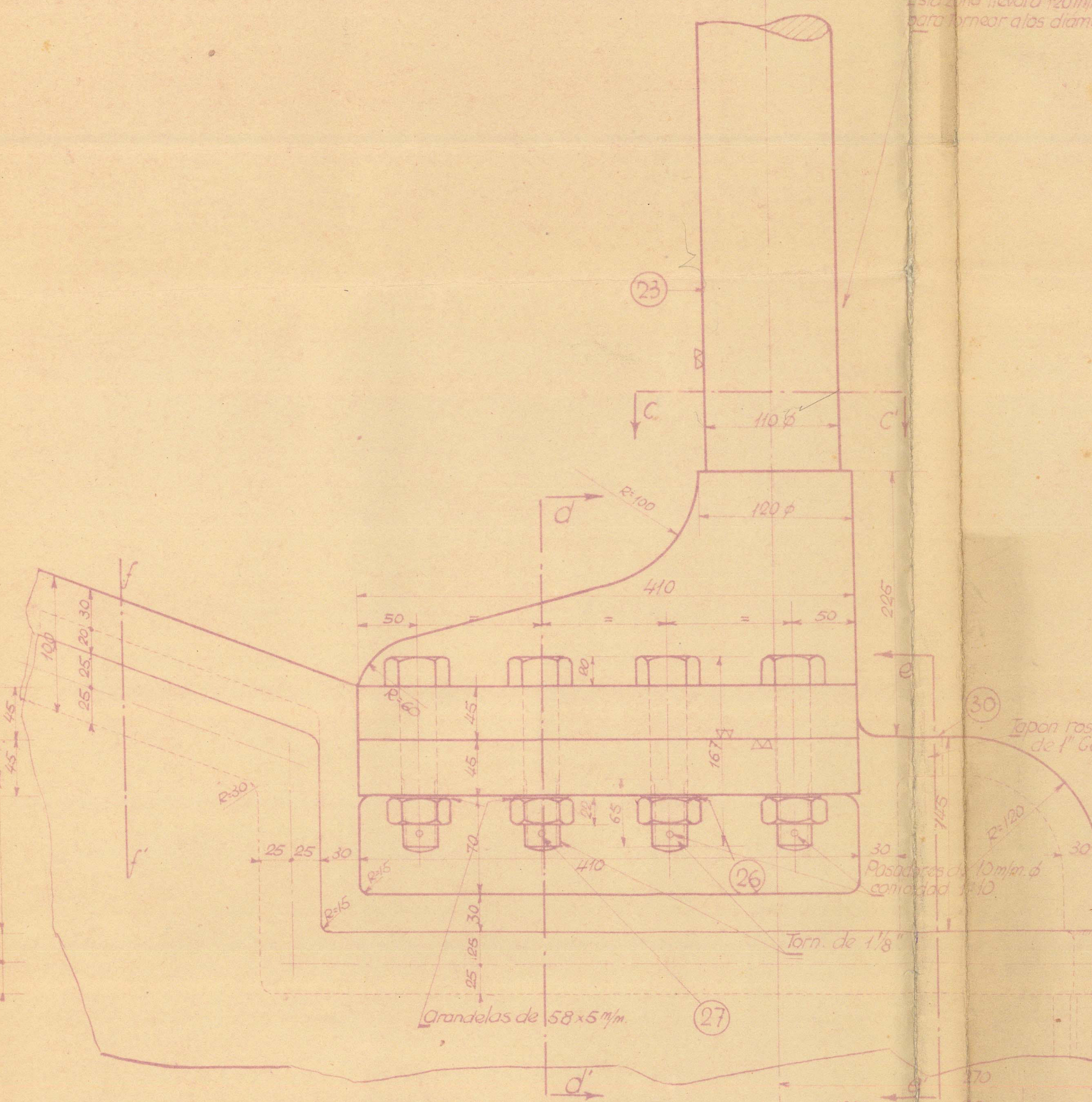
Arm 5



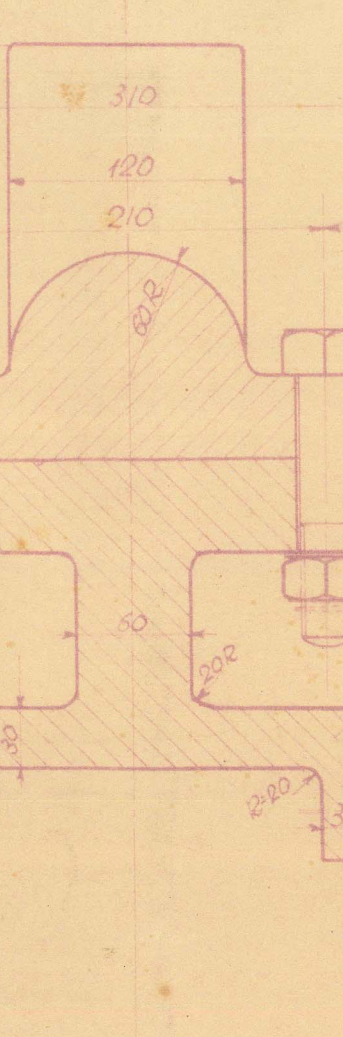
Arm 6



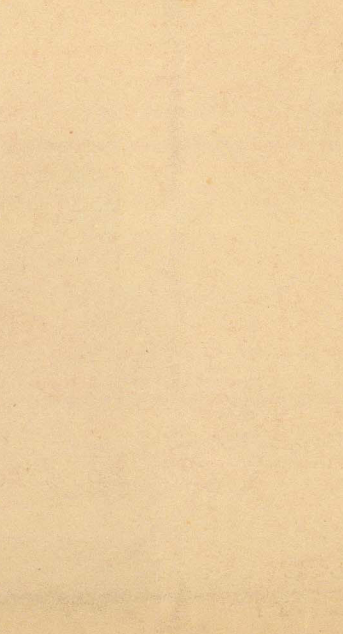
Arm 7



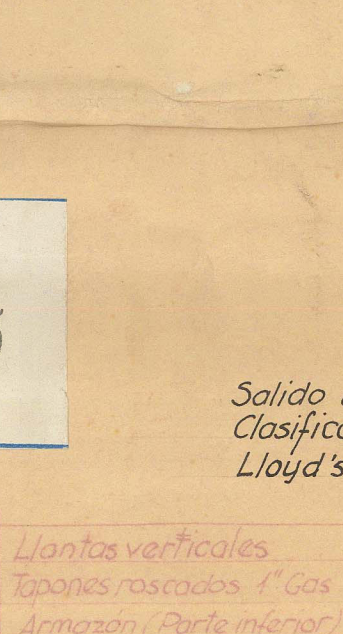
Sección d-d'



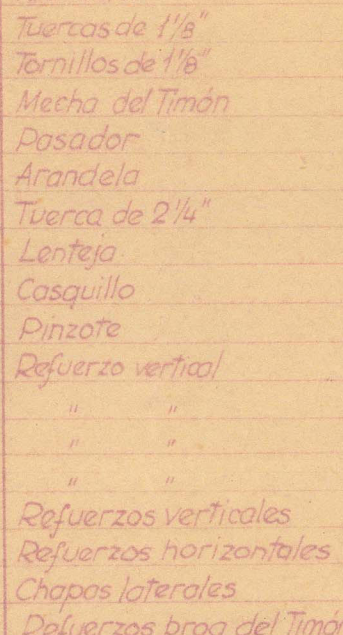
Sección e-e'



Sección f-f'



Sección g-g'



Sección h-h'



Sección i-i'



Plan approved
for Yard No. 5-6-8

Sgt. AU
10-1-45

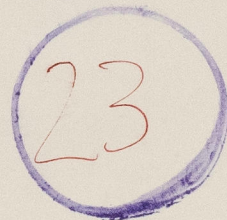
| | | | |
|----|-----------------------|---|-----------|
| 51 | Llaves verticales | 5 | Aluminado |
| 50 | Alavos, clavados 1/4" | 5 | Sinco |
| 23 | Arandelas 1/2" | 1 | Arandelas |
| 27 | Arandelas 1/2" | 1 | Arandelas |
| 27 | Arandelas 1/2" | 1 | Arandelas |
| 27 | Arandelas 1/2" | 1 | Arandelas |
| 27 | Arandelas 1/2" | 1 | Arandelas |
| 27 | Arandelas 1/2" | 1 | Arandelas |
| 27 | Arandelas 1/2" | 1 | Arandelas |
| 27 | Arandelas 1/2" | 1 | Arandelas |
| 27 | Arandelas 1/2" | 1 | Arandelas |
| 27 | Arandelas 1/2" | 1 | Arandelas |
| 27 | Arandelas 1/2" | 1 | Arandelas |
| 27 | Arandelas 1/2" | 1 | Arandelas |
| 27 | Arandelas 1/2" | 1 | Arandelas |
| 27 | Arandelas 1/2" | 1 | Arandelas |
| 27 | Arandelas 1/2" | 1 | Arandelas |
| 27 | Arandelas 1/2" | 1 | Arandelas |
| 27 | Arandelas 1/2" | 1 | Arandelas |
| 27 | Arandelas 1/2" | 1 | Arandelas |
| 27 | Arandelas 1/2" | 1 | Arandelas |
| 27 | Arandelas 1/2" | 1 | Arandelas |
| 27 | Arandelas 1/2" | 1 | Arandelas |
| 27 | Arandelas 1/2" | 1 | Arandelas |
| 27 | Arandelas 1/2" | 1 | Arandelas |
| 27 | Arandelas 1/2" | 1 | Arandelas |
| 27 | Arandelas 1/2" | 1 | Arandelas |
| 27 | Arandelas 1/2" | 1 | Arandelas |
| 27 | Arandelas 1/2" | 1 | Arandelas |
| 27 | Arandelas 1/2" | 1 | Arandelas |
| 27 | Arandelas 1/2" | 1 | Arandelas |
| 27 | Arandelas 1/2" | 1 | Arandelas |
| 27 | Arandelas 1/2" | 1 | Arandelas |
| 27 | Arandelas 1/2" | 1 | Arandelas |
| 27 | Arandelas 1/2" | 1 | Arandelas |
| 27 | Arandelas 1/2" | 1 | Arandelas |
| 27 | Arandelas 1/2" | 1 | Arandelas |
| 27 | Arandelas 1/2" | 1 | Arandelas |
| 27 | Arandelas 1/2" | 1 | Arandelas |
| 27 | Arandelas 1/2" | 1 | Arandelas |
| 27 | Arandelas 1/2" | 1 | Arandelas |
| 27 | Arandelas 1/2" | 1 | Arandelas |
| 27 | Arandelas 1/2" | 1 | Arandelas |
| 27 | Arandelas 1/2" | 1 | Arandelas |
| 27 | Arandelas 1/2" | 1 | Arandelas |
| 27 | Arandelas 1/2" | 1 | Arandelas |
| 27 | Arandelas 1/2" | 1 | Arandelas |
| 27 | Arandelas 1/2" | 1 | Arandelas |
| 27 | Arandelas 1/2" | 1 | Arandelas |
| 27 | Arandelas 1/2" | 1 | Arandelas |
| 27 | Arandelas 1/2" | 1 | Arandelas |
| 27 | Arandelas 1/2" | 1 | Arandelas |
| 27 | Arandelas 1/2" | 1 | Arandelas |
| 27 | Arandelas 1/2" | 1 | Arandelas |
| 27 | Arandelas 1/2" | 1 | Arandelas |
| 27 | Arandelas 1/2" | 1 | Arandelas |
| 27 | Arandelas 1/2" | 1 | Arandelas |
| 27 | Arandelas 1/2" | 1 | Arandelas |
| 27 | Arandelas 1/2" | 1 | Arandelas |
| 27 | Arandelas 1/2" | 1 | Arandelas |
| 27 | Arandelas 1/2" | 1 | Arandelas |
| 27 | Arandelas 1/2" | 1 | Arandelas |
| 27 | Arandelas 1/2" | 1 | Arandelas |
| 27 | Arandelas 1/2" | 1 | Arandelas |
| 27 | Arandelas 1/2" | 1 | Arandelas |
| 27 | Arandelas 1/2" | 1 | Arandelas |
| 27 | Arandelas 1/2" | 1 | Arandelas |
| 27 | Arandelas 1/2" | 1 | Arandelas |
| 27 | Arandelas 1/2" | 1 | Arandelas |
| 27 | Arandelas 1/2" | 1 | Arandelas |
| 27 | Arandelas 1/2" | 1 | Arandelas |
| 27 | Arandelas 1/2" | 1 | Arandelas |
| 27 | Arandelas 1/2" | 1 | Arandelas |
| 27 | Arandelas 1/2" | 1 | Arandelas |
| 27 | Arandelas 1/2" | 1 | Arandelas |
| 27 | Arandelas 1/2" | 1 | Arandelas |
| 27 | Arandelas 1/2" | 1 | Arandelas |
| 27 | Arandelas 1/2" | 1 | Arandelas |
| 27 | Arandelas 1/2" | 1 | Arandelas |
| 27 | Arandelas 1/2" | 1 | Arandelas |
| 27 | Arandelas 1/2" | 1 | Arandelas |
| 27 | Arandelas 1/2" | 1 | Arandelas |
| 27 | Arandelas 1/2" | 1 | Arandelas |
| 27 | Arandelas 1/2" | 1 | Arandelas |
| 27 | Arandelas 1/2" | 1 | Arandelas |
| 27 | Arandelas 1/2" | 1 | Arandelas |
| 27 | Arandelas 1/2" | 1 | Arandelas |
| 27 | Arandelas 1/2" | 1 | Arandelas |
| 27 | Arandelas 1/2" | 1 | Arandelas |
| 27 | Arandelas 1/2" | 1 | Arandelas |
| 27 | Arandelas 1/2" | 1 | Arandelas |
| 27 | Arandelas 1/2" | 1 | Arandelas |
| 27 | Arandelas 1/2" | 1 | Arandelas |
| 27 | Arandelas 1/2" | 1 | Arandelas |
| 27 | Arandelas 1/2" | 1 | Arandelas |
| 27 | Arandelas 1/2" | 1 | Arandelas |
| 27 | Arandelas 1/2" | 1 | Arandelas |
| 27 | Arandelas 1/2" | 1 | Arandelas |
| 27 | Arandelas 1/2" | 1 | Arandelas |
| 27 | Arandelas 1/2" | 1 | Arandelas |
| 27 | Arandelas 1/2" | 1 | Arandelas |
| 27 | Arandelas 1/2" | 1 | Arandelas |
| 27 | Arandelas 1/2" | 1 | Arandelas |
| 27 | Arandelas 1/2" | 1 | Arandelas |
| 27 | Arandelas 1/2" | 1 | Arandelas |
| 27 | Arandelas 1/2" | 1 | Arandelas |
| 27 | Arandelas 1/2" | 1 | Arandelas |
| 27 | Arandelas 1/2" | 1 | Arandelas |
| 27 | Arandelas 1/2" | 1 | Arandelas |
| 27 | Arandelas 1/2" | 1 | Arandelas |
| 27 | Arandelas 1/2" | 1 | Arandelas |
| 27 | Arandelas 1/2" | 1 | Arandelas |
| 27 | Arandelas 1/2" | 1 | Arandelas |
| 27 | Arandelas 1/2" | 1 | Arandelas |
| 27 | Arandelas 1/2" | 1 | Arandelas |
| 27 | Arandelas 1/2" | 1 | Arandelas |
| 27 | Arandelas 1/2" | 1 | Arandelas |
| 27 | Arandelas 1/2" | 1 | Arandelas |
| 27 | Arandelas 1/2" | 1 | Arandelas |
| 27 | Arandelas 1/2" | 1 | Arandelas |
| 27 | Arandelas 1/2" | 1 | Arandelas |
| 27 | Arandelas 1/2" | 1 | Arandelas |
| 27 | Arandelas 1/2" | 1 | Arandelas |
| 27 | Arandelas 1/2" | 1 | Arandelas |
| 27 | Arandelas 1/2" | 1 | Arandelas |
| 27 | Arandelas 1/2" | 1 | Arandelas |
| 27 | Arandelas 1/2" | 1 | Arandelas |
| 27 | Arandelas 1/2" | 1 | Arandelas |
| 27 | Arandelas 1/2" | 1 | Arandelas |
| 27 | Arandelas 1/2" | 1 | Arandelas |
| 27 | Arandelas 1/2" | 1 | Arandelas |
| 27 | Arandelas 1/2" | 1 | Arandelas |
| 27 | Arandelas 1/2" | 1 | Arandelas |
| 27 | Arandelas 1/2" | 1 | Arandelas |
| 27 | Arandelas 1/2" | 1 | Arandelas |
| 27 | Arandelas 1/2" | 1 | Arandelas |
| 27 | Arandelas 1/2" | 1 | Arandelas |
| 27 | Arandelas 1/2" | 1 | Arandelas |
| 27 | Arandelas 1/2" | 1 | Arandelas |
| 27 | Arandelas 1/2" | 1 | Arandelas |
| 27 | Arandelas 1/2" | 1 | Arandelas |
| 27 | Arandelas 1/2" | 1 | Arandelas |
| 27 | Arandelas 1/2" | 1 | Arandelas |
| 27 | Arandelas 1/2" | 1 | Arandelas |
| 27 | Arandelas 1/2" | 1 | Arandelas |
| 27 | Arandelas 1/2" | 1 | Arandelas |
| 27 | Arandelas 1/2" | 1 | Arandelas |
| 27 | Arandelas 1/2" | 1 | Arandelas |
| 27 | Arandelas 1/2" | 1 | Arandelas |
| 27 | Arandelas 1/2" | 1 | Arandelas |
| 27 | Arandelas 1/2" | 1 | Arandelas |
| 27 | Arandelas 1/2" | 1 | Arandelas |
| 27 | Arandelas 1/2" | 1 | Arandelas |
| 27 | Arandelas 1/2" | 1 | Arandelas |
| 27 | Arandelas 1/2" | 1 | Arandelas |
| 27 | Arandelas 1/2" | 1 | Arandelas |
| 27 | Arandelas 1/2" | 1 | Arandelas |
| 27 | Arandelas 1/2" | 1 | Arandelas |
| 27 | Arandelas 1/2" | 1 | Arandelas |
| 27 | Arandelas 1/2" | 1 | Arandelas |
| 27 | Arandelas 1/2" | 1 | Arandelas |
| 27 | Arandelas 1/2" | 1 | Arandelas |
| 27 | Arandelas 1/2" | 1 | Arandelas |
| 27 | Arandelas 1/2" | 1 | Arandelas |
| 27 | Arandelas 1/2" | 1 | Arandelas |
| 27 | Arandelas 1/2" | 1 | Arandelas |
| 27 | Arandelas 1/2" | 1 | Arandelas |
| 27 | Arandelas 1/2" | 1 | Arandelas |
| 27 | Arandelas 1/2" | 1 | Arandelas |
| 27 | Arandelas 1/2" | 1 | Arandelas |
| 27 | Arandelas 1/2" | 1 | Arandelas |
| 27 | Arandelas 1/2" | 1 | Arandelas |
| 27 | Arandelas 1/2" | 1 | Arandelas |
| 27 | Arandelas 1/2" | 1 | Arandelas |
| 27 | Arandelas 1/2" | 1 | Arandelas |
| 27 | Arandelas 1/2" | 1 | Arandelas |
| 27 | Arandelas 1/2" | 1 | Arandelas |
| 27 | Arandelas 1/2" | 1 | Arandelas |
| 27 | Arandelas 1/2" | 1 | Arandelas |
| 27 | Arandelas 1/2" | 1 | Arandelas |
| 27 | | | |

Sternfrane & Rudder

"Lio Lepe."



RECORDS DEPT.
LONDON



© 2021

Lloyd's Register
Foundation

011610-011612-011613