

Lloyd's Register of Shipping.

SURVEYS FOR FREEBOARD.

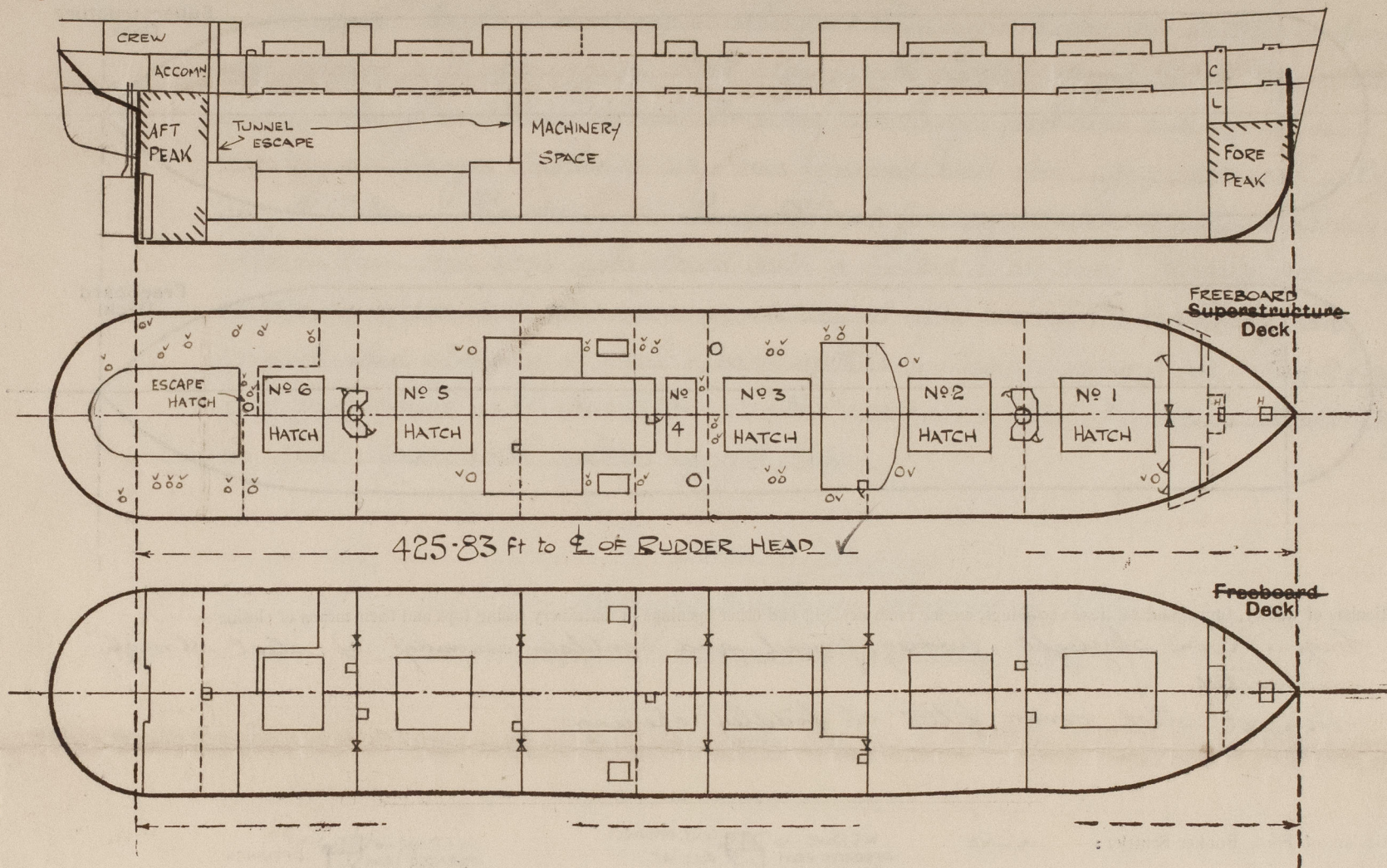
(CONDITIONS OF ASSIGNMENT.)

Index No. 36859
(For London Office only).
12 JUN 1942

33412

Ship's Name *EMPIRE SOUTHEY* *Ocean Liners* Port of Survey *Sunderland*
Official Number *169023* Surveyor's Signature *R. Wilson*
Nationality and Port of Registry *British, Sunderland* Date of Survey *While building*

Disposition and dimensions of superstructures, trunks, deckhouses and machinery casings to be inserted in the diagrams and tabular statement:—



Particulars of Superstructures, Trunks, Casings, Deckhouses.								
	Coaming	Plating	Stiffeners	Spacing	End Attachments of Stiffeners	Size of Openings	Height of Sills	Height of Casings
Peep Bulkheads in Tween Decks26"	.26"	5 x 3 x 42 O.A.	30"	JOINTER R.V. T.&B.	6'-6" x 4'-0" 5'-0" x 4'-0"	NO SILL 19"	✓
Raised Quarter Deck Bulkhead ...	✓							
Bridge, After Bulkhead ...	✓							
Bridge, Forward Bulkhead ...	✓							
Forecastle Bulkhead30"	.30"	4 x 3 x 36 O.A.	30"	JOINTER R.V. AT. B.	3'-5" x 2'-1" 3'-0" x 4'-1"	12"	6'-9" ✓
Trunk, Aft ...	✓							
Trunk, Forward ...	✓							
Exposed Machinery Casings on Freeboard or Raised Quarter Decks35"	.30"	3 1/2 x 3 x 40	31"	CONTINUOUS	4'-6" x 2'-2"	24"	7'-9 3/4" ✓
Exposed Machinery Casings on Superstructure Decks ...	✓							
Machinery Casings within Superstructures not fitted with Class I Closing Appliances ...	✓							
Deckhouses on Flush Deck Ships AFT	.34"	.25"	3 x 3 x 35 8 REV TO 3 x 3 x 35 30 TO 46	30 TO 46"	BKT. T.&B.	4'-6" x 2'-0"	24"	7'-6" ✓
	.30"	.26"	3 x 3 x 30	42"	JOINTER R.V. & B.KTS.	4'-6" x 2'-0"	24"	7'-6" A TO 8'-0" F ✓
Particulars of Closing Appliances (state if capable of being manipulated from both sides).								
Peep Bulkheads in Tween Decks36" plate secured by 3/4" bolts spaced 5 1/4" At bulkhead 87; .36" plate with 3/4" hook bolts @ 12" apart							
Raised Quarter Deck Bulkhead ...	✓							
Bridge, After Bulkhead ...	✓							
Bridge, Forward Bulkhead ...	✓							
Forecastle Bulkhead36" plate secured by 3/4" hook bolts spaced 12" apart. Hinged steel doors operated from both sides							
Exposed Machinery Casings on Freeboard or Raised Quarter Decks ...	Hinged steel doors operated from both sides							
Exposed Machinery Casings on Superstructure Decks ...	✓							
Machinery Casings within Superstructures not fitted with Class I Closing Appliances ...	✓							
Deckhouses on Flush Deck Ships ...	W.T. Steel doors operated from both sides							



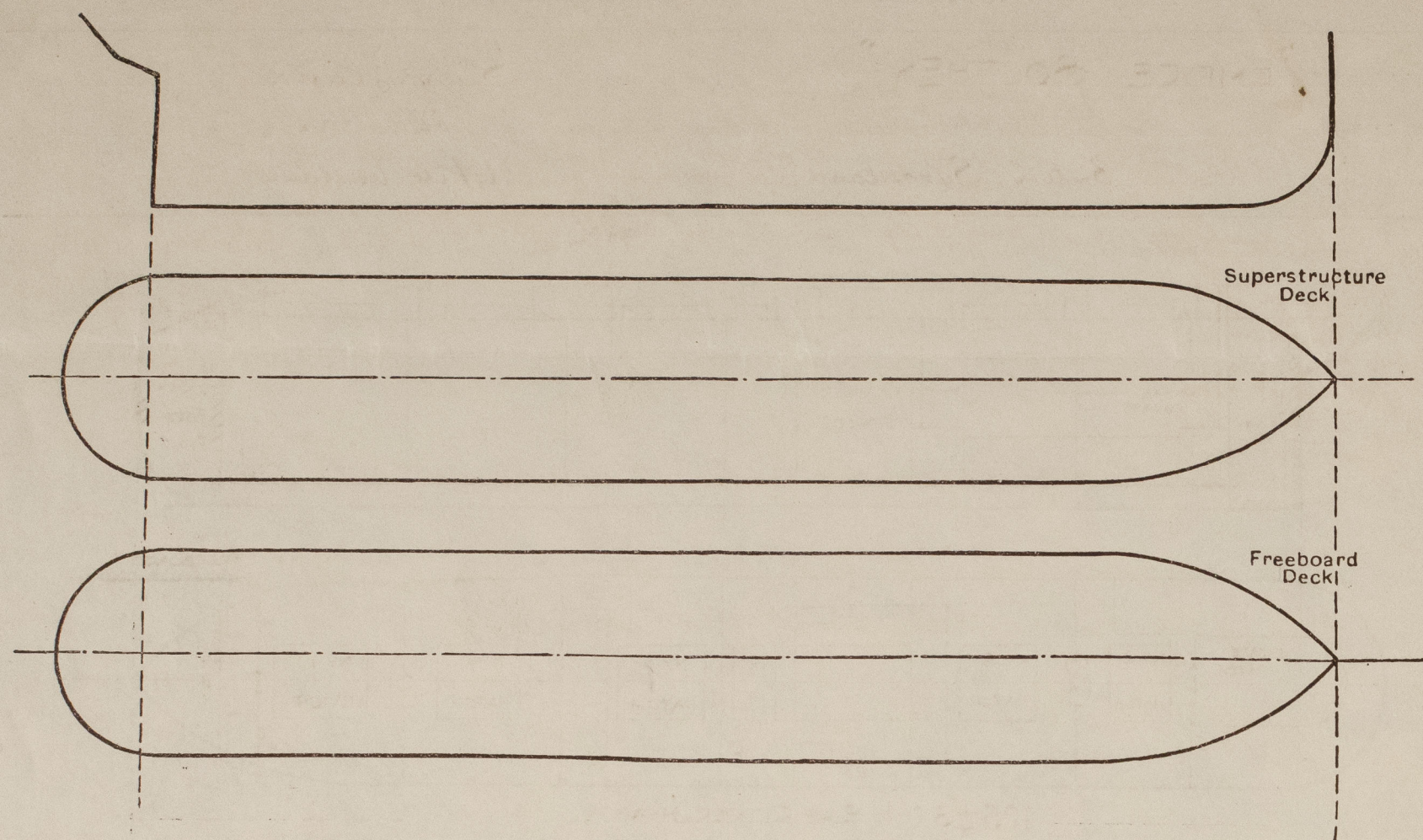
© 2021

Lloyd's Register
Foundation

011610 - 011618 - 0119 1/2

PARTICULARS OF PROTECTION TO OPENINGS, ETC.

The following diagrams should be used to indicate the positions of cargo and coaling hatchways, gangway, cargo and coaling ports, ventilators, companionways, etc., which would affect the seaworthiness of the ship:—



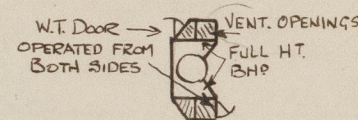
Particulars of fiddle, funnel and ventilator coamings, engine room skylight and other openings in machinery casing tops and their means of closing:—

Engine Room skylight, fiddle, funnel, and ventilator coamings of steel strongly constructed.

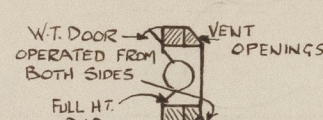
Hinged steel covers fitted at fiddle openings

Particulars of Flush Bunker Scuttles:—

NONE



MAIN MAST HOUSE



FORE MAST HOUSE

Particulars of Companionways:—

NONE

Particulars of Ventilators in exposed positions on freeboard and superstructure decks:—

1	Cowl vent 10" dia	coaming 34" x 32"	to steering gear
1	"	12 "	" 34" x 34" to accom.
4	"	18 "	" 34" x 40" to tween decks
4	"	12 "	" 34" x 34" to bunker
4	"	14 1/2 "	" 34" x 36" to hold
4	"	12 "	" 34" x 34" to tween decks
2	"	18 "	" 10" x 40" (stayed) to tween decks
1	"	18 "	" 36" x 40" to tween decks
2	"	15 "	" 34" x 36" cabin stove
7	"	6 "	" 34" x 30" accom
4	"	10 "	" 34" x 32 "
1	"	7 "	" 34" x 32" to refug. machine

GOOSENECK VENTS ON UPPER & FORE DECKS

3-5" dia C.I. G.N.V. to accom. 35" to lif

1-5" C.I. " " 4" to 36" "

Ventilators fitted with wood plugs and canvas covers.

FORECASTLE DECK:—

1	Cowl Vent 10" dia	coaming 36" x 32"	4" to 36" stove
2	"	6 "	" 36" x 30" "
2	"	8 "	" 36" x 30" "
1	Mushroom	22" Port	108" x 50" No 1 Hold.

Particulars of Air Pipes in exposed positions on freeboard, raised quarter, or superstructure decks:—

10-4" Dia. air pipes 33" high to lif C.I.
13-3" " " 33 " " " "
7-2 1/2 " " 33 " " " "

Air pipes fitted with wood plugs and canvas covers.

Particulars of Gangway Cargo and Coaling Ports:—

NONE

Hollybank.

Particulars of Scuppers and Sanitary Discharge Pipes:—

2-2" dia discharges from spaces under forecastle deck led to N.R. Valve in tween decks ✓
5-4" " " from houses above freeboard deck " " " " " " ✓
2-5" " " " " " " " " " " " " ✓
6-2" " " " " " " " " " " " " ✓
3-2 1/2" " " " " " " " " " " " " ✓
1-4" " discharge from W.C. on 2nd deck led through shell with S.D.N.R. Valve controlled from ✓
freeboard deck
1-2" dia scupper " " " " " " " " " " " " ✓
freeboard deck
1-2" dia waste " " " " " " " " " " " " ✓
freeboard deck
1-1 1/2" dia waste " " " " " " " " " " " " ✓
freeboard deck
12-2" dia scuppers from cargo tween decks led to bilges with self-closing cocks in E.R. only. ✓

Particulars of Side Scuttles:—

10" dia sidelights to crew's accommodation in after tween decks fitted with substantial hinged deadlights

Vertical distance of Sill of lowest Side Scuttle above top of keel

34' 3"

Particulars of Guard Rails:—

Upper deck:— 3'-9" high, 3 rods (chains in way of A.N.D. gear), stanchions spaced 5 ft to 6 ft apart.

Forecastle:— 3'-4" high, 2 rods (chains in way of A.N.D. gear).

Steel bulwark fitted in way of accommodation from fore end of Saloon House to after end of Engineer's House.

Particulars of Gangways, Lifelines, etc.:—

One 2" S.W. lifeline supplied, with fittings for same fitted P. & S.

Particulars of Freeing Arrangements.

	Length of Bulwark	Height of Bulwark	Size of Freeing Ports	Number each side	Area each side	Rule area each side
After Well AMIDSHIPS ...	156'-0"	3'-6"	6'-10" x 9"	3	15.3762	
Forward Well ...	✓					

State position of each freeing port ... (After Well:— AMIDSHIPS

(F. and A. position and height above deck edge) { Forward Well:— ✓

Abreast No 3 hatch, No 4 hatch and engine casing

State whether the freeing ports are fitted with shutters, bars, or rails, and give particulars of such:—

Bulwark slotted

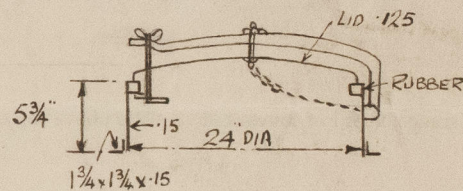
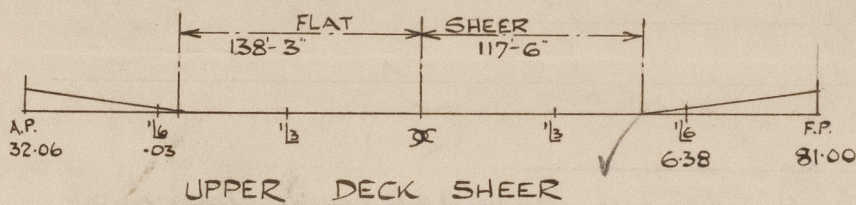
Additional area where sheer is less than standard. ✓

10-6" x 5" scuppers cut in stringer angle to drain freeboard deck.

PARTICULARS OF PROTECTION TO OPENINGS, ETC.

HATCHWAYS ON FREEBOARD AND SUPERSTRUCTURE DECKS.									
Description of Hatchway	Nº1	Nº2	Nº5. 3, 5 & 6	Nº4	BUNKER HATCHES	
Dimensions of Hatchway	3'6" x 20'	3'1" x 20'	3'1" x 20'	12'4" x 20'	15'6" x 5'0"	
COAMINGS	{	Height above Deck	...	30"	30"	30"	30"	30"	HATCH TO STORE FORWARD 4'0" x 3'0" 9 x 3 1/2 x 50 L coaming, covers 2 3/8" cleats, 2 tarpaulins ✓
		Thickness45	.45 ✓	.44 ✓	.46	.44	
		Sides44	.44 ✓	.44 ✓	.44 ✓	.44	
		Ends44	.44 ✓	.44 ✓	.44 ✓	.44	
Stiffeners	...	7 x 3 x 44 L	8 x 3 x 44 L	8 x 3 x 44 L	7 x 3 x 44 L	7 x 3 x 38 L			
Brackets, Stays	...	✓	3-6 x 3 x 38 L	3-6 x 3 x 38 L	3-6 x 3 x 38 L	1-6 x 3 x 38 L	✓		
HATCH BEAMS	{	Number	...	5	5	5	1		HATCH TO CHAIN LOCKER 2'6" x 2'0" 9 x 3 1/2 x 50 L coaming, covers 2 3/8" cleats, 2 tarpaulins. ✓
		Spacing	...	equal	equal	equal	equal		
		Scantling and Sketch	...	5 x 3 x 38	5 x 3 x 38	5 x 3 x 38	5 x 3 x 38		
		Bearing Surface	...	18 1/2 x 36	16 3/4 x 36	16 3/4 x 36	19 1/2 x 38		
...	...	5 x 3 x 38	5 x 3 x 38	5 x 3 x 38	5 x 3 x 38				
FORE AND AFTERS	{	Number	...						BUNKER HATCH ON CASING TOP 20'0" x 5'2" coaming 9 x 40, covers 2 3/8" cleats, 2 tarpaulins ✓
		Spacing	...						
		Unsupported Lengths	...						
		Scantling and Sketch	...	NONE	✓	✓	✓	✓	
Bearing Surface	...								
HATCH COVERS	{	Material	...	W.W.	W.W.	W.W.	W.W.	W.W.	
		Thickness	...	2 3/8 ✓	2 3/8	2 3/8	2 3/8	2 3/8	
		How fitted	...	F & A ✓	F & A	F & A	F & A	THWART?	
		Bearing Surface	...	5"	5"	5"	5"	3" ✓	
Spacing of Cleats	...	24"	20"	20"	20"	20"			
Number of Tarpaulins	...	2	20	20	20	20			
<p>*Are wood fore and afters steel shod at all bearing surfaces? ✓</p> <p>Are battens and wedges efficient and in good condition? yes</p> <p>Are tarpaulins in good condition and in accordance with rule requirements? yes</p> <p>Are lashings provided in accordance with rule requirements? locking bars fitted at all hatches</p>									

Particulars of any special features:—



The vessel has been built to scantlings as per plans approved 5/6/41 in order to obtain a draught in excess of that permitted by the Rules for a C.S.S. vessel having a tonnage opening. Pre-fabricated materials have been embodied in the vessel.

Endorsement at first survey and at surveys for renewal of Certificate:—

The fittings and appliances are in accordance with the particulars shown on this form (or as now modified) and are in good condition.