

Lloyd's Register of Shipping.

Index No. 43427
(For London Office only.)

SURVEYS FOR FREEBOARD.

DONA SELINA (CONDITIONS OF ASSIGNMENT.)

Ship's Name *EX* ASTRID ONSTAD

Port of Survey Gothenburg

Official Number

14686

Surveyor's Signature

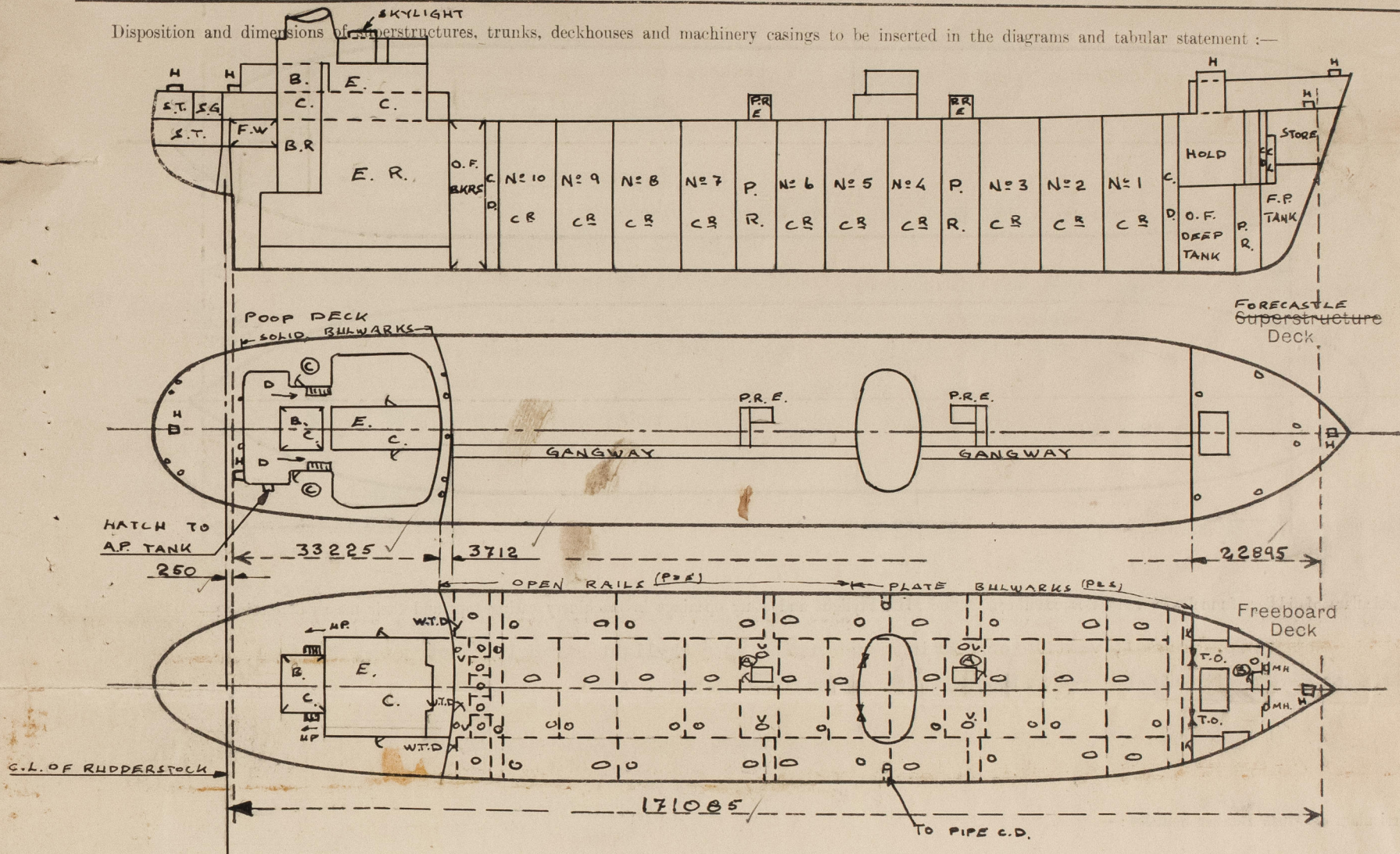
Ham. R. S.

Nationality and Port of Registry ~~Swedish, Kungsbacka~~

Liberian Monrovia

Date of Survey During construction

Disposition and dimensions of superstructures, trunks, deckhouses and machinery casings to be inserted in the diagrams and tabular statement:—



Particulars of Superstructures, Trunks, Casings, Deckhouses.

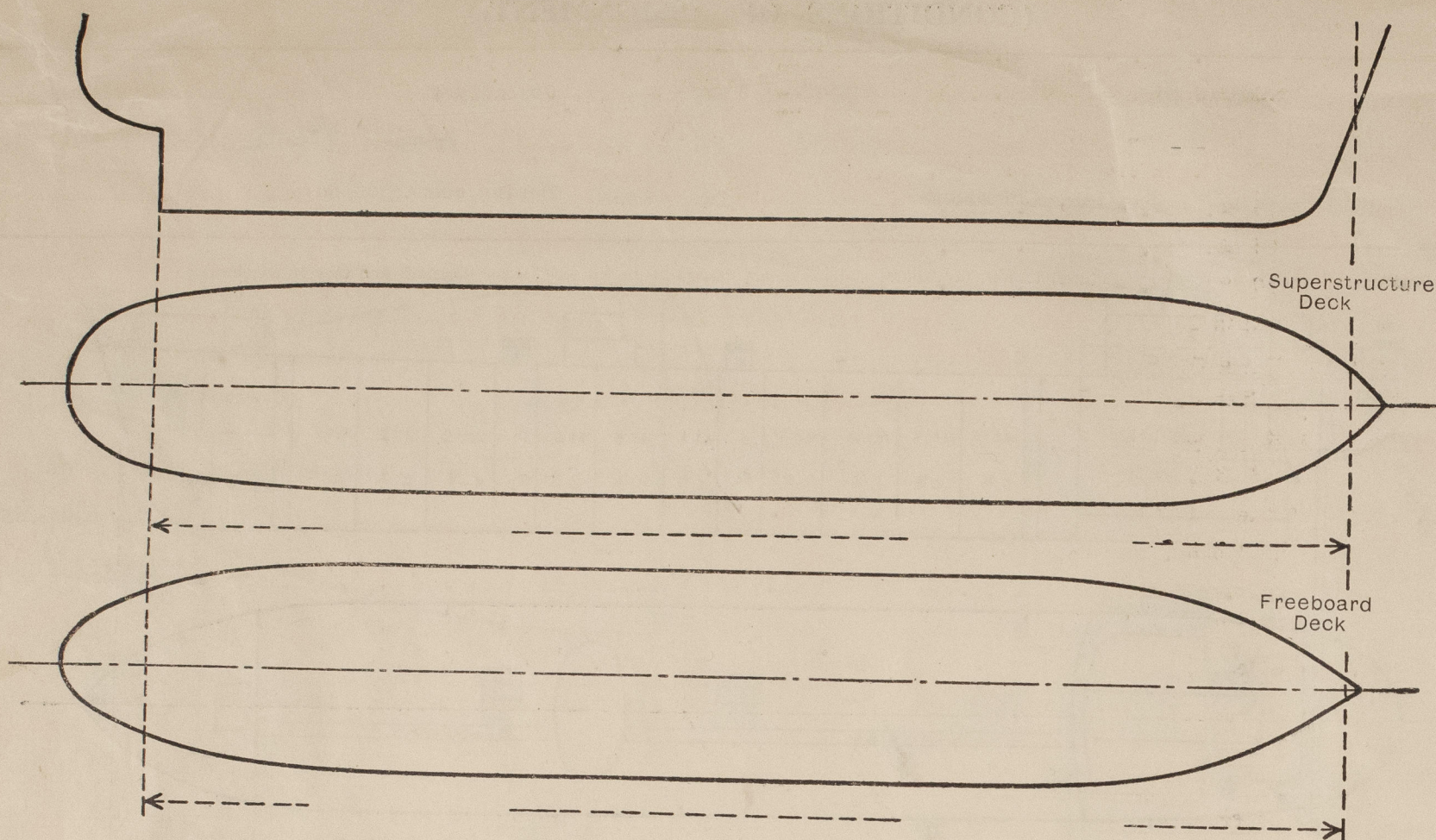
	Coaming MM.	Plating MM.	Stiffeners MM.	Spacing MM.	End Attachments of Stiffeners	Size of Openings MM.	Height of Sills MM.	Height of Casings MM.
Poop Bulkhead, Centre...	11.0	11.0	230x100x14 & 125x12 welded to flange.	700	Welded top and bottom	1280 x 800	760	2440
Poop Bulkhead, Sides	11.0	11.0	230x100x14	750	Welded top and bottom	2 & 1280x650	760	2440
Bridge, After Bulkhead	---	---	---	---	---	---	---	---
Bridge, Forward Bulkhead	---	---	---	---	---	---	---	---
Forecastle Bulkhead	8.0	8.0	80x65x8	780	Welded top and bottom	2 & 1580x610 2 & Full height x 950	450	2400
Trunk, Aft	---	---	---	---	---	---	---	---
Trunk, Forward	---	---	---	---	---	---	---	---
Exposed Machinery Casings on Freeboard or Raised Quarter Decks	---	---	---	---	---	---	---	---
Exposed Machinery Casings on Superstructure Decks	Front 7.5 Sides 6.5	7.5 6.5	100x75x8 100x75x8	660 - 800 825	Top: Riveted Btm: None	None None	---	2440
Machinery Casings within Superstructures not fitted with Class I Closing Appliances	---	---	---	---	---	---	---	---
Pump Room Entrances (2)	9.0	9.0	100x75x8	970	Welded top and bottom	1560x610	1800	3420

Particulars of Closing Appliances (state if capable of being manipulated from both sides).

Poop Bulkhead, Centre...	Hinged steel watertight door, operated both sides. ✓
Poop Bulkhead, Sides	Hinged steel watertight doors, operated both sides. ✓
Bridge, After Bulkhead	---
Bridge, Forward Bulkhead	---
Forecastle Bulkhead	Portable steel plates, secured by hook bolts, spaced approx. 300 mm. apart, and Hinged steel watertight doors, operated both sides ✓
Exposed Machinery Casings on Freeboard or Raised Quarter Decks	---
Exposed Machinery Casings on Superstructure Decks	No openings ✓
Machinery Casings within Superstructures not fitted with Class I Closing Appliances	---
Pump Room Entrance (2)	Hinged steel watertight door, operated both sides ✓

PARTICULARS OF PROTECTION TO OPENINGS, ETC.

The following diagrams should be used to indicate the positions of cargo and coaling hatchways, gangway, cargo and coaling ports, ventilators, companionways, etc., which would affect the seaworthiness of the ship:—



Particulars of fiddle, funnel and ventilator coamings, engine room skylight and other openings in machinery casing tops and their means of closing:—

Motorship.— Funnel, ventilator coamings and engine room skylight strongly constructed of steel, Skylight fitted with hinged steel flaps with strong bullseye lights.

Particulars of Flush Bunker Scuttles:—

None fitted.

Particulars of Companionways:—

(A) Strong steel pumproom entrances on upper deck with hinged steel watertight doors operated both sides, 1560 x 610 mm., sill 1800. Steel skylights fitted on top with hinged steel flaps with strong bullseye lights (See also Page 1 - Superstructures, etc.).

(B) Forward pumproom entrance inside forecastle strongly constructed of steel with hinged steel watertight door, operated both sides, 1560 x 610 mm., sill 460 mm.

(C) Hinged wood doors, operated both sides, 1450 x 710 mm., sill 460 mm.

Particulars of Ventilators in exposed positions on freeboard and superstructure decks:—

Forecastle deck:

2 a 300 mm. dia. x 10.5 - 1130 mm. high (efficiently stayed),

2 a 300 mm. dia. x 9.5 - 915 mm. high,

1 a 400 mm. dia. x 11.5 - 1030 mm. high (efficiently stayed),

2 a 450 mm. dia. x 12.0 - 1150 mm. high (efficiently stayed),

Upper deck:

4 a 905/1200 mm. dia. x 13 to 10 - 7000 mm. high (derrick posts) (efficiently stayed),

2 a 700 mm. dia. x 13.0 - 5800 mm. high (efficiently stayed),

Poop deck:

4 a 225 mm. dia. x 10.5 - 1130 mm. high (efficiently stayed),

2 a 300 mm. dia. x 10.5 - 1130 mm. high (efficiently stayed),

1 a 300 mm. dia. x 10.5 - 3600 mm. high (efficiently stayed),

1 a 400 mm. dia. x 11.0 - 1550 mm. high (efficiently stayed),

2 a 400 mm. dia. x 11.5 - 1030 mm. high (efficiently stayed),

4 a 100 mm. dia. goose neck ventilators, 915 mm. to opening.

Ventilators provided with steel cover plates and canvas covers.

Dona Selina Astrid Enstad.

Particulars of Air Pipes in exposed positions on freeboard, raised quarter, or superstructure decks:—

Forecastle decks:

2 a 65 mm. dia. - 900 mm. high,

5 a 100 mm. dia. - 900 mm. high,

Upper deck:

4 a 125 mm. dia. - 2200 mm. high (efficiently stayed),

3 a 75 mm. dia. - 2200 mm. high (efficiently stayed),

Poop deck:

4 a 100 mm. dia. - 900 mm. high,

7 a 75 mm. dia. - 900 mm. high,

3 a 65 mm. dia. - 900 mm. high,

3 a 50 mm. dia. - 900 mm. high.

Air pipes provided with wire gauzes as necessary and wood plugs in addition to canvas covers.

Particulars of Gangway Cargo and Coaling Ports:—

None fitted.

Particulars of Scuppers and Sanitary Discharge Pipes:—

2 a 2" dia. scuppers (port and starboard) from steering gear room led overboard approx. 1600 mm. above L.W.L. and fitted with brass non-return storm valves.

2" & 4" diam. sanitary discharges and scuppers (port & starboard) from poop 'tween deck and poop house led overboard approx. 500 mm. above L.W.L. and fitted with brass non-return storm valves.

2" & 4" dia. sanitary discharges and scuppers (port & starboard) from bridge houses led overboard approx. 400 mm. above L.W.L. and fitted with brass non-return storm valves.

1.1/4" and 2" dia. scuppers from store room aft and wash rooms in poop 'tween deck space led to engine room bilges (port and starboard) and fitted with water traps.

Particulars of Side Scuttles:—

Below freeboard deck: None

Above freeboard deck: In poop: 21 (p) and 28 (s) at 10" diameter, In fcle: 3 (p) and 2 (s) at 10" diameter.

All with opening gun metal side scuttles with hinged malleable cast iron deadlights.

Vertical distance of Sill of lowest Side Scuttle above top of keel: About 14,400 Metres.

Particulars of Guard Rails:—

On forecastle, after part of poop and after part of upper deck: 1080 mm. high, 3 rails, stanchions spaced 150 x 75 x 1450 mm. apart. Stay on every third.

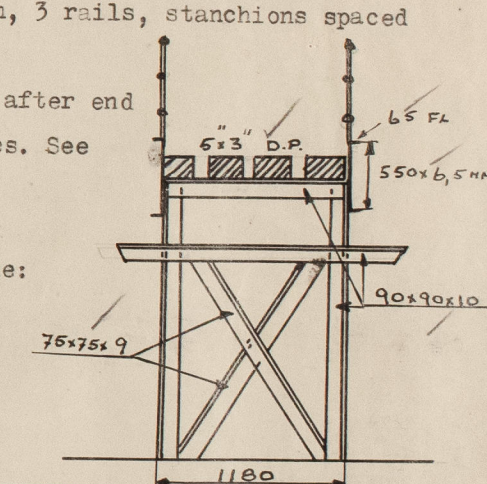
Bulwarks on forward portion of upper deck extending from after end of bridge house to forecastle front and on poop deck abreast houses. See sketch, and also freeing arrangements.

Particulars of Gangways, Lifelines, etc.:—

Fore and aft gangway between poop and bridge and between bridge and forecastle:

2440 mm. above upper deck. Fore and aft bracing in way fore and main mast.

Guard rails with 3 rods 1080 mm. high and stanchions spaced about 1500 mm. apart.



Particulars of Freeing Arrangements.

	Length of Bulwark	Height of Bulwark	Size of Freeing Ports	Number each side	Area each side	Rule area each side
Upper deck forward	...	1060	Continuous opening 50 mm. and open at the aft end			
Poop deck abreast houses	...	1060	Continuous opening 100 mm. and open at aft end. Ladderways forward end.			

State position of each freeing port ... (F. and A. position and height above deck edge)

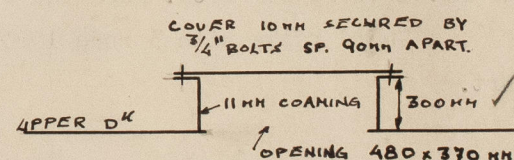
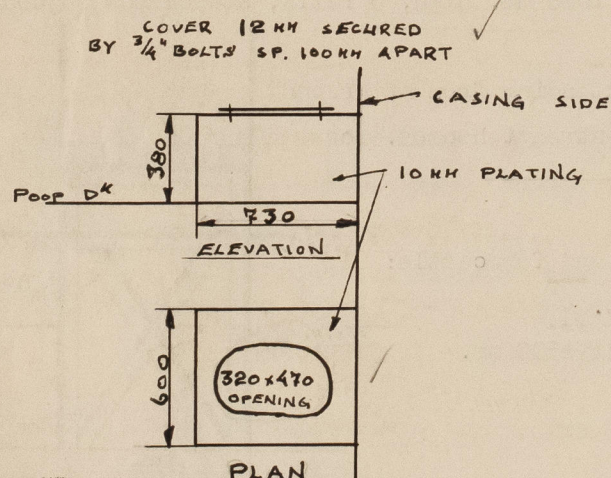
State whether the freeing ports are fitted with shutters, bars, or rails, and give particulars of such:—

Additional area where sheer is less than standard.

PARTICULARS OF PROTECTION TO OPENINGS, ETC.

HATCHWAYS ON FREEBOARD AND SUPERSTRUCTURE DECKS.									
Upper deck Poop deck Forecastle deck									
Description of Hatchway	Main Cargo Hatches 22 a	Circ. hatches to tanks & fore. hold 29 a	To Peak Store	Gas Store	Store Room aft	Counter Space	Store Room forward	Cargo Hold	
Dimensions of Hatchway	1560x660	640 dia.	1220x1220	2a350x450	1190x950	940x860	910x750	2055x4700	
COAMINGS	Height above Deck	820	255	235	460	235	610	830	
	Thickness	10 & eff. stiffened	10	11	9	11	10	9	
	Stiffeners	---	---	---	---	---	---	75x65x9	
	Brackets, Stays	---	---	---	---	---	---	spaced 710 mm. Trunked	
HATCH BEAMS	Number	---	---	---	---	---	---	---	
	Spacing	---	---	---	---	---	---	---	
	Scantling and Sketch	---	---	---	---	---	---	---	
	Bearing Surface	---	---	---	---	---	---	---	
FORE AND AFTERS	Number	---	---	---	---	---	---	---	
	Spacing	---	---	---	---	---	---	---	
	Unsupported Lengths	---	---	---	---	---	---	---	
	Scantling* and Sketch	---	---	---	---	---	---	---	
HATCH COVERS	Material	O.T. Steel	O.T. Steel	Wood	Steel	W.T. Steel	W.T. Steel	W.T. Steel	
	Thickness	10.0	12.0	2 1/2"	12 mm.	9	9	9	
	How fitted	2 hinges	2 hinges	F-A	Manhole covers 3/4"	2 hinges	2 hinges	2 hinges	
	Bearing Surface	6 toggles	4 toggles	65	bolts and spaced 100 mm. apart	4 toggles	4 toggles	2 toggles	
Spacing of Cleats	---	---	---	---	---	---	---	---	
Number of Tarpaulins	---	---	24	---	---	---	---	---	
*Are wood fore and afters steel shod at all bearing surfaces? --- Are battens and wedges efficient and in good condition? Yes ✓ Are tarpaulins in good condition and in accordance with rule requirements? Yes ✓ Are lashings provided in accordance with rule requirements? ---									

Particulars of any special features:—



Access to after peak tank:

Hatch Forward hold cargo hatch trunk within superstructure not fitted with Class 1 closing appliances.
 trunk
 forward Plating 9 mm. thick with vertical stiffeners 75x65x9 T, spaced 710 mm. apart and no end attachment. ✓

Access to sanitary pipe and scupper cofferdams amidsh.



© 2021

Lloyd's Register Foundation