

Lloyd's Register of Shipping.

SURVEYS FOR FREEBOARD.

(CONDITIONS OF ASSIGNMENT.)

 Index No. _____
 (For London Office only).

12 JUN 1943

Ship's Name "VATNAJÖKULL"

Port of Survey Stockholm

Official Number

Surveyor's Signature

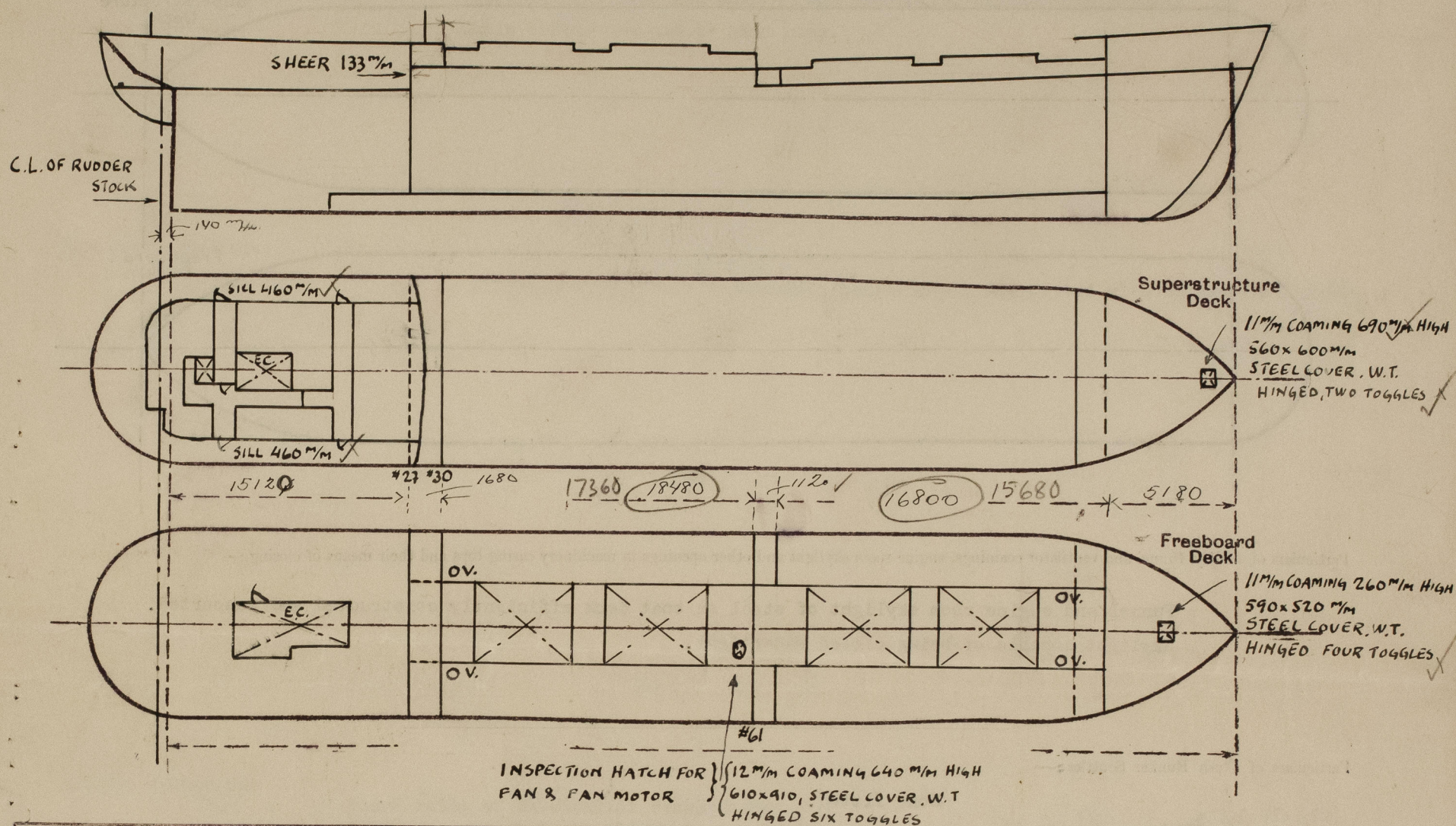
H. O. Albertson

Nationality and Port of Registry Icelandic; Reykjavik

Date of Survey

While building.

Disposition and dimensions of superstructures, trunks, deckhouses and machinery casings to be inserted in the diagrams and tabular statement:—



Particulars of Superstructures, Trunks, Casings, Deckhouses.

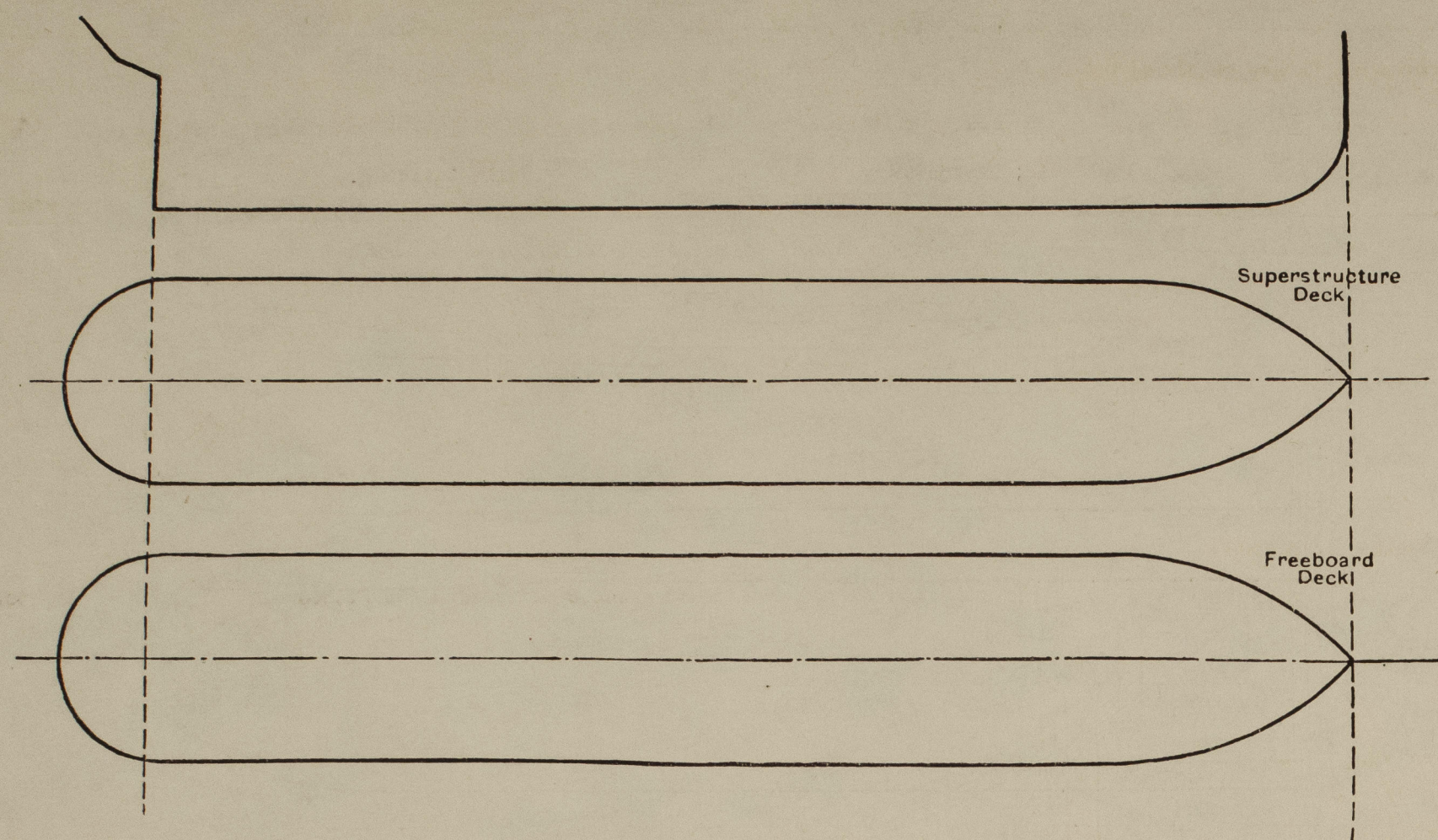
	Coaming	Plating mm	Stiffeners mm	Spacing mm	End Attachments of Stiffeners	Size of Openings mm	Height of Sills mm	Height of Casings mm
lower part								
Poop Bulkhead ... Fr.25 ...		7	135x65x9.5 L	725/635	bracket top cont. btm.	None	-	1100
Raised Quarter Deck Bulkhead Fr.61		8	100x75x8 L	700	None	None	-	1220
Poop bhd. upper part								
Bridge Bulkhead ... Fr.30		8	75x12 L	1000	None	830 x 610	75	1100
Bridge, Forward Bulkhead ...								
Forecastle Bulkhead ...		7.5	75x8 L	630	None	1500 x 590	420	2130
Trunk, Aft ...								
Trunk, Forward on main deck ...		7.5 sides	75x75x8 L		brackets top			
Machinery Casings on Freeboard Deck ...		8.0 top	100x75x8 L	560	none btm.	None	-	660
Machinery Casings on Superstructure Deck ...		6.5	75x75x8 L	560	cont.&beam	1500 x 720	380	2290
Machinery Casings within Superstructures not fitted with Class I Closing Appliances ...		6.5	90x70x7 L	560	top, beam btm	None	-	2275
Deckhouses on Flush Deck Ships ...			65x65x8 L		cont. top, cont.&beam btm.			

Particulars of Closing Appliances (state if capable of being manipulated from both sides).

Poop Bulkhead ...	No openings lower part. Steel doors, hinged, two toggles, W.T., upper part.
Raised Quarter Deck Bulkhead ...	No openings
Bridge, After Bulkhead ...	
Bridge, Forward Bulkhead ...	
Forecastle Bulkhead ...	Steel doors, hinged, operable from both sides.
Machinery Casings on Freeboard Deck ...	Steel doors, hinged, operable from both sides.
Machinery Casings on Superstructure Decks ...	No openings
Machinery Casings within Superstructures not fitted with Class I Closing Appliances ...	
Deckhouses on Flush Deck Ships ...	

PARTICULARS OF PROTECTION TO OPENINGS, ETC.

The following diagrams should be used to indicate the positions of cargo and coaling hatchways, gangway, cargo and coaling ports, ventilators, companionways, etc., which would affect the seaworthiness of the ship :—



Particulars of fiddle, funnel and ventilator coamings, engine room skylight and other openings in machinery casing tops and their means of closing :—

Funnel and engine room skylight of steel on boat deck efficiently constructed and supported.
Skylight capable of being closed watertight.

Particulars of Flush Bunker Scuttles :—

None fitted.

Particulars of Companionways :—

Entrance to accommodation aft through steel deck house on poop deck.
Steel doors with 460 m/m sill above sheathing on steel deck. Doors operable from both sides.
Entrance to store in forecastle through steel hatch on forecastle deck. See sketch.

Particulars of Ventilators in exposed positions on freeboard and superstructure decks :—

All ventilator coamings more than 915 m/m high efficiently constructed and supported and fitted with means for closing.

Particulars of Air Pipes in exposed positions on freeboard, raised quarter, or superstructure decks :—

All air pipes on R.Q. deck more than 850 m/m high of goose neck type of steel and fitted with means for closing.

Particulars of Gangway Cargo and Coaling Ports :—

None fitted.

Vatnafokull

Particulars of Scuppers and Sanitary Discharge Pipes :—

Scuppers and sanitary discharges from tween deck spaces in poop are led to ship's sides above load water line and fitted with non-return valves.

Scuppers from poop deck spaces are led to ship's sides above main deck and fitted with non-return valves.

Scuppers from steering engine room are led to engine room bilges.

Chain locker drained by hand pump.

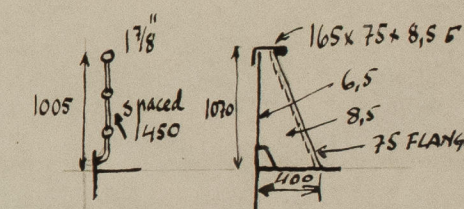
Particulars of Side Scuttles :—

All side scuttles of substantial construction and fitted with hinged dead lights.

Vertical distance of Sill of lowest Side Scuttle above top of keel About 6000 m/m

Particulars of Guard Rails :—

Guard rails of substantial construction on forecastle, bulwark elsewhere.



Particulars of Gangways, Lifelines, etc. :—

Arrangements for efficient lifelines are fitted in the forward well.

Particulars of Freeing Arrangements.						
	Length of Bulwark m.	Height of Bulwark mm.	Size of Freeing Ports mm.	Number each side	Area each side m ²	Rule area each side m ²
After Well poop deck	16.940	1070	180 x 970	4	0.69	0.56
R.Q. deck	18.480	1070	A, B, C, and D	4	1.19	1.19
Forward Well Main dk.	16.800	1070	E, F, G, and H	4	1.14	1.12
State position of each freeing port ... (F. and A. position and height above deck edge)						
State whether the freeing ports are fitted with shutters, bars, or rails, and give particulars of such :—						
Additional area where sheer is less than standard.						
R.Q. deck:—						
Main deck:—						

PARTICULARS OF PROTECTION TO OPENINGS, ETC.

		HATCHWAYS ON FREEBOARD AND SUPERSTRUCTURE DECKS.				
		Main Deck		R.Q. Deck		
Description of Hatchway	...	1	2	3	4	
Dimensions of Hatchway	... mm., ...	5600 x 3800	5600 x 3800	5600 x 3800	5600 x 3800	12.47'
COAMINGS	Height above Deck mm...	870				
	Thickness { Sides mm ...	11				
	{ Ends mm ...	11				
	Stiffeners ...	As per approved plan. ?				
	Brackets, Stays ...	4	"-"			
HATCH BEAMS	Number ...		2			
	Spacing ... mm...		1866	✓ 6' 12"		
	Scantling and Sketch ...					
	Bearing Surface mm ...		320	✓		
FORE AND AFTERS	Number ...					
	Spacing ...					
	Unsupported Lengths ...					
	Scantling* and Sketch ...					
	Bearing Surface ...					
HATCH COVERS	Material ...		Wood	✓		
	Thickness ...		75	✓		
	How fitted (mm) ...		F - A	✓		
	Bearing Surface ...		75	✓		
Spacing of Cleats	...		590	✓		
Number of Tarpaulins	...		2	✓		

*Are wood fore and afters steel shod at all bearing surfaces? ☒

Are battens and wedges efficient and in good condition? **Yes** ☒

Are tarpaulins in good condition and in accordance with rule requirements? **Yes** ☒

Are lashings provided in accordance with rule requirements? **Yes** ☒

Particulars of any special features:—

Timber deck cargo freeboard is requested.

Fitting for uprights spaced max. 3050 m/m.

Eye plates welded to sheerstrake and spaced max. 3050 m/m. ✓

End lashings not more than 1.5 m. from bulkheads. ✓

The centre girder is watertight for the midship 1/2 length.

Meaning?

Endorsement at first survey and at surveys for renewal of Certificate :—

The fittings and appliances are in accordance with the particulars shown on this form (or as now modified) and are in good condition.