

Form LL. 4.C. Revised

# THE BRITISH CORPORATION REGISTER OF SHIPPING AND AIRCRAFT

"MONT SANDRA" SURVEY FOR FREEBOARD

STEAMER, ~~TANKER~~, ~~SAILER~~: EX ALEXANDRA PARK ~~WITH~~ WITHOUT TIMBER DECK CARGO

Nationality BRITISH Builders' Name and No. of Ship UNITED SHIPYARDS LTD MONTREAL P.Q. N° 42.

Port of Registry MONTREAL Owners PARK STEAMSHIP CO LTD. MONTREAL

Official Number 175619 (MGRS) MONTREAL SHIPPING CO LTD. MONTREAL.

Gross Tonnage 7159 Port and Date of survey MONTREAL DURING CONSTRUCTION.

Date of Build DEC 1944 Name of Surveyor ALEX PUGHIN.

Particulars of Classification BS\* (WITH FREEBOARD) Names of Sister Ships "FORT REMY," "SUNALTA PARK" "NORANDA PARK"

Type of Superstructures FLUSH DECK.

Trade of Ship

Service Endorsement if any

SUMMER FREEBOARD recommended amidships from centre of disc to top of deck line, (.....wood.....steel)				
TROPICAL FRESH WATER LINE	above	centre of disc	13 1/2"	Corresponding Freeboard 10'-6 1/2"
FRESH WATER LINE	"	"	4"	9-5"
TROPICAL LINE	"	"	6 1/2"	9-11 1/2"
WINTER LINE	below	"	6 1/2"	10'-0"
WINTER NORTH ATLANTIC LINE	"	"	-	11'-1"

SUMMER TIMBER FREEBOARD recommended amidships from top of deck line				
TROPICAL FRESH WATER	Timber line	above	L.S.	Corresponding Freeboard
FRESH WATER	"	"	"	"
TROPICAL	"	"	"	"
WINTER	"	below	"	"
WINTER NORTH ATLANTIC	"	"	"	"

Number of years recommended for load line certificate

The Freeboard Report has been compared with the approved plans and found in order.

The scantlings and protective arrangements being in accordance with the Load Line Rules it is submitted that the freeboards be assigned

Chief Surveyor

Passed at a meeting of the Committee of Management of the British Corporation Register of Shipping and Aircraft

on the 7th. February 1945.



© 2021

Lloyd's Register Foundation

Secretary

011595-011602-0130 '18

2415

## COMPUTATION OF FREEBOARD

Length on summer load line  $417'-6"$  Moulded Breadth  $56'-10\frac{1}{2}"$  Moulded Depth  $37'-4"$  Depth of Keel  $3\frac{1}{4}"$   
 Moulded displacement (ex bossing) at moulded draught of 85 per cent. of moulded depth 16630 Tons  
 Co-efficient of fineness for use with tables  $\frac{\Delta \times 35}{L \times B \times D \times 85} = .7724$   
 Displacement and tons per inch immersion in salt water at summer load line 13770 @ 48.20 T.P.I.  
 Moulded depth 37'333 Deduction for Fresh Water  $\frac{\Delta}{40T} = 7.00$  inches  
 Stringer Plate .063 Round of Beam Correction  
 Sheathing on exposed deck T  $(\frac{L-S}{L})$  - Ships Round of Beam 14.00 inches  
 Rise of floor (in sailers) - Standard Round of Beam  $\frac{B \times 12}{50} = 13.65$   
 Depth for Freeboard (D) 37.396 Difference .35  
 Table Depth  $\frac{4}{5}$  27.823 Restricted to  
 Depth Correction  $3 \times 9.563$  Correction  $\frac{\text{Difference}}{4} \times (1 - \frac{E}{L}) = .0875 \times 1 = .09 \text{ off.}$   
 If restricted by superstructures 28.689 on

	Enclosed Length	Length of Overhang	Height	Mean Covered Length (S)	Height Correction	Effective Length (E)
Poop						
Raised Quarter Deck						
Bridge		F				
		A				
Forecastle						
Trunk Aft						
" Forward						
Tonnage Opening Aft						
" " Forward						
Totals						

Station	Actual Sheer	Standard Sheer	Effective Sheer	S.M.	Product
A.P.	54.5	51.75	54.50	1	54.50
$\frac{1}{2}$ L from A.P.	23.5	23.03	23.50	4	94.00
$\frac{1}{2}$ L from A.P.	5.75	5.69	5.75	2	11.50
Amidships	0.	-	-	4	-
$\frac{1}{2}$ L from F.P.	11.5	11.38	11.50	2	23.00
$\frac{1}{2}$ L " "	47.	46.06	47.00	4	188.00
F.P.	105.5	103.50	105.50	1	105.50
				18	476.50
Effective Mean Sheer					26.472
Standard " " .05L+5					25.875
Difference					.597

TABULAR FREEBOARD corrected for flush deck if required =  $47+6.26=53.26$ Correction for co-efficient =  $\frac{1.4524}{1.36} = 88.91$ . DRAUGHTS AND SEASONAL CORRECTIONS

	Seiler, Tanker, Steamer	Timber
Depth correction	28.69	-
Deduction for superstructures	-	-
Sheer correction	-	.45
Round of Beam correction	-	.09
Correction for thickness of deck amidships	-	-
Other corrections, scantlings, etc.	9.44	37.59
	38.13	54.
Summer Freeboard in inches	10'-6 $\frac{1}{2}"$	126.50
Additional allowance for superstructures on Timber carrying ships	=	=
Summer Timber Freeboard in inches	=	=

Depth to Freeboard Deck in feet 37.396  
 Summer Freeboard in feet 10.542  
 Moulded Draught (d)  $26'-10\frac{1}{4}"$  26.854.  
 Addition for Keel  $3\frac{1}{4}$  and  $5/8$  1.15  
 Extreme draught 26.969  
 Deduction for Tropical and addition for Winter freeboard  $d/4 = 6.71$  ins.  
 Addition for Winter North Atlantic (if required) = ins.  
 Deduction for Tropical Timber Freeboard  $\frac{d}{4}$  = ins.  
 Addition for Winter " "  $\frac{d}{3}$  = ins.  
 " " N.A. Timber Freeboard (if required) = ins.

Form LL. 4.D.

## THE BRITISH CORPORATION REGISTER OF SHIPPING AND AIRCRAFT

SURVEY FOR FREEBOARD

"MONT SANDRA" CONDITIONS OF ASSIGNMENT

SHIPS NAME EX. ALEXANDRA PARK

OFFICIAL NUMBER 175619

Nationality and Port of Registry BRITISHMONTREAL

## PARTICULARS OF SUPERSTRUCTURES, TRUNKS, CASINGS, DECKHOUSES

	Coaming	Plating	Stiffeners	Spacing	End Attachments	No. and size of Openings	Height of Sills	Height of Casings
Poop Bulkhead								
R.Q.D. "								
Bridge Aft Bulkhead								
" Forward "								
Forecastle Bulkhead								
Trunk, Aft								
" Forward								
Exposed Machinery Casings on Freeboard or R.Q. Decks	11/32	5/16	3x3x5/16	30	b/t.s.	5x2	24.	10'-6"
Exposed Machinery Casings on superstructure decks								
Machinery Casings within Superstructures not fitted with Cl. 1 closing appliances			53x3x5/16	36				
Deckhouses on flush deck ships	5/16	5/16	F5x3x5/16	33	b/t.s.		18-24	7'-6"

## PARTICULARS OF CLOSING APPLIANCES (state if capable of being manipulated from both sides)

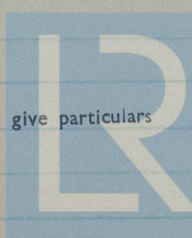
Poop Bulkhead	
R.Q.D. "	
Bridge Aft Bulkhead	
" Forward "	
Forecastle Bulkhead	
Exposed Machinery Casings on Freeboard or R.Q. decks	
Exposed Machinery Casings on superstructure decks	
Machinery Casings within superstructures not fitted with Cl. 1 Closing Appliances	
Deck houses on Flush Deck ships	

Hinged steel doors - operated both sides.

Hinged wood doors (2" thick) operated both sides.

## PARTICULARS OF FREEING ARRANGEMENTS

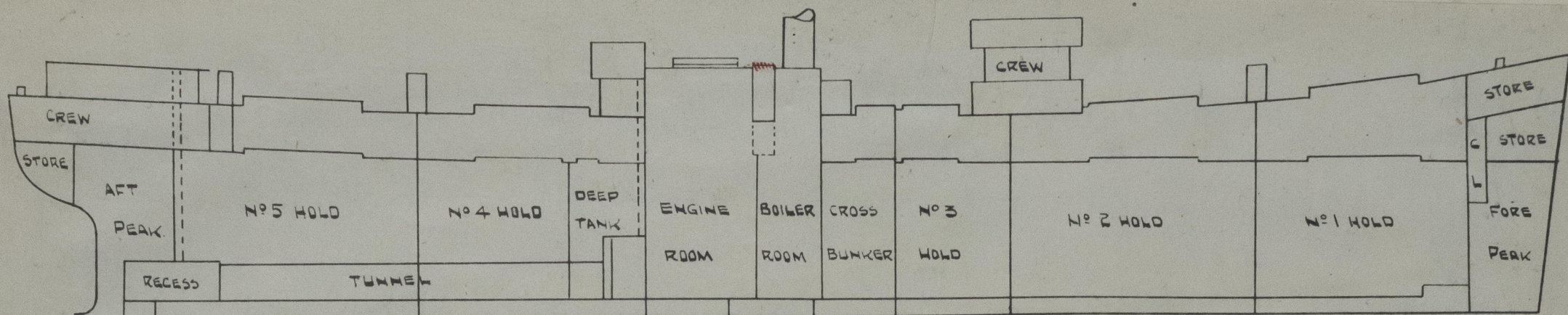
	Length of Bulwark	Height of Bulwark	No. and size of Freeing Ports each side	Area each side	Rule Area
After Well	127.5'	3'-6"	4 @ 3'-0" x 9"	9	
Forward Well					
State fore and aft position and height above deck to bottom of port, for each port					



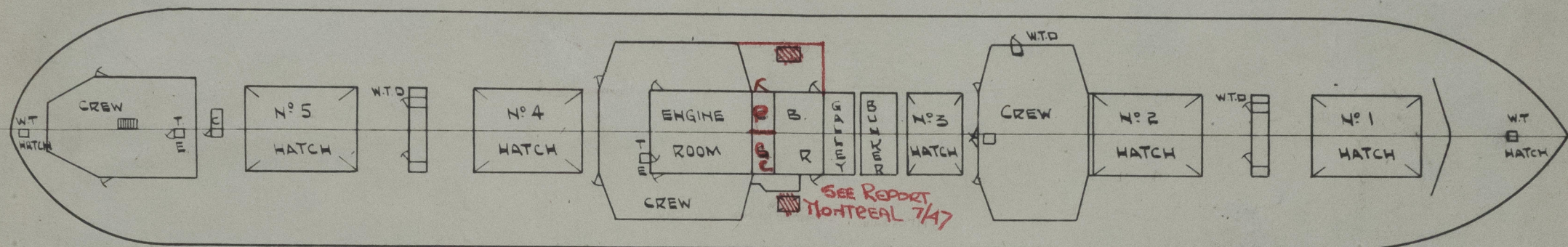
© 2021

Lloyd's Register Foundation

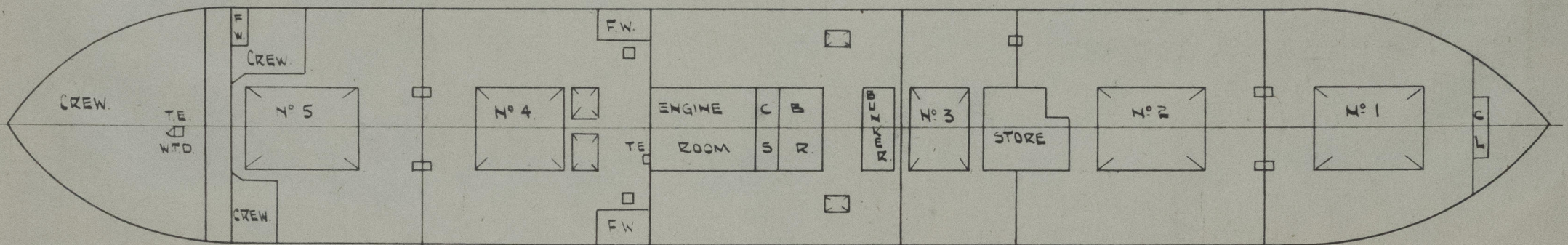
0130 2/8



PROFILE.



FREEBOARD DK.



SECOND DK.

TRIMMING HATCHES FITTED IN 2ND DK TO HOLDS - STEEL HINGED COVERS

PARTICULARS OF ALL HATCHWAYS ON FREEBOARD AND SUPERSTRUCTURE DECKS

Number and description of Hatchway from forward	1	2	3	BUNKER.	4	5	COAL HATCH P+S.	STORE HATCH. FORD	STORE HATCH. AFT.
Dimensions of Hatchway	33'-9" x 20'-0"	35'-0" x 20'-0"	15'-0" x 20'-0"	7'-6" x 20'-0"	35'-0" x 20'-0"	35'-0" x 16'-0"	7'-3" x 4'-0"	3'-3" x 2'-6"	1'-9" x 2'-0"
Height } steel above } deck	3'-0" - 3'-2"						2'-6"	2'-6"	2'-6"
Thicknes } sides } ends	7/16"	1"	1"		1"	1"	7/16"		
Stiffeners	7" x 3 1/2" x 8 BA	9 BA.	7 BA.	1"	9" BA.	7" BA.			
Brackets or Stays	STAYS FITTED.								
Number	5	5	2	1	5	5			
Spacing	5'-7 1/2"	5'-10"	4'-7" & 5'-10"	4'-0"	5'-10"	5'-10"			
Scantling and Sketch	18 1/2" x 11/32"	Do	Do	18 1/2" x 5/16"	A.C.I.	Do.			
Bearing Surface and thickness of carriers or sockets	5" x 3" x 3/8"			5 x 3 x 3/8"					
Number									
Spacing									
Unsupported lengths									
Scantling and Sketch									
Bearing Surface and thickness of carriers or sockets	3 1/2"								
Material	SPRUCE.	Ditto	Ditto	Ditto	Ditto	Ditto.	SPRUCE		
Thickness	3"						3"		
How Fitted	F.A.A.						ATH.		
Bearing Surface	3"						2 1/4"		
Spacing of Cleats	24"						2		
Number of Tarpaulins	2.								

Are tarpaulins in good condition and in accordance with rule requirements?

Are lashings provided in accordance with rule requirements?

Are wood fore and afters steel shod at all bearing surfaces?

Are battens and wedges efficient and in good condition?

FITTED WITH HINGED STEEL COVER. Lloyd's Register Foundation

Give full particulars of the following:—

Fiddle, Funnel and Vent Coamings, Engine Room skylight and other openings in Machinery Casing tops and their means of closing (state height of coamings, type of fiddle covers, and if these are permanently attached in their proper positions)

Top of E.R. and B.R. casing 10'-6" above upper deck - fiddle gratings and E.R. skylight steel with hinged steel covers fitted to openings permanently secured. Funnel secured direct to casing top.

~~General Bunk House in lower part of~~

SADDLE BACK HATCH AT FIDDLEY TOP PLATED OVER (P). ~~FORMING IN WAY REMOVED~~  
AND STEEL SKYLIGHT FITTED INTO PANTY.

Flush Bunker Scuttles on freeboard and superstructure decks (state material, type of joints, etc., and if secured by hinge or permanent chain attachment)

Companionways on freeboard and superstructure decks (state material, height of doorway sills, type of doors, and if these can be closed and secured from both sides)

1 Steel companionway to crew's quarters aft - 24" coaming - 2" solid wood door operated both sides.

Entrances in deck-house aft 24" coamings - 2" solid wood doors - operated both sides.

Doors to pantry in fore-house - steel - weatherlight - operated both sides.

Reinforced with portable wood strong back.

Doors giving access to hold and Tween decks are steel, rubber jointed and with toggles - operated both sides.

Ventilators in exposed positions on freeboard, raised quarter and superstructure decks to spaces below freeboard decks and fully enclosed superstructures enclosed by Class 1 appliances (state height of steel coamings, pitch of rivets in deck connection, type of closing arrangements)

Upper deck coamings 36" minimum - welded above and below deck. Wood plugs and canvas covers supplied.

Airpipes in exposed positions on freeboard, raised quarter and superstructure decks (state height to opening and if satisfactory closing arrangements are provided)

Minimum heights of Air pipes on Upper deck 36" to bottom of bend.

Closing arrangements (a) wood plugs secured by chain to air pipes. Where W.B. or F.W. carried.

(b) special ball float valve and gauge fitted to D.B. O.F. Tanks. (c) Gauge fitted to deep tanks and settling tanks Port and Starboard.

Scuppers and Sanitary Discharge Pipes (state material, type and number of valves)

In Tween Deck: - 7 off Storm valves from deck houses on Upper Deck (Port)  
4 " " " " " " " " (Stbd)  
3 " Double " " Accom. in T.D. Aft Port.  
1 " Geared " " Refig. space in T.D. Stbd.  
Valve geared to Upper Deck.  
All valves of brass.

IN NO 3 HOLD

Side Scuttles to spaces below freeboard and superstructure decks (state type or pattern, and if permanent or portable deadlights are supplied)

10" Brass framed side scuttles having C.I. hinged dead-lights, fitted to crew accom. aft.

Vertical distance of sill of lowest side scuttle below top of freeboard deck at side amidships

Side scuttles aft are 36" below upper deck.

Guard Rails on freeboard and superstructure decks (state type and where fitted)

Bulwarks amidships and forward - Guard rails, three in No. elsewhere on Upper deck.

Gangways and Lifelines

Lifelines to crew accom. aft.

Gangway, Cargo and Coaling Ports in sides of ship

None. AIR SHOOT REMOVED AND SHELL DOUBLED IN WAY (S) SIDE-DECK OPENING PLATED OVER



© 2021

Lloyd's Register  
Foundation

SUPPLEMENTARY REQUIREMENTS FOR STEAMER CARRYING TIMBER DECK CARGOES

Do Superstructure and Machinery Casings comply with rules?

Is provision made for protection of steering gear?

Is emergency steering gear provided?

Are efficient sockets and eyes for lashings provided and properly spaced?

State particulars of longitudinal subdivision in double bottom

State particulars of Bulwarks and Rails

Particulars of any Special Features in the construction of the Ship

Endorsement at first survey and at surveys for Renewal of Certificate:—

The fittings and appliances are in accordance with the particulars shown in the form and are in good condition



© 2021

Lloyd's Register  
Foundation

0130 8/8