

# GENERAL NOTES

HISTORY		
1 JUL 21 '55	ORIGINALLY DRAWN	
2 SEP 21 '55	REVISED	
3 OCT 11 '55	SECONDLY REVISED	
4 OCT 27 '55	APPROVED BY OWNERS	
5 NOV 8 '55	APPROVED WITH SOME AMENDMENTS BY LRS	
6 DEC 7 '55	THIRDLY REVISED	
7 NOV 30 '57	REVISED FOR S818-23	
8 OCT 12 '58	FINALLY DRAWN	

## EQUIPMENT NUMBER BY LLOYD'S RULE

EQUIPMENT NUMBER FOR THE HULL		204(288+1078) x 85 x 204(14325-1078)	8690.2
EQ NO FOR SUPSTR	FCLE DK	.85 x 24.81 x (23 + 3.6) / 2	62.2
	POOP DK	.85 x 41.94 x (3.1 + 2.5) / 2	49.8
	ON UPPER DK	.75 x 13.50 x 2.40	24.3
	ON BRIDGE DK	.75 x 12.00 x 2.40	21.6
EQUIPMENT NUMBER FOR OTHER ERRECTN	ON POOP DK	.75 x 31.15 x 2.40	56.1
	ON BOAT DK	.75 x 18.685 x 3.00	42.0
EQUIPMENT NUMBER (IN METER <sup>2</sup> )			8996.2
EQUIPMENT NUMBER (IN FEET <sup>2</sup> )			96855

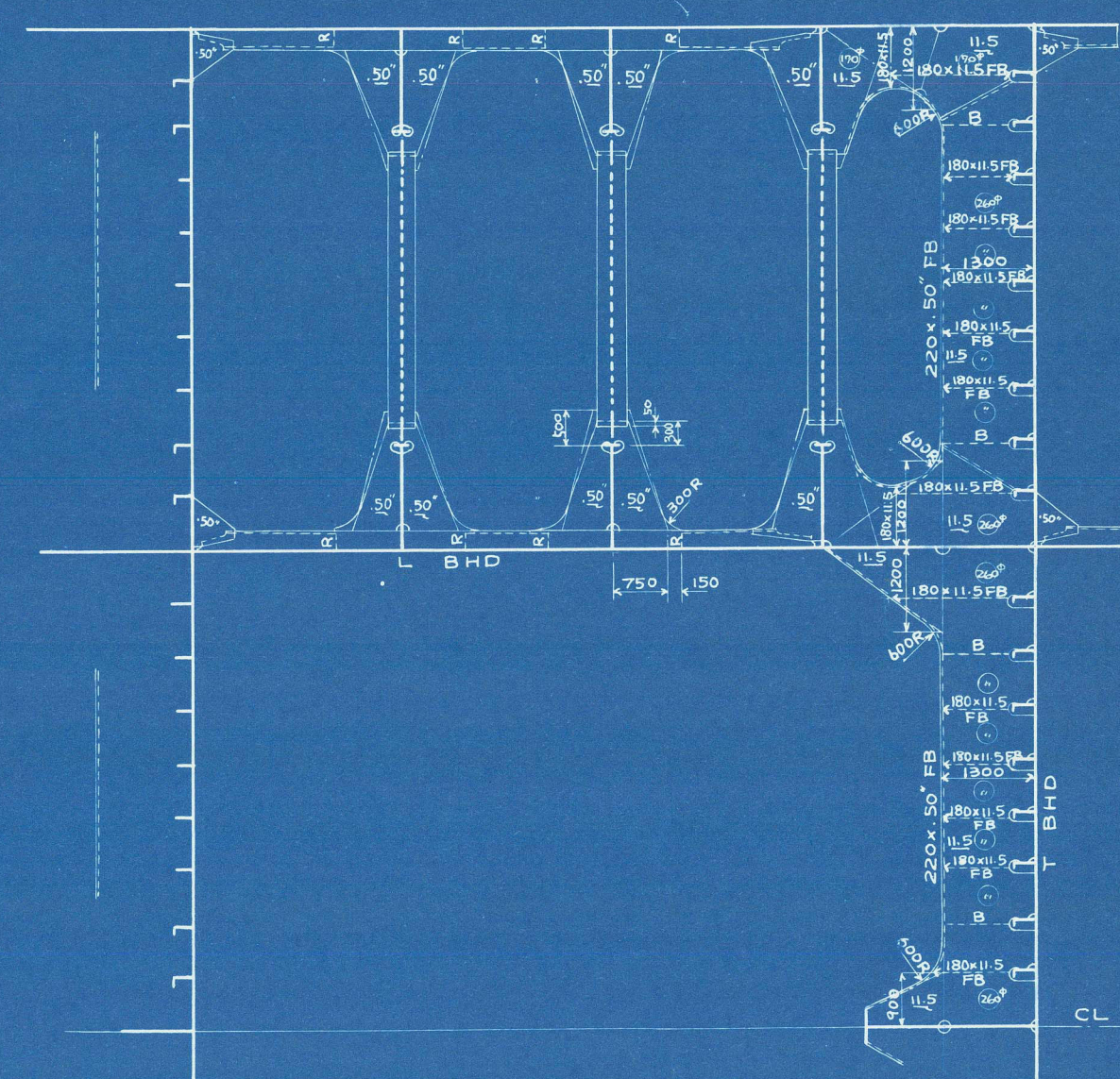
## EQUIPMENT

ITEM	NUMBER	WEIGHT OR SIZE	REMARKS
BOWER ANCHOR	3	EACH 145.5 CWT	STOCKLESS
CHAIN CABLE	21 LENGTH	EACH 3" x 15 FMS	STUD LINK SPECIAL STEEL
	2 LENGTH	EACH 3" x 7.5 FMS	STUD LINK SPECIAL STEEL
TOW LINE	1	75' CIRC (6 x 37) x 150 FMS	GAUV SPECIAL FLEX STEEL W ROPE
MOORING PIPE	6	EACH 4" CIRC x 120 FMS	4 STRAND MANILA ROPE

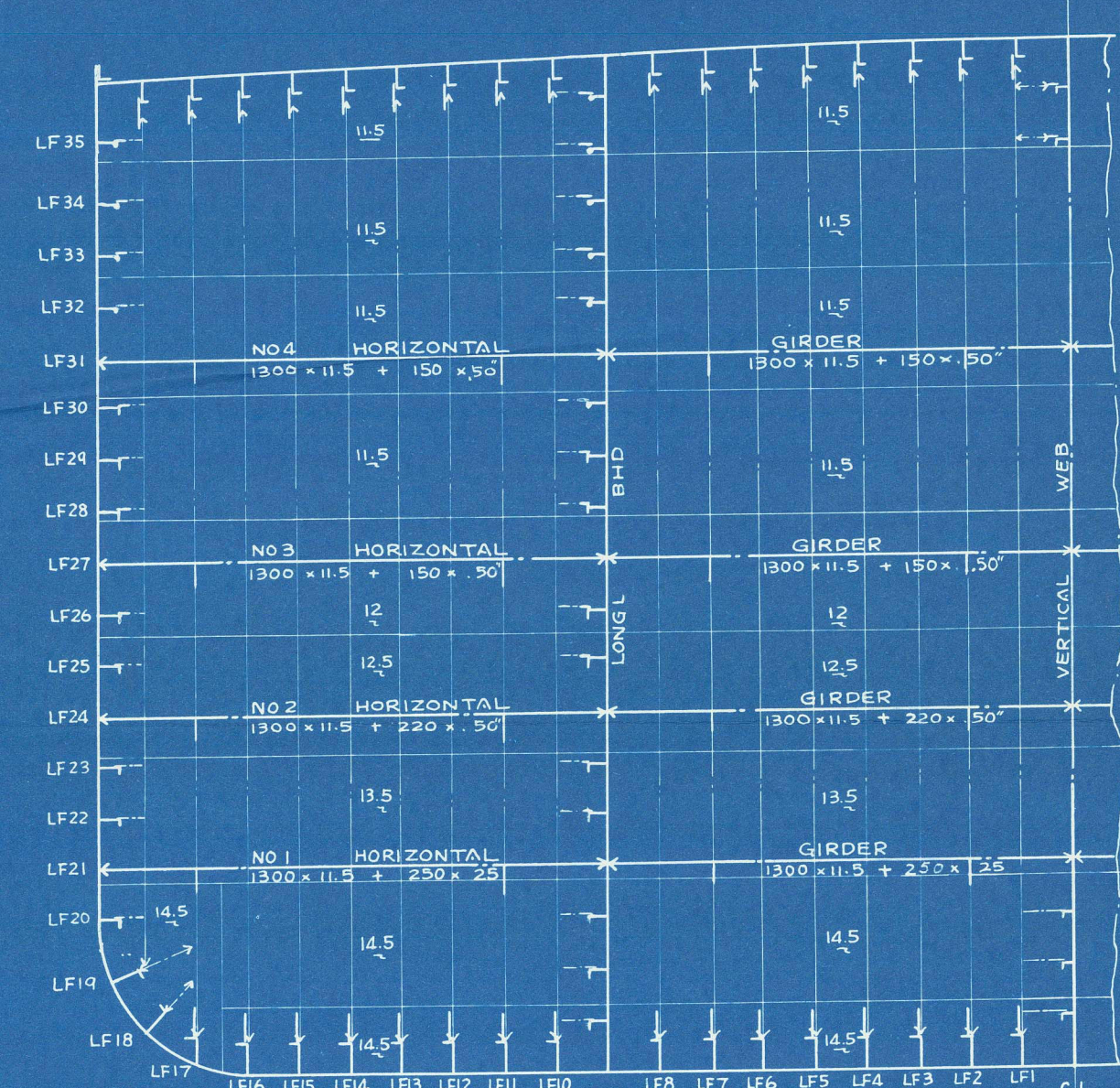
## QUALITY OF PLATE

MARK	QUALITY
* N	LR P403 NORMALIZED
* C	MIN CHARPYV NOTCH TEST AT 0°C 40FT-LBS MAX CRYSTALLINITY 60%
* C	LR P403 FULLY KILLED
*	LR P403

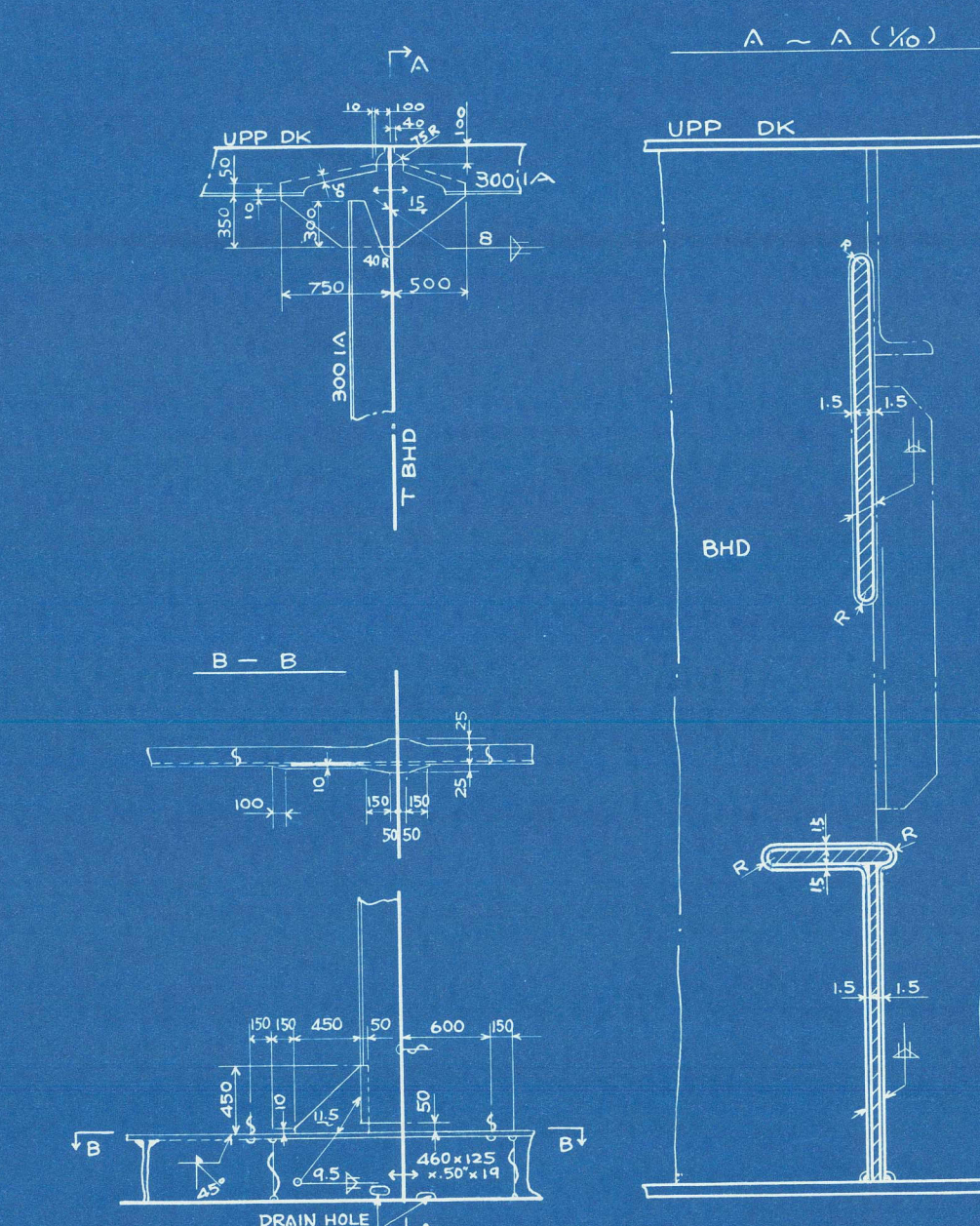
TYPICAL TANK PLAN  
SHOWING NO 2 HORIZONTAL



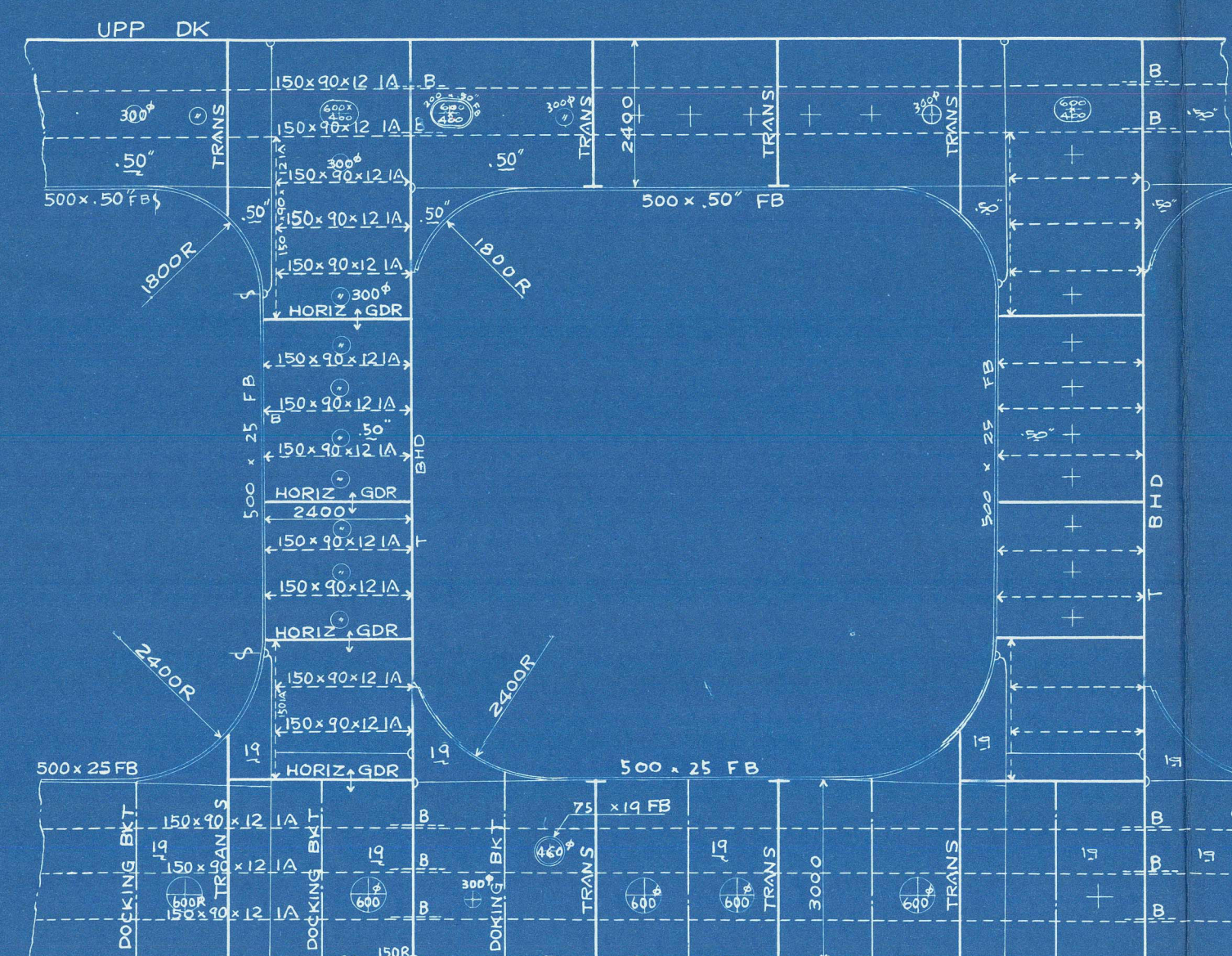
TRANSVERSE BULKHEAD  
STIFF 300 x 90 x 13 x 17 IA 760 SP



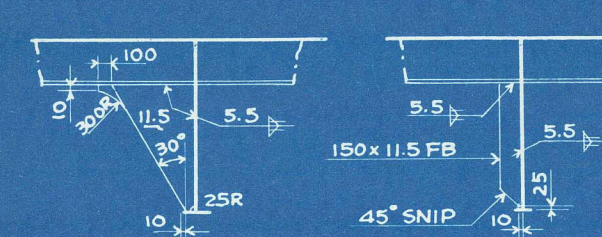
DETAIL OF DK & BOTT LONGL



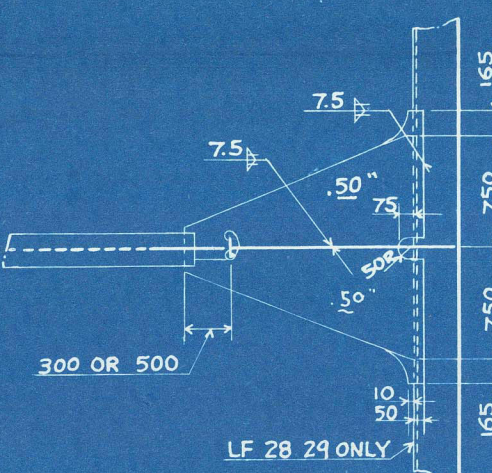
VERTICAL WEB AND GIRDER AT CENTER LINE



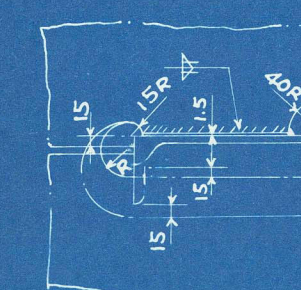
BKT ON DK TRANS STIFF ON DK TRANS



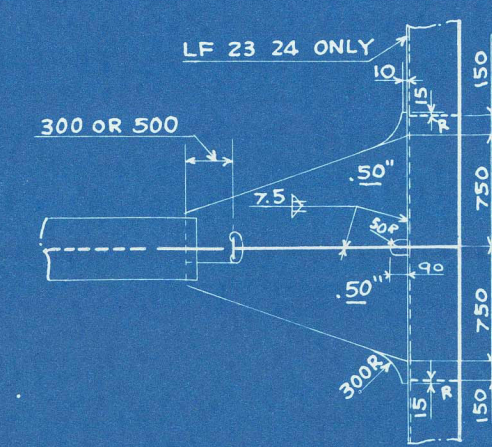
STRUT ORDINARY



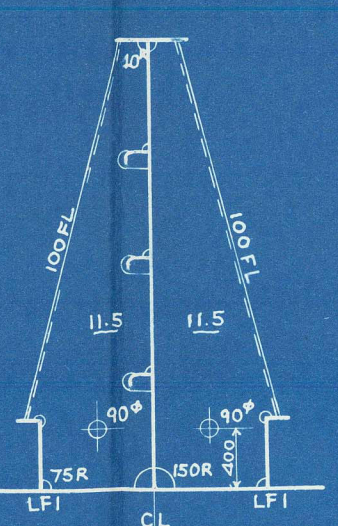
DETAIL OF SLOT FOR LONGITUDINAL (1/10)



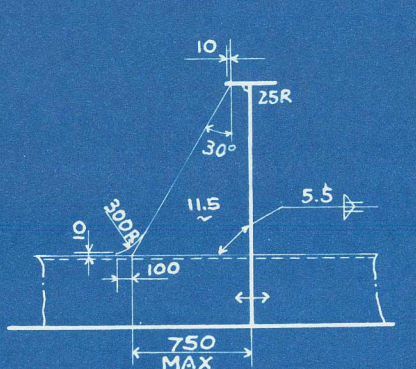
STRUT ORDINARY



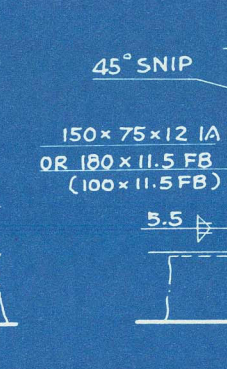
DOCKING BKT ON CENTRE GIRER



BKT BOTT OR SIDE TRANS



STIFF BOTT OR SIDE TRANS



CLASS  
LLOYD'S REGISTER OF SHIPPING - 100 A1 "CARRYING PETROLEUM IN BULK" - LMC

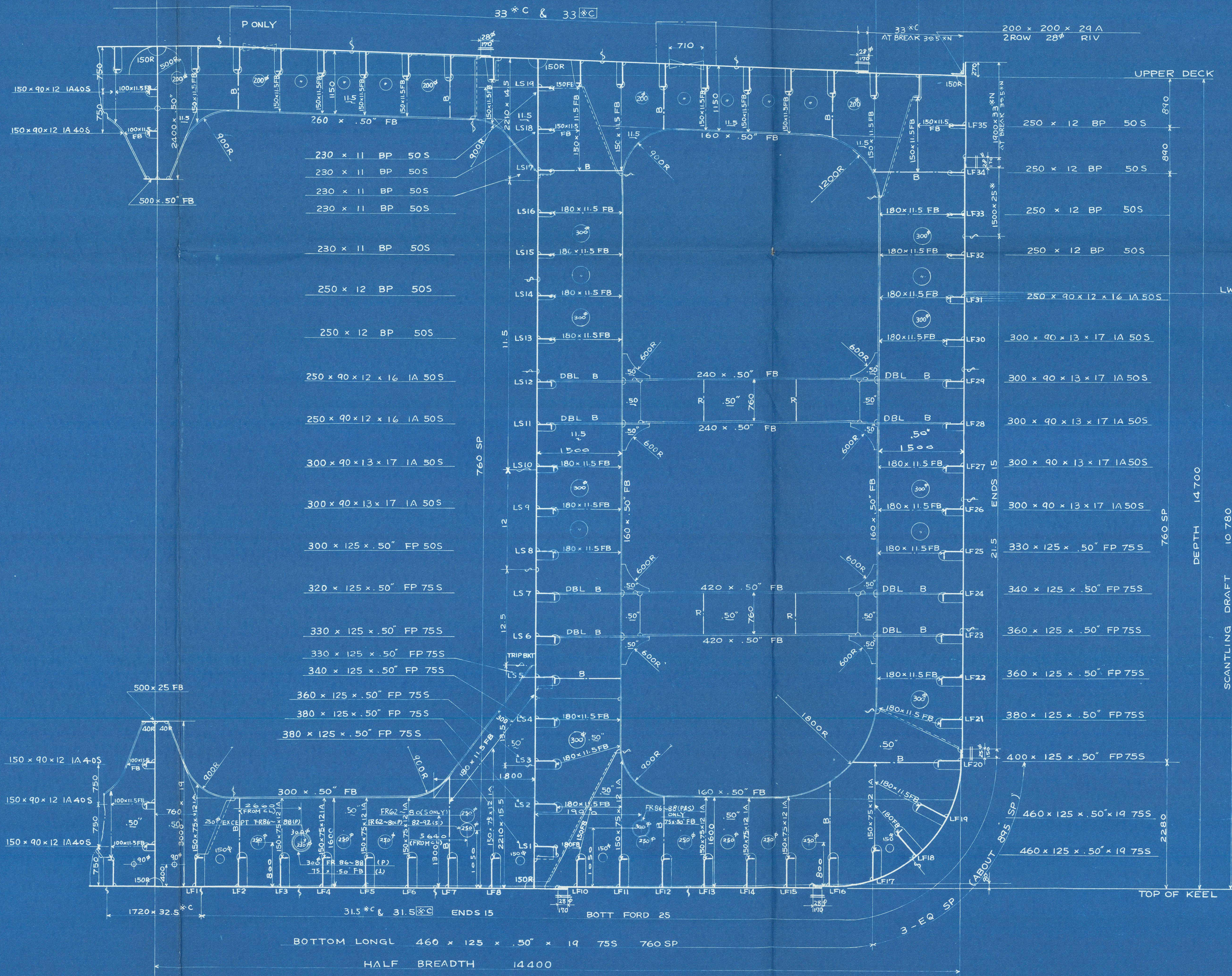
## PRINCIPAL DIMENSION & C

LENGTH OVERALL		211.700	694'-6 1/2"
" BETWEEN PP	L	204.000	669'-3 1/2"
BREADTH MLD	B	28.800	94'-5 1/2"
DEPTH	D	14.700	48'-2 3/4"
DESIGNED LOAD DRAFT (TOP OF KEEL)	d	10.780	35'-4 3/8"
SHEER AT AP		335	13 3/4"
" " FP		440	18 3/4"
CAMBER OF DECK FOR 28" 800 BEAM		500	19 1/8"
RISE OF FLOOR		80	3 3/8"
RADIUS OF BILGE TURN		2' 200	7'-2 1/2"

## SCANTLING NUMERALS

LENGTH BETWEEN PP	L	204.000	669'-3 1/2"
BREADTH	B	28.800	94'-5 1/2"
DEPTH	D	14.700	48'-2 3/4"
SCANTLING DRAFT	d	10.780	35'-4 3/8"
PROPORTION	10 ≤ b/D (13.878) ≤ 14		
	b/D = 1.459		
	d (10.780) ≥ 0.85 1/4 - 0.0082 (1/4) 10.65		

DECK LONGL 300 x 90 x 13 x 17 IA 50 S 760 SP



S 823

ALTHEA

MIDSHIP SECTION

FINISHED PLAN

SCALE 1:50	DATE DRAWN OCT 10 '58
YOKOHAMA SHIPYARD & ENGINE WORKS MITSUBISHI NORTH AMERICA LTD. HULL DESIGN DEPARTMENT	
APPROVED	<i>E. Yamada</i>
CHECKED	<i>K. Hara</i>
DRAWN	<i>S. Nagashima</i>
TRACED	
DATE 15/5/59	
DRAWING NO.	HO 2002 F

011544-011554-0213



midship Section

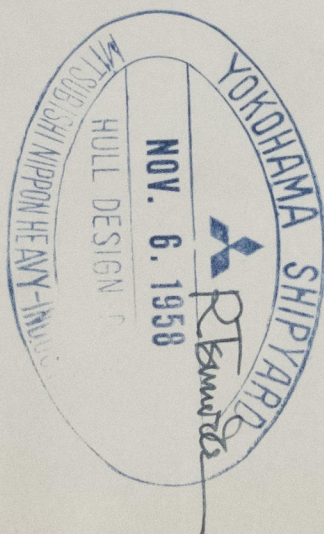
RECORDS DEPT  
LONDON

14

S.S. "ALTHEA"

YKA. F.E. Rpt. No. 2786

CERTIFIED COPY OF APPROVED PLAN		
PLACE OF APPROVAL	Kobe	DATE 8. 11. 55.
CERTIFIED BY	J. Macdonald DATE 9. 2. 59.	



20466

011544-011554-0213

LLOYD'S REGISTER  
OF SHIPPING



Lloyd's Register  
Foundation