

CARDIFF

Rpt. C. 11 (Contd.)

Index No.

Lloyd's Register of Shipping.

Ship's Name

"SAND RUNNER"

Official No. 169093

Memorandum of alterations reported since ship was surveyed for assignment of Load Lines in Goole, 1943.

Cardiff, 11.50.

This vessel has now been fitted for pumping and carrying sand in bulk. The main hatch has been divided into three compartments by fitting bulkheads on frames 32 and 58 and longitudinal bulkheads between these frames port and starboard 8'0" from centre line to form a sand tank, in accordance with plan approved on 15th. August 1950.

The three hatchway openings as now fitted are 10'11" x 14'0"; 45'6" x 14'0" and 4'9" x 14'0".

The original hatch coamings have not been cut.

Four additional air pipes (2 p.s. and 2 s.s.) 3" diameter 36" high have been fitted in way of spaces abreast sand tank.

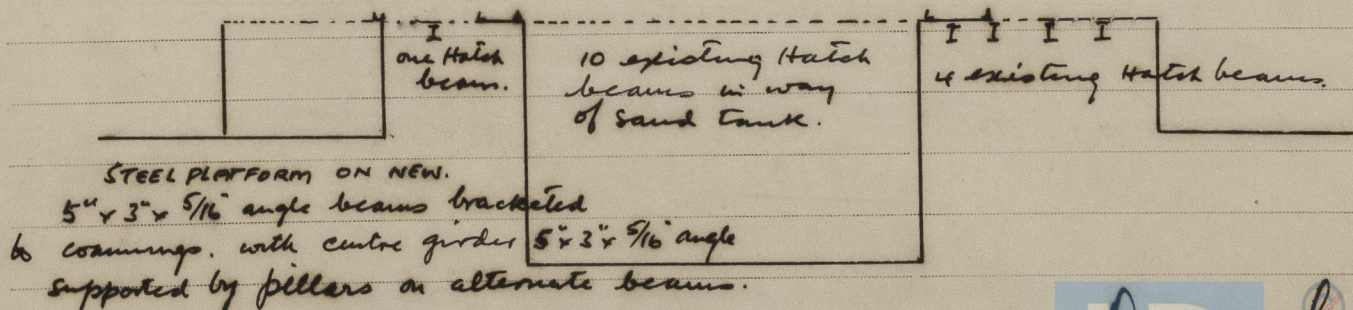
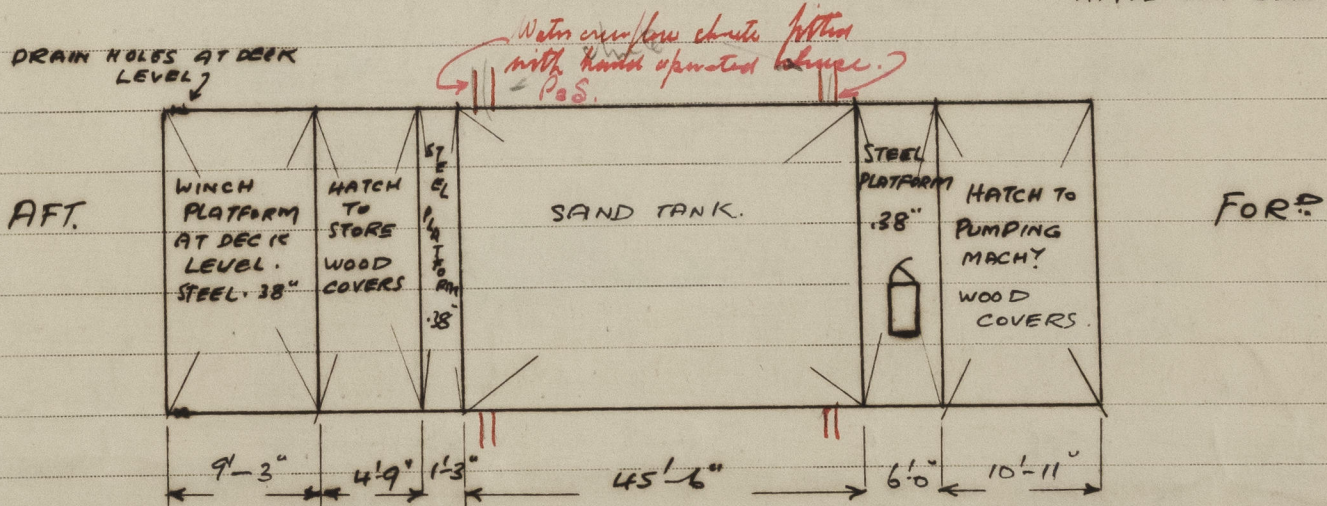
A companionway of steel construction in accordance with Rule requirements has now been fitted on forward steel platform for access to pumping machinery space.

The winch steel platform now fitted at after end of original hatchway is plated over new beams at deck level and drain holes cut in hatch side coamings.

The hatch wood covers and closing appliances for openings have been fitted in accordance with Rule requirements.

2 Additional bilge suctions have now been fitted, one at after end in way of sand tank and one in way of forward pumproom.

THE EXISTING HATCH SIDE AND END COAMINGS HAVE NOT BEEN CUT.



© 2021
 Denis Sullivan
 Cardiff 11.50.
 Register
 Foundation

011524 - 011535 - 0360